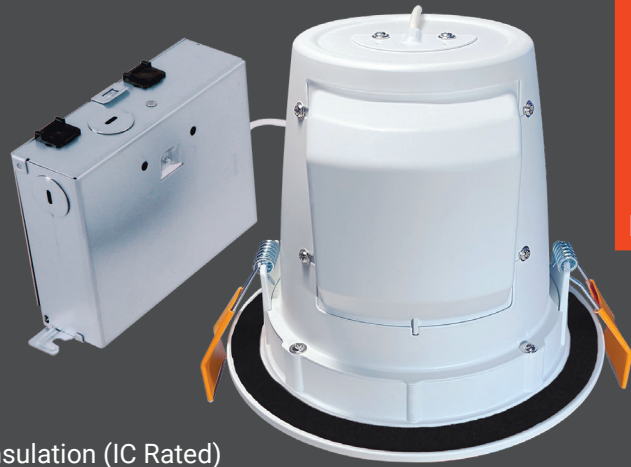




The HALO® RL Slope Ceiling Direct Mount is the perfect solution for slope ceiling applications! This canless fixture installs without the use of a recessed housing and directs light downward, regardless of ceiling pitch angle.

Product Features

- Canless 4" & 6" slope ceiling downlight
- Field Selectable Color Temperature: 2700K / 3000K / 3500K / 4000K / 5000K; 90+ CRI
- Adjusts from 9° to 45° to match 2/12 to 12/12 ceiling pitches
- Remote driver / junction box, 120V input, phase cut dimming to 5%
- Held securely in 1/2" to 1 1/4" thick ceilings with retention springs
- Air-tite and suitable for direct contact with air permeable insulation (IC Rated)



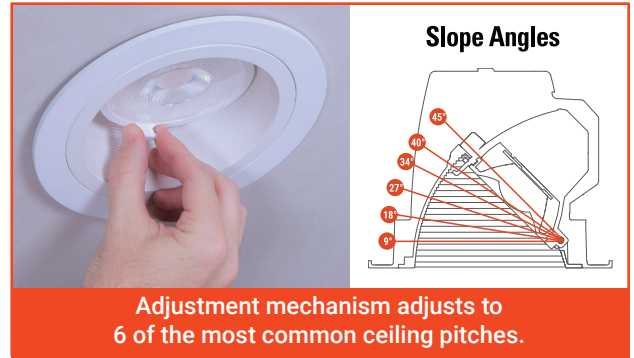
LEARN MORE



RLS4099FS1EWHDMR
4-inch
Slope Ceiling Downlight



RLS6159FS1EWHDMR
6-inch
Slope Ceiling Downlight



Catalog Number	Material Number	Description	UPC	Accessories	
				Extension Cable	Mounting Frame
RLS4099FS1EWHDMR	13535441	4" Slope Ceiling LED module, 900 lumens, 90 CRI, 120V, Selectable CCT 2700K-5000K	080083190300	HLB06FSEC – 6 ft. extension cable HLB12FSEC – 12 ft. extension cable	HL4RSMF 4" round and square mounting frame
RLS6159FS1EWHDMR	13535442	6" Slope Ceiling LED module, 1500 lumens, 90 CRI, 120V, Selectable CCT 2700K-5000K	080083190324	HLB20FSEC – 20 ft. extension cable	HL6RSMF 6" round and square mounting frame



Refer to ENERGY STAR® Certified Products List.
Can be used to comply with California Title 24 High Efficacy requirements.
Certified to California Appliance Efficiency Database under JAB.



Cooper Lighting Solutions
1121 Highway 74 South
Peachtree City, GA 30269
P: 770-486-4800
cooperlighting.com

Canada Sales
5925 McLaughlin Road
Mississauga, Ontario L5R 1B8
P: 905-501-3000
F: 905-501-3172

© 2021 Cooper Lighting Solutions
All Rights Reserved
Publication No. BR51816921
October 2021

Product availability, specifications, and compliances are subject to change without notice.