



SERVICE PARTS LIST

BULLETIN NO.
54-43-2460

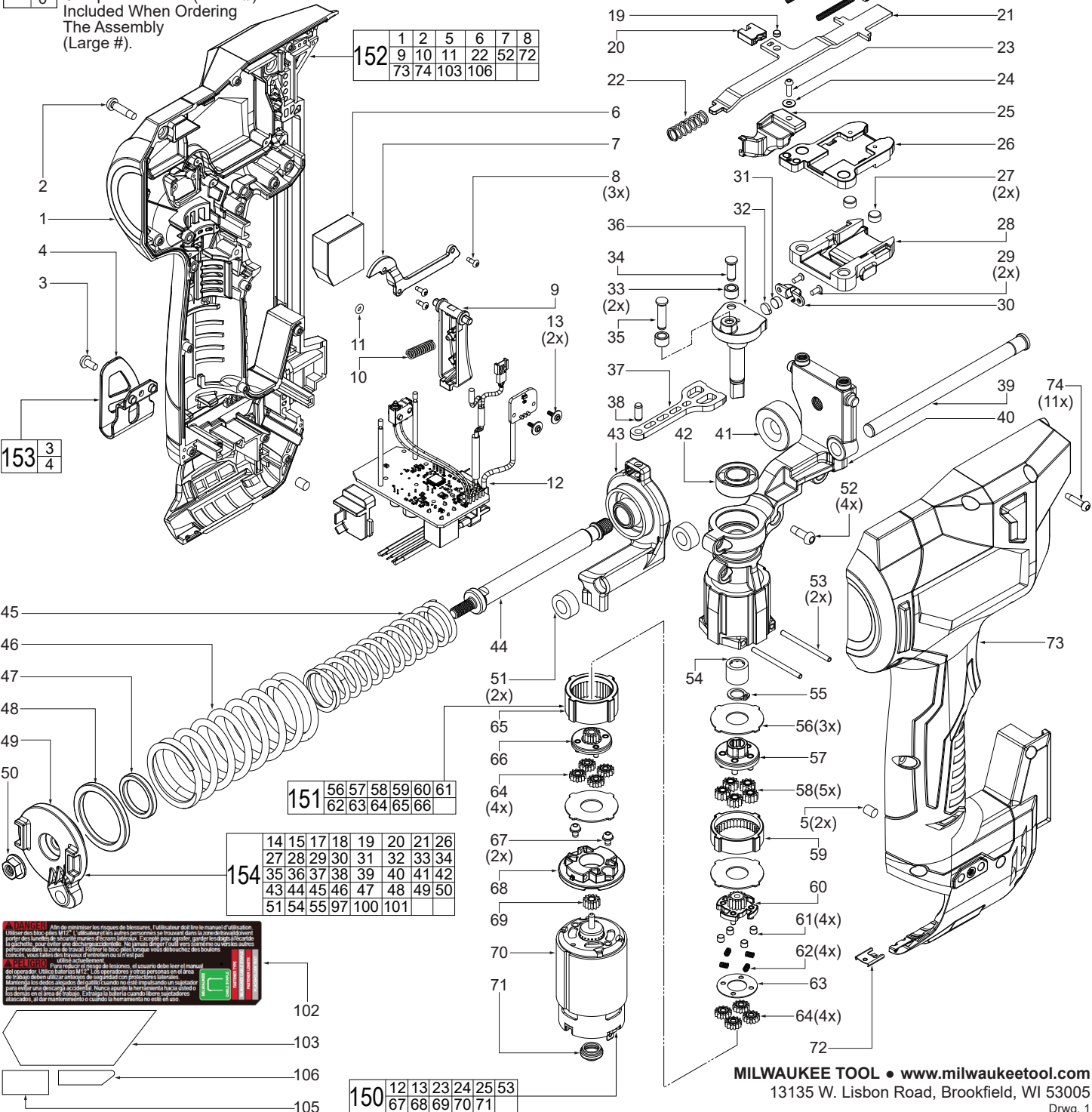
SPECIFY CATALOG NO. AND SERIAL NO. WHEN ORDERING PARTS		REVISED BULLETIN	DATE
M12™ CABLE STAPLER			Jan. 2022
CATALOG NO. 2448-20	STARTING SERIAL NUMBER M72A	WIRING INSTRUCTION See Page 4	

FIG. SERVICE NOTES

- 19,25 Ensure #19 magnet north pole (marked with red line) is facing toward #25 WCB hall sensor potting board when assembling into the WCB hole.
- 30,31 Ensure #31 magnet north pole (marked with red line) is facing toward #30 magnet holder hole when assembling.
- 102 A clean, dry surface is essential for proper performance for any adhesive system. The area intended for application of any adhesive label or nameplate must be prepared by cleaning with isopropyl alcohol. The solvent is to be applied with a clean, lint free applicator and the surface allowed to dry before applying the label or nameplate.

SEE PAGE 2 FOR LISTING OF PART NUMBERS AND DESCRIPTIONS

EXAMPLE:
Component Parts (Small #) Are Included When Ordering The Assembly (Large #).



⚠ DANGER Afin de minimiser les risques de blessures, l'utilisateur doit lire le manuel d'utilisation. Utiliser des blocs piles M12™ uniquement et les autres personnes ne trouvant dans la zone de travail doivent porter des lunettes de protection. Ne jamais diriger l'outil vers d'autres personnes ou vers les autres objets, y compris la zone de travail. Avant de faire fonctionner le bloc pile, vérifiez que le bloc pile est correctement inséré et verrouillé.

⚠ DANGER Para reducir el riesgo de lesiones, el usuario debe leer el manual del operador. Utilice baterías M12™. Las operadoras y otras personas en el área de trabajo deben utilizar dispositivos de protección personal. Mantenga los dedos alejados del punto de contacto no está impulsando un sujetador para evitar una posible accidentalidad. Nunca apunte la herramienta hacia usted o los demás en el área de trabajo. Extraiga la batería cuando libere sujetadores asociados, y asegurela correctamente o cubra la herramienta no está en uso.

FIG.	PART NO.	DESCRIPTION OF PART	NO. REQ.
1	-----	Left Handle Halve - Support	(1)
2	06-82-0211	M4 x 16mm Pan Hd. ST T-20 TP Screw	(2)
3	06-82-2500	6-32 x 7mm Pan Hd. T-15 Machine Screw	(1)
4	-----	Belt Hook	(1)
5	45-30-1000	Rubber Slug	(2)
6	-----	Core Mech Dampening Insert	(1)
7	-----	Wire Cover	(1)
8	06-82-7472	M2 x 0.635 x 6mm Pan Hd. ST Phillips Scr.	(3)
9	-----	Trigger	(1)
10	40-50-0128	Trigger Spring	(1)
11	34-40-0089	O-Ring for Trigger	(1)
12	-----	PCBA	(1)
13	-----	M2 x 40 PWH ST Phillips Screw	(2)
14	05-78-0019	M5 x 26mm Pan Hd. T-25 Machine Screw	(2)
15	-----	Receiver Cover	(1)
16	-----	Cable Guide - Left	(1)
17	-----	Cable Guide - Right	(1)
18	-----	Cable Guide Spring	(2)
19	44-26-0016	Magnet for Actuator Link	(1)
20	42-52-0041	WCB Magnet Holder	(1)
21	-----	WCB	(1)
22	-----	WCB Spring	(1)
23	-----	M2.5 x 8mm Pan Hd. T-8 Machine Screw	(1)
24	-----	Flat Washer	(1)
25	-----	WBC Hall Sensor	(1)
26	-----	Upper Receiver	(1)
27	-----	Magnet with Sleeve Assembly	(1)
28	-----	Lower Receiver	(1)
29	-----	M2.5 x 6mm Flat Head T-6 Machine Screw	(2)
30	-----	Magnet Holder	(1)
31	44-26-2872	N48 Magnet	(1)
32	-----	Rubber Plug	(1)
33	-----	Lifter Roller	(2)
34	-----	Lifter Pin - Short	(1)
35	-----	Lifter Pin - Long	(1)
36	-----	Unitary Design Lifter	(1)
37	-----	Striker	(1)
38	-----	Striker Pin	(1)
39	-----	Secondary Guide Post	(1)
40	-----	Frame	(1)
41	-----	Bumper	(1)
42	-----	Ball Bearing	(1)
43	-----	Hammer	(1)
44	-----	Guide Post	(1)
45	-----	Inner Spring	(1)
46	-----	Outer Spring	(1)
47	-----	Inner Washer	(1)
48	-----	Outer Washer	(1)
49	-----	Spring Sleeve	(1)
50	-----	M6 Serrated Flange Nut	(1)
51	-----	Felt Washer	(2)
52	06-82-0032	M4 x 12mm Pan Hd. ST T-20 Screw	(4)
53	06-65-0502	Steel Pin	(2)
54	02-50-5381	Needle Bearing	(1)
55	34-80-0020	Retaining Ring	(1)
56	-----	3rd Stage Washer	(3)
57	-----	3rd Stage Carrier	(1)
58	-----	3rd Stage Planet Gear	(5)
59	-----	3rd Stage Ring Gear	(1)
60	-----	One-Way Clutch Carrier	(1)
61	-----	One-Way Clutch Pin	(4)
62	-----	One-Way Clutch Pin	(4)
63	-----	One-Way Clutch Washer	(1)
64	-----	1st/2nd Stage Planet Gear	(8)
65	-----	1st/2nd Stage Ring Gear	(1)
66	-----	2nd Sun Gear	(1)
67	05-88-0920	M3 x 5mm Pan Hd. Lockwasher Mach. Scr.	(2)
68	-----	Motor End Cap	(1)
69	-----	1st Pinion	(1)
70	-----	Motor	(1)
71	43-44-7062	Motor Bush Seal Cap	(1)
72	42-70-0058	Housing Connection Clip	(1)
73	-----	Right Handle Halve - Cover	(1)
74	06-82-1080	M3 x 14mm Pan Hd. ST T-10 Screw	(11)
75	-----	M4 x 8mm Flat Hd. T-20 Screw	(2)
76	-----	Magazine Body	(1)
77	-----	Magazine Cap	(1)
78	05-81-1275	M4 x 20mm Pan Hd. Taptite T-20 Screw	(2)
79	-----	Consistant Force Spring	(1)
80	-----	Spring Drum	(1)
81	-----	Spring Drum Pin	(1)
82	05-80-0025	M3 x 6mm Flat Head Phillips Screw	(1)
83	-----	Unitary Magazine Slide	(1)
84	-----	Magazine End Plate	(1)

155	75	76	77	78	79	80	81	82	83	84	85	86
	87	88	89	90	91	92	93	94	97	100	102	

SEE PAGE 1 FOR PART ILLUSTRATION BREAK-DOWN OF TOOL

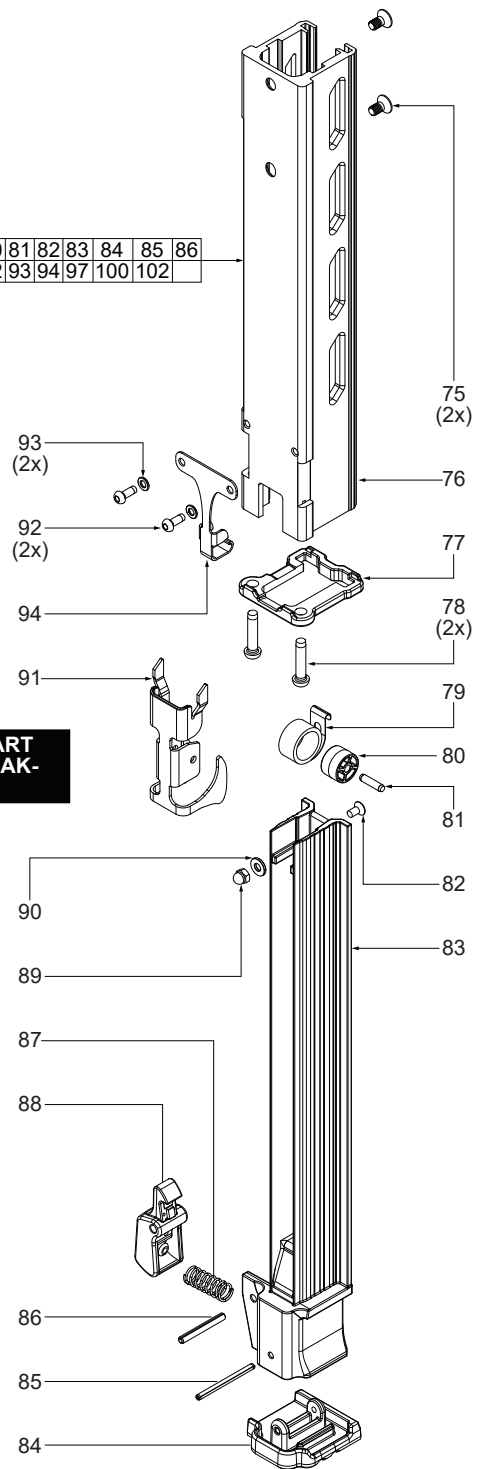


FIG.	PART NO.	DESCRIPTION OF PART	NO. REQ.
85	-----	Magazine End Plate Spring Pin	(1)
86	44-60-0171	Magazine Latch Spring Pin	(1)
87	-----	Magazine Latch Spring	(1)
88	-----	Magazine Latch with Metal Insert	(1)
89	-----	Magazine Spring Cap Nut	(1)
90	-----	Magazine Spring Washer	(1)
91	-----	Staple Pusher	(1)
92	06-82-2310	M3 x 8mm Pan Hd. Taptite T-10 Screw	(2)
93	-----	M3 Flat Washer	(2)
94	-----	Pusher Holder	(1)
102	10-20-5848	Warning Label	(1)
103	12-20-0648	Service Nameplate	(1)
105	-----	ID Label	(1)
106	-----	Gauge Label	(1)
150	14-50-0039	Motor/Electronics Service Assembly	(1)
151	14-29-0122	Gearbox Service Assembly	(1)
152	14-34-0304	Handle Service Kit	(1)
153	42-70-0039	Belt Hook Service Kit	(1)
154	14-46-0501	Core Mechanism Service Assembly	(1)
155	43-40-0070	Magazine Service Assembly	(1)

LUBRICATION NOTES:

Type 'T' Grease

No. 49-08-4260, 6.0 oz./170g tube

No. 49-08-4290, 1 lb. can

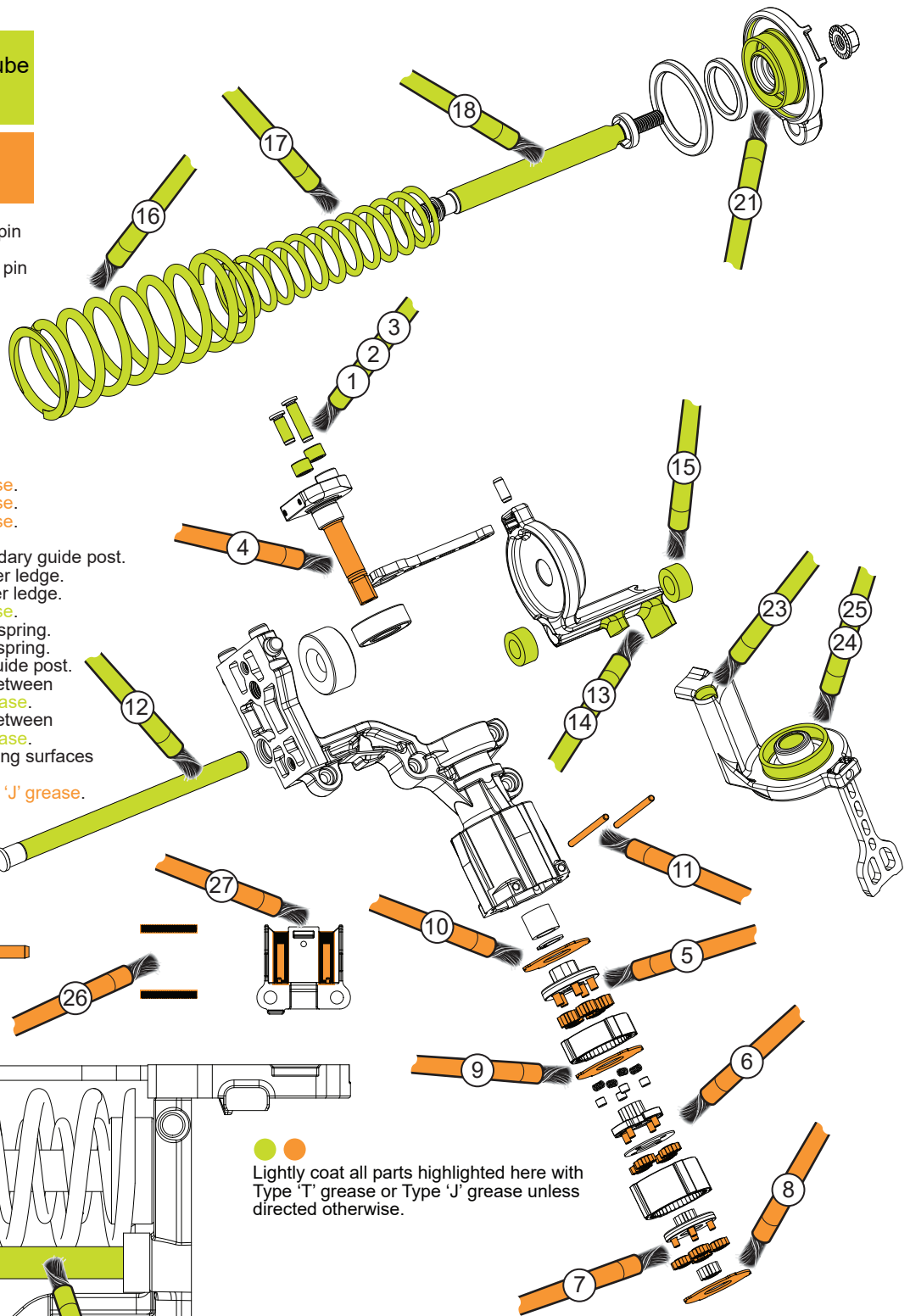
No. 49-08-4285, 7.5 lb. tub

Type 'J' Grease

No. 49-08-4220, 1 lb. can

No. 49-08-2010, 7.5 lb. tub

1. Apply 'T' grease to OD of long lifter pin prior to pressing into lifter.
2. Apply 'T' grease to OD of short lifter pin prior to pressing into lifter.
3. Coat OD of both rollers with 'T' grease.
4. Coat OD of lifter shaft with 'J' grease.
5. Apply 'J' grease to gear teeth and OD of carrier pins.
6. Apply 'J' grease to gear teeth and OD of carrier pins.
7. Apply 'J' grease to gear teeth and OD of carrier pins.
8. Coat 3rd stage washer with 'J' grease.
9. Coat 3rd stage washer with 'J' grease.
10. Coat 3rd stage washer with 'J' grease.
11. Coat both pins with 'J' grease.
12. Apply 'T' grease to the OD of secondary guide post.
13. Apply 'T' grease to the small hammer ledge.
14. Apply 'T' grease to the large hammer ledge.
15. Coat both felt washers with 'T' grease.
16. Apply 'T' grease to all coils of outer spring.
17. Apply 'T' grease to all coils of inner spring.
18. Apply 'T' grease to OD of primary guide post.
19. Coat OD of secondary guide post between felt washer and hammer with 'T' grease.
20. Coat OD of secondary guide post between felt washer and hammer with 'T' grease.
21. Apply 'T' grease to the spring retaining surfaces of spring sleeve.
22. Coat OD of magazine drum pin with 'J' grease.
23. Apply 'T' grease to hammer ID for secondary guide post.
24. Apply 'T' grease to hammer ID for primary guide post.
25. Apply 'T' grease to spring retaining surfaces of hammer.
26. Coat cable guide springs with 'J' grease.
27. Place 'J' grease on the face of receiver cover.



Lightly coat all parts highlighted here with Type 'T' grease or Type 'J' grease unless directed otherwise.

SCREW TORQUE SPECIFICATIONS

FIG.	PART NO.	WHERE USED	SEAT TORQUE	
			(KG/CM)	(IN/LBS)
2	06-82-0211	Left Handle	11.5±0.5	9.9±0.5
3	06-82-2500	Belt Hook	13.5±1.5	11.7±1.3
8	06-82-7472	Wire Cover	1.5±0.5	1.3±0.5
13	-----	Lifter Sensor	1.5±0.5	1.3±0.5
14	05-78-0019	Receiver to Frame	68.5±2.5	59.4±2.1
23	-----	WBC Hall Sensor	6.0±1	5.2±1
29	-----	Magnet Holder	3.5±0.5	3.0±0.5
44	-----	Guide Post M8 Side to Frame	143±10	124±8.6
50	-----	Guide Post M6 Thread Side	123±10	106±8.6
52	06-82-0032	Frame to Left Handle	9.0±1	7.8±1
67	05-88-0920	Motor End Cap	10.5±0.5	9.1±0.5
74	06-82-1080	Right Handle to Left Handle	9.0±1	7.8±1
75	-----	Mag to Frame	25±2.5	21.6±2.1
78	05-81-1275	Mag Cap to Mag Body	24±2.5	20.8±2.1
82	05-80-0025	CFS Spring to Mag	8.5±1.5	7.3±1.3
92	06-82-2310	Pusher Holder	12±1	10.4±1

