

RadioRA 3 | Product Reference Guide

RadioRA 3 was developed to work in any residence, new or existing. Easily install keypads, sensors, light, fan, temperature, and appliance controls, as well as shades to create a system that will best suit your needs. And you don't have to worry about the type of lighting in the home, either. Whether you have LED, halogen, incandescent, electronic low-voltage, magnetic low-voltage, or fluorescent lights, RadioRA 3 will provide the control you need.

Behind the scenes



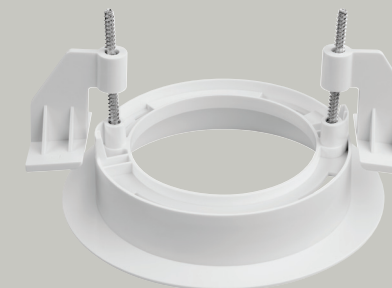
Processor

RR-PROC3-KIT
(includes PoE injector, shelf mount, and ethernet cables)
RR-PROC3-CW
(includes ceiling and wall mounts)



Shelf mount

L-SMNT-WH



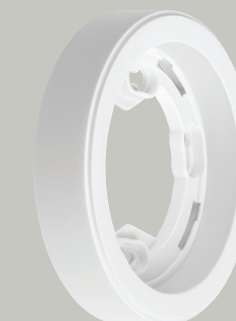
Ceiling mount

L-CMNT-WH



PoE injector

L-POEI-BL (120V)



J-box mount

L-JMNT-WH



Wireless repeater

L-REPPRO-BL



Auxiliary repeater

RR-AUX-REP-WH



Visor control receiver

RR-VCRX-WH

Lutron is a trademark of Lutron Electronics Co., Inc., registered in the U.S. and other countries. For a complete list of all Lutron trademarks, please visit lutron.com/trademarks.



Keypads



Sunnata RF keypads*†

- RRST-W4B-XX (4-button)
- RRST-W3RL-XX (3-button with raise/lower)
- RRST-W2B-XX (2-button)
- STBK-W (replacement button kit, orderable through myProjects)

* Includes one personalized button kit that is redeemed through the Lutron Designer software

† Wallplate sold separately
Note: XX denotes color suffix



seeTouch wall-mounted keypads*†

- RRD-W1RLD-XX (3-button, 2-button with raise/lower, dual group)
- RRD-W2RLD-XX (2-button with raise/lower, dual group)
- RRD-W3BD-XX (3-button, dual group)
- RRD-W3BRL-XX (3-button group with raise/lower)
- RRD-W3S-XX (3-button favorite scene with raise/lower)
- RRD-W3BSRL-XX (3-button spaced with raise/lower)
- RRD-W4S-XX (4-button favorite scene with raise/lower)
- RRD-W5BRL-XX (5-button with raise/lower)
- RRD-W5BRLIR-XX (5-button with raise/lower and IR)
- RRD-W6BRL-XX (6-button with raise/lower)
- RRD-W7B-XX (7-button)

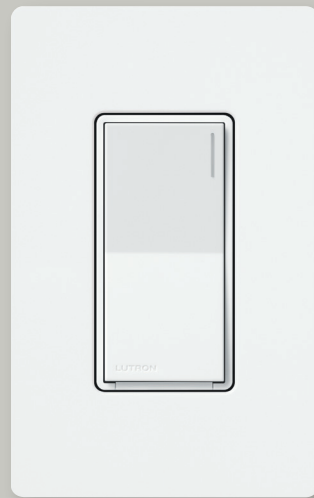
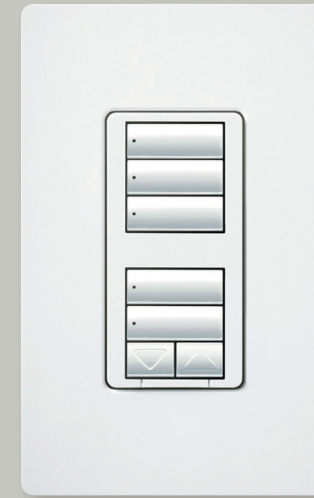
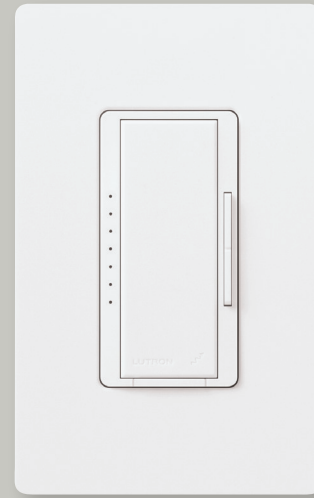
* Includes one personalized button kit that is redeemed through the Lutron Designer software

† Wallplate sold separately
Note: XX denotes color suffix

seeTouch tabletop keypads*

- RR-T5RL-XX (5-button)
- RR-T10RL-XX (10-button)
- RR-T15RL-XX (15-button)

Light and fan controls



Dimmers and switches

Sunnata[†]

- RRST-PRO-N-XX (RF Dimmer with PRO LED+)
- RRST-RD-XX (RF Companion Dimmer)
- RRST-8ANS-XX (RF Switch)
- RRST-RS-XX (RF Companion Switch)

Maestro[†]

- RRD-PRO-XX (250W LED, 500W INC/HAL/ELV, 400VA MLV phase selectable, neutral optional dimmer)
- RRD-6ND-XX (150W LED, 600W/VA INC/HAL/MLV neutral dimmer)
- RRD-10ND-XX (150W LED, 1000W/VA INC/HAL/MLV neutral dimmer)
- RRD-8ANS-XX (8A neutral switch)
- RRD-8S-DV-XX (dual-voltage 8A switch)
- RRD-F6AN-DV-XX (dual-voltage 3-wire control dimmer)
- RD-RD-XX (remote dimmer)
- RD-RS-XX (remote switch)
- RD-RD-277-XX (277V remote dimmer)
- RD-RS-277-XX (277V remote switch)
- RRD-3LD-XX (300W lamp dimmer)

Visit lutron.com for up-to-date gloss and satin finish color information

Hybrid keypads

seeTouch^{*†}

- RRD-H1RLD-XX (3-button, 2-button with raise/lower, dual group)
- RRD-H2RLD-XX (2-button with raise/lower, dual group)
- RRD-H3BSRL-XX (3-button spaced with raise/lower)
- RRD-H3S-XX (3-button favorite scene with raise/lower)
- RRD-H4S-XX (4-button favorite scene with raise/lower)
- RRD-H5BRL-XX (5-button with raise/lower)
- RRD-H6BRL-XX (6-button with raise/lower)

seeTouch C-L Neutral^{*†}

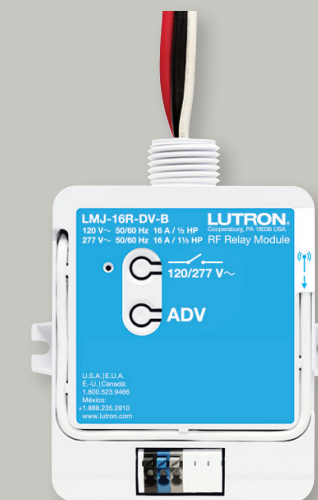
- RRD-HN1RLD-XX (3-button, 2-button with raise/lower, dual group)
- RRD-HN2RLD-XX (2-button with raise/lower, dual group)
- RRD-HN3BSRL-XX (3-button spaced with raise/lower)
- RRD-HN3S-XX (3-button favorite scene with raise/lower)
- RRD-HN4S-XX (4-button favorite scene with raise/lower)
- RRD-HN5BRL-XX (5-button with raise/lower)
- RRD-HN6BRL-XX (6-button with raise/lower)

* Includes one personalized button kit that is redeemed through the Lutron Designer software

[†] Wallplate sold separately
Note: XX denotes color suffix

Fan control[†]

- RRD-2ANF-XX (2A RF ceiling fan control, 4 speeds plus off, multi-location)



RF modules

- LMJ-16R-DV-B (Softswitch relay)
- LMJ-5T-DV-B (0-10V dimming)
- LMJ-CCO1-24-B (contact closure output)

Visit lutron.com for up-to-date gloss and satin finish color information

[†] Wallplate sold separately
Note: XX denotes color suffix

Wireless controls



Pico wireless controls

- PJ2-2B-YXX-L01 (light icons)
- PJ2-2B-YXX-S08 (screen text)
- PJ2-2B-YXX-L02 (power icons)
- PJ2-2BRL-YXX-L01 (light icons)
- PJ2-3B-YXX-L01 (light icons)
- PJ2-3BRL-YXX-L01 (light icons)
- PJ2-3BRL-YXX-S01 (shade icons)
- PJ2-3BRL-YXX-S02 (shade text)
- PJ2-3BRL-YXX-S03 (blackout text)
- PJ2-3BRL-YXX-S04 (sheer text)
- PJ2-3BRL-YXX-S05 (blind text)
- PJ2-3BRL-YXX-S06 (skylight text)
- PJ2-3BRL-YXX-S07 (drapery text)
- PJ2-3BRL-YXX-S09 (horizontal sheer blind text)
- PJ2-3BRL-YXX-S10 (tilt blind icons)



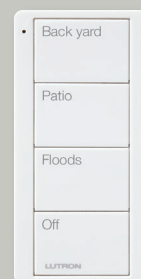
Pico 4-button wireless controls

- PJ2-4B-YXX-L01 (zone control, light icons)
- PJ2-4B-YXX-S01 (zone control, shade icons)
- PJ2-4B-YXX-L31 (scene keypad, light icons)
- PJ2-4B-YXX-S31 (scene keypad, shade icons)
- PJ2-4B-YXX-L21 (2-group control, light icons)
- PJ2-4B-YXX-S21 (2-group control, shade icons)
- PJ2-4B-YXX-LS21 (2-group control, shade/light icons)



Pico scene keypads

- PJ2-2B-YXX-P01 (2-button keypad with Home and Away scenes)
- PJ2-2B-YXX-P02 (2-button keypad with Alert and Goodnight scenes)
- PJ2-4B-YXX-P01 (4-button keypad with Bright, Entertain, Movie, and Off scenes)
- PJ2-4B-YXX-P02 (4-button keypad with Bright, Cooking, Dining and Off scenes)
- PJ2-4B-YXX-P03 (4-button keypad with Bright, Entertain, Relax, and Off scenes)



Custom-printed 4-button Pico wireless controls

- PJ2-4B-YXX-EL1 (light control with raise/lower, zone/standalone keypad)
- PJ2-4B-YXX-ES1 (shade control with raise/lower, zone/standalone keypad)
- PJ2-4B-YXX-EL2 (light control scene keypad only)
- PJ2-4B-YXX-ES2 (shade control scene keypad only)



Pico wireless controls with nightlight

- PJN-2B-GXX-L01 (light icons)
- PJN-3BRL-GXX-L01 (light icons)



Pico remote for fans

- PJ2-3BRL-YXX-F01 (fan icons)



Car visor transmitter

- LR-3B-H-SW



Pico remote for audio

- PJ2-3BRL-YXX-A02 (audio text/icons)



Pedestals for Pico wireless controls

- L-PED1-XX (single pedestal)
- L-PED2-XX (double pedestal)
- L-PED3-XX (triple pedestal)

Note:
Y denotes finish: "G" for Gloss or "T" for Satin Finish
XX denotes color suffix

Visit lutron.com for up-to-date gloss and satin finish color information

Note:
Y denotes finish: "G" for Gloss or "T" for Satin Finish
XX denotes color suffix

Visit lutron.com for up-to-date gloss and satin finish color information

Sensors



**Ceiling-mount
Radio Powr Savr wireless
occupancy/vacancy sensors**

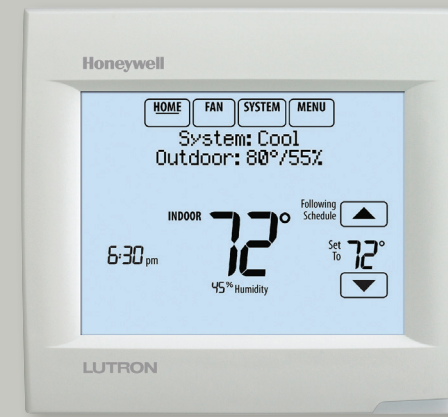
LRF2-OCR2B-P-WH
LRF2-VCR2B-P-WH



**Corner-mount,
wall-mount, hallway Radio Powr Savr
wireless occupancy/vacancy sensors**

LRF2-OKLB-P-WH (corner-mount)
LRF2-VKLB-P-WH (corner-mount)
LRF2-OWLB-P-WH (wall-mount)
LRF2-VWLB-P-WH (wall-mount)
LRF2-OHLB-P-WH (hallway)
LRF2-VHLB-P-WH (hallway)

Temperature controls



Lutron wireless thermostat
L-HWL2-WIFI

Plug-in modules



Plug-in dimming module

RR-3PD-1-SW (Snow White)
RR-3PD-1-MN (Midnight)



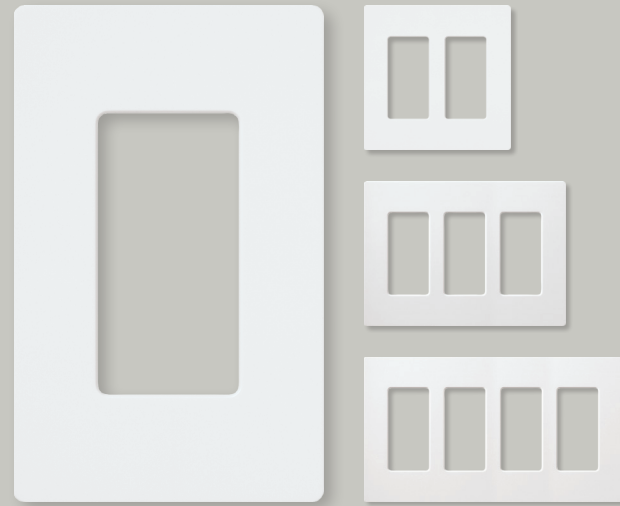
Plug-in appliance module

RR-15APS-1-SW (Snow White)
RR-15APS-1-MN (Midnight)

Visit lutron.com for up-to-date gloss and satin finish color information

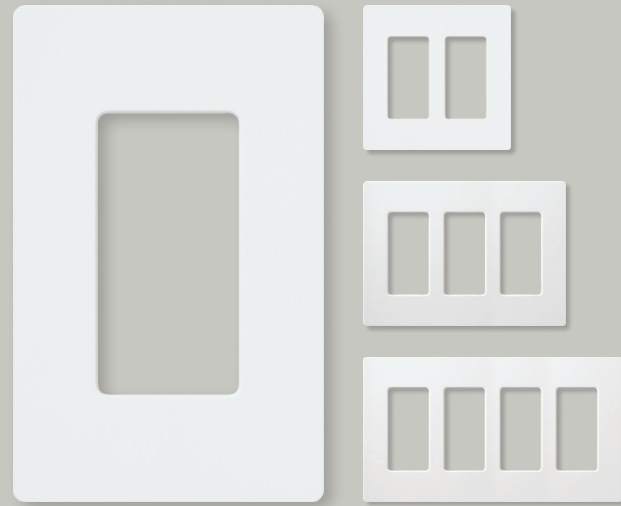
Visit lutron.com for up-to-date gloss and satin finish color information

Wallplates



Claro wallplates

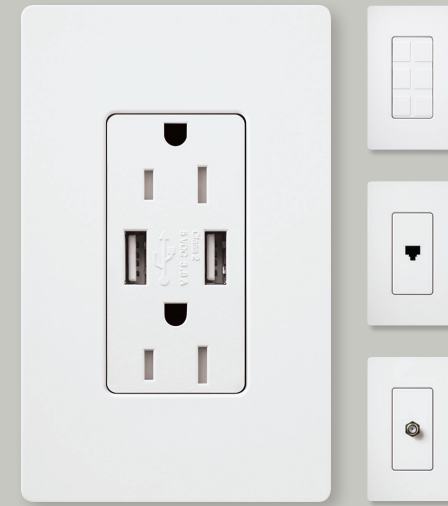
CW-1-XX
CW-2-XX
CW-3-XX
CW-4-XX



Satin wallplates

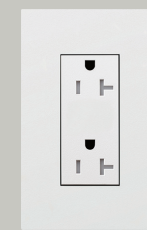
SC-1-XX
SC-2-XX
SC-3-XX
SC-4-XX

Accessories



Designer accessories (Gloss)[†]

CA-6PF-XX (field customizable multi-port frame)
CA-CJ-XX (single cable jack)
CA-PJ-XX (single telephone jack)
CAR-15-GFST-XX (15A GFCI tamper-resistant, self-testing receptacle)
CAR-15-XX (15A receptacle)
CAR-15-DDTR-XX (15A dual dimmable tamper-resistant receptacle)
CAR-15-HDTR-XX (15A half dimmable tamper-resistant receptacle)
CAR-20-DDTR-XX (20A dual dimmable tamper-resistant receptacle)
CAR-20-HDTR-XX (20A half dimmable tamper-resistant receptacle)
CARS-15-TR-XX (15A tamper-resistant receptacle)
CAR-15-UBTR-XX (15A dual USB tamper-resistant receptacle)



New Architectural accessories[†]

LTR-F15-TR-XX (15A duplex tamper-resistant receptacle)
LTR-F20-TR-XX (20A duplex tamper-resistant receptacle)
LTR-F15-UBTR-XX (15A USB tamper-resistant receptacle)



Designer accessories (Satin)[†]

SC-6PF-XX (field customizable multi-port frame)
SC-CJ-XX (single cable jack)
SC-PJ-XX (single telephone jack)
SCR-15-GFST-XX (15A duplex tamper-resistant, self-testing GFCI receptacle)
SCR-15-XX (15A receptacle)
SCR-20-XX (20A receptacle)
SCR-20-GFST-XX (20A duplex tamper-resistant self-testing GFCI receptacle)
SCRS-15-TR-XX (20A duplex tamper-resistant self-testing GFCI receptacle)
SCRS-20-TR-XX (20A duplex tamper-resistant receptacle)
SCR-15-DDTR-XX (15A dual dimmable tamper-resistant receptacle)
SCR-15-HDTR-XX (15A half dimmable tamper-resistant receptacle)
SCR-20-DDTR-XX (20A dual dimmable tamper-resistant receptacle)
SCR-20-HDTR-XX (20A half dimmable tamper-resistant receptacle)
SCR-15-UBTR-XX (15A dual USB tamper-resistant receptacle)

[†] Wallplate sold separately
Note: XX denotes color suffix

Shades



Roller shades*



Honeycomb shades*



Horizontal sheer blinds



Drapery track systems



Roman shade systems



Wood blinds*



Kirbé vertical drapery system



Tensioned shades

* Battery-powered option available

