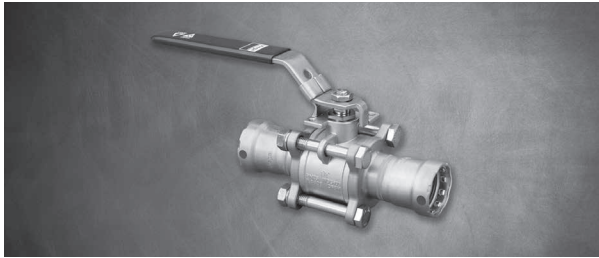


## Product Instructions

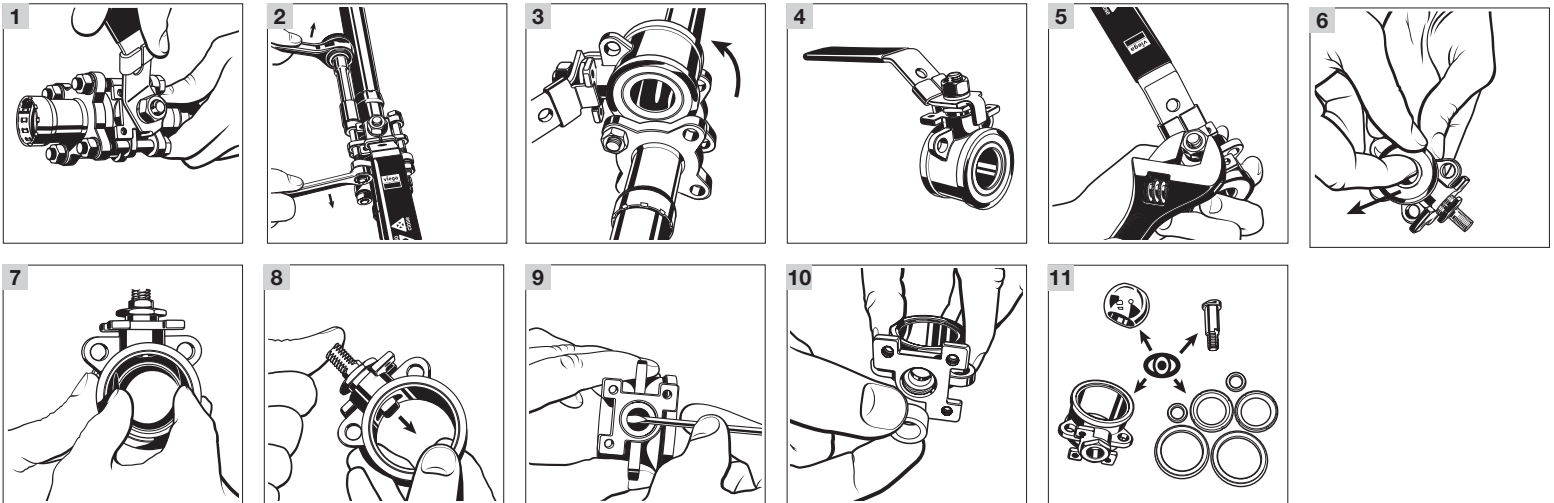
# Viega MegaPress 3-Piece Ball Valve Maintenance



**Viega LLC**  
585 Interlocken Blvd.  
Broomfield, CO 80021

Phone (800) 976-9819  
www.viega.us

PI-MP 530472 0120 3-Piece Ball Valve Maintenance (EN)



EN

## Viega MegaPress 3-Piece Ball Valve Maintenance

For MegaPress, MegaPressFKM, MegaPress 304, and MegaPress 316

**!** Viega products are designed to be installed by licensed and trained plumbing and mechanical professionals who are familiar with Viega products and their installation. **Installation by non-professionals may void Viega LLC's warranty.**

- 1 Shut off the supply line. Open the ball valve.
- 2 Release the flange connections. Remove the bolts.
- 3 Remove the middle section of the ball valve laterally.
- 4 See illustration for example of separated middle section.

- 5 Remove the handle.
- 6 Remove the ball from the valve.
- 7 Remove the PTFE gaskets.
- 8 Press out the spindle from top to bottom.

**!** **CAUTION!** Check the interior components for dirt and damage before mounting. Clean the components if needed.

- 9 Swap the spindle seal. Unscrew the stem nut. Remove the gasket with a suitable tool.
- 10 Replace with new gasket.

**i** Reassemble in the reverse order of the disassembly steps. Refer to the torque table below for body and stem nut torque requirements

- 11 Check to see that all components have been installed after reassembly.

## Operating Conditions

- Valves are not to be used in safety functions such as safety loops or separating incompatible fluids.
- Service shall be compatible with the materials of construction. Valve selection is the responsibility of the designer/engineer/ user to determine if the valve is appropriate for the intended service application.
- Dependent upon the application & the possibility of material deterioration in service, need for periodic inspections are the sole responsibility of the user.
- Supports shall not be welded directly to any part of the valve.
- It is the responsibility of the system designer to implement adequate protection to minimize reaction forces and moments.
- It is the responsibility of the designer/installer to adhere to all applicable codes & standards.
- Valves are not to be used as flow control devices, use is for on-off service only (not to be used for throttling).
- Operating valves while exceeding the temperature and pressure limits may result in valve failures where chemical attack or corrosion generally occurs gradually.

VALVE SIZE (in)	Valve Body Bolt & Nut Size		Bolt Torque +/- 5 ft/lbs (Nm)		Valve Stem Nut Size (mm)		Stem Nut ft/lbs (Nm)	
½	M8 x 55	M8	7.5	(10)	AF 16	7.5	10	
¾	M8 x 65	M8	15	(20)	AF 18	11	15	
1	M10 x 75	M10	15	(20)	AF 21	11	15	
1¼	M10 x 90	M10	22.5	(30)	AF 22	18.5	25	
1½	M10 x 100	M10	22.5	(30)	AF 24	18.5	25	
2	M10 x 100	M10	22.5	(30)	AF 24	18.5	25	