



LED RECESSED MINI PANEL

► **DESIGN & OPTIONS** - LED RECESSED MINI PANEL has a low-profile, classic design that gives it a sleek look with efficient lighting. It features smooth dimming capabilities ranging from 100% to 10% with modern LED dimmers while the 110° beam angle will leave no dark spots on the floor surface. It is also CCT selectable, letting you set it to 2,700K, 3,000K, 3,500K, 4,000K or 5,000K with a simple switch. Comes with a CR190+ in 3", 4", 6", 8", 12" sizes and a WHITE, BRUSHED NICKEL, OIL RUBBED BRONZE or BLACK finish.

► **INSTALLATION** - This fixture has a J-box and requires only 2" of ceiling space, making the installation process quick and easy. It has everything you need in one set. Just cut out the template, connect the J-box wiring to your light switch, and place it into your ceiling. Spring-loaded clips ensure a snug fit to the surface. This fixture is IC rated so there is no can or any other housing required. Refer to install instructions for detailed steps.

► **APPLICATION** - Install the fixture to your ceiling for bright light in your family room, bedroom, hallway, corridor, or any other common area in your living space. It is suitable for Wet locations, making it perfect for spaces with humidity requirements. It can also be used as a complimentary light to an existing ceiling light.

► **ENERGY SAVINGS & EFFICIENCY** - With a lifespan of 54,000 hours, these fixtures are made to last decades under normal operation! This fixture can cut your electric bill by up to 80% instantly and will save you a significant amount of money in its lifetime.

► **CERTIFICATION & WARRANTY** - Buy with confidence: ASD provides a 5-year limited warranty along with UL certification to guarantee top quality products and safety!

Energy Star classification allows participation in rebates; please check the rebate programs available in your state.

Catalog number	
Notes	
Type	



Finish:	White	Bronze
	Nickel	Black

Model	Size	Watts	Voltage	Dimmable	Lumens	CCT	Finish	Dimensions (LxH)	Type
JBR ROUND									
ASD-JBR-3D6AC-WH-6PACK	3 inch	6W	120 V	TRIAC	420/445/460/455/436 lm	5CCT (2,700/3,000/3,500/4,000/5,000 K)	White	4-1/8" x 5/8"	Round
ASD-JBR-3D6AC-NK-6PACK	3 inch	6W	120 V	TRIAC	420/445/460/455/436 lm	5CCT (2,700/3,000/3,500/4,000/5,000 K)	Brushed nickel	4-1/8" x 5/8"	Round
ASD-JBR-3D6AC-BK-6PACK	3 inch	6W	120 V	TRIAC	420/445/460/455/436 lm	5CCT (2,700/3,000/3,500/4,000/5,000 K)	Black	4-1/8" x 5/8"	Round
ASD-JBR-4D12AC-WH-6PACK	4 inch	12W	120 V	TRIAC	780/839/893/861/860 lm	5CCT (2,700/3,000/3,500/4,000/5,000 K)	White	5-5/8" x 5/8"	Round
ASD-JBR-4D12AC-NK-6PACK	4 inch	12W	120 V	TRIAC	780/839/893/861/860 lm	5CCT (2,700/3,000/3,500/4,000/5,000 K)	Brushed nickel	5-5/8" x 5/8"	Round
ASD-JBR-4D12AC-BZ-6PACK	4 inch	12W	120 V	TRIAC	780/839/893/861/860 lm	5CCT (2,700/3,000/3,500/4,000/5,000 K)	Oil rubbed bronze	5-5/8" x 5/8"	Round
ASD-JBR-4D12AC-BK-6PACK	4 inch	12W	120 V	TRIAC	780/839/893/861/860 lm	5CCT (2,700/3,000/3,500/4,000/5,000 K)	Black	5-5/8" x 5/8"	Round
ASD-JBR-6D15AC-WH-6PACK	6 inch	15W	120 V	TRIAC	1,100/1,137/1,225/1,153/1,094 lm	5CCT (2,700/3,000/3,500/4,000/5,000 K)	White	7-1/2" x 5/8"	Round
ASD-JBR-6D15AC-NK-6PACK	6 inch	15W	120 V	TRIAC	1,100/1,137/1,225/1,153/1,094 lm	5CCT (2,700/3,000/3,500/4,000/5,000 K)	Brushed nickel	7-1/2" x 5/8"	Round
ASD-JBR-6D15AC-BZ-6PACK	6 inch	15W	120 V	TRIAC	1,100/1,137/1,225/1,153/1,094 lm	5CCT (2,700/3,000/3,500/4,000/5,000 K)	Oil rubbed bronze	7-1/2" x 5/8"	Round
ASD-JBR-6D15AC-BK-6PACK	6 inch	15W	120 V	TRIAC	1,100/1,137/1,225/1,153/1,094 lm	5CCT (2,700/3,000/3,500/4,000/5,000 K)	Black	7-1/2" x 5/8"	Round
ASD-JBR-8D20AC-WH	8 inch	20W	120 V	TRIAC	1,600/1,650/1,688/1,746/1,633 lm	5CCT (2,700/3,000/3,500/4,000/5,000 K)	White	9-1/2" x 5/8"	Round
ASD-JBR-8D20AC-BK	8 inch	20W	120 V	TRIAC	1,600/1,650/1,688/1,746/1,633 lm	5CCT (2,700/3,000/3,500/4,000/5,000 K)	Black	9-1/2" x 5/8"	Round
ASD-JBR-12D24AC-WH	12 inch	24W	120 V	TRIAC	1,950/2,142/2,138/2,169/2,077 lm	5CCT (2,700/3,000/3,500/4,000/5,000 K)	White	12-1/2" x 5/8"	Round
ASD-JBR-12D24AC-BK	12 inch	24W	120 V	TRIAC	1,950/2,142/2,138/2,169/2,077 lm	5CCT (2,700/3,000/3,500/4,000/5,000 K)	Black	12-1/2" x 5/8"	Round
JBS SQUARE									
ASD-JBS-3D6AC-WH-6PACK	3 inch	6W	120 V	TRIAC	420/442/456/445/430 lm	5CCT (2,700/3,000/3,500/4,000/5,000 K)	White	4-1/8" x 5/8"	Square
ASD-JBS-3D6AC-NK-6PACK	3 inch	6W	120 V	TRIAC	420/442/456/445/430 lm	5CCT (2,700/3,000/3,500/4,000/5,000 K)	Brushed nickel	4-1/8" x 5/8"	Square
ASD-JBS-3D6AC-BK-6PACK	3 inch	6W	120 V	TRIAC	420/442/456/445/430 lm	5CCT (2,700/3,000/3,500/4,000/5,000 K)	Black	4-1/8" x 5/8"	Square
ASD-JBS-4D12AC-WH-6PACK	4 inch	12W	120 V	TRIAC	750/767/736/784/750 lm	5CCT (2,700/3,000/3,500/4,000/5,000 K)	White	5-5/8" x 9/16"	Square
ASD-JBS-4D12AC-NK-6PACK	4 inch	12W	120 V	TRIAC	750/767/736/784/750 lm	5CCT (2,700/3,000/3,500/4,000/5,000 K)	Brushed nickel	5-5/8" x 9/16"	Square
ASD-JBS-4D12AC-BZ-6PACK	4 inch	12W	120 V	TRIAC	750/767/736/784/750 lm	5CCT (2,700/3,000/3,500/4,000/5,000 K)	Oil rubbed bronze	5-5/8" x 9/16"	Square
ASD-JBS-4D12AC-BK-6PACK	4 inch	12W	120 V	TRIAC	750/767/736/784/750 lm	5CCT (2,700/3,000/3,500/4,000/5,000 K)	Black	5-5/8" x 9/16"	Square
ASD-JBS-6D15AC-WH-6PACK	6 inch	15W	120 V	TRIAC	1,050/1,117/1,197/1,144/1,095 lm	5CCT (2,700/3,000/3,500/4,000/5,000 K)	White	7-1/2" x 9/16"	Square
ASD-JBS-6D15AC-NK-6PACK	6 inch	15W	120 V	TRIAC	1,050/1,117/1,197/1,144/1,095 lm	5CCT (2,700/3,000/3,500/4,000/5,000 K)	Brushed nickel	7-1/2" x 9/16"	Square
ASD-JBS-6D15AC-BZ-6PACK	6 inch	15W	120 V	TRIAC	1,050/1,117/1,197/1,144/1,095 lm	5CCT (2,700/3,000/3,500/4,000/5,000 K)	Oil rubbed bronze	7-1/2" x 9/16"	Square
ASD-JBS-6D15AC-BK-6PACK	6 inch	15W	120 V	TRIAC	1,050/1,117/1,197/1,144/1,095 lm	5CCT (2,700/3,000/3,500/4,000/5,000 K)	Black	7-1/2" x 9/16"	Square
ASD-JBS-8D20AC-WH	8 inch	20W	120 V	TRIAC	1,550/1,694/1,743/1,721/1,654 lm	5CCT (2,700/3,000/3,500/4,000/5,000 K)	White	9-1/2" x 9/16"	Square
ASD-JBS-8D20AC-BK	8 inch	20W	120 V	TRIAC	1,550/1,694/1,743/1,721/1,654 lm	5CCT (2,700/3,000/3,500/4,000/5,000 K)	Black	9-1/2" x 9/16"	Square
ASD-JBS-12D24AC-WH	12 inch	24W	120 V	TRIAC	1,900/1,932/2,018/2,006/2,152 lm	5CCT (2,700/3,000/3,500/4,000/5,000 K)	White	12-5/16" x 9/16"	Square
ASD-JBS-12D24AC-BK	12 inch	24W	120 V	TRIAC	1,900/1,932/2,018/2,006/2,152 lm	5CCT (2,700/3,000/3,500/4,000/5,000 K)	Black	12-5/16" x 9/16"	Square

For most up-to-date spec sheets please refer to asd-lighting.com



LED RECESSED MINI PANEL

PRODUCT SPECIFICATIONS:

Construction & Materials				
Housing	Aluminum			
Lens	PC			
Finish color	White, Brushed nickel, Oil rubbed bronze, Black			
Weight	ASD-JBR-3D6AC-WH-6PACK	2.5 lbs (1.1 kg)	ASD-JBS-3D6AC-WH-6PACK	2.6 lbs (1.2 kg)
	ASD-JBR-3D6AC-NK-6PACK		ASD-JBS-3D6AC-NK-6PACK	
	ASD-JBR-3D6AC-BK-6PACK		ASD-JBS-3D6AC-BK-6PACK	
	ASD-JBR-4D12AC-WH-6PACK	3.7 lbs (1.7 kg)	ASD-JBS-4D12AC-WH-6PACK	4.5 lbs (2 kg)
	ASD-JBR-4D12AC-NK-6PACK		ASD-JBS-4D12AC-NK-6PACK	
	ASD-JBR-4D12AC-BZ-6PACK		ASD-JBS-4D12AC-BZ-6PACK	
	ASD-JBR-4D12AC-BK-6PACK	4.8 lbs (2.2 kg)	ASD-JBS-4D12AC-BK-6PACK	5 lbs (2.3 kg)
	ASD-JBR-6D15AC-WH-6PACK		ASD-JBS-6D15AC-WH-6PACK	
	ASD-JBR-6D15AC-NK-6PACK		ASD-JBS-6D15AC-NK-6PACK	
	ASD-JBR-6D15AC-BZ-6PACK	1.1 lbs (0.5 kg)	ASD-JBS-6D15AC-BZ-6PACK	1.1 lbs (0.5 kg)
	ASD-JBR-6D15AC-BK-6PACK		ASD-JBS-6D15AC-BK-6PACK	
	ASD-JBR-8D20AC-WH		ASD-JBS-8D20AC-WH	
ASD-JBR-8D20AC-BK	1.5 lbs (0.7 kg)	ASD-JBS-8D20AC-BK	1.8 lbs (0.8 kg)	
ASD-JBR-12D24AC-WH		ASD-JBS-12D24AC-WH		
ASD-JBR-12D24AC-BK		ASD-JBS-12D24AC-BK		
Environmental system				
Work Environment	Suitable for Wet Locations			
Operating Temperature	-4°F to 104°F (-20°C to 40°C)			
L-70 Life	> 54,000 hrs			
Optical system				
Luminous flux	ASD-JBR-3D6AC-WH-6PACK	420/445/460/455/436 lm	ASD-JBS-3D6AC-WH-6PACK	420/442/456/445/430 lm
	ASD-JBR-3D6AC-NK-6PACK		ASD-JBS-3D6AC-NK-6PACK	
	ASD-JBR-3D6AC-BK-6PACK		ASD-JBS-3D6AC-BK-6PACK	
	ASD-JBR-4D12AC-WH-6PACK	780/839/893/861/860 lm	ASD-JBS-4D12AC-WH-6PACK	750/767/736/784/750 lm
	ASD-JBR-4D12AC-NK-6PACK		ASD-JBS-4D12AC-NK-6PACK	
	ASD-JBR-4D12AC-BZ-6PACK		ASD-JBS-4D12AC-BZ-6PACK	
	ASD-JBR-4D12AC-BK-6PACK	1,100/1,137/1,225/1,153/1,094 lm	ASD-JBS-4D12AC-BK-6PACK	1,050/1,117/1,197/1,144/1,095 lm
	ASD-JBR-6D15AC-WH-6PACK		ASD-JBS-6D15AC-WH-6PACK	
	ASD-JBR-6D15AC-NK-6PACK		ASD-JBS-6D15AC-NK-6PACK	
	ASD-JBR-6D15AC-BZ-6PACK	1,600/1,650/1,688/1,746/1,633 lm	ASD-JBS-6D15AC-BZ-6PACK	1,550/1,694/1,743/1,721/1,654 lm
	ASD-JBR-6D15AC-BK-6PACK		ASD-JBS-6D15AC-BK-6PACK	
	ASD-JBR-8D20AC-WH		ASD-JBS-8D20AC-WH	
ASD-JBR-8D20AC-BK	1,950/2,142/2,138/2,169/2,077 lm	ASD-JBS-8D20AC-BK	1,900/1,932/2,018/2,006/2,152 lm	
ASD-JBR-12D24AC-WH		ASD-JBS-12D24AC-WH		
ASD-JBR-12D24AC-BK		ASD-JBS-12D24AC-BK		
Color temperature	5CCT (2,700/3,000/3,500/4,000/5,000 K)			
CRI	> 90			
Electrical system				
Input voltage	120 V			
Max input current	ASD-JBR-3D6AC-WH-6PACK	0.07 A	ASD-JBS-3D6AC-WH-6PACK	0.07 A
	ASD-JBR-3D6AC-NK-6PACK		ASD-JBS-3D6AC-NK-6PACK	
	ASD-JBR-3D6AC-BK-6PACK		ASD-JBS-3D6AC-BK-6PACK	
	ASD-JBR-4D12AC-WH-6PACK	0.14 A	ASD-JBS-4D12AC-WH-6PACK	0.14 A
	ASD-JBR-4D12AC-NK-6PACK		ASD-JBS-4D12AC-NK-6PACK	
	ASD-JBR-4D12AC-BZ-6PACK		ASD-JBS-4D12AC-BZ-6PACK	
	ASD-JBR-4D12AC-BK-6PACK	0.17 A	ASD-JBS-4D12AC-BK-6PACK	0.17 A
	ASD-JBR-6D15AC-WH-6PACK		ASD-JBS-6D15AC-WH-6PACK	
	ASD-JBR-6D15AC-NK-6PACK		ASD-JBS-6D15AC-NK-6PACK	
	ASD-JBR-6D15AC-BZ-6PACK	0.23 A	ASD-JBS-6D15AC-BZ-6PACK	0.23 A
	ASD-JBR-6D15AC-BK-6PACK		ASD-JBS-6D15AC-BK-6PACK	
	ASD-JBR-8D20AC-WH		ASD-JBS-8D20AC-WH	
ASD-JBR-8D20AC-BK	0.27 A	ASD-JBS-8D20AC-BK	0.27 A	
ASD-JBR-12D24AC-WH		ASD-JBS-12D24AC-WH		
ASD-JBR-12D24AC-BK		ASD-JBS-12D24AC-BK		

For most up-to-date spec sheets please refer to asd-lighting.com



LED RECESSED MINI PANEL

Electrical system									
Inrush current (Action time)	ASD-JBR-3D6AC-WH-6PACK	16 A (0.16 S)	ASD-JBS-3D6AC-WH-6PACK			16 A (0.16 S)	ASD-JBS-3D6AC-WH-6PACK		
	ASD-JBR-3D6AC-NK-6PACK		ASD-JBS-3D6AC-NK-6PACK				ASD-JBS-3D6AC-NK-6PACK		
	ASD-JBR-3D6AC-BK-6PACK		ASD-JBS-3D6AC-BK-6PACK				ASD-JBS-3D6AC-BK-6PACK		
	ASD-JBR-4D12AC-WH-6PACK	23 A (0.16 S)	ASD-JBS-4D12AC-WH-6PACK			23 A (0.16 S)	ASD-JBS-4D12AC-WH-6PACK		
	ASD-JBR-4D12AC-NK-6PACK		ASD-JBS-4D12AC-NK-6PACK				ASD-JBS-4D12AC-NK-6PACK		
	ASD-JBR-4D12AC-BZ-6PACK		ASD-JBS-4D12AC-BZ-6PACK				ASD-JBS-4D12AC-BZ-6PACK		
	ASD-JBR-4D12AC-BK-6PACK	29 A (0.18 S)	ASD-JBS-4D12AC-BK-6PACK			29 A (0.18 S)	ASD-JBS-4D12AC-BK-6PACK		
	ASD-JBR-6D15AC-WH-6PACK		ASD-JBS-6D15AC-WH-6PACK				ASD-JBS-6D15AC-WH-6PACK		
	ASD-JBR-6D15AC-NK-6PACK		ASD-JBS-6D15AC-NK-6PACK				ASD-JBS-6D15AC-NK-6PACK		
	ASD-JBR-6D15AC-BZ-6PACK	39 A (0.18 S)	ASD-JBS-6D15AC-BZ-6PACK			39 A (0.18 S)	ASD-JBS-6D15AC-BZ-6PACK		
	ASD-JBR-6D15AC-BK-6pack		ASD-JBS-6D15AC-BK-6PACK				ASD-JBS-6D15AC-BK-6PACK		
	ASD-JBR-8D20AC-WH		ASD-JBS-8D20AC-WH				ASD-JBS-8D20AC-WH		
ASD-JBR-8D20AC-BK	41 A (0.18 S)	ASD-JBS-8D20AC-BK			41 A (0.18 S)	ASD-JBS-8D20AC-BK			
ASD-JBR-12D24AC-WH		ASD-JBS-12D24AC-WH				ASD-JBS-12D24AC-WH			
ASD-JBR-12D24AC-BK		ASD-JBS-12D24AC-BK				ASD-JBS-12D24AC-BK			
Off state power	0 W								
Power consumption	ASD-JBR-3D6AC-WH-6PACK	6 W	ASD-JBS-3D6AC-WH-6PACK			6 W	ASD-JBS-3D6AC-WH-6PACK		
	ASD-JBR-3D6AC-NK-6PACK		ASD-JBS-3D6AC-NK-6PACK				ASD-JBS-3D6AC-NK-6PACK		
	ASD-JBR-3D6AC-BK-6PACK		ASD-JBS-3D6AC-BK-6PACK				ASD-JBS-3D6AC-BK-6PACK		
	ASD-JBR-4D12AC-WH-6PACK	12 W	ASD-JBS-4D12AC-WH-6PACK			12 W	ASD-JBS-4D12AC-WH-6PACK		
	ASD-JBR-4D12AC-NK-6PACK		ASD-JBS-4D12AC-NK-6PACK				ASD-JBS-4D12AC-NK-6PACK		
	ASD-JBR-4D12AC-BZ-6PACK		ASD-JBS-4D12AC-BZ-6PACK				ASD-JBS-4D12AC-BZ-6PACK		
	ASD-JBR-4D12AC-BK-6PACK	15 W	ASD-JBS-4D12AC-BK-6PACK			15 W	ASD-JBS-4D12AC-BK-6PACK		
	ASD-JBR-6D15AC-WH-6PACK		ASD-JBS-6D15AC-WH-6PACK				ASD-JBS-6D15AC-WH-6PACK		
	ASD-JBR-6D15AC-NK-6PACK		ASD-JBS-6D15AC-NK-6PACK				ASD-JBS-6D15AC-NK-6PACK		
	ASD-JBR-6D15AC-BZ-6PACK	20 W	ASD-JBS-6D15AC-BZ-6PACK			20 W	ASD-JBS-6D15AC-BZ-6PACK		
	ASD-JBR-6D15AC-BK-6PACK		ASD-JBS-6D15AC-BK-6PACK				ASD-JBS-6D15AC-BK-6PACK		
	ASD-JBR-8D20AC-WH		ASD-JBS-8D20AC-WH				ASD-JBS-8D20AC-WH		
ASD-JBR-8D20AC-BK	24 W	ASD-JBS-8D20AC-BK			24 W	ASD-JBS-8D20AC-BK			
ASD-JBR-12D24AC-WH		ASD-JBS-12D24AC-WH				ASD-JBS-12D24AC-WH			
ASD-JBR-12D24AC-BK		ASD-JBS-12D24AC-BK				ASD-JBS-12D24AC-BK			
Power factor	> 0.9								
Output voltage	36 V								
Max output current	ASD-JBR-3D6AC-WH-6PACK	0.146 A	ASD-JBS-3D6AC-WH-6PACK			0.146 A	ASD-JBS-3D6AC-WH-6PACK		
	ASD-JBR-3D6AC-NK-6PACK		ASD-JBS-3D6AC-NK-6PACK				ASD-JBS-3D6AC-NK-6PACK		
	ASD-JBR-3D6AC-BK-6PACK		ASD-JBS-3D6AC-BK-6PACK				ASD-JBS-3D6AC-BK-6PACK		
	ASD-JBR-4D12AC-WH-6PACK	0.293 A	ASD-JBS-4D12AC-WH-6PACK			0.293 A	ASD-JBS-4D12AC-WH-6PACK		
	ASD-JBR-4D12AC-NK-6PACK		ASD-JBS-4D12AC-NK-6PACK				ASD-JBS-4D12AC-NK-6PACK		
	ASD-JBR-4D12AC-BZ-6PACK		ASD-JBS-4D12AC-BZ-6PACK				ASD-JBS-4D12AC-BZ-6PACK		
	ASD-JBR-4D12AC-BK-6PACK	0.366 A	ASD-JBS-4D12AC-BK-6PACK			0.366 A	ASD-JBS-4D12AC-BK-6PACK		
	ASD-JBR-6D15AC-WH-6PACK		ASD-JBS-6D15AC-WH-6PACK				ASD-JBS-6D15AC-WH-6PACK		
	ASD-JBR-6D15AC-NK-6PACK		ASD-JBS-6D15AC-NK-6PACK				ASD-JBS-6D15AC-NK-6PACK		
	ASD-JBR-6D15AC-BZ-6PACK	0.488 A	ASD-JBS-6D15AC-BZ-6PACK			0.488 A	ASD-JBS-6D15AC-BZ-6PACK		
	ASD-JBR-6D15AC-BK-6PACK		ASD-JBS-6D15AC-BK-6PACK				ASD-JBS-6D15AC-BK-6PACK		
	ASD-JBR-8D20AC-WH		ASD-JBS-8D20AC-WH				ASD-JBS-8D20AC-WH		
ASD-JBR-8D20AC-BK	0.586 A	ASD-JBS-8D20AC-BK			0.586 A	ASD-JBS-8D20AC-BK			
ASD-JBR-12D24AC-WH		ASD-JBS-12D24AC-WH				ASD-JBS-12D24AC-WH			
ASD-JBR-12D24AC-BK		ASD-JBS-12D24AC-BK				ASD-JBS-12D24AC-BK			
Surge protection DM/CM	2.5 kV / 2.5 kV								
Dimming range									
10-100%									
Dimming compatible controls									
Brand	Lutron					Leviton			
Models	CTCL-153PDH-WH	MACL-153M-WH	SLV-600P-WH	DV-600P	S-600P	DB33K1	6633-P	6683	
	DVW-603PGH-WH	CT-603PGH-WH	S-600PR-WH	NT-1000	4X603	1A2305	VP106	6674	
	MIR-600THW-WH	DVCL-163P-WH	CTCL-153P	S-603P		1F4205	IPL06	6672	
Regular and voluntary certifications									
5-year limited warranty		UL certified			Energy Star listed				

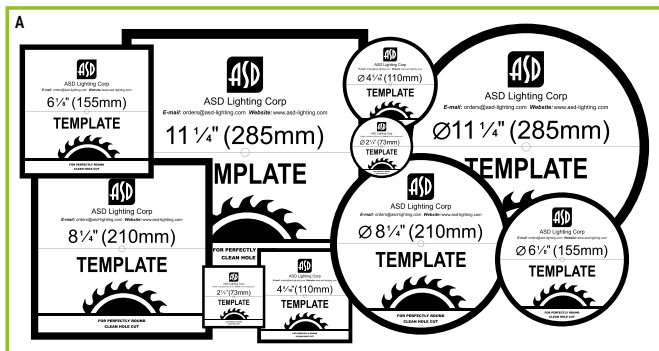
For most up-to-date spec sheets please refer to asd-lighting.com



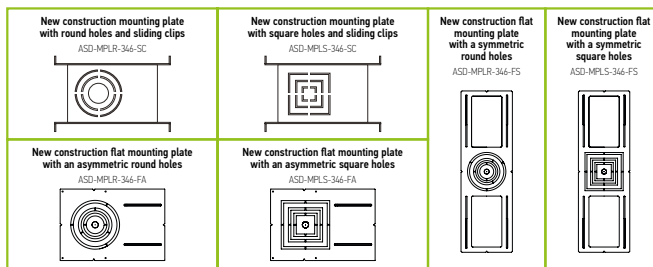
LED RECESSED MINI PANEL

PACKAGE CONTENTS:

Description	Q-ty
LED Recessed Mini Panel	1
Template for 3, 4, 6, 8 or 12 inch (A)	1
Box	1



ACCESSORIES (sold separately):



ACCESSORY COMPATIBILITY LIST:

Accessories	Models	New construction mounting plate with round holes and sliding clips						
		ASD-MPLR-346-SC	ASD-MPLS-346-SC	ASD-MPLR-346-FA	ASD-MPLS-346-FA	ASD-MPLR-346-FS	ASD-MPLS-346-FS	ASD-MPLR-346-FS
ASD-JBR	3"	•						
	4"	•						
	6"	•						
	8"							
	12"							
ASD-JBS	3"		•					
	4"		•					
	6"		•					
	8"							
	12"							

INSTALLATION GUIDE

IMPORTANT SAFETY INFORMATION:

Please read all the instructions below before installation.

- ▶ Make sure that the supply voltage corresponds to the rated product voltage.
- ▶ The product must be installed by a qualified electrician in accordance with the National Electrical Code and corresponding local codes.
- ▶ If the product is damaged, do not use it.

⚠ WARNING

RISK OF PERSONAL INJURY – READ and follow all WARNINGS and installation instructions. Keep or give to the owner for future reference.

Risk of cuts: Wear gloves to prevent cuts or abrasions when removing from carton, handling, installing, and maintaining this product.

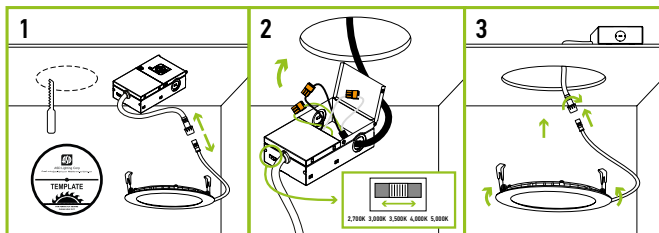
Risk of electric shock: This product must be installed in accordance with the applicable installation code by a person familiar with the construction and operation of the product and the hazards involved.

Risk of Fire: Minimum 194°F supply conductors. Consult a qualified electrician to ensure correct branch circuit conductor.

ASD® assumes no responsibility for claims arising out of improper or careless installation or handling of this product.

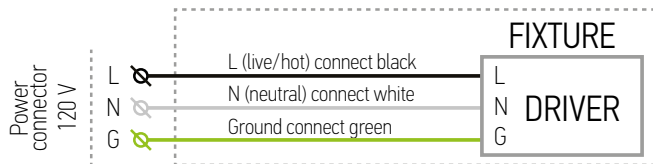
INSTALLATION STEPS:

1. Use template to cut an appropriate sized hole. Disconnect the fixture from the junction box.
2. Open junction box. Connect the wires: Black to Black, White to White, Green to Green. Secure the connection with quick connector. Choose needed color temperature by adjusting the switch. Close the junction box.
3. Insert the junction box into the cut hole, leaving the connection cable outside. Connect the fixture to the Junction box inserting the cable and securing it with a cap. Push the spring loaded clips upwards and insert the fixture base into the mounting hole. Release the clips, so the fixture fits snugly.



* The fixture is suitable for ceiling thickness of 10-25 mm.

ELECTRICAL SCHEMATIC DIAGRAM:

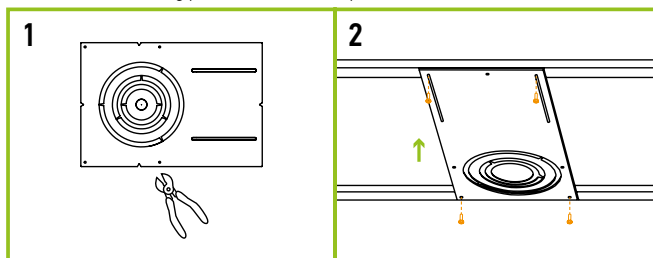


MOUNTING PLATE INSTALLATION

ASD-MPLR-346-SC	ASD-MPLS-346-SC	ASD-MPLR-346-FA
ASD-MPLS-346-FA	ASD-MPLR-346-FS	ASD-MPLS-346-FS

sold separately:

1. Remove the metal ring from the mounting plate according to the size of fixture.
2. Place the mounting plate and secure its position with screws on the beams.



For most up-to-date spec sheets please refer to asd-lighting.com



LED RECESSED MINI PANEL

ORDERING INFORMATION

Model	UPC	Pcs. per carton	Carton size	Carton weight	GTIN 14
JBR ROUND					
ASD-JBR-3D6AC-WH-6PACK	810050737449	2	9.8" x 8.5" x 8.7"	6.8 lb	10810050737446
ASD-JBR-3D6AC-NK-6PACK	810050738385	2	9.8" x 8.5" x 8.7"	6.8 lb	20810050738389
ASD-JBR-3D6AC-BK-6PACK	810050737456	2	9.8" x 8.5" x 8.7"	6.8 lb	10810050737453
ASD-JBR-4D12AC-WH-6PACK	810050737197	2	12" x 5.9" x 5.3"	9.9 lb	10810050737194
ASD-JBR-4D12AC-NK-6PACK	810050738392	2	12" x 5.9" x 5.3"	9.9 lb	20810050738396
ASD-JBR-4D12AC-BZ-6PACK	810050738903	2	12" x 5.9" x 5.3"	9.9 lb	10810050738900
ASD-JBR-4D12AC-BK-6PACK	810050737210	2	12" x 5.9" x 5.3"	9.9 lb	10810050737217
ASD-JBR-6D15AC-WH-6PACK	810050737241	2	13" x 12.2" x 8.1"	12.1 lb	10810050737248
ASD-JBR-6D15AC-NK-6PACK	810050738408	2	13" x 12.2" x 8.1"	12.1 lb	20810050738402
ASD-JBR-6D15AC-BZ-6PACK	810050738910	2	13" x 12.2" x 8.1"	12.1 lb	10810050738917
ASD-JBR-6D15AC-BK-6PACK	810050737265	2	13" x 12.2" x 8.1"	12.1 lb	10810050737262
ASD-JBR-8D20AC-WH	810050737470	4	9.6" x 9.6" x 9.4"	6 lb	10810050737477
ASD-JBR-8D20AC-BK	810050737487	4	9.6" x 9.6" x 9.4"	6 lb	10810050737484
ASD-JBR-12D24AC-WH	810050737494	4	12.4" x 9.6" x 12.4"	7.9 lb	10810050737491
ASD-JBR-12D24AC-BK	810050737500	4	12.4" x 9.6" x 12.4"	7.9 lb	10810050737507
JBS SQUARE					
ASD-JBS-3D6AC-WH-6PACK	810050737524	2	9.8" x 8.5" x 8.7"	7.3 lb	10810050737521
ASD-JBS-3D6AC-NK-6PACK	810050738415	2	9.8" x 8.5" x 8.7"	7.3 lb	20810050738419
ASD-JBS-3D6AC-BK-6PACK	810050737548	2	9.8" x 8.5" x 8.7"	7.3 lb	10810050737545
ASD-JBS-4D12AC-WH-6PACK	810050737289	2	12.6" x 12.6" x 6.1"	11.5 lb	10810050737286
ASD-JBS-4D12AC-NK-6PACK	810050738422	2	12.6" x 12.6" x 6.1"	11.5 lb	20810050738426
ASD-JBS-4D12AC-BZ-6PACK	810050738927	2	12.6" x 12.6" x 6.1"	11.5 lb	10810050738924
ASD-JBS-4D12AC-BK-6PACK	810050737302	2	12.6" x 12.6" x 6.1"	11.5 lb	10810050737309
ASD-JBS-6D15AC-WH-6PACK	810050737326	2	14" x 12.2" x 8.1"	12.8 lb	10810050737323
ASD-JBS-6D15AC-NK-6PACK	810050738439	2	14" x 12.2" x 8.1"	12.8 lb	20810050738433
ASD-JBS-6D15AC-BZ-6PACK	810050738934	2	14" x 12.2" x 8.1"	12.8 lb	10810050738931
ASD-JBS-6D15AC-BK-6PACK	810050737562	2	14" x 12.2" x 8.1"	12.8 lb	10810050737569
ASD-JBS-8D20AC-WH	810050737579	4	10.4" x 9.6" x 9.4"	6.6 lb	10810050737576
ASD-JBS-8D20AC-BK	810050737586	4	10.4" x 9.6" x 9.4"	6.6 lb	10810050737583
ASD-JBS-12D24AC-WH	810050737593	4	13.4" x 9.6" x 12.3"	9.5 lb	10810050737590
ASD-JBS-12D24AC-BK	810050737609	4	13.4" x 9.6" x 12.3"	9.5 lb	10810050737606

ACCESSORIES:

Model	Name	Materials	Weight	Dimensions	UPC			
ASD-MPLR-346-SC	New construction mounting plate with round holes and sliding clips	Iron	1.1 lb	14-3/8" x 10-9/16" x 1-5/8"	810050731577			
ASD-MPLS-346-SC	New construction mounting plate with square holes and sliding clips	Iron	1.1 lb	14-3/8" x 10-9/16" x 1-5/8"	810050731843			
ASD-MPLR-346-FA	New construction flat mounting plate with an asymmetric round holes	Iron	0.9 lb	13-1/4" x 9-1/16"	810050733854			
ASD-MPLS-346-FA	New construction flat mounting plate with an asymmetric square holes	Iron	0.9 lb	13-1/4" x 9-1/16"	810050733861			
ASD-MPLR-346-FS	New construction flat mounting plate with a symmetric round holes	Iron	1 lb	26" x 8-1/4"	810050733878			
ASD-MPLS-346-FS	New construction flat mounting plate with a symmetric square holes	Iron	1 lb	26" x 8-1/4"	810050733885			
Model	Pcs. in middle box	Middle box size	Middle box weight	GTIN 14 in middle box	Pcs. per carton	Carton size	Carton weight	GTIN 14 in carton
ASD-MPLR-346-SC	6	15" x 11.2" x 7.5"	7.7 lb	10810050731574	12	23.2" x 15.6" x 8.3"	17 lb	20810050731571
ASD-MPLS-346-SC	6	15" x 11.2" x 7.5"	7.5 lb	10810050731840	12	23.2" x 15.6" x 8.3"	16.4 lb	20810050731847
ASD-MPLR-346-FA	6	9.3" x 0.6" x 13.6"	5.6 lb	10810050733851	24	14.4" x 9.8" x 3.1"	22.5 lb	20810050733858
ASD-MPLS-346-FA	6	9.3" x 0.6" x 13.6"	5.5 lb	10810050733868	24	14.4" x 9.8" x 3.1"	22.9 lb	20810050733865
ASD-MPLR-346-FS	6	8.5" x 0.6" x 26.4"	6.1 lb	10810050733875	24	27.2" x 9.1" x 3.1"	25.2 lb	20810050733872
ASD-MPLS-346-FS	6	8.5" x 0.6" x 26.4"	6 lb	10810050733882	24	27.2" x 9.1" x 3.1"	24.6 lb	20810050733889

For most up-to-date spec sheets please refer to asd-lighting.com

ASD LIGHTING CORP

E-mail: orders@asd-lighting.com | Web site: www.asd-lighting.com

