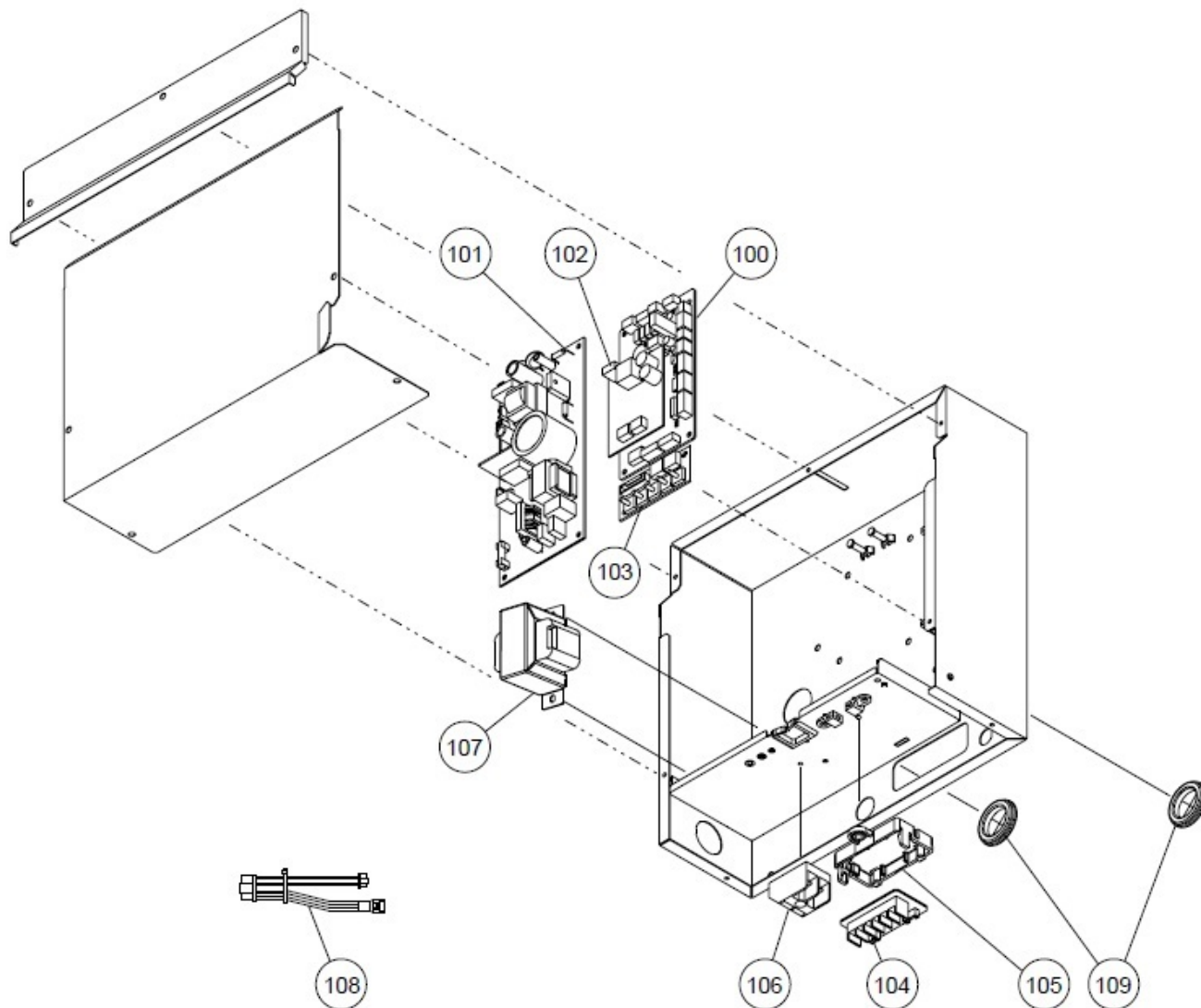


Diagrams for Model ARUM24TLAV2

Model Information: [ARUM24TLAV2](#) VRF Inner Unit - H/R 24,000 BTU - Medium static pressure duct

A complete list of parts used in this diagram is listed below.

MODELS : ARUM24/ 30/ 36TLAV2



Listed below are parts available for ARUM24TLAV2. To purchase a part enter the desired quantity on the parts line. Once you have selected parts to purchase, click the Submit button located at the bottom of the list.

| In-Stock Rating | | | | | |
|-----------------|-------------|---------|--------------|--------------|--|
| Item # | Part # | Price | East Coast | West Coast | Description |
| 100 | K9711039217 | \$41.13 | Fair | Not in Stock | CONTROLLER PCB VAB K17PD-1905HSE-C1 |
| 101 | K9711356024 | \$30.58 | Not in Stock | Not in Stock | FILTER PCB VAB K18TT-1802HSE-P0 |
| 102 | K9709373026 | \$38.77 | Good | Good | COMMUNICATION PCB IN VAB K11AI-1600HSE-CA1 |
| 103 | K9707732030 | \$14.16 | Fair | Fair | SWITCH PCB ASSY VAB K06EL-1600HSE-SW0 |
| 104 | K9707736014 | \$12.35 | Low | Good | TERMINAL PCB VAB# K07CQ-0700HSE-TM0 |
| 105 | K9378345010 | \$1.00 | Low | Not in Stock | HOLDER B POWER TERMINAL VAB PS V-0 |
| 106 | K9703873027 | \$3.93 | Good | Low | TERMINAL 2P VAB AR+* HP-T3039-5 |
| 107 | K9707457018 | \$9.10 | Low | Low | REACTOR ASSY AR*HFI HVAB# RLEY41-18 22MH 1.8A TAMK1028 |

Diagrams for Model ARUM24TLAV2

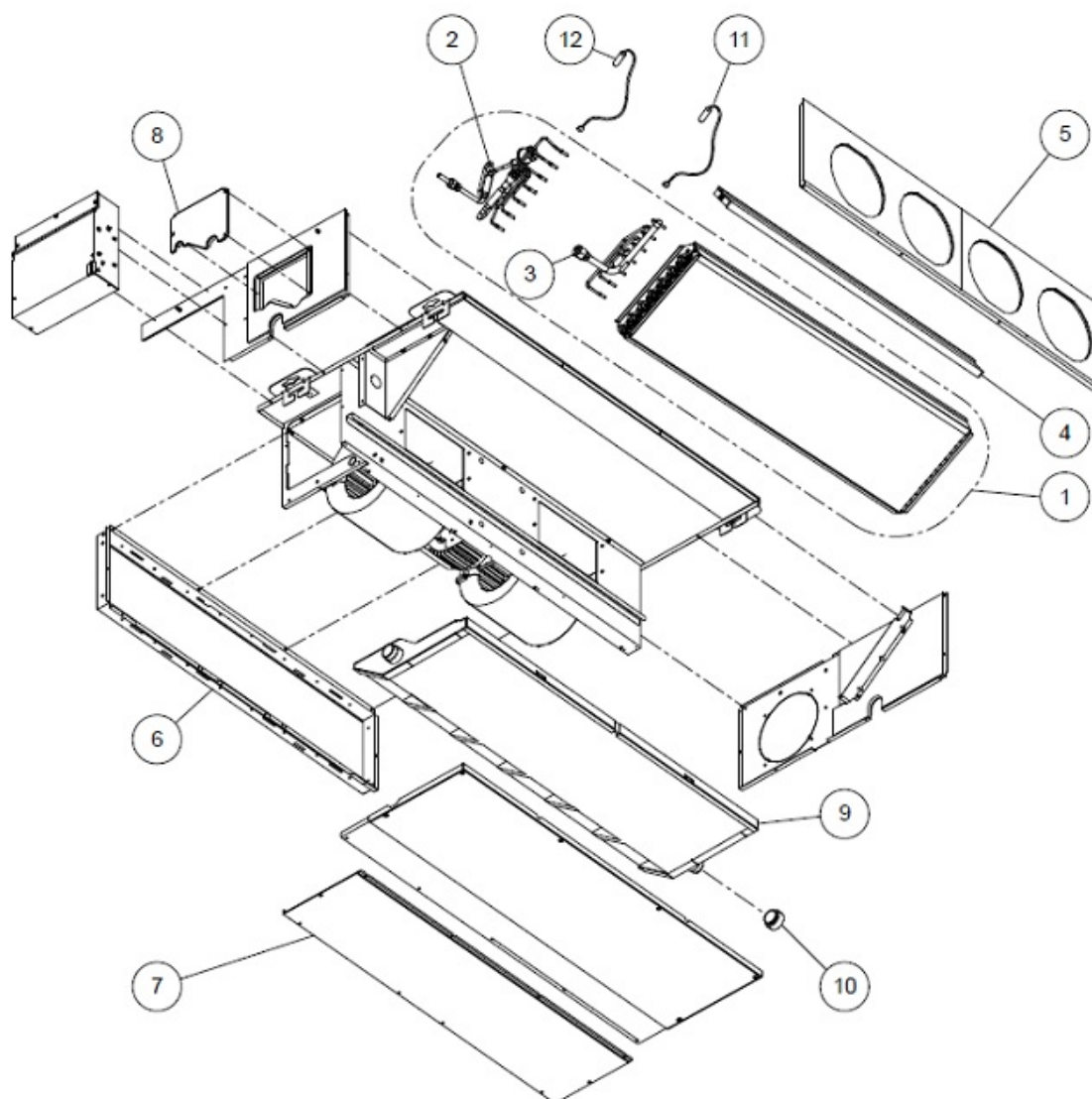
| | | | | | |
|-------------------|-------------|--------|--------------|------|-------------------------------------|
| 108 | K9707854022 | \$1.56 | Good | Good | WIRE TH CONNECT VAB UL1430 #24 4P |
| 109 | K9352173011 | \$1.96 | Not in Stock | Low | CAP CABLE HVAB # RUBBER (EPDM 1YR5) |
| <div>SUBMIT</div> | | | | | |

Diagrams for Model ARUM24TLAV2

Model Information: [ARUM24TLAV2](#) VRF Inner Unit - H/R 24,000 BTU - Medium static pressure duct

A complete list of parts used in this diagram is listed below.

MODELS : ARUM24/ 30/ 36TLAV2



Listed below are parts available for ARUM24TLAV2. To purchase a part enter the desired quantity on the parts line. Once you have selected parts to purchase, click the Submit button located at the bottom of the list.

| Item # | Part # | Price | In-Stock Rating | | Description |
|--------|-------------|----------|-----------------|--------------|---|
| | | | East Coast | West Coast | |
| 1 | K9383816246 | \$271.96 | Low | Not in Stock | EVAPORATOR TA VAB |
| 10 | K9356541007 | \$2.14 | Low | Fair | DRAIN CAP ARUM24+ VAB# RUBBER |
| 11 | K9900883010 | \$2.54 | Not in Stock | Good | THERMISTOR PIPE-IN VAB EP6M513NT-14C016 L=900mm |
| 12 | K9900509026 | \$3.91 | Not in Stock | Good | THERMISTOR PIPE OUT VAB# PT2M-51G-F1-3 BLUE CONNECTOR |
| 2 | K9380307716 | \$89.19 | Not in Stock | Low | DISTRIBUTOR ASSY VAB BRAZING |
| 3 | K9371333267 | \$21.18 | Not in Stock | Low | COUPLING PP ASSY AL64 VR2 BRAZING |

Diagrams for Model ARUM24TLAV2

| | | | | | |
|---|-------------|---------|--------------|--------------|--|
| 4 | K9374515011 | \$44.57 | Not in Stock | Low | SEAL PANEL EVAP ARUM VAB# SGCC Z-C-X Z22 TO.8 |
| 5 | K9374510016 | \$20.26 | Not in Stock | Low | OUTLET PANEL ARUM24~36 VII# SGCC Z-C-X Z22 T0.8 |
| 6 | K9374216017 | \$11.34 | Not in Stock | Low | INTAKE FRAME ARUM24~36 VII# SGCCZ-C-Z22 T0.8 |
| 7 | K9374512010 | \$28.36 | Not in Stock | Low | INTAKE COVER SA ARUM24~36 VII ARY25UUAN, SGCC |
| 8 | K9374514014 | \$2.57 | Not in Stock | Low | BRACKET PIPE ASSY ARUM24+ VII# SGCC Z-C-X Z22 TO.7 |
| 9 | K9374513017 | \$26.33 | Not in Stock | Not in Stock | DRAIN PAN ASSY ARUM VAB# SGCC N-M-O Z22 PAINT |

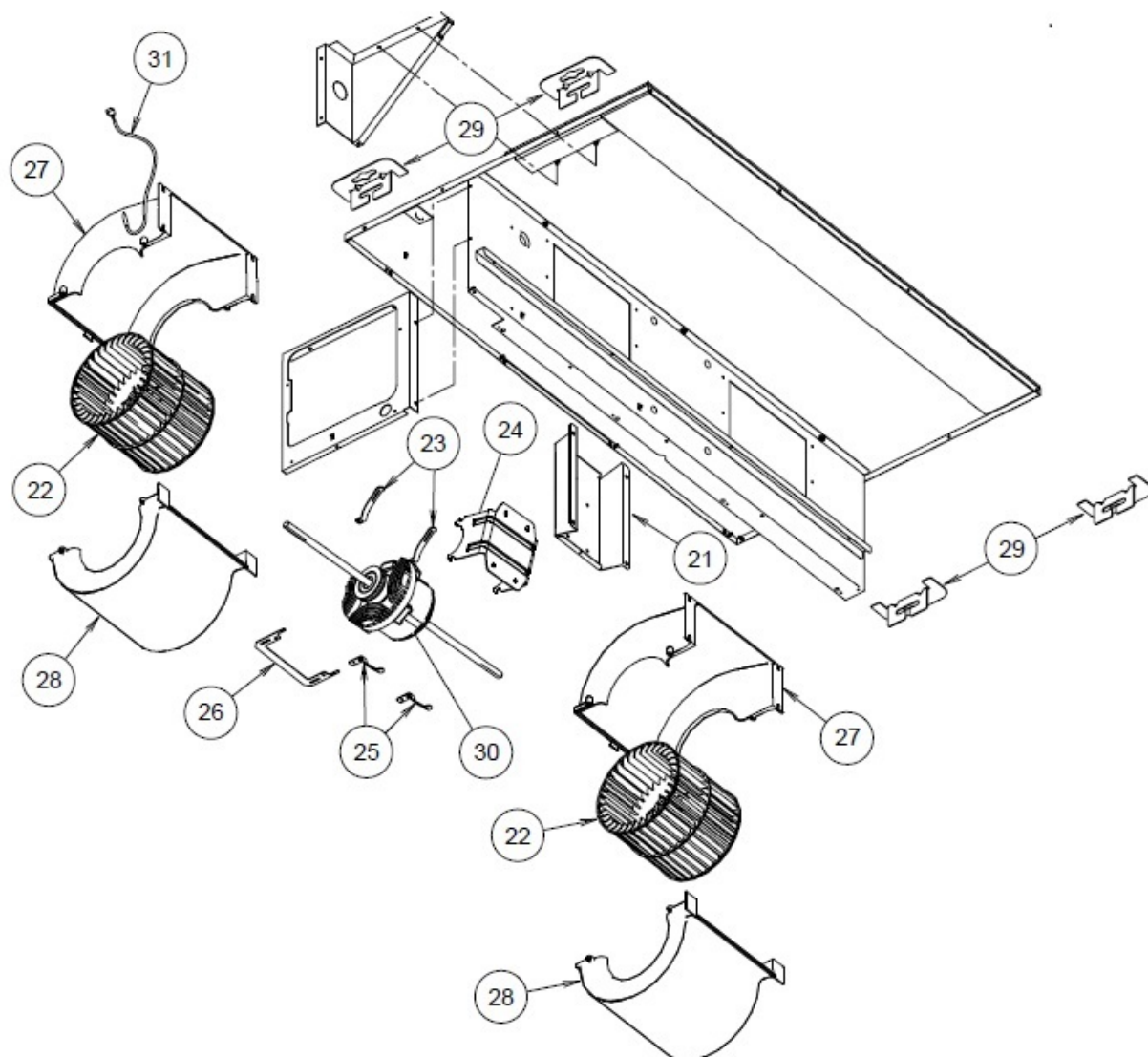
SUBMIT

Diagrams for Model ARUM24TLAV2

Model Information: [ARUM24TLAV2](#) VRF Inner Unit - H/R 24,000 BTU - Medium static pressure duct

A complete list of parts used in this diagram is listed below.

MODELS : ARUM24/ 30/ 36TLAV2



Listed below are parts available for ARUM24TLAV2. To purchase a part enter the desired quantity on the parts line. Once you have selected parts to purchase, click the Submit button located at the bottom of the list.

| Item # | Part # | Price | In-Stock Rating | | Description |
|--------|-------------|--------|-----------------|--------------|--|
| | | | East Coast | West Coast | |
| 21 | K9374230013 | \$4.24 | Not in Stock | Low | BRACKET MOTOR ARUM24+ VII# SGCC Z-C-X Z22 T1.2 METAL |
| 22 | K9356531046 | \$6.67 | Not in Stock | Not in Stock | SIRROCO FAN ARUM30 VR2 PPG |
| 23 | K9378033023 | \$1.00 | Not in Stock | Low | BAND MOTOR ARUM24-36TLAV VR2 |
| 24 | K9378002012 | \$1.97 | Not in Stock | Low | MOUNT MOTOR ARUM24-36TLAV VR2 |
| 25 | K9378031012 | \$1.97 | Not in Stock | Low | BAND MOTOR W/O NUT VR2 |

Diagrams for Model ARUM24TLAV2

| | | | | | |
|-------------------|-------------|----------|--------------|--------------|---|
| 26 | K9378003019 | \$1.00 | Not in Stock | Low | BAND RFM MOTOR ARUM24-36 VR2 |
| 27 | K9374233021 | \$5.44 | Low | Not in Stock | CASING A AL38 VR2 PS HT-57 BLK |
| 28 | K9374234028 | \$5.26 | Low | Not in Stock | CASING B AL38 VR2 PS HT-57 BLK |
| 29 | K9356563009 | \$1.44 | Not in Stock | Not in Stock | HANGER BRACKET ARUM24~36 VAB# METAL |
| 30 | K9603293017 | \$125.82 | Good | Not in Stock | MOTOR DC BRUSHLESS VR2 MFG-36CVN CCC UL |
| 31 | K9900826017 | \$1.41 | Not in Stock | Good | THERMISTOR ROOM VAB ED2F103AR-14C013 |
| <div>SUBMIT</div> | | | | | |

