

## UTZ-DUWBRA | UTZ-DUWBTA | UTZ-DUWBUA

Job Name: \_\_\_\_\_  
 Location: \_\_\_\_\_  
 Engineer: \_\_\_\_\_  
 Submitted to: \_\_\_\_\_  
 Submitted by: \_\_\_\_\_  
 Reference: \_\_\_\_\_

Date: \_\_\_\_\_  
 Approval: \_\_\_\_\_  
 Construction: \_\_\_\_\_  
 Unit #: \_\_\_\_\_  
 Drawing #: \_\_\_\_\_



### GENERAL INFO

Wind Baffles prevent stoppage of Outdoor air fan due to wind high winds hitting the fan. Please refer to Application Bulletin AH20201101A for the proper use of the wind baffles.

### GENERAL FEATURES

- 20GA solid steel construction
- Easy to install
- Paint matching Fujitsu Outdoor unit

### COMPATIBLE OUTDOOR UNITS

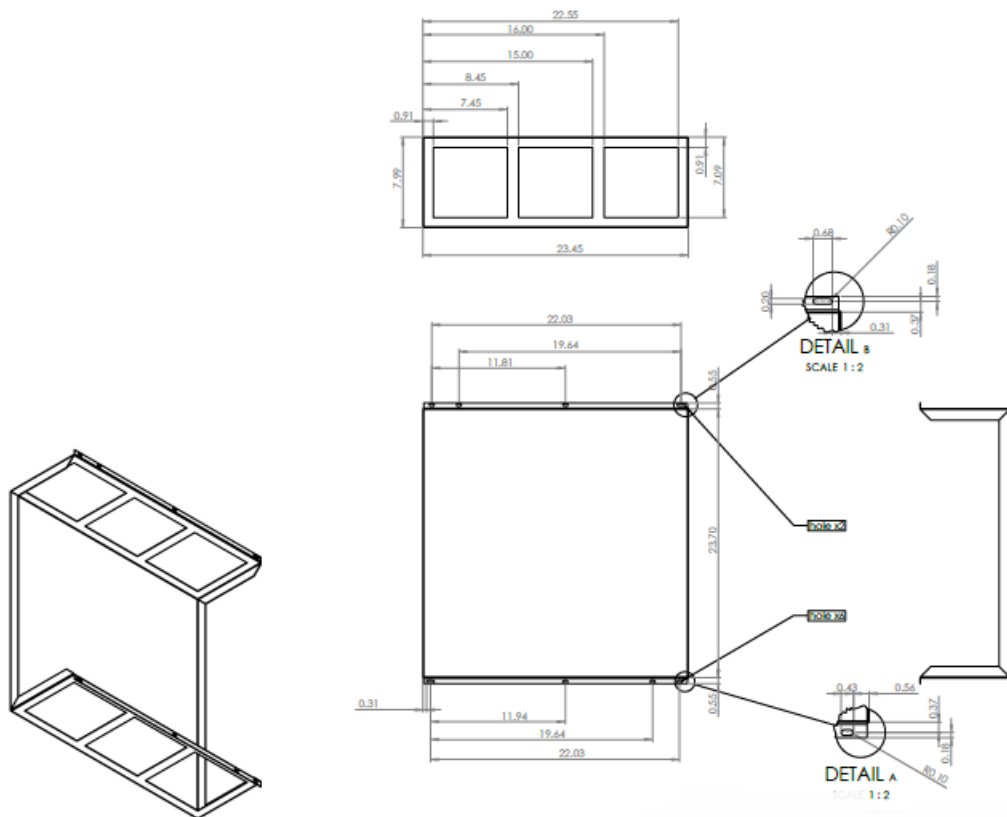
Models	Group	Wind baffles		
		UTZ-DUWBUA	UTZ-DUWBTA	UTZ-DUWBRA
AOU36RLAVS	U	1		
AOU48RLAVS		1		
AOU36RLAVS4		1		
AOU48RLAVS4		1		
AOU36RLAVM	T		1 *	
AOU48RLAVM			1 *	
AOU60RLAVM			1 *	
AOU36RLAVM4			1 *	
AOU48RLAVM4			1 *	
AOU60RLAVM4			1 *	
AOU72RLAVL	R			1
AOU96RLAVL				1
AOU120RLAVL				1

\* Please note one UTZ-DUWBTA contains 2 qty. of UTZ- DUWBUA to accommodate 2 fan chassis.

UTZ-DUWBRA | UTZ-DUWBTA | UTZ-DUWBUA

Dimensions | weight data

Technical Specifications		
Parameter	Unit	Value
Model Name	-	UTZ-DUWBUA   UTZ-DUWBTA
Color Number	-	SLSS 45352
Net Dimensions	(mm)	630.0 x 595.6 x 203.0
WxHxD	(Inch)	24 51/64 x 23 29/64 x 7 63/64
Net Weight	(kg)	3.63
	(lb)	8
Packing Dimensions	(mm)	762 x 254 x 762
WxHxD	(inch)	30 x 10 x 30
Gross Weight	(kg)	4.54
	(lb)	12



**UTZ-DUWBRA | UTZ-DUWBTA | UTZ-DUWBUA**

Dimensions | weight data

Technical Specifications			
Parameter	Unit	Value	
Model Name	-	UTZ-DUWBRA	
Color Number	-	SLSS 45352	
Net Dimensions WxHxD	(mm)	691.0 x 738.3 x 203.0	
	(Inch)	27 13/64x29 1/16x7 63/64	
Net Weight	(kg)	5	
	(lb)	11	
Packing Dimensions WxHxD	(mm)	762x254x762	
	(inch)	30x10x30	
Gross Weight	(kg)	6.80	
	(lb)	15	

**UTZ-DUWBRA**

