



2016

Waterworks Catalog

Commitment

Fernco is committed to giving the highest level of quality, Fernco quality, at the most competitive price. Our goal is to maintain standards of excellence in quality and service, while continuing to be the most innovative company in the industry.

Convenient Ordering, Fast Delivery

Fernco's phone ordering system ensures easy ordering and prompt delivery for our customers. When you call Fernco, you will be assisted by a trained professional who knows the industry and understands your individual needs. Your order will be quickly entered into our data processing system for accurate recording of specifications and costs.

Only Fernco offers you the industry's largest product line, highest fill rate and the most complete merchandising program. All of which is supported by over fifty years of design, manufacturing and distribution experience combined with an ongoing commitment to product innovation.

United States
(810) 503-9000
fernco.com

Canada
(519) 332-6711
fernco.ca

FLEXIBLE COUPLINGS

| | |
|----------------------------|---|
| Standard Series | 1 |
| 1000 StrongBack RC | 3 |
| 5000 StrongBack RC | 4 |
| Large Corrugated Series | 5 |
| Large Diameter Series | 5 |
| Corrugated Series | 6 |
| Western Series Center Stop | 6 |
| Eccentric Series | 6 |
| Ultra Rib Series | 7 |
| Stainless Steel Clamps | 7 |
| Torque Wrenches | 7 |
| Large Diameter Caps | 7 |
| Qwik Caps | 8 |

LATERAL CONNECTIONS

| | |
|----------------------------|------|
| QwikSeal | 9-10 |
| Tap Saddles & Pressure Kit | 11 |

SEALANTS

| | |
|------------------|----|
| Pow-R Patch | 12 |
| Pow-R Wrap | 12 |
| Pow-R Industrial | 12 |

INTERNAL SEALS

| | |
|--------------------------|----|
| Multi-Tite Gaskets | 13 |
| Concrete Manhole Adapter | 13 |
| Donuts | 14 |
| O-Rings | 14 |

WATER MANAGEMENT

| | |
|-------------------------------|----|
| StormDrain Plus | 15 |
| Downspout Connector | 16 |
| Universal Downspout Connector | 16 |

RESOURCES

| | |
|---|----|
| Coupling Sizing Charts | |
| - Clay to Clay | 17 |
| - Clay to Cast Iron (CI), Plastic, Copper, Steel or Lead | 18 |
| - Clay to Asbestos Cement Fibre (AC) or Ductile Iron (DI) | 19 |
| - Concrete to Concrete | 20 |
| - Concrete to Clay | 21 |
| - Concrete to CI, Plastic, Copper, Steel or Lead | 21 |
| - AC or DI to CI, Plastic, Copper, Steel or Lead | 22 |
| - AC or DI to AC or DI | 23 |
| - CI Plastic, Copper, Steel or Lead to CI, Plastic, Steel or Lead | 24 |
| - Concrete to DI | 25 |
| Waterworks Market Reps | 27 |
| Plumbing Market Reps | 29 |
| Acid Resistance Chart | 31 |



INDEX

A global company with a focus on the individual customer.

Established in 1964

In the 1950's, William Zopfi was looking for a reliable solution to fit his pipe connection needs for sewer lines in the Detroit, MI area. He developed a tar donut that would allow him to create more connections per day, increasing his efficiency in the field. In 1964, the Fernco Joint Sealer Company was formally established when the 'donut' became patented. When word spread of this invention, Zopfi, set up a small shop behind his plumbing business to begin producing the Donut. Thus, Fernco was set on it's course for the future.

When Darrel Cooper joined the team, he had a philosophy of working closely with wholesale distributors to provide products in a timely manner. This would prove to be a core value that was as important then as it is today.

In 1973 Dallas, Texas requested a bid for the first Fernco Coupling to fit a pipe without a bell housing. Cooper saw this product as an opportunity for vast growth and established couplings in the market. Fernco then moved to its current headquarters in Davison, Michigan, allowing the company to expand and expedite their manufacturing and shipping process. In 1978, Cooper was named President of the company and purchased Fernco Joint Sealer Company, forming a new company, Fernco, Inc.

Industry Leaders

Fernco has continued to grow into different markets, while developing innovative and reliable products. Fernco has expanded throughout North and South America and acquired Flexseal Couplings LTD, the leading manufacturer of flexible couplings in the European market. The Flexseal acquisition positioned Fernco as the leading manufacturer and distributor of flexible couplings in the world.

In 2015, Fernco proudly invested in a new 150,000 sq. ft. manufacturing and distribution center in Davison, MI, along with state-of-the-art electric injection machines. Located a mile from previous facility, the center will allow Fernco to focus on additional product development and continue delivering exceptional customer service for the next fifty years.

Fernco's continuous growth is not to become the biggest company, but the best company. With resources from around the world, Fernco is able to create products that will meet the needs of the individual and the industry. It all comes down to Fernco's focus on the individual customer to provide a product that can be trusted with confidence.



150,000 sq. ft. manufacturing and distribution facility



Global Manufacturing



United States



Canada



United Kingdom



Germany



Australia

Global Distribution



United States



Canada



European Union



Australia



New Zealand



Puerto Rico



Mexico



Brazil



For a coupling to perform like a Fernco,

IT MUST SAY FERNCO.

Manufactured of tough elastomeric polyvinyl chloride (PVC), Fernco couplings are strong, resilient and not affected by soil conditions. Due to the nature and physical properties of their material, they are also resistant to chemicals, ultra-violet rays, fungus growth and normal sewer gases. And they are leak-proof, rot-proof and seal against infiltration and exfiltration.

Because of their quality and ease of installation, Fernco flexible couplings have found approval among plumbers, contractors and municipalities across the globe. Fernco couplings are used for all types of in-house and sewer applications such as drain, waste, vent piping, house-to-main, cut-ins, conductors, roof-drains and more.

All couplings are clearly marked with part number, size, and the materials that the coupling will connect to. Fernco has fast lead times with no minimum order required. For special applications, our custom design service can supply couplings for individual customer requirements. Our Flexible Couplings are the industry standard.

Standard Flexible Couplings



Fernco's specially formulated PVC compound positively seals most sewer and drain connections.

Fernco makes the most complete line of couplings in the industry, from sizes 3/4" and larger. Custom large diameter couplings are available, along with shielded transitional couplings to ensure all pipes, underground and above-ground, can be connected with a Fernco coupling. Because Fernco couplings have earned a reputation for superior performance, you can have full confidence in their quality and reliability.

Tested designs backed by over five decades of proven experience

Available from 3/4" and larger

- Seals against infiltration and exfiltration
- Leak-proof, root-proof and resistant to many chemicals, ultra violet rays, fungus growth and normal sewer gas
- Conforms to ASTM D 5926, C 1173 and CSA B602
- Connects pipes of same or different materials and sizes
- Corrosion-resistant and rust-proof stainless steel clamps
- Made of elastomeric polyvinyl chloride (PVC)
- 4.3 PSI maximum test pressure
- 140°F maximum intermittent operating temperature
- 120°F maximum consistent operating temperature



Flexible Couplings

High Torque Clamps

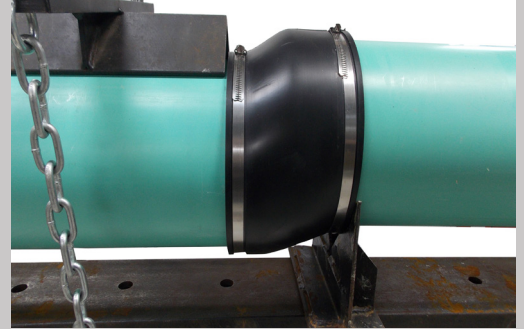
STANDARD on all 18" and larger couplings



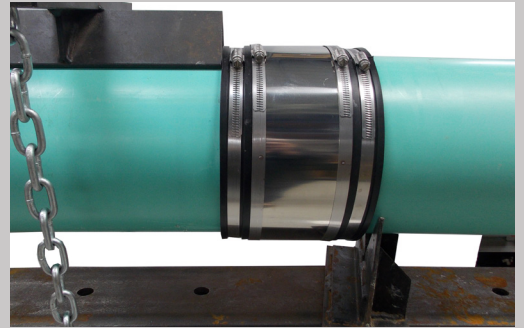
see sizes on pg. 17-24

STRONG BACK

1000 RC Series



Shear Resistance Test using an unshielded sewer coupling per ASTM C 1173 applied load 50 lbs per nominal inch of pipe diameter



Shear Resistance Test using a Fernco 1000 RC coupling per ASTM C 1173 applied load 50 lbs. per nominal inch of pipe diameter

Technical Data

Gasket

- Meets the material requirements of:
 - CSA B602
 - ASTM D 5926
 - ASTM C 1173
- Hardness, Shore "A", Inst. +5.....65
- Tensile Strength, Min. psi....1000
- Tear Strength, Min.....150 lbf/in
- Brittleness Temperature.....-40°F

1000 RC Series Clamps

- Clamp housing - 301 stainless steel
- Clamp Band - 301 stainless steel
- Clamp screw - 305 stainless steel
- Installation torque 60 lb/in
- High torque clamps installation torque 120 lb/in where applicable

NEW 6000 RC Series

- American Iron and Steel (AIS) Compliant

Shear Ring

- .012" Thick, 300 Series Stainless Steel
- Width manufactured according to coupling width (1.5", 2.13" or 4")
- Length manufactured according to coupling diameter
- Clamps spot welded in place

Coupling

- Manufactured to conform to the performance requirements of:



- 140°F maximum intermittent operating temperature
- 120°F maximum consistent operating temperature

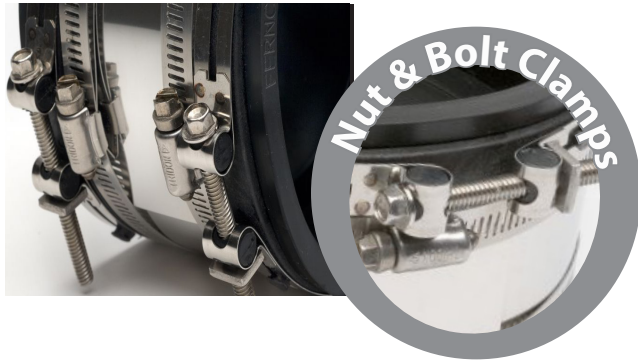


see sizes on pg. 17-24

Flexible Couplings

RC COUPLINGS

5000 RC Series



Technical Data

Gasket

- Meets the material requirements of:
 - CSA B602
 - ASTM D 5926
 - ASTM C 1173
- Hardness, Shore "A", Inst. +5.....65
- Tensile Strength, Min. psi....1000
- Tear Strength, Min.....150 lbf/in
- Brittleness Temperature.....-40°F

5000 RC Series Clamps

- Clamp Band - 316 stainless steel
- 6" and larger couplings incorporate two nut and bolt take-up points per band
- Installation torque 60 lb/in

Shear Ring

- .012" Thick, 300 Series Stainless Steel
- Width manufactured according to coupling width (1.5", 2.13" or 4")
- Length manufactured according to coupling diameter
- Clamps spot welded in place

Coupling

- Manufactured to conform to the performance requirements of:



- 140°F maximum intermittent operating temperature
- 120°F maximum consistent operating temperature

CUSTOM CONNECTIONS

Any size, any material.

see sizes on pg. 17-24

Designed to resist heavy earth loads and shear forces underground while providing improved pipe alignment

Flexible Couplings

HTRC Corrugated Pipe Couplings

Large diameter corrugated pipe couplings 10" to 60"

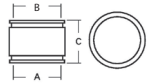
Technical Data

- **Shear Resistance:** .012" 300 series stainless steel sheer ring
- **High Torque Clamps:** 301 series stainless steel high torque clamps
 - 10" couplings are 6" wide with two clamp areas
 - 12" and larger couplings are 10" wide with 4 clamp areas.
- **Sealing Gasket:** The flexible PVC gasket has a smooth inside surface to provide ultimate sealing performance, making 360° contact over its entire length.



Greater sealing force on corrugated pipe

Additional sizes available upon request.



Corrugated Polyethylene to Plastic

| Part Number | A | | B | | C | |
|----------------|------|------|------|------|------|-----|
| | in. | mm | in. | mm | in. | mm |
| *1070-10-8HTRC | 11.6 | 295 | 8.4 | 213 | 6.0 | 152 |
| *1070-1010HTRC | 11.6 | 295 | 10.5 | 267 | 6.0 | 152 |
| *1070-1210HTRC | 14.4 | 366 | 10.5 | 267 | 10.0 | 254 |
| *1070-1212HTRC | 14.4 | 366 | 12.5 | 318 | 10.0 | 254 |
| *1070-1515HTRC | 17.7 | 450 | 15.3 | 389 | 10.0 | 254 |
| *1070-1818HTRC | 21.3 | 541 | 18.7 | 475 | 10.0 | 254 |
| *1070-2424HTRC | 28.1 | 714 | 24.8 | 630 | 10.0 | 254 |
| *1070-3030HTRC | 35.4 | 899 | 31.5 | 800 | 10.0 | 254 |
| *1070-3636HTRC | 41.6 | 1057 | 39.4 | 1001 | 10.0 | 254 |
| *1070-4242HTRC | 47.7 | 1212 | 44.5 | 1130 | 10.0 | 254 |
| *1070-4848HTRC | 54.1 | 1374 | 50.8 | 1290 | 10.0 | 254 |

Corrugated Polyethylene to Corrugated Polyethylene

| Part Number | A | | B | | C | |
|---------------|------|------|------|------|------|-----|
| | in. | mm | in. | mm | in. | mm |
| 1071-1010HTRC | 11.6 | 295 | 11.6 | 295 | 6.0 | 152 |
| 1071-1212HTRC | 14.4 | 366 | 14.4 | 366 | 10.0 | 254 |
| 1071-1515HTRC | 17.7 | 450 | 17.7 | 450 | 10.0 | 254 |
| 1071-1818HTRC | 21.3 | 541 | 21.3 | 541 | 10.0 | 254 |
| 1071-2424HTRC | 28.1 | 714 | 28.1 | 714 | 10.0 | 254 |
| 1071-3030HTRC | 35.4 | 899 | 35.4 | 899 | 10.0 | 254 |
| 1071-3636HTRC | 41.6 | 1057 | 41.6 | 1057 | 10.0 | 254 |
| 1071-4242HTRC | 47.7 | 1212 | 47.7 | 1212 | 10.0 | 254 |
| 1071-4848HTRC | 54.1 | 1374 | 54.1 | 1374 | 10.0 | 254 |
| 1071-5454HTRC | 61.0 | 1549 | 61.0 | 1549 | 10.0 | 254 |
| 1071-6060HTRC | 66.8 | 1697 | 66.8 | 1697 | 10.0 | 254 |

Flexible Couplings

Large Diameter Couplings

For non-standard or special size applications

Technical Data

- 10" wide
- 4 series 300 stainless steel high torque clamps with multiple take up points
- Up to 120 lb/in of torque for greater sealing pressure

*Where O.D. differences range from 1-1/4" - 12", a Fernco bushing system is available



The ideal coupling for repairs, alterations or rehabilitation of large diameter sewer pipe.

CUSTOM CONNECTIONS
Any size, any material.

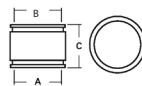
Expanded Range LDC Couplings

- Connect pipe materials with different O.D.'s up to 12" variance
- Interlocking bushing system
- Reduces customer cost by utilizing one coupling and bushing configuration
- Reduces multiple couplings and intermediate pipe



Corrugated Pipe Couplings

Connect ADS and Hancor corrugated polyethylene to plastic



Technical Data

- Available in 3", 4" 6" and 8" sizes
- Conforms to ASTM D5926
- Connects corrugated polyethylene drainage and irrigation systems to sewer, drain or DWV plastic pipe



| Part Number | A | | B | | C | |
|-------------|------|-----|------|-----|------|-----|
| | in. | mm | in. | mm | in. | mm |
| *1070-32 | 3.57 | 91 | 2.38 | 60 | 3.96 | 101 |
| 1070-33 | 3.57 | 91 | 3.44 | 87 | 3.96 | 101 |
| *1070-42 | 4.76 | 121 | 2.38 | 60 | 3.94 | 100 |
| *1070-43 | 4.76 | 121 | 3.38 | 86 | 3.94 | 100 |
| 1070-44 | 4.76 | 121 | 4.29 | 109 | 3.94 | 100 |
| *1070-63 | 6.83 | 173 | 3.38 | 86 | 5.91 | 150 |
| *1070-64 | 6.83 | 173 | 4.38 | 111 | 5.91 | 150 |
| *1070-65 | 6.83 | 173 | 5.50 | 140 | 5.91 | 150 |
| 1070-66 | 6.83 | 174 | 6.50 | 165 | 5.91 | 150 |
| *1070-84 | 9.76 | 248 | 4.38 | 111 | 5.70 | 145 |
| *1070-86 | 9.76 | 248 | 6.38 | 162 | 5.70 | 145 |
| 1070-88 | 9.76 | 248 | 8.42 | 214 | 5.70 | 145 |

Western Series Center Stop Couplings & Bushings

Technical Data

- Center stop coupling with bushing inserts
- Bushings available for 4", 6" and 8" transitions of clay, cast iron, plastic and AC:
 - Sch 40 PVC, ABS plastic and SDR-35 Plastic
 - Bead, bald and plain-end cast iron
 - Rough barrel and machined-end AC
 - Ductile iron
- 300 series stainless steel band clamps, 316 series available



Bushings

| Part Number | Size | Description |
|-------------|----------------|----------------------------------|
| 481-2.38 | 5.38" x 2.38" | Clay to PECl |
| 481-3.38 | 5.38" x 3.38" | Clay to PECl |
| 481-3.50 | 5.38" x 3.50" | Clay to Bead CI, PL or XHCl |
| 481-4.25 | 5.38" x 4.25" | Clay to SDR-35 or PVC |
| 481-4.38 | 5.38" x 4.39" | Clay to PECl or Bald CI (J) |
| 481-4.50 | 5.38" x 4.50" | Clay to ABS or Sch. 40 |
| 481-4.63 | 5.38" x 4.63" | Clay to Bead CI or MEAC (C) |
| 481-4.90 | 5.38" x 4.90" | Clay to RBAC or CI 150 DI (B) |
| 681-6.38 | 7.98" x 6.37" | Clay to PECl or PVC (J) |
| 681-6.63 | 7.98" x 6.62" | Clay to ABS, Bead CI or MEAC (C) |
| 881-8.38 | 10.18" x 8.42" | Clay to PECl or PVC (J) |
| 881-8.63 | 10.18" x 9.00" | Clay to ABS, Bead CI or MEAC |
| 881-9.00 | 10.18" x 9.00" | Clay to RBAC or CI 150 DI (B) |
| 885-8.38 | 9.00" x 8.42" | AC to PECl or PVC |
| 885-8.63 | 9.00" x 8.64" | Clay to ABS, Bead CI or MEAC |

Couplings

| Part Number | Size | Description |
|-------------|-----------------|----------------------|
| 1081-44 | 5.44" x 5.44" | Clay to Clay |
| 1081-66 | 8.00" x 8.00" | Clay to Clay |
| 1081-88 | 10.00" x 10.00" | Clay to Clay |
| 1085-88 | 9.00" x 9.00" | AC to AC |
| 1086-33 | 3.40" x 3.40" | Cl or PL to Cl or PL |
| 1086-44 | 4.56" x 4.56" | Cl or PL to Cl or PL |



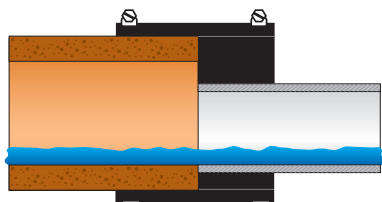
Flexible Couplings

Eccentric Bushings & Couplings

Maintain a continuous flow-line in critical grade conditions

Technical Data

- Available for all common sewer pipe
- Aligns the inside wall of the two pipes
- Provides an obstruction free flow
- Meets ASTM C 1173 and D 5926
- 300 series stainless steel clamps
- Maximum test pressure 4.3 PSI

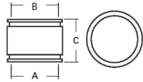


- **1002 EB**
Clay to Cast Iron or Plastic
- **1006 EB**
Concrete to Cast Iron or Plastic
- **1051 EB**
AC or Ductile Iron to Cast Iron or Plastic
- **1055 EB**
AC or Ductile Iron to AC or Ductile Iron
- **1056 EB**
Cast Iron, Plastic, Copper, Steel or Lead to Cast Iron, Plastic, Copper, Steel or Lead

see sizes on pg. 17-24

Ultra Rib Couplings

Effectively connect sewer pipe



ETI to SDR-35 Plastic

A B C

| Part Number | in. | mm | in. | mm | in. | mm |
|-------------|-------|-----|-------|-----|-------|------|
| 1072-1212 | 14.00 | 355 | 14.00 | 355 | 9.89 | 251 |
| 1072-1515 | 16.80 | 427 | 16.80 | 427 | 9.89 | 251 |
| 1072-1818 | 20.30 | 515 | 20.30 | 515 | 10.00 | 2540 |
| 1071-2121 | 23.75 | 603 | 23.75 | 603 | 10.00 | 2540 |
| 1072-2424 | 26.75 | 680 | 26.75 | 680 | 10.00 | 2540 |



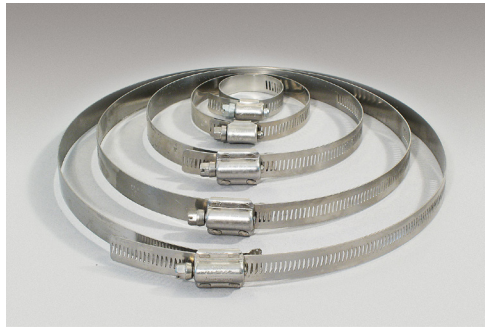
ETI to Asbestos Cement or Ductile Iron

A B C

| Part Number | in. | mm | in. | mm | in. | mm |
|-------------|-------|-----|-------|-----|-------|------|
| *1073-1212 | 14.00 | 355 | 12.25 | 311 | 9.89 | 251 |
| *1073-1515 | 16.80 | 427 | 15.30 | 388 | 9.89 | 251 |
| *1073-1818 | 20.30 | 515 | 18.75 | 476 | 10.32 | 262 |
| *1073-2121 | 23.75 | 603 | 21.60 | 548 | 12.53 | 318 |
| *1073-2424 | 26.00 | 660 | 24.80 | 630 | 10.00 | 2540 |

Stainless Steel Clamps

9/16" to 16"



Series 316 stainless and high torque clamps are available upon request

Interlocked housing and band design strengthens under tension to ensure a positive seal. Bands have additional slots to accommodate greater dimensional range.

Torque Wrenches

Metal construction for 5/16" hex head screws, preset to 60 in. lbs. torque



TW-100

Built-in reversing lever



TW-200

Finger grip reversing collar

Recommended for Fernco couplings and other banded Fernco products.

Custom Large Diameter Debris Caps

Custom fabricated from 14" and larger pipe O.D.

Technical Data

- Reusable or permanent debris caps for pipe ends
- Designed for direct burial on non-pressurized horizontal pipe lines
- Strong two-piece construction
 - CAP Face: Rigid durable FPVC
 - Cap Body: Flexible PVC
 - Clamps: All 300 series stainless steel with 60 lb/in installation torque
- Soil tight seal

NOTE: Not intended for use as a load bearing surface on vertically orientated pipe. Do not stand or step on cap surface if installed on vertically orientated pipe.

CUSTOM

Any size, any material.



Qwik Caps

Quick, reusable caps for pipe ends, testing & cleanouts



Technical Data

- Underground or above-ground applications
- Complies to ASTM D 5926
- 300 stainless steel clamps
- Maximum operating temperature: 140°F intermittent
- Maximum test pressure: 4.3 PSI
- Permanent seal
- Fast, easy solution



Nominal Qwik Caps

| Part Number | I.D. | Min. | Max. | Material |
|---------------|-------|-------|-------|--|
| QC-101 | 1.86 | 1.61 | 1.95 | 1 1/2" PL, CI, Copper or ST |
| QC-102 | 2.34 | 1.94 | 2.48 | 2" PL, CI, Copper or ST or 1 1/2" Durion |
| QC-103 | 3.48 | 3.09 | 3.63 | 3" PL, CI, Copper or ST |
| QC-104 | 4.47 | 3.96 | 3.63 | 4" PL, CI, Copper, ST or Triple Wall |
| QC-105 | 5.57 | 5.03 | 5.85 | 5" PL, CI, Copper or ST or 4" Clay or Concrete |
| QC-106 | 6.30 | 5.73 | 6.62 | 6" PL, CI, Copper, ST or SS or 5" EC, OB, AC or Concrete |
| QC-108 | 8.63 | 7.70 | 9.11 | 8" PL, CI, Copper, ST or SS or 6" WC |
| QC-10 (TC-10) | 10.47 | 9.88 | 11.00 | 10" PL, CI, Copper, ST or SS or 8" Concrete |
| QC-112 | 12.49 | 11.41 | 13.33 | 12" PL, CI, ST, Ductile or AC or 10" WC, EC or Concrete |

| Part Number | I.D. | Min. | Max. | Material |
|-------------|-------|-------|-------|---|
| QC-0.85 | 0.85 | 0.79 | 0.91 | 1/2" PL or ST or 3/4" Copper or SS |
| QC-1.07 | 1.07 | 1.00 | 1.12 | 3/4" PL or ST or 1" Copper or SS |
| QC-1.38 | 1.37 | 1.22 | 1.50 | 1" PL or ST or 1 1/4" Copper or SS |
| QC-1.68 | 1.68 | 1.37 | 1.87 | 1 1/4" PL or ST or 1 1/2" Copper or SS |
| QC-2.75 | 2.75 | 2.18 | 2.93 | 2" Durion |
| QC-3.75 | 3.76 | 3.29 | 4.00 | 3" Durion or 4" SS |
| QC-4.75 | 4.82 | 4.32 | 5.05 | 4" Durion, Ductile, OB or Corrugated or 5" SS |
| QC-7.00 | 6.96 | 6.44 | 7.25 | 5" WC or 6" Ductile, AC, OB or Corrugated |
| QC-9.00 | 9.01 | 8.59 | 9.34 | 8" Ductile, OB, AC or Corrugated |
| QC-9.75 | 9.75 | 9.29 | 10.00 | 8" WC or EC |
| QC-10.75 | 10.74 | 10.22 | 11.05 | 10" Ductile, AC or Corrugated |
| QC-14.00 | 14.00 | 13.23 | 14.30 | 12" Concrete or Clay or 14" PL |

Flexible Couplings

Qwik Caps offer a quick, easy way to cap pipe ends, cleanouts and test pipes. Made of flexible PVC, they are suitable for above-ground or underground applications on cast iron, steel, copper or plastic piping.

WC: West Coast Clay
 EC: Eastern Standard Clay
 OB: Orangeburg
 PL: Plastic

CI: Cast Iron
 AC: Asbestos Cement
 ST: Steel
 SS: Stainless Steel



Fernco QwikSeal



Corrugated



Concrete



Clay



SDR-35

| Part Number | Pipe Inlet | Host Pipe Size Application |
|-------------|------------|------------------------------|
| QS-4 | 4" SDR | 8" diameter and larger pipe |
| QS-4S40 | 4" SCH-40 | 8" diameter and larger pipe |
| QS-6 | 6" SDR-35 | 10" diameter and larger pipe |
| QS-6S40 | 6" SCH-40 | 10" diameter and larger pipe |
| QS-8 | 8" SDR-35 | 15" diameter and larger pipe |

NOTE Corrugated Applications

- QS-4 and QS-4S40: 8" to 24" pipe diameter
- QS-6 and QS-6S40: 10" to 24" pipe diameter
- QS-8: 15" to 24" pipe diameter

Fernco Hole Saws

| Part Number | Description |
|-------------|--------------------------------------|
| QS-5x4HS | 5" OD x 4" Deep Hole Saw with Arbor |
| QS-7x4HS | 7" OD x 4" Deep Hole Saw with Arbor |
| QS-9x4HS | 9" OD x 4" Deep Hole Saw with Arbor |
| QS-SAW5S | 5" OD x 4" Deep Hole Saw |
| QS-SAW7S | 7" OD x 4" Deep Hole Saw |
| QS-SAW9S | 9" OD x 4" Deep Hole Saw |
| QS-ARBOR-S | 3/8" x 6" Drill with 1/2" Arbor |
| QS-ADAPTER | 1 1/4" x 3/4" Coring Machine Adapter |

Fernco Coring Bits

| Part Number | Description |
|-------------|--|
| QS-5x14CB | 5" OD x 14" Length Abrasive Coring Bit |
| QS-7x14CB | 7" OD x 14" Length Abrasive Coring Bit |
| QS-9x14CB | 9" OD x 14" Length Abrasive Coring Bit |



Technical Data

- Meets ASTM C 923
- When tested in concrete manholes
 - Creates water-tight, compression seal up to 10 PSI
 - Withstands up to 7° of deflection
- Easy color identification - gray Sch 40 - green SDR-26 & 35
- Independent of host pipe size, type or material
- Reduced complexity, many solutions with one QwikSeal
- Less inventory and more turns

Connect service pipe to solid wall, profile, closed profile and corrugated pipe with QwikSeal

QwikSeal Installation



1. Core a perpendicular hole to the main line:
 - 5" hole for 4" pipe inlet
 - 7" hole for 6" pipe inlet
 - 9" hole for 8" pipe inlet



2. Use sand paper or a file, clean and remove any burrs from opening.



3. Remove band clamp from QwikSeal, fold and insert into opening. Unfold.



4. Pull up on QwikSeal until it stops against the inside of the pipe.



5. Measure the depth of the QwikSeal, from the pipe stop to the top edge.



6. Measure the depth of the fitting to be attached pipe stub. See alternative method below.



7. Add the dimensions of the QwikSeal and the fitting and cut a stub to that length.



8. Bevel the leading edge of the pipe stub for easier insertion into the QwikSeal.



9. Lubricate the QwikSeal and pipe stub.



10. Start the pipe stub into the QwikSeal by hand.



11. Using a hammer and block of wood, drive the pipe stub to the QwikSeal pipe stop.



12. Install the band clamp at 60 in-lbs. torque.



13. Install pipe fitting. Fitting should sit flush with the surface of the QwikSeal.



Fitting and QwikSeal should be flush

Alternative Methods to Stub and Fitting

Bell End Pipe: You may also use the bell end of a piece of SDR-35 or SCH-40 instead of the stub and fitting method. After measuring the depth of the QwikSeal in step 5, transfer this measurement to the bell end of your inlet pipe, measuring from the bell. (Figure A) Proceed with steps 8 - 12.

Street Fittings: Street fittings may also be used with QwikSeal. (Figure B)



Tap Saddles & Pressure Kit

Tap Saddle Technical Data

- Conforms to ASTM D 5926
- Manufactured from a specially formulated high durometer PVC
- Includes special 300 series stainless steel 'slip-lock' clamps for a fast and simple installation on any type of pipe from 6"-15"*
- A larger apron with locating ring fits 5" or 7" standard shell cutters
- Large band grooves
- Ensures a **soil-tight seal**
- Available for most 4" or 6" plastic or cast iron drain pipe inlets in Tee or Wye configurations
- 4" saddle fits 6" and larger host pipe
- 6" saddle fits 8" and larger host pipe



| Part Number | Description |
|-------------|--|
| TST-4 | 4" CI or PL Inlet - Tee Tap Saddle |
| TST-6 | 6" CI or PL Inlet - Tee Tap Saddle |
| TSW-4 | 4" CI or PL Inlet - Wye Tap Saddle |
| TSW-6 | 6" CI or PL Inlet - Wye Tap Saddle |
| *312-300 | Extension Clamps larger than 15" sewer mains |

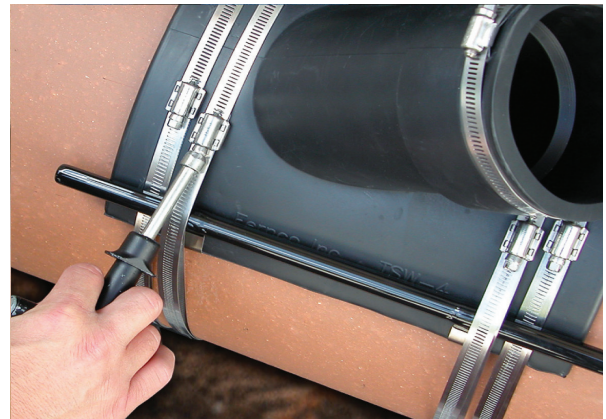
TSPK Technical Data

- Bentonite tape provides a **water tight seal**
- Pressure tested to 10 PSI
- Coated steel reinforcing bars apply an even sealing pressure
- Includes two special 300 series stainless steel 'slip-lock' clamps for a fast and simple installation



| Part Number | Description |
|-------------|--|
| TSPK-46 | Pressure kit for Fernco Flexible Tap Saddles - Fits models: TST-4, TST-6, TSW-4, TSW-6 |

Flexible Tap Saddles provide a soil-tight seal. Use Fernco Tap Saddle Pressure Kit (TSPK-46) for a water-tight connection up to 10 PSI.





Pow-R Patch is a complete repair kit that includes a pre-coated fiberglass cloth in a self-contained mixing pouch and a pair of protective gloves. Pow-R Patch is simple, fast and delivers long-term solutions.

Technical Data

- Holds up to 100 PSI
- Heat resistant to 425°F

Part Number Description

| | |
|--------|------------------------------------|
| FP-P46 | 4" x 6" fiberglass and epoxy patch |
|--------|------------------------------------|

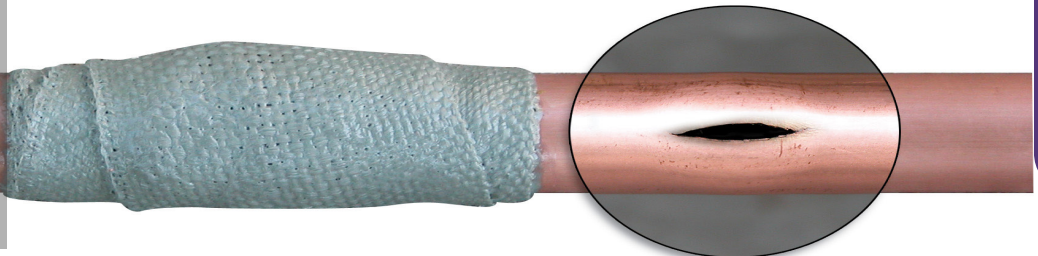


Pow-R Wrap is a water activated fiberglass wrap that permanently repairs wet or dry pipe and hose. Pow-R Wrap is a self-contained kit including everything you need to repair a magnitude of applications.

Technical Data

- Water activated
- Fiberglass wrap
- Heat resistant to 425°F
- Conforms to standard water main pressure test
- Cures in 30-60 mins.

| Part Number | Description | Pipe Diameter |
|-------------|----------------|---------------|
| FPW248CS | 2" x 48" wrap | Up to 1" |
| FPW3132CS | 3" x 132" wrap | 1-1/4" to 3" |
| FPW4252CS | 4" x 252" | 3" to 6" |



Sealants



Pow-R Wrap Industrial with Pow-R Belt is a permanent solution to structurally strengthen large diameter pipes from 8"-50". Eliminate pipe replacement with hands-free cure time and a smooth, professional finish.

Technical Data

- Heat resistant to 425°F
- Conforms to standard water main pressure test
- Cures in 60-90 mins. at 55°-75°F
- Safe for drinking water systems
- Repairs up to 1/4" W x 4" L
- Impervious to water, oil, and most chemicals, solvents and acids when cured



| FPW8540S-1 | 1 KIT 8" X 540" Pow-R Wrap | | | | |
|--------------------------------|----------------------------|---------|---------|---------|---------|
| Pipe Outside Diameter | 8"-18" | 20"-24" | 26"-34" | 36"-42" | 44"-50" |
| Number of Kits REQUIRED | 1 KITS | 2 KITS | 3 KITS | 4 KITS | 5 KITS |

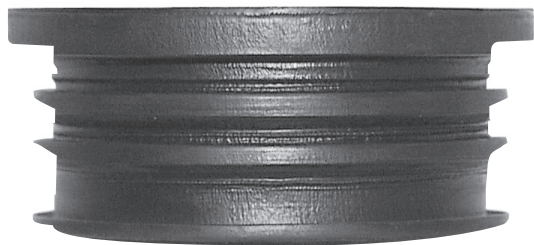
Multi-Tite Pipe Gaskets

Pipe gasket for service weight cast iron pipe

Technical Data

- Meets ASTM C564
- Multi rings on the outside create an easy installation
- Seals sewer pipe joints and connections such as sockets, hubs, bells and spigots

| Part Number | Description |
|-------------|------------------------------|
| SVG-2 | 2" service weight cast iron |
| SVG-3 | 3" service weight cast iron |
| SVG-4 | 4" service weight cast iron |
| SVG-5 | 5" service weight cast iron |
| SVG-6 | 6" service weight cast iron |
| SVG-8 | 8" service weight cast iron |
| SVG-10 | 10" service weight cast iron |
| SVG-12 | 12" service weight cast iron |
| SVG-15 | 15" service weight cast iron |



Concrete Manhole Adapters

Eliminate leaks around pipes entering manhole walls

CMA's and LDCMA's are corrosion proof and unaffected by acid or alkali, however may be subjected to various conditions that are beyond the manufacturer's control. Discretion must be used in its application and installation. CMA's are designed for cast iron and plastic connections and the LDCMA's are custom fabricated to size.

| Part Number | Description |
|-------------|---------------|
| 4 CMA | 4" I.D. Pipe |
| 6 CMA | 6" I.D. Pipe |
| 8 CMA | 8" I.D. Pipe |
| 10 CMA | 10" I.D. Pipe |
| 12 CMA | 12" I.D. Pipe |



For custom sizes, order by specifying the pipe O.D. which is to receive the adapter. Minimum size: 8.5 inches O.D.

Due to the factors that can influence the effectiveness as a seal, Fernco does not warrant this product as a positive seal.

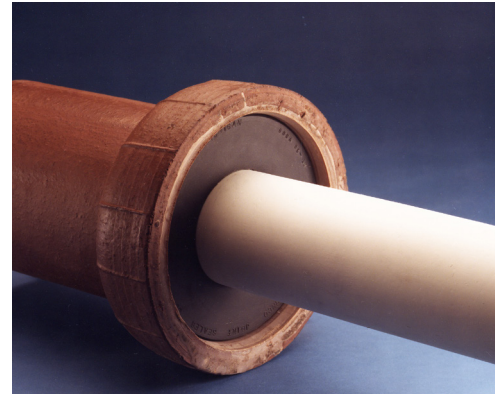
Fernco Donuts

Sewer pipe compression joint seal

Fernco Donuts are flexible PVC donut-shaped rings for the compression sealing of sewer pipe joints and DWV connections such as sockets, hubs, bells and spigots.



Fernco Donuts are available in hundreds of sizes and configurations to use with most brands and types of piping material.



Give us a call.
Our sales coordinators are trained to assist you in making the right part selection.

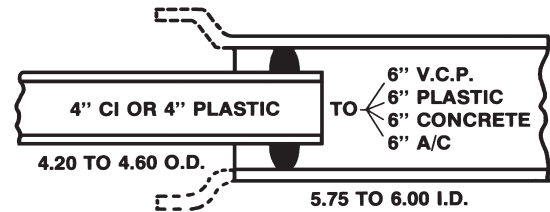
O-Rings

Connects 4" house pipe to 6" sewer pipe

O-rings provide a quick, simple solution to create secure connections between most 4" house pipe and 6" sewer pipe.

Technical Data

- Meets ASTM C 443 and C 425
- Connects CI or plastic house pipe to clay, plastic, concrete or A/C sewer pipe



Installs quickly and easily.
For 4.20" - 4.60" O.D. house pipe
Fits 5.75" - 6.00" I.D. sewer pipe

| Part Number | Description |
|-------------|-----------------------------|
| BR-64 | Rolling style rubber O-Ring |



Ultimate Drainage Solution

StormDrain Plus ensures a long-lasting, permanent solution to the collection and dispersal of standing surface water.

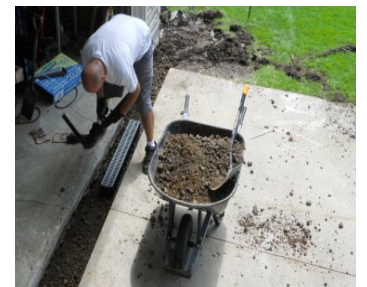
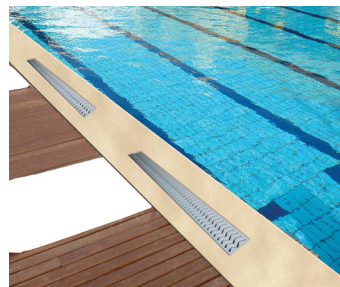


Technical Data

- Designed to withstand automotive weight for Class B (loads of 61-175 psi), medium-duty pneumatic tire traffic, autos and light trucks at speeds less than 20 mph.
- All products are "UV" inhibited
- Grates are ADA and heel guard compliant
- Grates have a non-slip textured surface
- Clips or screws are not required to assemble
- Concave grates trap and transfer water

| Part Number | Description |
|-------------|---|
| FSDP-CHGG | 39.5" grey Channel with grate |
| FSDP-GP3G | Three pieces of grey Channel with grate, one End Cap and one End Outlet |
| FSDP-QUAD | Four-way connector |
| FSDP-EC | End Cap |
| FSDP-EO | End Outlet |

| Replacement Part Number | Description |
|-------------------------|-------------------|
| FSDP-CH | Grey Channel ONLY |
| FSDP-GG | Grey grate ONLY |



STRONG & EASY

Ideal for driveways, patios, swimming pools, sports courts, gardens and more!

Downspout Connectors

Seal out debris by connecting downspouts

Downspout Connectors stretch easily over most common downspouts to seal out debris. Ideal for aluminum, steel or plastic downspouts and cast iron, spiral, corrugated or plastic drain pipe.

| Part Number | Drain Pipe | Downspout |
|-------------|------------|-------------------------------|
| DSC-43 | 4" | 3" x 2" rectangular, 3" round |
| DSC-33 | 3" | round or 2-1/2" square |
| DSC-534 | 4" | 5" x 3" rectangular |

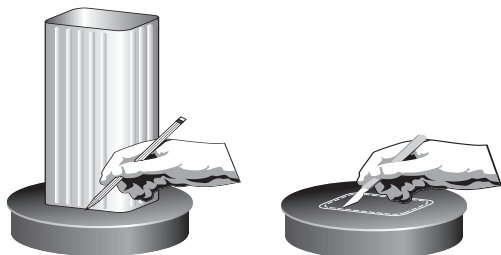


Universal Downspout Connectors

For the connection of standard and non-standard downspouts

The unique design of Ferco's Universal Downspout Connector allows for the connection of standard and non-standard downspouts to 6" sewer pipe and offset installations.

| Part Number | Description |
|-------------|---|
| UDSC-6C | 6" Cap for DWV pipe exposed above ground, fitting the O.D. of PVC and CI and a 6" or less downspout |
| UDSC-6P | 6" Plug for DWV pipe cut off at grade level, fitting any 6" I.D. sewer pipe and a 5.75" or less downspout |



Trace-and-cut installation to fit specific downspouts

Technical Data

- Commercial and residential applications
- Will not shrink or crack
- Rot-proof
- Allows offset installation
- Simple trace-and-cut installation



UDSC-6C



UDSC-6P

1001 Series Couplings

Clay to Clay

* Insert bushing included Red high torque clamps included new

| NOMINAL PIPE DIAMETER | STANDARD | STRONG BACK 1000 RC SERIES | STRONG BACK 5000 RC SERIES | ECCENTRIC |
|--------------------------------|-------------------------------------|---------------------------------------|---------------------------------------|-------------------------------------|
| 4" x 4" (100 mm x 100 mm) | 5.29 x 5.29 1001-44 | 5.29 x 5.29 1001-44RC | 5.29 x 5.29 5001-44RC | |
| 4" x 4" WC (100 mm x 100 mm) | 5.51 x 5.51 1001-44WC | 5.51 x 5.51 1001-44WCRC | 5.51 x 5.51 5001-44WC | |
| 5" x 4" (125 mm x 100 mm) | 6.05 x 5.54 1001-54 | 6.05 x 5.54 1001-54RC | 6.05 x 5.54 5001-54RC | |
| 5" x 5" (125 mm x 125 mm) | 6.48 x 6.48 1001-55 | 6.48 x 6.48 1001-55RC | 6.48 x 6.48 5001-55RC | |
| 6" x 4" (150 mm x 100 mm) | 7.39 x 5.63 1001-64 | 7.39 x 5.63 1001-64RC | 7.39 x 5.63 5001-64RC | 7.39 x 5.63 1001-64EB |
| 6" x 4" WC (150 mm x 100 mm) | 7.39 x 5.63 1001-64WC | 7.39 x 5.63 1001-64WCRC | 7.39 x 5.63 5001-64WCRC | 7.39 x 5.63 1001-64WCEB |
| 6" x 5" (150 mm x 125 mm) | 7.35 x 6.61 1001-65 | 7.35 x 6.61 1001-65RC | 7.35 x 6.61 5001-65RC | 7.35 x 6.61 1001-65EB |
| 6" x 6" (150 mm x 150 mm) | 7.50 x 7.50 1001-66 | 7.50 x 7.50 1001-66RC | 7.50 x 7.50 5001-66RC | |
| 6" x 6" WC (150 mm x 150 mm) | 8.01 x 8.01 1001-66WC | 8.01 x 8.01 1001-66WCRC | 8.01 x 8.01 5001-66WCRC | |
| 8" x 4" (200 mm x 100 mm) | 9.50 x 5.13 1001-84 | 9.50 x 5.13 1001-84RC | 9.50 x 5.13 5001-84RC | 9.50 x 5.13 1001-84EB |
| 8" x 6" (200 mm x 150 mm) | 9.50 x 7.13 1001-86 | 9.50 x 7.13 1001-86RC | 9.50 x 7.13 5001-86RC | 9.50 x 7.13 1001-86EB |
| 8" x 6" WC (200 mm x 150 mm) | 9.96 x 7.8 1001-86WC | 9.96 x 7.8 1001-86WCRC | 9.96 x 7.8 5001-86WCRC | 9.96 x 7.8 1001-86WCEB |
| 8" x 8" (200 mm x 200 mm) | 9.65 x 9.65 1001-88 | 9.65 x 9.65 1001-88RC | 9.65 x 9.65 5001-88RC | |
| 8" x 8" WC (200 mm x 200 mm) | 9.96 x 9.96 1001-88WC | 9.96 x 9.96 1001-88WCRC | 9.96 x 9.96 5001-88WCRC | |
| 10" x 8" (250 mm x 200 mm) | 12.5 x 9.65 1001-10-8 | 12.5 x 9.65 1001-10-8RC | 12.5 x 9.65 5001-10-8RC | 12.5 x 9.65 1001-10-8EB |
| 10" x 10" (250 mm x 250 mm) | 12.40 x 12.40 1001-1010 | 12.40 x 12.40 1001-1010RC | 12.40 x 12.40 5001-1010RC | |
| 10" x 10" WC (250 mm x 250 mm) | 12.40 x 12.40 1001-1010WC | 12.40 x 12.40 1001-1010WCRC | 12.40 x 12.40 5001-1010WCRC | |
| 12" x 10" (300 mm x 250 mm) | 14.50 x 12.50 1001-1210 | 14.50 x 12.50 1001-1210RC | 14.50 x 12.50 5001-1210RC | 14.50 x 12.50 1001-1210EB |
| 12" x 12" (300 mm x 300 mm) | 14.51 x 14.51 1001-1212 | 14.51 x 14.51 1001-1212RC | 14.51 x 14.51 5001-1212RC | |
| 12" x 12" WC (300 mm x 300 mm) | 15.25 x 15.25 1001-1212WC | 15.25 x 15.25 1001-1212WCRC | 15.25 x 15.25 5001-1212WCRC | |
| 15" x 10" (375 mm x 250 mm) | 18.14 x 12.60 1001-1510 | 18.14 x 12.60 1001-1510RC | 18.14 x 12.60 5001-1510RC | 18.14 x 12.60 1001-1510EB |
| 15" x 12" (375 mm x 300 mm) | 18.14 x 14.38 1001-1512 | 18.14 x 14.38 1001-1512RC | 18.14 x 14.38 5001-1512RC | 18.14 x 14.38 1001-1512EB |
| 15" x 15" (375 mm x 375 mm) | 18.14 x 18.14 1001-1515 | 18.14 x 18.4 1001-1515RC | 18.14 x 18.4 5001-1515RC | |
| 18" x 18" (450 mm x 450 mm) | 21.9 x 21.9 1001-1818 | 21.9 x 21.9 1001-1818RC | 21.9 x 21.9 5001-1818RC | |
| 21" x 21" (525 mm x 525 mm) | 25.40 x 25.40 1001-2121 | 25.40 x 25.40 1001-2121RC | 25.40 x 25.40 5001-2121RC | |
| 24" x 24" (600 mm x 600 mm) | 28.9 x 28.90 1001-2424 | 28.90 x 28.90 1001-2424RC | 28.90 x 28.90 5001-2424RC | |
| 27" x 27" (700 mm x 700 mm) | 32.4 x 32.4 1001-2727 | 32.4 x 32.4 1001-2727RC | 32.4 x 32.4 5001-2727RC | |

1002 Series Couplings

Clay to CI, Plastic, Copper, Steel or Lead

* Insert bushing included

Red high torque clamps included

new

| NOMINAL PIPE DIAMETER | STANDARD | STRONG BACK 1000 RC SERIES | STRONG BACK 5000 RC SERIES | ECCENTRIC |
|--------------------------------|-------------------------------------|--|--|-------------------------------------|
| 4" x 4" (100 mm x 100 mm) | 5.14 x 4.52 1002-44 | 5.36 x 4.56 1002-44RC | 5.36 x 4.56 5002-44RC | 5.29 x 4.38 1002-44EB |
| 4" x 4" WC (100 mm x 100 mm) | 5.40 x 4.56 1002-44WC | 5.44 x 4.55 1002-44WCRC | 5.44 x 4.55 5002-44WCRC | |
| 4" x 4" SDR (100 mm x 100 mm) | | | 5.29 x 4.38 5002-44SDRRC* | |
| 5" x 4" (125 mm x 100 mm) | 6.05 x 4.38 1002-54* | 6.60 x 4.38 1002-54RC* | | 6.60 x 4.38 1002-54EB |
| 5" x 5" (125 mm x 125 mm) | 6.05 x 5.50 1002-55 | 6.60 x 5.50 1002-55RC | 6.60 x 5.50 5002-55RC | 6.60 x 5.50 1002-55EB |
| 6" x 4" (150 mm x 100 mm) | 7.34 x 4.50 1002-64 | 7.50 x 4.50 1002-64RC | 7.50 x 4.50 5002-64RC* | 7.50 x 4.50 1002-64EC |
| 6" x 4" SDR (150 x 100 mm) | | 7.50 x 4.38 1002-64SDRRC* | 7.50 x 4.38 5002-64SDRRC* | |
| 6" x 4" WC (150 mm x 100 mm) | 8.00 x 4.50 1002-64WC* | 8.00 x 4.50 1002-64WCRC* | 8.00 x 4.50 5002-64WCRC* | 8.00 x 4.50 1002-64WCEB |
| 6" x 5" (150 mm x 125 mm) | 7.39 x 5.63 1002-65 | 7.50 x 5.62 1002-65RC* | | 7.50 x 5.62 1002-65EB* |
| 6" x 6" (150 mm x 150 mm) | 7.35 x 6.61 1002-66 | 7.50 x 6.56 1002-66RC* | 7.50 x 6.56 5002-66RC* | 7.50 x 6.38 1002-66EB |
| 6" x 6" SDR (150 mm x 150 mm) | | 7.50 x 6.38 1002-66SDRRC* | 7.50 x 6.38 5002-66SDRRC* | |
| 6" x 6" WC (150 mm x 150 mm) | 8.00 x 6.66 1002-66WC | 8.04 x 6.38 1002-66WCRC* | 8.04 x 6.38 5002-66WCRC* | |
| 8" x 4" (200 mm x 100 mm) | 9.33 x 4.38 1002-84* | 9.65 x 4.50 1002-84RC* | | 9.65 x 4.38 1002-84EB |
| 8" x 6" (200 mm x 150 mm) | 9.33 x 6.20 1002-86 | 9.65 x 6.63 1002-86RC* | 9.65 x 6.63 5002-86RC* | 9.65 x 6.38 1002-86EB |
| 8" x 6" WC (200 mm x 150 mm) | 10.00 x 6.38 1002-86WC* | 9.96 x 6.38 1002-86WCRC* | | |
| 8" x 8" (200 mm x 200 mm) | 9.63 x 8.64 1002-88 | 9.76 x 8.57 1002-88RC | 9.76 x 8.57 5002-88RC | 9.65 x 8.38 1002-88EB |
| 8" x 8" SDR (200 mm x 200 mm) | | | 9.75 x 8.38 5002-88SDRRC* | |
| 8" x 8" WC (200 mm x 200 mm) | 10.00 x 8.66 1002-88WC | 10.00 x 8.66 1002-88WCRC | 10.00 x 8.66 5002-88WCRC | |
| 10" x 8" (250 mm x 200 mm) | 12.50 x 8.50 1002-10-8* | 12.40 x 8.50 1002-10-8RC* | | 12.40 x 8.50 1002-10-8EB |
| 10" x 10" (250 mm x 250 mm) | 12.50 x 10.50 1002-1010 | 12.40 x 10.75 1002-1010RC* | 12.40 x 10.75 5002-1010RC* | 12.40 x 10.60 1002-1010EB |
| 10" x 10" WC (250 mm x 250 mm) | 12.60 x 10.60 1002-1010WC | 12.40 x 10.75 1002-1010WCRC* | 12.40 x 10.75 5002-1010WCRC* | |
| 12" x 10" (300 mm x 250 mm) | 14.50 x 10.75 1002-1210 | 14.51 x 10.60 1002-1210RC | | 14.51 x 10.60 1002-1210EB |
| 12" x 12" (300 mm x 300 mm) | 14.50 x 12.50 1002-1212 | 14.51 x 12.60 1002-1212RC* | 14.51 x 12.60 5002-1212RC* | 14.51 x 12.60 1002-1212EB |
| 12" x 12" WC (300 mm x 300 mm) | 16.29 x 12.39 1002-1212WC | 15.25 x 12.60 1002-1212WCRC* | | |
| 15" x 10" (375 mm 250 mm) | 18.14 x 10.60 1002-1510* | 18.14 x 10.60 1002-1510RC* | | |
| 15" x 12" (375 mm x 250 mm) | 18.14 x 12.60 1002-1512* | 18.14 x 12.60 1002-1512RC* | | 18.14 x 12.60 1002-1512EB |
| 15" x 15" (375 mm x 375 mm) | 18.14 x 15.60 1002-1515 | 18.14 x 15.40 1002-1515RC | 18.14 x 15.40 5002-1515RC* | 18.14 x 15.40 1002-1515EB |

1002 Series Couplings

Clay to CI, Plastic, Copper, Steel or Lead

* Insert bushing included

Red high torque clamps included

 new

| | | | |
|-----------------------------|-----------------------------------|-------------------------------------|-------------------------------------|
| 18" x 18" (450 mm x 450 mm) | 21.90 x 18.88 1002-1818 | 21.90 x 19.00 1002-1818RC | 21.90 x 19.00 5002-1818RC |
| 21" x 21" (525 mm x 525 mm) | 24.50 x 22.30 1002-2121 | 25.46 x 22.30 1002-2121RC | |
| 24" x 24" (600 mm x 600 mm) | 28.97 x 25.00 1002-2424 | 28.97 x 25.00 1002-2424RC | |
| 27" x 27" (700 mm x 700 mm) | 32.40 x 10.14 1002-2727 | | |

1003 Series Couplings

Clay to AC or DI

| NOMINAL PIPE DIAMETER | STANDARD | STRONG BACK 1000 RC SERIES | STRONG BACK 5000 RC SERIES | ECCENTRIC |
|--------------------------------|--------------------------------------|--|--------------------------------------|------------------------------------|
| 4" x 4" (100 mm x 100 mm) | 5.39 x 4.89 1003-44 | 5.41 x 6.04 1003-44RC | 5.41 x 6.04 5003-44RC | |
| 4" x 4" WC (100 mm x 100 mm) | 5.29 x 5.00 1003-44WC | 5.29 x 6.00 1003-44WCRC* | | |
| 4" x 6" (100 mm x 150 mm) | 5.17 x 6.81 1003-46 | 5.17 x 7.12 1003-46RC* | | |
| 5" x 4" (125 mm x 100 mm) | 6.05 x 5.00 1003-54* | | | |
| 5" x 5" (125 mm x 100 mm) | 6.00 x 5.86 1003-55 | | | |
| 6" x 4" (150 mm x 100 mm) | 7.30 x 4.95 1003-64 | 7.50 x 5.00 1003-64RC* | | 7.50 x 5.00 1003-64EB |
| 6" x 4" WC (150 mm x 100 mm) | 8.01 x 5.00 1003-64WC* | | | |
| 6" x 5" (150 mm x 125 mm) | 7.35 x 5.90 1003-65* | | | |
| 6" x 6" (150 mm x 150 mm) | 7.31 x 6.99 1003-66 | 7.25 x 6.84 1003-66RC* | 7.25 x 6.84 5003-66RC | |
| 6" x 6" WC (150 mm x 150 mm) | 8.01 x 6.80 1003-66WC | 8.00 x 6.90 1003-66WCRC | 8.00 x 6.90 5003-66WCRC | |
| 8" x 4" (200 mm x 100 mm) | 8.52 x 5.00 1003-84* | | | |
| 8" x 6" (200 mm x 150 mm) | 9.63 x 7.20 1003-86* | | | |
| 8" x 6" WC (200 mm x 150 mm) | 10.00 x 7.20 1003-86WC* | 9.96 x 7.20 1003-86WCRC* | | |
| 8" x 8" (200 mm x 200 mm) | 9.50 x 9.00 1003-88 | 9.75 x 9.06 1003-88RC | 9.75 x 9.06 5003-88RC | |
| 8" x 8" WC (200 mm x 200 mm) | 9.96 x 9.05 1003-88WC* | 10.03 x 10.77 1003-88WCRC* | | |
| 10" x 8" (250 mm x 200 mm) | 12.50 x 9.05 1003-10-8* | | | 12.40 x 9.05 1003-10-8EB |
| 10" x 10" (250 mm x 250 mm) | 12.40 x 11.12 1003-1010* | 12.40 x 11.02 1003-1010RC* | 12.40 x 11.02 5003-1010RC* | |
| 10" x 10" WC (250 mm x 250 mm) | 12.40 x 11.12 1003-1010WC* | 12.40 x 11.12 1003-1010WCRC* | | |
| 12" x 10" (300 mm x 250 mm) | 14.50 x 11.12 1003-1210* | | | |
| 12" x 12" (300 mm x 300 mm) | 15.00 x 13.29 1003-1212 | 14.51 x 13.20 1003-1212RC* | 14.51 x 13.20 5003-1212RC* | |

Resources

1003 Series Couplings

Clay to AC or DI

* Insert bushing included **Red** high torque clamps included new

| | | | |
|---------------------------------------|--------------------------------------|--------------------------------------|-------------------------------------|
| 12" x 12" WC (300 mm x 300 mm) | 15.25 x 13.20 1003-1212WC* | 15.25 x 13.20 1003-1212WC* | |
| 15" x 10" (375 mm x 250 mm) | 18.14 x 11.12 1003-1510* | | 18.14 x 11.12 1003-1510EB |
| 15" x 12" (375 mm x 300 mm) | 18.14 x 13.20 1003-1512* | 18.14 x 13.20 1003-1512RC* | 18.14 x 13.20 1003-1512EB |
| 15" x 15" (375 mm x 375 mm) | 18.14 x 16.50 1003-1515 | 18.14 x 16.50 1003-1515RC | |
| 15" x 16" (375 mm x 410 mm) | 18.10 x 17.80 1003-1516 | 18.10 x 17.80 1003-1516RC | 18.10 x 18.10 5003-1516RC |
| 18" x 18" (450 mm x 450 mm) | 21.60 x 19.50 1003-1818 | 21.90 x 19.50 1003-1818RC | |
| 24" x 24" (600 mm x 600 mm) | 28.90 x 25.80 1003-2424 | 28.90 x 25.80 1003-2424RC | |

1004 Series Couplings

Concrete to Concrete

| NOMINAL PIPE DIAMETER | STANDARD | STRONG BACK 1000 RC SERIES | STRONG BACK 5000 RC SERIES | ECCENTRIC |
|---------------------------------------|-------------------------------------|---------------------------------------|---------------------------------------|-------------------------------------|
| 4" x 4" (100 mm x 100 mm) | 5.51 x 5.51 1004-44 | 5.51 x 5.51 1004-44RC | 5.51 x 5.51 5004-44RC | |
| 6" x 4" (150 mm x 100 mm) | 7.67 x 5.62 1004-64* | | | |
| 6" x 6" (150 mm x 150 mm) | 7.58 x 7.58 1004-66 | 7.58 x 7.58 1004-66RC | 7.58 x 7.58 5004-66RC | |
| 8" x 6" (200 mm x 150 mm) | 10.25 x 7.80 1004-86* | | | |
| 8" x 8" (200 mm x 200 mm) | 10.38 x 10.38 1004-88 | 10.38 x 10.38 1004-88RC | 10.38 x 10.38 5004-88RC | |
| 10" x 8" (250 mm x 200 mm) | 12.50 x 10.65 1004-10-8 | | | |
| 10" x 10" (250 mm x 250 mm) | 12.40 x 12.40 1004-1010 | 12.40 x 12.40 1004-1010RC | 12.40 x 12.40 5004-1010RC | |
| 10" x 10" LC (250 mm x 250 mm) | 14.00 x 14.00 1004-1010LC | | | |
| 12" x 10" (300 mm x 250 mm) | 15.38 x 12.60 1004-1210* | | | 15.38 x 12.60 1004-1210EB |
| 12" x 12" (300 mm x 300 mm) | 15.38 x 15.38 1004-1212 | 15.25 x 15.25 1004-1212RC | 15.25 x 15.25 5004-1212RC | |
| 12" x 12" LC (300 mm x 300 mm) | 16.10 x 16.10 1004-1212LC | 16.10 x 16.10 1004-1212LCRC | 16.10 x 16.10 5004-1212LCRC | |
| 15" x 15" (375 mm x 375 mm) | 19.70 x 19.70 1004-1515 | 19.74 x 19.74 1004-1515RC | | |
| 18" x 18" (450 mm x 450 mm) | 22.50 x 22.50 1004-1818 | 22.50 x 22.50 1004-1818RC | | |
| 21" x 21" (525 mm x 525 mm) | 26.70 x 26.70 1004-2121 | | | |
| 24" x 24" (600 mm x 600 mm) | 30.50 x 30.50 1004-2424 | 30.50 x 30.50 1004-2424RC | | |
| 27" x 27" (700 mm x 700 mm) | 34.00 x 34.00 1004-2727 | 34.00 x 34.00 1004-2727RC | | |

1005 Series Couplings

Concrete to Clay

* Insert bushing included **Red** high torque clamps included new

| NOMINAL PIPE DIAMETER | STANDARD | STRONG BACK 1000 RC SERIES | STRONG BACK 5000 RC SERIES | ECCENTRIC |
|-----------------------------|------------------------------------|--------------------------------------|-------------------------------|-------------------------------------|
| 4" x 4" (100 mm x 100 mm) | 5.51 x 5.00 1005-44* | 5.51 x 5.00 1005-44RC* | | |
| 6" x 4" (150 mm x 100 mm) | 7.58 x 5.00 1005-64* | | | 7.58 x 5.00 1005-64EB |
| 6" x 6" (150 mm x 150 mm) | 7.58 x 7.38 1005-66* | | | |
| 8" x 6" (200 mm x 150 mm) | 10.38 x 6.15 1005-86* | | | |
| 8" x 8" (200 mm x 200 mm) | 10.38 x 7.20 1005-88* | 10.38 x 9.65 1005-88RC* | | |
| 10" x 10" (250 mm x 250 mm) | 12.40 x 12.40 1005-1010 | | | |
| 12" x 10" (300 mm x 250 mm) | 15.38 x 12.60 1005-1210* | | | 15.38 x 12.60 1005-1210EB |
| 12" x 12" (300 mm x 300 mm) | 15.38 x 14.38 1005-1212* | | | |
| 15" x 15" (375 mm x 375 mm) | 19.70 x 17.40 1005-1515* | 19.70 x 17.40 1005-1515RC* | | |

1006 Series Couplings

Concrete to CI, Plastic, Copper, Steel or Lead

| NOMINAL PIPE DIAMETER | STANDARD | STRONG BACK 1000 RC SERIES | STRONG BACK 5000 RC SERIES | ECCENTRIC |
|-------------------------------|-----------------------------------|-----------------------------------|-------------------------------------|------------------------------------|
| 4" x 4" (100 mm x 100 mm) | 5.57 x 4.31 1006-44 | 5.64 x 4.51 1006-44RC | 5.64 x 4.51 5006-44RC | 5.51 x 4.50 1006-44EB |
| 4" x 4" SDR (100 mm x 100 mm) | | | 5.51 x 4.38 5006-44SDRRC* | |
| 4" x 4" LC (100 mm x 100 mm) | 5.88 x 4.50 1006-44LC | 5.88 x 4.50 1006-LCRC | 5.88 x 4.50 5006-LCRC | |
| 5" x 4" (125 mm x 125 mm) | 5.78 x 4.47 1006-54* | | | |
| 6" x 4" (150 mm x 100 mm) | 7.75 x 4.31 1006-64 | 7.58 x 4.38 1006-64RC* | 7.58 x 4.38 5006-64RC* | 7.58 x 4.38 1006-64EB |
| 6" x 4" SDR (150 mm x 100 mm) | | | 7.50 x 4.38 5006-64SDRRC* | |
| 6" x 5" (150 mm x 125 mm) | 7.66 x 5.50 1006-65* | | | 7.66 x 5.50 1006-65EB |
| 6" x 6" (150 mm x 150 mm) | 7.66 x 6.65 1006-66 | 7.63 x 6.63 1006-66RC | 7.63 x 6.63 5006-66RC | 7.58 x 6.38 1006-66EB |
| 6" x 6" LC (150 mm x 150 mm) | | 8.04 x 6.58 1006-66LCRC | 8.04 x 6.58 5006-66LCRC | |
| 8" x 4" (200 mm x 100 mm) | 10.25 x 4.38 1006-84* | | | 10.38 x 4.50 1006-84EB |
| 8" x 6" (200 mm x 150 mm) | 10.25 x 6.38 1006-86* | 10.38 x 6.38 1006-86RC* | 10.38 x 6.38 5006-86RC* | 10.38 x 6.38 1006-86EB |
| 8" x 8" (200 mm x 200 mm) | 10.25 x 8.50 1006-88 | 10.49 x 8.63 1006-88RC | 10.49 x 8.63 5006-88RC | 10.38 x 8.50 1006-88EB |
| 8" x 8" LC (200 mm x 200 mm) | 12.50 x 8.62 1006-88LC | | | |
| 10" x 8" (250 mm x 200 mm) | 12.50 x 8.38 1006-10-8* | | | 12.40 x 8.38 1006-10-8EB |

1006 Series Couplings

Concrete to CI, Plastic, Copper, Steel or Lead

* Insert bushing included **Red** high torque clamps included

new

| | | | | |
|---------------------------------------|--------------------------------------|--|--|---------------------------------------|
| 10" x 10" (250 mm x 250 mm) | 12.60 x 10.60 1006-1010 | 12.40 x 10.75 1006-1010RC | 12.40 x 10.75 5006-1010RC* | |
| 12" x 10" (300 mm x 250 mm) | 16.29 x 10.75 1006-1210* | 15.38 x 10.60 1006-1210RC* | | 15.38 x 10.60 1006-1210EB |
| 12" x 10" (300 mm x 250 mm) | 16.10 x 10.60 1006-1210LC* | | | |
| 12" x 12" (300 mm x 300 mm) | 16.29 x 12.39 1006-1212 | 15.25 x 12.60 1006-1212RC* | 15.25 x 12.60 5006-1212RC* | 15.38 x 12.60 1006-1212EB |
| 12" x 12" LC (300 mm x 300 mm) | 16.10 x 12.60 1006-1212LC* | 16.10 x 12.60 1006-1212LCRC* | 16.10 x 12.60 5006-1212LCRC* | 16.10 x 12.60 1006-1212LCB* |
| 15" x 10" (375 mm x 250 mm) | 19.82 x 10.60 1006-1510* | | | |
| 15" x 12" (375 mm x 300 mm) | 19.82 x 12.60 1006-1512* | 19.82 x 12.60 1006-1512RC* | | 19.70 x 12.60 1006-1512EB |
| 15" x 15" (375 mm x 375 mm) | 19.82 x 15.43 1006-1515 | 19.74 x 15.40 1006-1515RC* | 19.74 x 15.40 5006-1515RC | |
| 18" x 18" (450 mm x 450 mm) | 22.50 x 18.90 1006-1818* | 22.50 x 18.90 1006-1818RC* | 22.50 x 18.90 5006-1818RC* | |
| 21" x 21" (525 mm x 525 mm) | 26.70 x 22.30 1006-2121* | 26.70 x 22.30 1006-2121RC* | | |
| 24" x 24" (600 mm x 600 mm) | 30.50 x 25.00 1006-2424* | 30.50 x 25.00 1006-2424RC* | | |
| 27" x 27" (700 mm x 700 mm) | 34.00 x 28.00 1006-2727* | 34.00 x 28.00 1006-2727RC* | 34.00 x 28.00 5006-2727RC* | |

1051 Series Couplings

AC, DI to CI, Plastic, Copper, Steel or Lead

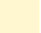
| NOMINAL PIPE DIAMETER | STANDARD | STRONG BACK 1000 RC SERIES | STRONG BACK 5000 RC SERIES | ECCENTRIC |
|------------------------------------|-----------------------------------|-------------------------------------|-------------------------------------|---------------------------------|
| 4" x 4" (100 mm x 100 mm) | 4.80 x 4.53 1051-44 | 4.80 x 4.39 1051-44RC | 4.80 x 4.39 5051-44RC | 4.25 x 4.38 1051-44EB |
| 4" x 6" (100 mm x 150 mm) | 4.75 x 6.60 1051-46* | 4.75 x 6.60 1051-46RC* | 4.75 x 6.60 1051-46RC* | |
| 5" x 4" (125 mm x 100 mm) | 5.75 x 4.47 1051-54 | | | 6.00 x 4.38 1051-54EB |
| 5" x 5" (125 mm x 125 mm) | 6.05 x 5.54 1051-55 | 5.90 x 5.50 1051-55RC* | | |
| 6" x 4" (150 mm x 100 mm) | 6.84 x 4.30 1051-64 | 6.95 x 4.38 1051-64RC* | 6.95 x 4.38 5051-64RC* | 6.95 x 4.38 1051-64EB |
| 6" x 5" (150 mm x 125 mm) | 6.81 x 5.17 1051-65 | 6.95 x 5.50 1051-65RC* | | 9.05 x 4.38 1051-65EB |
| 6" x 6" (150 mm x 150 mm) | 6.81 x 6.39 1051-66 | 6.96 x 6.60 1051-66RC | 6.96 x 6.60 5051-66RC | |
| 8" x 4" (200 mm x 100 mm) | 9.12 x 4.38 1051-84* | 9.12 x 4.50 1051-84RC* | | 9.05 x 4.38 1051-84EB |
| 8" x 6" (200 mm x 150 mm) | 9.12 x 6.38 1051-86* | 9.12 x 6.38 1051-86RC* | | 9.05 x 6.38 1051-86EB |
| 8" x 8" (200 mm x 200 mm) | 9.12 x 8.49 1051-88 | 9.25 x 8.51 1051-88RC | 9.25 x 8.51 5051-88RC | |
| 10" x 8" (250 mm x 200 mm) | 11.05 x 8.38 1051-10-8* | 11.02 x 8.38 1051-10-8RC* | | |
| 10" x 10" (250 mm x 250 mm) | 11.05 x 10.65 1051-1010 | 11.02 x 10.52 1051-1010RC | 11.02 x 10.52 5051-1010RC | |

1051 Series Couplings

AC, DI to CI, Plastic, Copper, Steel or Lead

* Insert bushing included

Red high torque clamps included

 new

| | | | |
|------------------------------------|------------------------------------|--------------------------------------|--------------------------------------|
| 10" x 10" (250 mm x 250 mm) | 11.05 x 10.65 1051-1010 | 11.02 x 10.52 1051-1010RC | 11.02 x 10.52 5051-1010RC |
| 12" x 10" (300 mm x 250 mm) | 13.00 x 10.75 1051-1210* | 13.00 x 10.60 1051-1210RC* | 13.20 x 10.60 1051-1210EB |
| 12" x 12" (300 mm x 300 mm) | 13.00 x 12.38 1051-1212 | 13.37 x 12.60 1051-1212RC* | 13.37 x 12.60 5051-1212RC* |
| 12" x 15" (300 mm x 375 mm) | 15.44 x 13.20 1051-1215* | | |
| 15" x 10" (375 mm x 250 mm) | 15.90 x 10.60 1051-1510* | | 15.90 x 10.60 1051-1510EB |
| 15" x 12" (375 mm x 300 mm) | 15.90 x 12.60 1051-1512* | | |
| 15" x 15" (375 mm x 375 mm) | 15.90 x 15.90 1051-1515 | 15.90 x 15.40 1051-1515RC* | |
| 18" x 18" (450 mm x 450 mm) | 19.75 x 18.75 1051-1818 | 19.75 x 18.75 1051-1818RC | |
| 24" x 24" (600 mm x 600 mm) | 25.80 x 25.10 1051-2424 | 25.80 x 25.10 1051-2424RC | |

1055 Series Couplings

AC or DI to AC or DI

| NOMINAL PIPE DIAMETER | STANDARD | STRONG BACK 1000 RC SERIES | STRONG BACK 5000 RC SERIES | ECCENTRIC |
|------------------------------------|------------------------------------|--------------------------------------|-------------------------------------|-------------------------------------|
| 4" x 4" (100 mm x 100 mm) | 4.76 x 3.76 1055-44 | 4.75 x 4.75 1055-44RC | 4.75 x 4.75 5055-44RC | |
| 5" x 4" (125 mm x 100 mm) | 6.05 x 5.00 1055-54* | | | |
| 5" x 5" (125 mm x 125 mm) | 6.05 x 6.05 1055-55 | | | |
| 6" x 4" (150 mm x 100 mm) | 6.81 x 4.80 1055-64 | 6.95 x 5.00 1055-64RC* | | 6.95 x 5.00 1055-64EB |
| 6" x 5" (150 mm x 125 mm) | 6.84 x 5.89 1055-65 | | | 6.95 x 5.90 1055-65EB |
| 6" x 6" (150 mm x 150 mm) | 6.95 x 6.95 1055-66 | 6.95 x 6.95 1055-66RC | 6.95 x 6.95 5055-66RC | |
| 8" x 4" (200 mm x 100 mm) | 9.04 x 5.00 1055-84* | | | 9.04 x 5.00 1055-84EB |
| 8" x 6" (200 mm x 150 mm) | 9.04 x 6.80 1055-86* | 9.04 x 6.80 1055-86RC* | 9.04 x 6.80 5055-86RC* | 9.04 x 6.80 1055-86EB |
| 8" x 8" (200 mm x 200 mm) | 9.04 x 9.04 1055-88 | 9.04 x 9.04 1055-88RC | 9.04 x 9.04 5055-88RC | |
| 10" x 8" (250 mm x 200 mm) | 10.86 x 9.05 1055-10-8* | | | 10.86 x 9.05 1055-10-8EB* |
| 10" x 10" (250 mm x 250 mm) | 10.86 x 10.86 1055-1010 | 10.86 x 10.86 1055-1010RC | 10.86 x 10.86 5055-1010RC | |
| 12" x 8" (300 mm x 200 mm) | 13.00 x 9.05 1055-12-8* | | | |
| 12" x 10" (300 mm x 250 mm) | 13.20 x 11.12 1055-1210* | 13.20 x 11.12 1055-1210RC* | | 13.20 x 11.12 1055-1210EB |
| 12" x 12" (300 mm x 300 mm) | 13.20 x 13.20 1055-1212 | 13.37 x 13.37 1055-1212RC | 13.37 x 13.37 5055-1212RC | |
| 15" x 10" (375 mm x 250 mm) | 16.80 x 11.12 1055-1510* | | | |

1055 Series Couplings

AC or DI to AC or DI

* Insert bushing included **Red** high torque clamps included new

| | | | |
|-----------------------------|------------------------------------|--------------------------------------|-------------------------------------|
| 15" x 12" (375 mm x 300 mm) | 16.80 x 13.20 1055-1512* | 16.80 x 13.20 1055-1512RC* | 16.80 x 13.20 1055-1512EB |
| 15" x 15" (375 mm x 375 mm) | 16.80 x 16.80 1055-1515 | 16.30 x 16.30 1055-1515RC | |
| 18" x 18" (450 mm x 450 mm) | 19.70 x 19.70 1055-1818 | 19.70 x 19.70 1055-1818RC | |
| 24" x 24" (600 mm x 600 mm) | 25.80 x 10.00 1055-2424 | 25.80 x 10.00 1055-2424RC | |

1056 Series Couplings

CI, Plastic, Copper, Steel or Lead to CI, Plastic, Copper, Steel or Lead

| NOMINAL PIPE DIAMETER | STANDARD | STRONG BACK 1000 RC SERIES | STRONG BACK 5000 RC SERIES | ECCENTRIC |
|-------------------------------|------------------------------------|--------------------------------------|----------------------------------|----------------------------------|
| 0.75" x 0.75" (19 mm x 19 mm) | 1.05 x 1.05 1056-075 | | | |
| 1" x 1" (25 mm x 25 mm) | 1.31 x 1.31 1056-100 | | | |
| 1.25" x 1.25" (32 mm x 32 mm) | 1.63 x 1.63 1056-125 | | | |
| 1.50" x 1.25" (38 mm x 32 mm) | 1.94 x 1.63 1056-150/125 | | | |
| 1.5" x 1.50" (38 mm x 38 mm) | 1.94 x 1.94 1056-150 | 1.94 x 1.94 1056-150RC | | |
| 2" x 1.50" (51 mm x 38 mm) | 2.41 x 1.84 1056-215 | 2.41 x 1.84 1056-215RC | | |
| 2" x 2" (51 mm x 51 mm) | 2.41 x 2.41 1056-22 | 2.41 x 2.41 1056-22RC | | |
| 2.50" x 1.25" (64 mm x 32 mm) | 2.88 x 1.63 1056-250/125 | 2.88 x 1.63 1056-250/125RC | | |
| 2.50" x 1.50" (64 mm x 38 mm) | 2.88 x 1.84 1056-250/150 | 2.88 x 1.84 1056-250/150RC | | |
| 2.50" x 2" (64 mm x 51 mm) | 2.88 x 2.38 1056-250/22 | 2.88 x 2.38 1056-250/22RC | | |
| 2.50" x 2.50" (64 mm x 64 mm) | 2.88 x 2.88 1056-250 | 2.88 x 2.88 1056-250RC | | |
| 3" x 1.50" (76 mm x 38 mm) | 3.35 x 1.91 1056-315 | | | 3.46 x 1.90 1056-315EB |
| 3" x 2.50" (76 mm x 64 mm) | 3.55 x 2.88 1056-3/250 | 3.55 x 2.88 1056-3/250RC | | |
| 3" x 3" (76 mm x 76 mm) | 3.46 x 3.46 1056-33 | 3.46 x 3.46 1056-33RC | 3.46 x 3.46 5056-33RC | |
| 4" x 1.50" (100 mm x 38 mm) | 4.39 x 1.91 1056-415 | | | |
| 4" x 4" (100 mm x 100 mm) | 4.58 x 4.58 1056-44 | 4.58 x 4.58 1056-44RC | 4.58 x 4.58 5056-44RC | |
| 5" x 4" (125 mm x 100 mm) | 5.57 x 4.26 1056-54 | 5.52 x 4.38 1056-54RC | 5.52 x 4.38 5056-54RC | 5.52 x 4.50 1056-54EB |
| 5" x 5" (125 mm x 125 mm) | 5.52 x 5.52 1056-55 | 5.52 x 5.52 1056-55RC | 5.52 x 5.52 5056-55RC | |
| 6" x 4" (150 mm x 100 mm) | 6.61 x 4.46 1056-64 | 6.60 x 4.50 1056-64RC* | 6.60 x 4.50 5056-64RC* | 6.60 x 4.50 1056-64EB |
| 6" x 5" (150 mm x 125 mm) | 6.48 x 5.46 1056-65 | 6.60 x 5.62 1056-65RC | 6.60 x 5.62 5056-65RC | 6.60 x 5.50 1056-65EB |

1056 Series Couplings

Cl, Plastic, Copper, Steel or Lead to
Cl, Plastic, Copper, Steel or Lead

* Insert bushing included **Red** high torque clamps included new

| | | | | |
|------------------------------------|-----------------------------------|-------------------------------------|-------------------------------------|--------------------------------------|
| 6" x 6" (150 mm x 150 mm) | 6.60 x 6.60 1056-66 | 6.60 x 6.60 1056-66RC | 6.60 x 6.60 5056-66RC | |
| 8" x 4" (200 mm x 150 mm) | 8.51 x 4.38 1056-84* | 8.64 x 4.50 1056-84RC* | | 8.64 x 4.38 1056-84EB |
| 8" x 6" (200 mm x 150 mm) | 8.51 x 6.38 1056-86 | 8.64 x 6.38 1056-86RC* | 8.64 x 6.38 5056-86RC | 8.64 x 6.38 1056-86EB |
| 8" x 8" (200 mm x 200 mm) | 8.64 x 8.64 1056-88 | 8.64 x 8.64 1056-88RC | 8.64 x 8.64 5056-88RC | |
| 10" x 8" (250 mm x 200 mm) | 10.25 x 8.42 1056-10-8 | 10.63 x 8.62 1056-10-8RC | 10.63 x 8.62 5056-10-8RC | 10.63 x 8.38 1056-10-8EB |
| 10" x 10" (250 mm x 250 mm) | 10.63 x 10.63 1056-1010 | 10.63 x 10.63 1056-1010RC | 10.63 x 10.63 5056-1010RC | |
| 12" x 10" (300 mm x 250 mm) | 12.50 x 10.65 1056-1210 | 12.52 x 10.75 1056-1210RC | 12.52 x 10.75 5056-1210RC | 12.52 x 10.60 1056-1210EB* |
| 12" x 12" (300 mm x 300 mm) | 12.52 x 12.52 1056-1212 | 12.52 x 12.52 1056-1212RC | 12.52 x 12.52 5056-1212RC | |
| 15" x 10" (375 mm x 250 mm) | 15.44 x 10.60 1056-1510 | | | 15.44 x 10.60 1056-1510EB |
| 15" x 12" (375 mm x 300 mm) | 15.75 x 12.25 1056-1512 | 15.12 x 12.60 1056-1512RC | | 15.44 x 12.60 1056-1512EB |
| 15" x 15" (375 mm x 375 mm) | 15.44 x 15.44 1056-1515 | 15.92 x 15.92 1056-1515RC | 15.92 x 15.92 5056-1515RC | |
| 18" x 18" (450 mm x 450 mm) | 19.00 x 19.00 1056-1818 | 19.10 x 19.00 1056-1818RC | 19.10 x 19.10 5056-1818RC | |
| 21" x 21" (525 mm x 525 mm) | 22.50 x 22.50 1056-2121 | 22.50 x 22.50 1056-2121RC | | |
| 24" x 24" (600 mm x 600 mm) | 25.10 x 10.00 1056-2424 | 25.10 x 25.10 1056-2424RC | 25.10 x 25.10 5056-2424RC | |
| 27" x 27" (700 mm x 700 mm) | 28.30 x 28.30 1056-2727 | 28.30 x 28.30 1056-2727RC | | |

1057 Series Couplings

Concrete to DI

| NOMINAL PIPE DIAMETER | STANDARD | STRONG BACK 1000 RC SERIES | STRONG BACK 5000 RC SERIES | ECCENTRIC |
|---------------------------------------|------------------------------------|--------------------------------------|--|-------------------------------------|
| 4" x 4" (100 mm x 100 mm) | 5.51 x 5.00 1057-44* | 5.51 x 5.00 1057-44RC* | | |
| 6" x 4" (150 mm x 100 mm) | 7.58 x 5.00 1057-64* | | | 7.58 x 5.00 1057-64EB* |
| 6" x 6" (150 mm x 150 mm) | 7.58 x 6.80 1057-66* | 7.58 x 6.80 1057-66RC* | | |
| 6" x 8" (150 mm x 200 mm) | 9.04 x 7.80 1057-68* | 9.04 x 7.80 1057-68RC* | | 9.04 x 7.80 1057-EBRC* |
| 8" x 6" (200 mm x 150 mm) | 10.00 x 6.80 1057-86* | 10.00 x 6.80 1057-86RC* | | |
| 8" x 8" (200 mm x 200 mm) | 10.00 x 8.92 1057-88 | 10.00 x 8.92 1057-88RC | | |
| 10" x 10" (250 mm x 250 mm) | 12.40 x 11.12 1057-1010* | 12.40 x 11.12 1057-1010RC* | | |
| 10" x 10" LC (250 mm x 250 mm) | | | 14.00 x 11.12 5057-1010LCRC* | |
| 12" x 6" (300 mm x 150 mm) | 15.25 x 6.80 1057-12-6* | | | 15.25 x 6.80 1057-12-6EB* |

1057 Series Couplings

Concrete to DI

* Insert bushing included Red high torque clamps included new

| | | | |
|---------------------------------------|--------------------------------------|--|--|
| 12" x 8" (300 mm x 200 mm) | 16.28 x 9.05 1057-12-8* | | 16.25 x 6.80 1057-12-8EB* |
| 12" x 10" (300 mm x 250 mm) | 16.28 x 11.12 1057-1210* | | |
| 12" x 10" LC (300 mm x 250 mm) | 16.10 x 11.12 1057-1210LC* | | |
| 12" x 12" (300 mm x 300 mm) | 15.25 x 13.20 1057-1212* | 16.10 x 13.20 1057-1212RC* | |
| 12" x 12" LC (300 mm x 300 mm) | 16.10 x 13.20 1057-1212LC* | 16.10 x 13.20 1057-1212LCRC* | 16.10 x 13.20 5057-1212LCRC* |
| 15" x 8" (375 mm x 200 mm) | 16.28 x 9.05 1057-15-8* | | |
| 15" x 10" (375 mm x 250 mm) | 16.28 x 11.12 1057-1510* | | |
| 15" x 12" (375 mm x 300 mm) | 16.28 x 13.20 1057-1512* | 19.70 x 13.20 1057-1512RC* | |
| 15" x 15" (375 mm x 375 mm) | 19.70 x 16.50 1057-1515* | 19.70 x 16.50 1057-1515RC* | |



Waterworks Market Sales Reps

- 1. David Gooding, Inc.**
Brockton, MA
(508) 894-2000
ME, NH, VT, MA, RI, CT
- 2. Empire State Assoc.**
Ballston Spa, NY
(518) 602-0271
NY
- 3. Saga Sales, Inc.**
Englewood, NJ
(908) 505-9990
New York City, Long Island,
Northern New Jersey
- 4. Charles Morrow & Assoc.**
Buckhannon, WV
(304) 472-9005
E. PA, S. NJ, DE, VA, D.C., MD
- 5. Fehr & Howard Sales Inc.**
Greensburg, PA
(724) 838-9394
West PA, WV
- 6. Hydrosorce**
Chagrin Falls, OH
(440) 247-9150
IN, OH, Lower MI
- 7. Eaton Mechanical Sales**
Prarie View, IL
(847) 980-7253
N. IL
- 8. Mack McClain & Assoc.**
Olathe, KS
(913) 339-6677
KS, W. MO
St. Louis, MO
(314) 894-8188
S. IL, E. MO
- 9. Mankin & Assoc.**
Earlham, IA
(515) 758-2956
IA, NE
- 10. McCullough & Assoc.**
Edina, MN
(952) 946-0126
MN, WI, ND, SD, Upper MI

- 11. Repmasters, Inc.**
Commerce City, CO
(303) 286-7575
CO, MT, WY
- 12. McGregor & Assoc.**
West Jordan, UT
(801) 566-8225
UT, ID
- 13. Gordon & Assoc.**
Vancouver, WA
(360) 566-1470
WA, OR, AK
- 14. RD/Kincaide & Assoc.**
Benicia, CA
(707) 745-3655
N. CA, N. NV
- 15. Stan Roberts & Assoc., Inc.**
Houston, TX
(713) 224-9845
South TX
Dallas, TX
(214) 637-2816
North TX
- 16. PSA**
Little Rock, AR
(501) 312-8700
AR
- 17. OK! Sales**
Broken Arrow, OK
(405) 794-5200
OK
- 18. Billingsley BWC**
Kenner, LA
(504) 602-8100
LA, MS
- 19. Wm. M. McClain Co, Inc.**
Nashville, TN
(615) 226-9601
TN
- 20. Banks & Head Agency**
Anniston, AL
(256) 235-9000
AL
- 21. Buchanan Sales**
Kennesaw, GA
(770) 425-6028
GA

- 22. L.J. Ruffin & Assoc.**
Boca Raton, FL
(561) 997-0999
FL
- 23. Ultratech Water Resources**
Shelby, NC
(704) 445-0220
NC, SC
- 24. Pinnacle Marketing**
Albuquerque, NM
(502) 345-2700
NM, El Paso, TX
- 25. Kemper Sales & Assoc.**
Nicholasville, KY
(859) 881-8624
KY
- 26. New Horizon Sales, Inc.**
Phoenix, AZ
(602) 437-4795
Clark County, NV, AZ
- 27. Mainline Sales, Inc.**
Anaheim, CA
(877) 300-9346
S. CA, HI

PUERTO RICO

- 33. Inter American Builders Agencies**
Carolina, PR
(787) 752-0200
Puerto Rico

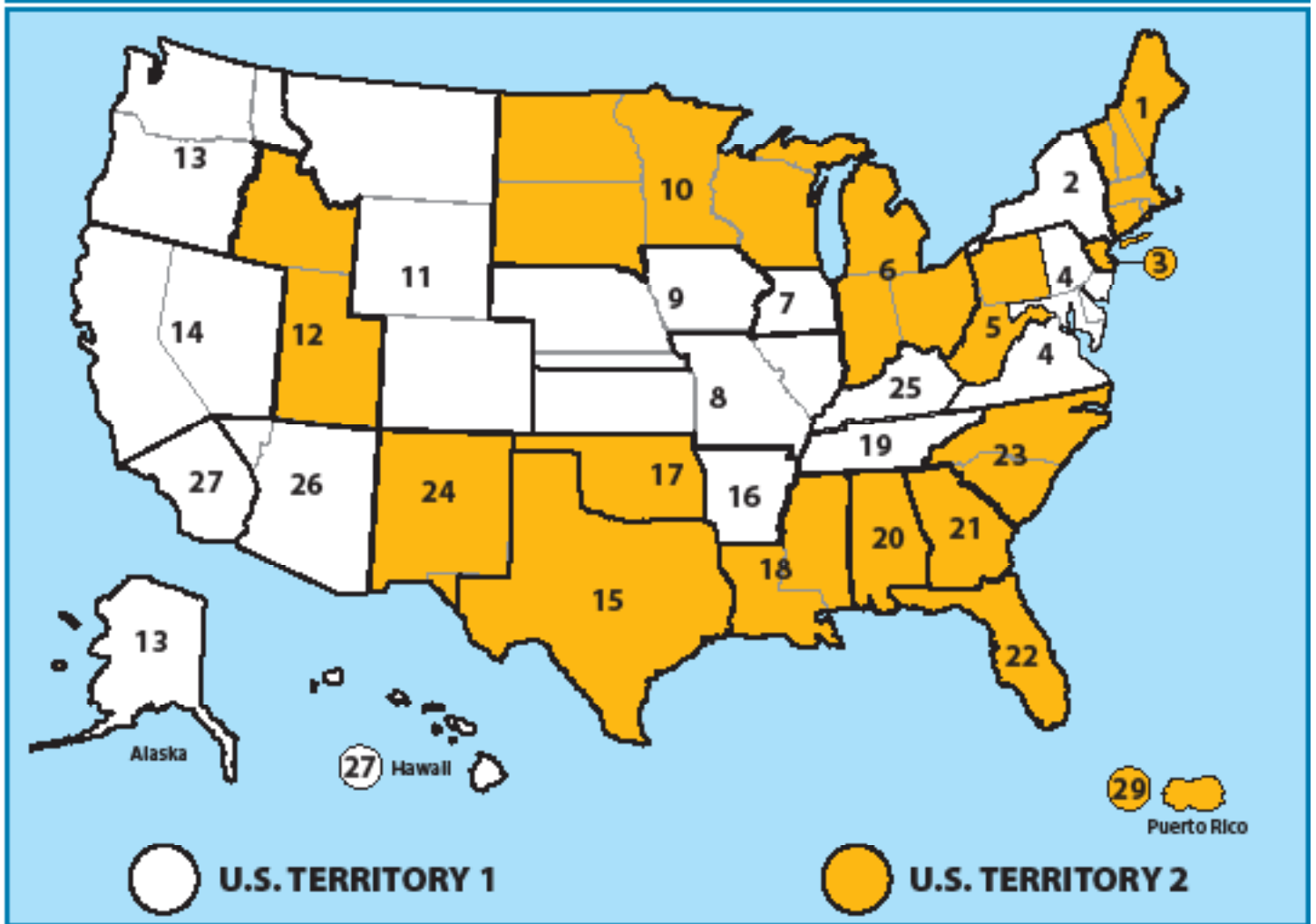
MEXICO

- 34. Ardent Sales**
Long Beach, CA
(562) 552-4169
Mexico

CANADA

- 40. Barclay Sales LTD.**
Port Coquitlam, BC
(604) 945-1010
- 41. Spectrum Sales Agencies 1982 LTD.**
Calgary, Alberta
(403) 255-8332
Edmonton, Alberta
(780) 486-2525
- 42. Jones Goodridge**
Winnipeg, Manitoba
(204) 632-6221
Regina, Sask
(306) 530-9056
Saskatoon, Sask
(306) 933-4377
- 43. Showerline Sales LTD.**
London, Ontario
(519) 657-2694
Waterloo, Ontario
(519) 885-1578
- 44. Armco Agencies LTD.**
Mississauga, Ontario
(905) 238-8448
- 45. Ventes Bergeron Sales**
Russell, Ontario
(613) 445-4170
- 46. Northern Mechanical Sales**
Garson, Ontario
(705) 693-2715
- 47. Agencies J. Pierre Sylvain, Inc.**
Boucherville, Que.
(450) 655-9588
Quebec, PQ
(418) 570-0703
- 48. NerohTek Sales**
Windsor, N.S.
(902) 869-0103
- 49. Par Four Plumbing**
St. Johns, N.F.
(709) 739-7177

WaterWorks Market Sales Map



Resources

Plumbing Market Sales Reps

1. David Gooding, Inc.

Brockton, MA
(508) 894-2000
ME, NH, VT, MA, RI, CT

2. Empire State Assoc.

Ballston Spa, NY
(518) 602-0271
NY

3. Altherm, Inc.

Englewood, NJ
(201) 871-0500
New York City, Long Island,
Northern New Jersey

4. Rich-Tomkins Company, Inc.

Aston, PA
(610) 859-3552
E. PA, Southern NJ, DE

5. Fehr & Howard Sales Inc.

Greensburg, PA
(724) 838-9394
West PA, WV

6. Lowder Sales

Lewis Center, OH
(800) 221-5650
OH

7. Lozuaway & Assoc.

Grand Blanc, MI
(810) 234-1635
MI

8. Ashworth—Train Assoc.

Indianapolis, IN
(317) 722-1950
IN

9. Kast Marketing, Inc.

Bensonville, IL
(630) 227-0600
N. IL

10. McCullough & Assoc.

Edina, MN
(952) 946-0126
MN, WI, ND, SD, Upper MI

11. Mankin & Assoc.

Earlham, IA
(515) 758-2956
IA, NE

12. Mack McClain & Assoc.

Olathe, KS
(913) 339-6677
KS, W. MO

13. T.M. Sales

Denver, CO
(303) 375-1515
CO, MT, WY

14. McGregor & Assoc.

West Jordan, UT
(801) 566-8225
UT, ID

15. Gordon & Assoc.

Vancouver, WA
(360) 566-1470
WA, OR, AK

16. RD/Kincaide & Assoc.

Benicia, CA
(707) 745-3655
N. CA, N. NV

17. Carrhill Company

City of Commerce, CA
(323) 724-6087
S. CA, Clark County, NV, HI

18. BC Sales

Goodyear, AZ
(623) 810-2334
AZ

19. Stan Roberts & Assoc., Inc.

Houston, TX
(713) 224-9845
South TX

Dallas, TX
(214) 637-2816
North TX

20. PSA

Little Rock, AR
(501) 312-8700
AR

21. OK! Sales

Broken Arrow, OK
(405) 794-5200
Tulsa, OK

22. Mack McClain

St. Louis, MO
(314) 894-8188
S. IL, E. MO

23. Billingsley BWC

Kenner, LA
(504) 602-8100
LA, MS

24. Wm. M. McClain Co, Inc.

Nashville, TN
(615) 226-9601
TN

25. Banks & Head Agency

Anniston, AL
(256) 235-9000
AL, Panhandle FL

26. United Sales Agency

Marietta, GA
(770) 514-7444
GA

27. Carr Company

Boca Raton, FL
(561) 997-0999
FL, except Panhandle

28. Pro Marketing

Spartanburg, SC
(864) 578-4334
NC, SC

29. Barger & Assoc.

Yorktown, MD
(888) 697-3755
VA, D.C., MD

30. Pinnacle Marketing

Albuquerque, NM
(502) 345-2700
NM

31. Kemper Sales & Assoc.

Nicholasville, KY
(859) 881-8624
KY

PUERTO RICO

33. Inter American Builders

Agencies
Carolina, PR
(787) 752-0200
Puerto Rico

MEXICO

34. Ardent Sales

Long Beach, CA
(562) 552-4169
Mexico

CANADA

40. Barclay Sales LTD.

Port Coquitlam, BC
(604) 945-1010

41. Spectrum Sales Agencies 1982 LTD.

Calgary, Alberta
(403) 255-8332
Edmonton, Alberta
(780) 486-2525

42. Jones Goodridge

Winnipeg, Manitoba
(204) 632-6221
Regina, Sask
(306) 530-9056
Saskatoon, Sask
(306) 933-4377

43. Showerline Sales LTD.

London, Ontario
(519) 657-2694
Waterloo, Ontario
(519) 885-1578

44. Armco Agencies LTD.

Mississauga, Ontario
(905) 238-8448

45. Ventes Bergeron Sales

Russell, Ontario
(613) 445-4170

46. Northern Mechanical Sales

Garson, Ontario
(705) 693-2715

47. Agencies J. Pierre Sylvain, Inc.

Boucherville, Que.
(450) 655-9588
Quebec, PQ
(418) 570-0703

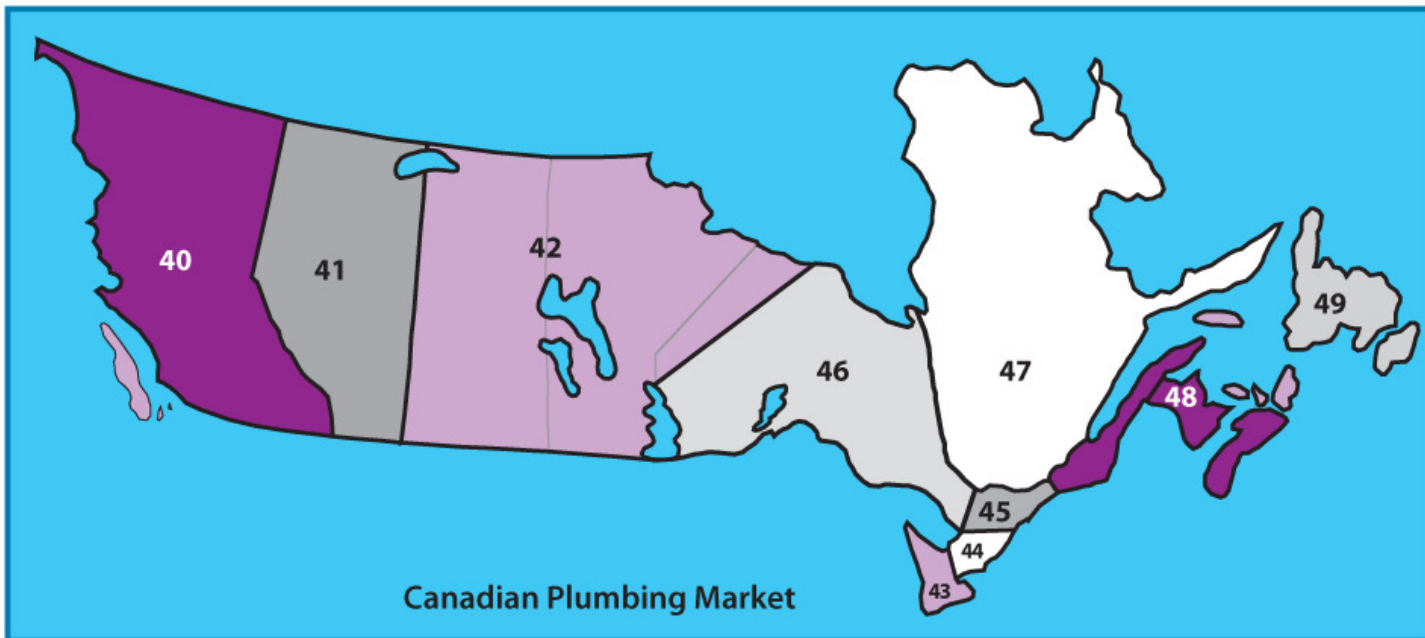
48. NerohTek Sales

Windsor, N.S.
(902) 869-0103

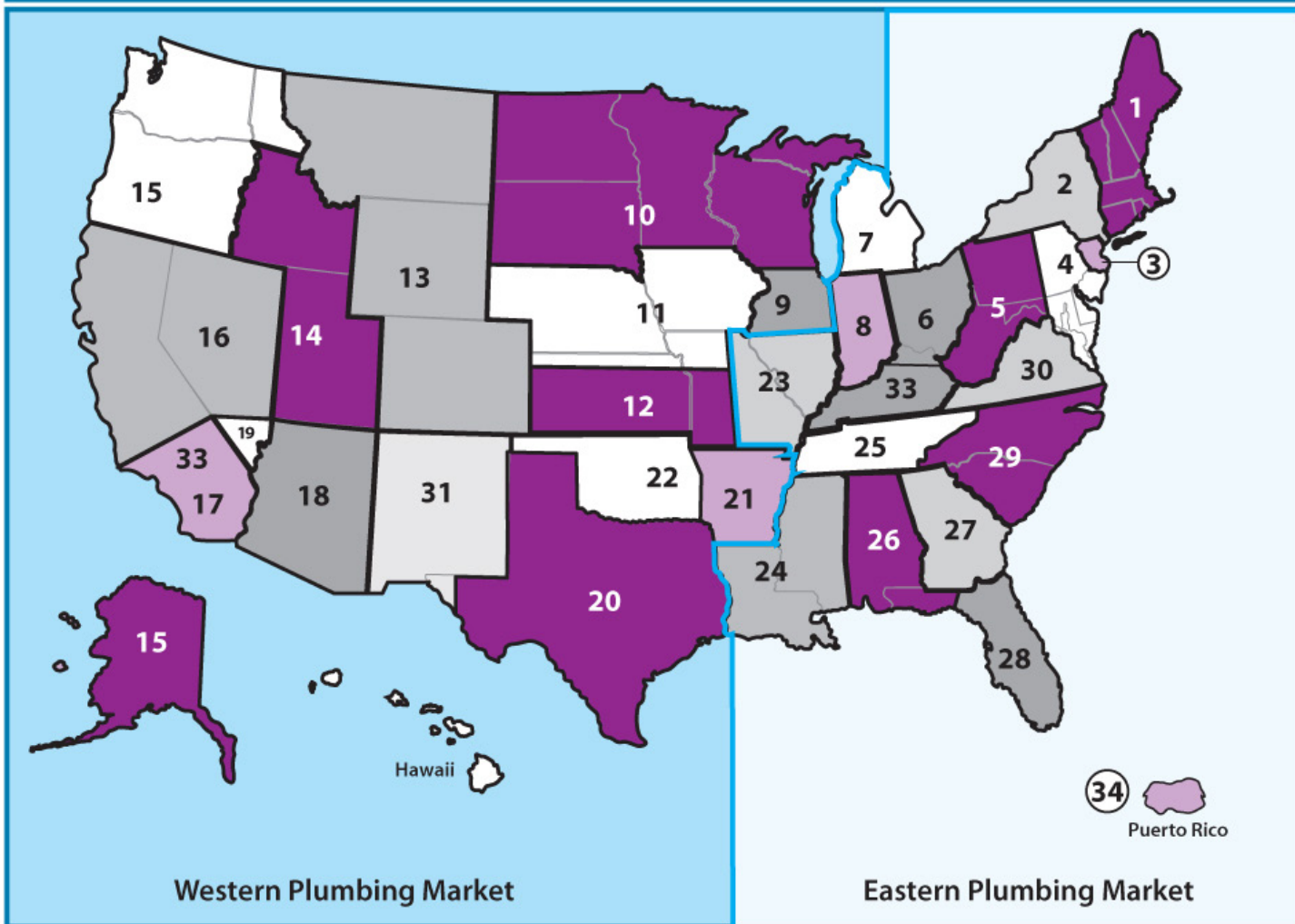
49. Par Four Plumbing

St. Johns, N.F.
(709) 739-7177

Plumbing Market Sales Reps



Canadian Plumbing Market



Western Plumbing Market

Eastern Plumbing Market

Resources

Acid Resistance Chart

Maximum test pressure: 4.3 PSI

Maximum operating temperature: 140° F non-consistent

R - Recommended N - Not Recommended

| Reagent | Flexible Coupling 70°F | Proflex 70°F |
|---------------------------|---------------------------|-----------------|
| Acetic Acid 20% | R | R |
| Acetic Acid 80% | N | N |
| Acetone | N | N |
| Alcohol (Methyl or Ethyl) | R | R |
| Aluminum Chloride | R | R |
| Aluminum Sulfate | R | R |
| Alums | R | R |
| Ammonia Gas (Dry) | R | R |
| Ammonium Chloride | R | R |
| Ammonium Hydroxide | R | R |
| Ammonium Nitrate | R | R |
| Ammonium Phosphate | R | R |
| Ammonium Sulfate | R | R |
| Ammonium Sulfide | R | R |
| Amyl Chloride | N | N |
| Aniline | N | N |
| Aqua Regia | N | N |
| Barium Chloride | R | R |
| Barium Hydroxide | R | R |
| Barium Sulfate | R | R |
| Barium Sulfide | R | R |
| Beer | R | R |
| Beet Sugar Liquors | R | R |
| Benzene | N | N |
| Benzoic Acid | R | N |
| Black Liquor | R | R |
| Bleach 12.5% active Cl2 | R | N |
| Boric Acid | R | R |
| Bromic Acid | R | N |
| Bromine Water | N | N |
| Butane | N | R |
| Butyric Acid | N | N |
| Calcium Carbonate | R | R |
| Calcium Chloride | R | R |
| Calcium Hydroxide | R | R |
| Calcium Hypochlorite | R | N |
| Calcium Sulfate | R | R |
| Cane Sugar Liquors | R | R |
| Carbon Bisulfide | N | N |
| Carbon Dioxide | R | R |
| Carbon Monoxide | R | R |
| Carbon Tetrachloride | N | N |
| Carbon Acid | R | R |
| Caustic Soda | R | N |
| Caustic Soda 50% | R | R |
| Caustic Potash | R | R |
| Chloride (Dry) | N | N |
| Chloride (Wet) | N | N |
| Chloroacetic Acid | N | N |
| Chlorobenzene | N | N |
| Chloroform | N | N |
| Chromic Acid 10% | R | N |
| Chromic Acid 50% | N | N |
| Citric Acid | R | R |
| Copper Chloride | R | R |
| Copper Cyanide | R | R |
| Copper Nitrate | R | R |
| Copper Sulfate | R | R |
| Cottonseed Oil | R | R |
| Cresol | N | N |
| Cyclohexanol | N | R |
| Cyclohexanone | N | N |
| Dimethylamine | N | N |
| Diethyl Pthalate | N | N |

| Reagent | Flexible Coupling 70°F | Proflex 70°F |
|----------------------------|---------------------------|-----------------|
| Disodium Phosphate | N | N |
| Distilled Water | R | R |
| Ethers | N | N |
| Ethyl Acetate | N | N |
| Ethylene Chloride | N | N |
| Ethylene Glycol | R | R |
| Fatty Acids (C6) | R | R |
| Ferric Chloride | R | R |
| Ferric Sulfate | R | R |
| Fluorine (Gas Wet) | N | N |
| Formaldehyde (20%) | R | R |
| Formic Acid (10%) | R | R |
| Freon 12 Dry | N | R |
| Fruit Juices & Pulp | R | R |
| Furfural | N | N |
| Gasoline (Refined) | N | N |
| Glucose | N | R |
| Glycerine | R | R |
| Hydrobromic Acid (20%) | R | N |
| Hydrochloric Acid | R | N |
| Hydrocyanic Acid | R | R |
| Hydroquinone | R | N |
| Hypochlorous Acid | R | N |
| Iodine | N | N |
| Kerosene | N | N |
| Lactic Acid 25% | R | R |
| Linseed Oil | R | R |
| Liquors | N | N |
| Machine Oil | N | N |
| Magnesium Chloride | R | R |
| Magnesium Sulfate | R | R |
| Maleic Acid | N | N |
| Methyl Chloride | N | N |
| Methyl Ethyl Ketone | N | N |
| Milk | R | R |
| Mineral Oils | N | R |
| Muriatic Acid | R | N |
| Nickel Chloride | R | R |
| Nickel Sulfate | R | R |
| Nitric Acid 0-40% | R | N |
| Nitric Acid 41-100% | N | N |
| Oleic Acid | N | N |
| Oelum | N | N |
| Oxalic Acid | R | R |
| Palmitic Acid 10% | R | R |
| Perchloric Acid | N | N |
| Petroleum Oils (Sour) | N | N |
| Phenol 5% | N | N |
| Phosphorous Trichloride | N | N |
| Photographic Solutions | R | R |
| Picric Acid | N | N |
| Plating Solution | R | R |
| Potassium Carbonate | R | R |
| Potassium Chlorate | R | R |
| Potassium Chloride | R | R |
| Potassium Cyanide | R | R |
| Potassium Dichromate | R | R |
| Potassium Hydroxide | R | R |
| Potassium Permanganate 10% | R | R |
| Potassium Sulfate | R | R |
| Propane Gas | R | R |
| Propyl Alcohol | R | R |
| Sea Water | R | R |
| Sewage | R | R |

| Reagent | Flexible Coupling 70°F | Proflex 70°F |
|------------------------|---------------------------|-----------------|
| Silver Cyanide | R | R |
| Silver Nitrate | R | R |
| Silver Sulfate | R | R |
| Sodium Bicarbonate | R | R |
| Sodium Bisulfite | R | R |
| Sodium Carbonate | R | R |
| Sodium Cyanide | R | R |
| Sodium Ferrocyanide | R | R |
| Sodium Hydroxide | R | R |
| Sodium Hypochlorite | R | N |
| Sodium Sulfate | R | R |
| Sodium Sulfide | R | R |
| Sodium Sulfite | R | R |
| Sodium Thiosulfate | R | N |
| Stannic Chloride | R | N |
| Stannous Chloride | R | R |
| Stearic Acid | R | R |
| Sulfite Liquor Sulfur | R | R |
| Sulfur Dioxide (Dry) \ | R | N |
| Sulfur Dioxide (Wet) | R | N |
| Sulfuric Acid 50% | R | R |
| Sulfuric Acid 70% | N | N |
| Sulfuric Acid 93% | N | N |
| Sulfurous Acid | R | N |
| Tannic Acid | R | R |
| Tanning Liquors | R | R |
| Tartaric Acid | R | R |
| Toluene | N | N |
| Trichloroethylene | N | N |
| Triethanolamine | N | N |
| Trisodium Phosphate | R | R |
| Turpentine | N | N |
| Urea | R | R |
| Urine | R | R |
| Vinegar | R | R |
| Water (Fresh) | R | R |
| Water (Salt) | R | R |
| Whiskey | R | R |
| Wines | R | R |
| Xylene | N | N |
| Zinc Chloride | R | R |
| Zinc Sulfate | R | R |

NOTE: The data listed in this table is only to give information in regard to general use and does not constitute a guarantee. Materials should be tested under actual service to determine suitability for a particular purpose.

Fernco, Inc.
300 S. Dayton St.
Davison, MI 48423
fernco.com
P: (810) 503-9000
F: (810) 503-1015

Fernco West
855 Linda Way
Sparks, NV 89431
fernco.com
P: (810) 503-9000
F: (810) 503-1015

TERMS

All prices shown are Trade/List, stated in U.S. currency and subject to change without notice

MINIMUM INVOICE - None

PAYMENT TERMS - 1% 10th prox. NET 30 days unless otherwise stated. Shortage claims must be made to Fernco within 15 days after delivery

FREIGHT TERMS - Prepaid and allowed on net order of \$750.00 or more unless otherwise stated. All others will be prepaid and billed. Claims for loss or damage must be filed with the freight carrier

SALES POLICY - Fernco products are available to any legitimate wholesaler, pipe manufacturer or distributor with approved credit

RETURN POLICY - All returns must be preceded by factory authorization. Minimum 15% restocking charge will apply to all standard Fernco products. All materials returned to Fernco should be in original cartons and be in resalable condition. This amount is subject to change depending on condition of items returned to Fernco

- Fernco Custom Parts are Non-Refundable
- Freight must be prepaid on all return shipments
- Returns will not be allowed after 90 days of invoice date

LIMITED WARRANTY

Fernco warrants its product(s) against defects in workmanship or materials for one (1) year from date of original purchase (unless a shorter period is expressly provided with respect to a particular product). Fernco's total liability under any warranty, or any other claim arising in any way from the product or its use, is limited, at Fernco's option, to refund or replacement of any such product returned to Fernco within the one-year warranty period and determined by Fernco to be defective. To the extent permitted by law, Fernco disclaims and excludes any and all other warranties, express or implied, including without limitation any implied warranty of merchantability or fitness for a particular purpose, and in no event shall Fernco be liable for special, incidental or consequential damages. Failure to follow the installation instructions provided by Fernco will void this warranty. To make a warranty claim, purchaser should have the original receipt and contact Fernco, Inc. Customer Service Department, 810 503-9000. Purchaser is responsible for any shipping charges.

If state law preserves implied warranties, including implied warranties of merchantability and fitness for a particular purpose, such warranties are limited to one-year from the date of the original purchase and as otherwise set forth above. Some states do not allow limitations on how long an implied warranty lasts, or the exclusion of incidental or consequential damages, so such limitation(s) or exclusion(s) may not apply to you.

This written warranty gives you specific legal rights, and you may also have other rights which vary from state to state.





PROVEN. PREFERRED. PROFESSIONAL.