



# LED Disk Light

LDS series

Our LED Disk light fixtures are designed to replace outdated round fluorescent and incandescent flush-mounted ceiling fixtures. Our clean, traditional design and energy efficient technology make this fixture an ideal choice in residential, commercial, retail and hospitality applications. This universal fixture can be used in hallways, bedrooms and more.

Catalog number	
Notes	
Type	

## FEATURES AND BENEFITS:

- ▶ Easy to install in new construction, remodel and retrofit projects
- ▶ Voltage 120V
- ▶ Operating temperature of -31 to 104°F (of -35 to 40°C)
- ▶ L-70 Life > 54000 hrs
- ▶ Energy Star listed
- ▶ cETLus certified. Suitable for wet locations
- ▶ 5-year limited warranty



Finish:  White  Bronze  Nickel

## PRODUCT LEGEND:

Family	Size	Dimming	Watts	CCT	Finish	Pcs
<b>ASD-LDS</b>	<b>X</b>	<b>D</b>	<b>XX</b>	<b>XX</b>	<b>XX</b>	<b>X-pack</b>
LED Disk Light LDS series	4 = 4 inch 6 = 6 inch	Dimmable	10 = 10 W 15 = 15 W	30 = 3,000 K 40 = 4,000 K 50 = 5,000 K	WH = White BZ = Oil Rubbed Bronze NK = Brushed Nickel	6 = 6 pack

## LED DISK LIGHT:

Model	Size	Dimming	Watts	Lumens	CCT	Finish	Dimensions (DxH)
ASD-LDS-4D1030-WH 6-pack	4"	TRIAC	10 W	700 lm	3,000 K	White	4 7/8" x 5/8"
ASD-LDS-4D1040-WH 6-pack	4"	TRIAC	10 W	700 lm	4,000 K	White	4 7/8" x 5/8"
ASD-LDS-4D1050-WH 6-pack	4"	TRIAC	10 W	700 lm	5,000 K	White	4 7/8" x 5/8"
ASD-LDS-4D1030-BZ 6-pack	4"	TRIAC	10 W	700 lm	3,000 K	Oil Rubbed Bronze	4 7/8" x 5/8"
ASD-LDS-4D1040-BZ 6-pack	4"	TRIAC	10 W	700 lm	4,000 K	Oil Rubbed Bronze	4 7/8" x 5/8"
ASD-LDS-4D1050-BZ 6-pack	4"	TRIAC	10 W	700 lm	5,000 K	Oil Rubbed Bronze	4 7/8" x 5/8"
ASD-LDS-4D1030-NK 6-pack	4"	TRIAC	10 W	700 lm	3,000 K	Brushed Nickel	4 7/8" x 5/8"
ASD-LDS-4D1040-NK 6-pack	4"	TRIAC	10 W	700 lm	4,000 K	Brushed Nickel	4 7/8" x 5/8"
ASD-LDS-4D1050-NK 6-pack	4"	TRIAC	10 W	700 lm	5,000 K	Brushed Nickel	4 7/8" x 5/8"
ASD-LDS-6D1530-WH 6-pack	6"	TRIAC	15 W	1,200 lm	3,000 K	White	7 1/8" x 3/4"
ASD-LDS-6D1540-WH 6-pack	6"	TRIAC	15 W	1,300 lm	4,000 K	White	7 1/8" x 3/4"
ASD-LDS-6D1550-WH 6-pack	6"	TRIAC	15 W	1,300 lm	5,000 K	White	7 1/8" x 3/4"
ASD-LDS-6D1530-BZ 6-pack	6"	TRIAC	15 W	1,200 lm	3,000 K	Oil Rubbed Bronze	7 1/8" x 3/4"
ASD-LDS-6D1540-BZ 6-pack	6"	TRIAC	15 W	1,300 lm	4,000 K	Oil Rubbed Bronze	7 1/8" x 3/4"
ASD-LDS-6D1550-BZ 6-pack	6"	TRIAC	15 W	1,300 lm	5,000 K	Oil Rubbed Bronze	7 1/8" x 3/4"
ASD-LDS-6D1530-NK 6-pack	6"	TRIAC	15 W	1,200 lm	3,000 K	Brushed Nickel	7 1/8" x 3/4"
ASD-LDS-6D1540-NK 6-pack	6"	TRIAC	15 W	1,300 lm	4,000 K	Brushed Nickel	7 1/8" x 3/4"
ASD-LDS-6D1550-NK 6-pack	6"	TRIAC	15 W	1,300 lm	5,000 K	Brushed Nickel	7 1/8" x 3/4"

For most up-to-date spec sheets please refer to [asd-lighting.com](http://asd-lighting.com)

ASD LIGHTING CORP

E-mail: [orders@asd-lighting.com](mailto:orders@asd-lighting.com) | Web site: [www.asd-lighting.com](http://www.asd-lighting.com)





# LED Disk Light

LDS series

## PRODUCT SPECIFICATIONS:

Construction & Materials				
Diffuser	White Acrylic			
Housing	Iron			
Finish	White, Oil Rubbed Bronze, Brushed Nickel			
Weight	ASD-LDS-4D1030-WH 6-pack	2 lbs (0.9 kg)	ASD-LDS-6D1530-BZ 6-pack	4 lbs (1.8 kg)
	ASD-LDS-4D1040-WH 6-pack		ASD-LDS-6D1540-BZ 6-pack	
	ASD-LDS-4D1050-WH 6-pack		ASD-LDS-6D1550-BZ 6-pack	
	ASD-LDS-4D1030-BZ 6-pack		ASD-LDS-6D1530-NK 6-pack	
	ASD-LDS-4D1040-BZ 6-pack		ASD-LDS-6D1540-NK 6-pack	
	ASD-LDS-4D1050-BZ 6-pack		ASD-LDS-6D1550-NK 6-pack	
	ASD-LDS-4D1030-NK 6-pack		ASD-LDS-6D1530-WH 6-pack	
	ASD-LDS-4D1040-NK 6-pack		ASD-LDS-6D1540-WH 6-pack	
	ASD-LDS-4D1050-NK 6-pack		ASD-LDS-6D1550-WH 6-pack	
Environmental System				
Work Environment	Suitable for Wet Locations, IP43			
Operating Temperature	-31°F to 104°F (-35°C to 40°C)			
L-70 Life	> 54,000 hrs			
Optical System				
Luminous Flux	ASD-LDS-4D1030-WH 6-pack	700 lm	ASD-LDS-6D1530-BZ 6-pack	1,200 lm
	ASD-LDS-4D1040-WH 6-pack		ASD-LDS-6D1540-BZ 6-pack	1,300 lm
	ASD-LDS-4D1050-WH 6-pack		ASD-LDS-6D1550-BZ 6-pack	1,200 lm
	ASD-LDS-4D1030-BZ 6-pack		ASD-LDS-6D1530-NK 6-pack	1,300 lm
	ASD-LDS-4D1040-BZ 6-pack		ASD-LDS-6D1540-NK 6-pack	1,200 lm
	ASD-LDS-4D1050-BZ 6-pack		ASD-LDS-6D1550-NK 6-pack	1,300 lm
	ASD-LDS-4D1030-NK 6-pack		ASD-LDS-6D1530-WH 6-pack	1,200 lm
	ASD-LDS-4D1040-NK 6-pack		ASD-LDS-6D1540-WH 6-pack	1,300 lm
	ASD-LDS-4D1050-NK 6-pack		ASD-LDS-6D1550-WH 6-pack	1,200 lm
Color Temperature	3,000 K, 4,000 K, 5,000 K			
CRI	90			
Electrical System				
Input Voltage	120V AC 50/60 Hz			
Max input current	ASD-LDS-4D1030-WH 6-pack	0,1 A	ASD-LDS-6D1530-BZ 6-pack	0,15 A
	ASD-LDS-4D1040-WH 6-pack		ASD-LDS-6D1540-BZ 6-pack	
	ASD-LDS-4D1050-WH 6-pack		ASD-LDS-6D1550-BZ 6-pack	
	ASD-LDS-4D1030-BZ 6-pack		ASD-LDS-6D1530-NK 6-pack	
	ASD-LDS-4D1040-BZ 6-pack		ASD-LDS-6D1540-NK 6-pack	
	ASD-LDS-4D1050-BZ 6-pack		ASD-LDS-6D1550-NK 6-pack	
	ASD-LDS-4D1030-NK 6-pack		ASD-LDS-6D1530-WH 6-pack	
	ASD-LDS-4D1040-NK 6-pack		ASD-LDS-6D1540-WH 6-pack	
	ASD-LDS-4D1050-NK 6-pack		ASD-LDS-6D1550-WH 6-pack	
Inrush current (Action time)	0.2 A (0.01 S)			
AC input range	min 100 V max 135 V			
Off State Power	0 W			
Power Consumption	ASD-LDS-4D1030-WH 6-pack	10 W	ASD-LDS-6D1530-BZ 6-pack	15 W
	ASD-LDS-4D1040-WH 6-pack		ASD-LDS-6D1540-BZ 6-pack	
	ASD-LDS-4D1050-WH 6-pack		ASD-LDS-6D1550-BZ 6-pack	
	ASD-LDS-4D1030-BZ 6-pack		ASD-LDS-6D1530-NK 6-pack	
	ASD-LDS-4D1040-BZ 6-pack		ASD-LDS-6D1540-NK 6-pack	
	ASD-LDS-4D1050-BZ 6-pack		ASD-LDS-6D1550-NK 6-pack	
	ASD-LDS-4D1030-NK 6-pack		ASD-LDS-6D1530-WH 6-pack	
	ASD-LDS-4D1040-NK 6-pack		ASD-LDS-6D1540-WH 6-pack	
	ASD-LDS-4D1050-NK 6-pack		ASD-LDS-6D1550-WH 6-pack	
Power Factor	> 0.9			

For most up-to-date spec sheets please refer to [asd-lighting.com](http://asd-lighting.com)

ASD LIGHTING CORP

E-mail: [orders@asd-lighting.com](mailto:orders@asd-lighting.com) | Web site: [www.asd-lighting.com](http://www.asd-lighting.com)





# LED Disk Light

LDS series

Electrical System				
Output voltage	132 V			
Max output current	ASD-LDS-4D1030-WH 6-pack	67 mA	ASD-LDS-6D1530-BZ 6-pack	100 mA
	ASD-LDS-4D1040-WH 6-pack		ASD-LDS-6D1540-BZ 6-pack	
	ASD-LDS-4D1050-WH 6-pack		ASD-LDS-6D1550-BZ 6-pack	
	ASD-LDS-4D1030-BZ 6-pack		ASD-LDS-6D1530-NK 6-pack	
	ASD-LDS-4D1040-BZ 6-pack		ASD-LDS-6D1540-NK 6-pack	
	ASD-LDS-4D1050-BZ 6-pack		ASD-LDS-6D1550-NK 6-pack	
	ASD-LDS-4D1030-NK 6-pack		ASD-LDS-6D1530-WH 6-pack	
	ASD-LDS-4D1040-NK 6-pack		ASD-LDS-6D1540-WH 6-pack	
	ASD-LDS-4D1050-NK 6-pack		ASD-LDS-6D1550-WH 6-pack	
LED Driver Class	DOB			
Regular and Voluntary Certifications				
5-year limited warranty				
ETL certified 4008281				
Energy Star listed				

## DIMMING COMPATIBLE CONTROLS:

MFG	Model Number				
Lutron	DVCL-153P-WH	DVLV-603P-IV	S-600P	CT-603PG	DVW-603PGH-WH
	MACL-153M-WH	CTCL-153PDH	S-603P	DV-600P	SLV-600P-WH
Leviton	6672	1F4205	1E1205	6674	6631
	0B33K1	6633-P			

## INSTALLATION GUIDE

### IMPORTANT SAFETY INFORMATION:

Please read all the instructions below before installation.

- ▶ Make sure that the supply voltage corresponds to the rated product voltage.
- ▶ The product must be installed by a qualified electrician in accordance with the National Electrical Code and corresponding local codes.
- ▶ If the product is damaged, do not use it.

### ⚠ WARNING

**RISK OF PERSONAL INJURY – READ and follow all WARNINGS and installation instructions.**

Keep or give to the owner for future reference.

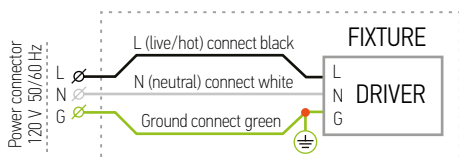
**Risk of cuts:** Wear gloves to prevent cuts or abrasions when removing from carton, handling, installing, and maintaining this product.

**Risk of electric shock:** This product must be installed in accordance with the applicable installation code by a person familiar with the construction and operation of the product and the hazards involved.

**Risk of Fire:** Minimum 194°F supply conductors. Consult a qualified electrician to ensure correct branch circuit conductor.

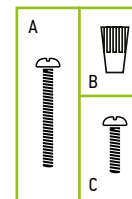
ASD® assumes no responsibility for claims arising out of improper or careless installation or handling of this product.

### ELECTRICAL SCHEMATIC DIAGRAM:

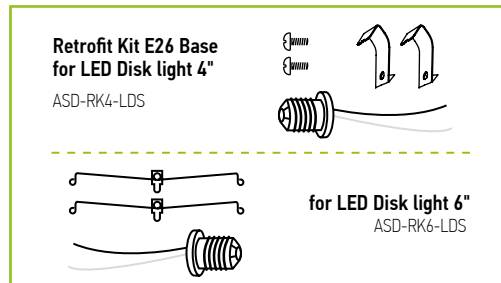


### PACKAGE CONTENTS:

Description	Q-ty
LED Disk Light Fixture	1
1-1/2 in. machine screws (A)	2
Wire Nuts (B)	3
1/2 in. machine screws (C)	2
Box	1
Installation Instructions	3



### ACCESSORIES (sold separately):



For most up-to-date spec sheets please refer to [asd-lighting.com](http://asd-lighting.com)

ASD LIGHTING CORP

E-mail: [orders@asd-lighting.com](mailto:orders@asd-lighting.com) | Web site: [www.asd-lighting.com](http://www.asd-lighting.com)



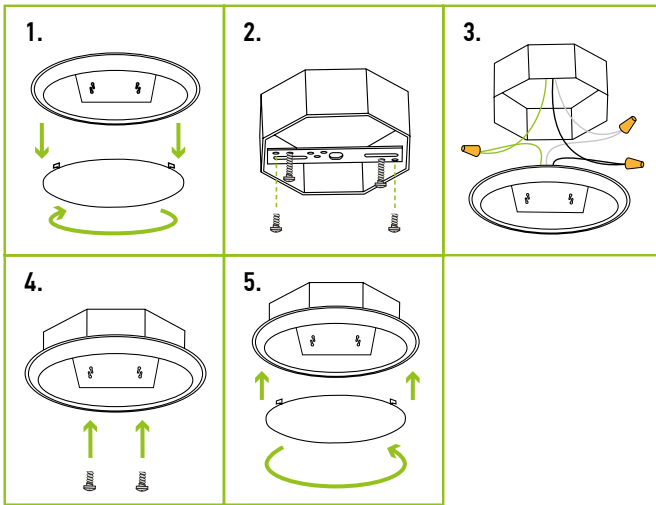


# LED Disk Light

LDS series

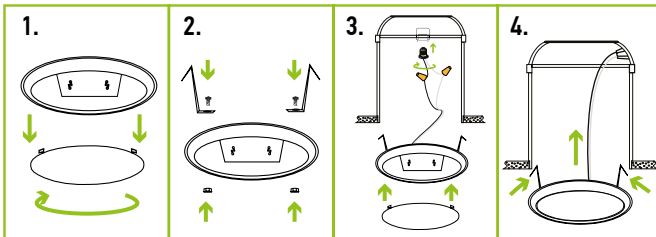
## INSTALLATION STEPS DISK LIGHT 4"

1. Turn off the main power and remove the existing fixture. Remove the cover by turning it counter clockwise.
2. Screw the mounting crossbar on the junction box.
3. Connect the fixture wires as shown on picture #3 and secure the connection using wire nuts.
4. Carefully route wires into the J-box and align two holes in the fixture with J-box mounting cross bar. Use screws to attach one to another. Do not over tighten.
5. Complete the installation by placing the lens back and turning it clockwise.



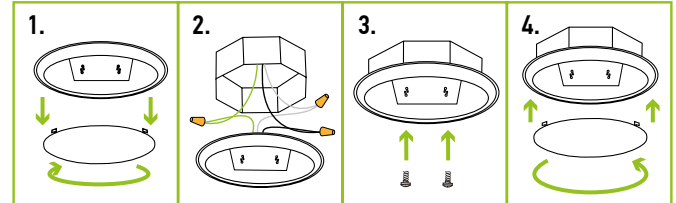
## RETROFIT-KIT 4" ASD-RK4-LDS (sold separately)

1. Turn off the main power and remove the existing fixture. Remove the cover by turning it counter clockwise.
2. Attach remodeled clips as shown on picture #2. Secure with screws and nut.
3. Connect the wires from E26 Adapter with fixture wires as shown on picture #3. Secure the connection using wire nuts. Thread the E26 Adapter into the socket of the recessed Can. Carefully route wires, and push fixture up to ceiling surface.
4. Complete the installation by placing the lens back and turning it clockwise.



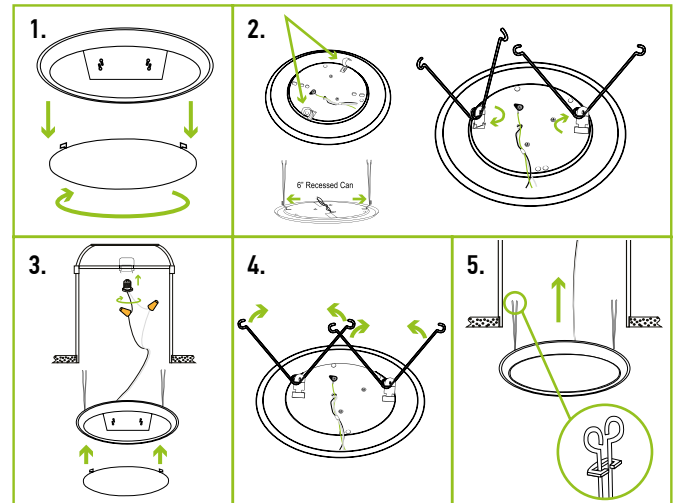
## INSTALLATION STEPS DISK LIGHT 6"

1. Turn off the main power and remove the existing fixture. Remove the cover by turning it counter clockwise.
2. Connect the fixture wires as shown on picture #3 and secure the connection using wire nuts.
3. Carefully route wires into the J-box and align two holes in the fixture with J-box mounting cross bar. Use screws to attach one to another. Do not over tighten.
4. Complete the installation by placing the lens back and turning it clockwise.



## RETROFIT-KIT 6" ASD-RK6-LDS (sold separately)

1. Turn off the main power and remove the existing fixture. Remove the cover by turning it counter clockwise.
2. Place the spring clips arms into the rectangular slots and twist them in a locked position. The spring clips must be adjusted depending on the can size.
3. Connect the wires from E26 Adapter with fixture wires. Secure the connection using wire nuts.
4. Thread the E26 Adapter into the socket of the recessed Can. Squeeze the two sets of spring clip arms up towards each other.
5. Carefully route wires into the Can, and hook both sets of spring clip arms into the arm hooks on the inside wall of the Can. Release spring clip arms and gently push the Disk Light up into the Can until flush against the ceiling surface. Complete the installation by placing the lens back and turning it clockwise.



For most up-to-date spec sheets please refer to [asd-lighting.com](http://asd-lighting.com)



# LED Disk Light

LDS series

## ORDERING INFORMATION

### LED DISK LIGHT:

Model	Watts	CCT	Pcs in Individual Box	Individual Box Size	Individual Box Weight	UPC		
ASD-LDS-4D1030-WH 6-pack	10 W	3,000 K	6	6.9" x 7" x 6.9"	2.43 lb	819201028023		
ASD-LDS-4D1040-WH 6-pack	10 W	4,000 K	6	6.9" x 7" x 6.9"	2.43 lb	819201028030		
ASD-LDS-4D1050-WH 6-pack	10 W	5,000 K	6	6.9" x 7" x 6.9"	2.43 lb	819201028047		
ASD-LDS-4D1030-BZ 6-pack	10 W	3,000 K	6	6.9" x 7" x 6.9"	2.43 lb	819201028054		
ASD-LDS-4D1040-BZ 6-pack	10 W	4,000 K	6	6.9" x 7" x 6.9"	2.43 lb	819201028061		
ASD-LDS-4D1050-BZ 6-pack	10 W	5,000 K	6	6.9" x 7" x 6.9"	2.43 lb	819201028078		
ASD-LDS-4D1030-NK 6-pack	10 W	3,000 K	6	6.9" x 7" x 6.9"	2.43 lb	859961005544		
ASD-LDS-4D1040-NK 6-pack	10 W	4,000 K	6	6.9" x 7" x 6.9"	2.43 lb	810050730006		
ASD-LDS-4D1050-NK 6-pack	10 W	5,000 K	6	6.9" x 7" x 6.9"	2.43 lb	810050730013		
ASD-LDS-6D1530-WH 6-pack	15 W	3,000 K	6	8" x 7" x 8.3"	4.4 lb	819201028085		
ASD-LDS-6D1540-WH 6-pack	15 W	4,000 K	6	8" x 7" x 8.3"	4.4 lb	819201028092		
ASD-LDS-6D1550-WH 6-pack	15 W	5,000 K	6	8" x 7" x 8.3"	4.4 lb	819201028108		
ASD-LDS-6D1530-BZ 6-pack	15 W	3,000 K	6	8" x 7" x 8.3"	4.4 lb	819201028115		
ASD-LDS-6D1540-BZ 6-pack	15 W	4,000 K	6	8" x 7" x 8.3"	4.4 lb	819201028122		
ASD-LDS-6D1550-BZ 6-pack	15 W	5,000 K	6	8" x 7" x 8.3"	4.4 lb	819201028146		
ASD-LDS-6D1530-NK 6-pack	15 W	3,000 K	6	8" x 7" x 8.3"	4.4 lb	810050730020		
ASD-LDS-6D1540-NK 6-pack	15 W	4,000 K	6	8" x 7" x 8.3"	4.4 lb	810050730037		
ASD-LDS-6D1550-NK 6-pack	15 W	5,000 K	6	8" x 7" x 8.3"	4.4 lb	810050730044		
Model	Pcs in Middle Box	Middle Box Size	Middle Box Weight	GTIN 14 Middle box	Pcs in one Carton	Carton Size	Carton Weight	GTIN 14 Carton
ASD-LDS-4D1030-WH 6-pack	12	14.2" x 7.4" x 7.3"	5.29 lb	10819201028020	24	15.6" x 14.8" x 8.1"	11.7 lb	20819201028027
ASD-LDS-4D1040-WH 6-pack	12	14.2" x 7.4" x 7.3"	5.29 lb	10819201028037	24	15.6" x 14.8" x 8.1"	11.7 lb	20819201028034
ASD-LDS-4D1050-WH 6-pack	12	14.2" x 7.4" x 7.3"	5.29 lb	10819201028044	24	15.6" x 14.8" x 8.1"	11.7 lb	20819201028041
ASD-LDS-4D1030-BZ 6-pack	12	14.2" x 7.4" x 7.3"	5.29 lb	10819201028051	24	15.6" x 14.8" x 8.1"	11.7 lb	20819201028058
ASD-LDS-4D1040-BZ 6-pack	12	14.2" x 7.4" x 7.3"	5.29 lb	10819201028068	24	15.6" x 14.8" x 8.1"	11.7 lb	20819201028065
ASD-LDS-4D1050-BZ 6-pack	12	14.2" x 7.4" x 7.3"	5.29 lb	10819201028075	24	15.6" x 14.8" x 8.1"	11.7 lb	20819201028072
ASD-LDS-4D1030-NK 6-pack	12	14.2" x 7.4" x 7.3"	5.29 lb	10859961005541	24	15.6" x 14.8" x 8.1"	11.7 lb	20859961005548
ASD-LDS-4D1040-NK 6-pack	12	14.2" x 7.4" x 7.3"	5.29 lb	10810050730003	24	15.6" x 14.8" x 8.1"	11.7 lb	20810050730000
ASD-LDS-4D1050-NK 6-pack	12	14.2" x 7.4" x 7.3"	5.29 lb	10810050730010	24	15.6" x 14.8" x 8.1"	11.7 lb	20810050730017
ASD-LDS-6D1530-WH 6-pack	12	14.4" x 8.4" x 8.7"	9.48 lb	10819201028082	24	17.6" x 15" x 9.4"	19.84 lb	20819201028089
ASD-LDS-6D1540-WH 6-pack	12	14.4" x 8.4" x 8.7"	9.48 lb	10819201028099	24	17.6" x 15" x 9.4"	19.84 lb	20819201028096
ASD-LDS-6D1550-WH 6-pack	12	14.4" x 8.4" x 8.7"	9.48 lb	10819201028105	24	17.6" x 15" x 9.4"	19.84 lb	20819201028102
ASD-LDS-6D1530-BZ 6-pack	12	14.4" x 8.4" x 8.7"	9.48 lb	10819201028112	24	17.6" x 15" x 9.4"	19.84 lb	20819201028119
ASD-LDS-6D1540-BZ 6-pack	12	14.4" x 8.4" x 8.7"	9.48 lb	10819201028129	24	17.6" x 15" x 9.4"	19.84 lb	20819201028126
ASD-LDS-6D1550-BZ 6-pack	12	14.4" x 8.4" x 8.7"	9.48 lb	10819201028143	24	17.6" x 15" x 9.4"	19.84 lb	20819201028140
ASD-LDS-6D1530-NK 6-pack	12	14.4" x 8.4" x 8.7"	9.48 lb	10810050730027	24	17.6" x 15" x 9.4"	19.84 lb	20810050730024
ASD-LDS-6D1540-NK 6-pack	12	14.4" x 8.4" x 8.7"	9.48 lb	10810050730034	24	17.6" x 15" x 9.4"	19.84 lb	20810050730031
ASD-LDS-6D1550-NK 6-pack	12	14.4" x 8.4" x 8.7"	9.48 lb	10810050730041	24	17.6" x 15" x 9.4"	19.84 lb	20810050730048

### ACCESSORIES:

Model	Name	Weight	UPC					
ASD-RK4-LDS	Retrofit Kit E26 Base for LED Disk light 4"	0.1 lb	810050730105					
ASD-RK6-LDS	Retrofit Kit E26 Base for LED Disk light 6"	0.1 lb	810050730112					
Model	Pcs in Middle Box	Middle Box Size	Middle Box Weight	GTIN 14 Middle box	Pcs in one Carton	Carton Size	Carton Weight	GTIN 14 Carton
ASD-RK4-LDS	12	5.4" x 3.5" x 5.4"	1 lb	10810050730102	78	11.4" x 11.4" x 6.3"	6.8 lb	20810050730109
ASD-RK6-LDS	12	7.5" x 3.5" x 7.5"	1.2 lb	10810050730119	48	15.7" x 7.5" x 8.3"	5.5 lb	20810050730116

For most up-to-date spec sheets please refer to [asd-lighting.com](http://asd-lighting.com)

ASD LIGHTING CORP

E-mail: [orders@asd-lighting.com](mailto:orders@asd-lighting.com) | Web site: [www.asd-lighting.com](http://www.asd-lighting.com)

