

NUVO LIGHTING

Inspirations 2019







NUVO[®]
L I G H T I N G

Nuvo 2019 explores design that cultivates the imagination.

Large blown glass with oceanic influences and contrary combinations like natural brass and weathered wood enliven today's trending styles.

New "retro" designs give a nod to mid-century modernism and sassy shapes echo the sophisticated fun of the Gatsby Gold Coast.

Light sets the mood and creates the tone in a room. It acts as an invitation and a path. Nuvo creates fixtures that appreciate the intention of light.

Nuvo...Inspired by Light.

FATHOM

Vintage Brass, Mahogany Bronze or Polished Nickel / Clear Glass



60-6911



60-6912



60-6921



60-6922



60-6931



60-6932

Item#	Description	Finish	No. of Lights	Lamp Type	Base	Max Watts	Length	Width	Height	Ext.	Cert. Type
60-6911	Mini Pendant	Vintage Brass	1	T9	Med.	60W	•	6"	14 ¾"	•	Dry
60-6912	2 Lt. Pendant	Vintage Brass	2	T9	Med.	60W	•	6 ¼"	18 ¾"	•	Dry
60-6913	3 Lt. Pendant	Vintage Brass	3	T9	Med.	60W	•	8"	23"	•	Dry
60-6921	Mini Pendant	Mahogany Bronze	1	T9	Med.	60W	•	6"	14 ¾"	•	Dry
60-6922	2 Lt. Pendant	Mahogany Bronze	2	T9	Med.	60W	•	6 ¼"	18 ¾"	•	Dry
60-6923	3 Lt. Pendant	Mahogany Bronze	3	T9	Med.	60W	•	8"	23"	•	Dry
60-6931	Mini Pendant	Polished Nickel	1	T9	Med.	60W	•	6"	14 ¾"	•	Dry
60-6932	2 Lt. Pendant	Polished Nickel	2	T9	Med.	60W	•	6 ¼"	18 ¾"	•	Dry
60-6933	3 Lt. Pendant	Polished Nickel	3	T9	Med.	60W	•	8"	23"	•	Dry

Additional chain (Polished Nickel): (3') 25-490, Additional chain (Vintage Brass): (3') 25-484, Additional chain (Mahogany Bronze): (3') 25-489. Pendants include 12' of wire and 4' of chain.



60-6913



60-6923



60-6933

ODYSSEY

Vintage Brass or Polished Nickel / Clear Glass



60-6942



60-6943



60-6941

Item#	Description	Finish	No. of Lights	Lamp Type	Base	Max Watts	Length	Width	Height	Ext.	Cert. Type
60-6941	1 Lt. Pendant	Vintage Brass	1	A19	Med.	60W	•	10 1/2"	17 3/4"	•	Dry
60-6942	3 Lt. Pendant	Vintage Brass	3	B9	Cand.	60W	•	15"	24 3/4"	•	Dry
60-6943	4 Lt. Pendant	Vintage Brass	4	B9	Cand.	60W	•	18 1/2"	33"	•	Dry
60-6951	1 Lt. Pendant	Polished Nickel	1	A19	Med.	60W	•	10 1/2"	17 3/4"	•	Dry
60-6952	3 Lt. Pendant	Polished Nickel	3	B9	Cand.	60W	•	15"	24 3/4"	•	Dry
60-6953	4 Lt. Pendant	Polished Nickel	4	B9	Cand.	60W	•	18 1/2"	33"	•	Dry

Additional chain (Polished Nickel): (3') 25-490, Additional chain (Vintage Brass): (3') 25-484
Pendants include 12' of wire and 4' of chain.



60-6951



60-6953



60-6952

Item#	Description	Finish	No. of Lights	Lamp Type	Base	Max Watts	Length	Width	Height	Ext.	Cert. Type
60-6671	1 Lt. Pendant	Burnished Brass	1	A19	Med.	100W	•	9 7/8"	17 5/8"	•	Dry
60-6672	1 Lt. Pendant	Polished Nickel	1	A19	Med.	100W	•	9 7/8"	17 5/8"	•	Dry
60-6673	1 Lt. Pendant	Aged Bronze	1	A19	Med.	100W	•	9 7/8"	17 5/8"	•	Dry

Additional chain (Burnished Brass): (3') 25-467, Additional chain (Polished Nickel): (3') 25-4141
 Additional chain (Aged Bronze): (3') 25-4058, Pendants include 12' of wire and 4' of chain.

SKYLOFT

Burnished Brass, Polished Nickel or Aged Bronze / Clear Glass



60-6671



60-6672



60-6673

Item#	Description	Finish	No. of Lights	Lamp Type	Base	Max Watts	Length	Width	Height	Ext.	Cert. Type
60-6741	3 Lt. Pendant	Antique Copper	3	T9	Cand.	60W	•	13"	14 3/8"	•	Dry
60-6742	3 Lt. Pendant	Matte Black	3	T9	Cand.	60W	•	13"	14 3/8"	•	Dry

Additional Stems (Antique Copper): (6") 25-463, (12") 25-464, Additional Stems (Matte Black): (6") 25-465, (12") 25-466
Pendants include 12' of wire.

ARIEL

Antique Copper or Matte Black / Clear Seeded Glass



60-6741



60-6742

Item#	Description	Finish	No. of Lights	Lamp Type	Base	Max Watts	Length	Width	Height	Ext.	Cert. Type
60-6761	1 Lt. Pendant	Burnished Brass	1	A19	Med.	100W	•	11"	17 3/8"	•	Dry
60-6762	1 Lt. Pendant	Polished Nickel	1	A19	Med.	100W	•	11"	17 3/8"	•	Dry

Pendants include 12' of cord.

BALLARAT

Burnished Brass or Polished Nickel / Clear Glass



60-6761



60-6762

Item#	Description	Finish	No. of Lights	Lamp Type	Base	Max Watts	Length	Width	Height	Ext.	Cert. Type
60-6768	1 Lt. Pendant	Burnished Brass	1	A19	Med.	100W	•	15 ¾"	13"	•	Dry
60-6769	1 Lt. Pendant	Polished Nickel	1	A19	Med.	100W	•	15 ¾"	13"	•	Dry

Additional Stems (Burnished Brass): (6") 25-468, (12") 25-469,
 Additional Stems (Polished Nickel): (6") 25-4118, (12") 25-4119. Pendants include 12' of wire.

STORRIER

Burnished Brass or Polished Nickel / Clear Glass



60-6768



60-6769

Item#	Description	Finish	No. of Lights	Lamp Type	Base	Max Watts	Length	Width	Height	Ext.	Cert. Type
60-6757	1 Lt. Pendant	Burnished Brass	1	A19	Med.	100W	•	13 ¾"	14 ⅝"	•	Dry
60-6758	1 Lt. Pendant	Polished Nickel	1	A19	Med.	100W	•	13 ¾"	14 ⅝"	•	Dry
60-6759	1 Lt. Pendant	Matte Black	1	A19	Med.	100W	•	13 ¾"	14 ⅝"	•	Dry

Additional Stems (Burnished Brass): (6") 25-468, (12") 25-469, Additional Stems (Polished Nickel): (6") 25-4118, (12") 25-4119
 Additional Stems (Matte Black): (6") 25-465, (12") 25-466. Pendants include 12' of wire.

BASEL

Burnished Brass, Polished Nickel or Aged Bronze / Clear Glass



60-6757



60-6758



60-6759

Item#	Description	Finish	No. of Lights	Lamp Type	Base	Max Watts	Length	Width	Height	Ext.	Cert. Type
60-6697	1 Lt. Pendant	Burnished Brass	1	A19	Med.	100W	•	10 1/2"	13"	•	Dry
60-6698	1 Lt. Pendant	Polished Nickel	1	A19	Med.	100W	•	10 1/2"	13"	•	Dry
60-6699	1 Lt. Pendant	Matte Black	1	A19	Med.	100W	•	10 1/2"	13"	•	Dry

Additional Stems (Burnished Brass): (6") 25-468, (12") 25-469, Additional Stems (Polished Nickel): (6") 25-4118, (12") 25-4119
 Additional Stems (Aged Bronze): (6") 25-465, (12") 25-466. Pendants include 12' of wire.

BRUGE

Burnished Brass, Polished Nickel or Aged Bronze / Clear Glass



60-6697



60-6698



60-6699

Item#	Description	Finish	No. of Lights	Lamp Type	Base	Max Watts	Length	Width	Height	Ext.	Cert. Type
60-6748	1 Lt. Pendant	Antique Copper	1	A19	Med.	100W	•	6 1/2"	14 3/8"	•	Dry
60-6749	1 Lt. Pendant	Matte Black	1	A19	Med.	100W	•	6 1/2"	14 3/8"	•	Dry

Additional chain (Antique Copper): (3') 25-470, Additional chain (Matte Black): (3') 25-475
Pendants include 12' of wire and 4' of chain.

HARTLEY

Antique Copper or Matte Black / Clear Glass



60-6748



60-6749

Item#	Description	Finish	No. of Lights	Lamp Type	Base	Max Watts	Length	Width	Height	Ext.	Cert. Type
60-6797	1 Lt. Flush	Burnished Brass	1	A19	Med.	60W	•	10 3/8"	10"	•	Dry
60-6798	1 Lt. Flush	Polished Nickel	1	A19	Med.	60W	•	10 3/8"	10"	•	Dry
60-6799	1 Lt. Flush	Aged Bronze	1	A19	Med.	60W	•	10 3/8"	10"	•	Dry
60-6778	1 Lt. Flush	Polished Nickel	1	A19	Med.	60W	•	9 7/8"	11 3/8"	•	Dry
60-6779	1 Lt. Flush	Matte Black	1	A19	Med.	60W	•	9 7/8"	11 3/8"	•	Dry

KEW

Burnished Brass, Polished Nickel or Aged Bronze / Clear Glass

CHANTECLEER

Polished Nickel or Matte Black / Clear Glass



60-6797



60-6778



60-6798



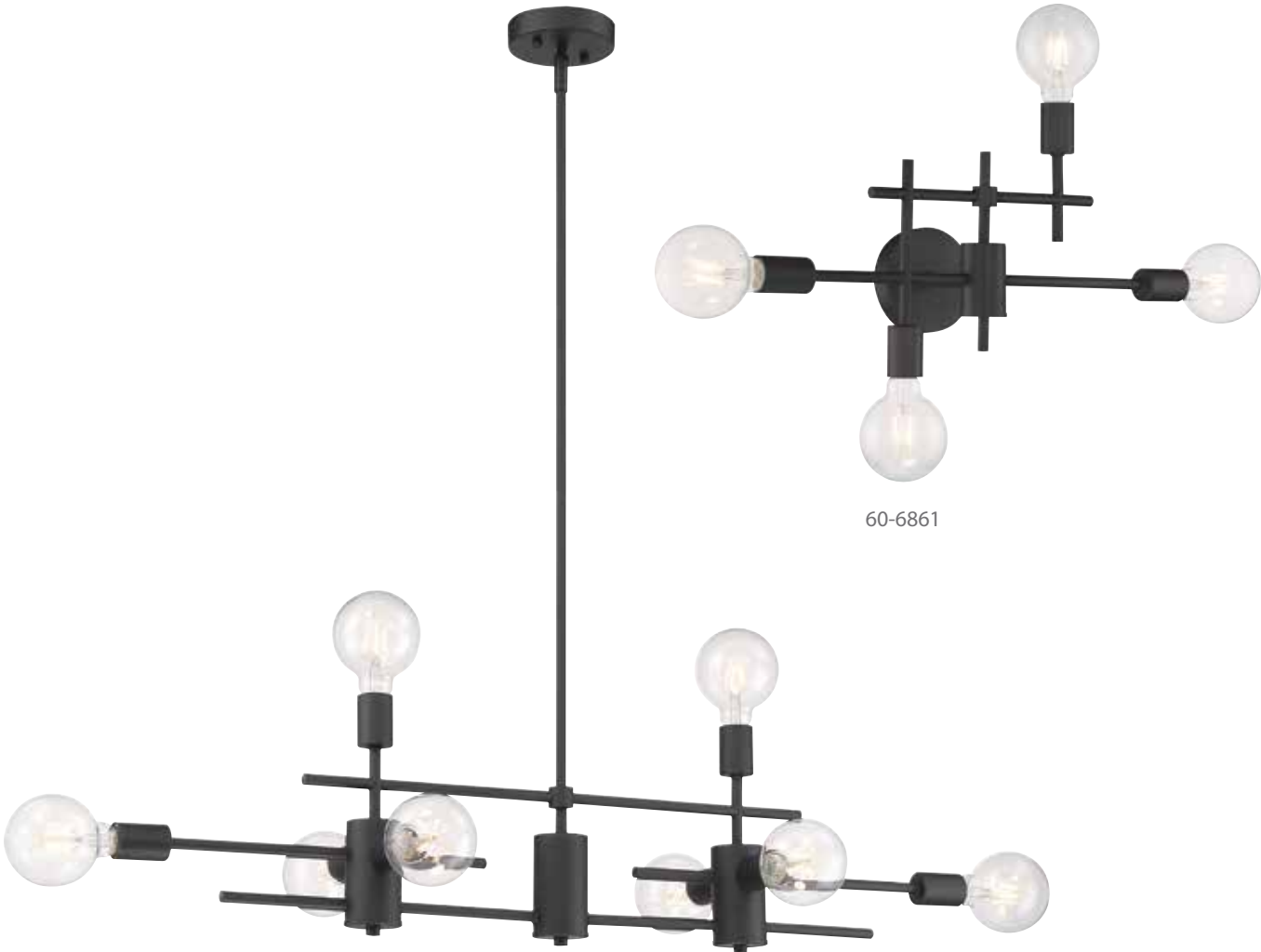
60-6799



60-6779

DELPHI

Matte Black or Aged Gold

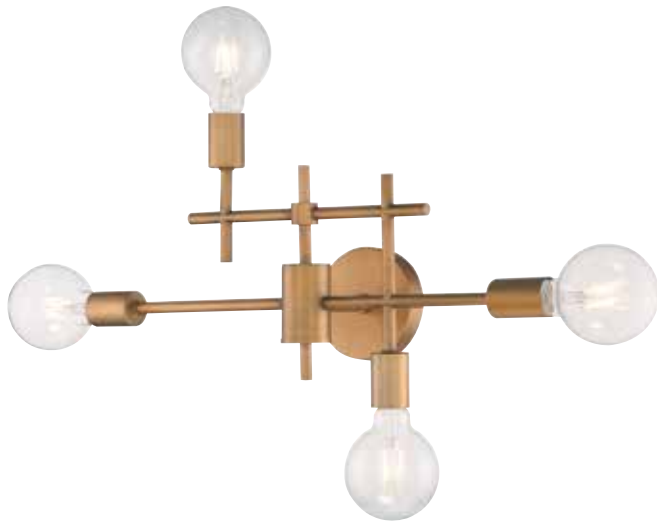


60-6861

60-6862

Item#	Description	Finish	No. of Lights	Lamp Type	Base	Max Watts	Length	Width	Height	Ext.	Cert. Type
60-6861	4 Lt. Vanity	Matte Black	4	G25	Med.	60W	•	22 ½"	13 ¼"	6"	Damp
60-6862	8 Lt. Island Pendant	Matte Black	8	G25	Med.	60W	45"	7"	19"	•	Dry
60-6871	4 Lt. Vanity	Aged Gold	4	G25	Med.	60W	•	22 ½"	13 ¼"	6"	Damp
60-6872	8 Lt. Island Pendant	Aged Gold	8	G25	Med.	60W	45"	7"	19"	•	Dry

Additional Stems (Aged Gold): (6") 25-487, (12") 25-488, Additional Stems (Black): (6") 25-485, (12") 25-486.
Pendant includes 12' of wire.



60-6871



60-6872

INTENTION

Warm Brass and Black



60-6976



60-6975



60-6977

Item#	Description	Finish	No. of Lights	Lamp Type	Base	Max Watts	Length	Width	Height	Ext.	Cert. Type
60-6971	1 Lt. Vanity	Warm Brass / Black	1	G25	Med.	60W	•	4 ½"	6 ½"	5 ¼"	Damp
60-6972	2 Lt. Vanity	Warm Brass / Black	2	G25	Med.	60W	•	12 ¼"	5 ½"	5 ¾"	Damp
60-6973	3 Lt. Vanity	Warm Brass / Black	3	G25	Med.	60W	•	17"	5 ½"	7"	Damp
60-6974	4 Lt. Vanity	Warm Brass / Black	4	G25	Med.	60W	•	21 ¾"	5 ½"	7"	Damp
60-6975	Mini Pendant	Warm Brass / Black	1	G25	Med.	60W	•	2 ¾"	5 ½"	•	Dry
60-6976	6 Lt. Chandelier	Warm Brass / Black	6	G25	Med.	60W	23 ½"	23 ½"	6"	•	Dry
60-6977	6 Lt. Island Pendant	Warm Brass / Black	6	G25	Med.	60W	32 ½"	11 ½"	5 ½"	•	Dry

Additional Stems: (6") 25-485, (12") 25-486
Chandelier and Pendants include 12' of wire.



60-6971



60-6972



60-6973



60-6974

Item#	Description	Finish	No. of Lights	Lamp Type	Base	Max Watts	Length	Width	Height	Ext.	Cert. Type
60-6915	8 Lt. Pendant	Black	8	A19	Med.	60W	30 1/8"	30 1/8"	14 1/4"	•	Dry
60-6916	6 Lt. Semi Flush†	Black	6	A19	Med.	60W	16 1/2"	16 1/2"	13 7/8"	•	Dry
60-6925	8 Lt. Pendant	Brushed Brass	8	A19	Med.	60W	30 1/8"	30 1/8"	14 1/4"	•	Dry
60-6926	6 Lt. Semi Flush†	Brushed Brass	6	A19	Med.	60W	16 1/2"	16 1/2"	13 7/8"	•	Dry

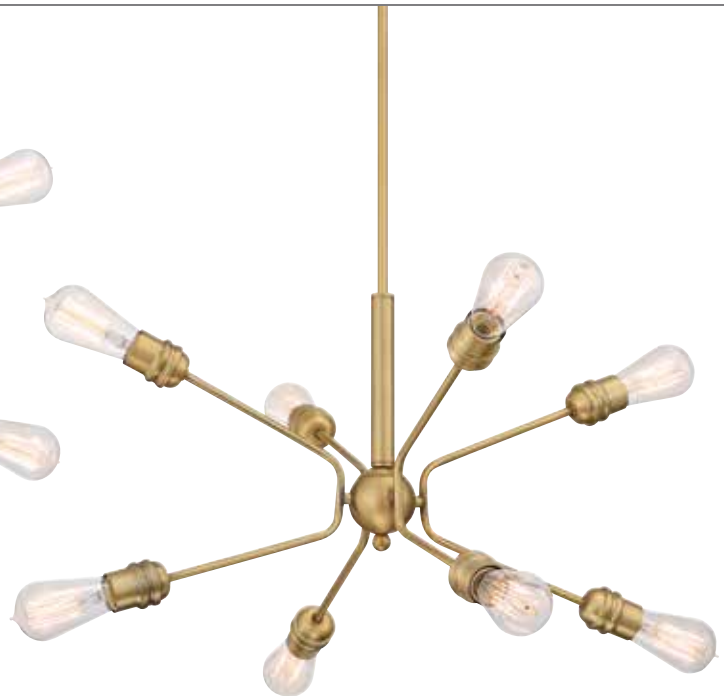
†Pendant conversion kit for semi flush (Black): 25-485, Additional Stems (Black): (6") 25-479, (12") 25-480.
†Pendant conversion kit for semi flush (Brushed Brass): 25-484, Additional Stems (Brushed Brass): (6") 25-477, (12") 25-478.
Semi Flush and pendants include 12' of wire.

FARADAY

Black or Brushed Brass



60-6915



60-6925



60-6916



60-6926

Item#	Description	Finish	No. of Lights	Lamp Type	Base	Max Watts	Length	Width	Height	Ext.	Cert. Type
60-6990	4 Lt. Pendant	Black / Brushed Brass	4	A19*	Med.	100W	31 1/2"	5"	16"	•	Dry
							Additional Stems: (6") 25-479, (12") 25-480. Pendant includes 12' of wire.				

MANTRA

Black and Brushed Brass



Item#	Description	Finish	No. of Lights	Lamp Type	Base	Max Watts	Length	Width	Height	Ext.	Cert. Type
60-6611	Sconce	Matte Black / Copper Brushed Brass	1	T9	Med.	60W	•	5"	18 ¾"	5 ⅞"	Dry
60-6612	Pendant	Matte Black / Copper Brushed Brass	1	T9	Med.	60W	•	5"	11 ⅞"	•	Dry
60-6711	Sconce	Copper Brushed Brass	1	T9	Med.	60W	•	5"	18 ¾"	5 ⅞"	Dry
60-6712	1 Lt. Pendant	Copper Brushed Brass	1	T9	Med.	60W	•	5"	11 ⅞"	•	Dry

Pendants and sconces include 12' of cord.

EAVES

Matte Black Cage / Copper Brushed Brass or Copper Brushed Brass with Ribbed Glass



60-6611



60-6612



60-6711

60-6712

Item#	Description	Finish	No. of Lights	Lamp Type	Base	Max Watts	Length	Width	Height	Ext.	Cert. Type
60-6851	1 Lt. Sconce	Black / Vintage Brass	1	T14	Med.	60W	•	5"	21 ¼"	6 ½"	Dry
60-6852	Mini Pendant	Black / Vintage Brass	1	T14	Med.	60W	•	4 ¾"	10 ¾"	•	Dry
60-6853	3 Lt. Pendant	Black / Vintage Brass	3	T14	Med.	60W	•	12 ½"	10 ¾"	•	Dry

Fixtures include 12' of Cord.

TOLEO

Black and Vintage Brass / Clear Glass



60-6851



60-6852



60-6853

SLOAN

Matte Black with Polished Nickel Shades, Matte Black with Burnished Brass Shades, Matte Black with Matte White Shades or Polished Nickel with Matte White Shades



60-6772



60-6773



60-6771



60-6785



60-6786



60-6784

Item#	Description	Finish	No. of Lights	Lamp Type	Base	Max Watts	Length	Width	Height	Ext.	Cert. Type
60-6771	1 Lt. Vanity	Matte Black / Polished Nickel	1	A19	Med.	100W	•	5 7/8"	10 3/8"	6 5/8"	Damp
60-6772	2 Lt. Vanity	Matte Black / Polished Nickel	2	A19	Med.	100W	•	13 3/4"	10 3/8"	6 5/8"	Damp
60-6773	3 Lt. Vanity	Matte Black / Polished Nickel	3	A19	Med.	100W	•	21 5/8"	10 3/8"	6 5/8"	Damp
60-6781	1 Lt. Vanity	Polished Nickel / Matte White	1	A19	Med.	100W	•	5 7/8"	10 3/8"	6 5/8"	Damp
60-6782	2 Lt. Vanity	Polished Nickel / Matte White	2	A19	Med.	100W	•	13 3/4"	10 3/8"	6 5/8"	Damp
60-6783	3 Lt. Vanity	Polished Nickel / Matte White	3	A19	Med.	100W	•	21 5/8"	10 3/8"	6 5/8"	Damp
60-6784	1 Lt. Vanity	Matte Black / Matte White	1	A19	Med.	100W	•	5 7/8"	10 3/8"	6 5/8"	Damp
60-6785	2 Lt. Vanity	Matte Black / Matte White	2	A19	Med.	100W	•	13 3/4"	10 3/8"	6 5/8"	Damp
60-6786	3 Lt. Vanity	Matte Black / Matte White	3	A19	Med.	100W	•	21 5/8"	10 3/8"	6 5/8"	Damp
60-6791	1 Lt. Vanity	Matte Black / Burnished Brass	1	A19	Med.	100W	•	5 7/8"	10 3/8"	6 5/8"	Damp
60-6792	2 Lt. Vanity	Matte Black / Burnished Brass	2	A19	Med.	100W	•	13 3/4"	10 3/8"	6 5/8"	Damp
60-6793	3 Lt. Vanity	Matte Black / Burnished Brass	3	A19	Med.	100W	•	21 5/8"	10 3/8"	6 5/8"	Damp



60-6781



60-6783



60-6782



60-6791



60-6793



60-6792

BETTE LED

Polished Nickel / Black Metal Shades



62-1476



62-1475



62-1471

Item#	Description	Finish	Light Source	Watts	Incand. Equiv.	Length	Width	Height	Ext.	CCT	Lumens	CRI	Cert. Type
62-1471	Sconce	Polished Nickel	LED	12	60W	•	5"	6 ¾"	6 ½"	3000K	1,020*	90	Damp
62-1472	2 Lt. Vanity	Polished Nickel	LED	24	2x60W	•	16"	6 ¾"	6 ½"	3000K	2,040*	90	Damp
62-1473	3 Lt. Vanity	Polished Nickel	LED	36	3x60W	•	24"	6 ¾"	6 ½"	3000K	3,060*	90	Damp
62-1474	4 Lt. Vanity	Polished Nickel	LED	48	4x60W	•	32"	6 ¾"	6 ½"	3000K	4,080*	90	Damp
62-1475	Mini Pendant	Polished Nickel	LED	18	60W	•	10 ¾"	6 ¼"	•	3000K	1,020*	90	Dry
62-1476	Pendant	Polished Nickel	LED	25	100W	•	16 ¾"	6 7/8"	•	3000K	1,500*	90	Dry

*Lumens measured at LED source.

Additional Stems: (6") 25-2062, (12") 25-2061



62-1472



62-1473



62-1474

Item#	Description	Finish	No. of Lights	Lamp Type	Base	Max Watts	Length	Width	Height	Ext.	Cert. Type
60-6788	1 Lt. Sconce	Polished Nickel	1	T9	Med.	100W	•	4 1/2"	12"	4 7/8"	Damp
60-6789	1 Lt. Sconce	Aged Bronze	1	T9	Med.	100W	•	4 1/2"	12"	4 7/8"	Damp

CARYLE

Polished Nickel or Aged Bronze / Opal Etched Glass



60-6788

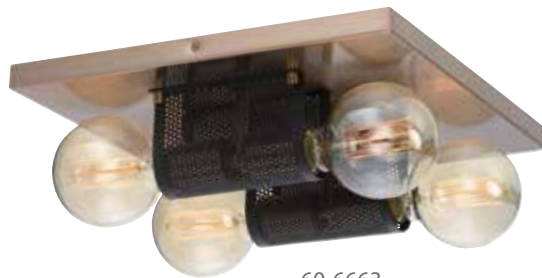


60-6789

Item#	Description	Finish	No. of Lights	Lamp Type	Base	Max Watts	Length	Width	Height	Ext.	Cert. Type
60-6661	Sconce	Matte Black / Copper Brushed Brass	1	G25	Med.	60W	•	4 1/2"	9 1/2"	4 1/4"	Damp
60-6662	2 Lt. Vanity	Matte Black / Copper Brushed Brass	2	G25	Med.	60W	•	15"	4 1/2"	4 1/4"	Damp
60-6663	4 Lt. Flush	Matte Black / Copper Brushed Brass	4	G25	Med.	60W	13 3/4"	13 3/4"	5"	•	Damp
60-6664	4 Lt. Vanity	Matte Black / Copper Brushed Brass	4	G25	Med.	60W	•	30"	4 1/2"	4 1/4"	Damp
60-6665	6 Lt. Vanity	Matte Black / Copper Brushed Brass	6	G25	Med.	60W	•	45"	4 1/2"	4 1/4"	Damp

PASSAGE

Copper Brushed Brass / Black Mesh



60-6663



60-6661



60-6662



60-6664



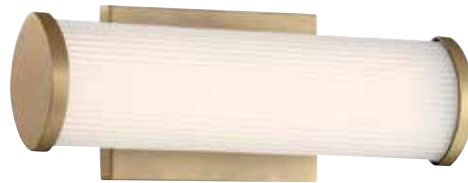
60-6665

Item#	Description	Finish	Light Source	Watts	Incand. Equiv.	Length	Width	Height	Ext.	CCT	Lumens	CRI	Cert. Type
62-1591	Vanity	Brushed Brass	LED	13	60W	•	12 1/2"	4 1/2"	3 1/4"	3000K	1,105*	90	Damp
62-1592	Vanity	Brushed Brass	LED	26	2x60W	•	24 3/8"	4 1/2"	3 1/4"	3000K	2,210*	90	Damp
62-1593	Vanity	Brushed Brass	LED	39	3x60W	•	35 5/8"	4 1/2"	3 1/4"	3000K	3,315*	90	Damp

*Lumens measured at LED source.

LENA LED

Brushed Brass / Fluted Acrylic



62-1591



62-1592



62-1593

Item#	Description	Finish	Light Source	Watts	Incand. Equiv.	Length	Width	Height	Ext.	CCT	Lumens	CRI	Cert. Type
62-1601	Vanity	Brushed Brass	LED	13	60W	•	12 ¾"	4 ½"	3 ⅝"	3000K	1,105*	90	Damp
62-1602	Vanity	Brushed Brass	LED	26	2x60W	•	24"	4 ½"	3 ⅝"	3000K	2,210*	90	Damp
62-1603	Vanity	Brushed Brass	LED	39	3x60W	•	35 ⅝"	4 ½"	3 ⅝"	3000K	3,315*	90	Damp

*Lumens measured at LED source.

CAPER LED

Brushed Brass / Frosted Acrylic



62-1601



62-1602



62-1603

PRANA

Matte Black / Brushed Nickel



60-6622



60-6624



60-6621

Item#	Description	Finish	No. of Lights	Lamp Type	Base	Max Watts	Length	Width	Height	Ext.	Cert. Type
60-6621	Mini Pendant	Matte Black / Brushed Nickel	1	G25	Med.	60W	•	8"	9 1/2"	•	Dry
60-6622	Pendant	Matte Black / Brushed Nickel	4	G25	Med.	60W	•	20"	12"	•	Dry
60-6623	Foyer	Matte Black / Brushed Nickel	6	G25	Med.	60W	•	18"	24 3/8"	•	Dry
60-6624	Semi Flush†	Matte Black / Brushed Nickel	4	G25	Med.	60W	•	16"	10 1/4"	•	Dry
60-6625	Island Pendant	Matte Black / Brushed Nickel	4	G25	Med.	60W	41 7/8"	14 3/4"	14"	•	Dry

†Pendant conversion kit for semi flush: 25-3067, Additional Stems: (6") 25-2057, (12") 25-2055. Flush and pendants include 12' of wire.



60-6623



60-6625

PRANA

White



60-6722



60-6724



60-6721

Item#	Description	Finish	No. of Lights	Lamp Type	Base	Max Watts	Length	Width	Height	Ext.	Cert. Type
60-6721	Mini Pendant	White	1	G25	Med.	60W	•	8"	9 1/2"	•	Dry
60-6722	Pendant	White	4	G25	Med.	60W	•	20"	12"	•	Dry
60-6723	Foyer	White	6	G25	Med.	60W	•	18"	24 3/8"	•	Dry
60-6724	Semi Flush†	White	4	G25	Med.	60W	•	16"	10 1/4"	•	Dry
60-6725	Island Pendant	White	4	G25	Med.	60W	41 7/8"	14 3/4"	14"	•	Dry

†Pendant conversion kit for semi flush: **25-460**, Additional Stems: (6") **25-5014**, (12") **25-5015**.
Flush and pendants include 12' of wire.



60-6723



60-6725

ELLUSION LED

Polished Nickel or Matte Black / Seeded Glass



62-1502



62-1503



62-1501

Item#	Description	Finish	Light Source	Watts	Incand. Equiv.	Length	Width	Height	Ext.	CCT	Lumens	CRI	Cert. Type
62-1501	Sconce	Polished Nickel	LED	15	60W	•	4 ¾"	6 ⅜"	2 ½"	3000K	675*	90	Damp
62-1502	Sconce	Polished Nickel	LED	15	60W	•	7 ¼"	7"	2 ½"	3000K	675*	90	Damp
62-1503	Sconce	Polished Nickel	LED	13	60W	•	4 ¾"	14 ⅜"	2 ⅜"	3000K	700*	90	Damp
62-1511	Sconce	Matte Black	LED	15	60W	•	4 ¾"	6 ⅜"	2 ½"	3000K	675*	90	Damp
62-1512	Sconce	Matte Black	LED	15	60W	•	7 ¼"	7"	2 ½"	3000K	675*	90	Damp
62-1513	Sconce	Matte Black	LED	13	60W	•	4 ¾"	14 ⅜"	2 ⅜"	3000K	700*	90	Damp

*Lumens measured at LED source.



62-1513



62-1512



62-1511

Item#	Description	Finish	Light Source	Watts	Incand. Equiv.	Length	Width	Height	Ext.	CCT	Lumens	CRI	Cert. Type
62-1491	Sconce / Ceiling	Polished Nickel	LED	11	40W	•	10 ¼"	10 ¼"	2 ¾"	3000K	400*	90	Damp
62-1492	Sconce / Ceiling	Matte Black	LED	11	40W	•	10 ¼"	10 ¼"	2 ¾"	3000K	400*	90	Damp
62-1493	Sconce / Ceiling	Polished Nickel	LED	11	40W	•	10 ¼"	10 ¼"	2 ¾"	3000K	400*	90	Damp
62-1494	Sconce / Ceiling	Matte Black	LED	11	40W	•	10 ¼"	10 ¼"	2 ¾"	3000K	400*	90	Damp

*Lumens measured at LED source.

RIVERBED LED

Brushed Brass / Woven Glass

Wall or ceiling installation



62-1491



62-1493



62-1492



62-1494

Item#	Description	Finish	Light Source	Watts	Incand. Equiv.	Length	Width	Height	Ext.	CCT	Lumens	CRI	Cert. Type
62-1486	Sconce / Ceiling	Polished Nickel	LED	15	60W	•	11"	11"	2"	3000K	600*	90	Damp
62-1487	Sconce / Ceiling	Matte Black	LED	15	60W	•	11"	11"	2"	3000K	600*	90	Damp

*Lumens measured at LED source.

CALLISTO LED

Matte Black / Mesh Glass

Wall or ceiling installation



62-1486



62-1487

Item#	Description	Finish	Light Source	Watts	Incand. Equiv.	Length	Width	Height	Ext.	CCT	Lumens	CRI	Cert. Type
62-1481	Vanity	Matte Black	LED	9	40W	•	4 ¾"	12 ⅝"	3"	3000K	450*	90	Damp
62-1482	Vanity	Matte Black	LED	12	60W	•	12 ⅝"	4 ¾"	3"	3000K	550*	90	Damp
62-1483	Vanity	Matte Black	LED	19	60W	•	24"	4 ¾"	3"	3000K	720*	90	Damp

*Lumens measured at LED source.

CERES LED

Matte Black / Ice Cube Glass



62-1482



62-1481



62-1483

Item#	Description	Finish	Light Source	Watts	Incand. Equiv.	Length	Width	Height	Ext.	CCT	Lumens	CRI	Cert. Type
62-1468	Sconce	White	LED	5	25W	•	5 1/2"	5 1/2"	2 3/4"	3000K	200*	90	Damp
62-1469	Sconce	Matte Black	LED	5	25W	•	5 1/2"	5 1/2"	2 3/4"	3000K	200*	90	Damp

*Lumens measured at LED source.
Articulated center disc

PINION LED

White or Matte Black



Indoor / Outdoor



62-1468



Articulated center disc



62-1469



Articulated center disc

Item#	Description	Finish	Light Source	Watts	Incand. Equiv.	Length	Width	Height	Ext.	CCT	Lumens	CRI	Cert. Type
62-1551	Pendant	Black / Gray Wood Finish	LED	112	10x60W	18"	18"	28 3/8"	•	3000K	9,456*	90	Dry
62-1552	Semi Flush†	Black / Gray Wood Finish	LED	52	5x60W	14"	14"	3 1/2"	•	3000K	4,880*	90	Dry
62-1553	Pendant	Black / Gray Wood Finish	LED	39	3x60W	37 3/4"	2"	16"	•	3000K	2,360*	90	Dry

*Lumens measured at LED source.

†Pendant conversion kit for semi flush: 25-485, Additional Stems: (6") 25-479, (12") 25-480. Pendants and semi-flush include 12' of wire.

ALTA LED

Black and Gray Wood Finish / Frosted Acrylic



62-1552



62-1553



62-1551

Item#	Description	Finish	No. of Lights	Lamp Type	Base	Max Watts	Length	Width	Height	Ext.	Cert. Type
60-6625	4 Lt. Pendant	Black / Honey Wood Finish	4	A19*	Med.	60W	24"	24"	14 ¾"	•	Dry
60-6826	6 Lt. Island Pendant	Black / Honey Wood Finish	6	A19*	Med.	60W	40"	15"	15"	•	Dry
60-6827	4 Lt. Semi Flush†	Black / Honey Wood Finish	4	A19*	Med.	60W	16"	16"	14 ¼"	•	Dry

†Pendant conversion kit for semi flush: 25-485, Additional Stems: (6") 25-479, (12") 25-480. Semi Flush and pendants include 12' of wire.

BEACON

Black and Honey Wood Finish



Item#	Description	Finish	No. of Lights	Lamp Type	Base	Max Watts	Length	Width	Height	Ext.	Cert. Type
60-6985	4 Lt. Pendant	Black / Gray Wood Finish	4	A19	Med.	100W	27"	24 5/8"	27"	•	Dry

Additional Stems: (6") 25-479, (12") 25-480.
Pendant includes 12' of wire.

AUGUSTA

Black / Gray Wood Finish



60-6985

Item#	Description	Finish	No. of Lights	Lamp Type	Base	Max Watts	Length	Width	Height	Ext.	Cert. Type
60-6980	5 Lt. Pendant	Black / Honey Wood Finish	5	A19	Med.	60W	24"	24"	8 ¾"	•	Dry

Additional Stems: (6") 25-479, (12") 25-480.
Pendant includes 12' of wire.

BARRIQUE

Black / Honey Wood Finish



60-6980

CHASSIS

Matte Black / Copper Brushed Brass



60-6642



60-6643



60-6644

Item#	Description	Finish	No. of Lights	Lamp Type	Base	Max Watts	Length	Width	Height	Ext.	Cert. Type
60-6641	Mini Pendant	Matte Black / Copper Brushed Brass	1	G25	Med.	60W	•	10"	8 1/8"	•	Dry
60-6642	Pendant	Matte Black / Copper Brushed Brass	3	A19	Med.	60W	•	20"	19"	•	Dry
60-6643	Semi Flush†	Matte Black / Copper Brushed Brass	3	A19	Med.	60W	•	14"	12"	•	Dry
60-6644	Island Pendant	Matte Black / Copper Brushed Brass	4	A19	Med.	60W	40"	12"	10 3/8"	•	Dry
60-6651	Sconce	Matte Black / Copper Brushed Brass	1	G25	Med.	60W	•	7 1/2"	5"	4 5/8"	Damp
60-6652	2 Lt. Vanity	Matte Black / Copper Brushed Brass	2	G25	Med.	60W	•	15 3/4"	4 3/4"	4 5/8"	Damp
60-6653	3 Lt. Vanity	Matte Black / Copper Brushed Brass	3	G25	Med.	60W	•	24"	4 3/4"	4 5/8"	Damp
60-6654	4 Lt. Vanity	Matte Black / Copper Brushed Brass	4	G25	Med.	60W	•	32 1/4"	4 3/4"	4 5/8"	Damp

†Pendant conversion kit for semi flush: 25-461, Additional Stems: (6") 25-492, (12") 25-493. Semi Flush and pendants include 12' of wire.



60-6641



60-6651



60-6652



60-6653



60-6654

OUTRIGGER

Nutmeg Wood Finish / Brushed Nickel or Mahogany Bronze



60-6883



60-6882



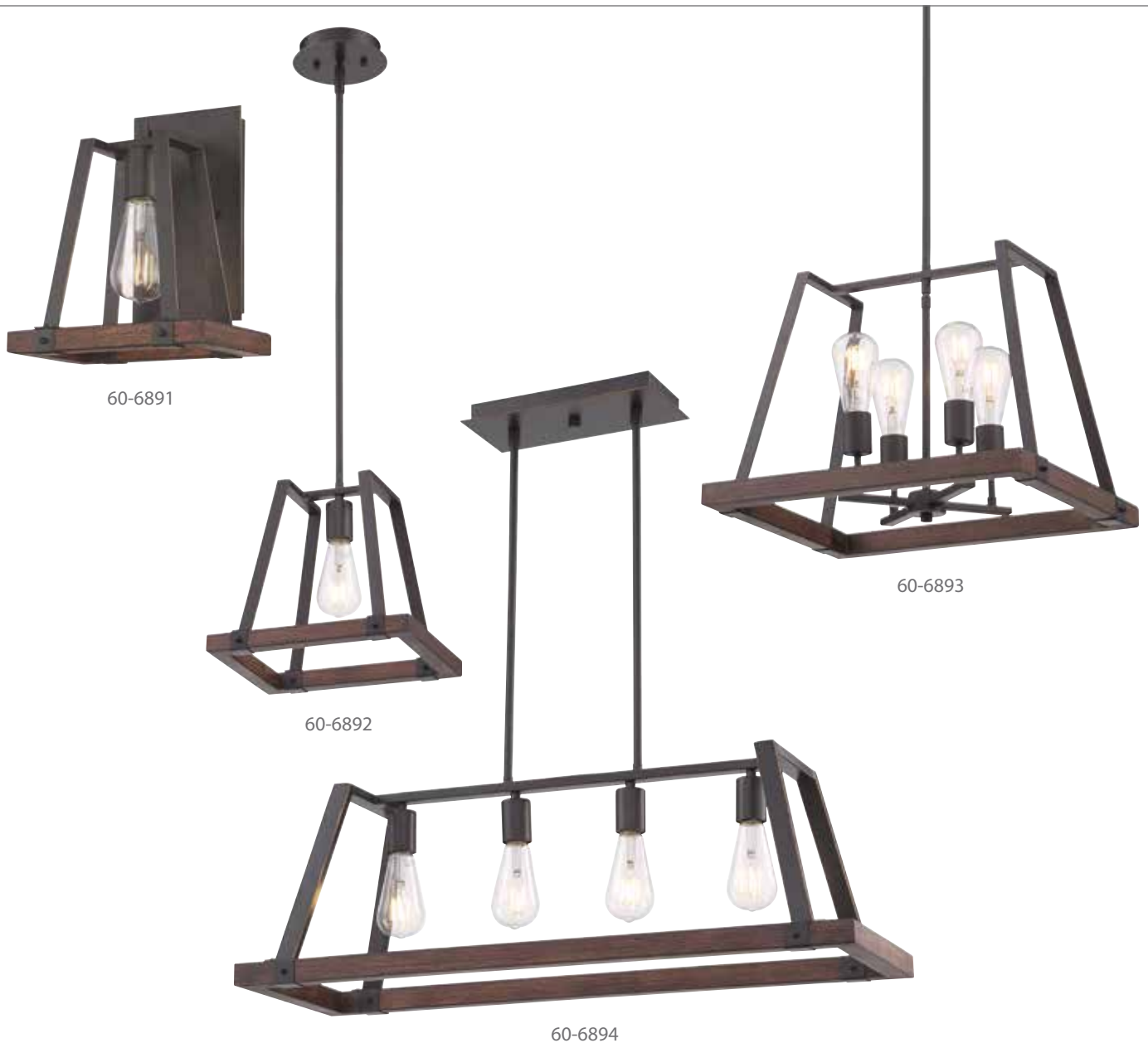
60-6881



60-6884

Item#	Description	Finish	No. of Lights	Lamp Type	Base	Max Watts	Length	Width	Height	Ext.	Cert. Type
60-6881	1 Lt. Vanity	Nutmeg Wood Finish / Brushed Nickel	1	A19	Med.	60W	•	9 1/2"	11"	7 3/4"	Damp
60-6882	Mini Pendant	Nutmeg Wood Finish / Brushed Nickel	1	A19	Med.	60W	11 1/2"	8 1/2"	10"	•	Dry
60-6883	4 Lt. Pendant	Nutmeg Wood Finish / Brushed Nickel	4	A19	Med.	60W	18"	14 1/4"	13 1/2"	•	Dry
60-6884	4 Lt. Island Pendant	Nutmeg Wood Finish / Brushed Nickel	4	A19	Med.	60W	32"	11"	10 3/4"	•	Dry
60-6891	1 Lt. Vanity	Nutmeg Wood Finish / Mahogany Bronze	1	A19	Med.	60W	•	9 1/2"	11"	7 3/4"	Damp
60-6892	Mini Pendant	Nutmeg Wood Finish / Mahogany Bronze	1	A19	Med.	60W	11 1/2"	8 1/2"	10"	•	Dry
60-6893	4 Lt. Pendant	Nutmeg Wood Finish / Mahogany Bronze	4	A19	Med.	60W	18"	14 1/4"	13 1/2"	•	Dry
60-6894	4 Lt. Island Pendant	Nutmeg Wood Finish / Mahogany Bronze	4	A19	Med.	60W	32"	11"	10 3/4"	•	Dry

Additional Stems (Brushed Nickel): (6") 25-482, (12") 25-483, Additional Stems (Mahogany Bronze): (6") 25-495, (12") 25-496
Pendants include 12' of Cord.



ARABEL

Nutmeg Wood Finish and Brushed Nickel / Clear Seeded Glass



60-6966



60-6965



60-6967

Item#	Description	Finish	No. of Lights	Lamp Type	Base	Max Watts	Length	Width	Height	Ext.	Cert. Type
60-6961	1 Lt. Vanity	Nutmeg Wood Finish / Brushed Nickel	1	A19	Med.	60W	•	4 ¼"	9"	6 ½"	Damp
60-6962	2 Lt. Vanity	Nutmeg Wood Finish / Brushed Nickel	2	A19	Med.	60W	•	11 ½"	10"	6 ½"	Damp
60-6963	3 Lt. Vanity	Nutmeg Wood Finish / Brushed Nickel	3	A19	Med.	60W	•	20 ¼"	10"	6 ½"	Damp
60-6964	4 Lt. Vanity	Nutmeg Wood Finish / Brushed Nickel	4	A19	Med.	60W	•	28 ¼"	10"	6 ½"	Damp
60-6965	Mini Pendant	Nutmeg Wood Finish / Brushed Nickel	1	A19	Med.	60W	11"	4"	12 ½"	•	Dry
60-6966	4 Lt. Chandelier	Nutmeg Wood Finish / Brushed Nickel	4	A19	Med.	60W	24"	24"	20 ¼"	•	Dry
60-6967	4 Lt. Island Pendant	Nutmeg Wood Finish / Brushed Nickel	4	A19	Med.	60W	32"	4"	18"	•	Dry

Additional chain: (3') 25-490, Additional Stems: (6") 25-482, (12") 25-483
Chandelier and Pendants include 12' of wire.



60-6961



60-6962



60-6963



60-6964

Item#	Description	Finish	No. of Lights	Lamp Type	Base	Max Watts	Length	Width	Height	Ext.	Cert. Type
60-6731	Mini Pendant	Mahogany Bronze	1	A19*	Med.	60W	•	5"	7 ½"	•	Dry
60-6732	Mini Pendant	Matte Black	1	A19*	Med.	60W	•	5"	7 ½"	•	Dry
60-6733	Mini Pendant	Black / Aged Gold	1	A19*	Med.	60W	•	5"	7 ½"	•	Dry
60-6734	Mini Pendant	Polished Nickel	1	A19*	Med.	60W	•	5"	7 ½"	•	Dry
60-6735	Mini Pendant	Vintage Brass	1	A19*	Med.	60W	•	5"	7 ½"	•	Dry
60-6736	Mini Pendant	Brushed Nickel	1	A19*	Med.	60W	•	5"	7 ½"	•	Dry

Fixtures include 12' of Cord .

ANTEBELLUM

Brushed Nickel, Mahogany Bronze, Matte Black, Black and Aged Gold, Polished Nickel or Vintage Brass / Clear Glass



Item#	Description	Finish	No. of Lights	Lamp Type	Base	Max Watts	Length	Width	Height	Ext.	Cert. Type
60-6751	1 Lt. Pendant	Polished Nickel / Matte Black	1	A19*	Med.	100W	•	10 ¼"	16 ⅞"	•	Dry
60-6752	1 Lt. Pendant	Polished Nickel / Matte White	1	A19*	Med.	100W	•	10 ¼"	16 ⅞"	•	Dry
60-6753	1 Lt. Pendant	Matte Black / Burnished Brass	1	A19*	Med.	100W	•	10 ¼"	16 ⅞"	•	Dry

Additional chain (Polished Nickel): (3') 25-4141, Additional chain (Matte Black): (3') 25-475
Pendants include 12' of wire and 4' of chain.

WATSON

Polished Nickel with Matte Black Shade, Polished Nickel with Matte White Shade, or Matte Black with Burnished Brass Shade,



60-6751



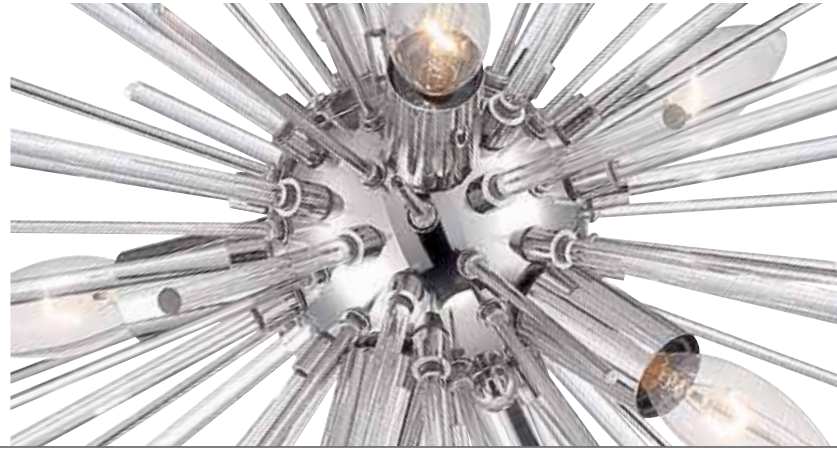
60-6752



60-6753

CIRRUS

Vintage Brass or Polished Nickel



60-6993



60-6991

Item#	Description	Finish	No. of Lights	Lamp Type	Base	Max Watts	Length	Width	Height	Ext.	Cert. Type
60-6991	6 Lt. Pendant	Polished Nickel	6	Type B	Cand.	60W	•	16"	16"	•	Dry
60-6992	6 Lt. Pendant	Vintage Brass	6	Type B	Cand.	60W	•	16"	16"	•	Dry
60-6993	8 Lt. Pendant	Polished Nickel	8	Type B	Cand.	60W	•	19 1/2"	19 1/2"	•	Dry
60-6994	8 Lt. Pendant	Vintage Brass	8	Type B	Cand.	60W	•	19 1/2"	19 1/2"	•	Dry

Additional chain (Polished Nickel): (3') 25-490, Additional chain (Natural Brass): (3') 25-484
Pendants include 12' of wire and 4' of chain.



60-6994



60-6992

Item#	Description	Finish	No. of Lights	Lamp Type	Base	Max Watts	Length	Width	Height	Ext.	Cert. Type
60-6730	6 Lt. Pendant	Matte Black / Burnished Brass	6	Type "B"	Cand.	60W	•	17"	17 ¾"	•	Damp

Additional Stems: (6") 25-465, (12") 25-466
Pendant includes 12' of wire.

SPIREFLY

Matte Black / Burnished Brass



60-6730

Item#	Description	Finish	No. of Lights	Lamp Type	Base	Max Watts	Length	Width	Height	Ext.	Cert. Type
60-6717	2 Lt. Vanity	Burnished Brass	2	Type "B"	Cand.	60W	•	14"	11 5/8"	6"	Damp
60-6718	2 Lt. Vanity	Polished Nickel	2	Type "B"	Cand.	60W	•	14"	11 5/8"	6"	Damp
60-6719	2 Lt. Vanity	Aged Bronze	2	Type "B"	Cand.	60W	•	14"	11 5/8"	6"	Damp

TRIBECA

Burnished Brass, Polished Nickel or Aged Bronze / White Linen Shade



60-6717



60-6718



60-6719

Item#	Description	Finish	No. of Lights	Lamp Type	Base	Max Watts	Length	Width	Height	Ext.	Cert. Type
60-6691	1 Lt. Sconce	Brushed Nickel	1	Type "B"	Cand.	60W	•	4 ½"	18"	5 ⅛"	Damp
60-6692	1 Lt. Sconce	Burnished Brass	1	Type "B"	Cand.	60W	•	4 ½"	18"	5 ⅛"	Damp
60-6693	1 Lt. Sconce	Polished Nickel	1	Type "B"	Cand.	60W	•	4 ½"	18"	5 ⅛"	Damp

VESEY

Brushed Nickel, Burnished Brass or Polished Nickel / White Linen Shade



60-6692



60-6693



60-6691

Item#	Description	Finish	No. of Lights	Lamp Type	Base	Max Watts	Length	Width	Height	Ext.	Cert. Type
60-6707	1 Lt. Sconce	Burnished Brass	1	Type "B"	Cand.	60W	•	6"	16"	7 ¼"	Damp
60-6708	1 Lt. Sconce	Polished Nickel	1	Type "B"	Cand.	60W	•	6"	16"	7 ¼"	Damp
60-6709	1 Lt. Sconce	Aged Bronze	1	Type "B"	Cand.	60W	•	6"	16"	7 ¼"	Damp

HIGHLINE

Burnished Brass or Polished Nickel / White Linen Shade



60-6707



60-6709



60-6708

Item#	Description	Finish	No. of Lights	Lamp Type	Base	Max Watts	Length	Width	Height	Ext.	Cert. Type
60-6687	1 Lt. Sconce	Burnished Brass	1	Type "B"	Cand.	60W	•	5 1/2"	19"	6 3/4"	Damp
60-6688	1 Lt. Sconce	Polished Nickel	1	Type "B"	Cand.	60W	•	5 1/2"	19"	6 3/4"	Damp
60-6689	1 Lt. Sconce	Aged Bronze	1	Type "B"	Cand.	60W	•	5 1/2"	19"	6 3/4"	Damp

OLMSTEAD

Burnished Brass, Polished Nickel or Aged Bronze / White Linen Shade



60-6687



60-6689



60-6688

Item#	Description	Finish	No. of Lights	Lamp Type	Base	Max Watts	Length	Width	Height	Ext.	Cert. Type
60-6681	1 Lt. Sconce	Burnished Brass	1	Type "B"	Cand.	60W	•	5"	18 7/8"	6 3/4"	Damp
60-6682	1 Lt. Sconce	Polished Nickel	1	Type "B"	Cand.	60W	•	5"	18 7/8"	6 3/4"	Damp

THOMPSON

Burnished Brass or Polished Nickel / White Linen Shade



60-6681



60-6682

Item#	Description	Finish	No. of Lights	Lamp Type	Base	Max Watts	Length	Width	Height	Ext.	Cert. Type
60-6677	1 Lt. Sconce	Burnished Brass	1	A19	Med.	100W	•	4 ½"	18"	6 ¼"	Damp
60-6678	1 Lt. Sconce	Polished Nickel	1	A19	Med.	100W	•	4 ½"	18"	6 ¼"	Damp
60-6679	1 Lt. Sconce	Aged Bronze	1	A19	Med.	100W	•	4 ½"	18"	6 ¼"	Damp

RECTOR

Burnished Brass, Polished Nickel or Aged Bronze / Clear Seeded Glass



60-6677



60-6679



60-6678

Item#	Description	Finish	No. of Lights	Lamp Type	Base	Max Watts	Length	Width	Height	Ext.	Cert. Type
60-6840	2 Lt. Vanity	Aged Bronze	2	A19	Med.	100W	•	7"	12 ½"	4"	Damp
60-6841	2 Lt. Vanity	Polished Nickel	2	A19	Med.	100W	•	7"	12 ½"	4"	Damp
60-6842	2 Lt. Vanity	Burnished Brass	2	A19	Med.	100W	•	7"	12 ½"	4"	Damp
60-6844	4 Lt. Vanity	Burnished Brass	4	A19	Med.	100W	•	7"	24"	4"	Damp
60-6845	4 Lt. Vanity	Polished Nickel	4	A19	Med.	100W	•	7"	24"	4"	Damp
60-6846	4 Lt. Vanity	Aged Bronze	4	A19	Med.	100W	•	7"	24"	4"	Damp

SYLPH

Burnished Brass, Polished Nickel or Aged Bronze / Satin White Glass



60-6840



60-6841



60-6842



60-6846



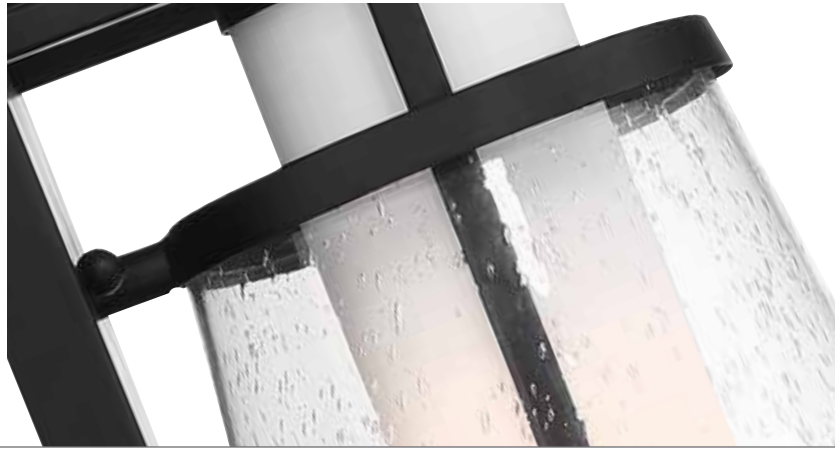
60-6845



60-6844

ANAU

Matte Black / Opal Etched and Clear Seeded Glass



Outdoor



60-6603



60-6601



60-6602

Item#	Description	Finish	No. of Lights	Lamp Type	Base	Max Watts	Length	Width	Height	Ext.	Cert. Type
60-6601	Small Wall Lantern	Matte Black	1	A19	Med.	60W	•	6 ¾"	12 ¾"	7 ⅜"	Wet
60-6602	Med. Wall Lantern	Matte Black	1	A19	Med.	60W	•	8 ¼"	15 ¼"	8 ⅝"	Wet
60-6603	Large Wall Lantern	Matte Black	1	A19	Med.	60W	•	10 ½"	17"	11"	Wet
60-6604	Hanging Lantern	Matte Black	1	A19	Med.	60W	•	10 ½"	18 ⅞"	•	Damp
60-6605	Post Lantern	Matte Black	1	A19	Med.	60W	•	10 ½"	19 ⅞"	•	Wet

Additional chain: (3') 25-462, Pier Mount Base for post: 25-476.
Hanging fixture includes 12' of wire and 4' of chain.



60-6605



60-6604

HALIFAX

Matte Black / Clear Glass



Outdoor



60-6583



60-6581



60-6582

Item#	Description	Finish	No. of Lights	Lamp Type	Base	Max Watts	Length	Width	Height	Ext.	Cert. Type
60-6581	Small Wall Lantern	Matte Black	1	A19	Med.	60W	•	6"	10 ¼"	6 ¾"	Wet
60-6582	Med. Wall Lantern	Matte Black	2	T6	Cand.	60W	•	8"	13 ½"	8 ½"	Wet
60-6583	Large Wall Lantern	Matte Black	4	T6	Cand.	60W	•	9 ½"	15 ¾"	10"	Wet
60-6584	Hanging Lantern	Matte Black	4	T6	Cand.	60W	•	9 ½"	17 ¾"	•	Damp
60-6585	Post Lantern	Matte Black	4	T6	Cand.	60W	•	9 ½"	16 ½"	•	Wet

Additional chain: (3') 25-462, Pier Mount Base for post: 25-476.
Hanging fixture includes 12' of wire and 4' of chain.



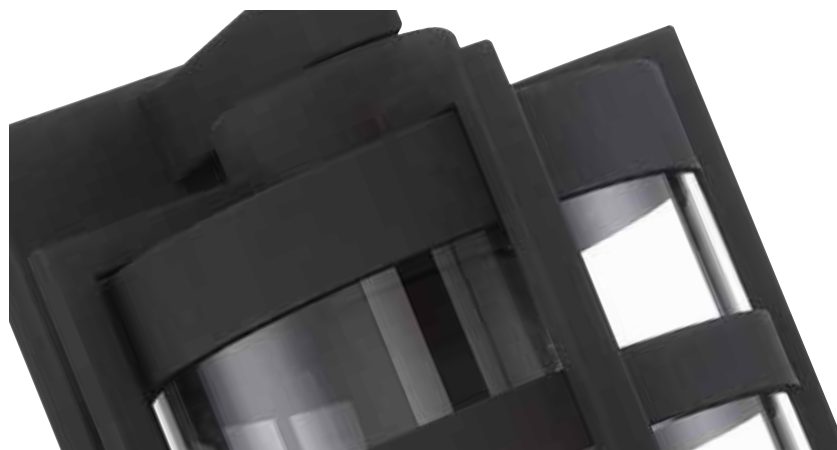
60-6585



60-6584

TOFINO

Textured Black / Clear Glass



Outdoor



60-6573



60-6571



60-6572

Item#	Description	Finish	No. of Lights	Lamp Type	Base	Max Watts	Length	Width	Height	Ext.	Cert. Type
60-6571	Small Wall Lantern	Textured Black	1	T9	Med.	60W	•	5 3/8"	11 1/4"	6 1/2"	Wet
60-6572	Med. Wall Lantern	Textured Black	1	T9	Med.	60W	•	6 3/8"	14 1/2"	7 3/8"	Wet
60-6573	Large Wall Lantern	Textured Black	1	T9	Med.	60W	•	7 3/8"	15 7/8"	8 1/2"	Wet
60-6574	Hanging Lantern	Textured Black	1	T9	Med.	60W	•	7 3/8"	16 3/8"	•	Damp
60-6575	Post Lantern	Textured Black	1	T9	Med.	60W	•	7 3/8"	17 3/4"	•	Wet

Additional chain: (3') 25-6407, Pier Mount Base for post: 25-6406.
Hanging fixture includes 12' of wire and 4' of chain.



60-6575



60-6574

HOPEWELL

Matte Black / Clear Seeded Glass



Outdoor



60-6593



60-6591



60-6592

Item#	Description	Finish	No. of Lights	Lamp Type	Base	Max Watts	Length	Width	Height	Ext.	Cert. Type
60-6591	Small Wall Lantern	Matte Black	1	A19	Med.	60W	•	6"	12"	7"	Wet
60-6592	Med. Wall Lantern	Matte Black	1	A19	Med.	60W	•	7 ½"	14 ¾"	8 ½"	Wet
60-6593	Large Wall Lantern	Matte Black	1	A19	Med.	60W	•	9"	17 ⅝"	10"	Wet
60-6594	Hanging Lantern	Matte Black	1	A19	Med.	60W	•	9"	16 ½"	•	Damp
60-6595	Post Lantern	Matte Black	1	A19	Med.	60W	•	9"	17 ⅝"	•	Wet

Additional chain: (3') 25-462, Pier Mount Base for post: 25-476.
Hanging fixture includes 12' of wire and 4' of chain.



60-6595



60-6594

Item#	Description	Finish	Light Source	Watts	Incand. Equiv.	Length	Width	Height	Ext.	CCT	Lumens	CRI	Cert. Type
62-1464	Curved Sconce	Black	LED	5	25W	•	6"	4 3/4"	5 1/2"	3000K	240*	90	Wet
62-1465	Curved Sconce	White	LED	5	25W	•	6"	4 3/4"	5 1/2"	3000K	240*	90	Wet
62-1466	Cube Sconce	Black	LED	5	25W	•	4 3/4"	4 3/4"	4 3/4"	3000K	240*	90	Wet
62-1467	Cube Sconce	White	LED	5	25W	•	4 3/4"	4 3/4"	4 3/4"	3000K	240*	90	Wet

*Lumens measured at LED source.

LIGHTGATE LED

Black or White, with adjustable interior barn doors.



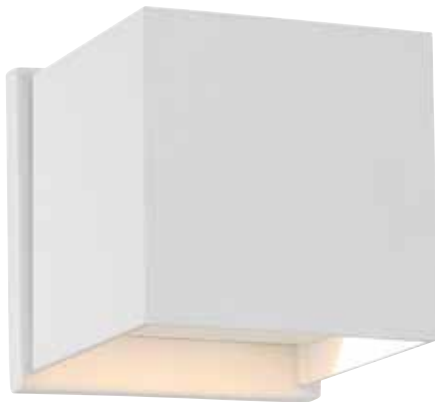
Indoor / Outdoor



62-1465



62-1464



62-1467



62-1466

Item#	Description	Finish	No. of Lights	Lamp Type	Base	Max Watts	Length	Width	Height	Ext.	Cert. Type
60-6578	Medium Sconce	Textured Black	1	A19	Med.	60W	•	6"	17"	5 ¾"	Wet
60-6579	Small Sconce	Textured Black	1	A19	Med.	60W	•	5"	13"	5 ½"	Wet

INDI

Textured Black / Clear Seeded Glass

Indoor / Outdoor



60-6579



60-6578

INDEX

60-6571	68	60-6654	47	60-6730	56
60-6572	68	60-6661	29	60-6731	52
60-6573	68	60-6662	29	60-6732	52
60-6574	69	60-6663	29	60-6733	52
60-6575	69	60-6664	29	60-6734	52
60-6578	73	60-6665	29	60-6735	52
60-6579	73	60-6671	8	60-6736	52
60-6581	66	60-6672	8	60-6741	9
60-6582	66	60-6673	8	60-6742	9
60-6583	66	60-6677	62	60-6748	14
60-6584	67	60-6678	62	60-6749	14
60-6585	67	60-6679	62	60-6751	53
60-6591	70	60-6681	61	60-6752	53
60-6592	70	60-6682	61	60-6753	53
60-6593	70	60-6687	60	60-6757	12
60-6594	71	60-6688	60	60-6758	12
60-6595	71	60-6689	60	60-6759	12
60-6601	64	60-6691	58	60-6761	10
60-6602	64	60-6692	58	60-6762	10
60-6603	64	60-6693	58	60-6768	11
60-6604	65	60-6697	13	60-6769	11
60-6605	65	60-6698	13	60-6771	24
60-6611	22	60-6699	13	60-6772	24
60-6612	22	60-6707	59	60-6773	24
60-6621	32	60-6708	59	60-6778	15
60-6622	32	60-6709	59	60-6779	15
60-6623	33	60-6711	22	60-6781	25
60-6624	32	60-6712	22	60-6782	25
60-6625	33	60-6717	57	60-6783	25
60-6641	47	60-6718	57	60-6784	24
60-6642	46	60-6719	57	60-6785	24
60-6643	46	60-6721	34	60-6786	24
60-6644	46	60-6722	34	60-6788	28
60-6651	47	60-6723	35	60-6789	28
60-6652	47	60-6724	34	60-6791	25
60-6653	47	60-6725	35	60-6792	25

60-6793	25	60-6925	20	62-1468	41
60-6797	15	60-6926	20	62-1469	41
60-6798	15	60-6931	4	62-1471	26
60-6799	15	60-6932	4	62-1472	27
60-6825	43	60-6933	5	62-1473	27
60-6826	43	60-6941	6	62-1474	27
60-6827	43	60-6942	6	62-1475	26
60-6840	63	60-6943	6	62-1476	26
60-6841	63	60-6951	7	62-1481	40
60-6842	63	60-6952	7	62-1482	40
60-6844	63	60-6953	7	62-1483	40
60-6845	63	60-6961	51	62-1486	39
60-6846	63	60-6962	51	62-1487	39
60-6851	23	60-6963	51	62-1491	38
60-6852	23	60-6964	51	62-1492	38
60-6853	23	60-6965	50	62-1493	38
60-6861	16	60-6966	50	62-1494	38
60-6862	16	60-6967	50	62-1501	36
60-6871	17	60-6971	19	62-1502	36
60-6872	17	60-6972	19	62-1503	36
60-6881	48	60-6973	19	62-1511	37
60-6882	48	60-6974	19	62-1512	37
60-6883	48	60-6975	18	62-1513	37
60-6884	48	60-6976	18	62-1551	42
60-6891	49	60-6977	18	62-1552	42
60-6892	49	60-6980	45	62-1553	42
60-6893	49	60-6985	44	62-1591	30
60-6894	49	60-6990	21	62-1592	30
60-6911	4	60-6991	54	62-1593	30
60-6912	4	60-6992	55	62-1601	31
60-6913	5	60-6993	54	62-1602	31
60-6915	20	60-6994	55	62-1603	31
60-6916	20	62-1464	72		
60-6921	4	62-1465	72		
60-6922	4	62-1466	72		
60-6923	5	62-1467	72		



www.nuvolighting.com
Catalog NU1400-1



National Toll-Free: **1.800.43.SATCO** (1.800.437.2826) www.satco.com

Corporate Offices & Distribution Center: **NEW YORK** 110 Heartland Blvd., Brentwood, NY 11717 800.437.2826 631.243.2022 Fax 631.243.2027

Distribution Centers: **FLORIDA** 900 N.W. 159th Drive, Miami, FL 33169 800.437.2826 305.624.2044 FAX 305.623.0286
CALIFORNIA 31288 San Benito St. Hayward, CA 94544 800.437.2826 510.487.4822 FAX 510.487.8955
WASHINGTON 4710 116th St. S.W., Mukiteo, WA 98275 800.437.2826 425.789.3300 FAX 425.789.3310
TEXAS 2000 Valwood Parkway, Farmers Branch, TX 75234 800.437.2826 972.247.2437 FAX 972.247.5408
PUERTO RICO Campeche St. 23, Julio N. Matos Industrial Park, Carolina, PR 00984 787.757.3510 FAX 787.757.3540



Like us!



Follow us!

© Copyright 2019, SATCO Products, Inc