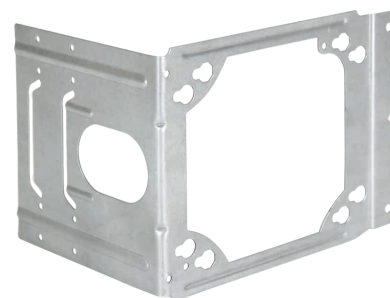
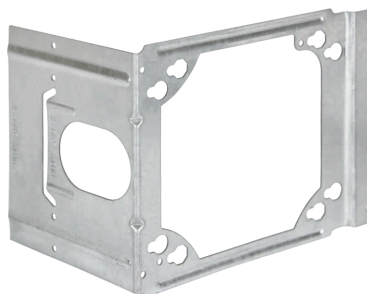


## SPECIFICATION & FEATURES

## BOX MOUNTING ADAPTERS

### DESCRIPTION:

Orbit Industries' Box Mounting Adapter mounts 4" or 4-11/16" square boxes directly-to-studs. The brackets features far side support for up to 4" deep studs, eliminating most of the box movement. Mounting holes allow for the use of a 4" ring, removing the need for an electrical box on low voltage applications.



### CERTIFICATION:

UL file E310661

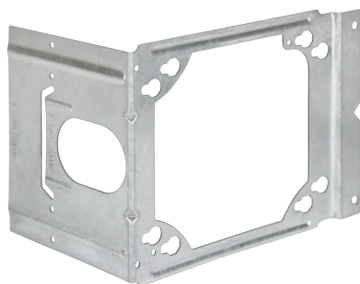
### FEATURES:

- Mounts to 4" and 4-11/16" square boxes
- Mounting holes allow for the installation of a 4" ring for low voltage applications
- Adjustable Back Support helps maintain rigidity once installed
- Low profile design limits drywall bulging
- For use with metal or wood studs

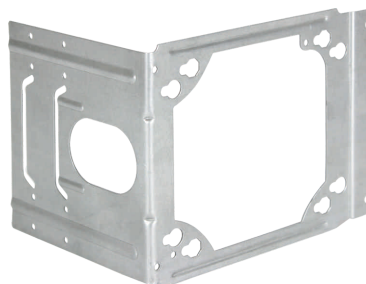


### CONFIGURATION DATA:

Part No.	Description	Std.Pkg.
BMA-23	Box Mounting Adapter with 3-1/2" and 2-1/2" Far Side Support	25
BMA-4	Box Mounting Adapter with Far Side Support up to 4"	25



BMA-23



BMA-4

