

## SPECIFICATION & FEATURES

## THREADED CONDUIT BODIES "LB" SERIES

### DESCRIPTION:

Orbit Industries threaded conduit bodies are commonly used for electrical service entrance wires or as an economical convenience box when extra wire capacity is needed. They are attached to threaded rigid or IMC conduits when a change of direction is required. The removable cover makes general maintenance and wire pulling and feed through easy and convenient. Orbit Industries threaded conduit bodies save time and money by eliminating costly bending of large conduits in order to change the directions of conduit runs. Installers can easily bend wires into the smooth turns. Their powder-coated finish and water-tight gasket ensure a weatherproof installation.



### CERTIFICATION:

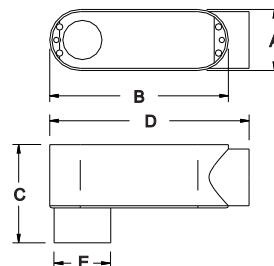
UL file E227970, Conforms to UL 514A



### FEATURES:

- Die Cast Copper-Free Aluminum
- With Die Cast Cover
- Neoprene Gasket

### LINE DRAWINGS:



### CONFIGURATION DATA:

| Part No. | Trade Size | A (in)   | B (in)   | C (in)   | D (in)    | E (in)   | Std.Pkg. |
|----------|------------|----------|----------|----------|-----------|----------|----------|
| LB-50A   | 1/2"       | 1-5/16"  | 3-7/8"   | 2-3/32"  | 4-5/16"   | 1-1/6"   | 10       |
| LB-75A   | 3/4"       | 1-9/16"  | 4-11/16" | 2-3/8"   | 5-3/32"   | 1-5/16"  | 10       |
| LB-100A  | 1"         | 1-13/16" | 5-3/8"   | 2-3/4"   | 5-29/32"  | 1-9/16"  | 5        |
| LB-125A  | 1-1/4"     | 2-1/2"   | 7-5/16"  | 3-1/2"   | 7-13/16"  | 1-31/32" | 2        |
| LB-150A  | 1-1/2"     | 2-1/2"   | 7-5/16"  | 3-1/2"   | 7-13/16"  | 2-3/16"  | 2        |
| LB-200A  | 2"         | 3-3/16"  | 9-1/2"   | 4-1/2"   | 10-1/16"  | 2-11/16" | 1        |
| LB-250A  | 2-1/2"     | 4-1/2"   | 12-1/16" | 5-5/16"  | 12-13/16" | 3-5/16"  | 1        |
| LB-300A  | 3"         | 4-1/2"   | 12-1/16" | 5-29/32" | 12-13/16" | 3-15/16" | 1        |
| LB-350A  | 3-1/2"     | 5-9/16"  | 15-1/16" | 7-5/16"  | 15-5/8"   | 4-17/32" | 1        |
| LB-400A  | 4"         | 5-9/16"  | 15-7/16" | 7-5/16"  | 15-5/8"   | 4-31/32" | 1        |

