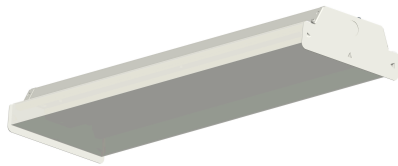


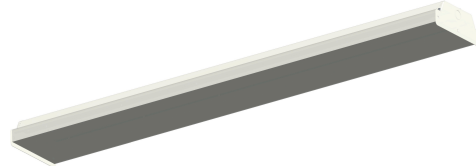
# GUS™ Jr WRAP INSTALLATION INSTRUCTIONS



Thank you for buying RAB lighting fixtures. Our goal is to design the best quality products to get the job done right. We'd like to hear your comments. Call the Marketing Department at 888-RAB-1000 or email: marketing@rabweb.com



GUSJR-2FT



GUSJR - 4FT

## IMPORTANT

**READ CAREFULLY BEFORE INSTALLING FIXTURE. RETAIN THESE INSTRUCTIONS FOR FUTURE REFERENCE.**

Fixtures must be wired in accordance with the National Electrical Code and all applicable local codes. Proper grounding is required for safety. THIS PRODUCT MUST BE INSTALLED IN ACCORDANCE WITH THE APPLICABLE INSTALLATION CODE BY A PERSON FAMILIAR WITH THE CONSTRUCTION AND OPERATION OF THE PRODUCT AND THE HAZARDS INVOLVED.

**WARNING: Make certain power is OFF before installing or maintaining fixture. No user-serviceable parts inside.**

## SURFACE MOUNTING

The fixture is suitable for indoor applications for ceiling or wall mounting, as follows:

1. Carefully snap out **Lens** one side at a time from **Housing**.
2. Rotate the **Fasteners(4)** 90 degrees then remove them from **LED Tray kit**, the **Tether cable(2)** will be used hold the **LED Tray Kit**.
3. Pull supply wires from Junction Box (not supplied) through **Center Access Hole** of **Housing** as shown in **Fig. 1**. Use appropriate UL-rated wire connectors as required by code to make electrical splices to fixture leads.
4. Secure **Housing** to junction box or mount **Housing** directly to a sturdy surface by using the **Drill Locations** (4 holes for 2FT & 4 FT fixture) fixture. Use the appropriate mounting hardware for the mounting surface.
5. Once connections are made push all wires behind the **LED Tray Kit**, place the LED tray in housing and rotate the **Fasteners(4)** 90 degrees to secure.
6. Replace **Lens**. Hook **Lens** to one side of **Housing** and Snap **Lens** into place as shown in **Fig. 2**.

**WARNING: To prevent wiring damage or abrasion, do not expose wiring to sharp objects.**

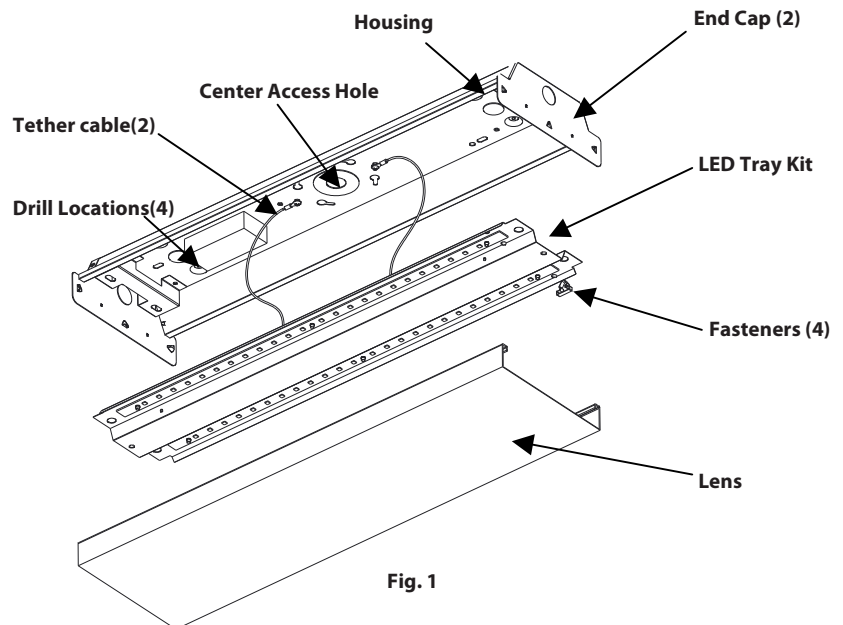


Fig. 1

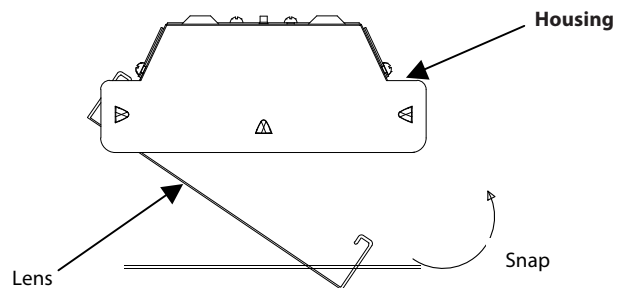


Fig.2

# GUS™ Jr WRAP INSTALLATION INSTRUCTIONS

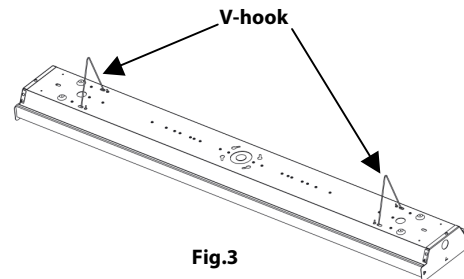


Thank you for buying RAB lighting fixtures. Our goal is to design the best quality products to get the job done right. We'd like to hear your comments. Call the Marketing Department at 888-RAB-1000 or email: [marketing@rabweb.com](mailto:marketing@rabweb.com)

## V-HOOK MOUNTING

The fixture can be mounted using V-hook (ordered separately as VHOOKGUSJR).

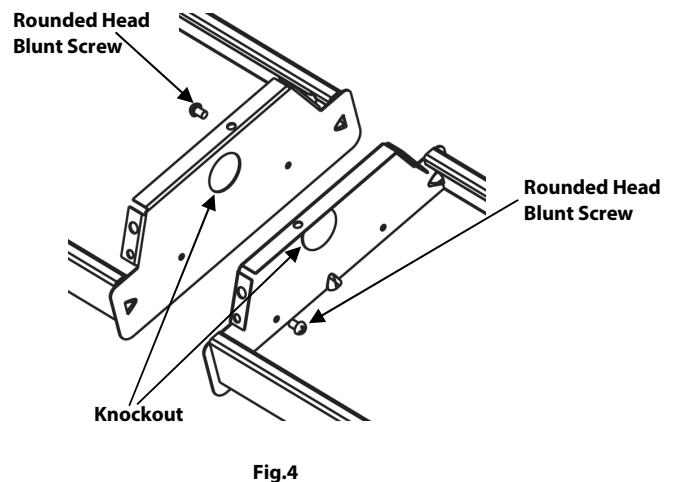
1. Mount **V-hook** to the housing as shown in **fig. 3**. Use the appropriate mounting hardware for the mounting surface.
2. For electrical wiring, snap out the Lens and LED tray kit as shown in **Fig.1**.
3. Pull supply wires in fixture through Central Access Hole. Use appropriate UL-rated wire connectors as required by code to make electrical splices to fixture leads.



## ROW MOUNTING AND THROUGH WIRING

(ordered separately )-Fig.4

1. Drill the **Knockout** from the End Caps.
2. Secure end caps with **Rounded Head Blunt Screws (2)** on the opposite direction and from the large hole to small hole provided as shown in **Fig. 4** to join both housings.
3. Follow directions on Page 1 to secure **Housings** to mounting surface. If necessary, feed wires through from one fixture to the other.



# GUS™ Jr WRAP INSTALLATION INSTRUCTIONS



Thank you for buying RAB lighting fixtures. Our goal is to design the best quality products to get the job done right. We'd like to hear your comments. Call the Marketing Department at 888-RAB-1000 or email: [marketing@rabweb.com](mailto:marketing@rabweb.com)

## 0-10V DIMMABLE WIRING

Universal voltage driver permits operation at 120V through 277V, 50 or 60 Hz. For 0-10V dimming, follow the wiring directions in **Fig. 5**.

1. Connect the black fixture lead to the LINE supply lead.
2. Connect the white fixture lead to the COMMON supply lead.
3. Connect the green GROUND wire from fixture to supply ground.
4. Connect the purple fixture lead to the (V+) DIM lead.
5. Connect the gray fixture lead to the (V-) DIM lead.
6. Cap the yellow fixture lead, if present. Do NOT connect.

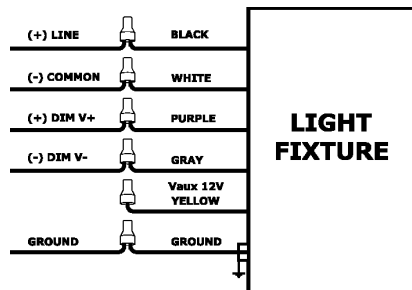


Fig. 5

## CLEANING & MAINTENANCE

**CAUTION: Be sure fixture temperature is cool enough to touch. Do not clean or maintain while fixture is energized.**

1. Clean acrylic lens with non-abrasive cleaning solution.
2. Do not open the fixture to clean the LEDs. Do not touch the LEDs.

## TROUBLESHOOTING

1. Check that the line voltage at the fixture is correct. Refer to wiring directions in **Fig.5**.
2. Be sure the fixture is grounded properly.

**Pending:**Patent. pending

*Note: These instructions do not cover all details or variations in equipment nor do they provide for every possible situation during installation operation or maintenance.*