

Halco®

LIGHTING TECHNOLOGIES

LED PRODUCT GUIDE

Volume 1 - 2020



Table of Contents

OUTDOOR LUMINAIRES

AL- Series Area Light	4
Field Selectable Semi-Cutoff Wallpack	5
Adjustable Full-Cutoff Wallpack	5
LED Mini Wallpack	5
Field Selectable CCT Flood Light	6
LED High Lumen Flood Light	6
CSP Series Slim Parking Garage Canopy	7

INDOOR LUMINAIRES

HTLV Series Linear Vaportight	7
RHB Series Round High Bay	7
Linear LED Premium High Bay Series	8
Linear LED High Bay Series	9
Linear Wrap	9
Linear Strip	10
Linear Strip Retrofit	10
Field Selectable Output & CCT Edge Lit Panel	10
Edge Lit Flat Panel	11
Surface Mount Kit	11
Field Selectable CCT Backlit Panel	12
Volumetric Panel Light Series	12
Field Selectable Output Troffer Retrofit Kit	13
ProLED Select Commercial Downlight Retrofit	13
Commercial Downlight Retrofit	14
High Performance Commercial Downlights	14
ProLED Select Downlight Retrofit	15
ECO Downlights	15
ProLED Surface Downlight Retrofit Series	15
Slim Downlights	16
Square Downlights	16

LAMPS

HID Area Light Retrofit Series	17
HID High Bay Retrofit Series	17
HID High Lumen Retrofit Series	17
HID Wallpack Retrofit Series	17
HID Post Top Retrofit Series	18
HID Omni Retrofit Series	18
Linear Direct Fit T8 Series	19
U-Bend Direct Fit T8 Series	19
T5 Direct Fit Replacement Series	19

ProLED T5 Single End Bypass Series	19
T8 Linear Single End Bypass Series	20
T8 Linear 8' Double Ended Bypass Series	20
T8 Linear Double Ended Bypass Series	20
ProLED Linear T8 Hybrid	20
ECO A19 Series	21
A19 Contractor Series 6 Packs	21
A19 GU24 Series	21
Omnidirectional A-Shape Series	21
Performance A-Shape Lamp	22
BR40	23
BR30	23
BR30 Contractor Series 6 Packs	23
R20	23
Prime PAR Series	24
ECO PAR Series	25
PAR36 / AR111 Indoor	25
PL Bypass Series	26
PL Direct Series	26
PL Hybrid Series	26
B11 Chandelier	27
Decorative Chandelier	27
Globe	27
Filament LED Series	28
Sign Lamps	29
Elevator Lamp	29
MR16	30
MR16 GU10	30
Commercial MR16 / MR11	31

OUTDOOR LAMPS

MR16 RGBW Series	31
MR16 Black	31
MR11	31
Outdoor PAR36	32
Outdoor PAR36 RGB-W Series	32
IP Rated LED JC Series	32
Omnidirectional IP65 JC Lamps	32
Traditional LED JC Series	33
Traditional LED Series: JC3 G4	33

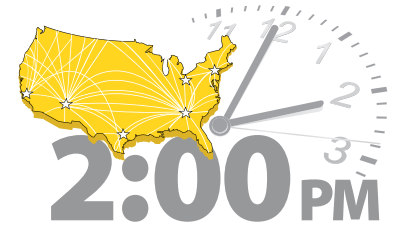


About Halco Lighting Technologies

Established in 1974, Halco Lighting Technologies is a leader in lamp, luminaire and ballast solutions. We are dedicated to providing you with the latest in energy efficient technologies, illustrated by our ProLED luminaires and full offering of ProLED lamps. Halco's luminaire offering features indoor recessed solutions such as ProLED Panel, Volumetric Panel and Downlight Retrofit Series luminaires. Our broad selection of long life, energy efficient ProLED lamps is available in popular shapes with an array of color temperatures and beam spreads. Halco is your single source for LED lamps for replacement and retrofit applications.

Service

We measure our success by one standard - your satisfaction. Halco carries deep inventory of a broad SKU offering to assure we have what you need when you need it. With strategically located warehouses in Atlanta, Chicago, Cleveland, Houston, Los Angeles and Phoenix, orders placed by 2:00 PM local warehouse time ship the same day. Will-call and courier service is also available for your convenience.



How to Read Ordering Information

Product #	Product Code	Description	Wattage	Base	Voltage	Color Temp.	CRI	Lumens	CBCP	Useful Life ¹	Dimmable ²	Pkg. Qty.	Beam Spread	MOL	Equivalent Wattage	Energy Star
81074	PAR36WFL4/827/IP67/LED	Wide Flood	4.5	MP Term	10-15V	2700K	82	300	700	40,000	Yes	1/6	32°	2.40"	20	No
81075	PAR36WFL6/827/IP67/LED	Wide Flood	6.5	MP Term	10-15V	2700K	82	450	1100	40,000	Yes	1/6	32°	2.40"	35	No
81076	PAR36WFL12/827/IP67/LED	Wide Flood	12.5	MP Term	10-15V	2700K	82	800	2000	40,000	Yes	1/6	32°	2.40"	50	No

Product Number
Use this product number when placing an order

Description
Light Distribution or other important information

Base
Indicates base type

Color Temp.
A term used to describe the color of a light source and is expressed in degrees Kelvin (K)

Lumens
Represents average light output

Useful Life
Rated at L70

MOL
Indicates maximum overall length in inches

Package Quantity
Indicates minimum sell quantity and smallest shipping carton

Energy Star / DLC Qualified
Designates a qualified product

Product Code
Abbreviated product description can also be used for ordering

Wattage
Indicates the power consumed by the lamp during operation

Voltage
Indicates the product's design voltage of operation

CRI
Lamps ability to render an object's color

CBCP
Luminous intensity at the center of the beam

Dimmable
Designates if product can be dimmed

Beam Spread
Indicates the beam angle or beam spread of a bulb, measured in degrees

Equivalent Wattage
Typical wattage of Incandescent or Halogen lamp of comparable light output

* Useful Life is defined as the point in time at which the lamp will maintain at least 70% of its initial lumens. The lamp will continue to burn past this point at decreased light levels.

ProLED AL-Series Area Light



Ordering Matrix

Example: AL150/T5U50/7PRS

Product Series	Wattage	Optics	Voltage	CCT	Recepticals	Options	
AL	150	/	T5	U	50	/	7PRS
AL= Area Light Series	100=100 Watt 150=150 Watt 200=200Watt 240=240 Watt 300=300 Watt	T2=Type II Optics T3=Type III Optics T4=Type IV Optics T5=Type V Optics	U=120-277V H=347-480V	40=4000K 50=5000K	7PRS= NEMA 7-Pin Receptacle with Shorting Cap	(OMIT)=None MS=Bi-Level, Daylight Harvesting Motion Sensor	

Notes:
Type 2 and Type 4 optics are assembled to order locally in the United States
347-480V options are assembled to order locally in the United States
Motion Sensor options are assembled to order locally in the United States

Light Mounts Sold Separately

Product #	Product Code	Description
10193	ALM/SASR	Area Light; Straight Arm; Square and Round Pole Adaptor
10195	ALM/TRS	Area Light; Trunnion Swivel; Bronze
10194	ALM/SKN	Area Light; Slipfitter Knuckle; Bronze

Quick Ship Product

Product #	Product Code	Wattage	Voltage	Color Temp.	CRI	Lumens	Useful Life ¹	Dimmable ²	Equivalent Wattage	DLC Qualified ³	
Type III - with 7-Pin Receptacle & Shorting Cap											
10211	AL100/T3U40/7PRS	100	120-277V	4000K	70	10890	100,000	0-10V	250W MH	Premium	
10201	AL100/T3U50/7PRS	100	120-277V	5000K	70	11032	100,000	0-10V	250W MH	Premium	
10213	AL150/T3U40/7PRS	150	120-277V	4000K	70	17508	100,000	0-10V	320W PSMH	Premium	
10203	AL150/T3U50/7PRS	150	120-277V	5000K	70	17736	100,000	0-10V	320W PSMH	Premium	
10215	AL200/T3U40/7PRS	200	120-277V	4000K	70	23058	100,000	0-10V	400W MH	Premium	
10205	AL200/T3U50/7PRS	200	120-277V	5000K	70	23358	100,000	0-10V	400W MH	Premium	
10217	AL240/T3U40/7PRS	240	120-277V	4000K	70	29468	100,000	0-10V	600W MH	Premium	
10207	AL240/T3U50/7PRS	240	120-277V	5000K	70	29851	100,000	0-10V	600W MH	Premium	
10219	AL300/T3U40/7PRS	300	120-277V	4000K	70	36087	100,000	0-10V	750W PSMH	Premium	
10209	AL300/T3U50/7PRS	300	120-277V	5000K	70	36556	100,000	0-10V	750W PSMH	Premium	
Type V - with 7-Pin Receptacle & Shorting Cap											
10210	AL100/T5U40/7PRS	100	120-277V	4000K	70	11029	100,000	0-10V	250W MH	Premium	
10200	AL100/T5U50/7PRS	100	120-277V	5000K	70	11172	100,000	0-10V	250W MH	Premium	
10212	AL150/T5U40/7PRS	150	120-277V	4000K	70	18763	100,000	0-10V	320W PSMH	Premium	
10202	AL150/T5U50/7PRS	150	120-277V	5000K	70	19007	100,000	0-10V	320W PSMH	Premium	
10214	AL200/T5U40/7PRS	200	120-277V	4000K	70	24098	100,000	0-10V	400W MH	Premium	
10204	AL200/T5U50/7PRS	200	120-277V	5000K	70	24411	100,000	0-10V	400W MH	Premium	
10216	AL240/T5U40/7PRS	240	120-277V	4000K	70	31080	100,000	0-10V	600W MH	Premium	
10206	AL240/T5U50/7PRS	240	120-277V	5000K	70	31484	100,000	0-10V	600W MH	Premium	
10218	AL300/T5U40/7PRS	300	120-277V	4000K	70	38165	100,000	0-10V	750W PSMH	Premium	
10208	AL300/T5U50/7PRS	300	120-277V	5000K	70	38661	100,000	0-10V	750W PSMH	Premium	

Available Accessories

Product #	Product Code	Description
10197	MS/QCKCNT1	Motion Sensor; Quick Connect Size 1; Multi-Level Programmable Sensor and Driver Door for 100W Models
10198	MS/QCKCNT2	Motion Sensor; Quick Connect Size 2; Multi-Level Programmable Sensor and Driver Door for 150W & 200W Models
10199	MS/QCKCNT3	Motion Sensor; Quick Connect Size 3; Multi-Level Programmable Sensor and Driver Door for 240W & 300W Models
10192	MS/RC100	Remote Control Programmer
10231	PC/JL205C	Photocell; Twist Lock, 120-277V
20260	PC/TW480V	Photocell; Twist Lock, 480VAC

¹ Useful Life is defined as the point in time at which the LED will maintain at least 70% of its initial lumens. The LED will continue to operate past this point at decreased light levels.
² May not be compatible with all Dimming systems, Dimming performance may vary by system. Please check www.halcolighting.com for up-to-date dimmer compatibility information. Use on incompatible systems may shorten lamp life.
³ To view our DLC qualified products, please consult the DLC Qualified Products List at www.designlights.org/qpl

ProLED Select Wallpack Series



Product #	Product Code	Wattage	Voltage	Color Temp.	CRI	Lumens	Useful Life ¹	Dimmable ²	Equivalent Wattage	DLC Qualified ³
10352	WPFS-LW/3CCTU	28	120-277V	3000K	70	3360	100,000	No	100W MH	Premium
		40		4000K		4800			150W MH	
		60		5000K		7200			250W MH	
10353	WPFS-HW/3CCTU	80	120-277V	3000K	70	9600	100,000	No	320W PSMH	Premium
		100		4000K		12000			400W MH	
				5000K						

Available Accessories

Product #	Product Code	Description
10141	PC/120277	Button Photocell, 120-277V

ProLED Adjustable Full-Cutoff Wallpack



Product #	Product Code	Wattage	Voltage	Color Temp.	CRI	Lumens	Useful Life ¹	Dimmable ²	Equivalent Wattage	DLC Qualified ³
10275	WP-FCA12U30	12	120-277V	3000K	70	1440	100,000	No	50W MH	Premium
10334	WP-FCA12U40	12	120-277V	4000K	70	1458	100,000	No	50W MH	Premium
10279	WP-FCA12U50	12	120-277V	5000K	70	1458	100,000	No	50W MH	Premium
10276	WP-FCA24U30	24	120-277V	3000K	70	2718	100,000	No	100W MH	Premium
10335	WP-FCA24U40	24	120-277V	4000K	70	2716	100,000	No	100W MH	Premium
10280	WP-FCA24U50	24	120-277V	5000K	70	2716	100,000	No	100W MH	Premium
10277	WP-FCA50U30	50	120-277V	3000K	70	5515	100,000	0-10V	150W MH	Premium
10336	WP-FCA50U40	50	120-277V	4000K	70	6111	100,000	0-10V	150W MH	Premium
10281	WP-FCA50U50	50	120-277V	5000K	70	6111	100,000	0-10V	150W MH	Premium
10278	WP-FCA75U30	75	120-277V	3000K	70	7960	100,000	0-10V	250W MH	Standard
10337	WP-FCA75U40	75	120-277V	4000K	70	8683	100,000	0-10V	250W MH	Standard
10282	WP-FCA75U50	75	120-277V	5000K	70	8683	100,000	0-10V	250W MH	Standard

Available Accessories

Product #	Product Code	Description
10141	PC/120277	Button Photocell, 120-277V

ProLED Mini Wallpack



Product #	Product Code	Wattage	Voltage	Color Temp.	CRI	Lumens	Useful Life ¹	Dimmable ²	Equivalent Wattage	DLC Qualified ³
10171	MWP12/U40BZ/PC	12	120-277V	4000K	70	1579	50,000	No	50W MH	Premium
10146	MWP12/U50BZ/PC	12	120-277V	5000K	70	1579	50,000	No	50W MH	Premium
10172	MWP24/U40BZ/PC	24	120-277V	4000K	70	2844	50,000	No	100W MH	Premium
10147	MWP24/U50BZ/PC	24	120-277V	5000K	70	2844	50,000	No	100W MH	Premium

¹ Useful Life is defined as the point in time at which the LED will maintain at least 70% of its initial lumens. The LED will continue to operate past this point at decreased light levels.

² May not be compatible with all Dimming systems, Dimming performance may vary by system. Please check www.halcolighting.com for up-to-date dimmer compatibility information. Use on incompatible systems may shorten lamp life.

³ To view our DLC qualified products, please consult the DLC Qualified Products List at www.designlights.org/qpl

OUTDOOR LUMINAIRES

Flood Light

ProLED Select Flood Series



Product #	Product Code	Wattage	Voltage	Color Temp.	CRI	Lumens	Useful Life ¹	Dimmable ²	Equivalent Wattage	DLC Qualified ³
10339	FLFS12/3CCTU/KN	12	120-277V	3000K 4000K 5000K	70	1560	100,000	No	50W MH	Premium
10340	FLFS12/3CCTU/YK	12	120-277V	3000K 4000K 5000K	70	1560	100,000	No	50W MH	Premium
10341	FLFS30/3CCTU/KN	30	120-277V	3000K 4000K 5000K	70	3900	100,000	No	100W MH	Premium
10342	FLFS30/3CCTU/YK	30	120-277V	3000K 4000K 5000K	70	3900	100,000	No	100W MH	Premium
10343	FLFS50/3CCTU/KN	50	120-277V	3000K 4000K 5000K	70	6500	100,000	No	150W MH	Premium
10344	FLFS50/3CCTU/YK	50	120-277V	3000K 4000K 5000K	70	6500	100,000	No	150W MH	Premium
10345	FLFS70/3CCTU/SF	70	120-277V	3000K 4000K 5000K	70	9100	100,000	0-10V	250W MH	Premium
10346	FLFS70/3CCTU/YK	70	120-277V	3000K 4000K 5000K	70	9100	100,000	0-10V	250W MH	Premium
10347	FLFS100/3CCTU/SF	100 100	120-277V	3000K 4000K 5000K	>70	13000	>100,000	0-10V	320W MH PSMH	Premium
10348	FLFS100/3CCTU/YK	100	120-277V	3000K 4000K 5000K	>70	13000	>100,000	0-10V	320W MH PSMH	Premium

ProLED High Lumen Flood Light



Product #	Product Code	Wattage	Voltage	Color Temp.	CRI	Lumens	Useful Life ¹	Dimmable ²	Equivalent Wattage	DLC Qualified ³
10349	FL150/U50/SF	150	120-277V	5000K	>70	19500	>100,000	0-10V	400W MH	Premium
10350	FL150/U50/YK	150	120-277V	5000K	>70	19500	>100,000	0-10V	400W MH	Premium

Available Accessories

Product #	Product Code	Description
10141	PC/120277	Button Photocell, 120-277V

¹ Useful Life is defined as the point in time at which the LED will maintain at least 70% of its initial lumens. The LED will continue to operate past this point at decreased light levels.

² May not be compatible with all Dimming systems, Dimming performance may vary by system. Please check www.halcolighting.com for up-to-date dimmer compatibility information. Use on incompatible systems may shorten lamp life.

³ To view our DLC qualified products, please consult the DLC Qualified Products List at www.designlights.org/qpl

OUTDOOR LUMINAIRES

Parking Garage/Canopy

ProLED CSP Series Slim Parking Garage Canopy



Product #	Product Code	Wattage	Voltage	Color Temp.	CRI	Lumens	Useful Life ¹	Dimmable ²	Equivalent Wattage	DLC Qualified ³
Parking Garage Distribution										
10284	CSP/28U40	28	120-277V	4000K	70	3267	100,000	0-10V	150W MH	Premium
10290	CSP/28U40/MS	28	120-277V	4000K	70	3267	100,000	0-10V	150W MH	Premium
10287	CSP/28U50	28	120-277V	5000K	70	3364	100,000	0-10V	150W MH	Premium
10293	CSP/28U50/MS	28	120-277V	5000K	70	3364	100,000	0-10V	150W MH	Premium
10285	CSP/40U40	40	120-277V	4000K	70	4718	100,000	0-10V	175W MH	Premium
10291	CSP/40U40/MS	40	120-277V	4000K	70	4718	100,000	0-10V	175W MH	Premium
10288	CSP/40U50	40	120-277V	5000K	70	4760	100,000	0-10V	175W MH	Premium
10294	CSP/40U50/MS	40	120-277V	5000K	70	4760	100,000	0-10V	175W MH	Premium
10286	CSP/60U40	60	120-277V	4000K	70	7088	100,000	0-10V	250W MH	Premium
10292	CSP/60U40/MS	60	120-277V	4000K	70	7088	100,000	0-10V	250W MH	Premium
10289	CSP/60U50	60	120-277V	5000K	70	7088	100,000	0-10V	250W MH	Premium
10295	CSP/60U50/MS	60	120-277V	5000K	70	7088	100,000	0-10V	250W MH	Premium

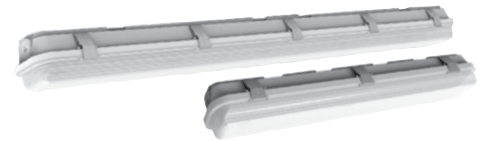
Available Accessories

Product #	Product Code	Description
10296	CSC/LENS	Slim Canopy; Lens Canopy Distribution
10297	CSBBU/KIT	Slim Canopy; Emergency Battery Backup Kit, 8W, 120-277V
10141	PC/120277	Button Photocell, 120-277V

INDOOR LUMINAIRES

Linear Vaportight & Round High Bay

ProLED HLVT Series Linear Vaportight



Product #	Product Code	Wattage	Voltage	Color Temp.	CRI	Lumens	Useful Life ¹	Dimmable ²	Equivalent Wattage	DLC Qualified ³
10314	HLVT2/25U40	25	120-277V	4000K	80	3250	100,000	0-10V	2 x 17W T8	Premium
10315	HLVT2/25U50	25	120-277V	5000K	80	3250	100,000	0-10V	2 x 17W T8	Premium
10316	HLVT4/40U40	40	120-277V	4000K	80	5200	100,000	0-10V	3 x 32W T8	Premium
10317	HLVT4/40U50	40	120-277V	5000K	80	5200	100,000	0-10V	3 x 32W T8	Premium
10355	HLVT8/72U40	72	120-277V	4000K	80	9360	100,000	0-10V	2 x 59W T8	Premium
10356	HLVT8/72U50	72	120-277V	5000K	80	9360	100,000	0-10V	2 x 59W T8	Premium

Available Accessories

Product #	Product Code	Description
90310	BBU/EM8WU	Battery Backup; Emergency 8W, 120-277V, LIFEP04 Battery, 90 Minute Backup
10311	ACC/12IN	Aircraft Cable; 12 inches, 1 set
10318	MWMS/IB/MC601V	Microwave Motion Sensor; Installation Bracket; Merrytek MC601V
10313	MWMS/MC601V	Microwave Motion Sensor; Merrytek MC601V

ProLED RHB Series Round High Bay



Product #	Product Code	Wattage	Voltage	Color Temp.	CRI	Lumens	Useful Life ¹	Dimmable ²	Equivalent Wattage	DLC Qualified ³
10253	RHB100/110U/40	100	120-277V	4000K	80	12968	100,000	0-10V	250W MH	Premium
10254	RHB100/110U/50	100	120-277V	5000K	80	13195	100,000	0-10V	250W MH	Premium
10255	RHB150/110U/40	150	120-277V	4000K	80	19744	100,000	0-10V	400W MH	Premium
10256	RHB150/110U/50	150	120-277V	5000K	80	20101	100,000	0-10V	400W MH	Premium
10257	RHB200/110U/40	200	120-277V	4000K	80	26588	100,000	0-10V	600W MH	Premium
10258	RHB200/110U/50	200	120-277V	5000K	80	27038	100,000	0-10V	600W MH	Premium
10259	RHB240/110U/40	240	120-277V	4000K	>80	30673	>100,000	0-10V	750W PSMH	Premium
10260	RHB240/110U/50	240	120-277V	5000K	>80	31576	>100,000	0-10V	750W PSMH	Premium

¹ Useful Life is defined as the point in time at which the LED will maintain at least 70% of its initial lumens. The LED will continue to operate past this point at decreased light levels.

² May not be compatible with all Dimming systems, Dimming performance may vary by system. Please check www.halcolighting.com for up-to-date dimmer compatibility information. Use on incompatible systems may shorten lamp life.

³ To view our DLC qualified products, please consult the DLC Qualified Products List at www.designlights.org/qpl

ProLED RHB Series Round High Bay Available Accessories listed on next page

INDOOR LUMINAIRES Round High Bay Accessories, Premium Linear High Bay

ProLED RHB Series Round High Bay Available Accessories

Product #	Product Code	Description
10262	RHB100/RFRALU/90D/S	Round High Bay 100W; 90 Degree, Aluminum Reflector, Silver
10263	RHB150/RFRALU/90D/S	Round High Bay 150W; 90 Degree, Aluminum Reflector, Silver
10264	RHB200240/RFRALU/90D/S	Round High Bay 200W/240W; 90 Degree, Aluminum Reflector, Silver
10265	RHB100/RFRPC/90D	Round High Bay 100W; 90 Degree, Poly Carbonate Reflector
10266	RHB150/RFRPC/90D	Round High Bay 150W; 90 Degree, Poly Carbonate Reflector
10267	RHB200240/RFRPC/90D	Round High Bay 200W/240W; 90 Degree, Poly Carbonate Reflector
10268	RHB100/WG	Round High Bay 100W; Wire Guard
10269	RHB150/WG	Round High Bay 150W; Wire Guard
10270	RHB200240/WG	Round High Bay 200W/240W; Wire Guard
10271	RHB/MSKIT	Motion Sensor; 12V Microwave Sensor Kit
10272	RHB/BBU/25W	Emergency Battery Backup, UL Listed, 25W Driver
10151	RM/MH01	Remote Control Programming; MS/MC054V

ProLED Premium Linear High Bay Series

Ordering Matrix



Family	LED Modules /	Wattage /	Voltage	CCT.	Optics /	Lens /	BBU ¹ /	Controls /	Cord Set
HLHB	1	101	U	50					
HLHB = Halco Linear High Bay	1 = 2 2 = 4 3 = 6	101 = 101W 161 = 161W 201 = 201W 241 = 241W 301 = 301W	U = 120-277V HV = 347-480V	50 = 5000K	Omit = 90° AL = 45°	Omit = None FL = Frosted Lens	Omit = None EM = Battery Backup	Omit = None MS = Bi-Level Motion Sensor	Omit = None CO61 = 6ft 120V Cord & L5-15P Plug CO62 = 6ft 277V Cord & L7-15P Plug

Quick Ship Product

Product Code	Wattage	Volts	CCT.	CRI	Lumen Output	Useful Life	Dimmable	DLC Qualified
HLHB1/101U50	101	120-277V	5000K	80	14,604	100,000	0-10V	Premium
HLHB2/141U50	141	120-277V	5000K	80	19,909	100,000	0-10V	Premium
HLHB2/161U50	161	120-277V	5000K	80	22,862	100,000	0-10V	Premium
HLHB2/201U50	201	120-277V	5000K	80	28,602	100,000	0-10V	Premium
HLHB2/241U50	241	120-277V	5000K	80	35,427	100,000	0-10V	Premium
HLHB2/301U50	301	120-277V	5000K	80	44,247	100,000	0-10V	Premium

Available Accessories

Product #	Product Code	Description
99986	LHB/MC	Motion Control Sensor LSXR 610 HL
10425	HLHB1/WG	HALCO PREMIER LINEAR HIGH BAY; SIZE 1 WIRE GUARD SET
10426	HLHB2/WG	HALCO PREMIER LINEAR HIGH BAY; SIZE 2 WIRE GUARD SET
10427	HLHB3/WG	HALCO PREMIER LINEAR HIGH BAY; SIZE 3 WIRE GUARD SET
10428	HLHB/PMK	HALCO PREMIER LINEAR HIGH BAY; PENDANT MOUNT KIT
10429	HLHB/FRSTLENS	HALCO PREMIER LINEAR HIGH BAY; SIZE 1 & 2 & 3 FROSTED LENS
10431	HLHB/45DOPTIC	HALCO PREMIER LINEAR HIGH BAY; 45 DEGREE NARROW OPTIC
10432	ASS/DRVR/VEL80170HVHDA	ASSEMBLY COMPONENT: 480V DRIVER, OEM MODEL VEL80170HVHDA-10V-35
10433	ASS/DRVR/VEL100240HVHDA	ASSEMBLY COMPONENT: 480V DRIVER, OEM MODEL VEL100240HVHDA-10V-1

¹ Useful Life is defined as the point in time at which the LED will maintain at least 70% of its initial lumens. The LED will continue to operate past this point at decreased light levels.

² May not be compatible with all Dimming systems, Dimming performance may vary by system. Please check www.halcolighting.com for up-to-date dimmer compatibility information. Use on incompatible systems may shorten lamp life.

³ To view our DLC qualified products, please consult the DLC Qualified Products List at www.designlights.org/qpl

ProLED Linear High Bay Series



Ordering Matrix

Example: LHB2/161/850/UNV/LED2

Product Series	Wattage	CRI	CCT	Voltage	Options
LHB2	/ 161 /	8	50	/ UNV /	LED2
LHB1=Small Linear High Bay	111=111 Watt	8=80 CRI	50=5000K	UNV=120-277V	LED2=Standard Item, No Adder Options
LHB2=Medium Linear High Bay	161=161 Watt				MS=Motion Sensor
LHB3=Large Linear High Bay	221=221Watt				C0612V= 6' Cord, 120V Twist Lock Plus
					C0627V= 6' Cord, 277V Twist Lock Plus
					SDT=Stepdown Transformer 480V to 277V
					EM=Battery Backup

Notes: Motion Sensor options are assembled to order locally in the United States. Cord and Plug options are assembled to order locally in the United States. Stepdown Transformer option is assembled to order locally in the United States. Battery Backup option is assembled to order locally in the United States.

Quick Ship Product

Product #	Product Code	Wattage	Voltage	Color Temp.	CRI	Lumens	Useful Life ¹	Dimmable ²	Equivalent Wattage	DLC Qualified ³
99649	LHB1/111/850/UNV/LED2	111	120-277V	5000K	80	14478	100,000	0-10V	4-lamp (T8), 175W HID	Premium
99650	LHB2/161/850/UNV/LED2	161	120-277V	5000K	80	22025	100,000	0-10V	4-lamp (T5HO), 6-lamp (T8), 250W HID	Premium
99651	LHB3/221/850/UNV/LED2	221	120-277V	5000K	80	29467	100,000	0-10V	6-lamp (T5HO), 8-lamp (T8), 400W HID	Premium

Available Accessories

Product #	Product Code	Description
99986	LHB/MC	Multi-Level Motion Sensor, End Mounted PIR
99652	LHB/PMA	Pendant Mount Kit
81981	VPL/EM	Emergency Battery
99654	LHB1/WG	111W Wire Guard
99655	LHB2/WG	161W Wire Guard
99656	LHB3/WG	221W Wire Guard

ProLED Linear Wraps



Product #	Product Code	Wattage	Voltage	Color Temp.	CRI	Lumens	Useful Life ¹	Dimmable ²	Equivalent Wattage	DLC Qualified ³
Traditional Prismatic Lens										
10302	LWA-P20U2-40	20	120-277V	4000K	80	2442	50,000	0-10V	(2) 17W T8	Standard
10307	LWA-P20U2-50	20	120-277V	5000K	80	2466	50,000	0-10V	(2) 17W T8	Standard
10299	LWA-P40U4-40	40	120-277V	4000K	80	4944	50,000	0-10V	(2) 32W T8	Standard
10304	LWA-P40U4-50	40	120-277V	5000K	80	5008	50,000	0-10V	(2) 32W T8	Standard
Architectural Diffused Lens										
10300	LWA-D23U2-40	23	120-277V	4000K	80	3073	100,000	0-10V	(2) 17W T8	Premium
10305	LWA-D23U2-50	23	120-277V	5000K	80	3125	100,000	0-10V	(2) 17W T8	Premium
10301	LWA-D46U4-40	46	120-277V	4000K	80	6242	100,000	0-10V	(2) 32W T8	Premium
10306	LWA-D46U4-50	46	120-277V	5000K	80	6293	100,000	0-10V	(2) 32W T8	Premium

Available Accessories

Product #	Product Code	Description
10310	BBU/EM8WU	Battery Backup; Emergency 8W, 120-277V, LIFEP04 Battery, 90 Minute Backup
10311	ACC/12IN	Aircraft Cable; 12 inches, 1 set
10312	LWA-D/ JB	Linear Wrap; Architectural Diffused Lens; Joiner Bracket, 1 pair (2pcs)
10313	MWMS/MC601V	Microwave Motion Sensor; Merrytek MC601V
10318	MWMS/IB/MC601V	Microwave Motion Sensor; Installation Bracket; Merrytek MC601V

¹ Useful Life is defined as the point in time at which the LED will maintain at least 70% of its initial lumens. The LED will continue to operate past this point at decreased light levels.

² May not be compatible with all Dimming systems, Dimming performance may vary by system. Please check www.halcolighting.com for up-to-date dimmer compatibility information. Use on incompatible systems may shorten lamp life.

³ To view our DLC qualified products, please consult the DLC Qualified Products List at www.designlights.org/qpl

INDOOR LUMINAIRES Linear Strip, Linear Strip Retrofits & Edge Lit Panels

ProLED Linear Strip



Product #	Product Code	Wattage	Voltage	Color Temp.	CRI	Lumens	Useful Life ¹	Dimmable ²	Equivalent Wattage	DLC Qualified ³
10240	LS4/36U40	36	120-277V	4000K	80	4903	100,000	0-10V	(2) 32W T8	Premium
10241	LS4/36U50	36	120-277V	5000K	80	4910	100,000	0-10V	(2) 32W T8	Premium
10243	LS8/72U40	72	120-277V	4000K	80	9806	100,000	0-10V	(2) 59W T8	Premium
10244	LS8/72U50	72	120-277V	5000K	80	9820	100,000	0-10V	(2) 59W T8	Premium

Available Accessories

Product #	Product Code	Description
10228	LS4/LENS	Linear Strip; 4 Foot Acrylic Lens
10229	LS8/LENS	Linear Strip; 8 Foot Acrylic Lens
10309	LS-LCK	Linear Strip; Linear Connection Kit
10310	BBU/EM8WU	Battery Backup; Emergency 8W, 120-277V, LIFEP04 Battery, 90 Minute Backup
10311	ACC/12IN	Aircraft Cable; 12 inches, 1 set
10318	MWMS/IB/MC601V	Microwave Motion Sensor; Installation Bracket; Merrytek MC601V
10313	MWMS/MC601V	Microwave Motion Sensor; Merrytek MC601V

ProLED Linear Strip Retrofit



Product #	Product Code	Wattage	Voltage	Color Temp.	CRI	Lumens	Useful Life ¹	Dimmable ²	Equivalent Wattage	DLC Qualified ³
10247	LSRK4/36U40	36	120-277V	4000K	80	4896	50,000	0-10V	(2) 32W T8	Premium
10248	LSRK4/36U50	36	120-277V	5000K	80	4906	50,000	0-10V	(2) 32W T8	Premium
10250	LSRK8/72U40	72	120-277V	4000K	80	9792	50,000	0-10V	(2) 59W T8	Premium
10251	LSRK8/72U50	72	120-277V	5000K	80	9812	50,000	0-10V	(2) 59W T8	Premium

ProLED Select Edge Lit Flat Panel: Field Selectable Light Output & CCT



Product #	Product Code	Wattage	Voltage	Color Temp.	CRI	Lumens	Useful Life ¹	Dimmable ²	Equivalent Wattage	DLC Qualified ³
1' x 4'										
10330	14FSEPL/8DU	25	120-277V	3500K	80	3300-5000	50,000	0-10V	(2) 32W T8	Standard
		30		4000K						
		40		5000K						
2' x 2'										
10331	22FSEPL8DU	25	120-277V	3500K	80	3300-5000	50,000	0-10V	(2) 32W T8	Standard
		30		4000K						
		40		5000K						
2' x 4'										
10332	24FSEPL/8DU	30	120-277V	3500K	80	3500-5500	50,000	0-10V	(4) 32W T8	Standard
		35		4000K						
		35		5000K						

Available Accessories

Product #	Product Code	Description
81981	VPL/EM/LED3	Emergency Battery; 16W, 120-277V

¹ Useful Life is defined as the point in time at which the LED will maintain at least 70% of its initial lumens. The LED will continue to operate past this point at decreased light levels.

² May not be compatible with all Dimming systems, Dimming performance may vary by system. Please check www.halcolighting.com for up-to-date dimmer compatibility information. Use on incompatible systems may shorten lamp life.

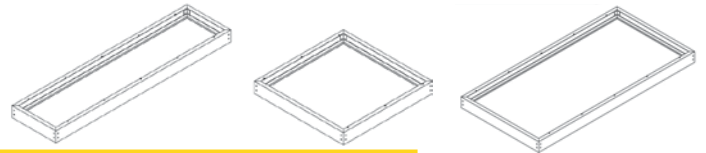
³ To view our DLC qualified products, please consult the DLC Qualified Products List at www.designlights.org/qpl

ProLED Edge Lit Flat Panel



Product #	Product Code	Wattage	Voltage	Color Temp.	CRI	Lumens	Useful Life ¹	Dimmable ²	Equivalent Wattage	DLC Qualified ³
1' x 4'										
81982	14EPL30/835/LED	30	120-277V	3500K	82	3000	50,000	0-10V	(2) 32W T8	Standard
81983	14EPL30/840/LED	30	120-277V	4000K	82	3050	50,000	0-10V	(2) 32W T8	Standard
81984	14EPL30/850/LED	30	120-277V	5000K	82	3150	50,000	0-10V	(2) 32W T8	Standard
1' x 4' with Emergency Backup										
81988	14EPL30/835/EM/LED	30	120-277V	3500K	82	3000	50,000	0-10V	(2) 32W T8	Standard
81989	14EPL30/840/EM/LED	30	120-277V	4000K	82	3050	50,000	0-10V	(2) 32W T8	Standard
81990	14EPL30/850/EM/LED	30	120-277V	5000K	82	3150	50,000	0-10V	(2) 32W T8	Standard
2' x 2'										
81963	22EPL30/835/LED	30	120-277V	3500K	82	3000	50,000	0-10V	(2) 32W T8	Standard
81964	22EPL30/840/LED	30	120-277V	4000K	82	3050	50,000	0-10V	(2) 32W T8	Standard
81965	22EPL30/850/LED	30	120-277V	5000K	82	3150	50,000	0-10V	(2) 32W T8	Standard
2' x 2' with Emergency Backup										
81969	22EPL30/835/EM/LED	30	120-277V	3500K	82	3000	50,000	0-10V	(2) 32W T8	Standard
81970	22EPL30/840/EM/LED	30	120-277V	4000K	82	3050	50,000	0-10V	(2) 32W T8	Standard
81971	22EPL30/850/EM/LED	30	120-277V	5000K	82	3150	50,000	0-10V	(2) 32W T8	Standard
2' x 4'										
81966	24EPL50/835/LED	50	120-277V	3500K	82	5000	50,000	0-10V	(4) 32W T8	Standard
81967	24EPL50/840/LED	50	120-277V	4000K	82	5100	50,000	0-10V	(4) 32W T8	Standard
81968	24EPL50/850/LED	50	120-277V	5000K	82	5300	50,000	0-10V	(4) 32W T8	Standard
2' x 4' with Emergency Backup										
81972	24EPL50/835/EM/LED	50	120-277V	3500K	82	5000	50,000	0-10V	(4) 32W T8	Standard
81973	24EPL50/840/EM/LED	50	120-277V	4000K	82	5100	50,000	0-10V	(4) 32W T8	Standard
81974	24EPL50/850/EM/LED	50	120-277V	5000K	82	5300	50,000	0-10V	(4) 32W T8	Standard

Surface Mount Kit



Product #	Product Code	Description
81985	14EPL/SMK	1' x 4' Surface Mount Kit for LED Panels, White (48.12" x 12.06" x 4.5")
81986	22EPL/SMK	2' x 2' Surface Mount Kit for LED Panels, White (24.06" x 24.06" x 4.5")
81987	24EPL/SMK	2' x 4' Surface Mount Kit for LED Panels, White (48.12" x 24.06" x 4.5")

¹ Useful Life is defined as the point in time at which the LED will maintain at least 70% of its initial lumens. The LED will continue to operate past this point at decreased light levels.

² May not be compatible with all Dimming systems, Dimming performance may vary by system. Please check www.halcolighting.com for up-to-date dimmer compatibility information. Use on incompatible systems may shorten lamp life.

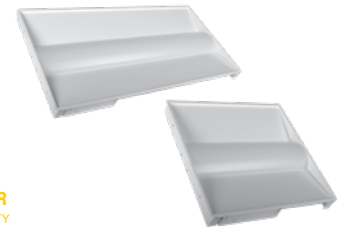
³ To view our DLC qualified products, please consult the DLC Qualified Products List at www.designlights.org/qpl

ProLED Select Backlit Panel: Field Selectable CCT



Product #	Product Code	Wattage	Voltage	Color Temp.	CRI	Lumens	Useful Life ¹	Dimmable ²	Equivalent Wattage	DLC Qualified ³
1' x 4'										
10363	14FSBPL/30U8D	30	120-277V	3500K 4000K 5000K	80	3300	50,000	0-10V	(2) 32W T8	Standard
2' x 2'										
10364	22FSBPL/30U8D	30	120-277V	3500K 4000K 5000K	80	3300	50,000	0-10V	(2) 32W T8	Standard
2' x 4'										
10365	24FSBPL/50U8D	50	120-277V	3500K 4000K 5000K	80	5500	50,000	0-10V	(4) 32W T8	Standard

ProLED Volumetric Panel Light Series



Product #	Product Code	Wattage	Voltage	Color Temp.	CRI	Lumens	Useful Life ¹	Dimmable ²	Equivalent Wattage	DLC Qualified ³
2' x 2'										
81975	22VPL29/835/LED3	29	120-277V	3500K	80	3787	75,000	0-10V	(2) 32W T8	Premium
81976	22VPL29/840/LED3	29	120-277V	4000K	80	3805	75,000	0-10V	(2) 32W T8	Premium
81977	22VPL29/850/LED3	29	120-277V	5000K	80	3876	75,000	0-10V	(2) 32W T8	Premium
2 x 4'										
81978	24VPL49/835/LED3	49	120-277V	3500K	80	6112	75,000	0-10V	(4) 32W T8	Premium
81979	24VPL49/840/LED3	49	120-277V	4000K	80	6235	75,000	0-10V	(4) 32W T8	Premium
81980	24VPL49/850/LED3	49	120-277V	5000K	80	6315	75,000	0-10V	(4) 32W T8	Premium

Available Accessories

Product #	Product Code	Description
81981	VPL/EM/LED3	Emergency Battery; 16W, 120-277V

¹ Useful Life is defined as the point in time at which the LED will maintain at least 70% of its initial lumens. The LED will continue to operate past this point at decreased light levels.

² May not be compatible with all Dimming systems, Dimming performance may vary by system. Please check www.halcolighting.com for up-to-date dimmer compatibility information. Use on incompatible systems may shorten lamp life.

³ To view our DLC qualified products, please consult the DLC Qualified Products List at www.designlights.org/qpl

INDOOR LUMINAIRES Troffer Retrofit Kit & Commercial Downlight Retrofit

ProLED Select Troffer Retrofit Kit RVMV Series: Field Selectable Light Output



Product #	Product Code	Wattage	Voltage	Color Temp.	CRI	Lumens	Useful Life ¹	Dimmable ²	Equivalent Wattage	DLC Qualified ³
2' x 2'										
10400	RVMW22/29U35	19 24 29	120-277V	3500K	80	2643-4126	100,000	0-10V	(3) 17W T8	Premium
10401	RVMW22/29U40	19 24 29	120-277V	4000K	80	2643-4126	100,000	0-10V	(3) 17W T8	Premium
10402	RVMW22/29U50	19 24 29	120-277V	5000K	80	2643-4126	100,000	0-10V	(3) 17W T8	Premium
2' x 4'										
10403	RVMW24/39U35	24 32 39	120-277V	3500K	80	3335-5526	100,000	0-10V	(3) 32W T8	Standard
10404	RVMW24/39U40	24 32 39	120-277V	4000K	80	3335-5526	100,000	0-10V	(3) 32W T8	Standard
10405	RVMW24/39U50	24 32 39	120-277V	5000K	80	3335-5526	100,000	0-10V	(3) 32W T8	Standard

ProLED Select Commercial Downlight Retrofit: Field Selectable Wattage and CCT



Product #	Product Code	Wattage	Voltage	Color Temp.	CRI	Lumens	Useful Life	Dimmable	Pkg QTY	Fixture Size	ENERGY STAR
82985	FSCDL6/MV/01V/LED	10 15 22 5000	120-277V	3000 4000 5000	90	900-1950	50,000	0-10V	1/6	6"	YES
82986	FSCDL8/MV/01V/LED	12 20 30	120-277V	3000 4000 5000	90	1050-2300	50,000	0-10V	1/6	8"	YES

¹ Useful Life is defined as the point in time at which the LED will maintain at least 70% of its initial lumens. The LED will continue to operate past this point at decreased light levels.

² May not be compatible with all Dimming systems, Dimming performance may vary by system. Please check www.halcolighting.com for up-to-date dimmer compatibility information. Use on incompatible systems may shorten lamp life.

INDOOR LUMINAIRES

ProLED High Performance Commercial Downlights

ProLED Commercial Downlight Retrofit



Product #	Product Code	Wattage	Voltage	Color Temp.	CRI	Lumens	Useful Life ¹	Dimmable ²	Pkg. Qty.	Fixture Size	Equivalent Wattage	Energy Star
4" Commercial Downlight Retrofit												
99610	CDL4FR10/927/RTJB/LED	10	120-277V	2700K	90	700	50,000	120V Only	1/12	4"	65	Yes
99611	CDL4FR10/930/RTJB/LED	10	120-277V	3000K	90	700	50,000	120V Only	1/12	4"	65	Yes
99612	CDL4FR10/940/RTJB/LED	10	120-277V	4000K	90	700	50,000	120V Only	1/12	4"	65	Yes
99613	CDL4FR10/950/RTJB/LED	10	120-277V	5000K	90	700	50,000	120V Only	1/12	4"	65	Yes
6" Commercial Downlight Retrofit												
99614	CDL6FR15/927/RTJB/LED	15	120-277V	2700K	90	1000	50,000	120V Only	1/12	6"	120	Yes
99615	CDL6FR15/930/RTJB/LED	15	120-277V	3000K	90	1000	50,000	120V Only	1/12	6"	120	Yes
99616	CDL6FR15/940/RTJB/LED	15	120-277V	4000K	90	1000	50,000	120V Only	1/12	6"	120	Yes
99617	CDL6FR15/950/RTJB/LED	15	120-277V	5000K	90	1000	50,000	120V Only	1/12	6"	120	Yes
8" Commercial Downlight Retrofit												
99618	CDL8FR30/927/RTJB/LED	30	120-277V	2700K	90	2000	50,000	120V Only	1/6	8"	200	Yes
99619	CDL8FR30/930/RTJB/LED	30	120-277V	3000K	90	2000	50,000	120V Only	1/6	8"	200	Yes
99620	CDL8FR30/940/RTJB/LED	30	120-277V	4000K	90	2000	50,000	120V Only	1/6	8"	200	Yes
99621	CDL8FR30/950/RTJB/LED	30	120-277V	5000K	90	2000	50,000	120V Only	1/6	8"	200	Yes

ProLED High Performance Commercial Downlight Series



Product #	Product Code	Wattage	Voltage	Color Temp.	CRI	Lumens	Useful Life ¹	Dimmable ²	Pkg. Qty.	Fixture Size	Equivalent Wattage	Energy Star
8" High Performance Commercial Downlight												
99831	CDLH8AR30/827/LED	30	120-277V	2700K	80	2810	50,000	0-10V	1	8"	(2) 32W CFL	Yes
99832	CDLH8AR30/830/LED	30	120-277V	3000K	80	2810	50,000	0-10V	1	8"	(2) 32W CFL	Yes
99833	CDLH8AR30/840/LED	30	120-277V	4000K	80	2810	50,000	0-10V	1	8"	(2) 32W CFL	Yes
99834	CDLH8AR30/850/LED	30	120-277V	5000K	80	2810	50,000	0-10V	1	8"	(2) 32W CFL	Yes
99835	CDLH8AR40/827/LED	40	120-277V	2700K	80	3615	50,000	0-10V	1	8"	(2) 42W CFL	Yes
99836	CDLH8AR40/830/LED	40	120-277V	3000K	80	3615	50,000	0-10V	1	8"	(2) 42W CFL	Yes
99837	CDLH8AR40/840/LED	40	120-277V	4000K	80	3995	50,000	0-10V	1	8"	(2) 42W CFL	Yes
99838	CDLH8AR40/850/LED	40	120-277V	5000K	80	3995	50,000	0-10V	1	8"	(2) 42W CFL	Yes
99839	CDLH8AR30/827/LED/EM	30	120-277V	2700K	80	2810	50,000	0-10V	1	8"	(2) 32W CFL	Yes
99840	CDLH8AR30/830/LED/EM	30	120-277V	3000K	80	2810	50,000	0-10V	1	8"	(2) 32W CFL	Yes
99841	CDLH8AR30/840/LED/EM	30	120-277V	4000K	80	2810	50,000	0-10V	1	8"	(2) 32W CFL	Yes
99842	CDLH8AR30/850/LED/EM	30	120-277V	5000K	80	2810	50,000	0-10V	1	8"	(2) 32W CFL	Yes
99843	CDLH8AR40/827/LED/EM	40	120-277V	2700K	80	3615	50,000	0-10V	1	8"	(2) 42W CFL	Yes
99844	CDLH8AR40/830/LED/EM	40	120-277V	3000K	80	3615	50,000	0-10V	1	8"	(2) 42W CFL	Yes
99845	CDLH8AR40/840/LED/EM	40	120-277V	4000K	80	3995	50,000	0-10V	1	8"	(2) 42W CFL	Yes
99846	CDLH8AR40/850/LED/EM	40	120-277V	5000K	80	3995	50,000	0-10V	1	8"	(2) 42W CFL	Yes
10" High Performance Commercial Downlight												
99847	CDLH10AR30/827/LED	30	120-277V	2700K	80	2810	50,000	0-10V	1	10"	(2) 32W CFL	Yes
99848	CDLH10AR30/830/LED	30	120-277V	3000K	80	2810	50,000	0-10V	1	10"	(2) 32W CFL	Yes
99849	CDLH10AR30/840/LED	30	120-277V	4000K	80	2810	50,000	0-10V	1	10"	(2) 32W CFL	Yes
99850	CDLH10AR30/850/LED	30	120-277V	5000K	80	2810	50,000	0-10V	1	10"	(2) 32W CFL	Yes
99851	CDLH10AR40/827/LED	40	120-277V	2700K	80	3615	50,000	0-10V	1	10"	(2) 42W CFL	Yes
99852	CDLH10AR40/830/LED	40	120-277V	3000K	80	3615	50,000	0-10V	1	10"	(2) 42W CFL	Yes
99853	CDLH10AR40/840/LED	40	120-277V	4000K	80	3995	50,000	0-10V	1	10"	(2) 42W CFL	Yes
99854	CDLH10AR40/850/LED	40	120-277V	5000K	80	3995	50,000	0-10V	1	10"	(2) 42W CFL	Yes
99855	CDLH10AR30/827/LED/EM	30	120-277V	2700K	80	2810	50,000	0-10V	1	10"	(2) 32W CFL	Yes
99856	CDLH10AR30/830/LED/EM	30	120-277V	3000K	80	2810	50,000	0-10V	1	10"	(2) 32W CFL	Yes
99857	CDLH10AR30/840/LED/EM	30	120-277V	4000K	80	2810	50,000	0-10V	1	10"	(2) 32W CFL	Yes
99858	CDLH10AR30/850/LED/EM	30	120-277V	5000K	80	2810	50,000	0-10V	1	10"	(2) 32W CFL	Yes
99859	CDLH10AR40/827/LED/EM	40	120-277V	2700K	80	3615	50,000	0-10V	1	10"	(2) 42W CFL	Yes
99860	CDLH10AR40/830/LED/EM	40	120-277V	3000K	80	3615	50,000	0-10V	1	10"	(2) 42W CFL	Yes
99861	CDLH10AR40/840/LED/EM	40	120-277V	4000K	80	3995	50,000	0-10V	1	10"	(2) 42W CFL	Yes
99862	CDLH10AR40/850/LED/EM	40	120-277V	5000K	80	3995	50,000	0-10V	1	10"	(2) 42W CFL	Yes

¹ Useful Life is defined as the point in time at which the LED will maintain at least 70% of its initial lumens. The LED will continue to operate past this point at decreased light levels.

² May not be compatible with all Dimming systems, Dimming performance may vary by system. Please check www.halcolighting.com for up-to-date dimmer compatibility information. Use on incompatible systems may shorten lamp life.

INDOOR LUMINAIRES Select Downlight, ECO Downlight & Surface Downlight

ProLED Select Downlight Retrofit: Field Selectable CCT



Product #	Product Code	Wattage	Voltage	Color Temp.	CRI	Lumens	Useful Life	Dimmable	Pkg QTY	Fixture Size	Equivalent Wattage	ENERGY STAR
82983	FSDL4FR6/CCT/LED	6.5	120	2700	90	550	50,000	YES	1/12	4"	50	YES
				3000								
				3500								
				4000								
				5000								
82984	FSDL6FR9/CCT/LED	9	120	2700	90	770	50,000	YES	1/6	5/6"	65	YES
				3000								
				3500								
				4000								
				5001								

ProLED ECO Downlights



Product #	Product Code	Wattage	Voltage	Color Temp.	CRI	Lumens	Useful Life ¹	Dimmable ²	Pkg. Qty.	Fixture Size	Equivalent Wattage	Energy Star
4" ECO Downlights												
99633	DL4FR10/927/ECO/LED2	10	120V	2700K	90	650	50,000	Yes	1/12	4"	65	Yes
99634	DL4FR10/930/ECO/LED2	10	120V	3000K	90	650	50,000	Yes	1/12	4"	65	Yes
99635	DL4FR10/940/ECO/LED2	10	120V	4000K	90	650	50,000	Yes	1/12	4"	65	Yes
99636	DL4FR10/950/ECO/LED2	10	120V	5000K	90	650	50,000	Yes	1/12	4"	65	Yes
6" ECO Downlights												
99637	DL6FR10/927/ECO/LED2	10	120V	2700K	90	650	50,000	Yes	1/6	6"	65	Yes
99638	DL6FR10/930/ECO/LED2	10	120V	3000K	90	650	50,000	Yes	1/6	6"	65	Yes
99639	DL6FR10/940/ECO/LED2	10	120V	4000K	90	650	50,000	Yes	1/6	6"	65	Yes
99640	DL6FR10/950/ECO/LED2	10	120V	5000K	90	650	50,000	Yes	1/6	6"	65	Yes
99641	DL6FR12/927/ECO/LED2	12	120V	2700K	90	800	50,000	Yes	1/6	6"	75	Yes
99642	DL6FR12/930/ECO/LED2	12	120V	3000K	90	800	50,000	Yes	1/6	6"	75	Yes
99643	DL6FR12/940/ECO/LED2	12	120V	4000K	90	800	50,000	Yes	1/6	6"	75	Yes
99644	DL6FR12/950/ECO/LED2	12	120V	5000K	90	800	50,000	Yes	1/6	6"	75	Yes
99645	DL6FR15/927/ECO/LED2	15	120V	2700K	90	1100	50,000	Yes	1/6	6"	100	Yes
99646	DL6FR15/930/ECO/LED2	15	120V	3000K	90	1100	50,000	Yes	1/6	6"	100	Yes
99647	DL6FR15/940/ECO/LED2	15	120V	4000K	90	1100	50,000	Yes	1/6	6"	100	Yes
99648	DL6FR15/950/ECO/LED2	15	120V	5000K	90	1100	50,000	Yes	1/6	6"	100	Yes

Available Accessories

Product #	Product Code	Description
91003	ADP/DL/GU24/LED	GU24 Socket Adapter

ProLED Surface Downlight Retrofit Series



Product #	Product Code	Wattage	Voltage	Color Temp.	CRI	Lumens	Useful Life	Dimmable	Pkg QTY	Fixture Size	Equivalent Wattage	ENERGY STAR
82989	SDL6FR15/927/LED3	15	120	2700	90	1200	50,000	YES	1/12	6"	85	YES
82990	SDL6FR15/930/LED3	15	120	3000	90	1200	50,000	YES	1/12	6"	85	YES
82991	SDL6FR15/940/LED3	15	120	4000	90	1200	50,000	YES	1/12	6"	85	YES
82992	SDL6FR15/950/LED3	15	120	5000	90	1200	50,000	YES	1/12	6"	85	YES

¹ Useful Life is defined as the point in time at which the LED will maintain at least 70% of its initial lumens. The LED will continue to operate past this point at decreased light levels.

² May not be compatible with all Dimming systems, Dimming performance may vary by system. Please check www.halcolighting.com for up-to-date dimmer compatibility information. Use on incompatible systems may shorten lamp life.

³ To view our DLC qualified products, please consult the DLC Qualified Products List at www.designlights.org/qpl

INDOOR LUMINAIRES

Slim Downlights & Square Downlights

ProLED Slim Downlights



Product #	Product Code	Wattage	Voltage	Color Temp.	CRI	Lumens	Useful Life ¹	Dimmable ²	Pkg. Qty.	Fixture Size	Equivalent Wattage	Energy Star
4" ProLED Slim Downlights												
89060	DLS4FR9/RD/927/LED	9	120V	2700K	90	550	50,000	Yes	1/24	4" Round	65	Yes
89061	DLS4FR9/RD/930/LED	9	120V	3000K	90	550	50,000	Yes	1/24	4" Round	65	Yes
89062	DLS4FR9/RD/940/LED	9	120V	4000K	90	550	50,000	Yes	1/24	4" Round	65	Yes
89063	DLS4FR9/RD/950/LED	9	120V	5000K	90	550	50,000	Yes	1/24	4" Round	65	Yes
89064	DLS4FR9/SQ/927/LED	9	120V	2700K	90	550	50,000	Yes	1/24	4" Square	65	Yes
89065	DLS4FR9/SQ/930/LED	9	120V	3000K	90	550	50,000	Yes	1/24	4" Square	65	Yes
89066	DLS4FR9/SQ/940/LED	9	120V	4000K	90	550	50,000	Yes	1/24	4" Square	65	Yes
89067	DLS4FR9/SQ/950/LED	9	120V	5000K	90	550	50,000	Yes	1/24	4" Square	65	Yes
6" ProLED Slim Downlights												
89068	DLS6FR12/RD/927/LED	12	120V	2700K	90	800	50,000	Yes	1/12	6" Round	65	Yes
89069	DLS6FR12/RD/930/LED	12	120V	3000K	90	800	50,000	Yes	1/12	6" Round	65	Yes
89070	DLS6FR12/RD/940/LED	12	120V	4000K	90	800	50,000	Yes	1/12	6" Round	65	Yes
89071	DLS6FR12/RD/950/LED	12	120V	5000K	90	800	50,000	Yes	1/12	6" Round	65	Yes
89072	DLS6FR12/SQ/927/LED	12	120V	2700K	90	800	50,000	Yes	1/12	6" Square	65	Yes
89073	DLS6FR12/SQ/930/LED	12	120V	3000K	90	800	50,000	Yes	1/12	6" Square	65	Yes
89074	DLS6FR12/SQ/940/LED	12	120V	4000K	90	800	50,000	Yes	1/12	6" Square	65	Yes
89075	DLS6FR12/SQ/950/LED	12	120V	5000K	90	800	50,000	Yes	1/12	6" Square	65	Yes
89076	DLS6FR14/RD/927/LED	14	120V	2700K	90	950	50,000	Yes	1/12	6" Round	85	Yes
89077	DLS6FR14/RD/930/LED	14	120V	3000K	90	950	50,000	Yes	1/12	6" Round	85	Yes
89078	DLS6FR14/RD/940/LED	14	120V	4000K	90	950	50,000	Yes	1/12	6" Round	85	Yes
89079	DLS6FR14/RD/950/LED	14	120V	5000K	90	950	50,000	Yes	1/12	6" Round	85	Yes
89080	DLS6FR14/SQ/927/LED	14	120V	2700K	90	950	50,000	Yes	1/12	6" Square	85	Yes
89081	DLS6FR14/SQ/930/LED	14	120V	3000K	90	950	50,000	Yes	1/12	6" Square	85	Yes
89082	DLS6FR14/SQ/940/LED	14	120V	4000K	90	950	50,000	Yes	1/12	6" Square	85	Yes
89083	DLS6FR14/SQ/950/LED	14	120V	5000K	90	950	50,000	Yes	1/12	6" Square	85	Yes

ProLED Square Downlights



Product #	Product Code	Wattage	Voltage	Color Temp.	CRI	Lumens	Useful Life ¹	Dimmable ²	Pkg. Qty.	Fixture Size	Equivalent Wattage	Energy Star
99952	QDL4FR10/927/LED	10	120V	2700K	90	560	50,000	Yes	1/12	4"	50	Yes
99953	QDL4FR10/930/LED	10	120V	3000K	90	560	50,000	Yes	1/12	4"	50	Yes
99954	QDL4FR10/940/LED	10	120V	4000K	90	590	50,000	Yes	1/12	4"	50	Yes
99955	QDL4FR10/950/LED	10	120V	5000K	90	630	50,000	Yes	1/12	4"	50	Yes
99956	QDL6FR15/927/LED	15	120V	2700K	90	900	50,000	Yes	1/12	6"	65	Yes
99957	QDL6FR15/930/LED	15	120V	3000K	90	930	50,000	Yes	1/12	6"	65	Yes
99958	QDL6FR15/940/LED	15	120V	4000K	90	1000	50,000	Yes	1/12	6"	65	Yes
99959	QDL6FR15/950/LED	15	120V	5000K	90	1040	50,000	Yes	1/12	6"	65	Yes

LAMPS

HID Area Light, High Bay, High Lumen Retrofits & HID Wallpack

ProLED HID Area Light Retrofit Series



Product #	Product Code	Wattage	Base	Voltage	Color Temp.	CRI	Lumens	Useful Life ¹	Dimmable ²	Pkg. Qty.	MOL	Equivalent Wattage	DLC Qualified ³
84102	HID80/840/AL/EX39/LED	80	EX39	120-277V	4000K	82	10,400	50,000	No	1/8	8.00"	250W MH/HPS	Standard
84103	HID80/850/AL/EX39/LED	80	EX39	120-277V	5000K	82	10,400	50,000	No	1/8	8.00"	250W MH/HPS	Standard
84104	HID110/840/AL/EX39/LED	110	EX39	120-277V	4000K	82	14,300	50,000	No	1/8	8.00"	400W MH/HPS	Standard
84105	HID110/850/AL/EX39/LED	110	EX39	120-277V	5000K	82	14,300	50,000	No	1/8	8.00"	400W MH/HPS	Standard

ProLED HID High Bay Retrofit Series



Product #	Product Code	Wattage	Base	Voltage	Color Temp.	CRI	Lumens	Useful Life ¹	Dimmable ²	Pkg. Qty.	MOL	Equivalent Wattage	DLC Qualified ³
84113	HID90/840/EX39/LED	90	EX39	120-277V	4000K	84	11,970	50,000	No	1/4	9.24"	400W MH/HPS	Standard
84114	HID90/850/EX39/LED	90	EX39	120-277V	5000K	84	12,150	50,000	No	1/4	9.24"	400W MH/HPS	Standard
84115	HID120/840/EX39/LED	120	EX39	120-277V	4000K	84	17,760	50,000	No	1/4	9.24"	600W MH/HPS	Standard
84116	HID120/850/EX39/LED	120	EX39	120-277V	5000K	84	18,000	50,000	No	1/4	9.24"	600W MH/HPS	Standard

ProLED HID High Lumen Retrofit Series



Product #	Product Code	Wattage	Base	Voltage	Color Temp.	CRI	Lumens	Useful Life ¹	Dimmable ²	Pkg. Qty.	MOL	Equivalent Wattage	DLC Qualified ³
84106	HID80/840/MV2/EX39/LED	80	EX39	120-277V	4000K	82	10,800	50,000	No	1/8	10.51"	320W MH/HPS	Standard
84107	HID80/850/MV2/EX39/LED	80	EX39	120-277V	5000K	82	10,800	50,000	No	1/8	10.51"	320W MH/HPS	Standard
84108	HID100/840/MV2/EX39/LED	100	EX39	120-277V	4000K	82	13,500	50,000	No	1/8	10.51"	400W MH/HPS	Standard
84109	HID100/850/MV2/EX39/LED	100	EX39	120-277V	5000K	82	13,500	50,000	No	1/8	10.51"	400W MH/HPS	Standard
84110	HID120/840/MV2/EX39/LED	120	EX39	120-277V	4000K	82	16,200	50,000	No	1/8	11.30"	600W MH/HPS	Standard
84111	HID120/850/MV2/EX39/LED	120	EX39	120-277V	5000K	82	16,200	50,000	No	1/8	11.30"	600W MH/HPS	Standard

ProLED HID Wallpack Retrofit Series



Product #	Product Code	Wattage	Base	Voltage	Color Temp.	CRI	Lumens	Useful Life ¹	Dimmable ²	Pkg. Qty.	MOL	Equivalent Wattage	DLC Qualified ³
84024	HID20/840/MV/LED	20	E26	120-277V	4000K	82	3000	50,000	No	1/8	5.15"	70W MH/HPS	No
84025	HID20/850/MV/LED	20	E26	120-277V	5000K	82	3000	50,000	No	1/8	5.15"	70W MH/HPS	No
84026	HID40/840/MV/LED	40	E26	120-277V	4000K	82	6000	50,000	No	1/8	7.79"	175W MH/HPS	No
84028	HID40/850/MV/LED	40	E26	120-277V	5000K	82	6000	50,000	No	1/8	7.79"	175W MH/HPS	No
84027	HID40/840/MV/EX39/LED	40	EX39	120-277V	4000K	82	6000	50,000	No	1/8	8.46"	175W MH/HPS	Standard
84029	HID40/850/MV/EX39/LED	40	EX39	120-277V	5000K	82	6000	50,000	No	1/8	8.46"	175W MH/HPS	Standard
84030	HID60/840/MV/LED	60	E26	120-277V	4000K	82	9000	50,000	No	1/8	9.96"	250W MH/HPS	No
84032	HID60/850/MV/LED	60	E26	120-277V	5000K	82	9000	50,000	No	1/8	9.96"	250W MH/HPS	No
84031	HID60/840/MV/EX39/LED	60	EX39	120-277V	4000K	82	9000	50,000	No	1/8	10.70"	250W MH/HPS	Standard
84033	HID60/850/MV/EX39/LED	60	EX39	120-277V	5000K	82	9000	50,000	No	1/8	10.70"	250W MH/HPS	Standard

¹ Useful Life is defined as the point in time at which the LED will maintain at least 70% of its initial lumens. The LED will continue to operate past this point at decreased light levels.

² May not be compatible with all Dimming systems, Dimming performance may vary by system. Please check www.halcolighting.com for up-to-date dimmer compatibility information. Use on incompatible systems may shorten lamp life.

³ To view our DLC qualified products, please consult the DLC Qualified Products List at www.designlights.org/qpl

ProLED HID Post Top Retrofit Series



Product #	Product Code	Wattage	Base	Voltage	Color Temp.	CRI	Lumens	Useful Life ¹	Dimmable ²	Pkg. Qty.	MOL	Equivalent Wattage	DLC Qualified ³
84302	HID14/840/LED3	14	E26	120-277V	4000K	84	1932	50,000	No	1/24	6.06"	70W MH/HPS	No
84303	HID14/850/LED3	14	E26	120-277V	5000K	84	1960	50,000	No	1/24	6.06"	70W MH/HPS	No
84304	HID22/840/LED3	22	E26	120-277V	4000K	84	2948	50,000	No	1/24	7.64"	100W MH/HPS	No
84305	HID22/850/LED3	22	E26	120-277V	5000K	84	3011	50,000	No	1/24	7.64"	100W MH/HPS	No
84306	HID36/840/LED3	36	E26	120-277V	4000K	84	4968	50,000	No	1/24	9.17"	150W MH/HPS	No
84307	HID36/850/LED3	36	E26	120-277V	5000K	84	5067	50,000	No	1/24	9.17"	150W MH/HPS	No
84308	HID36/840/EX39/LED3	36	EX39	120-277V	4000K	84	4968	50,000	No	1/12	9.50"	150W MH/HPS	Standard
84309	HID36/850/EX39/LED3	36	EX39	120-277V	5000K	84	5097	50,000	No	1/12	9.50"	150W MH/HPS	Standard
84310	HID45/840/LED3	45	E26	120-277V	4000K	84	6255	50,000	No	1/12	10.35"	175W MH/HPS	No
84311	HID45/850/LED3	45	E26	120-277V	5000K	84	6369	50,000	No	1/12	10.35"	175W MH/HPS	No
84312	HID45/840/EX39/LED3	45	EX39	120-277V	4000K	84	6255	50,000	No	1/12	10.67"	175W MH/HPS	Standard
84313	HID45/850/EX39/LED3	45	EX39	120-277V	5000K	84	6369	50,000	No	1/12	10.67"	175W MH/HPS	Standard
84314	HID54/840/LED3	54	E26	120-277V	4000K	84	7236	50,000	No	1/12	10.35"	250W MH/HPS	No
84315	HID54/850/LED3	54	E26	120-277V	5000K	84	7490	50,000	No	1/12	10.35"	250W MH/HPS	No
84316	HID54/840/EX39/LED3	54	EX39	120-277V	4000K	84	7236	50,000	No	1/12	10.67"	250W MH/HPS	Standard
84317	HID54/850/EX39/LED3	54	EX39	120-277V	5000K	84	7490	50,000	No	1/12	10.67"	250W MH/HPS	Standard

ProLED HID Omni Retrofit Series



Product #	Product Code	Wattage	Base	Voltage	Color Temp.	CRI	Lumens	Useful Life ¹	Dimmable ²	Pkg. Qty.	MOL	Equivalent Wattage	DLC Qualified ³
84318	HID20/OMNI/830/LED	20	E26	120-277V	3000K	84	2780	50,000	No	1/24	5.26"	80W MH/HPS	No
84319	HID20/OMNI/850/LED	20	E26	120-277V	5000K	84	2865	50,000	No	1/24	5.26"	80W MH/HPS	No
84320	HID25/OMNI/830/LED	25	E26	120-277V	3000K	84	3500	50,000	No	1/24	6.28"	100W MH/HPS	No
84321	HID25/OMNI/850/LED	25	E26	120-277V	5000K	84	3612	50,000	No	1/24	6.28"	100W MH/HPS	No
84322	HID25/OMNI/830/EX39/LED	25	EX39	120-277V	3000K	84	3500	50,000	No	1/24	6.28"	100W MH/HPS	Standard
84323	HID25/OMNI/850/EX39/LED	25	EX39	120-277V	5000K	84	3612	50,000	No	1/24	6.28"	100W MH/HPS	Standard
84324	HID35/OMNI/830/EX39/LED	35	EX39	120-277V	3000K	84	4620	50,000	No	1/12	7.25"	150W MH/HPS	Standard
84325	HID35/OMNI/850/EX39/LED	35	EX39	120-277V	5000K	84	4760	50,000	No	1/12	7.25"	150W MH/HPS	Standard

¹ Useful Life is defined as the point in time at which the LED will maintain at least 70% of its initial lumens. The LED will continue to operate past this point at decreased light levels.

² May not be compatible with all Dimming systems, Dimming performance may vary by system. Please check www.halcolighting.com for up-to-date dimmer compatibility information. Use on incompatible systems may shorten lamp life.

³ To view our DLC qualified products, please consult the DLC Qualified Products List at www.designlights.org/qpl

ProLED Linear Direct Fit T8 Series



Product #	Product Code	Lamp Wattage	System Wattage ¹	Base	Voltage	Color Temp.	CRI	Lumens	Useful Life ²	Dimmable ³	Pkg. Qty.	Beam Spread	MOL	THD	Equivalent Wattage	DLC Qualified ⁴
84068	T824FR8/835/DIR2/LED	8	10	G13	120-277V	3500K	82	1250	50,000	No	25	270°	24"	<20%	17	Standard
84069	T824FR8/840/DIR2/LED	8	10	G13	120-277V	4000K	82	1250	50,000	No	25	270°	24"	<20%	17	Standard
84070	T824FR8/850/DIR2/LED	8	10	G13	120-277V	5000K	82	1250	50,000	No	25	270°	24"	<20%	17	Standard
83171	T836FR10/835/DIR/LED	10	13	G13	120-277V	3500K	82	1400	50,000	No	25	270°	36"	<20%	25	Standard
83172	T836FR10/840/DIR/LED	10	13	G13	120-277V	4000K	82	1400	50,000	No	25	270°	36"	<20%	25	Standard
83173	T836FR10/850/DIR/LED	10	13	G13	120-277V	5000K	82	1400	50,000	No	25	270°	36"	<20%	25	Standard
83880	T8FR12/835/DIR4/LED	12	15	G13	120-277V	3500K	82	1800	50,000	Yes	25	270°	48"	<20%	32	Standard
83881	T8FR12/840/DIR4/LED	12	15	G13	120-277V	4000K	82	1850	50,000	Yes	25	270°	48"	<20%	32	Standard
83882	T8FR12/850/DIR4/LED	12	15	G13	120-277V	5000K	82	1850	50,000	Yes	25	270°	48"	<20%	32	Standard

Must be operated with an ambient luminaire temperature between -4°F(-20°C) and 122°F(50°C). Specifications are based on use with normal ballast factor ballasts (0.88). For LBF and HBF ballast performance, see the ProLED® Linear Direct T8 Specifications Sheet.

ProLED U-bend Direct Fit T8 Series



Product #	Product Code	Lamp Wattage	System Wattage ¹	Base	Voltage	Color Temp.	CRI	Lumens	Useful Life ²	Dimmable ³	Pkg. Qty.	Beam Spread	MOL	THD	Equivalent Wattage	DLC Qualified ⁴
6.5" MOD																
84074	T8U6FR11/835/DIR2/LED	11.5	14	G13	120-277V	3500K	82	1700	50,000	Yes	12	270°	22.5"	<20%	32	Standard
84075	T8U6FR11/840/DIR2/LED	11.5	14	G13	120-277V	4000K	82	1800	50,000	Yes	12	270°	22.5"	<20%	32	Standard
843076	T8U6FR11/850/DIR2/LED	11.5	14	G13	120-277V	5000K	82	1800	50,000	Yes	12	270°	22.5"	<20%	32	Standard

Must be operated with an ambient luminaire temperature between 32°F(0°C) and 113°F(45°C). Specifications are based on use with normal ballast factor ballasts (0.88). For LBF and HBF ballast performance, see the ProLED® Linear Direct T5 Specifications Sheet.

ProLED T5 Direct Fit Replacement Series



Product #	Product Code	Lamp Wattage	System Wattage ¹	Base	Voltage	Color Temp.	CRI	Lumens	Useful Life ²	Dimmable ³	Pkg. Qty.	Beam Spread	MOL	THD	Equivalent Wattage	DLC Qualified ⁴
84080	T5FR25/840/DIR2/HO/LED	25	28	G5	120-277V	4000K	82	3500	50,000	No	1/25	270°	45.2"	<20%	54	Standard
84081	T5FR25/850/DIR2/HO/LED	25	28	G5	120-277V	5000K	82	3500	50,000	No	1/25	270°	45.2"	<20%	54	Standard

Must be operated with an ambient luminaire temperature between 32°F(0°C) and 113°F(45°C). Specifications are based on use with normal ballast factor ballasts (0.88). For LBF and HBF ballast performance, see the ProLED® Linear Direct T5 Specifications Sheet.

ProLED T5 Single End Bypass Series



Product #	Product Code	Wattage	Voltage	Color Temp.	CRI	Lumens	Useful Life	Dimmable	Pkg QTY	Beam Spread	MOL	THD	Equivalent Wattage	DLC Qualified
82987	T5FR25/840/BYP/HO/LED	25	120-277V	4000	80	3300	50,000	NO	1/25	270	45.2"	<20	54	Standard
82988	T5FR25/850/BYP/HO/LED	25	120-277V	5000	80	3400	50,000	NO	1/26	271	45.2"	<20	54	Standard

¹ Specifications are based on use with normal ballast factor ballasts (0.88).
² Useful Life is defined as the point in time at which the LED will maintain at least 70% of its initial lumens. The LED will continue to operate past this point at decreased light levels.
³ May not be compatible with all Dimming systems, Dimming performance may vary by system. Please check www.halcolighting.com for up-to-date dimmer compatibility information. Use on incompatible systems may shorten lamp life.
⁴ To view our DLC qualified products, please consult the DLC Qualified Products List at www.designlights.org/qpl

LAMPS

T8 Linear Single & Double End Bypass & Linear T8 Hybrid

ProLED T8 Linear Single End Bypass Series



Product #	Product Code	Lamp Wattage	Base	Voltage	Color Temp.	CRI	Lumens	Useful Life ²	Dimmable ³	Pkg. Qty.	Beam Spread	MOL	THD	Equivalent Wattage	DLC Qualified ⁴
82883	T8FR15/835/BYP3/LED	15	G13	120-277	3500K	82	2000	50,000	No	25	270°	48"	<20%	32	Standard
82884	T8FR15/840/BYP3/LED	15	G13	120-277	4000K	82	2000	50,000	No	25	270°	48"	<20%	32	Standard
82885	T8FR15/850/BYP3/LED	15	G13	120-277	5000K	82	2000	50,000	No	25	270°	48"	<20%	32	Standard

Must be operated with an ambient luminaire temperature between -4°F(-20°C) and 122°F(50°C).

Warning Halco ProLED® Linear Bypass T8 will not operate on a linear fluorescent ballast or with shunted lampholders. Please re-wire the luminaire as shown in the installation instructions included with the product and ensure non-shunted lampholders are installed in the luminaire before installing this product.

ProLED T8 Linear 8' Double Ended Bypass Series



Product #	Product Code	Lamp Wattage	Base	Voltage	Color Temp.	CRI	Lumens	Useful Life ²	Dimmable ³	Pkg. Qty.	Beam Spread	MOL	THD	Equivalent Wattage	DLC Qualified ⁴
82875	T896FR42/840/BYP2/SP/LED	42	Fa8	120-277V	4000K	82	5500	50,000	No	10	270°	96"	<20%	86	Standard
82876	T896FR42/850/BYP2/SP/LED	42	Fa8	120-277V	5000K	82	5500	50,000	No	10	270°	96"	<20%	86	Standard
82877	T896FR42/840/BYP2/RDC/LED	42	R17d	120-277V	4000K	82	5500	50,000	No	10	270°	96"	<20%	86	Standard
82878	T896FR42/850/BYP2/RDC/LED	42	R17d	120-277V	5000K	82	5500	50,000	No	10	270°	96"	<20%	86	Standard
82879	T896FR42/865/BYP2/RDC/LED	42	R17d	120-277V	6500K	82	5500	50,000	No	10	270°	96"	<20%	86	Standard

Must be operated with an ambient luminaire temperature between 32°F(0°C) and 113°F(45°C).

Warning Halco ProLED® Linear Bypass T8 will not operate on a linear fluorescent ballast or with shunted lampholders. Please re-wire the luminaire as shown in the installation instructions included with the product and ensure non-shunted lampholders are installed in the luminaire before installing this product.

ProLED T8 Linear Double Ended Bypass Series



Product #	Product Code	Lamp Wattage	Base	Voltage	Color Temp.	CRI	Lumens	Useful Life ²	Dimmable ³	Pkg. Qty.	Beam Spread	MOL	THD	Equivalent Wattage	DLC Qualified ⁴
83886	T8FR14/835/BYP2/DE/LED	12	G13	120-277V	3500K	82	1700	50,000	No	1/25	270°	48"	<20%	32	Standard
83887	T8FR14/840/BYP2/DE/LED	12	G13	120-277V	4000K	82	1800	50,000	No	1/25	270°	48"	<20%	32	Standard
83888	T8FR14/850/BYP2/DE/LED	12	G13	120-277V	5000K	82	1800	50,000	No	1/25	270°	48"	<20%	32	Standard

Must be operated with an ambient luminaire temperature between 32°F(0°C) and 113°F(45°C).

Warning Halco ProLED® Linear Bypass T8 will not operate on a linear fluorescent ballast or with shunted lampholders. Please re-wire the luminaire as shown in the installation instructions included with the product and ensure non-shunted lampholders are installed in the luminaire before installing this product.

ProLED Linear T8 Hybrid



Product #	Product Code	Type A Lamp Wattage	Type A System Wattage	Type B Wattage	Base Type	Voltage	Color Temp	CRI	Lumens	Useful Life	Dimmable	Beam Spread	MOL	Pkg QTY	THD	Equivalent Wattage	DLC Qualified
85000	T8FR12/835/HYB/LED	12	15.5	13	G13	120-277	3500	80	1800	50,000	NO	270	48"	1/25	<20	32	Standard
85001	T8FR12/840/HYB/LED	12	15.5	13	G13	120-277	4000	80	1900	50,000	NO	270	48"	1/25	<20	32	Standard
85002	T8FR12/850/HYB/LED	12	15.5	13	G13	120-277	5000	80	1900	50,000	NO	270	48"	1/25	<20	32	Standard

¹ Specifications are based on use with normal ballast factor ballasts (0.88).

² Useful Life is defined as the point in time at which the LED will maintain at least 70% of its initial lumens. The LED will continue to operate past this point at decreased light levels.

³ May not be compatible with all Dimming systems, Dimming performance may vary by system. Please check www.halcolighting.com for up-to-date dimmer compatibility information. Use on incompatible systems may shorten lamp life.

⁴ To view our DLC qualified products, please consult the DLC Qualified Products List at www.designlights.org/qpl

ProLED ECO A19 Series



Product #	Product Code	Wattage	Base	Voltage	Color Temp.	CRI	Lumens	Useful Life ¹	Dimmable ²	Pkg. Qty.	MOL	Equivalent Wattage	Energy Star
83971	A19FR6/827/ECO/LED3	6	E26	120V	2700K	82	480	15,000	No	1/6	4.33"	40	Yes
83972	A19FR6/830/ECO/LED3	6	E26	120V	3000K	82	480	15,000	No	1/6	4.33"	40	Yes
83973	A19FR9/827/ECO/LED3	9.5	E26	120V	2700K	82	800	15,000	No	1/6	4.33"	60	Yes
83974	A19FR9/830/ECO/LED3	9.5	E26	120V	3000K	82	800	15,000	No	1/6	4.33"	60	Yes
83975	A19FR9/850/ECO/LED3	9.5	E26	120V	5000K	82	800	15,000	No	1/6	4.33"	60	Yes
83978	A19FR15/850/ECO/LED3	15	E26	120V	5000K	82	1500	15,000	No	1/48	4.68	100	No

15,000 hour useful life rating is based on a maximum ambient temperature of 45°C. Exceeding this ambient temperature rating may result in reduced life.

ProLED A19 Contractor Series 6 Pack



Product #	Product Code	Wattage	Base	Voltage	Color Temp.	CRI	Lumens	Useful Life ¹	Dimmable ²	Pkg. Qty.	MOL	Equivalent Wattage	Energy Star
83976	A19FR9/827/ECO/LED3/6	9	E26	120V	2700K	82	800	15,000	No	6/24	4.33"	60	Yes
83977	A19FR9/830/ECO/LED3/6	9	E26	120V	3000K	82	800	15,000	No	6/24	4.33"	60	Yes

15,000 hour useful life rating is based on a maximum ambient temperature of 45°C. Exceeding this ambient temperature rating may result in reduced life.

ProLED A19 GU24 Series Omnidirectional



Product #	Product Code	Wattage	Base	Voltage	Color Temp.	CRI	Lumens	Useful Life ¹	Dimmable ²	Pkg. Qty.	MOL	Equivalent Wattage	Energy Star
83180	A19FR9/827/OMNI2/GU24/LED	9.5	GU24	120V	2700K	82	800	15,000	No	1/6	4.29"	60W CFL	Yes
83181	A19FR9/830/OMNI2/GU24/LED	9.5	GU24	120V	3000K	82	800	15,000	No	1/6	4.29"	60W CFL	Yes
83182	A19FR9/840/OMNI2/GU24/LED	9.5	GU24	120V	4000K	82	800	15,000	No	1/6	4.29"	60W CFL	Yes
83183	A19FR9/850/OMNI2/GU24/LED	9.5	GU24	120V	5000K	82	800	15,000	No	1/6	4.29"	60W CFL	Yes
83184	A19FR11/827/OMNI2/GU24/LED	11.5	GU24	120V	2700K	82	1100	15,000	No	1/6	4.29"	75W CFL	Yes
83189	A19FR14/840/OMNI2/GU24/LED	15.5	GU24	120V	4000K	82	1600	15,000	No	1/6	4.29"	100W CFL	Yes

15,000 hour useful life rating is based on a maximum ambient temperature of 45°C. Exceeding this ambient temperature rating may result in reduced life.

ProLED Omnidirectional A-Shape Series



Product #	Product Code	Wattage	Base	Voltage	Color Temp.	CRI	Lumens	Useful Life ¹	Dimmable ²	Pkg. Qty.	MOL	Equivalent Wattage	Energy Star
80196	A15FR5/827/OMNI2/LED	5.5	E26	120V	2700K	82	450	25,000	Yes	1/6	3.48"	40	Yes
80197	A15FR5/830/OMNI2/LED	5.5	E26	120V	3000K	82	450	25,000	Yes	1/6	3.48"	40	Yes
80198	A15FR5/840/OMNI2/LED	5.5	E26	120V	4000K	82	450	25,000	Yes	1/6	3.48"	40	Yes
80199	A15FR5/850/OMNI2/LED	5.5	E26	120V	5000K	82	450	25,000	Yes	1/6	3.48"	40	Yes
84965	A19FR6/827/OMNI3/LED	6	E26	120V	2700K	82	480	15,000	Yes	1/6	4.33"	40	Yes
84966	A19FR6/830/OMNI3/LED	6	E26	120V	3000K	82	480	15,000	Yes	1/6	4.33"	40	Yes
84967	A19FR9/827/OMNI3/LED	9.8	E26	120V	2700K	82	800	15,000	Yes	1/6	4.33"	60	Yes
84968	A19FR9/830/OMNI3/LED	9.8	E26	120V	3000K	82	800	15,000	Yes	1/6	4.33"	60	Yes
84969	A19FR9/840/OMNI3/LED	9.8	E26	120V	4000K	82	800	15,000	Yes	1/6	4.33"	60	Yes
84970	A19FR9/850/OMNI3/LED	9.8	E26	120V	5000K	82	800	15,000	Yes	1/6	4.33"	60	Yes
84971	A19FR11/827/OMNI3/LED	11	E26	120V	2700K	82	1100	15,000	Yes	1/6	4.33"	75	Yes
84972	A19FR11/830/OMNI3/LED	11	E26	120V	3000K	82	1100	15,000	Yes	1/6	4.33"	75	Yes
84973	A19FR15/827/OMNI3/LED	15	E26	120V	2700K	82	1600	15,000	Yes	1/6	4.33"	100	Yes
84974	A19FR15/830/OMNI3/LED	15	E26	120V	3000K	82	1600	15,000	Yes	1/6	4.33"	100	Yes
84975	A19FR15/840/OMNI3/LED	15	E26	120V	4000K	82	1600	15,000	Yes	1/6	4.33"	100	Yes
84976	A19FR15/850/OMNI3/LED	15	E26	120V	5000K	82	1600	15,000	Yes	1/6	4.33"	100	Yes
83191	A19FR3/9/12/830/3-WAY/LED	3, 9, 12	E26	120V	3000K	82	280, 950, 1000	15,000	No	1/6	4.64"	30, 70, 100	Yes

15,000 hour useful life rating is based on a maximum ambient temperature of 45°C. Exceeding this ambient temperature rating may result in reduced life. Not rated for enclosed luminaires.

¹ Useful Life is defined as the point in time at which the LED will maintain at least 70% of its initial lumens. The LED will continue to operate past this point at decreased light levels.

² May not be compatible with all Dimming systems, Dimming performance may vary by system. Please check www.halcolighting.com for up-to-date dimmer compatibility information. Use on incompatible systems may shorten lamp life.

LAMPS

A Shape, Performance Reflector Lamps & Performance PAR Lamps

ProLED Performance A-Shape Lamp



Product #	Product Code	Wattage	Base	Voltage	Color Temp.	CRI	Lumens	Useful Life ¹	Dimmable ²	Pkg. Qty.	MOL	Equivalent Wattage	Energy Star
84977	A19FR6/927/T20/LED	6	E26	120V	2700K	90	450	15,000	Yes	1/60	4.33"	40	Yes
84978	A19FR6/930/T20/LED	6	E26	120V	3000K	90	450	15,000	Yes	1/60	4.33"	40	Yes
84980	A19FR9/927/T20/LED	9	E26	120V	2700K	90	800	15,000	Yes	1/60	4.33"	60	Yes
84981	A19FR9/930/T20/LED	9	E26	120V	3000K	91	800	15,000	Yes	1/60	4.33"	60	Yes
84982	A19FR9/950/T20/LED	9	E26	120V	5000K	92	800	15,000	Yes	1/60	4.33"	60	Yes
84983	A19FR12/927/T20/LED	12	E26	120V	2700K	90	1100	15,000	Yes	1/60	4.33"	75	Yes
84984	A19FR12/937/T20/LED	12	E26	120V	3000K	90	1100	15,000	Yes	1/60	4.33"	75	Yes

15,000 hour useful life rating is based on a maximum ambient temperature of 45°C. Exceeding this ambient temperature rating may result in reduced life. Not rated for enclosed luminaires.

¹ Useful Life is defined as the point in time at which the LED will maintain at least 70% of its initial lumens. The LED will continue to operate past this point at decreased light levels.

² May not be compatible with all Dimming systems, Dimming performance may vary by system. Please check www.halcolighting.com for up-to-date dimmer compatibility information. Use on incompatible systems may shorten lamp life.

ProLED Performance Reflector Lamps



Product #	Product Code	Wattage	Base	Voltage	Color Temp.	CRI	Lumens	Useful Life ¹	Dimmable ²	Pkg. Qty.	MOL	Equivalent Wattage	Energy Star
84985	BR30FL8/927/T20/LED	8	E26	120V	2700K	90	720	25,000	Yes	1/48	3.11"	65	Yes
84986	BR30FL8/930/T20/LED	8	E26	120V	3000K	90	720	25,000	Yes	1/48	3.11"	65	Yes

ProLED Performance PAR Lamps



Product #	Product Code	Wattage	Base	Voltage	Color Temp.	CRI	Lumens	Useful Life ¹	Dimmable ²	Pkg. Qty.	MOL	Equivalent Wattage	Energy Star
84987	PAR30FL12S/927/T20/LED	12	E26	120V	2700K	94	975	25,000	Yes	1/48	3.74"	75	Yes
84988	PAR30FL12S/930/T20/LED	12	E26	120V	3000K	94	975	25,000	Yes	1/48	3.74"	75	Yes
84989	PAR30FL12S/940/T20/LED	12	E26	120V	4000K	94	975	25,000	Yes	1/48	3.74"	75	Yes
84990	PAR30FL12S/950/T20/LED	12	E26	120V	5000K	94	975	25,000	Yes	1/48	3.74"	75	Yes
84991	PAR30FL12L/927/T20/LED	12	E26	120V	2700K	94	975	25,000	Yes	1/48	4.41"	75	Yes
84992	PAR30FL12L/930/T20/LED	12	E26	120V	3000K	94	975	25,000	Yes	1/48	4.41"	75	Yes
84993	PAR30FL12L/940/T20/LED	12	E26	120V	4000K	94	975	25,000	Yes	1/48	4.41"	75	Yes
84994	PAR30FL12L/950/T20/LED	12	E26	120V	5000K	94	975	25,000	Yes	1/48	4.41"	75	Yes
84995	PAR38FL15/927/T20/LED	15	E26	120V	2700K	94	1250	25,000	Yes	1/30	4.88"	90	Yes
84996	PAR38FL15/930/T20/LED	15	E26	120V	3000K	94	1250	25,000	Yes	1/30	4.88"	90	Yes
84997	PAR38FL15/940/T20/LED	15	E26	120V	4000K	94	1250	25,000	Yes	1/30	4.88"	90	Yes
84998	PAR38FL15/950/T20/LED	15	E26	120V	5000K	94	1250	25,000	Yes	1/30	4.88"	90	Yes

ProLED BR40



Product #	Product Code	Wattage	Base	Voltage	Color Temp.	CRI	Lumens	Useful Life ¹	Dimmable ²	Pkg. Qty.	MOL	Equivalent Wattage	Energy Star
80981	BR40FL11/827/LED	11.5	E26	120V	2700K	82	940	25,000	Yes	1/6	6.46"	75	Yes
80980	BR40FL11/830/LED	11.5	E26	120V	3000K	82	940	25,000	Yes	1/6	6.46"	75	Yes
80983	BR40FL16/827/LED	16.5	E26	120V	2700K	82	1200	25,000	Yes	1/6	6.46"	85	Yes
80982	BR40FL16/830/LED	16.5	E26	120V	3000K	82	1200	25,000	Yes	1/6	6.46"	85	Yes
80984	BR40FL16/840/LED	16.5	E26	120V	4000K	82	1200	25,000	Yes	1/6	6.46"	85	Yes
80985	BR40FL16/850/LED	16.5	E26	120V	5000K	82	1200	25,000	Yes	1/6	6.46"	85	Yes

ProLED BR30



Product #	Product Code	Wattage	Base	Voltage	Color Temp.	CRI	Lumens	Useful Life ¹	Dimmable ²	Pkg. Qty.	MOL	Equivalent Wattage	Energy Star
80990	BR30FL8/827ECO/LED	8	E26	120V	2700K	82	650	25,000	Yes	1/6	5.12"	65	Yes
80991	BR30FL8/830/ECOLED	8	E26	120V	3000K	82	650	25,000	Yes	1/6	5.12"	65	Yes
80988	BR30FL8/PNK/LED	8	E26	120V	Pink	82	-	40,000	Yes	1/6	5.12"	65	No
80976	BR30FL10/827/LED	9.5	E26	120V	2700K	82	750	25,000	Yes	1/6	5.12"	65	Yes
80977	BR30FL10/830/LED	9.5	E26	120V	3000K	82	750	25,000	Yes	1/6	5.12"	65	Yes
80978	BR30FL10/840/LED	9.5	E26	120V	4000K	82	750	25,000	Yes	1/6	5.12"	65	Yes
80979	BR30FL10/850/LED	9.5	E26	120V	5000K	82	750	25,000	Yes	1/6	5.12"	65	Yes

Not for use in enclosed luminaires.

ProLED BR30 Contractor Series 6 Pack



Product #	Product Code	Wattage	Base	Voltage	Color Temp.	CRI	Lumens	Useful Life ¹	Dimmable ²	Pkg. Qty.	MOL	Equivalent Wattage	Energy Star
82172	BR30FL8/827/ECO/LED/6	8	E26	120V	2700K	82	650	15,000	Yes	6/24	5.20"	65	Yes
82170	BR30FL8/830/ECO/LED/6	8	E26	120V	3000K	82	650	15,000	Yes	6/24	5.20"	65	Yes

15,000 hour useful life rating is based on a maximum ambient temperature of 45°C. Exceeding this ambient temperature rating may result in reduced life.

ProLED R20



Product #	Product Code	Wattage	Base	Voltage	Color Temp.	CRI	Lumens	Useful Life ¹	Dimmable ²	Pkg. Qty.	MOL	Equivalent Wattage	Energy Star
80989	R20FL6/827/LED	6.5	E26	120V	2700K	82	525	25,000	Yes	1/6	3.94"	50	Yes
80986	R20FL6/830/LED	6.5	E26	120V	3000K	82	525	25,000	Yes	1/6	3.94"	50	Yes
81164	R20FL6/840/LED	6.5	E26	120V	4000K	82	525	25,000	Yes	1/6	3.94"	50	Yes
80987	R20FL6/850/LED	6.5	E26	120V	5000K	82	525	25,000	Yes	1/6	3.94"	50	Yes

¹ Useful Life is defined as the point in time at which the LED will maintain at least 70% of its initial lumens. The LED will continue to operate past this point at decreased light levels.

² May not be compatible with all Dimming systems, Dimming performance may vary by system. Please check www.halcolighting.com for up-to-date dimmer compatibility information. Use on incompatible systems may shorten lamp life.

ProLED ECO PAR Series



Product #	Product Code	Description	Wattage	Base	Voltage	Color Temp.	CRI	Lumens	CBCP	Useful Life ¹	Dimmable ²	Pkg. Qty.	Beam Spread	MOL	Equivalent Wattage	Energy Star
PAR20																
82963	PAR20FL7/827/ECO2/LED	Flood	7	E26	120V	2700K	82	500	600	25,000	Yes	1/20	40°	3.39"	50	Yes
82964	PAR20FL7/830/ECO2/LED	Flood	7	E26	120V	3000K	82	530	600	25,000	Yes	1/20	40°	3.39"	50	Yes
82965	PAR20FL7/840/ECO2/LED	Flood	7	E26	120V	4000K	82	550	600	25,000	Yes	1/20	40°	3.39"	50	Yes
82966	PAR20FL7/850/ECO2/LED	Flood	7	E26	120V	5000K	82	570	600	25,000	Yes	1/20	40°	3.39"	50	Yes
PAR30L																
82958	PAR30FL10L/827/ECO2/LED	Flood	10	E26	120V	2700K	82	760	1120	25,000	Yes	1/15	40°	4.61"	60	Yes
82959	PAR30FL10L/830/ECO2/LED	Flood	10	E26	120V	3000K	82	800	1120	25,000	Yes	1/15	40°	4.61"	60	Yes
82960	PAR30FL10L/840/ECO2/LED	Flood	10	E26	120V	4000K	82	840	1120	25,000	Yes	1/15	40°	4.61"	60	Yes
82967	PAR30FL10L/850/ECO2/LED	Flood	10	E26	120V	5000K	82	880	1120	25,000	Yes	1/15	40°	4.61"	60	Yes
82968	PAR30NFL10L/830/ECO2/LED	Narrow Flood	10	E26	120V	3000K	82	800	1120	25,000	Yes	1/15	25°	4.61"	60	Yes
PAR30S																
81961	PAR30FL10S/827/ECO2/LED	Flood	10	E26	120V	2700K	82	760	960	25,000	Yes	1/15	40°	3.35"	75	Yes
81962	PAR30FL10S/830/ECO2/LED	Flood	10	E26	120V	3000K	82	800	960	25,000	Yes	1/15	40°	3.35"	75	Yes
81969	PAR30FL10S/840/ECO2/LED	Flood	10	E26	120V	4000K	82	840	960	25,000	Yes	1/15	40°	3.35"	75	Yes
82970	PAR30FL10S/850/ECO2/LED	Flood	10	E26	120V	5000K	82	880	960	25,000	Yes	1/15	40°	3.35"	75	Yes
82971	PAR30NFL10S/830/ECO2/LED	Narrow Flood	10	E26	120V	3000K	82	800	960	25,000	Yes	1/15	25°	3.35"	75	Yes
PAR38																
81953	PAR38FL15/827/ECO2/LED	Flood	15	E26	120V	2700K	82	1150	1800	25,000	Yes	1/15	40°	5.08"	90	Yes
81954	PAR38FL15/830/ECO2/LED	Flood	15	E26	120V	3000K	82	1200	1800	25,000	Yes	1/15	40°	5.08"	90	Yes
81955	PAR38FL15/840/ECO2/LED	Flood	15	E26	120V	4000K	82	1250	1800	25,000	Yes	1/15	40°	5.08"	90	Yes
81956	PAR38FL15/850/ECO2/LED	Flood	15	E26	120V	5000K	82	1200	1800	25,000	Yes	1/15	40°	5.08"	90	Yes
81957	PAR38NFL15/830/ECO2/LED	Narrow Flood	15	E26	120V	3000K	82	1200	3600	25,000	Yes	1/15	25°	5.08"	90	Yes
82972	PAR38NFL15/850/ECO2/LED	Narrow Flood	15	E26	120V	3000K	82	1200	3600	25,000	Yes	1/15	25°	5.08"	90	Yes

ProLED PAR36/AR111 Indoor



Product #	Product Code	Description	Wattage	Base	Voltage	Color Temp.	CRI	Lumens	CBCP	Useful Life ¹	Dimmable ²	Pkg. Qty.	Beam Spread	MOL	Equivalent Wattage	Energy Star
81097	PAR36FL11/827/LED	Flood	11.5	MP Term	12V	2700K	82	870	2000	40,000	Yes	1/6	32°	1.97"	50	No
80863	PAR36FL17/827/LED	Flood	17	MP Term	12V	2700K	82	1000	2300	40,000	Yes	1/6	32°	1.97"	75	No

Not for use in enclosed luminaires. May not be compatible with all electronic transformers. Rated for indoor use only.

¹ Useful Life is defined as the point in time at which the LED will maintain at least 70% of its initial lumens. The LED will continue to operate past this point at decreased light levels.

² May not be compatible with all Dimming systems, Dimming performance may vary by system. Please check www.halcolighting.com for up-to-date dimmer compatibility information. Use on incompatible systems may shorten lamp life.

ProLED PL Bypass Series



Product #	Product Code	Wattage	Base	Voltage	Color Temp.	CRI	Lumens	Useful Life ¹	Dimmable ²	Pkg. Qty.	MOL	Equivalent Wattage	DLC Qualified ³
Vertical													
81141	PL10V/835/BYP/LED	10	G24q/GX24q/G24d/GX24d	120-277V	3500K	82	1000	50,000	No	1/10	4.60"	26	No
81142	PL10V/841/BYP/LED	10	G24q/GX24q/G24d/GX24d	120-277V	4100K	82	1000	50,000	No	1/10	4.60"	26	No
81143	PL10V/850/BYP/LED	10	G24q/GX24q/G24d/GX24d	120-277V	5000K	82	1000	50,000	No	1/10	4.60"	26	No
Horizontal													
81144	PL10H/835/BYP/LED	10	G24q/GX24q/G24d/GX24d	120-277V	3500K	82	1000	50,000	No	1/10	5.20"	26	No
81145	PL10H/841/BYP/LED	10	G24q/GX24q/G24d/GX24d	120-277V	4100K	82	1000	50,000	No	1/10	5.20"	26	No
81146	PL10H/850/BYP/LED	10	G24q/GX24q/G24d/GX24d	120-277V	5000K	82	1000	50,000	No	1/10	5.20"	26	No

Must be operated with an ambient luminaire temperature between -4°F(-20°C) and 122°F(50°C). Specifications are based on use with normal ballast factor ballasts (0.88).

ProLED PL Direct Series



Product #	Product Code	Wattage	Base	Voltage	Color Temp.	CRI	Lumens	Useful Life ¹	Dimmable ²	Pkg. Qty.	MOL	Equivalent Wattage	DLC Qualified ³
Vertical													
82112	PL12V/835/DIR/LED2	12	G24q/GX24q	120-277V	3500K	82	1200	50,000	No	1/10	4.60"	26	Standard
82113	PL12V/840/DIR/LED2	12	G24q/GX24q	120-277V	4000K	82	1200	50,000	No	1/10	4.60"	26	Standard
82114	PL12V/850/DIR/LED2	12	G24q/GX24q	120-277V	5000K	82	1200	50,000	No	1/10	4.60"	26	Standard
Horizontal													
82117	PL12H/835/DIR/LED2	12	G24q/GX24q	120-277V	3500K	82	1200	50,000	No	1/10	5.20"	26	Standard
82118	PL12H/840/DIR/LED2	12	G24q/GX24q	120-277V	4000K	82	1200	50,000	No	1/10	5.20"	26	Standard
82119	PL12H/850/DIR/LED2	12	G24q/GX24q	120-277V	5000K	82	1200	50,000	No	1/10	5.20"	26	Standard

ProLED PL Hybrid Series



Product #	Product Code	Wattage	Base	Voltage	Color Temp.	CRI	Lumens	Useful Life ¹	Dimmable ²	Pkg. Qty.	MOL	Equivalent Wattage	DLC Qualified ³
81159	PL6H/827/HYB/LED	6	GX23	120-277V	2700K	82	520	50,000	No	1/10	5.50"	13	No
81160	PL6H/830/HYB/LED	6	GX23	120-277V	3000K	82	520	50,000	No	1/10	5.50"	13	No
81161	PL6H/835/HYB/LED	6	GX23	120-277V	3500K	82	520	50,000	No	1/10	5.50"	13	No
81162	PL6H/840/HYB/LED	6	GX23	120-277V	4000K	82	520	50,000	No	1/10	5.50"	13	No
81163	PL6H/850/HYB/LED	6	GX23	120-277V	5000K	82	520	50,000	No	1/10	5.50"	13	No

¹ Useful Life is defined as the point in time at which the LED will maintain at least 70% of its initial lumens. The LED will continue to operate past this point at decreased light levels.

² May not be compatible with all Dimming systems, Dimming performance may vary by system. Please check www.halcolighting.com for up-to-date dimmer compatibility information. Use on incompatible systems may shorten lamp life.

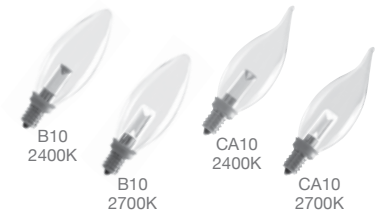
³ To view our DLC qualified products, please consult the DLC Qualified Products List at www.designlights.org/qpl

ProLED B11 Chandelier



Product #	Product Code	Description	Wattage	Base	Voltage	Color Temp.	CRI	Lumens	Useful Life ¹	Dimmable ²	Pkg. Qty.	MOL	Equivalent Wattage	Energy Star
80094	B11CL3/827/LED	Cream Finish	3	E12	120V	2700K	82	180	25,000	Yes	1/10	3.78"	25	No
80789	B11CL3/827/BR/LED	Brass Finish	3	E12	120V	2700K	82	180	25,000	Yes	1/10	3.78"	25	No
80790	B11CL3/827/CHR/LED	Chrome Finish	3	E12	120V	2700K	82	180	25,000	Yes	1/10	3.78"	25	No
80185	B11CL3/830/LED	Cream Finish	3	E12	120V	3000K	82	180	25,000	Yes	1/10	3.78"	25	No
80820	B11CL5/827/LED	Cream Finish	4.5	E12	120V	2700K	82	300	25,000	Yes	1/10	3.78"	40	Yes
80168	B11CL5/827/E26/LED	Cream Finish	4.5	E26	120V	2700K	82	300	25,000	Yes	1/10	3.78"	40	Yes
80183	B11CL5/830/E26/LED	Cream Finish	4.5	E26	120V	3000K	82	300	25,000	Yes	1/10	3.78"	40	Yes
80184	B11CL5/830/LED	Cream Finish	4.5	E12	120V	3000K	82	300	25,000	Yes	1/10	3.78"	40	Yes

ProLED Decorative Chandelier



Product #	Product Code	Description	Wattage	Base	Voltage	Color Temp.	CRI	Lumens	Useful Life ¹	Dimmable ²	Pkg. Qty.	MOL	Equivalent Wattage	Energy Star
B10														
80173	B10CL1/724/LED	Clear Torpedo	1	E12	120V	2400K	72	20	25,000	Yes	1/25	3.77"	7.5	No
80172	B10CL1/827/LED	Clear Torpedo	1	E12	120V	2700K	82	25	25,000	Yes	1/25	3.77"	7.5	No
CA10														
80175	CA10CL1/724/LED	Clear Flame Tip	1	E12	120V	2400K	72	20	25,000	Yes	1/25	4.01"	7.5	No
80174	CA10CL1/827/LED	Clear Flame Tip	1	E12	120V	2700K	82	25	25,000	Yes	1/25	4.01"	7.5	No

Not for use in enclosed luminaires.

ProLED G25 Series Globe



Product #	Product Code	Description	Wattage	Base	Voltage	Color Temp.	CRI	Lumens	Useful Life ¹	Dimmable ²	Pkg. Qty.	MOL	Equivalent Wattage	Energy Star
80180	G25FR6/830/LED	Globe	6	E26	120V	3000K	82	470	25,000	Yes	1/6	4.25"	40	Yes

Use on incompatible systems may shorten lamp life.

¹ Useful Life is defined as the point in time at which the LED will maintain at least 70% of its initial lumens. The LED will continue to operate past this point at decreased light levels.

² May not be compatible with all Dimming systems, Dimming performance may vary by system. Please check www.halcolighting.com for up-to-date dimmer compatibility information. Use on incompatible systems may shorten lamp life.

ProLED Filament Series



Product #	Product Code	Description	Wattage	Base	Voltage	Color Temp.	CRI	Lumens	Useful Life ¹	Dimmable ²	Pkg. Qty.	MOL	Equivalent Wattage	Energy Star
B11														
85050	B11CL2ANT/827/E26/LED2	Clear Filament	2.5	E26	120V	2700K	82	180	15,000	Yes	1/10	3.72"	25	Yes
85051	B11CL2/ANT/827/LED2	Clear Filament	2.5	E12	120V	2700K	82	180	15,000	Yes	1/10	3.78"	25	Yes
85052	B11FR2/ANT/827/LED2	Frosted Filament	2.5	E12	120V	2700K	82	160	15,000	Yes	1/10	3.72"	25	Yes
85053	B11CL4/ANT/830/LED2	Clear Filament	4.5	E12	120V	3000K	82	350	15,000	Yes	1/10	3.78"	40	Yes
85054	B11CL4/ANT/827/LED2	Clear Filament	3.8	E12	120V	2700K	82	300	15,000	Yes	1/10	3.72"	40	Yes
85055	B11CL4ANT/827/E26/LED2	Clear Filament	3.8	E26	120V	2700K	82	300	15,000	Yes	1/10	3.78"	40	Yes
85056	B11AMB4ANT/820/LED2	Amber Filament	3.8	E12	120V	2000K	82	220	15,000	Yes	1/10	3.72"	40	Yes
85081	B11FR4/ANT/827/LED2	Frosted Filament	3.8	E12	120V	2700K	82	300	15,000	Yes	1/10	3.78"	40	Yes
85057	B11CL5ANT/827/E26/LED2	Clear Filament	5.5	E26	120V	2700K	82	500	15,000	Yes	1/10	3.78"	60	Yes
85058	B11CL5ANT/827/LED2	Clear Filament	5.5	E12	120V	2700K	82	500	15,000	Yes	1/10	3.72"	60	Yes
85059	B11AMB5ANT/822/LED2	Amber Filament	5.5	E12	120V	2200K	82	400	15,000	Yes	1/10	3.78"	60	Yes
85060	B11CL5/ANT/830/LED2	Clear Filament	5.5	E12	120V	3000K	82	500	15,000	Yes	1/10	3.72"	60	Yes
CA10														
85061	CA10CL2ANT/827/LED2	Clear Filament	2.5	E12	120V	2700K	82	180	15,000	Yes	1/10	4.09"	25	Yes
85062	CA10FR2ANT/827/LED2	Frosted Filament	2.5	E12	120V	2700K	82	160	15,000	Yes	1/10	3.78"	25	Yes
85063	CA10CL2ANT/827/E26/LED2	Clear Filament	2.5	E26	120V	2700K	82	180	15,000	Yes	1/10	3.72"	25	Yes
85064	CA10CL4ANT/827/E26/LED2	Clear Filament	3.8	E26	120V	2700K	82	300	15,000	Yes	1/10	3.78"	40	Yes
85065	CA10CL4ANT/827/LED2	Clear Filament	3.8	E12	120V	2700K	82	300	15,000	Yes	1/10	3.72"	40	Yes
85066	CA10CL4ANT/830/LED2	Clear Filament	4.5	E12	120V	3000K	82	350	15,000	Yes	1/10	3.78"	40	Yes
85067	CA10CL5ANT/827/LED2	Frosted Filament	5.5	E12	120V	2700K	82	500	15,000	Yes	1/10	3.72"	60	Yes
85068	CA10CL5ANT/830/LED2	Clear Filament	5.5	E12	120V	3000K	82	500	15,000	Yes	1/10	3.78"	60	Yes
85069	CA10CL5ANT/827/E26/LED2	Frosted Filament	5.5	E26	120V	2700K	82	500	15,000	Yes	1/10	3.72"	60	Yes
85077	CA10AMB4ANT/820/LED2	Amber Filament	3.8	E12	120V	2000K	82	220	15,000	Yes	1/10	4.13"	40	Yes
85082	CA10FR4ANT/827/LED2	Frosted Filament	3.8	E12	120V	2700K	82	300	15,000	Yes	1/10	3.78"	40	Yes
A15														
85035	A15CL5ANT/827/LED2	Clear Filament	5	E26	120V	2700K	82	450	15,000	Yes	1/10	4.13"	40	Yes
85036	A15AMB6ANT/820/LED2	Amber Filament	6	E26	120V	2000K	82	340	15,000	Yes	1/10	4.13"	40	Yes
A19														
85037	A19CL5ANT/827/LED2	Clear Filament	5.5	E26	120V	2700K	82	450	15,000	Yes	1/10	4.13"	40	Yes
85038	A19AMB5ANT/820/LED2	Frosted Filament	5.5	E26	120V	2000K	82	450	15,000	Yes	1/10	4.13"	40	Yes
85039	A19CL9ANT/827/LED2	Clear Filament	9	E26	120V	2700K	82	800	15,000	Yes	1/10	4.13"	60	Yes
85040	A19FR9ANT/827/LED2	Frosted Filament	9	E26	120V	2700K	82	800	15,000	Yes	1/10	4.13"	60	Yes
85041	A19AMB9ANT/820/LED2	Amber Filament	9	E26	120V	2000K	82	600	15,000	Yes	1/10	4.13"	60	Yes
85042	A19CL7ANT/830/LED2	Clear Filament	7	E26	120V	3000K	82	800	15,000	Yes	1/10	4.13"	60	Yes
85078	A19AMB6ANT/820/CF/LED2	Amber Filament	6.5	E26	120V	2000K	82	250	15,000	Yes	1/10	4.13"	40	No
S14														
81139**	S14CL2ANT/827/LED	Clear Filament	2	E26	120V	2700K	82	200	15,000	No	25/100	3.46"	25	Yes
81140**	S14AMB2ANT/822/LED	Amber Filament	2	E26	120V	2200K	82	160	15,000	No	25/100	3.46"	25	Yes
82139**	S14CL2ANT/827/LED2	Clear Filament	2	E26	120V	2700K	82	200	15,000	Yes	25/100	3.46"	25	No
82140**	S14AMB2ANT/822/LED2	Amber Filament	2	E26	120V	2200K	82	160	15,000	Yes	25/100	3.46"	25	No
G16.5														
85070	G16.5CL3ANT/827/LED2	Clear Filament	3.5	E12	120V	2700K	82	250	15,000	Yes	1/10	4.13"	40	Yes
85071	G16.5CL4ANT/827/LED2	Clear Filament	4.5	E12	120V	2700K	82	350	15,000	Yes	1/10	4.13"	40	Yes
G25														
85047	G25CL5ANT/827/LED2	Clear Filament	5.5	E26	120V	2700K	82	500	15,000	Yes	1/10	4.60"	60	Yes
85048	G25FR5ANT/827/LED2	Frosted Filament	5.5	E26	120V	2700K	82	500	15,000	Yes	1/10	4.60"	60	Yes
85049	G25CL5ANT/830/LED2	Clear Filament	5.5	E26	120V	3000K	82	500	15,000	Yes	1/10	4.60"	60	Yes
85072	G25CL7ANT/827/LED2	Clear Filament	7	E26	120V	2700K	82	800	15,000	Yes	1/10	4.60"	100	Yes
85079	G25AMB6ANT/820/CF/LED2	Amber Filament	6.5	E26	120V	2000K	82	250	15,000	Yes	1/10	4.60"	40	No
ST19														
85043	ST19CL5ANT/827/LED2	Clear Filament	5.5	E26	120V	2700K	82	500	15,000	Yes	1/10	5.79"	60	Yes
85044	ST19AMB5ANT/822/LED2	Amber Filament	5.5	E26	120V	2200K	82	400	15,000	Yes	1/10	5.79"	40	Yes
85045	ST19CL7ANT/827/LED2	Clear Filament	7	E26	120V	2700K	82	800	15,000	Yes	1/10	5.79"	60	Yes
85046	ST19AMB7ANT/822/LED2	Amber Filament	7	E26	120V	2200K	82	650	15,000	Yes	1/10	5.79"	40	Yes
85080	ST19AMB6ANT/820/CF/LED2	Amber Filament	6.5	E26	120V	2000K	82	250	15,000	Yes	1/10	5.79"	40	No
T6														
85076	T6AMB2ANT/822/LED2	Amber Filament	2.5	E26	120V	2200K	82	160	15,000	Yes	1/10	3.46"	25	No
T10														
85074	T10CL4ANT/827/LED2	Clear Filament	4.5	E26	120V	2700K	82	350	15,000	Yes	1/10	7.44"	40	No
85075	T10AMB4ANT/822/LED2	Amber Filament	4.5	E26	120V	2200K	82	350	15,000	Yes	1/10	3.46"	40	No
T14														
85073	T14CL4ANT/827/LED2	Clear Filament	4.5	E26	120V	2700K	82	450	15,000	Yes	1/10	3.46"	25	Yes

** Wet location listed.

ENERGY STAR® mandates that lamps may only be listed at 25,000 hour life with 3,000 hour actual life test data, 6,000 hour LM80 data and in-situ temperature measurements. Upon completion of full lifetime testing, ProLED ENERGY STAR® listed lamps will be listed at their full lifetime.

¹ Useful Life is defined as the point in time at which the LED will maintain at least 70% of its initial lumens. The LED will continue to operate past this point at decreased light levels.

² May not be compatible with all Dimming systems, Dimming performance may vary by system. Please check www.halcolighting.com for up-to-date dimmer compatibility information. Use on incompatible systems may shorten lamp life.

ProLED Sign Lamp Series



Product #	Product Code	Description	Wattage	Base	Voltage	Color Temp.	CRI	Lumens	Useful Life ¹	Dimmable ²	Pkg. Qty.	MOL	Equivalent Wattage	Energy Star
S11														
80525	S11CL1C/827/INT/LED	Clear, IP65 Rated	1.2	E17	120V	2700K	82	35	40,000	Yes	1/25	2.24"	11	No
80524	S11CL1C/827/LED	Clear, IP65 Rated	1.2	E26	120V	2700K	82	35	40,000	Yes	1/25	2.24"	11	No
80526	S11WH1C/LED	White, IP65 Rated	1.2	E26	120V	White	-	-	40,000	Yes	1/25	2.24"	11	No
S14														
80522	S14CL1C/827/LED	Clear, IP65 Rated	1.4	E26	120V	2700K	82	35	40,000	Yes	1/25	3.35"	11	No
80517	S14RED1C/LED	Red, IP65 Rated	1.4	E26	120V	Red	-	-	40,000	Yes	1/25	3.35"	11	No
80518	S14BLU1C/LED	Blue, IP65 Rated	1.4	E26	120V	Blue	-	-	40,000	Yes	1/25	3.35"	11	No
80519	S14GRN1C/LED	Green, IP65 Rated	1.4	E26	120V	Green	-	-	40,000	Yes	1/25	3.35"	11	No
80520	S14YEL1C/LED	Yellow, IP65 Rated	1.4	E26	120V	Yellow	-	-	40,000	Yes	1/25	3.35"	11	No
80521	S14WH1C/LED	White, IP65 Rated	1.4	E26	120V	White	-	-	40,000	Yes	1/25	3.35"	11	No
80523	S14ORG1C/LED	Orange, IP65 Rated	1.4	E26	120V	Orange	-	-	40,000	Yes	1/25	3.35"	11	No

Not for use in enclosed luminaires.

ProLED Elevator Lamp



Product #	Product Code	Description	Wattage	Base	Voltage	Color Temp.	CRI	Lumens	CBCP	Useful Life ¹	Dimmable ²	Pkg. Qty.	Beam Spread	MOL	Equivalent Wattage	Energy Star
80756	GBF/3WW/LED	Flood	2.6	BA15d	10-18V	2700K	82	410	145	40,000	No	1/10	31°	2.52"	20	No
80701	1383/3WW/LED	Flood	2.6	BA15s	10-18V	2700K	82	410	145	40,000	No	1/10	31°	2.52"	20	No

¹ Useful Life is defined as the point in time at which the LED will maintain at least 70% of its initial lumens. The LED will continue to operate past this point at decreased light levels.

² May not be compatible with all Dimming systems, Dimming performance may vary by system. Please check www.halcolighting.com for up-to-date dimmer compatibility information. Use on incompatible systems may shorten lamp life.

ProLED MR16



Product #	Product Code	Description	Wattage	Base	Voltage	Color Temp.	CRI	Lumens	CBCP	Useful Life ¹	Dimmable ²	Pkg. Qty.	Beam Spread	MOL	Equivalent Wattage	Energy Star
81055	MR16NFL10/827/LED	Narrow Flood	2.5	GU5.3	10-18V	2700K	82	200	800	40,000	Yes	1/10	20°	1.97"	10	No
81079	MR16NFL10/830/LED	Narrow Flood	2.5	GU5.3	10-18V	3000K	82	210	830	40,000	Yes	1/10	20°	1.97"	10	No
81056	MR16FL10/827/LED	Flood	2.5	GU5.3	10-18V	2700K	82	200	300	40,000	Yes	1/10	40°	1.97"	10	No
81077	MR16FL10/830/LED	Flood	2.5	GU5.3	10-18V	3000K	82	210	320	40,000	Yes	1/10	40°	1.97"	10	No
81058	MR16FL10/850/LED	Flood	2.5	GU5.3	10-18V	5000K	82	230	350	40,000	Yes	1/10	40°	1.97"	10	No
81057	MR16WFL10/827/LED	Wide Flood	2.5	GU5.3	10-18V	2700K	82	200	200	40,000	Yes	1/10	60°	1.97"	10	No
81080	MR16WFL10/830/LED	Wide Flood	2.5	GU5.3	10-18V	3000K	82	210	220	40,000	Yes	1/10	60°	1.97"	10	No
81059	MR16BBF/827/LED	Narrow Flood	4	GU5.3	10-18V	2700K	82	270	900	40,000	Yes	1/10	20°	1.97"	20	Yes
81081	MR16BBF/830/LED	Narrow Flood	4	GU5.3	10-18V	3000K	82	280	1100	40,000	Yes	1/10	20°	1.97"	20	Yes
81060	MR16BAB/827/LED	Flood	4	GU5.3	10-18V	2700K	82	270	440	40,000	Yes	1/10	40°	1.97"	20	Yes
81062	MR16BAB/830/LED	Flood	4	GU5.3	10-18V	3000K	82	280	500	40,000	Yes	1/10	40°	1.97"	20	Yes
81063	MR16BAB/850/LED	Flood	4	GU5.3	10-18V	5000K	82	310	530	40,000	Yes	1/10	40°	1.97"	20	Yes
81061	MR16WFL20/827/LED	Wide Flood	4	GU5.3	10-18V	2700K	82	270	210	40,000	Yes	1/10	60°	1.97"	20	No
81082	MR16WFL20/830/LED	Wide Flood	4	GU5.3	10-18V	3000K	82	280	230	40,000	Yes	1/10	60°	1.97"	20	No
81064	MR16FRA/827/LED	Narrow Flood	4.5	GU5.3	10-18V	2700K	82	380	1700	40,000	Yes	1/10	20°	1.97"	35	Yes
81083	MR16FRA/830/LED	Narrow Flood	4.5	GU5.3	10-18V	3000K	82	390	1800	40,000	Yes	1/10	20°	1.97"	35	Yes
81065	MR16FMW/827/LED	Flood	4.5	GU5.3	10-18V	2700K	82	380	600	40,000	Yes	1/10	40°	1.97"	35	Yes
81067	MR16FMW/830/LED	Flood	4.5	GU5.3	10-18V	3000K	82	390	650	40,000	Yes	1/10	40°	1.97"	35	Yes
81068	MR16FMW/850/LED	Flood	4.5	GU5.3	10-18V	5000K	82	430	700	40,000	Yes	1/10	40°	1.97"	35	Yes
81066	MR16WFL35/827/LED	Wide Flood	4.5	GU5.3	10-18V	2700K	82	380	300	40,000	Yes	1/10	60°	1.97"	35	No
81084	MR16WFL35/830/LED	Wide Flood	4.5	GU5.3	10-18V	3000K	82	390	320	40,000	Yes	1/10	60°	1.97"	35	No
81069	MR16EXZ/827/LED	Narrow Flood	8	GU5.3	10-18V	2700K	82	590	2700	40,000	Yes	1/10	20°	1.97"	50	No
81085	MR16EXZ/830/LED	Narrow Flood	8	GU5.3	10-18V	3000K	82	600	2800	40,000	Yes	1/10	20°	1.97"	50	No
81070	MR16EXN/827/LED	Flood	8	GU5.3	10-18V	2700K	82	590	1100	40,000	Yes	1/10	40°	1.97"	50	No
81072	MR16EXN/830/LED	Flood	8	GU5.3	10-18V	3000K	82	600	1200	40,000	Yes	1/10	40°	1.97"	50	No
81073	MR16EXN/850/LED	Flood	8	GU5.3	10-18V	5000K	82	660	1400	40,000	Yes	1/10	40°	1.97"	50	No
81071	MR16FNV/827/LED	Wide Flood	8	GU5.3	10-18V	2700K	82	590	500	40,000	Yes	1/10	60°	1.97"	50	No
81086	MR16FNV/830/LED	Wide Flood	8	GU5.3	10-18V	3000K	82	600	520	40,000	Yes	1/10	60°	1.97"	50	No

Acceptable for use in sealed metal landscape luminaires when protected from the elements.

ProLED MR16 GU10



Product #	Product Code	Description	Wattage	Base	Voltage	Color Temp.	CRI	Lumens	CBCP	Useful Life ¹	Dimmable ²	Pkg. Qty.	Beam Spread	MOL	Equivalent Wattage	Energy Star
80529	MR16FL4/827/GU10/LED	Flood	4.5	GU10	120V	2700K	82	360	525	25,000	Yes	1/10	40°	2.70"	35	No
80887	MR16FL4/830/GU10/LED	Flood	4.5	GU10	120V	3000K	82	370	525	25,000	Yes	1/10	40°	2.17"	35	Yes
80531	MR16FL4/840/GU10/LED	Flood	4.5	GU10	120V	4000K	82	360	525	25,000	Yes	1/10	40°	2.70"	35	No
80533	MR16FL4/850/GU10/LED	Flood	4.5	GU10	120V	5000K	82	360	525	25,000	Yes	1/10	40°	2.70"	35	No
80528	MR16FL6/827/GU10/LED	Flood	6.5	GU10	120V	2700K	82	500	730	25,000	Yes	1/10	40°	2.17"	50	No
80888	MR16FL6/830/GU10/LED	Flood	6.5	GU10	120V	3000K	82	520	730	25,000	Yes	1/10	40°	2.17"	50	Yes
80530	MR16FL6/840/GU10/LED	Flood	6.5	GU10	120V	4000K	82	500	730	25,000	Yes	1/10	40°	2.17"	50	No
80532	MR16FL6/850/GU10/LED	Flood	6.5	GU10	120V	5000K	82	500	730	25,000	Yes	1/10	40°	2.17"	50	Yes

¹ Useful Life is defined as the point in time at which the LED will maintain at least 70% of its initial lumens. The LED will continue to operate past this point at decreased light levels.

² May not be compatible with all Dimming systems, Dimming performance may vary by system. Please check www.halcolighting.com for up-to-date dimmer compatibility information. Use on incompatible systems may shorten lamp life.

LAMPS

MR16 & MR11

ProLED Commercial MR16/MR11



Product #	Product Code	Description	Wattage	Base	Voltage	Color Temp.	CRI	Lumens	CBCP	Useful Life ¹	Dimmable ²	Pkg. Qty.	Beam Spread	MOL	Equivalent Wattage	Energy Star
MR11																
80996	MR11NFL3/827/LED	Narrow Flood	3	GU4	12V	2700K	82	210	700	25,000	No	1/10	20°	1.48"	20	No
80997	MR11NFL3/830/LED	Narrow Flood	3	GU4	12V	3000K	82	210	700	25,000	No	1/10	20°	1.48"	20	No
80998	MR11NFL3/840/LED	Narrow Flood	3	GU4	12V	4000K	82	210	700	25,000	No	1/10	20°	1.48"	20	No
80999	MR11NFL3/850/LED	Narrow Flood	3	GU4	12V	5000K	82	210	700	25,000	No	1/10	20°	1.48"	20	No
MR16																
80534	MR16FL4/827/LED2	Flood	4.5	GU5.3	12V	2700K	82	360	730	25,000	Yes	1/10	40°	1.77"	35	No
80535	MR16FL4/830/LED2	Flood	4.5	GU5.3	12V	3000K	82	370	750	25,000	Yes	1/10	40°	1.77"	35	No
80536	MR16FL4/850/LED2	Flood	4.5	GU5.3	12V	5000K	82	400	810	25,000	Yes	1/10	40°	1.77"	35	No
80537	MR16FL6/827/LED2	Flood	6.5	GU5.3	12V	2700K	82	500	1100	25,000	Yes	1/10	40°	1.77"	50	Yes
80538	MR16FL6/830/LED2	Flood	6.5	GU5.3	12V	3000K	82	500	730	25,000	Yes	1/10	40°	1.77"	50	Yes
80539	MR16FL6/850/LED2	Flood	6.5	GU5.3	12V	5000K	82	500	1190	25,000	Yes	1/10	40°	1.77"	50	Yes
80540	MR16NFL6/830/LED2	Narrow Flood	6.5	GU5.3	12V	3000K	82	520	2420	25,000	Yes	1/10	20°	1.77"	50	Yes

Acceptable for use in sealed metal landscape luminaires when protected from the elements.

OUTDOOR LAMPS

MR16 RGBW Series, MR16 Black & MR11

ProLED MR16 RGBW Series



Product #	Product Code	Description	Wattage	Base	Voltage	Color Temp.	CRI	Lumens	Useful Life ¹	Dimmable ²	Pkg. Qty.	Beam Spread	MOL	Equivalent Wattage	Energy Star
82099	MR16FL6/RGBW/LED	RGB-W, White Finish	6	GU5.3	10-15V	RGB-W Warm White	80	400	25,000	Yes	1/10	40°	1.97"	35	No

ProLED MR16 Black



Product #	Product Code	Description	Wattage	Base	Voltage	Color Temp.	CRI	Lumens	CBCP	Useful Life ¹	Dimmable ²	Pkg. Qty.	Beam Spread	MOL	Equivalent Wattage	Energy Star
81103	MR16NFL4/827/LED	Narrow Flood, Black	4	GU5.3	10-15V	2700K	82	250		30,000	Yes	1/10	20°	1.97"	20	No
81098	MR16FL4/827/LED	Flood, Black	4	GU5.3	10-15V	2700K	82	250		30,000	Yes	1/10	40°	1.97"	20	No
81099	MR16WFL4/827/LED	Wide Flood, Black	4	GU5.3	10-15V	2700K	82	250		30,000	Yes	1/10	60°	1.97"	20	No
82094	MR16NFL4.5/827/LED	Narrow Flood, Black	4.5	GU5.3	10-15V	2700K	82	390		30,000	Yes	1/10	20°	1.97"	35	No
82095	MR16FL4.5/827/LED	Narrow Flood, Black	4.5	GU5.3	10-15V	2700K	82	390		30,000	Yes	1/10	40°	1.97"	35	No
82096	MR16WFL4.5/827/LED	Wide Flood, Black	4.5	GU5.3	10-15V	2700K	82	390		30,000	Yes	1/10	60°	1.97"	35	No

Use on incompatible systems may shorten lamp life.
Acceptable for use in sealed metal landscape luminaires when protected from the elements.

ProLED MR11



Product #	Product Code	Description	Wattage	Base	Voltage	Color Temp.	CRI	Lumens	CBCP	Useful Life ¹	Dimmable ²	Pkg. Qty.	Beam Spread	MOL	Equivalent Wattage	Energy Star
81093	MR11FTD/827/LED	Flood	3	GU4	10-18V	2700K	82	230	420	40,000	Yes	1/10	30°	1.42"	20	No
81094	MR11FTD/827/BA15D/LED	Flood	3	BA15d	10-15V	2700K	82	230	420	40,000	Yes	1/10	30°	1.42"	20	No
81095	MR11FTD/850/LED	Flood	3	GU4	10-18V	2700K	82	250	500	40,000	Yes	1/10	30°	1.42"	20	No
81096	MR11FTC/827/LED	Narrow Flood	4.5	GU4	10-18V	2700K	82	230	600	40,000	Yes	1/10	22°	1.42"	20	No

Use on incompatible systems may shorten lamp life. Acceptable for use in sealed metal landscape luminaires when protected from the elements. May not be compatible with all electronic transformers. Magnetic transformers are recommended for Dimmable applications. Not for use in enclosed luminaires. Lamps should be tested in the application for compatibility prior to full installations on circuits using such devices.

¹ Useful Life is defined as the point in time at which the LED will maintain at least 70% of its initial lumens. The LED will continue to operate past this point at decreased light levels.
² May not be compatible with all Dimming systems, Dimming performance may vary by system. Please check www.halcolighting.com for up-to-date dimmer compatibility information. Use on incompatible systems may shorten lamp life.

ProLED Outdoor PAR36



Product #	Product Code	Description	Wattage	Base	Voltage	Color Temp.	CRI	Lumens	CBCP	Useful Life ¹	Dimmable ²	Pkg. Qty.	Beam Spread	MOL	Equivalent Wattage	Energy Star
81074	PAR36WFL4/827/IP67/LED	Wide Flood	4.5	MP Term	10-15V	2700K	82	300	700	40,000	Yes	1/6	32°	2.40"	20	No
81075	PAR36WFL6/827/IP67/LED	Wide Flood	6.5	MP Term	10-15V	2700K	82	450	1100	40,000	Yes	1/6	32°	2.40"	35	No
81076	PAR36WFL12/827/IP67/LED	Wide Flood	12.5	MP Term	10-15V	2700K	82	800	2000	40,000	Yes	1/6	32°	2.40"	50	No

Not for use in enclosed luminaires. May not be compatible with all electronic transformers. Rated for outdoor use only.

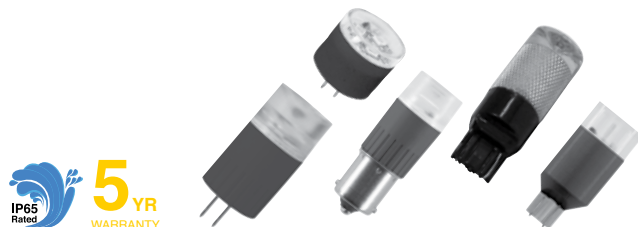
ProLED Outdoor PAR36 RGB-W Series



Product #	Product Code	Description	Wattage	Base	Voltage	Color Temp.	CRI	Lumens	Useful Life ¹	Dimmable ²	Pkg. Qty.	Beam Spread	MOL	Equivalent Wattage	Energy Star
82142	PAR36WFL10/RGBW/IP65/LED	Wide Flood	10	MP Term	10-15V	RGB-W + 2700K	80	800 (max)	40,000	Yes	1/6	32°	2.40"	50	No

Not for use in enclosed luminaires. May not be compatible with all electronic transformers. Rated for outdoor use only.

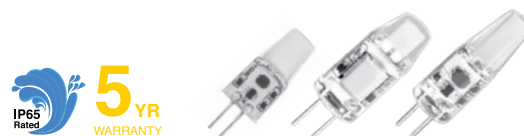
ProLED IP Rated LED JC Series



Product #	Product Code	Description	Wattage	Base	Voltage	Color Temp.	CRI	Lumens	Useful Life ¹	Dimmable ²	Pkg. Qty.	MOL	Equivalent Wattage	Energy Star	
JC2S															
81091	JC2S/827/LED2	IP65 Rated	1.4	G4	10-15V	2700K	82	140	40,000	No	1/10	0.98"	20	No	
81092	JC2S/830/LED2	IP65 Rated	1.4	G4	10-15V	3000K	82	150	40,000	No	1/10	0.98"	20	No	
JC2															
81109	JC2/827/LED2	Omnidirectional, IP65 Rated	2.3	G4	10-15V	2700K	82	250	40,000	No	1/10	1.57"	20	No	
81108	JC20/2WW/LED2	Omnidirectional, IP65 Rated	2.3	G4	10-15V	3000K	82	250	40,000	No	1/10	1.57"	20	No	
JC10															
80810	JC10/1WW/BA15S/LED2	IP65 Rated	1.5	BA15s	10-18V	3000K	82	100	40,000	No	1/10	1.93"	10	No	
JC20															
81100	JC20/2WW/BA15S/LED2	IP65 Rated	2.3	BA15s	10-15V	3000K	82	250	40,000	No	1/10	2.00"	20	No	
81102	912/1WW/LED2	IP65 Rated	1.2	Wedge	10-15V	3000K	82	120	40,000	No	1/10	1.51"	10	No	
81101	3155/2WW/LED2	IP65 Rated	2.3	Wedge	10-15V	3000K	82	250	40,000	No	1/10	1.67"	20	No	

May not be compatible with electronic transformers.
Suitable for use in sealed metal landscape luminaires.
IP65 rated lamps are rated for use outdoors where exposed directly to water from rain or irrigation.
This lamp is not for submersible use.

ProLED Omnidirectional IP65 JC Lamps



Product #	Product Code	Description	Wattage	Base	Voltage	Color Temp.	CRI	Lumens	Useful Life ¹	Dimmable ²	Pkg. Qty.	MOL	Equivalent Wattage	Energy Star
81998	JC1/830/OMNI/IP65/LED	IP65 Rated	1.2	G4	10-15V	3000K	82	110	15,000	No	1/10	1.18"	10	No
81999	JC2/830/OMNI/IP65/LED	IP65 Rated	2	G4	10-15V	3000K	82	200	15,000	No	1/10	1.46"	20	No
81996	JC3/830/OMNI/IP65/LED	IP65 Rated	2.5	G4	10-15V	3000K	82	300	15,000	No	1/10	1.61"	20	No

Warranty – Commercial / Industrial: This product is warranted for 5 years from the date of purchase. Not for use on dimmers, timing devices, photo sensors or occupancy sensors.
May not be compatible with electronic transformers.
Suitable for use in sealed metal landscape luminaires.
IP65 rated lamps are rated for use outdoors where exposed directly to water from rain or irrigation.
This lamp is not for submersible use.

¹ Useful Life is defined as the point in time at which the LED will maintain at least 70% of its initial lumens. The LED will continue to operate past this point at decreased light levels.

² May not be compatible with all Dimming systems, Dimming performance may vary by system. Please check www.halcolighting.com for up-to-date dimmer compatibility information. Use on incompatible systems may shorten lamp life.

ProLED Traditional JC Series



Product #	Product Code	Description	Wattage	Base	Voltage	Color Temp.	CRI	Lumens	Useful Life ¹	Dimmable ²	Pkg. Qty.	MOL	Equivalent Wattage	Energy Star
Mini Wedge														
80791	912/1WWW/LED	Omnidirectional	1 Watt	Wedge	10-18V	3000K	82	75	20,000	Yes	1/50	1.18"	10	No
JC10														
80692	JC10/1WWW/BA15S/LED	Omnidirectional	1.5 Watt	BA15s	10-24V	3000K	82	150	30,000	Yes	1/40	1.70"	10	No
80693	JC10/1WWW/LED	Omnidirectional	1.5 Watt	G4	10-24V	3000K	82	150	30,000	No	1/10	1.21"	10	No
JC20														
80691	JC20/2WWW/BA15S/LED	Omnidirectional	2.4 Watt	BA15s	10-24V	3000K	82	250	30,000	Yes	1/40	2.01"	20	No
80833	JC2/827/LED	Omnidirectional	2.4 Watt	G4	10-24V	2700K	82	240	30,000	No	1/10	1.81"	20	No
80690	JC20/2WWW/LED	Omnidirectional	2.4 Watt	G4	10-24V	3000K	82	250	30,000	No	1/40	1.81"	20	No
80815	JC20/2NW/LED	Omnidirectional	2.4 Watt	G4	10-24V	5000K	82	260	30,000	No	1/10	1.81"	20	No
JC35														
80830	JC35/4WWW/LED	Omnidirectional	4.5 Watt	GY6.35	10-18V	3000K	82	450	30,000	No	1/30	1.71"	35	No
JC50														
81997	JC50/5WWW/LED	Omnidirectional	5.5 Watt	GY6.35	10-18V	3000K	82	550	30,000	No	1/30	1.71"	50	No

May not be compatible with all electronic transformers.
 Not for use in enclosed luminaires. Suitable for use in sealed metal landscape luminaires; standard JC lamps require protection from elements.
 The lamp is not submersible nor for use in enclosed luminaires. Suitable for use in sealed metal landscape luminaires.

ProLED Traditional LED Series: JC3 G4



Product #	Product Code	Description	Wattage	Base	Voltage	Color Temp.	CRI	Lumens	Useful Life ¹	Dimmable ²	Pkg. Qty.	MOL	Equivalent Wattage	Energy Star
81078	JC3VWFL/827/LED	Very Wide Flood	3.3	G4	12V	2700K	82	200	25,000	No	1/10	1.38"	20	No

May not be compatible with all electronic transformers.
 Not for use in enclosed luminaires. Suitable for use in sealed metal landscape luminaires; standard JC lamps require protection from elements.
 IP65 rated lamps are rated for use outdoors where exposed directly to water from rain or irrigation. The lamp is not submersible nor for use in enclosed luminaires. Suitable for use in sealed metal landscape luminaires.

¹ Useful Life is defined as the point in time at which the LED will maintain at least 70% of its initial lumens. The LED will continue to operate past this point at decreased light levels.
² May not be compatible with all Dimming systems, Dimming performance may vary by system. Please check www.halcolighting.com for up-to-date dimmer compatibility information. Use on incompatible systems may shorten lamp life.



Visit **halcolighting.com** for the most up-to-date product information, specification sheets, IES files and more!

sollos[®]

LANDSCAPE LIGHTING

The Art of Outdoor Illumination

Bringing over 40 years of experience in landscape lighting, Sollos offers a full portfolio of quality LED products engineered for the best performance offering dynamic functionality to provide safety, security and quality illumination. Whether you are looking for path lighting for a single walkway or a full portfolio of products for a complete transformation of your outdoor space

– **Sollos has what you need!**

Contact your rep today to learn more about Sollos Landscape Lighting.

To find out more about the complete product portfolio, visit solloslighting.com.



COLORSPASH MR16 RGB-W LAMP

- Innovative color-changing technology that includes color and white in a single lamp
- Bluetooth compatible
- 80 CRI
- 5-year warranty



SMART TRANSFORMER

- Low voltage Bluetooth power supply
- Multiple taps (14V)
- Pre-loaded programs
- Control with Eclipse APP



PATH LIGHT

- Available in a variety of finishes
- 12", 15" or 18" stem options
- Clear polycarbonate lens with dual silicon gaskets



ACCENT LIGHT – BULLET

- Available in a variety of finishes
- 3ft. 18-2 lead wire
- Clear tempered glass lens

Halco[®]

LIGHTING TECHNOLOGIES

Where there's *light* there's *Halco*
Complete Portfolio of *Indoor* and *Outdoor* Lamps & Fixtures

www.halcolighting.com

Sign up for MyHalco Today



My Halco is an online portal that lets you access your account 24/7

- **Obtain Product Pricing**
- **Check Product Availability**
- **Place Orders and Review Open Orders**
- **Track Shipments**
- **Download Invoices and Monthly Statements**

Best of all – you can download your price list any time you want!

Signing up is easy. Look for MyHalco on the home page of the website, click on it and you will be directed to the sign-up page. Complete a short online application and within 24 hours you will receive a password to begin using My Halco.

Don't delay – sign up at halcolighting.com!



800.677.3334
FAX: 800.880.0822
www.halcolighting.com

Atlanta
2940 Pacific Drive
Norcross, GA 30071

Houston
6323 Brookhill Drive
Houston, TX 77087

Phoenix
3103 E. Broadway, Ste 100
Phoenix, AZ 85040

Chicago
1220 Central Avenue
Hanover Park, IL 60133

Los Angeles
4820 Schaefer Avenue
Chino, CA 91710

Cleveland
3501 Croton Avenue
Cleveland, OH 44115

Southern California
14300 Alondra Blvd
La Mirada, CA 90638