

30mm Command/52, Chrome Finish Heavy Duty, Watertight/Oiltight Point-of-Purchase Kit Push-Pull Operator Non-Illuminated Mushroom Head Cap Small 1 3/4" (44.5 mm) Plastic Cap, Red 2 Position Maintained, Pull-to-Release with 1 N.O. - 1 N.C. Heavy Duty Contacts, A600/P600 UL Listed, CSA Certified NEMA 1,3,3R,4,4X,12,13 & Automotive Standards 1 52NL04R (STOP) and 1 52NL04 (STOP) Legend Plate 1 Yellow Backing Plate with Text: EMERGENCY STOP

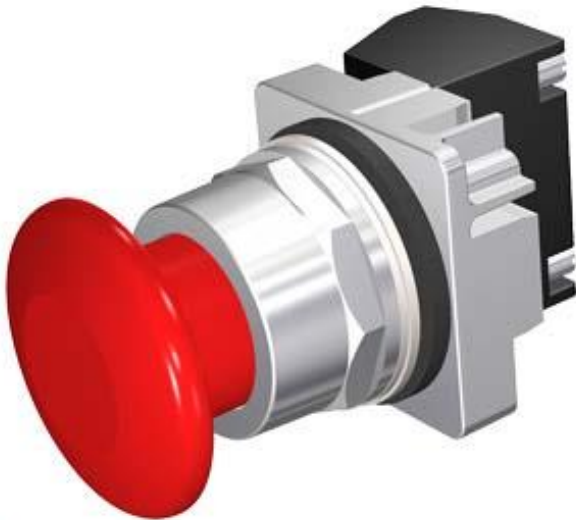


Figure similar

| Enclosure | |
|-----------------------------------|---------------------------|
| Number of command points | 1 |
| Delivery state | |
| • as a kit | No |
| Actuator | |
| Material of the actuating element | plastic |
| Number of contact modules | 1 |
| Type of unlocking device | pull-to-unlatch mechanism |
| Number of switching positions | 2 |
| Front ring | |
| Product component front ring | Yes |
| Design of the front ring | standard |
| Material of the front ring | metal |
| General technical data | |
| Product function | |
| • positive opening | Yes |

| | |
|---------------------------------------------|-------|
| Product component | |
| • Light source | No |
| Insulation voltage | |
| • rated value | 600 V |
| Surge voltage resistance rated value | 4 kV |
| Protection class IP | IP66 |
| • of the terminal | IP20 |
| Thermal current | 10 A |

Auxiliary circuit

| | |
|-----------------------------------------------------|------|
| Number of NC contacts for auxiliary contacts | 1 |
| Number of NO contacts for auxiliary contacts | 1 |
| Operating current at AC-15 | |
| • at 110 V rated value | 60 A |
| • at 230 V rated value | 30 A |
| • at 400 V rated value | 15 A |
| • at 500 V rated value | 12 A |

Connections/ Terminals

| | |
|-------------------------------------------------------|----------------------|
| Type of electrical connection | screw-type terminals |
| Tightening torque of the screws in the bracket | 20 N·m |
| Tightening torque [lbf·in] | |
| • with screw-type terminals | 8 lbf·in |

Ambient conditions

| | |
|----------------------------|----------------|
| Ambient temperature | |
| • during operation | -35 ... +70 °C |
| • during storage | -40 ... +85 °C |

Installation/ mounting/ dimensions

| | |
|------------------------------------------|-------|
| Shape of the installation opening | round |
|------------------------------------------|-------|

Certificates/ approvals

Further information

Information- and Downloadcenter (Catalogs, Brochures,...)

www.siemens.com/ic10

Industry Mall (Online ordering system)

<https://mall.industry.siemens.com/mall/en/en/Catalog/product?mlfb=US2:52PP2W2AP>

Cax online generator

<http://support.automation.siemens.com/WW/CAXorder/default.aspx?lang=en&mlfb=US2:52PP2W2AP>

Service&Support (Manuals, Certificates, Characteristics, FAQs,...)

<https://support.industry.siemens.com/cs/ww/en/ps/US2:52PP2W2AP>

Image database (product images, 2D dimension drawings, 3D models, device circuit diagrams, EPLAN macros, ...)

http://www.automation.siemens.com/bilddb/cax_de.aspx?mlfb=US2:52PP2W2AP&lang=en

last modified:

12/18/2019