

90° ELBOWS

(SOCKET) IPS & CTS

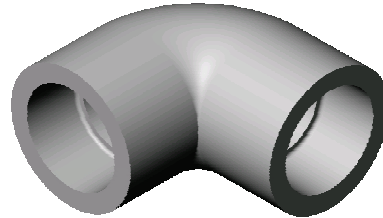
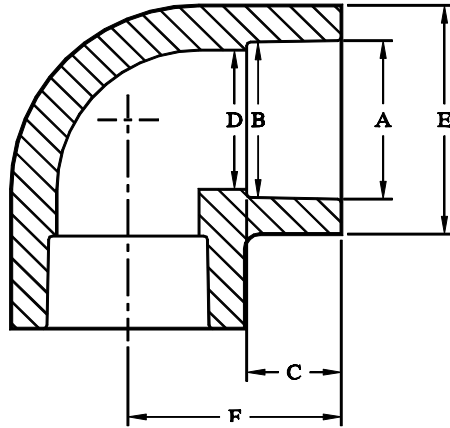
SOCKET FUSION FITTINGS



GEORG FISCHER
PIPING SYSTEMS

GEORG FISCHER CENTRAL PLASTICS

39605 Independence, Shawnee, OK, 74804 | 1.800.654.3872 | www.gfcp.com



NOMINAL SIZE	A DIAMETER	B DIAMETER	C DEPTH	D I.D.	E O.D.	G O.A.L.
1/2" CTS	.585 ^{+0.010} _{-0.007}	.575 ^{+0.010} _{-0.007}	.661	.520 ±.015	1.180 ±.032	1.31
	14.86 mm	14.61 mm	16.79 mm	13.21 mm	29.97 mm	33.3 mm
1/2" IPS	.810 ^{+0.005} _{-0.010}	.804 ^{+0.005} _{-0.026}	.660	.693 ±.015	1.202 ±.032	1.31
	20.57 mm	20.42 mm	16.76 mm	17.60 mm	30.53 mm	33.3 mm
3/4" IPS	1.020 ±.008	1.012 ^{+0.008} _{-0.012}	.750	.870 ±.015	1.500 ±.032	1.63
	25.91 mm	25.70 mm	19.05 mm	22.10 mm	38.10 mm	41.4 mm
1" CTS	1.075 ±.008	1.070 ^{+0.008} _{-0.012}	.775	.880 ±.015	1.500 ±.032	1.63
	27.31 mm	27.18 mm	19.69 mm	22.35 mm	38.10 mm	41.4 mm
1" IPS	1.275 ±.008	1.267 ^{+0.008} _{-0.012}	.776	1.124 ±.015	1.831 ±.032	1.69
	32.39 mm	32.18 mm	19.71 mm	28.55 mm	46.51 mm	42.9 mm
1 1/4" IPS	1.620 ±.008	1.612 ^{+0.008} _{-0.016}	.990	1.440 ±.015	2.270 ±.032	2.09
	41.15 mm	40.94 mm	25.15 mm	36.58 mm	57.66 mm	53.1 mm
1 1/2" IPS	1.860 ±.010	1.849 ^{+0.010} _{-0.020}	.980	1.723 ±.015	2.635 ±.032	2.33
	47.24 mm	46.96 mm	24.89 mm	43.76 mm	66.93 mm	59.2 mm
2" IPS	2.335 ±.010	2.324 ^{+0.010} _{-0.020}	1.000	2.170 ±.015	3.280 ±.020	2.73
	59.31 mm	59.03 mm	25.40 mm	55.12 mm	83.31 mm	69.3 mm
3" IPS	3.455 ±.015	3.439 ^{+0.015} _{-0.025}	1.171	3.240 ±.060	5.210 ±.130	4.13
	87.76 mm	87.35 mm	29.74 mm	82.30 mm	132.33 mm	104.9 mm
4" IPS	4.450 ±.015	4.434 ±.005	1.348	4.250 ±.060	6.400 ±.130	5.50
	113.03 mm	112.62 mm	34.24 mm	107.95 mm	162.56 mm	139.7 mm