

PRODUCT SPECIFICATIONS SHEET**COMPRESSION MALE ADAPTER**

Available Sizes: .5" MPT x .5" IPS

.75" MPT x .5" IPS

.75" MPT x .75" IPS

1" MPT x 1" CTS

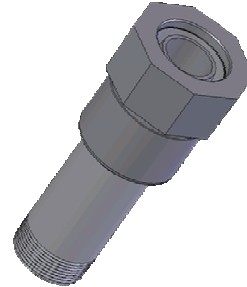
1" MPT x 1" IPS

1" MPT x 1.25" IPS

1.25" MPT x 1.25" IPS

1.5" MPT x 1.5" IPS

2" MPT x 2" IPS



Georg Fischer Central Plastics (GFCP) is proud to offer a line of high performance, high quality compression fittings that are safe and economical. Our line of compression fittings reflect over 50 years of common-sense engineering for the gas utility industry.

Compression Body

- Carbon Steel C12L14 Grade

Compression Nut

- Malleable Cast Iron per ASTM A197

Cup Washer

- Steel Coil Commercial Grade

Compression Gasket

- Rubber Compound, 70 Durometer per ASTM D2000 3AA 7i5 B13F17

Stiffener

- Carbon Steel C1010/1020 Grade

Epoxy Coating (Option)

- Epoxy Powder Coating – Gray – Lilly (Cooks) #720-A-115 or equivalent)

Meets The Requirements of ASTM D2513

Recommended for use in connecting polyethylene natural gas pipes.