

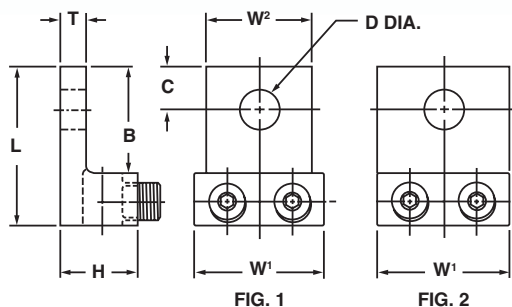
Aluminum Dual Rated Lugs - One Hole Tongue Type L2A

For use with two copper or aluminum conductors

- Manufactured from high strength aluminum alloy extrusion
- Electro-tin plated to ensure minimum contact resistance and corrosion protection
- Connectors are rated for 600 V, 90° C applications
- The use of oxide inhibitor is recommended for all aluminum terminations



486A-486B
LISTED
AL9CU



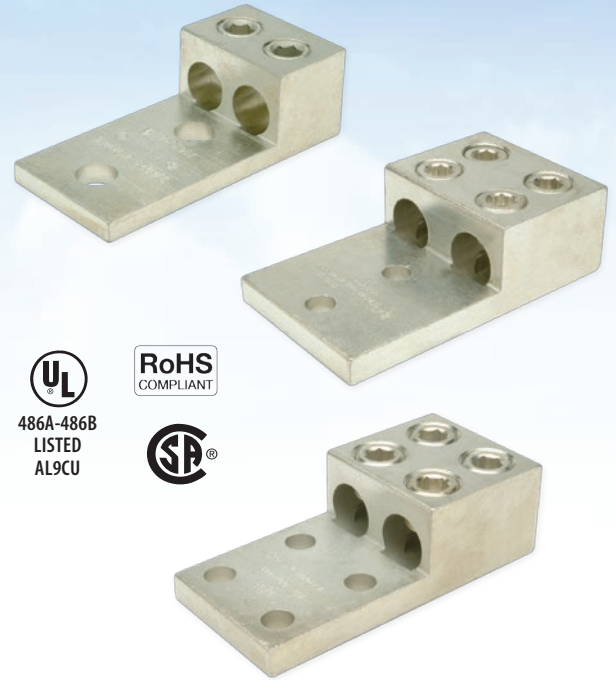
CATALOG NUMBER	FIG. NO.	CONDUCTOR RANGE	APPROXIMATE DIMENSIONS (IN.)								MTG. BOLT SIZE	HEX SIZE
			L	W ¹	W ²	H	T	B	C	D (DIA.)		
L2A-0	2	14 Str. - 1/0 Str.	1.47	1.13	-	.78	.18	.84	.44	.27	1/4	SLOT
L2A-2/0	2	14 Str. - 2/0 Str.	1.47	1.25	-	.78	.18	.84	.42	.27	1/4	SLOT
L2A-250	2	6 Str. - 250 kcmil	2.56	1.64	-	1.18	.25	1.56	.88	.41	3/8	5/16
L2A-350	1	6 Str. - 350 kcmil	2.88	1.94	1.75	1.25	.25	1.75	.56	.53	1/2	3/8
L2A-500	1	4 Str. - 500 kcmil	3.13	2.38	1.98	1.56	.44	1.75	.63	.53	1/2	3/8
L2A-600	1	2 Str. - 600 kcmil	3.13	2.38	1.98	1.56	.44	1.75	.63	.53	1/2	1/2
L2A-800	2	350 - 800 kcmil	3.50	3.50	-	1.94	.50	1.88	.88	.66	5/8	1/2
L2A-1000	2	500 - 1000 kcmil	3.50	3.50	-	1.94	.50	1.88	.88	.66	5/8	1/2

Aluminum Dual Rated Lugs - Two or Four Hole Tongue

Type L2A

For use with two copper or aluminum conductors

- Manufactured from high strength aluminum alloy extrusion
- Electro-tin plated to ensure minimum contact resistance and protection against corrosion when used with copper wire
- Two and four hole mounting pad allows for maximum surface contact in heavy duty applications
- Larger connector sizes utilize tandem set screws that provide superior mechanical performance*
- Connectors are rated for 600 V, 90°C applications
- The use of oxide inhibitor is recommended for all aluminum terminations



486A-486B
LISTED
AL9CU

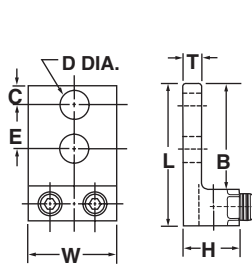


FIG. 1

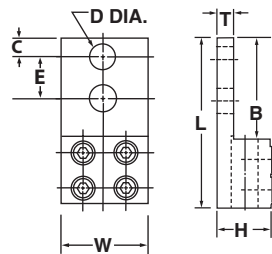


FIG. 2

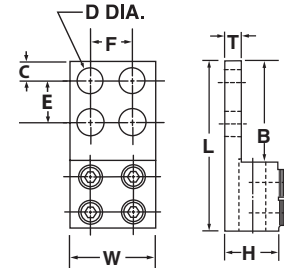


FIG. 3

CATALOG NUMBER	FIG. NO.	CONDUCTOR RANGE	APPROXIMATE DIMENSIONS (IN.)									MTG. BOLT SIZE	HEX SIZE
			L	W	H	T	B	C	D (DIA.)	E	F		
L2A-350-2	1	6 Str. - 350 kcmil	4.19	1.94	1.25	.25	3.06	.63	.56	1.75	-	1/2	3/8
L2A-600-2	1	2 Str. - 600 kcmil	4.69	2.44	1.56	.44	3.31	.63	.56	1.75	-		3/8
*L2A-800-2	2	300 - 800 kcmil	6.19	3.50	1.88	.56	3.44	.63	.56	1.75	-		1/2
*L2A-800-4	3		6.19	3.50	1.88	.56	3.44	.63	.56	1.75	1.75		1/2
*L2A-1000-2	2	500 - 1000 kcmil	6.19	3.50	1.88	.56	3.44	.63	.56	1.75	-		1/2
*L2A-1000-4	3		6.19	3.50	1.88	.56	3.44	.63	.56	1.75	1.75		1/2