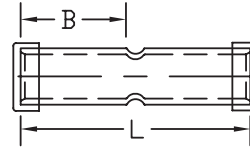


## Crimp Splice - Standard Barrel

### Type BCUA

- Manufactured from high conductivity seamless aluminum tubing
- Tin-plated and factory prefilled with oxide inhibitor compound
- Beveled entry for easy cable insertion
- Positive cable stops to ensure proper insertion of conductors to full depth
- Color coding conforms to industry standards ensuring proper die selection and providing for a faster installation
- Connectors are marked with catalog number, wire size, die index and crimp locations
- End caps provided to prevent foreign materials from entering and contaminating the connector prior to usage
- Connectors are suitable for voltages up to 35 KV if taped according to accepted practices, 5 KV is the maximum voltage level in all bare splice applications
- Connectors are UL listed and CSA certified with Penn-Union, Burndy, T&B, Huskie and Greenlee tooling



### BCUA DIMENSIONS & INSTALLATION TOOLING INSTRUCTIONS

CATALOG NUMBER	ALUMINUM & COPPER CONDUCTOR SIZE	FIGURE DIMENSIONS (IN.)			INSTALLATION TOOLING			
		INSERTION LENGTH "B"	OVERALL LENGTH "L"	COLOR CODE	PENN-UNION DIELESS MECHANICAL TOOLS	BURNDY DIE INDEX NO.	PENN-UNION DIE CATALOG NO.	WIRE STRIP LENGTH
BCUA-8	8 AWG	.81	1.75	Blue	TDM-250 or TDM-500	374	T-374	7/8"
BCUA-6	6 AWG	.81	1.75	Gray		346	T-346	7/8"
BCUA-4	4 AWG	.88	1.88	Green		375	T-375	1"
BCUA-2	2 AWG	1.13	2.38	Pink		348	T-348	1-1/4"
BCUA-1	1 AWG	.91	1.94	Gold		471	T-471	1-1/16"
BCUA-1/0	1/0 AWG	1.00	2.13	Tan		296	T-296	1-1/8"
BCUA-2/0	2/0 AWG	1.09	2.31	Olive		297	T-297	1-1/4"
BCUA-3/0	3/0 AWG	1.25	2.63	Ruby		467	T-467	1-3/8"
BCUA-4/0	4/0 AWG	1.31	2.75	White		298	T-298	1-7/16"
BCUA-025	250 kcmil	1.41	2.94	Red		324	T-324	1-9/16"
BCUA-030	300 kcmil	1.50	3.13	Blue	TDM-500	470	T-470	1-5/8"
BCUA-035	350 kcmil	1.63	2.38	Brown		299	T-299	1-3/4"
BCUA-040	400 kcmil	1.81	3.75	Green		472	T-472	2"
BCUA-050	500 kcmil	1.88	3.88	Pink		300	T-300	2-1/16"
BCUA-060	600 kcmil	2.00	4.13	Black		473	T-473	2-3/16"
BCUA-075	750 kcmil	2.25	4.63	Red		301	T-301P	2-7/16"
BCUA-080	800 kcmil	2.31	4.75	Gray		474	T-474P	2-1/2"
BCUA-090+	900 kcmil AL 600 kcmil CU	2.46	5.45	Gray		303*	-	2-9/16"
BCUA-100	1000 kcmil	2.56	5.25	Brown		302	T-302P	2-3/4"
BCUA-150	1500 kcmil	3.19	6.50	-		478	-	3-5/16"
BCUA-200	2000 kcmil	3.69	7.50	-	479	-	3-11/16"	

+ The following dieless compression tools are approved to be used on 600-900 kcmil aluminum and 600 kcmil copper:  
TPU-6FT, TFU-6FTB, TPU-6FTH, HDT-1000 and HDT-1000B

\* The Burndy 303 die is for use with 900 kcmil aluminum only

- Connectors from 6 AWG - 1000 kcmil are UL listed per UL486A-B and CSA certified per C22.2 No.65 for POWER applications