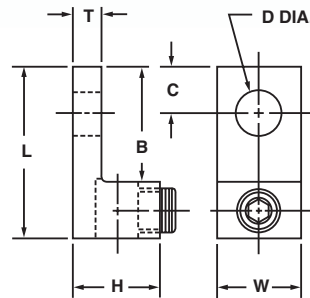


Aluminum Dual Rated Lugs - One Hole Tongue Type LA

For use with one copper or aluminum conductor

- Manufactured from high strength aluminum alloy extrusion
- Electro-tin plated to ensure minimum contact resistance and protection against corrosion when used with copper wire
- Connectors are rated for 600 V, 90°C applications
- The use of oxide inhibitor is recommended for all aluminum terminations



CATALOG NUMBER	CONDUCTOR RANGE	APPROXIMATE DIMENSIONS (IN.)							MTG. BOLT SIZE	HEX SIZE
		L	W	H	T	B	C	D (DIA.)		
LA-6	14 Str. - 4 Str.	1.06	.50	.50	.09	.69	.25	.27	1/4	Slot
LA-2	14 Str. - 2 Str.	1.16	.50	.55	.11	.69	.31	.27	1/4	Slot
LA2-516*	14 Str. - 2 Str.	1.16	.50	.56	.10	.69	.31	.33	5/16	Slot
LA-0	14 Str. - 1/0 Str.	1.47	.63	.78	.19	.84	.42	.27	1/4	Slot
LA-2/0	14 Str. - 2/0 Str.	1.47	.63	.80	.19	.84	.44	.27	1/4	3/16
LA-250	6 Str. - 250 kcmil	2.00	1.00	1.13	.25	1.00	.45	.33	5/16	3/8
LA-350	6 Str. - 350 kcmil	2.25	1.13	1.25	.25	1.13	.50	.41	3/8	3/8
LA-500	4 Str. - 500 kcmil	2.81	1.25	1.56	.31	1.56	.88	.41	3/8	3/8
LA-600	2 Str. - 600 kcmil	3.13	1.50	1.56	.44	1.81	.88	.53	3/8	3/8
LA-800	300 - 800 kcmil	3.50	1.75	1.94	.50	1.88	.81	.66	5/8	1/2
LA-1000+	500 - 1000 kcmil	3.50	1.75	1.94	.50	1.88	.81	.66	5/8	1/2

* UL listed only

+ UL listed and CSA certified