

445891-000 ✓ ACTIVE

Raychem | Raychem TFT

TE Internal #: 445891-000

Raychem TFT, Power Cable Terminations, AMERICAS, Cold

Applied / Cold Shrink, Power Cable Termination Voltage Class \leq 15

kV, Tape, 1 Core

[View on TE.com >](#)



Power Systems > Power Cable Accessories > Terminations > Indoor and Outdoor Cable Terminations



Power Cable Termination Product Availability: **AMERICAS**

Power Cable Termination Technology: **Cold Applied, Cold Shrink**

Power Cable Termination Voltage Class: **\leq 15 kV**

Cable Shield Style: **Tape**

Number of Cores: **1**

[All Indoor and Outdoor Cable Terminations \(20\)](#)

Features

Product Type Features

Shelf Life	3 Years
Power Cable Termination Technology	Cold Applied, Cold Shrink
Cable Shield Style	Tape
Insulation	Plastic
Sheds per Phase	3
Mechanical Connectors Included	No
Product Family	TFT

Configuration Features

Number of Cores	1
-----------------	---

Electrical Characteristics

Power Cable Termination Voltage Class	\leq 15 kV
---------------------------------------	--------------

Dimensions

	500 – 750 AWG/kcmil
Power Cable Termination Insulation Diameter	26.92 – 43.18 mm[1.06 – 1.7 in]
Length (Installed)	292.1 mm[11.5 in]
Power Cable Termination Conductor Diameter	20.57 – 25.4 mm[.81 – 1 in]



Operation/Application

Application Type	Indoor/Outdoor
------------------	----------------

Industry Standards

Design Specification	IEEE 48
----------------------	---------

Product Availability

Power Cable Termination Product Availability	AMERICAS
--	----------

Product Compliance

[For compliance documentation, visit the product page on TE.com>](#)

EU RoHS Directive 2011/65/EU	Compliant
EU ELV Directive 2000/53/EC	Compliant
China RoHS 2 Directive MIIT Order No 32, 2016	No Restricted Materials Above Threshold
EU REACH Regulation (EC) No. 1907/2006	Current ECHA Candidate List: JUN 2020 (209) Candidate List Declared Against: JUN 2016 (169) Does not contain REACH SVHC
Halogen Content	Not Yet Reviewed for halogen content
Solder Process Capability	Not applicable for solder process capability

Product Compliance Disclaimer

This information is provided based on reasonable inquiry of our suppliers and represents our current actual knowledge based on the information they provided. This information is subject to change. The part numbers that TE has identified as EU RoHS compliant have a maximum concentration of 0.1% by weight in homogenous materials for lead, hexavalent chromium, mercury, PBB, PBDE, DBP, BBP, DEHP, DIBP, and 0.01% for cadmium, or qualify for an exemption to these limits as defined in the Annexes of Directive 2011/65/EU (RoHS2). Finished electrical and electronic equipment products will be CE marked as required by Directive 2011/65/EU. Components may not be CE marked. Additionally, the part numbers that TE has identified as EU ELV compliant have a maximum concentration of 0.1% by weight in homogenous materials for lead, hexavalent chromium, and mercury, and 0.01% for cadmium, or qualify for an exemption to these limits as defined in the Annexes of Directive 2000/53/EC (ELV). Regarding the REACH Regulations, TE's information on SVHC in articles for this part number is still based on the European Chemical Agency (ECHA) 'Guidance on requirements for substances in articles' (Version: 2, April 2011), applying the 0.1% weight on weight concentration threshold at the finished product level. TE is aware of the European Court of Justice ruling of September 10th, 2015 also known as O5A (Once An Article Always An Article) stating that, in case of 'complex object', the threshold for a SVHC must be applied to both the product as a whole and simultaneously to each of the articles forming part of its composition. TE has evaluated this ruling based on the new ECHA "Guidance on requirements for substances in articles" (June 2017, version 4.0) and will be updating its statements accordingly.

Also in the Series | [Raychem TFT](#)



Power Cable Terminations(45)

Customers Also Bought



TE Model / Part #277013-000
In-Line Splices For 3/C Armored
Cables



TE Model / Part #CF9557-000
In-Line Joint: Cold Shrink, 15-35 kV



TE Model / Part #607863-000
Indoor and Outdoor Cable
Terminations



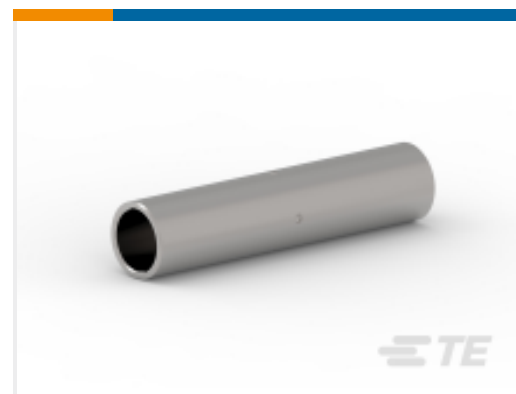
TE Model / Part #972191-000
Medium-Wall Heat Shrink Tubing



TE Model / Part #EE5628-000
Load Break Elbow: 200A, 15 and 25 kV



TE Model / Part #CM0003-005
Screened Separable Connectors 1250
A



TE Model / Part #1-1443403-6
COMP SPLICE CU, LB 750 UTILUX

Documents

Datasheets & Catalog Pages

[TOOL FREE TERMINATION \(TFT-R\) 5/8-35kV](#)

English

Instruction Sheets

[Instruction Sheet \(U.S.\)](#)

English

[Instruction Sheet \(U.S.\)](#)

English

[Instruction Sheet \(U.S.\)](#)

English

[Instruction Sheet \(U.S.\)](#)

English