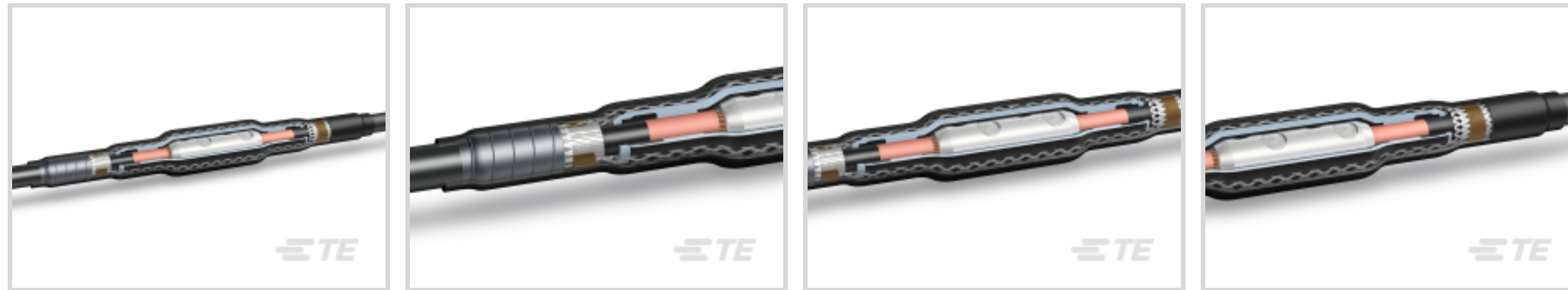




Power Systems > Power Cable Accessories > Joints & Splices > In-Line Joint: Cold Shrink, 15-35 kV



Joints & Splice Product Availability: **AMERICAS**

Installation Instruction: **English**

Joints & Splice Technology: **Cold Applied, Cold Shrink**

Joints & Splice Voltage Class: **≤ 35 kV**

Joint & Splice Application Type: **Inline**

[All In-Line Joint: Cold Shrink, 15-35 kV \(31\)](#)

Features

Product Type Features

Joints & Splice Technology	Cold Applied, Cold Shrink
Joints & Splice Product Type	Medium Voltage Inline Joint
Insulation	Silicone Rubber
Cable Shield Style	Tape
Mechanical Connectors Included	No
Connector Type	Mechanical
Product Family	CSJA

Configuration Features

Number of Cores	1
-----------------	---

Electrical Characteristics

Joints & Splice Voltage Class	≤ 35 kV
-------------------------------	---------

Dimensions

	1/0 – 350 AWG/kcmil
Joints & Splice Insulation Diameter	26.12 – 37.84 mm[1.03 – 1.49 in]
Joints & Splice Conductor Diameter	9.47 – 17.29 mm[.373 – .681 in]
Sheath Outside Diameter	52.07 mm[2.05 in]



Operation/Application

Joint & Splice Application Type	Inline
---------------------------------	--------

Industry Standards

Design Specification	IEEE 404
----------------------	----------

Product Availability

Joints & Splice Product Availability	AMERICAS
--------------------------------------	----------

Packaging Features

Packaging Quantity	1
--------------------	---

Other

Installation Instruction	English
--------------------------	---------

Product Compliance

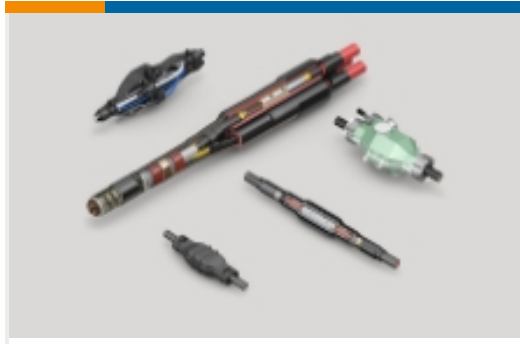
[For compliance documentation, visit the product page on TE.com>](#)

EU RoHS Directive 2011/65/EU	Compliant
EU ELV Directive 2000/53/EC	Compliant
China RoHS 2 Directive MIIT Order No 32, 2016	No Restricted Materials Above Threshold
EU REACH Regulation (EC) No. 1907/2006	Current ECHA Candidate List: JUN 2020 (209) Candidate List Declared Against: JUN 2016 (169) Does not contain REACH SVHC
Halogen Content	Not Yet Reviewed for halogen content
Solder Process Capability	Not applicable for solder process capability

Product Compliance Disclaimer

This information is provided based on reasonable inquiry of our suppliers and represents our current actual knowledge based on the information they provided. This information is subject to change. The part numbers that TE has identified as EU RoHS compliant have a maximum concentration of 0.1% by weight in homogenous materials for lead, hexavalent chromium, mercury, PBB, PBDE, DBP, BBP, DEHP, DIBP, and 0.01% for cadmium, or qualify for an exemption to these limits as defined in the Annexes of Directive 2011/65/EU (RoHS2). Finished electrical and electronic equipment products will be CE marked as required by Directive 2011/65/EU. Components may not be CE marked. Additionally, the part numbers that TE has identified as EU ELV compliant have a maximum concentration of 0.1% by weight in homogenous materials for lead, hexavalent chromium, and mercury, and 0.01% for cadmium, or qualify for an exemption to these limits as defined in the Annexes of Directive 2000/53/EC (ELV). Regarding the REACH Regulations, TE's information on SVHC in articles for this part number is still based on the European Chemical Agency (ECHA) 'Guidance on requirements for substances in articles' (Version: 2, April 2011), applying the 0.1% weight on weight concentration threshold at the finished product level. TE is aware of the European Court of Justice ruling of September 10th, 2015 also known as O5A (Once An Article Always An Article) stating that, in case of 'complex object', the threshold for a SVHC must be applied to both the product as a whole and simultaneously to each of the articles forming part of its composition. TE has evaluated this ruling based on the new ECHA "Guidance on requirements for substances in articles" (June 2017, version 4.0) and will be updating its statements accordingly.

Also in the Series | Raychem CSJA



Joints & Splices(112)

Customers Also Bought



TE Model / Part #974893-000
One Core Polymeric Cables Termination



TE Model / Part #1974138-1
Shear Bolt Connectors up to 35 kV



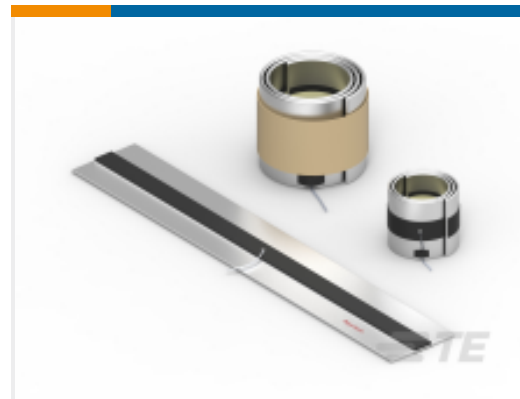
TE Model / Part #EN2950-000
COLD SHRINK JOINT FOR URD CABLES



TE Model / Part #EA3541-000
In-Line Joint: Cold Shrink, 15-35 kV



TE Model / Part #1856043-1
Mechanical Connectors & Repair Sleeves



TE Model / Part #C26475-000
RDSS-150(S3)



TE Model / Part #C70612-000
BISG-G-60/115-02(S10)

Documents

Datasheets & Catalog Pages

[CSJA COLD SHRINK IN-LINE JOINTS IEEE](#)

English