



HISCO®

Professional Tools

www.hisco-okc.com

Built For Performance!

Product Catalog
2013/2014

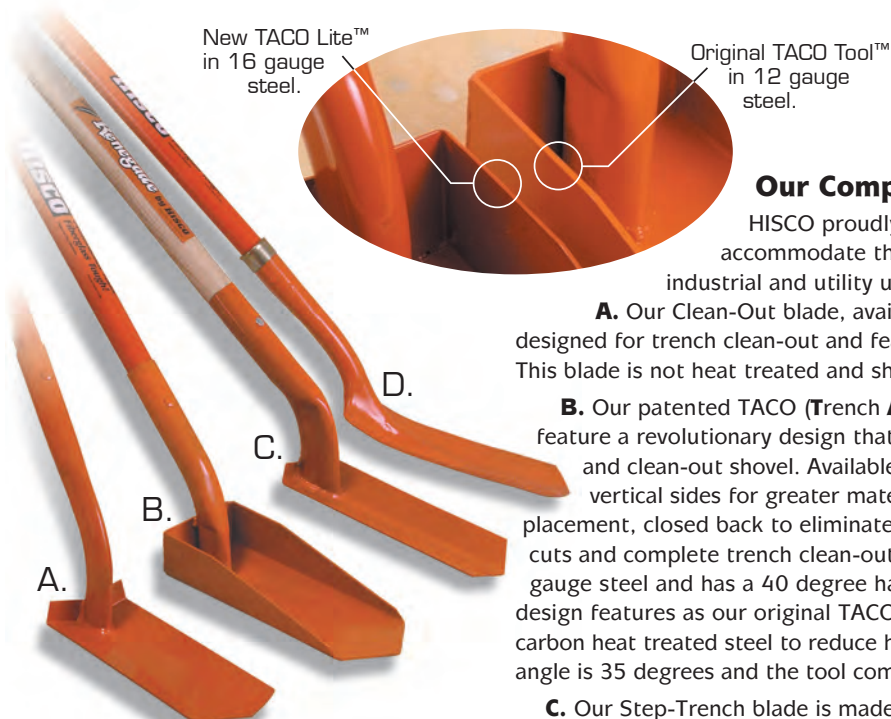


Professional Tools Built For Performance!

Introduction

After 35 years, HISCO's mission continues to focus on providing our customers the highest quality professional grade hand tools. This 2013/2014 Product Catalog is a culmination of our dedication to that mission. In this catalog, you will see that we continue to add new tools to further meet your specific needs and preferences. In addition to our original line of the best fiberglass-handled tools available, we now offer our Renegade line of high quality domestic ash-and-hickory-handled tools, and our Maverick line of imported ash-handled tools.

Regardless of your choice, you can be assured that HISCO will provide you the highest quality professional grade hand tools on the market.



Our Comprehensive Trench Shovel Line-Up

HISCO proudly offers four styles of trench shovel blades to accommodate the various needs of our underground, irrigation, industrial and utility users.

A. Our Clean-Out blade, available in 3-inch and 4-inch widths, is specifically designed for trench clean-out and features a flat blade and 60-inch high-angle handle. This blade is not heat treated and should **not** be used as a digging tool.

B. Our patented TACO (**T**rench **A**nd **C**lean-**O**ut) Tool™ and our new TACO Lite™ feature a revolutionary design that combines all of the features of a trench shovel and clean-out shovel. Available in 3-inch and 4-inch widths, this design features vertical sides for greater material retention, an improved heel for secure foot placement, closed back to eliminate material build up, and a flat bottom for clean cuts and complete trench clean-out. Our original TACO Tool™ is made of a heavy 12-gauge steel and has a 40 degree handle angle. Our new TACO Lite™ has the same design features as our original TACO Tool™ but is made of a lighter 16-gauge high carbon heat treated steel to reduce head weight while maximizing strength. The handle angle is 35 degrees and the tool comes in three handle lengths.

C. Our Step-Trench blade is made of 14-gauge high carbon heat treated steel and comes in 3-inch, 4-inch, 5-inch and 6-inch widths. The blade is the standard in the trench tool industry and is primarily used for digging.

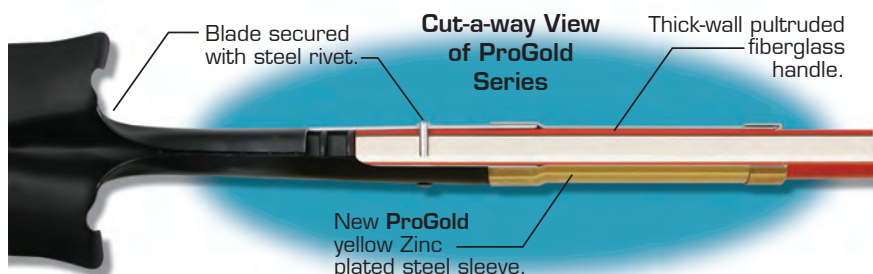
D. Our Classic trench shovel blade is the original design of trench blades and is available in a 4-inch width. This slightly rounded blade with no step can be used for digging and trench clean-out. No matter what your demands are, HISCO has the right tool for the job!



HISCO's new **Undertaker™** makes placing cable and conduit in trenches effortless. The guide tip is made of non-conductive, fiberglass filled hard nylon and is attached to our non-conductive one-half inch solid fiberglass rod with a "T" handle and polyvinyl butt grips. This tool is a must for laying telephone, television and low voltage landscape lighting cable and conduit, as well as residential and commercial underground sprinkler lines. Combine the new Undertaker™ with any of our HICAT cable trenchers for all of your short-run drop cable projects.

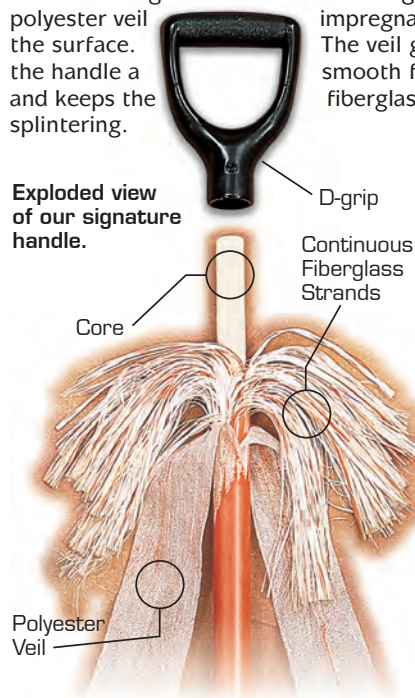
Introducing HISCO's New ProGold Series

The HISCO new **ProGold Series** of tools is a testament to our unwavering commitment to provide our customers with superior digging tools designed for intensive professional use. Our ProGold series of tools combines features of high quality steel blades and solid shank blades with a super strong thick-walled pultruded fiberglass handle or our 500 Series solid fiberglass handles. The HISCO ProGold extended steel sleeve with a weather resistant yellow Zink coating fits over the neck of the blade extending the natural stress point of the shovel handle, eight-inches on long handled tools and six-inches on short handled tools, providing unparalleled handle and head-to-handle strength. The ProGold extended steel sleeve also provides protection from handle abrasion.



Our Handle on Quality

Hollow fiberglass handles may be fine for recreational use but if you must rely on your hand tools everyday, HISCO's fiberglass handles have a legacy of premium performance. All HISCO handles are produced from thousands of continuous strands of fiberglass saturated with thermosetting resins and a non-fiberglass polyester veil impregnated on the surface. The veil gives the handle a smooth finish and keeps the fiberglass from splintering.



Private Labeling of Handles



One of the many benefits of purchasing HISCO products is participation in our Private Label Program. With an initial pre-paid freight order, we build your tools to order and complete them with your company label on the handle FREE of charge. Your company label will then be stored for future orders. You will also have the option of having your fiberglass-made with our HISCO handles or our high visibility yellow fiberglass. The choice is yours! It is an easy way to advertise your company without expensive costs. Call HISCO customer service for further details.



This front-end loader, weighing 4800 lbs., is supported by two of our long-handled hollow back shovels.

Other Quality HISCO Handles

1. HISCO's workhorse handle is solid fiberglass and we use this handle on our 500 Series tools, digging bars and cant hooks. Unsurpassed in strength, the weight of the handle becomes an asset when digging in hard, compact and rocky soils or when using the tool to cut through tree roots.

2. Our signature fiberglass handle used on our digging tools features a thick wall fiberglass tube, which is less flexible than poly-molded handles, and has a solid fiberglass inner core in the base followed by a polystyrene core through the remaining portion of the handle. The solid fiberglass core extends the stress point above the critical neck or collar portion of the handle which increases its overall strength and durability. The handles used on our roofing tools and scoop type tools, that are not usually subjected to the same types of stress as digging tools, feature the same thick wall fiberglass tube and a polystyrene core throughout.

3. On tools that require less strength, such as our rakes, brooms, lutes and hoes, we use our fiberglass handle with a honeycomb plastic core.

4. All of our long handle digging tools feature our new 8-inch Tufffoam double-dip grips which have been designed for the toughest industrial applications. The grips feature a durable, vinyl inner liner and a comfortable, non-slip foam exterior that provides long life and helps prevent potential harmful hand fatigue.

5. Our D-Grips, used on short and mid-length handled tools, are made of one-piece high-density nylon. Rake and hoe handles have durable polyvinyl butt grips.



Benefits of Fiberglass:

- Greater strength pound for pound than steel.
- Will not transmit heat or cold, and will not conduct electricity.
- Will not absorb moisture or warp.
- Is non-corrosive and resistant to acids and other chemicals.
- Is highly resistant to temperature changes.
- Resists impact, is non-denting and difficult to damage.
- Minimizes handle breakage and saves on-the-job downtime.

ProGold Series

HISCO ProGold series of tools combine features of high quality steel blades and solid shank blades with a super strong thick-walled pultruded fiberglass handle with a solid wood core throughout. Our 500 Series feature a solid fiberglass handle. The HISCO ProGold yellow Zink coated steel sleeve fits over the neck of the blade extending the natural stress point of the shovel providing unparalleled handle and head-to-handle strength. Our ProGold steel sleeve also protects the handle from abrasion.



HISCO ProGold...
Breaking The Rules With
Ground Breaking Tools!

Model	Description	Blade	Handle	Grip	Nominal Wt.
HIRPLG	Size: 2 Round Point	Hollow Back 8 ³ / ₄ " x 11 ³ / ₄ "	47" Fiberglass	Double-dip	5.25 lbs.
HIRPDG	Size: 2 Round Point	Hollow Back 8 ³ / ₄ " x 11 ³ / ₄ "	27" Fiberglass	D-grip	4.25 lbs.
HISPLG	Size: 2 Square Point	Hollow Back 9 ³ / ₄ " x 11 ¹ / ₂ "	47" Fiberglass	Double-dip	5.25 lbs.
HISPDG	Size: 2 Square Point	Hollow Back 9 ³ / ₄ " x 11 ¹ / ₂ "	27" Fiberglass	D-grip	4.00 lbs.
HIGSLG	Size: 2 Garden Spade	Hollow Back 6 ⁷ / ₈ " x 10 ⁵ / ₈ "	48" Fiberglass	Double-dip	4.75 lbs.
HIGSDG	Size: 2 Garden Spade	Hollow Back 6 ⁷ / ₈ " x 10 ⁵ / ₈ "	28" Fiberglass	D-grip	3.60 lbs.
HISS14LG	14" Drain Spade/Sharp Shooter	Hollow Back 5 ³ / ₄ " x 14"	48" Fiberglass	Double-dip	4.75 lbs.
HISS14DG	14" Drain Spade/Sharp Shooter	Hollow Back 5 ³ / ₄ " x 14"	30" Fiberglass	D-grip	4.00 lbs.
HISS16LG	16" Drain Spade/Sharp Shooter	Hollow Back 5 ³ / ₄ " x 16"	48" Fiberglass	Double-dip	5.25 lbs.
HISS16DG	16" Drain Spade/Sharp Shooter	Hollow Back 5 ³ / ₄ " x 16"	30" Fiberglass	D-grip	4.10 lbs.

HISCO is proud to introduce the "Mud Shovel", or "Holy Shovel" as it is commonly called. Developed by Toolite®, U.S. Patent 5,601,325 and additional international patents, this shovel performs remarkably in wet soil or damp clay. Holes in the blade allow mud and clay to release effortlessly, while draining excess fluid. The holes decrease the surface area of the blade making it lightweight yet strong.



Order Toll Free
1-800-331-8410

Model	Description	Blade	Handle	Grip	Nominal Wt.
HI550LG	Size: 2 Caprock Irrigation	Solid Shank 8 ⁷ / ₈ " x 10"	47" Solid Fiberglass	Double-dip	7.25 lbs.
HI551LG	Size: 2 Caprock Irrigation	Solid Shank 8 ⁷ / ₈ " x 10"	53" Solid Fiberglass	Double-dip	7.80 lbs.
HIST3-4G	3" Step Trench Shovel	Steel, Forward Step 3" x 10 ¹ / ₂ "	47" Fiberglass	Double-dip	4.00 lbs.
HIST4-4G	4" Step Trench Shovel	Steel, Forward Step 4" x 10 ¹ / ₂ "	47" Fiberglass	Double-dip	4.25 lbs.
HIST5-4G	5" Step Trench Shovel	Steel, Forward Step 5" x 10 ¹ / ₂ "	47" Fiberglass	Double-dip	4.75 lbs.
HIST6-4G	6" Step Trench Shovel	Steel, Forward Step 6" x 10 ¹ / ₂ "	47" Fiberglass	Double-dip	5.00 lbs.
HIRPMSL	Size: 2 Mud Round Point	Hollow Back 8 ¹ / ₄ " x 11 ¹ / ₂ "	47" Fiberglass	Double-dip	4.95 lbs.
HIRPMSD	Size: 2 Mud Round Point	Hollow Back 8 ¹ / ₄ " x 11 ¹ / ₂ "	27" Fiberglass	D-grip	4.45 lbs.
HISPMSL	Size: 2 Mud Square Point	Hollow Back 8 ³ / ₄ " x 11 ¹ / ₄ "	47" Fiberglass	Double-dip	4.95 lbs.
HISPMSD	Size: 2 Mud Square Point	Hollow Back 8 ³ / ₄ " x 11 ¹ / ₄ "	27" Fiberglass	D-grip	4.45 lbs.



HIRP14L



HIRP14D



HIRP14MD



HIRP14L-W



HIRP14D-W



HIRP14MD-W



HIRP14L-M

HISCO's Hollow Back Round Point Blades

are stamped from a single piece of steel with forward turned steps for secure and comfortable foot placement. Handles are attached with a single rivet. Fiberglass and Renegade models feature a reinforcing metal collar at the neck.

Ideal for light to moderate industrial and construction applications, these lighter heads are more economical than solid shank blades making hollow back tools our most popular models.

Model	Description	Blade	Handle	Grip	Nominal Wt.
HIRP14L	Size: 2 Round Point	Hollow Back 8 ⁷ / ₈ " x 11 ³ / ₄ "	47" Fiberglass	Double-dip	5.00 lbs.
HIRP14D	Size: 2 Round Point	Hollow Back 8 ⁷ / ₈ " x 11 ³ / ₄ "	27" Fiberglass	D-grip	4.50 lbs.
HIRP14MD	Size: 2 Round Point	Hollow Back 8 ⁷ / ₈ " x 11 ³ / ₄ "	40" Fiberglass	D-grip	5.00 lbs.
HIRP14L-W	Size: 2 Round Point	Hollow Back 8 ⁹ / ₁₆ " x 11"	48" Ash	None	4.00 lbs.
HIRP14D-W	Size: 2 Round Point	Hollow Back 8 ⁹ / ₁₆ " x 11"	27" Ash	D-grip	4.00 lbs.
HIRP14MD-W	Size: 2 Round Point	Hollow Back 8 ⁹ / ₁₆ " x 11"	40" Ash	D-grip	4.50 lbs.
HIRP14L-M	Size: 2 Round Point	Hollow Back 8 ⁷ / ₁₆ " x 11 ⁷ / ₁₆ "	47" Ash	None	4.25 lbs.



Closed Back Blade
reduces soil build-up
and adds strength to
the blade.



HISCO's Closed Back Blades are stamped from a single piece of steel and the hollow back, known as the "frog", is welded closed with a steel plate to reduce soil build-up and add strength. Blades have forward turned steps for secure and comfortable foot placement. Handles are attached with a single rivet and feature a reinforcing metal collar at neck.



Solid Shank Premium Blades are forged from a single bar of steel, the solid neck and blade of these tools are extremely durable. Fiberglass handles are attached with rivet and reinforcing metal collar for increased strength. Non-shouldered Ash handles with these blades feature double rivets.

Designed for heavy-duty industrial and contractor use, these tools are sure to perform on the most demanding job sites.

Order Toll Free
1-800-331-8410

Model	Description	Blade	Handle	Grip	Nominal Wt.
HIRP14L-CB	Size: 2 Round Point	Closed Back 8 ⁷ / ₈ " x 11 ³ / ₄ "	47" Fiberglass	Double-dip	5.00 lbs.
HIRP14D-CB	Size: 2 Round Point	Closed Back 8 ⁷ / ₈ " x 11 ³ / ₄ "	27" Fiberglass	D-grip	4.00 lbs.
HIRP14LW-CB	Size: 2 Round Point	Closed Back 8 ⁹ / ₁₆ " x 11"	48" Ash	None	4.00 lbs.
HIRP14DW-CB	Size: 2 Round Point	Closed Back 8 ⁹ / ₁₆ " x 11"	27" Ash	D-grip	4.50 lbs.
HIRPSB14D	Size: 2 Round Point	Solid Shank 8 ³ / ₄ " x 11 ¹ / ₂ "	27" Fiberglass	D-grip	5.00 lbs.
HIRPSB14L	Size: 2 Round Point	Solid Shank 8 ³ / ₄ " x 11 ¹ / ₂ "	47" Fiberglass	Double-dip	5.30 lbs.
HI520D	Size: 2 Round Point	Solid Shank 8 ³ / ₄ " x 11 ¹ / ₂ "	27" Solid Fiberglass	D-grip	5.75 lbs.
HI520L	Size: 2 Round Point	Solid Shank 8 ³ / ₄ " x 11 ¹ / ₂ "	47" Solid Fiberglass	Double-dip	7.50 lbs.



HISCO's Rice Shovel Blades are perforated to allow water and silt to drain from the blade when digging in moist/wet soil or when moving other wet materials.

Hollow back blades are an economical alternative to our heavier solid shank blades.

Solid Shank Blades are forged from a single bar of steel with solid neck and blade. Our fiberglass handles have a reinforcing metal collar, and our ash handles feature double rivets.

Model	Description	Blade	Handle	Grip	Nominal Wt.
HIRSL	Size: 2 Perforated Rice	Hollow Back 8 ³ / ₈ " x 10 ¹ / ₄ "	47" Fiberglass	Double-dip	4.50 lbs.
HIRSD	Size: 2 Perforated Rice	Hollow Back 8 ³ / ₈ " x 10 ¹ / ₄ "	27" Fiberglass	D-grip	4.00 lbs.
HIRSL-W	Size: 2 Perforated Rice	Hollow Back 8 ³ / ₈ " x 10 ¹ / ₄ "	47" Ash	None	4.00 lbs.
HIRSD-W	Size: 2 Perforated Rice	Hollow Back 8 ³ / ₈ " x 10 ¹ / ₄ "	27" Ash	D-grip	3.50 lbs.
HIRSSBL	Size: 2 Perforated Rice	Solid Shank 8 ⁷ / ₈ " x 10"	47" Fiberglass	D-grip	4.75 lbs.
HI550L	Size: 2 Caprock Irrigation	Solid Shank 8 ⁷ / ₈ " x 10"	47" Solid Fiberglass	Double-dip	7.50 lbs.
HIIRSLH	Size: 2 Caprock Irrigation	Solid Shank 8 ⁷ / ₈ " x 10"	47" Fiberglass	Double-dip	4.75 lbs.
HIIRSLH-W	Size: 2 Caprock Irrigation	Solid Shank 8 ⁷ / ₈ " x 10"	47" Ash	None	4.25 lbs.
HIISL	Size: 00 Irrigation	Solid Shank 7 ¹ / ₄ " x 9 ¹ / ₂ "	47" Fiberglass	Double-dip	5.50 lbs.
HIISD	Size: 00 Irrigation	Solid Shank 7 ¹ / ₄ " x 9 ¹ / ₂ "	27" Fiberglass	D-grip	4.50 lbs.
HIISMD	Size: 00 Irrigation	Solid Shank 7 ¹ / ₄ " x 9 ¹ / ₂ "	40" Fiberglass	D-grip	5.00 lbs.
HIISL-W	Size: 00 Irrigation	Solid Shank 7 ¹ / ₄ " x 9 ¹ / ₂ "	47" Ash	None	5.00 lbs.
HIISD-W	Size: 00 Irrigation	Solid Shank 7 ¹ / ₄ " x 9 ¹ / ₂ "	27" Ash	D-grip	4.50 lbs.
HIISMD-W	Size: 00 Irrigation	Solid Shank 7 ¹ / ₄ " x 9 ¹ / ₂ "	40" Ash	D-grip	5.25 lbs.

HISCO's Small Head Irrigation/Floral Shovels

are stamped from a single piece of steel with forward turned steps. These hollow back round point shovels, also known as "plumber's shovels", are perfect for work in tight areas as well as, light duty nursery, gardening and camping applications.



HISCO's Hollow Back Square Point Blades are stamped from a single piece of steel with forward turned steps for secure and comfortable foot placement. Handles are attached with a single rivet. Fiberglass and Renegade models feature a reinforcing metal collar at the neck.

Order Toll Free
1-800-331-8410

Model	Description	Blade	Handle	Grip	Nominal Wt.
HISHISLH	Small-head Irrigating/Floral	Hollow Back 6" x 8 1/2"	46" Fiberglass	Vinyl	2.75 lbs.
HISHISSH	Small-head Irrigating/Floral	Hollow Back 6" x 8 1/2"	27" Fiberglass	D-grip	2.50 lbs.
HISHISSH-L	Small-head Irrigating/Floral	Hollow Back 6" x 8 1/2"	18" Fiberglass	D-grip	2.00 lbs.
HISP2L	Size: 2 Square Point	Hollow Back 8 5/8" x 11 1/4"	47" Fiberglass	Double-dip	4.75 lbs.
HISP2D	Size: 2 Square Point	Hollow Back 8 5/8" x 11 1/4"	27" Fiberglass	D-grip	4.25 lbs.
HISP2MD	Size: 2 Square Point	Hollow Back 8 5/8" x 11 1/4"	40" Fiberglass	D-grip	4.75 lbs.
HISP2L-W	Size: 2 Square Point	Hollow Back 8 5/8" x 11 1/4"	47" Ash	None	4.50 lbs.
HISP2D-W	Size: 2 Square Point	Hollow Back 8 5/8" x 11 1/4"	28" Ash	D-grip	4.00 lbs.
HISP2MD-W	Size: 2 Square Point	Hollow Back 8 5/8" x 11 1/4"	40" Ash	D-grip	4.75 lbs.
HISP2L-M	Size: 2 Square Point	Hollow Back 9 1/4" x 11 1/4"	47" Ash	None	4.50 lbs.



HISCO's Solid Shank Premium Blades are forged from a single bar of steel, the solid neck and blade of these tools are extremely durable. Fiberglass handles are attached with a reinforcing metal collar and riveted for increased strength. Non-shouldered ash handles with these blades feature double rivets.

Designed for heavy-duty industrial and contractor use, these tools are sure to perform on the most demanding job sites.

Model	Description	Blade	Handle	Grip	Nominal Wt.
HISP2L-CB	Size: 2 Square Point	Closed Back 8 ⁵ / ₈ " x 11 ¹ / ₄ "	47" Fiberglass	Double-dip	4.75 lbs.
HISP2D-CB	Size: 2 Square Point	Closed Back 8 ⁵ / ₈ " x 11 ¹ / ₄ "	27" Fiberglass	D-grip	4.30 lbs.
HISP2MD-CB	Size: 2 Square Point	Closed Back 8 ⁵ / ₈ " x 11 ¹ / ₄ "	40" Fiberglass	D-grip	4.50 lbs.
HISP2LW-CB	Size: 2 Square Point	Closed Back 8 ⁵ / ₈ " x 11 ¹ / ₄ "	47" Ash	None	4.50 lbs.
HISP2DW-CB	Size: 2 Square Point	Closed Back 8 ⁵ / ₈ " x 11 ¹ / ₄ "	28" Ash	D-grip	4.25 lbs.
HISP2MDW-CB	Size: 2 Square Point	Closed Back 8 ⁵ / ₈ " x 11 ¹ / ₄ "	40" Ash	D-grip	4.80 lbs.
HISPSB2L	Size: 2 Square Point	Solid Shank 9 ³ / ₄ " x 12"	47" Fiberglass	Double-dip	5.50 lbs.
HISPSB2D	Size: 2 Square Point	Solid Shank 9 ³ / ₄ " x 12"	27" Fiberglass	D-grip	5.35 lbs.
HI510L	Size: 2 Square Point	Solid Shank 9 ³ / ₄ " x 12"	47" Solid Fiberglass	Double-dip	7.75 lbs.
HI510D	Size: 2 Square Point	Solid Shank 9 ³ / ₄ " x 12"	27" Solid Fiberglass	D-grip	6.00 lbs.

HISCO's Hollow Back Drain Spade Blades are stamped from a single piece of steel with forward turned steps for secure and comfortable foot placement. Handles are attached with a single rivet. Fiberglass and Renegade models feature a reinforcing metal collar at the neck.



HISS14L



HISS14D



HISS14MD



HISS14L-W



HISS14D-W



HISS14MD-W



HISS14D-M

Model	Description	Blade	Handle	Grip	Nominal Wt.
HISS14L	14" Drain Spade/Sharp Shooter	Hollow Back 5 ³ / ₄ " x 14"	48" Fiberglass	Double-dip	5.00 lbs.
HISS14D	14" Drain Spade/Sharp Shooter	Hollow Back 5 ³ / ₄ " x 14"	30" Fiberglass	D-grip	4.25 lbs.
HISS14MD	14" Drain Spade/Sharp Shooter	Hollow Back 5 ³ / ₄ " x 14"	40" Fiberglass	D-grip	4.75 lbs.
HISS14L-W	14" Drain Spade/Sharp Shooter	Hollow Back 5 ³ / ₄ " x 14"	49" Ash	None	4.50 lbs.
HISS14D-W	14" Drain Spade/Sharp Shooter	Hollow Back 5 ³ / ₄ " x 14"	30" Ash	D-grip	3.75 lbs.
HISS14MD-W	14" Drain Spade/Sharp Shooter	Hollow Back 5 ³ / ₄ " x 14"	40" Ash	D-grip	4.00 lbs.
HISS14D-M	14" Drain Spade/Sharp Shooter	Hollow Back 5 ³ / ₄ " x 14"	31" Ash	Steel/Wood D-grip	4.00 lbs.



HISS14D-CB

HISS14DW-CB

HISS14L-CB

HISS14LW-CB

Closed Back Blade
reduces soil build-up
and adds strength
to the blade.

HISCO's Closed Back Blades

are stamped from a single piece of steel and the hollow back welded closed with a steel plate. Blades have forward turned steps for secure and comfortable foot placement. Handles are attached with a single rivet and feature a reinforcing metal collar at the neck.



HISSSB14D

HI530D

HISSSB14L

HI530L

HISCO's Solid Shank Premium Blades

are forged from a single bar of steel, the solid neck and blade of these tools are extremely durable. Fiberglass handles are attached with a rivet and reinforcing metal collar for increased strength. Non-shouldered ash handles with these blades feature double rivets.

Designed for heavy-duty industrial and contractor use, these tools are sure to perform on the most demanding job sites.

Model	Description	Blade	Handle	Grip	Nominal Wt.
HISS14L-CB	14" Drain Spade/Sharp Shooter	Closed Back 5 ³ / ₄ " x 14"	48" Fiberglass	Double-dip	5.25 lbs.
HISS14D-CB	14" Drain Spade/Sharp Shooter	Closed Back 5 ³ / ₄ " x 14"	30" Fiberglass	D-grip	4.75 lbs.
HISS14LW-CB	14" Drain Spade/Sharp Shooter	Closed Back 5 ³ / ₄ " x 14"	49" Ash	None	4.25 lbs.
HISS14DW-CB	14" Drain Spade/Sharp Shooter	Closed Back 5 ³ / ₄ " x 14"	30" Ash	D-grip	4.25 lbs.
HISSSB14L	14" Drain Spade/Sharp Shooter	Solid Shank 5 ¹ / ₂ " x 14"	47" Fiberglass	Double-dip	5.50 lbs.
HISSSB14D	14" Drain Spade/Sharp Shooter	Solid Shank 5 ¹ / ₂ " x 14"	28" Fiberglass	D-grip	4.50 lbs.
HI530L	14" Drain Spade/Sharp Shooter	Solid Shank 5 ¹ / ₂ " x 14"	47" Solid Fiberglass	Double-dip	7.00 lbs.
HI530D	14" Drain Spade/Sharp Shooter	Solid Shank 5 ¹ / ₂ " x 14"	27" Solid Fiberglass	D-grip	5.75 lbs.



Model	Description	Blade	Handle	Grip	Nominal Wt.
HISS16L	16" Drain Spade/Sharp Shooter	Hollow Back 5 ³ / ₄ " x 16"	49" Fiberglass	Double-dip	5.00 lbs.
HISS16D	16" Drain Spade/Sharp Shooter	Hollow Back 5 ³ / ₄ " x 16"	28" Fiberglass	D-grip	4.50 lbs.
HISS16L-W	16" Drain Spade/Sharp Shooter	Hollow Back 5 ³ / ₄ " x 16"	49" Ash	None	4.50 lbs.
HISS16D-W	16" Drain Spade/Sharp Shooter	Hollow Back 5 ³ / ₄ " x 16"	30" Ash	D-grip	4.00 lbs.
HISS16L-CB	16" Drain Spade/Sharp Shooter	Closed Back 5 ³ / ₄ " x 16"	49" Fiberglass	Double-dip	5.00 lbs.
HISS16D-CB	16" Drain Spade/Sharp Shooter	Closed Back 5 ³ / ₄ " x 16"	30" Fiberglass	D-grip	4.25 lbs.
HISS16LW-CB	16" Drain Spade/Sharp Shooter	Closed Back 5 ³ / ₄ " x 16"	49" Ash	None	4.50 lbs.
HISS16DW-CB	16" Drain Spade/Sharp Shooter	Closed Back 5 ³ / ₄ " x 16"	30" Ash	D-grip	4.25 lbs.
HISSB16L	16" Drain Spade/Sharp Shooter	Solid Shank 5 ¹ / ₂ " x 16"	47" Fiberglass	Double-dip	5.25 lbs.
HISSB16D	16" Drain Spade/Sharp Shooter	Solid Shank 5 ¹ / ₂ " x 16"	28" Fiberglass	D-grip	4.50 lbs.
HI540L	16" Drain Spade/Sharp Shooter	Solid Shank 5 ¹ / ₂ " x 16"	47" Solid Fiberglass	Double-dip	7.50 lbs.
HI540D	16" Drain Spade/Sharp Shooter	Solid Shank 5 ¹ / ₂ " x 16"	27" Solid Fiberglass	D-grip	5.80 lbs.

HISCO's Hollow Back Garden Spade Blades are stamped from a single piece of steel with rolled back steps. Handles are attached with a single rivet. Fiberglass and Renegade models feature a reinforcing metal collar at the neck.

Ideal for light to moderate industrial and construction applications, these lighter heads are more economical than solid shank blades making hollow back tools our most popular models.



HISCO's Closed Back Blades are stamped from a single piece of steel with rolled back steps. The hollow back is welded closed with a steel plate. Handles are attached with a single rivet and feature a reinforcing metal collar at the neck.



Model	Description	Blade	Handle	Grip	Nominal Wt.
HIGS2L	Size: 2 Garden Spade	Hollow Back 7" x 11"	48" Fiberglass	Double-dip	4.80 lbs.
HIGS2D	Size: 2 Garden Spade	Hollow Back 7" x 11"	28" Fiberglass	D-grip	4.25 lbs.
HIGS2MD	Size: 2 Garden Spade	Hollow Back 7" x 11"	40" Fiberglass	D-grip	4.50 lbs.
HIGS2L-W	Size: 2 Garden Spade	Hollow Back 7" x 11"	48" Ash	None	4.50 lbs.
HIGS2D-W	Size: 2 Garden Spade	Hollow Back 7" x 11"	28" Ash	D-grip	4.00 lbs.
HIGS2MD-W	Size: 2 Garden Spade	Hollow Back 7" x 11"	40" Ash	D-grip	4.75 lbs.
HIGS2L-CB	Size: 2 Garden Spade	Closed Back 6 ⁷ / ₈ " x 10 ⁵ / ₈ "	48" Fiberglass	Double-dip	4.85 lbs.
HIGS2D-CB	Size: 2 Garden Spade	Closed Back 6 ⁷ / ₈ " x 10 ⁵ / ₈ "	28" Fiberglass	D-grip	4.25 lbs.
HIGS2MD-CB	Size: 2 Garden Spade	Closed Back 6 ⁷ / ₈ " x 10 ⁵ / ₈ "	40" Fiberglass	D-grip	4.75 lbs.
HIGS2LW-CB	Size: 2 Garden Spade	Closed Back 6 ⁷ / ₈ " x 10 ⁵ / ₈ "	48" Ash	None	4.50 lbs.
HIGS2DW-CB	Size: 2 Garden Spade	Closed Back 6 ⁷ / ₈ " x 10 ⁵ / ₈ "	28" Ash	D-grip	4.25 lbs.
HIGS2MDW-CB	Size: 2 Garden Spade	Closed Back 6 ⁷ / ₈ " x 10 ⁵ / ₈ "	40" Ash	D-grip	4.50 lbs.



HIGSSB2L



HIGSSB2D



HI570L



HI570D



HIPSLH



HIPSSH



HI500L



HI500D

HISCO's Solid Shank Premium Blades are forged from a single bar of steel, the solid neck and blade of these tools are extremely durable. Fiberglass handles are attached with a reinforcing metal collar and riveted for increased strength. Non-shouldered ash handles on these blades feature double rivets.

Designed for heavy-duty commercial and contractor use, these tools are sure to perform on the most demanding job sites.

Order Toll Free

1-800-331-8410

Model	Description	Blade	Handle	Grip	Nominal Wt.
HIGSSB2L	Size: 2 Garden Spade	Solid Shank 7 1/2" x 12"	47" Fiberglass	Double-dip	4.80 lbs.
HIGSSB2D	Size: 2 Garden Spade	Solid Shank 7 1/2" x 12"	27" Fiberglass	D-grip	4.55 lbs.
HI570L	Size: 2 Garden Spade	Solid Shank 7 1/2" x 12"	47" Solid Fiberglass	Double-dip	7.50 lbs.
HI570D	Size: 2 Garden Spade	Solid Shank 7 1/2" x 12"	27" Solid Fiberglass	D-grip	5.75 lbs.
HIPSLH	Size: 16 Ditch/Post Spade	Solid Shank 6 1/4" x 16"	47" Fiberglass	Double-dip	5.80 lbs.
HIPSSH	Size: 16 Ditch/Post Spade	Solid Shank 6 1/4" x 16"	27" Fiberglass	D-grip	5.00 lbs.
HI500L	Size: 16 Ditch/Post Spade	Solid Shank 6 1/4" x 16"	47" Solid Fiberglass	Double-dip	7.75 lbs.
HI500D	Size: 16 Ditch/Post Spade	Solid Shank 6 1/4" x 16"	27" Solid Fiberglass	D-grip	6.00 lbs.



Model	Description	Blade	Handle	Grip	Nominal Wt.
HISGS2L	Size: 2 Sand/Gravel/Bunk Scoop	Steel 11" x 15"	47" Fiberglass	Double-dip	5.50 lbs.
HISGS2D	Size: 2 Sand/Gravel/Bunk Scoop	Steel 11" x 15"	27" Fiberglass	D-grip	5.00 lbs.
HISGS2MD	Size: 2 Sand/Gravel/Bunk Scoop	Steel 11" x 15"	38" Fiberglass	D-grip	5.25 lbs.
HISGS2L-W	Size: 2 Sand/Gravel/Bunk Scoop	Steel 11" x 15"	47" Ash	None	5.25 lbs.
HISGS2D-W	Size: 2 Sand/Gravel/Bunk Scoop	Steel 11" x 15"	27" Ash	D-grip	5.25 lbs.
HISGS2MD-W	Size: 2 Sand/Gravel/Bunk Scoop	Steel 11" x 15"	38" Ash	D-grip	5.50 lbs.
HIGPSLH	Size: 2 General Purpose/Street Scoop	Steel 11" x 14 ¹ / ₄ "	44" Fiberglass	Double-dip	5.25 lbs.
HIGPSSH	Size: 2 General Purpose/Street Scoop	Steel 11" x 14 ¹ / ₄ "	27" Fiberglass	D-grip	4.75 lbs.
HIGPSMD	Size: 2 General Purpose/Street Scoop	Steel 11" x 14 ¹ / ₄ "	37" Fiberglass	D-grip	5.00 lbs.
HIGPSLH-W	Size: 2 General Purpose/Street Scoop	Steel 11" x 14 ¹ / ₄ "	45" Ash	None	4.50 lbs.
HIGPSSH-W	Size: 2 General Purpose/Street Scoop	Steel 11" x 14 ¹ / ₄ "	25" Ash	D-grip	4.50 lbs.
HIGPSMD-W	Size: 2 General Purpose/Street Scoop	Steel 11" x 14 ¹ / ₄ "	38" Ash	D-grip	4.25 lbs.



Model	Description	Blade	Handle	Grip	Nominal Wt.
HIASL	Eastern Pattern Asphalt Scoop	Steel 11" x 15"	44" Fiberglass	Double-dip	5.25 lbs.
HIASD	Eastern Pattern Asphalt Scoop	Steel 11" x 15"	27" Fiberglass	D-grip	5.25 lbs.
HIASMD	Eastern Pattern Asphalt Scoop	Steel 11" x 15"	38" Fiberglass	D-grip	5.50 lbs.
HIASL-W	Eastern Pattern Asphalt Scoop	Steel 11" x 15"	45" Ash	None	5.50 lbs.
HIASD-W	Eastern Pattern Asphalt Scoop	Steel 11" x 15"	26" Ash	D-grip	5.00 lbs.
HIASMD-W	Eastern Pattern Asphalt Scoop	Steel 11" x 15"	37" Ash	D-grip	5.25 lbs.
HISC2L	Size: 2 Western Pattern Ribbed Coal	Steel 13" x 14 1/2"	45" Fiberglass	Double-dip	5.50 lbs.
HISC2D	Size: 2 Western Pattern Ribbed Coal	Steel 13" x 14 1/2"	27" Fiberglass	D-grip	5.50 lbs.
HISC2MD	Size: 2 Western Pattern Ribbed Coal	Steel 13" x 14 1/2"	37" Fiberglass	D-grip	5.75 lbs.
HISC2L-W	Size: 2 Western Pattern Ribbed Coal	Steel 13" x 14 1/2"	47" Ash	None	5.50 lbs.
HISC2D-W	Size: 2 Western Pattern Ribbed Coal	Steel 13" x 14 1/2"	27" Ash	D-grip	5.50 lbs.
HISC2MD-W	Size: 2 Western Pattern Ribbed Coal	Steel 13" x 14 1/2"	37" Ash	D-grip	5.75 lbs.



Model	Description	Blade	Handle	Grip	Nominal Wt.
HIAGS2L	Size: 2 Western Pattern Ribbed Coal	Aluminum 13 ¹ / ₂ " x 14 ¹ / ₂ "	46" Fiberglass	Double-dip	4.00 lbs.
HIAGS2D	Size: 2 Western Pattern Ribbed Coal	Aluminum 13 ¹ / ₂ " x 14 ¹ / ₂ "	27" Fiberglass	D-grip	3.50 lbs.
HIAGS2MD	Size: 2 Western Pattern Ribbed Coal	Aluminum 13 ¹ / ₂ " x 14 ¹ / ₂ "	38" Fiberglass	D-grip	3.75 lbs.
HIAGS2L-W	Size: 2 Western Pattern Ribbed Coal	Aluminum 13 ¹ / ₂ " x 14 ¹ / ₂ "	47" Ash	None	3.50 lbs.
HIAGS2D-W	Size: 2 Western Pattern Ribbed Coal	Aluminum 13 ¹ / ₂ " x 14 ¹ / ₂ "	27" Ash	D-grip	3.00 lbs.
HIAGS2MD-W	Size: 2 Western Pattern Ribbed Coal	Aluminum 13 ¹ / ₂ " x 14 ¹ / ₂ "	39" Ash	D-grip	3.50 lbs.
HISGS8L	Size: 8 Western Pattern Grain Scoop	Steel 14" x 17"	44" Fiberglass	Double-dip	7.00 lbs.
HISGS8D	Size: 8 Western Pattern Grain Scoop	Steel 14" x 17"	27" Fiberglass	D-grip	6.50 lbs.
HISGS8MD	Size: 8 Western Pattern Grain Scoop	Steel 14" x 17"	38" Fiberglass	D-grip	7.00 lbs.
HISGS8L-W	Size: 8 Western Pattern Grain Scoop	Steel 14" x 17"	46" Ash	None	6.50 lbs.
HISGS8D-W	Size: 8 Western Pattern Grain Scoop	Steel 14" x 17"	26" Ash	D-grip	6.50 lbs.
HISGS8MD-W	Size: 8 Western Pattern Grain Scoop	Steel 14" x 17"	38" Ash	D-grip	7.00 lbs.

Order Toll Free
1-800-331-8410



HISCO's Grain Scoop Blades

are stamped from a single piece of steel or aluminum. These western pattern scoops have embossed ribs for added strength. Handles are attached with a single rivet and feature a reinforcing metal collar at the neck.

Model	Description	Blade	Handle	Grip	Nominal Wt.
HISGS10L	Size: 10 Western Pattern	Steel 14 ¹ / ₂ " x 18"	44" Fiberglass	Double-dip	7.50 lbs.
HISGS10D	Size: 10 Western Pattern	Steel 14 ¹ / ₂ " x 18"	27" Fiberglass	D-grip	7.25 lbs.
HISGS10MD	Size: 10 Western Pattern	Steel 14 ¹ / ₂ " x 18"	38" Fiberglass	D-grip	7.50 lbs.
HISGS10L-W	Size: 10 Western Pattern	Steel 14 ¹ / ₂ " x 18"	46" Ash	None	7.00 lbs.
HISGS10D-W	Size: 10 Western Pattern	Steel 14 ¹ / ₂ " x 18"	27" Ash	D-grip	7.00 lbs.
HISGS10MD-W	Size: 10 Western Pattern	Steel 14 ¹ / ₂ " x 18"	38" Ash	D-grip	7.25 lbs.
HIAGS10L	Size: 10 Western Pattern	Aluminum 14 ³ / ₄ " x 18"	44" Fiberglass	Double-dip	4.50 lbs.
HIAGS10D	Size: 10 Western Pattern	Aluminum 14 ³ / ₄ " x 18"	27" Fiberglass	D-grip	4.25 lbs.
HIAGS10MD	Size: 10 Western Pattern	Aluminum 14 ³ / ₄ " x 18"	38" Fiberglass	D-grip	4.25 lbs.

Order Toll Free
1-800-331-8410



Model	Description	Blade	Handle	Grip	Nominal Wt.
HIAGS10L-W	Size: 10 Western Pattern	Aluminum 14 ³ / ₄ " x 18"	47" Ash	None	3.75 lbs.
HIAGS10D-W	Size: 10 Western Pattern	Aluminum 14 ³ / ₄ " x 18"	27" Ash	D-grip	3.75 lbs.
HIAGS10MD-W	Size: 10 Western Pattern	Aluminum 14 ³ / ₄ " x 18"	38" Ash	D-grip	4.25 lbs.
HIAGS14L	Size: 14 Western Pattern	Aluminum 15 ³ / ₄ " x 20"	44" Fiberglass	Double-dip	4.50 lbs.
HIAGS14D	Size: 14 Western Pattern	Aluminum 15 ³ / ₄ " x 20"	27" Fiberglass	D-grip	4.25 lbs.
HIAGS14MD	Size: 14 Western Pattern	Aluminum 15 ³ / ₄ " x 20"	38" Fiberglass	D-grip	4.50 lbs.
HIAGS14L-W	Size: 14 Western Pattern	Aluminum 15 ³ / ₄ " x 20"	46" Ash	None	4.25 lbs.
HIAGS14D-W	Size: 14 Western Pattern	Aluminum 15 ³ / ₄ " x 20"	27" Ash	D-grip	4.00 lbs.
HIAGS14MD-W	Size: 14 Western Pattern	Aluminum 15 ³ / ₄ " x 20"	38" Ash	D-grip	4.50 lbs.

Specialty Scoop Blades These western pattern scoops with ribbed blades, are made of nonsparking Cycolac® plastic and are ideal as snow shovels and for use in grain operations. Handles are attached with a single rivet.

Our processing scoop (HIAGS10DG) is constructed using no wood and features an aluminum blade and solid fiberglass handle.



HIAGS10DG



HINSS12L



HINSS12D



HINSS12MD



HINSS12D-W



HINSS12L-W



HINSS12MD-W

Model	Description	Blade	Handle	Grip	Nominal Wt.
HIAGS10DG	Size: 10 Western Pattern	Aluminum 14 ³ / ₄ " x 18"	27" Solid Fiberglass	D-grip	4.00 lbs.
HINSS12L	Size: 12 Non-Sparking	Cyolac® Plastic 14 ¹ / ₂ " x 17 ³ / ₄ "	47" Fiberglass	Double-dip	5.00 lbs.
HINSS12D	Size: 12 Non-Sparking	Cyolac® Plastic 14 ¹ / ₂ " x 17 ³ / ₄ "	27" Fiberglass	D-grip	4.50 lbs.
HINSS12MD	Size: 12 Non-Sparking	Cyolac® Plastic 14 ¹ / ₂ " x 17 ³ / ₄ "	38" Fiberglass	D-grip	4.75 lbs.
HINSS12L-W	Size: 12 Non-Sparking	Cyolac® Plastic 14 ¹ / ₂ " x 17 ³ / ₄ "	46" Ash	None	4.50 lbs.
HINSS12D-W	Size: 12 Non-Sparking	Cyolac® Plastic 14 ¹ / ₂ " x 17 ³ / ₄ "	26" Ash	D-grip	4.00 lbs.
HINSS12MD-W	Size: 12 Non-Sparking	Cyolac® Plastic 14 ¹ / ₂ " x 17 ³ / ₄ "	40" Ash	D-grip	4.25 lbs.



Basic EZ Off Heel is reinforced with angle iron at fulcrum for increased wear and features a replaceable blade.

EZ Off Replaceable Heel has a bolt-on steel heel at fulcrum and a replaceable blade.

Model	Description	Blade	Handle	Grip	Nominal Wt.
HI42SSD-2	EZ Off Scraper/Puller	30°/ 9" Serrated/Replaceable	42" Fiberglass	D-grip	5.25 lbs.
HI42SSD-2R	EZ Off Scraper/Puller	30°/ 9" Repl. Blade/Repl. Heel	42" Fiberglass	D-grip	5.25 lbs.
HIRB-92	EZ Off Replacement Blade	Blade Only 9" Serrated			1.00 lbs.
HIHDS	Heavy Duty Scraper	Forged 9" x 7"	1 1/4" x 53" Fiberglass	D-grip	5.50 lbs.



Order Toll Free
1-800-331-8410

Model	Description	Blade	Handle	Grip	Nominal Wt.
HISF-4L	Four Tine Roofer's Fork	Forged Steel 7 ¹ / ₄ " x 10 ³ / ₄ " Tines	48" fiberglass	Double-dip	4.50 lbs.
HISF-4D	Four Tine Roofer's Fork	Forged Steel 7 ¹ / ₄ " x 10 ³ / ₄ " Tines	28" fiberglass	D-grip	4.25 lbs.
HISF-4MD	Four Tine Roofer's Fork	Forged Steel 7 ¹ / ₄ " x 10 ³ / ₄ " Tines	40" fiberglass	D-grip	5.00 lbs.
HISF4L-W	Four Tine Roofer's Fork	Forged Steel 7 ¹ / ₄ " x 10 ³ / ₄ " Tines	54" Ash, Gooseneck	None	4.50 lbs.
HISF4D-W	Four Tine Roofer's Fork	Forged Steel 7 ¹ / ₄ " x 10 ³ / ₄ " Tines	31" Ash, Gooseneck	D-grip	4.00 lbs.
HITMH-6	Tar Mop Handle	No Mop/Handle Only 1 ¹ / ₄ " dia.	72" fiberglass	Double-dip	3.50 lbs.
HITMH-8	Tar Mop Handle	No Mop/Handle Only 1 ¹ / ₄ " dia.	96" fiberglass	Double-dip	4.00 lbs.
HITMH-10	Tar Mop Handle	No Mop/Handle Only 1 ¹ / ₄ " dia.	120" fiberglass	Double-dip	4.50 lbs.

Build Your Own Tear-Off Spade

Tear-Off Spades are the most used tear-off tools in residential and commercial roofing. Depending on your specific application and preferences, HISCO has the handle and head combination to fit your needs. Now you can build your own tool. Locate the fiberglass or ash handle you prefer, by number; then add that number to the letter by the HISCO tear-off head that meets your requirements. The numeric/alpha identifier is listed on the corresponding index and will give you HISCO's product number of the tear-off spade you just built.

- Rolled back steps on our tear-off spades keep shingles from catching on blade during tear-off.

FIRST...

CHOOSE YOUR HANDLE PREFERENCE:

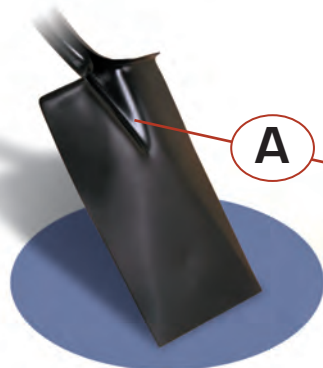
HISCO's quality handles feature a reinforcing metal collar at neck of blade and are attached with a steel rivet for added strength.

- | | |
|--|-------------------------|
| 1. 48" Fiberglass with Double-dip grip | 4. 48" Ash with no grip |
| 2. 28" Fiberglass with D-grip | 5. 28" Ash with D-grip |
| 3. 40" Fiberglass with D-grip | 6. 40" Ash with D-grip |



SECOND...

CHOOSE YOUR HEAD PREFERENCE:



A

Open Back Tear-Off Spade
This is our basic straight blade with open back.



C

Closed Back Tear-Off Spade
Our open back straight blade featured with the back welded closed with a steel plate.



E

Reinforced Back Tear-Off Spade
Features a 10" x 5" welded steel plate on back of blade for added head strength and durability.

Key	Model	Description	Blade/Head	Handle	Grip	Nominal Wt.
1A	HIGS2L	Size: 2 Tear-off Spade	Hollow Back 7" x 11"	48" Fiberglass	Double-dip	4.80 lbs.
2A	HIGS2D	Size: 2 Tear-off Spade	Hollow Back 7" x 11"	28" Fiberglass	D-grip	4.25 lbs.
3A	HIGS2MD	Size: 2 Tear-off Spade	Hollow Back 7" x 11"	40" Fiberglass	D-grip	4.50 lbs.
4A	HIGS2L-W	Size: 2 Tear-off Spade	Hollow Back 7" x 11"	48" Ash	None	4.50 lbs.
5A	HIGS2D-W	Size: 2 Tear-off Spade	Hollow Back 7" x 11"	28" Ash	D-grip	4.00 lbs.
6A	HIGS2MD-W	Size: 2 Tear-off Spade	Hollow Back 7" x 11"	40" Ash	D-grip	4.75 lbs.
1C	HIGS2L-CB	Size: 2 Tear-off Spade	Closed Back 7" x 11"	48" Fiberglass	Double-dip	4.90 lbs.
2C	HIGS2D-CB	Size: 2 Tear-off Spade	Closed Back 7" x 11"	28" Fiberglass	D-grip	4.35 lbs.
3C	HIGS2MD-CB	Size: 2 Tear-off Spade	Closed Back 7" x 11"	40" Fiberglass	D-grip	4.60 lbs.
4C	HIGS2LW-CB	Size: 2 Tear-off Spade	Closed Back 7" x 11"	48" Ash	None	4.60 lbs.
5C	HIGS2DW-CB	Size: 2 Tear-off Spade	Closed Back 7" x 11"	28" Ash	D-grip	4.10 lbs.
6C	HIGS2MDW-CB	Size: 2 Tear-off Spade	Closed Back 7" x 11"	40" Ash	D-grip	4.85 lbs.
1E	HIGS2RL	Size: 2 Straight Tear-Off Shovel	Reinforced 7" x 11"	48" Fiberglass	Double-dip	5.25 lbs.
2E	HIGS2RD	Size: 2 Straight Tear-Off Shovel	Reinforced 7" x 11"	28" Fiberglass	D-grip	5.50 lbs.
3E	HIGS2RMD	Size: 2 Straight Tear-Off Shovel	Reinforced 7" x 11"	40" Fiberglass	D-grip	5.75 lbs.
4E	HIGS2RL-W	Size: 2 Straight Tear-Off Shovel	Reinforced 7" x 11"	48" Ash	None	5.00 lbs.
5E	HIGS2RD-W	Size: 2 Straight Tear-Off Shovel	Reinforced 7" x 11"	28" Ash	D-grip	5.00 lbs.
6E	HIGS2RMD-W	Size: 2 Straight Tear-Off Shovel	Reinforced 7" x 11"	40" Ash	D-grip	5.50 lbs.

Build Your Own Tear-Off Spade

Tear-Off Spades are the most used tear-off tools in residential and commercial roofing. Depending on your specific application and preferences, HISCO has the handle and head combination to fit your needs. Now you can build your own tool. Locate the fiberglass or ash handle you prefer, by number; then add that number to the letter by the HISCO tear-off head that meets your requirements. The numeric/alpha identifier is listed on the corresponding index and will give you HISCO's product number of the tear-off spade you just built.

- Rolled back steps on our tear-off spades keep shingles from catching on blade during tear-off.
- Piranha blades feature a serrated point to aid in removal of nails and tacks.

FIRST...

CHOOSE YOUR HANDLE PREFERENCE:

HISCO's quality handles feature a reinforcing metal collar at neck of blade and are attached with a steel rivet for added strength.

- | | |
|--|-------------------------|
| 1. 48" Fiberglass with Double-dip grip | 4. 48" Ash with no grip |
| 2. 28" Fiberglass with D-grip | 5. 28" Ash with D-grip |
| 3. 40" Fiberglass with D-grip | 6. 40" Ash with D-grip |



SECOND...

CHOOSE YOUR HEAD PREFERENCE:



G

Angle Back Tear-Off Spade
Features straight blade and 10" x 5" steel fulcrum with 2 1/2" lift for maximum leverage. Bottom of fulcrum has welded angle iron plate for increased wear.



H

Angle Back Tear-Off Spade-Piranha Teeth
Features 10" x 5" steel fulcrum with 2 1/2" lift for maximum leverage and Piranha teeth for removal of nails and tacks. Bottom of fulcrum has welded angle iron plate for durability.



K

Closed Back Tear-Off with Wedge Fulcrum
Straight Blade Only. Features closed back with an 8" x 3" steel wedge with 1 3/4" lift. This is a tough tear-off spade primarily used in commercial roofing applications.

Key	Model	Description	Blade	Handle	Grip	Nominal Wt.
1G	HI14RSL	Angle Back Tear-Off Spade	Reinforced 30° Fulcrum 7" x 11"	48" Fiberglass	Double-dip	5.50 lbs.
2G	HI14RSD	Angle Back Tear-Off Spade	Reinforced 30° Fulcrum 7" x 11"	28" Fiberglass	D-grip	5.25 lbs.
3G	HI14RSMD	Angle Back Tear-Off Spade	Reinforced 30° Fulcrum 7" x 11"	40" Fiberglass	D-grip	6.50 lbs.
4G	HI14RSL-W	Angle Back Tear-Off Spade	Reinforced 30° Fulcrum 7" x 11"	48" Ash	None	5.50 lbs.
5G	HI14RSD-W	Angle Back Tear-Off Spade	Reinforced 30° Fulcrum 7" x 11"	28" Ash	D-grip	5.25 lbs.
6G	HI14RSMD-W	Angle Back Tear-Off Spade	Reinforced 30° Fulcrum 7" x 11"	40" Ash	D-grip	6.00 lbs.
1H	HIJAWS-2	Angle Back Tear-Off Piranha	Reinforced 30° Fulcrum 7" x 11"	48" Fiberglass	Double-dip	5.50 lbs.
2H	HIJAWS-1	Angle Back Tear-Off Piranha	Reinforced 30° Fulcrum 7" x 11"	28" Fiberglass	D-grip	5.25 lbs.
3H	HIJAWS-MD	Angle Back Tear-Off Piranha	Reinforced 30° Fulcrum 7" x 11"	40" Fiberglass	D-grip	6.50 lbs.
4H	HIJAWS2-W	Angle Back Tear-Off Piranha	Reinforced 30° Fulcrum 7" x 11"	48" Ash	None	5.50 lbs.
5H	HIJAWS1-W	Angle Back Tear-Off Piranha	Reinforced 30° Fulcrum 7" x 11"	28" Ash	D-grip	5.25 lbs.
6H	HIJAWSMD-W	Angle Back Tear-Off Piranha	Reinforced 30° Fulcrum 7" x 11"	40" Ash	D-grip	6.00 lbs.
1K	HI14RSL-CB	Tear-Off Spade Wedge	Closed Back Fulcrum 7" x 11"	48" Fiberglass	Double-dip	5.50 lbs.
2K	HI14RSD-CB	Tear-Off Spade Wedge	Closed Back Fulcrum 7" x 11"	28" Fiberglass	D-grip	5.25 lbs.
3K	HI14RSMD-CB	Tear-Off Spade Wedge	Closed Back Fulcrum 7" x 11"	40" Fiberglass	D-grip	6.50 lbs.
4K	HI14RSLW-CB	Tear-Off Spade Wedge	Closed Back Fulcrum 7" x 11"	48" Ash	None	5.50 lbs.
5K	HI14RSDW-CB	Tear-Off Spade Wedge	Closed Back Fulcrum 7" x 11"	28" Ash	D-grip	5.50 lbs.
6K	HI14RSMDW-CB	Tear-Off Spade Wedge	Closed Back Fulcrum 7" x 11"	40" Ash	D-grip	6.00 lbs.



Model	Description	Blade	Handle	Grip	Nominal Wt.
HI7IS	Floor/Ice Scraper	Welded Shank 7" x 6"	1 1/8" x 60" Fiberglass	Vinyl	3.50 lbs.
HI7IS-W	Floor/Ice Scraper	Welded Shank 7" x 6"	1 1/8" x 60" Wood	None	3.00 lbs.
HI9FIS	Floor/Ice Scraper	Forged 9" x 6 1/2"	1 1/8" x 60" Fiberglass	Vinyl	4.50 lbs.
HI9FIS-W	Floor/Ice Scraper	Forged 9" x 6 1/2"	1 1/8" x 60" Wood	None	4.00 lbs.
HIHDS	Heavy Duty Floor/Ice Scraper	Forged 9" x 7"	1 1/4" x 53" Fiberglass	D-grip	5.50 lbs.
HISB350	Spud Bar	Replacable 3 1/2" x 4"	1" x 54" Solid Fiberglass	Vinyl	6.25 lbs.
HISB350S	Spud Bar	Replacable 3 1/2" x 4"	1" x 54" Steel Pipe	Steel Ball	6.50 lbs.
HIRB350	Spud Bar Replacement Blade	Blade Only 3 1/2" x 4"			0.25 lbs.
HISB700	Spud Bar	Replacable 7" x 4"	1" x 54" Solid Fiberglass	Vinyl	6.50 lbs.
HISB700S	Spud Bar	Replacable 7" x 4"	1" x 54" Steel Pipe	Steel Ball	7.00 lbs.
HIRB700	Spud Bar Replacement Blade	Blade Only 7" x 4"			0.50 lbs.
HI57APB	All Purpose Bar	Forged Wedge 2" x 9"	1" x 48" Solid Fiberglass	Vinyl	7.50 lbs.
HI57APBS	All Purpose Bar	Forged Wedge 2" x 9"	1 1/4" x 48" Steel Pipe	Double-dip	8.00 lbs.
HI57APBT	All Purpose Bar w/Tamper	Forged Wedge 2" x 9"	1" x 48" Solid Fiberglass	2 1/2" Tamper	7.50 lbs.
HI57APBTS	All Purpose Bar w/Tamper	Forged Wedge 2" x 9"	1 1/4" x 48" Steel Pipe	2 1/2" Tamper	9.50 lbs.



Model	Description	Blade	Handle	Grip	Nominal Wt.
HISF-4L	Four Tine Spading Fork	Forged Steel 7 ¹ / ₄ " x 10 ³ / ₄ " Tines	48" Fiberglass	Double-dip	4.50 lbs.
HISF-4D	Four Tine Spading Fork	Forged Steel 7 ¹ / ₄ " x 10 ³ / ₄ " Tines	28" Fiberglass	D-grip	4.25 lbs.
HISF-4MD	Four Tine Spading Fork	Forged Steel 7 ¹ / ₄ " x 10 ³ / ₄ " Tines	40" Fiberglass	D-grip	5.00 lbs.
HISF4L-W	Four Tine Spading Fork	Forged Steel 7 ¹ / ₄ " x 10 ³ / ₄ " Tines	54" Ash, Gooseneck	None	4.50 lbs.
HISF4D-W	Four Tine Spading Fork	Forged Steel 7 ¹ / ₄ " x 10 ³ / ₄ " Tines	31" Ash, Gooseneck	D-grip	4.00 lbs.
HIMF5L	Five Tine Manure Fork	Forged Steel 9" x 12 ¹ / ₂ " Oval Tines	46" Fiberglass	Double-dip	5.00 lbs.
HIMF5D	Five Tine Manure Fork	Forged Steel 9" x 12 ¹ / ₂ " Oval Tines	26" Fiberglass	D-grip	4.00 lbs.
HIMF5L-W	Five Tine Manure Fork	Forged Steel 9" x 12 ¹ / ₂ " Oval Tines	54" Ash, Gooseneck	None	4.25 lbs.
HIMF5D-W	Five Tine Manure Fork	Forged Steel 9" x 12 ¹ / ₂ " Oval Tines	31" Ash, Gooseneck	D-grip	3.75 lbs.

3 Inch Trench & Clean Out Shovels



Our Patented TACO Tool™ (U.S. Patent No. D484,012 S) is a Trench And Clean Out shovel that revolutionizes trench tool design. Now the HISCO TACO Tool™ is offered in two styles. The original TACO Tool™ is made of heavy 12 gauge steel for more demanding digging and clean-out applications and has a 40 degree handle angle to the blade. The new TACO Lite™ features the same design as the original TACO Tool™ but is made of 15 gauge heat-treated steel to reduce head weight and has a 35 degree handle angle to the blade.

Features Include:

- vertical sides for greater material retention on blade when digging and cleaning trenches
- new handle angle that is ideal for both digging and clean-out
- improved heel for added strength and secure foot placement
- closed back to help eliminate material build up
- flat bottom for clean cuts and complete trench clean-out



The TACO Lite™ Tool is the latest addition to HISCO's complete line-up of quality trench digging and clean-out tools.

Order Toll Free
1-800-331-8410



Model	Description	Blade	Handle	Grip	Nominal Wt.
HIST3-4	3" Step Trench Shovel	Steel, Forward Step 3" x 11"	47" Fiberglass	Double-dip	4.00 lbs.
HIST3-4W	3" Step Trench Shovel	Steel, Forward Step 3" x 11"	46" Ash	None	3.00 lbs.
HITACO3-4	3" Original TACO Tool	Steel, Boxed Step 3" x 11 1/2"	47" Fiberglass	Double-dip	5.00 lbs.
HITACO3-4W	3" Original TACO Tool	Steel, Boxed Step 3" x 11 1/2"	47" Ash	None	4.00 lbs.
HITACOL3-4	3" TACO Lite Tool	Steel, Boxed Step 2 3/4" x 11 1/2" ‡	50" Fiberglass	Double-dip	4.30 lbs.
HITACOL3-6	3" TACO Lite Tool	Steel, Boxed Step 2 3/4" x 11 1/2" ‡	72" Fiberglass	Double-dip	6.20 lbs.
HITACOL3-8	3" TACO Lite Tool	Steel, Boxed Step 2 3/4" x 11 1/2" ‡	96" Fiberglass	Double-dip	6.75 lbs.
HITACOL3-4W	3" TACO Lite Tool	Steel, Boxed Step 2 3/4" x 11 1/2" ‡	46" Ash	None	3.30 lbs.
HI603TCOS	3" Trench Clean-Out (only) Shovel	Steel 3" x 10"	60" Fiberglass	Vinyl	3.75 lbs.

‡ Blade Imported to HISCO Specifications

TACO Tool Patent No. US D484,012 S



See Our New
ProGold Series
Trench Shovels on page 3.



HITS481L
HITS721L



HITS481L-W



HITS481D



HIST4-4



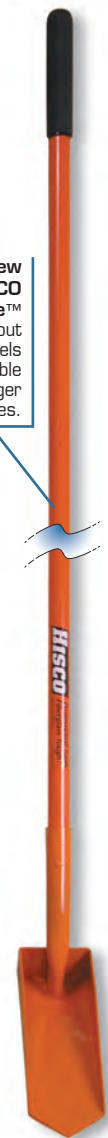
HIST4-4W



HITACOL4-4



HITACOL4-4W



HITACOL4-6
HITACOL4-8



HI604TCOS

New
TACO Lite™
clean-out
shovels
available
with longer
handles.

Clean-
Out
Only
shovel.
Not de-
signed for
digging.

Model	Description	Blade	Handle	Grip	Nominal Wt.
HITS481L	4" Classic Trench Shovel	Hollow Back 4" x 12"	48" Fiberglass	Double-dip	3.50 lbs.
HITS721L	4" Classic Trench Shovel	Hollow Back 4" x 12"	72" Fiberglass	Double-dip	4.50 lbs.
HITS481L-W	4" Classic Trench Shovel	Hollow Back 4" x 12"	48" Ash	None	3.00 lbs.
HITS481D	4" Mini Trench Shovel	Hollow Back 4" x 12"	21" Fiberglass	D-grip	2.50 lbs.
HIST4-4	4" Step Trench Shovel	Steel, Forward Step 4" x 11"	50" Fiberglass	Double-dip	4.25 lbs.
HIST4-4W	4" Step Trench Shovel	Steel, Forward Step 4" x 11"	46" Ash	None	3.00 lbs.
HITACOL4-4	4" TACO Lite Tool	Steel, Boxed Step 3 ³ / ₄ " x 11 ¹ / ₂ "	50" Fiberglass	Double-dip	4.65 lbs.
HITACOL4-4W	4" TACO Lite Tool	Steel, Boxed Step 3 ³ / ₄ " x 11 ¹ / ₂ "	47" Ash	None	3.65 lbs.
HITACOL4-6	4" TACO Lite Tool	Steel, Boxed Step 3 ³ / ₄ " x 11 ¹ / ₂ "	72" Fiberglass	Double-dip	6.50 lbs.
HITACOL4-8	4" TACO Lite Tool	Steel, Boxed Step 3 ³ / ₄ " x 11 ¹ / ₂ "	96" Fiberglass	Double-dip	7.00 lbs.
HI604TCOS	4" Trench Clean-Out (only) Shovel	Steel 4" x 10"	60" Fiberglass	Vinyl	3.75 lbs.

TACO Tool Patent No. US D484,012 S

See Our New ProGold Series

Trench Shovels on page 3.

Order Toll Free **1-800-331-8410**



HIST5-4



HIST5-4W



HIST6-4



HIST6-4W



HITS483LCD



HITS483LCD-W

**Six Inch
Trench
Shovel**
Cut down
from our
round point
blade with
welded for-
ward steps.

Model	Description	Blade	Handle	Grip	Nominal Wt.
HIST5-4	5" Step Trench Shovel	Steel, Forward Step 5" x 11"	50" Fiberglass	Double-dip	5.00 lbs.
HIST5-4W	5" Step Trench Shovel	Steel, Forward Step 5" x 11"	46" Ash	None	3.50 lbs.
HIST6-4	6" Step Trench Shovel	Steel, Forward Step 6" x 11"	50" Fiberglass	Double-dip	5.25 lbs.
HIST6-4W	6" Step Trench Shovel	Steel, Forward Step 6" x 11"	46" Ash	None	3.50 lbs.
HITS483LCD	6" Trench Shovel	Hollow Back 6" x 11 ³ / ₄ "	48" Fiberglass	Double-dip	4.75 lbs.
HITS483LCD-W	6" Trench Shovel	Hollow Back 6" x 11 ³ / ₄ "	48" Ash	None	4.25 lbs.

NEW



Model	Description	Blade	Handle	Grip	Nominal Wt.
HI8848ST	Heavy Duty Tamper w/Gussets	Steel Plate 8" x 8" x 1/2"	48" Fiberglass	Double-dip	11.75 lbs.
HI8848ST-S	Heavy Duty Tamper w/Gussets	Steel Plate 8" x 8" x 1/2"	48" Schd, 40 Pipe	Double-dip	15.60 lbs.
HI1048ST	Heavy Duty Tamper w/Gussets	Steel Plate 10" x 10" x 1/2"	48" Fiberglass	Double-dip	16.25 lbs.
HI1048ST-S	Heavy Duty Tamper w/Gussets	Steel Plate 10" x 10" x 1/2"	48" Schd, 40 Pipe	Double-dip	20.50 lbs.
HIPRY33	Double End Pry Bar w/tapered steel ends	Drop forged and hardened steel	Solid Fiberglass	None	5.10 lbs.
HIPRY38	Double End Pry Bar w/tapered steel ends	Drop forged and hardened steel	Solid Fiberglass	None	5.60 lbs.
HIPRY44	Double End Pry Bar w/tapered steel ends	Drop forged and hardened steel	Solid Fiberglass	None	6.10 lbs.
HIPRY50.5	Double End Pry Bar w/tapered steel ends	Drop forged and hardened steel	Solid Fiberglass	None	6.70 lbs.
HISPRY44	Single End Pry Bar w/tapered steel ends	Drop forged and hardened steel	Solid Fiberglass	None	5.10 lbs.
HISPRY49	Single End Pry Bar w/tapered steel ends	Drop forged and hardened steel	Solid Fiberglass	None	5.70 lbs.
HISPRY41C	Single End Pry Bar w/tapered steel ends	Drop forged and hardened steel	Solid Fiberglass	None	5.10 lbs.
HISPRY46C	Single End Pry Bar w/tapered steel ends	Drop forged and hardened steel	Solid Fiberglass	None	5.70 lbs.



HIPHD4



HIPHD4-W



HIPHD6



HIPHD8
HIPHD10



HIDB12



HIDB16

Model	Description	Blade	Handle	Grip	Nominal Wt.
HIPHD4	Post Hole Digger	Head 9 1/2" x 6 1/2" w/6 1/4" spread	48" Fiberglass	Double-dip	10.00 lbs.
HIPHD4-W	Post Hole Digger	Head 9 1/2" x 6 1/2" w/6 1/4" spread	44" Ash	None	9.50 lbs.
HIPHD6	Post Hole Digger	Head 9 1/2" x 6 1/2" w/6 1/4" spread	72" Fiberglass	Double-dip	12.00 lbs.
HIPHD8	Post Hole Digger	Head 9 1/2" x 6 1/2" w/6 1/4" spread	96" Fiberglass	Double-dip	14.00 lbs.
HIPHD10	Post Hole Digger	Head 9 1/2" x 6 1/2" w/6 1/4" spread	120" Fiberglass	Double-dip	16.00 lbs.
HIDB12	Ditch Bank Tool	12" Ditch-Bank Blade	36" Hickory	None	4.00 lbs.
HIDB16	Heavy-Duty Ditch Bank Tool	16" Ditch-Bank Blade	40" Hickory	None	5.50 lbs.

HISCO's Lawn and leaf rakes meet the rigorous demands of professional landscapers and gardeners.

Order Toll Free
1-800-331-8410



HI2254LR



HI2254LR-W



HI24PLR



HI24PLR-W

Model	Description	Blade	Handle	Grip	Nominal Wt.
HI2254LR	Deluxe 22 Tine Lawn Rake	Spring Brace 22" Head	54" Fiberglass	Vinyl	2.75 lbs.
HI2254LR-W	Deluxe 22 Tine Lawn Rake	Spring Brace 22" Head	54" Wood	None	2.50 lbs.
HI24PLR	24" Poly Leaf Rake Rake	24" Molded Poly Head	54" Fiberglass	Vinyl	2.00 lbs.
HI24PLR-W	24" Poly Leaf Rake Rake	24" Molded Poly Head	54" Wood	None	1.75 lbs.

HISCO's Landscape Rakes:

- aluminum alloy heads designed to professional landscapers' specifications
- extended striking edge engineered specifically for grading
- durable powder-coated aluminum handles with vinyl grips
- strong wrap around bracing for long-lasting performance
- rounded teeth for smooth non-gouging raking action



Order Toll Free
1-800-331-8410

Model	Description	Blade	Handle	Grip	Nominal Wt.
HICR-72	Forged Head Culvert Rake	6" Steel Head, 4 Curved Tines	72" Fiberglass	Vinyl	3.75 lbs.
HICR-96	Forged Head Culvert Rake	6" Steel Head, 4 Curved Tines	96" Fiberglass	Vinyl	4.00 lbs.
HIMR-60	Forged Head Manure Rake	8 1/2" x 10" Head, 4 Curved Tines	60" Fiberglass	Vinyl	4.00 lbs.
HIMR-72	Forged Head Manure Rake	8 1/2" x 10" Head, 4 Curved Tines	72" Fiberglass	Vinyl	4.25 lbs.
HIMR-96	Forged Head Manure Rake	8 1/2" x 10" Head, 4 Curved Tines	96" Fiberglass	Vinyl	4.50 lbs.
HI2466LSR	24 Tine Field & Landscape Rake	24" x 3" Aluminum Alloy	66" Aluminum	Vinyl	3.25 lbs.
HI3666LSR	36 Tine Field & Landscape Rake	36" x 3" Aluminum Alloy	66" Aluminum	Vinyl	3.75 lbs.
HI3682LW	24 Tooth Light Lute	36" x 3" Aluminum Alloy	82" Aluminum	Vinyl	4.50 lbs.

Order Toll Free
1-800-331-8410



Model	Description	Blade	Handle	Grip	Nominal Wt.
HIBR16T	Forged Head 16 Tine Bow Rake	16 ³ / ₄ " x 3" Curved Steel Tines	60" Fiberglass	Vinyl	4.00 lbs.
HIBR16T-W	Forged Head 16 Tine Bow Rake	16 ³ / ₄ " x 3" Curved Steel Tines	60" Ash	None	3.75 lbs.
HIRR16T	Forged Level Head Rock Rake	16 ³ / ₄ " x 3" Straight Steel Tines	66" Fiberglass	Double-dip	4.25 lbs.
HIRR16T-W	Forged Level Head Rock Rake	16 ³ / ₄ " x 3" Straight Steel Tines	60" Ash	None	4.00 lbs.
HIAR14T	Forged Head 14 Tine Asphalt Rake	18" x 3" Head, 24" Steel Shank	60" Fiberglass	Double-dip	5.75 lbs.
HIAR14T-W	Forged Head 14 Tine Asphalt Rake	18" x 3" Head, 24" Steel Shank	60" Ash	None	5.25 lbs.

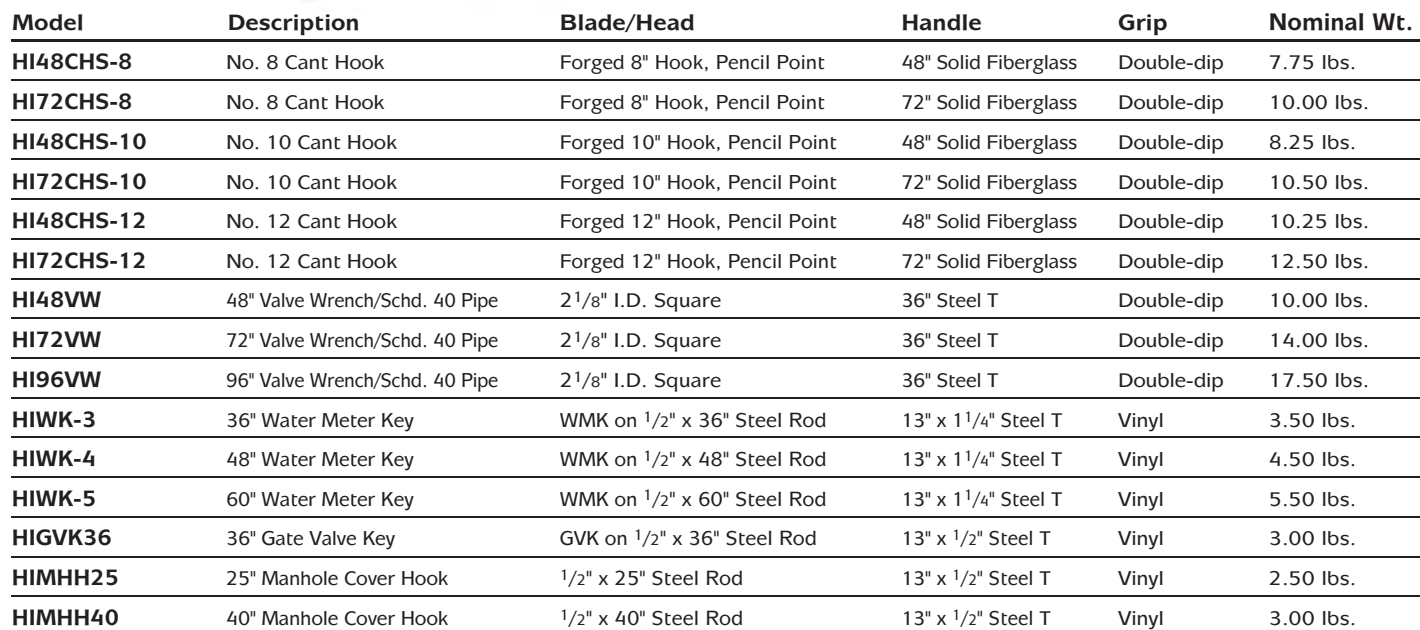
Order Toll Free
1-800-331-8410



Model	Description	Blade	Handle	Grip	Nominal Wt.
HIMCT	McLeod Fire & Trail Tool	10 1/4" x 9" w/6 Tines 3 1/2"	48" Fiberglass	Double Dip	5.00 lbs.
HIMCT-W	McLeod Fire & Trail Tool	10 1/4" x 9" w/6 Tines 3 1/2"	48" Ash	None	5.00 lbs.
HICH75	All Purpose/Cotton Hoe	Forged Steel 6" x 5"	60" Fiberglass	Vinyl	3.50 lbs.
HICH75-W	All Purpose/Cotton Hoe	Forged Steel 6" x 5"	60" Ash	None	2.50 lbs.
HIMHM7	Mini Mortar Hoe	Forged Steel 7" x 4 1/4"	18" Fiberglass	Vinyl	1.90 lbs.
HIMH9	Mortar Hoe	Forged Steel 9" x 6"	60" Fiberglass	Vinyl	4.00 lbs.
HIMH9-W	Mortar Hoe	Forged Steel 9" x 6"	60" Ash	None	3.50 lbs.



Model	Description	Blade	Handle	Grip	Nominal Wt.
HIBF16	Straight Edge Backfill Lute	16" x 6 ³ / ₄ " 14 Gauge Steel	60" Fiberglass	Vinyl	5.00 lbs.
HIBF20	Straight Edge Backfill Lute	20" x 6 ³ / ₄ " 14 Gauge Steel	60" Fiberglass	Vinyl	4.75 lbs.
HI2060ACC	Asphalt & Backfill Lute	20" x 4 ¹ / ₂ " 13 Gauge Steel	60" Fiberglass	Vinyl	5.50 lbs.
HICP	Concrete Placer/Pusher	20" x 4 ¹ / ₄ " 16 Gauge Steel	60" Fiberglass	Vinyl	4.00 lbs.
HICP-W	Concrete Placer/Pusher	20" x 4 ¹ / ₄ " 16 Gauge Steel	60" Wood	None	3.25 lbs.
HICPH	Concrete Placer w/Hook	20" x 4 ¹ / ₄ " 16 Gauge Steel	60" Fiberglass	Vinyl	4.00 lbs.
HICPH-W	Concrete Placer w/Hook	20" x 4 ¹ / ₄ " 16 Gauge Steel	60" Wood	None	3.25 lbs.



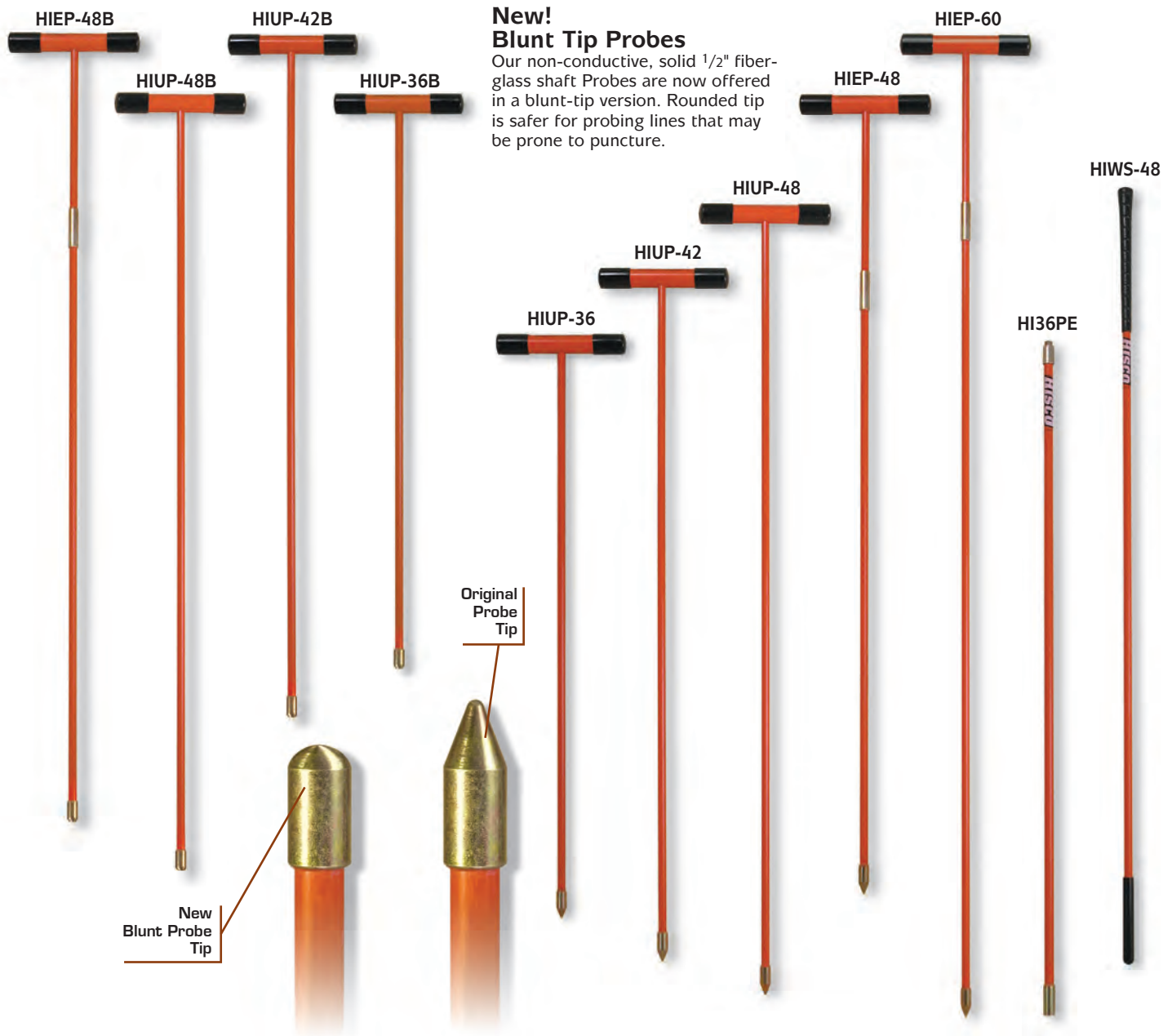


Model	Description	Blade/Head	Handle	Grip	Nominal Wt.
HICT-8	Curved Tamping Bar	Solid Steel 7" x 3" x 2"	96" Fiberglass	Double-dip	13.50 lbs.
HICT-10	Curved Tamping Bar	Solid Steel 7" x 3" x 2"	120" Fiberglass	Double-dip	14.25 lbs.
HIRT-8	Rectangular Tamping Bar	Solid Steel 4" x 2" x 3"	96" Fiberglass	Double-dip	12.00 lbs.
HIRT-10	Rectangular Tamping Bar	Solid Steel 4" x 2" x 3"	120" Fiberglass	Double-dip	12.75 lbs.
HITSEP-8	Eastern Pattern Telegraph Spoon	Three Star 8 ³ / ₄ " x 10"	96" Fiberglass	Double-dip	9.50 lbs.
HITSEP-10	Eastern Pattern Telegraph Spoon	Three Star 8 ³ / ₄ " x 10"	120" Fiberglass	Double-dip	10.25 lbs.
HITSEP-12	Eastern Pattern Telegraph Spoon	Three Star 8 ³ / ₄ " x 10"	144" Fiberglass	Double-dip	11.25 lbs.
HITSWP-8	Western Pattern Telegraph Spoon	Three Star 9 ⁵ / ₈ " x 8 ³ / ₄ "	96" Fiberglass	Double-dip	9.50 lbs.
HITSWP-10	Western Pattern Telegraph Spoon	Three Star 9 ⁵ / ₈ " x 8 ³ / ₄ "	120" Fiberglass	Double-dip	10.25 lbs.
HITSWP-12	Western Pattern Telegraph Spoon	Three Star 9 ⁵ / ₈ " x 8 ³ / ₄ "	144" Fiberglass	Double-dip	11.25 lbs.
HITS-8	Straight Telegraph Shovel	Three Star 9 ¹ / ₄ " x 11 ⁷ / ₈ "	96" Fiberglass	Double-dip	9.50 lbs.
HITS-10	Straight Telegraph Shovel	Three Star 9 ¹ / ₄ " x 11 ⁷ / ₈ "	120" Fiberglass	Double-dip	10.25 lbs.
HITS-12	Straight Telegraph Shovel	Three Star 9 ¹ / ₄ " x 11 ⁷ / ₈ "	144" Fiberglass	Double-dip	11.25 lbs.



Undertaker™ Cable Placer
Hard nylon cable guide tip is attached to our non-conductive, solid 1/2" fiber-glass shaft and topped off with an 8 1/4" "T" handle with vinyl grips. Easily places cable at the bottom of the trench.

Model	Description	Blade	Handle	Grip	Nominal Wt.
HICAT-4	Cable Trencher	8" x 12" x 1/4" Tapered to 4" Tip	48" Solid Fiberglass	Double-dip	10.50 lbs.
HICAT-T	Cable Trencher "T" Handle	8" x 12" x 1/4"	34" Solid Fiberglass	13" T, Vinyl	12.00 lbs.
HICAT-4V	Cable Trencher	9" x 12" x 1/4"	48" Solid Fiberglass	Double-dip	12.00 lbs.
HICAT-T44	Cable Trencher "T" Handle	9" x 12" x 1/4" (44" total length)	31" Solid Fiberglass	18" T, Dbl.-dip	12.00 lbs.
HICAT-T44H	Heavy-Duty Cable Trencher	9" x 12" x 3/8" (44" total length)	31" Solid Fiberglass	18" T, Dbl.-dip	12.00 lbs.
HICAT-T48	Cable Trencher "T" Handle	9" x 12" x 1/4" (48" total length)	35" Solid Fiberglass	18" T, Dbl.-dip	12.00 lbs.
HICAT-T48H	Heavy-Duty Cable Trencher	9" x 12" x 3/8" (48" total length)	35" Solid Fiberglass	18" T, Dbl.-dip	12.00 lbs.
HIUT-36	36" Undertaker™ Cable Placer	1/2" Nylon Guide on 1/2" Fiberglass Rod	8 1/4" Fiberglass T	Vinyl	0.90 lbs.
HIUT-48	48" Undertaker™ Cable Placer	1/2" Nylon Guide on 1/2" Fiberglass Rod	8 1/4" Fiberglass T	Vinyl	1.00 lbs.
HIUT2-36	36" Undertaker™ Cable Placer	3/4" Nylon Guide on 1/2" Fiberglass Rod	8 1/4" Fiberglass T	Vinyl	1.00 lbs.
HIUT2-48	48" Undertaker™ Cable Placer	3/4" Nylon Guide on 1/2" Fiberglass Rod	8 1/4" Fiberglass T	Vinyl	1.25 lbs.
HIEUT-48	48" Extendible Undertaker™	1/2" Nylon Guide on 1/2" Fiberglass Rod	8 1/4" Fiberglass T	Vinyl	1.25 lbs.
HIEUT2-48	48" Extendible Undertaker™	3/4" Nylon Guide on 1/2" Fiberglass Rod	8 1/4" Fiberglass T	Vinyl	1.50 lbs.



Model	Description	Blade	Handle	Grip	Nominal Wt.
HIUP-36	36" Utility Probe	3/4" Steel Tip on 1/2" Fiberglass Rod	8 1/4" Fiberglass T	Vinyl	1.25 lbs.
HIUP-42	42" Utility Probe	3/4" Steel Tip on 1/2" Fiberglass Rod	8 1/4" Fiberglass T	Vinyl	1.50 lbs.
HIUP-48	48" Utility Probe	3/4" Steel Tip on 1/2" Fiberglass Rod	8 1/4" Fiberglass T	Vinyl	1.50 lbs.
HIEP-48	48" Extendible Utility Probe	3/4" Steel Tip on 1/2" Fiberglass Rod	8 1/4" Fiberglass T	Vinyl	1.50 lbs.
HIUP-36B	36" Blunt-Tip Utility Probe	3/4" Steel Tip on 1/2" Fiberglass Rod	8 1/4" Fiberglass T	Vinyl	1.25 lbs.
HIUP-42B	42" Blunt-Tip Utility Probe	3/4" Steel Tip on 1/2" Fiberglass Rod	8 1/4" Fiberglass T	Vinyl	1.50 lbs.
HIUP-48B	48" Blunt-Tip Utility Probe	3/4" Steel Tip on 1/2" Fiberglass Rod	8 1/4" Fiberglass T	Vinyl	1.50 lbs.
HIEP-48B	48" Ext. Blunt-Tip Probe	3/4" Steel Tip on 1/2" Fiberglass Rod	8 1/4" Fiberglass T	Vinyl	1.50 lbs.
HIEP-60	60" Extendible Utility Probe	3/4" Steel Tip on 1/2" Fiberglass Rod	8 1/4" Fiberglass T	Vinyl	1.75 lbs.
HI36PE	36" Probe Extension	3/4" Connectors on 1/2" Fiberglass Rod			1.00 lbs.
HIWS-48	48" Walking Stick/Cattle Prod	Rubber Tip on 1/2" Fiberglass Rod	48" Fiberglass	Golf Grip	1.00 lbs.

Split Resistant Handles
on our HISCO axes, picks and mattocks feature a fiberglass core in a tough molded high-density polypropylene handle. This shock absorbing construction is more user friendly. We also now offer the traditional style Hickory handles on our new Renegade line.



Model	Description	Blade/Head	Handle	Grip	Nominal Wt.
HISBA-6	Single Bit Axe	3 1/2 lb. Single Bit Head	36" Fiberglass	None	6.50 lbs.
HISBA-6W	Single Bit Axe	3 1/2 lb. Single Bit Head	36" Hickory	None	5.00 lbs.
HIDBA-6	Double Bit Axe	3 1/2 lb. Double Bit Head	36" Fiberglass	None	6.50 lbs.
HIDBA-6W	Double Bit Axe	3 1/2 lb. Double Bit Head	36" Hickory	None	5.00 lbs.
HIPA-6	Firefighter's Pulaski Axe	3 1/2 lb. Pulaski Head	36" Fiberglass	None	5.00 lbs.
HIPA-6W	Firefighter's Pulaski Axe	3 1/2 lb. Pulaski Head	36" Hickory	None	5.00 lbs.
HIRP-5H	Railroad Clay Pick	5 lb. Head w/ #6 Eye	36" Fiberglass	None	7.50 lbs.
HIRP-5HW	Railroad Clay Pick	5 lb. Head w/ #6 Eye	36" Hickory	None	7.00 lbs.
HIRP-5	Railroad Clay Pick Head	5 lb. Head w/ #6 Eye	None	None	5.00 lbs.
HIPM-5H	Pick Mattock	5 lb. Head w/ #6 Eye	36" Fiberglass	None	7.50 lbs.
HIPM-5HW	Pick Mattock	5 lb. Head w/ #6 Eye	36" Hickory	None	7.50 lbs.
HIPM-5	Pick Mattock Head	5 lb. Head w/ #6 Eye	None	None	5.00 lbs.
HICM-5H	Cutter Mattock	5 lb. Head w/ #6 Eye	36" Fiberglass	None	7.50 lbs.
HICM-5HW	Cutter Mattock	5 lb. Head w/ #6 Eye	36" Hickory	None	7.50 lbs.
HICM-5	Cutter Mattock Head	5 lb. Head w/ #6 Eye	None	None	5.00 lbs.



Each sledge handle is spiral ground by hand to ensure maximum epoxy adhesion.

Some sledges available with wood handles.

Please contact customer service for availability.



HIBC-3



HIDH-2
HIDH-210
HIDH-3
HIDH-310
HIDH-4
HIDH-410



HIEH-3
HIEH-4
HIBD-422
HIBD-615
HIBD-622
HIBD-815
HIBD-822



HIBD-6
HIBD-8
HIBD-10
HIBD-12
HIBD-16
HIBD-20

Model	Description	Blade/Head	Handle	Grip	Nominal Wt.
HIBC-3	Cross Pien Hammer	3 lb. Cross Pien Head	14" Fiberglass	None	3.50 lbs.
HIDH-2	Drilling Hammer	2 lb. Double-faced Head	14" Fiberglass	None	2.50 lbs.
HIDH-210	Drilling Hammer	2 lb. Double-faced Head	10" Fiberglass	None	2.50 lbs.
HIDH-3	Drilling Hammer	3 lb. Double-faced Head	14" Fiberglass	None	3.50 lbs.
HIDH-310	Drilling Hammer	3 lb. Double-faced Head	10" Fiberglass	None	3.50 lbs.
HIDH-4	Engineer Hammer	4 lb. Double-faced Head	14" Fiberglass	None	4.50 lbs.
HIDH-410	Drilling Hammer	4 lb. Double-faced Head	10" Fiberglass	None	4.50 lbs.
HIEH-3	Engineer Hammer	3 lb. Double-faced Head	14" Fiberglass	None	3.50 lbs.
HIEH-4	Sledge Hammer	4 lb. Double-faced Head	14" Fiberglass	None	4.50 lbs.
HIBD-422	Sledge Hammer	4 lb. Double-faced Head	22" Fiberglass	None	4.50 lbs.
HIBD-6	Sledge Hammer	6 lb. Double-faced Head	36" Fiberglass	None	8.00 lbs.
HIBD-615	Sledge Hammer	6 lb. Double-faced Head	15" Fiberglass	None	6.50 lbs.
HIBD-622	Sledge Hammer	6 lb. Double-faced Head	22" Fiberglass	None	6.60 lbs.
HIBD-8	Sledge Hammer	8 lb. Double-faced Head	36" Fiberglass	None	10.00 lbs.
HIBD-815	Sledge Hammer	8 lb. Double-faced Head	15" Fiberglass	None	8.50 lbs.
HIBD-822	Sledge Hammer	8 lb. Double-faced Head	22" Fiberglass	None	8.60 lbs.
HIBD-10	Sledge Hammer	10 lb. Double-faced Head	36" Fiberglass	None	12.00 lbs.
HIBD-12	Sledge Hammer	12 lb. Double-faced Head	36" Fiberglass	None	14.00 lbs.
HIBD-16	Sledge Hammer	16 lb. Double-faced Head	36" Fiberglass	None	18.00 lbs.
HIBD-20	Sledge Hammer	20 lb. Double-faced Head	36" Fiberglass	None	22.00 lbs.

Our new 16" Street Broom features wide flared ends that allow for close sweeping to curbs. Recommended for wet or dry sweeping in dairy barns, for street sweeping and highway work.

Order Toll Free
1-800-331-8410



Model	Description	Head/Bristles/Blade	Handle	Grip	Nominal Wt.
HI16SBCW	16" Street Push Broom	Wood/ 6" Natural Palmyra Stalk	60" Wood	None	4.30 lbs.
HI24GFC	24" Garage Floor Push Broom	Wood/ 4" Natural Brown Palmyra	Braced 60" Fiberglass	Vinyl	3.50 lbs.
HI24GFCW	24" Garage Floor Push Broom	Wood/ 4" Natural Brown Palmyra	Braced 60" Wood	None	3.50 lbs.
HI24FBC	24" Floor Push Broom	Wood/ 3" Black Tampico	Braced 60" Fiberglass	Vinyl	3.50 lbs.
HI24FBCW	24" Floor Push Broom	Wood/ 3" Black Tampico	Braced 60" Wood	None	3.50 lbs.
HI24SBC	24" Street Push Broom	Wood/ 4" Polypalm Plastic	Braced 60" Fiberglass	Vinyl	3.50 lbs.
HI24SBCW	24" Street Push Broom	Wood/ 4" Polypalm Plastic	Braced 60" Wood	None	3.50 lbs.
HI24DSC	24" Driveway Squeegee	Aluminum/ 2" x 1/4" Rubber Blade	60" Fiberglass	Vinyl	3.50 lbs.
HI24DSCW	24" Driveway Squeegee	Aluminum/ 2" x 1/4" Rubber Blade	60" Wood	None	3.50 lbs.
HI24CS	24" Curved Squeegee	Aluminum/ 2" x 1/4" Rubber Blade	60" Fiberglass	Vinyl	3.50 lbs.
HI24CSW	24" Curved Squeegee	Aluminum/ 2" x 1/4" Rubber Blade	60" Wood	None	3.50 lbs.

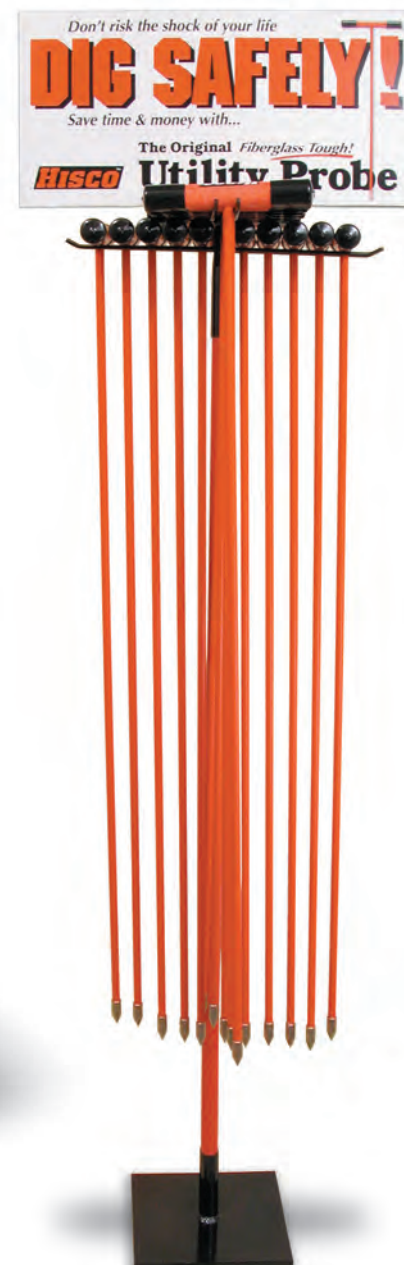
HISCO's Merchandising Displays are designed to maximize the visibility of our products in-store while occupying only the minimum amount of floor space. Each is an effective tool to increase sales potential.



HISD16



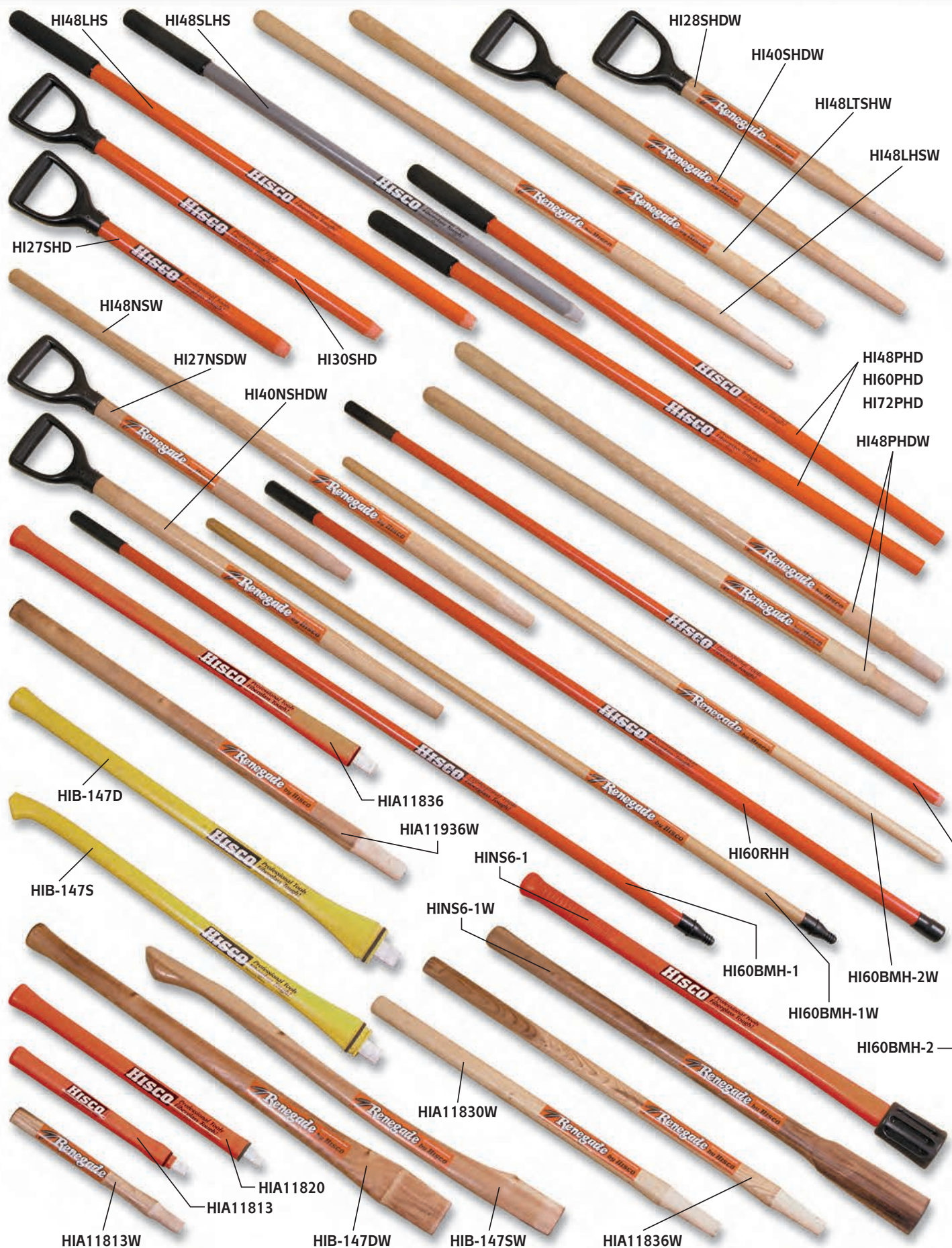
HICD100L



HIUP4824

Model	Description	Specs	Capacity	Nominal Wt.
HISD16	Tool Display Rack <i>(only)</i>	Tubular Steel 63" Tall x 32" Wide	16 Long Handle or D-grip Tools	16.00 lbs.
HICD100L	Corrugated Display* <i>(only)</i>	21 1/2"W x 30 1/4"D x 35 1/2"T <i>(without tools)</i>	10 Long Handle Tools	8.50 lbs.
HIUP4824	Utility Probe Display* <i>(only)</i>	Steel/Fiberglass 18"W x 18"W x 74"T <i>(overall)</i>	24 Probes	18.00 lbs.

* Some Assembly Required All displays sold without tools. Graphics are screen printed.



Model	Description	Specs	Grip	Nominal Wt.
HI48LHS	Shovel/Spade Long Replacement Handle	1 1/4" x 48" Fiberglass	Double-dip	2.25 lbs.
HI48LHSW	Shovel/Spade Long Replacement Handle	Shouldered 1 1/2" x 48" Ash with 9" Eye Chuck	None	1.50 lbs.
HI48NSW	Shovel/Spade Long Replacement Handle	Non-shouldered 1 1/2" x 48" Ash	None	1.50 lbs.
HI48LTSHW	Trench Shovel Replacement Handle	Shouldered 1 1/2" x 48" Ash with 4" Chuck	None	2.00 lbs.
HI48SLHS	Shovel/Spade Long Replacement Handle	1 1/4" x 48" Solid Fiberglass	Double-dip	4.00 lbs.
HI27SHD	Shovel/Spade 'D' Replacement Handle	1 1/4" x 27" Fiberglass	D-grip	1.50 lbs.
HI28SHDW	Shovel/Spade 'D' Replacement Handle	Shouldered 1 1/2" x 28" Ash with 9" Eye Chuck	D-grip	1.50 lbs.
HI27NSDW	Shovel/Spade 'D' Replacement Handle	Non-shouldered 1 1/2" x 27" Ash	D-grip	1.50 lbs.
HI40NSHDW	Shovel/Spade 'D' Replacement Handle	Non-shouldered 1 1/2" x 40" Ash	D-grip	1.75 lbs.
HI30SHD	Shovel/Spade 'D' Replacement Handle	1 1/4" x 30" Fiberglass	D-grip	1.50 lbs.
HI40SHDW	Shovel/Spade 'D' Replacement Handle	Shouldered 1 1/2" x 40" Ash with 9" Eye Chuck	D-grip	1.75 lbs.
HI48PHD	Post Hole Digger Replacement Handles	2- 1 1/4" x 48" Fiberglass Handles	Double-dip	4.50 lbs.
HI48PHDW	Post Hole Digger Replacement Handles	2- 1 1/2" x 48" Ash Handles	None	4.00 lbs.
HI60PHD	Post Hole Digger Replacement Handles	2- 1 1/4" x 60" Fiberglass Handles	Double-dip	5.50 lbs.
HI72PHD	Post Hole Digger Replacement Handles	2- 1 1/4" x 72" Fiberglass Handles	Double-dip	6.25 lbs.
HIB-147D	Double Bit Axe Replacement Handle	36" Fiberglass	None	2.00 lbs.
HIB-147DW	Double Bit Axe Replacement Handle	36" Hickory	None	1.75 lbs.
HIB-147S	Single Bit Axe Replacement Handle	36" Fiberglass	None	2.00 lbs.
HIB-147SW	Single Bit Axe Replacement Handle	36" Hickory	None	1.50 lbs.
HIA11836	Sledge/Maul Replacement Handle	36" Fiberglass	None	2.00 lbs.
HIA11836W	Sledge/Maul Replacement Handle	36" Hickory/1" x 1 3/8" Eye/8 to 16 lb. Heads	None	1.80 lbs.
HIA11830W	Sledge/Maul Replacement Handle	30" Hickory/1" x 1 1/4" Eye/6 to 8 lb. Heads	None	0.75 lbs.
HIA11936W	Sledge/Maul Replacement Handle	36" Hickory/1 1/4" x 1 1/2" Eye/20 lb. Heads	None	2.00 lbs.
HIA11810	Drilling/Engineer Hammer Handle*	10" Fiberglass	None	0.75 lbs.
HIA11820	Sledge Replacement Handle	22" Fiberglass/4 to 8 lb. Heads	None	1.00 lbs.
HIA11813	Drilling/Engineer Hammer Handle	14" Fiberglass	None	0.75 lbs.
HIA11813W	Drilling/Engineer Hammer Handle	13" Hickory/3/4" x 1" Eye	None	0.50 lbs.
HINS6-1	Pick/Mattock Replacement Handle	36" Fiberglass/#6 Eye	None	2.50 lbs.
HINS6-1W	Pick/Mattock Replacement Handle	36" Hickory/#6 Eye	None	2.25 lbs.
HI60BMH-1	Push Broom Replacement Handle	15/16" x 60" Fiberglass/Threaded Tip	Vinyl	1.25 lbs.
HI60BMH-1W	Push Broom Replacement Handle	15/16" x 60" Wood/Threaded Tip	None	1.50 lbs.
HI60BMH-2	Push Broom Replacement Handle	15/16" x 60" Fiberglass/Tapered End	Vinyl	1.25 lbs.
HI60BMH-2W	Push Broom Replacement Handle	15/16" x 60" Wood/Tapered End	None	1.25 lbs.
HI60RHH	Rake/Hoe Replacement Handle	1 1/8" x 60" Fiberglass	Vinyl	2.00 lbs.
HI60RHH-W	Large Rake/Hoe Replacement Handle*	1 3/8" x 60" Ash/Steel Ferrule	None	1.75 lbs.

* Not Shown

Order Toll Free
1-800-331-8410

Maverick
Imported by HISCO

Prod. No.	Pg. No.						
HISGS8MD-W16	HISPSB2D8	HISSSB14D10	HITACOL4-829
HISHISLH7	HISPSB2L8	HISSSB14L10	HITMH-621
HISHISSH7	HISS14D9	HISSSB16D11	HITMH-821
HISHISSH-L7	HISS14DG2	HISSSB16L11	HITMH-1021
HISP2D7	HISS14D-CB10	HIST3-428	HITS-839
HISP2D-CB8	HISS14D-M9	HIST3-4G3	HITS-1039
HISP2D-W7	HISS14D-W9	HIST3-4W28	HITS-1239
HISP2DW-CB8	HISS14DW-CB10	HIST4-429	HITS481D29
HISP2L7	HISS14L9	HIST4-4G3	HITS481L29
HISP2L-CB8	HISS14LG2	HIST4-4W29	HITS481L-W29
HISP2L-M7	HISS14L-CB10	HIST5-430	HITS483LCD30
HISP2L-W7	HISS14L-W9	HIST5-4G3	HITS483LCD-W30
HISP2LW-CB8	HISS14LW-CB10	HIST5-4W30	HITS721L29
HISP2MD7	HISS14MD9	HIST6-430	HITSEP-839
HISP2MD-CB8	HISS14MD-W9	HIST6-4G3	HITSEP-1039
HISP2MD-W7	HISS16D11	HIST6-4W30	HITSEP-1239
HISP2MDW-CB8	HISS16DG2	HITACO3-428	HITSWP-839
HISPDG2	HISS16D-CB11	HITACO3-4W28	HITSWP-1039
HISPLG2	HISS16D-W11	HITACOL3-428	HITSWP-1239
HISPMSD3	HISS16DW-CB11	HITACOL3-4W28	HIUP-3641
HISPMSL3	HISS16L11	HITACOL3-628	HIUP-36B41
HISPRY4431	HISS16LG2	HITACOL3-828	HIUP-4241
HISPRY4931	HISS16L-CB11	HITACOL4-429	HIUP-42B41
HISPRY41C31	HISS16L-W11	HITACOL4-4W29	HIUP-4841
HISPRY46C31	HISS16LW-CB11	HITACOL4-629	HIUP-48B41
						HIUP482441
						HIUT2-3640
						HIUT2-4840
						HIUT-3640
						HIUT-4840
						HIWK-338
						HIWK-438
						HIWK-538
						HIWS-4841

Professional Tools Built For Performance!



Corporate Headquarters:
4320 N. Cooper Avenue
Oklahoma City, OK 73118

Mailing Address:

P.O. Box 18481 • Oklahoma City, OK 73154-0481
TEL 405-524-2700 • 1-800-331-8410
FAX 405-524-2737 www.hisco-okc.com

Distributed By:

Printed in USA • © HISCO 2010



Professional Tools
Built For Performance!

www.hisco-okc.com

ProGold Series Round Point • ProGold Series Square
Drain Spade/Sharp Shooter • ProGold Series Caprock
Gold Series Mud Round Point • ProGold Series Mud
Rice Shovel • Hisco Caprock Irrigation Shovel • Hisco
• Hisco Square Point Shovel • Hisco 14" Drain Spade/
Hisco Size 2 Garden Spade • Hisco Size 16" Ditch/Post
General Purpose/Street Scoop • Hisco Eastern Pattern
Coal Scoop • Hisco Size 8 Western Pattern Grain Scoop
Size 14 Western Pattern Scoop • Hisco Size 12 Non-
Hisco Heavy Duty Scraper • Hisco Four-Tine Roofer's
Back Tear-Off Spade • Hisco Rein-
Back Tear-Off Spade • Hisco Angle
• Hisco Floor/Ice Scraper • Heavy-
Bar • Hisco All Purpose Bar • Hisco
Four-Tine Spading Fork • Hisco Five-
Step Trench Shovel • Hisco Three-Inch
Lite Tool • Three-Inch Trench Clean-
Trench Shovel • Hisco Four-Inch Mini-
Shovel • Four-Inch TACO Lite Tool • Four-
Step Trench Shovel • Six-Inch Step Trench
• Hisco Three-Inch Trench Tamper • Hisco Four-Inch Trench Tamper • Hisco Five-Inch Trench Tamper •
Hisco Six-Inch Trench Tamper • Hisco Post Hole Digger • Hisco Ditch Bank Tool • Hisco Heavy-Duty
Ditch Bank Tool • Hisco Weed Cutter • Hisco Deluxe 22-Tine Lawn Rake • Hisco 24" Poly Leaf Rake
• Hisco Forged Head Culvert Rake • Hisco Forged Head Manure Rake • Hisco 24-Tine Field and
Landscape Rake • Hisco 36-Tine Field and Landscape Rake • Hisco 24-Tooth Light Lute • Forged
Head 16-Tine Bow Rake • Forged
Head 14-Tine Asphalt Rake • McLeod
• Hisco Mini Mortar Hoe • Hisco All
Backfill Lute • Asphalt and Backfill
• Hisco Concrete Placer w/Hook •
Cant Hook • Hisco No. 12 Cant Hook
• Hisco 72" Valve Wrench Schedule 40
Pipe • Hisco 36" Water Meter Key •
36" Gate Valve Key • Hisco 25" Man-
Bar • Hisco Rectangular Tamping Bar
Spoon • Western Pattern Telegraph
Trencher • Heavy Duty Cable Trencher "T"
Undertaker® Cable Placer • Hisco 48" Extendible
Utility Probe • Hisco 48" Utility Probe • Hisco
Blunt-Tip Utility Probe • Hisco 48" Walking
Firefighter's Pulaski Axe • Hisco Rail-
Killing Hammer • Hisco Engineer Hammer
24" Floor Push Broom • 24" Floor Push
24" Curved Squeegee • Renegade
Caprock Irrigation Shovel • Renegade Size
16" Drain Spade/Sharp Shooter •
Point • ProGold Series Garden Spade
Irrigation • ProGold Series Step Trench
Square Point • Hisco Round Point • Hisco
100 Irrigation Shovel • Hisco Small-Head
Sharp Shooter • Hisco 16" Drain Spade/
Spade • Hisco Size 2 Sand/Gravel/Bunk
Asphalt Scoop • Hisco Size 2 Western Pa
• Hisco Size 10 Western Pattern Grain Scoop
Sparkling Grain Scoop • Hisco EZ Off Scratch
Fork • Hisco Open Back Tear-Off Spade • Hisco
forced Tear-Off Spade • Hisco Ang
Back Tear-Off Spade Piranha Teet
Duty Floor/Ice Scraper • Hisco Spu
All Purpose Bar w/Tamper • Hisco
Tine Manure Fork • Hisco Three-Inch
Original TACO Tool • Three-Inch TACO
Out Shovel • Hisco Four-Inch Classic
Trench Shovel • Four-Inch Step Trench
Inch Trench Clean-Out Shovel • Five-Inch
Shovel • Hisco Heavy Duty Tamper w/Gussets
Handle • Hisco 36" Undertaker® Cable Placer • Hisco
Undertaker® Cable Placer • Hisco 36" Utility Probe •
48" Extendible Utility Probe • 36" Blunt-Tip Utility Probe
Stick/Cattle Prod • Hisco Single Bit Axe • Hisco Double
road Clay Pick • Hisco Pick Mattock • Hisco Cutter Mat-
• Hisco Sledge Hammer • Hisco 16" Street Push Broom
Broom • Hisco 24" Street Push Broom • 24" Driveway
Round Point Shovel • Renegade Square Point Shovel
100 Irrigation Shovel • Renegade 14" Drain Spade/Sharp
Renegade Size 2 Garden Spade • Size 16 Ditch/Post