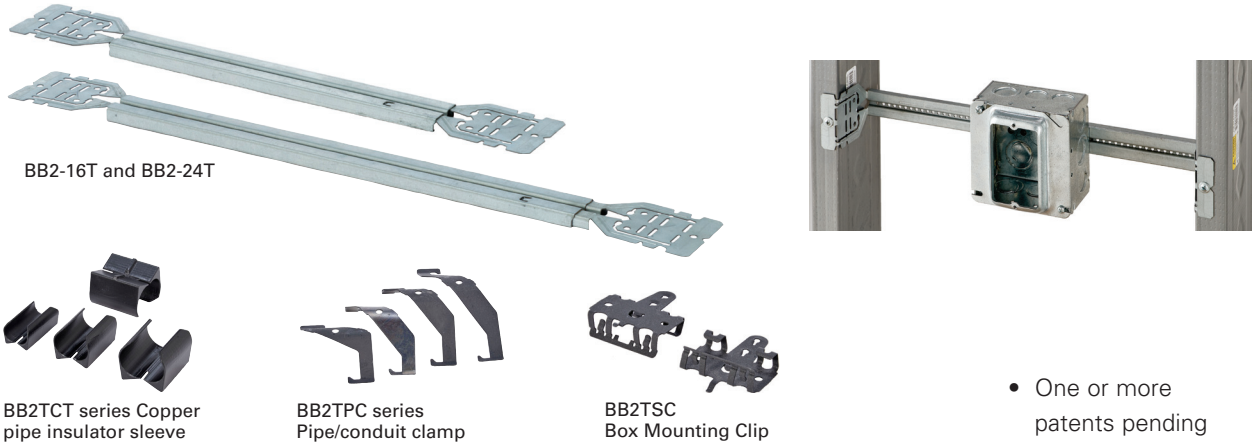


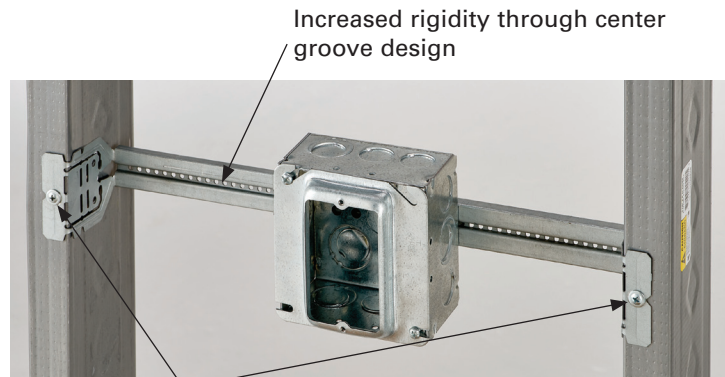
BB2-16T & BB2-24T

The B-Line series telescoping box mounting bracket and box mounting clip allow for pre-fabrication of the box assembly which helps reduce time on job sites. The bracket features a unique flange end that can mount multiple box depths beyond the standard 2 1/8" deep boxes. The bracket has increased rigidity to help withstand drywall installation.



UPC Part #	Catalog #	Description	Box Qty.
79903863001	BB2-16T	Telescoping Bracket - 11" to 18" Stud Spacing	50
79903863002	BB2-24T	Telescoping Bracket - 15" to 26" Stud Spacing	50
79903863003	BB2TSC	Box Mounting Clip	100
79903863004	BB2TPC-038	Pipe/Conduit Clamp 3/8"	100
79903863005	BB2TPC-050	Pipe/Conduit Clamp 1/2"	100
79903863006	BB2TPC-075	Pipe/Conduit Clamp 3/4"	100
79903863007	BB2TPC-100	Pipe/Conduit Clamp 1"	100
79903863013	BB2TCT-050	Copper Pipe Insulator Sleeve 1/2"	100
79903863015	BB2TCT-075	Copper Pipe Insulator Sleeve 3/4"	100
79903863016	BB2TCT-100	Copper Pipe Insulator Sleeve 1"	100

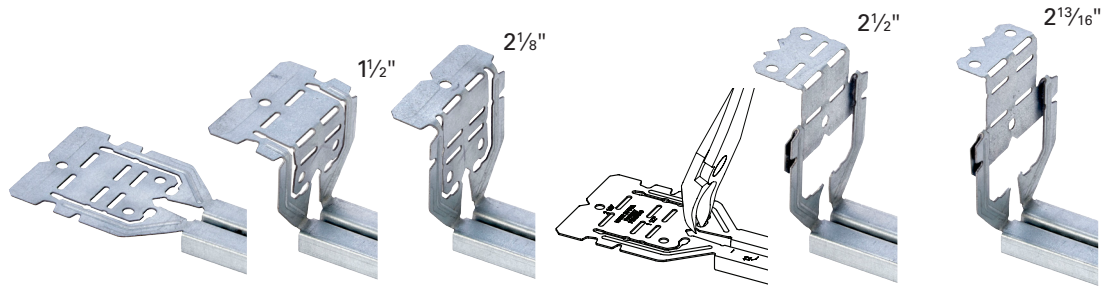
Features & Benefits



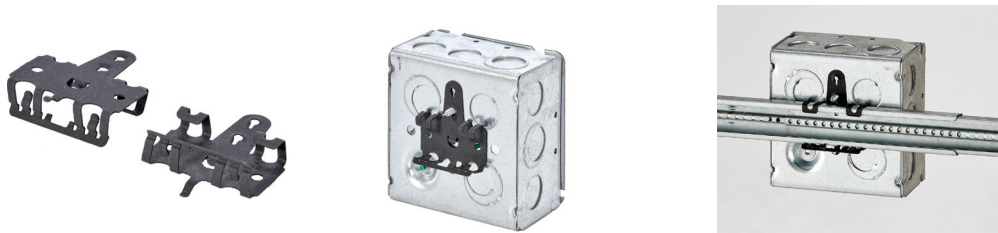
Only two screws required to mount for 1 1/2" and 2 1/8" box depths

Features & Benefits

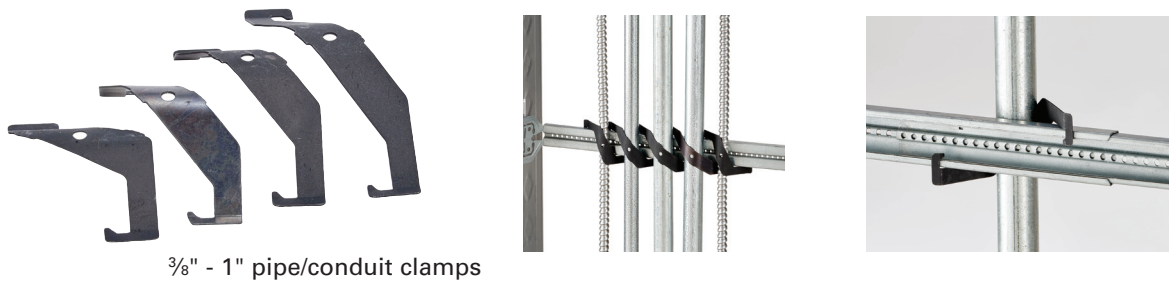
- Flange ends can be cut and bent to mount multi-gang, 5" SQ, masonry, and speaker/strobe boxes
- Marked bend slots for mounting 1½" and 2⅞" box depths



- Box mounting clip attaches to electrical box to bracket without hardware



- Pipe/conduit clamps require no hardware to install and provide support anywhere between the stud



3/8" - 1" pipe/conduit clamps

- Copper pipe insulator provides protection of differing metals



For more information, visit www.cooperbline.com/BB2.