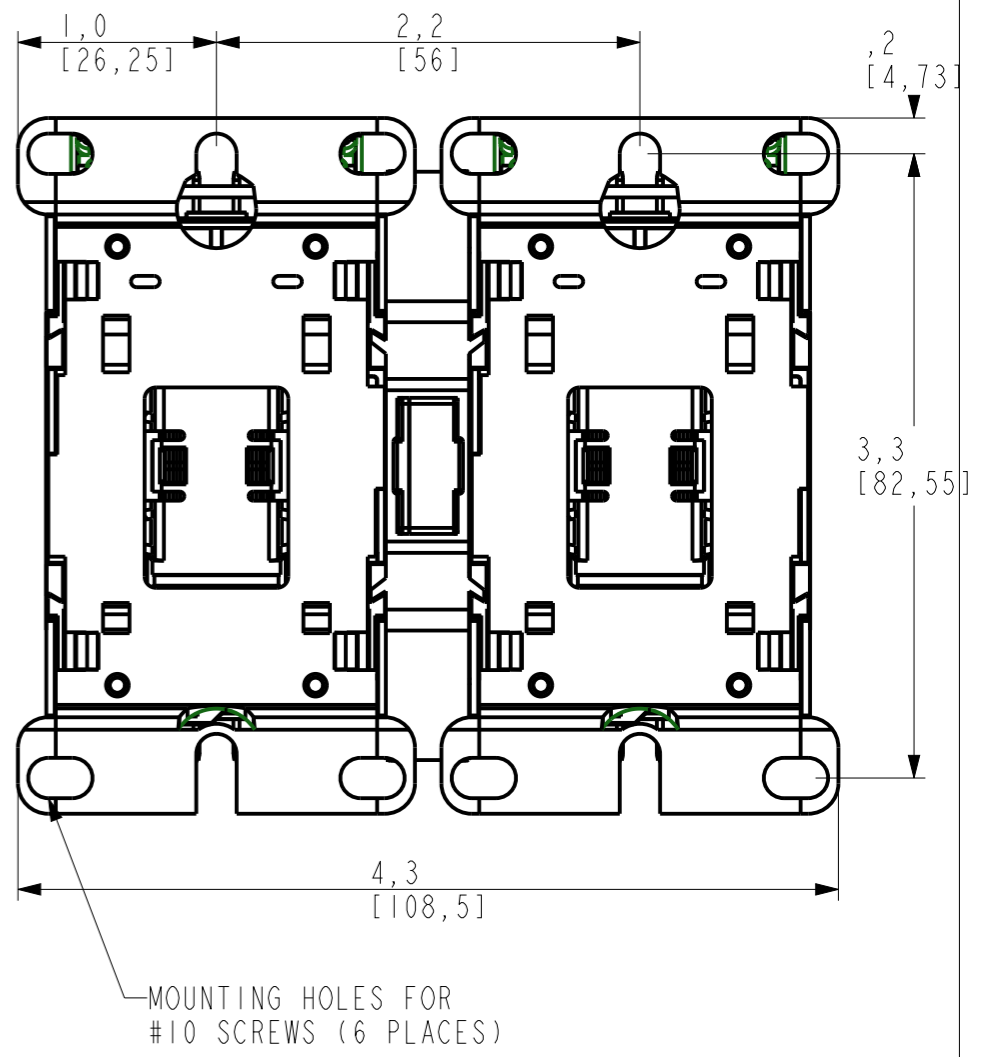
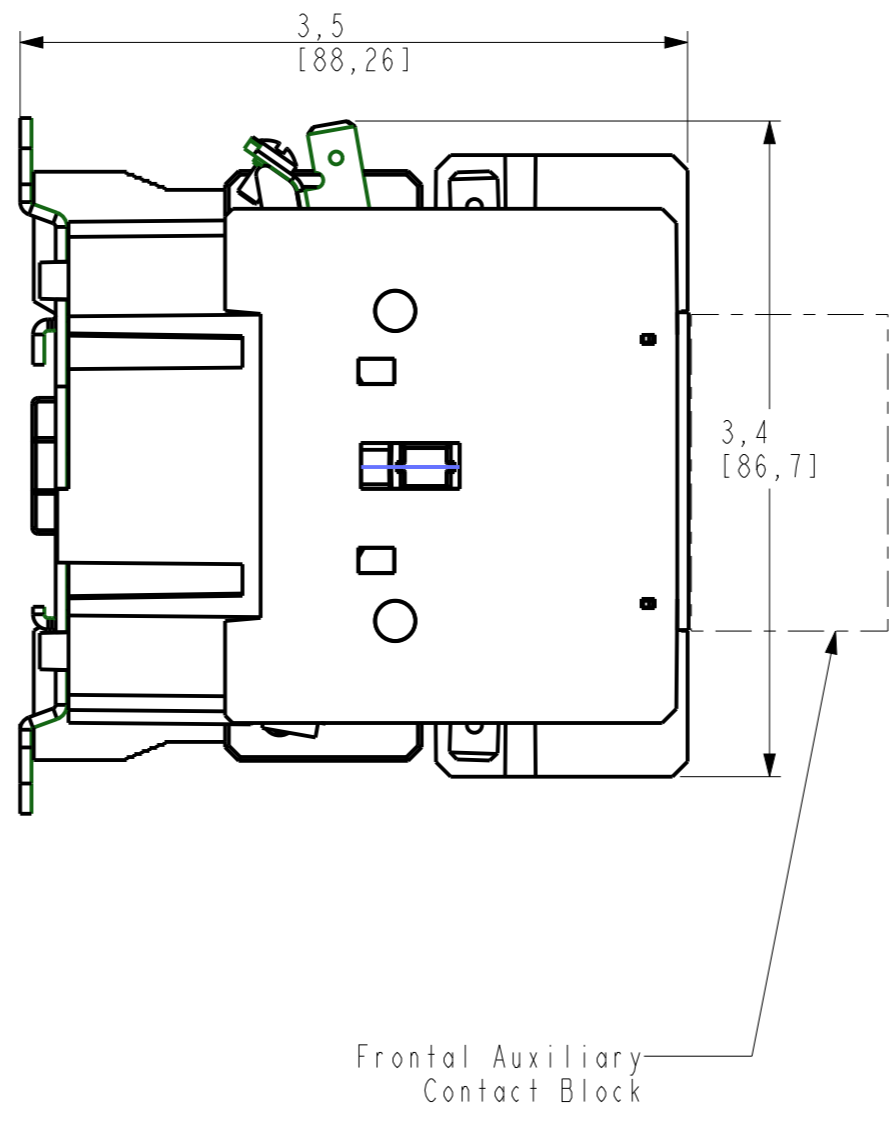
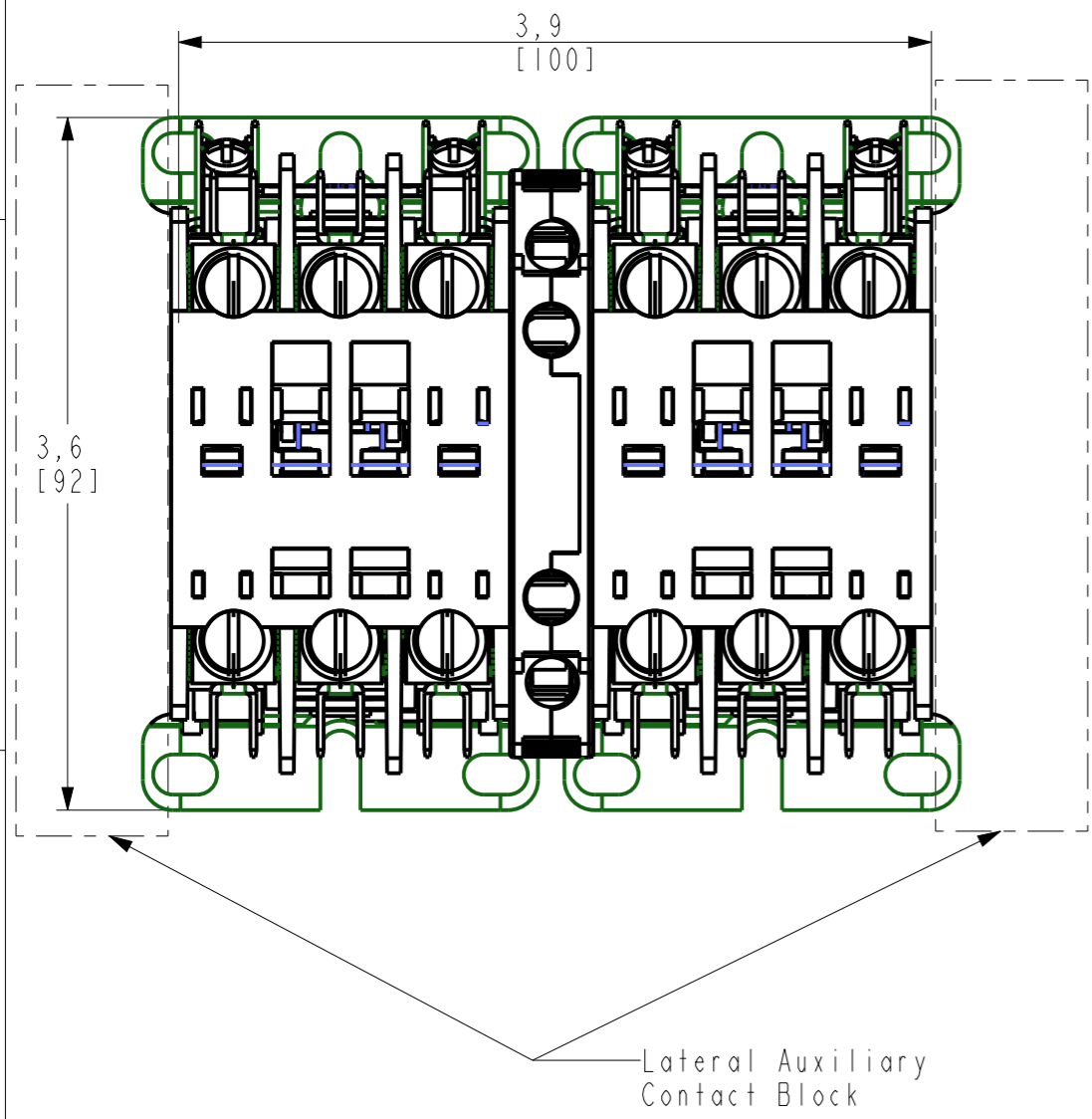


GEPC INTRALINK DATABASE INFO - FOR INTERNAL USE ONLY			
DRAWING FILE NAME:	OBJECT RELATED INFORMATION	REVISION	STATUS:
TERES-45010111XX-00-00		1	1
OBJECT FILE NAME:	SYS:	COM:	Create
TERES-45010111XX-00-00	1	1	



GE PROPRIETARY AND CONFIDENTIAL INFORMATION: This document is the property of General Electric Company. GE, GEY, and GE Energy are trademarks of GE Energy. This document is controlled by GE Energy. No part of this document shall be reproduced, stored in a retrieval system, or transmitted in any form or by any means, electronic, mechanical, photocopying, recording, or by any information storage and retrieval system, without the prior written consent of GE Energy, and that the information shall be used only as approved expressly by GE Energy. This document shall be returned to GE upon its request. This document may be subject to certain restrictions under U.S. export control laws and regulations.

DUAL DIMENSIONS INCHES/MILLIMETERS

REVISION	DESCRIPTION	DATE	NAME	CHECKED	APPROVED	ECN NO
01	First Issue	22-Apr-15	S.Rivadeneira	-	-	-
REMARK	DESCRIPTION					
-	-					
PRODUCT			MATERIAL			POST TREATMENT
ID	ID 6/8 DIG	DESCRIPTION	REM	ID	DESCRIPTION	REM
-	-	-	-	-	-	-
UNLESS OTHERWISE SPECIFIED						CTQ
TOL DIMENSIONS	TOL ANGLE	FILLET & TOL	DRAFT ANGLE	OTHERS	Scale 1:1	PROJECTION
-	-	-	-	-	UNIT: in	ASSEMBLY: assembly_no
						SUPERSEDES: -
						SUPERSEDED BY: -



TITLE: DP 2-Speed Cont DP25/30 3P + DP25/30 3P
 Outline drw.
 CR-553A
 LOCAL: DP 2-Speed Cont DP25/30 3P + DP25/30 3P Outline drw.

TERES-45010111XX-00-00	CAD FILE	SIZE	PAGE	OF
		A3	1	1
DRAW NO	450B10111GXX			

Article or Material Must Conform to REACH Procedure S1900000 Sec.14
 Article or Material Must Conform to ROHS Procedure S1900000 Sec.13
 Part Must Conform to S1900000 Sec.4 Toxicity Procedure