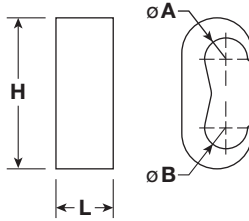




Ground Grid Connector Instruction Sheet



DIRECT BURIAL

Material: High-Conductivity Copper

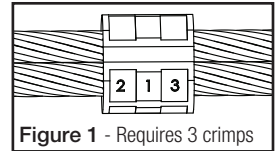


Figure 1 - Requires 3 crimps

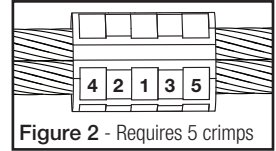


Figure 2 - Requires 5 crimps

CAT. NO.	øA CABLE RANGE	øB CABLE RANGE	H	L	CRIMPS	DIES FOR T&B TOOLS (see Step 4)
CTP500500*	300 - 500 kcmil	300 - 500 kcmil	2-29/32"	1-1/8"	3	15G121R* (Fig. 1)
CTP500250	300 - 500 kcmil	3/0 STR. - 250 kcmil	2-11/16"	7/8"	2	15G121R
CTP50020	300 - 500 kcmil	#6 SOL. - 2/0 STR.	2-7/16"	7/8"	2	15G121R
CTP250250	3/0 STR. - 250 kcmil	3/0 STR. - 250 kcmil	2-1/16"	7/8"	1	15G86R
CTP25020	3/0 STR. - 250 kcmil	#1 STR. - 2/0 STR.	1-31/32"	3/4"	1	15G86R
CTP2020	#1 STR. - 2/0 STR.	#1 STR. - 2/0 STR.	1-9/16"	3/4"	1	15501A
CTP202	#1 STR. - 2/0 STR.	#6 SOL. - #2 STR.	1-13/32"	3/4"	1	15501A
CTP22	#6 SOL. - #2 STR.	#6 SOL. - #2 STR.	1-5/32"	3/4"	1	HBKC
CTP500500N*	300 - 500 kcmil	300 - 500 kcmil	2-29/32"	2-1/2"	5	15G121N (Fig. 2)
CTP250250N*	3/0 STR. - 250 kcmil	3/0 STR. - 250 kcmil	2-1/16"	1-1/2"	3	15506* (Fig. 1)
CTP25020N*	3/0 STR. - 250 kcmil	#1 STR. - 2/0 STR.	1-31/32"	1-1/2"	3	15506* (Fig. 1)
CTP2020N*	#1 STR. - 2/0 STR.	#1 STR. - 2/0 STR.	1-9/16"	1-1/2"	3	15517* (Fig. 1)
CTP202N*	#1 STR. - 2/0 STR.	#6 SOL. - #2 STR.	1-13/32"	1-1/2"	3	15517* (Fig. 1)
CTP22N*	#6 SOL. - #2 STR.	#6 SOL. - #2 STR.	1-5/32"	1-1/2"	3	15534* (Fig. 1)

***NOTE: MUST USE TBM15, TBM15CR-LI, or TBM15I TOOL ONLY.**

IF USING THE TBM15, TBM15CR-LI, or TBM15I TOOL,
A DIE ADAPTER NO. 15500-TB IS REQUIRED.

INSTRUCTIONS:

- Using wire brush (WWB1) or rough cloth, clean cable of all visible dirt to bright copper finish.
- Insert cable into connector. Cable end(s) should protrude at least 3/4" beyond connector.
- Crimp using appropriate die and tool as specified for connector.
- Use Hydraulic Tool 13100A, TBM14M, TBM14CR-LI, TBM15CR-LI, TBM15 or TBM15I with die indicated in chart.

BURNDY TOOLS

CAT. NO.	Y750/Y39	Y45	Y46	CRIMPS
CTP500500	U1011	S1011	P1011	3
CTP500250	U1011	S1011	P1011	2
CTP50020	U1011	S1011	P1011	2
CTP250250	U997	U997	U997	1
CTP25020	U997	U997	U997	1
CTP2020	U-0	U-0	U-0	1
CTP202	U-0	U-0	U-0	1
CTP22	U-C	U-C	U-C	1

Thomas & Betts

A Member of the ABB Group

WARRANTY: Thomas & Betts sells this product with the understanding that the user will perform all necessary tests to determine the suitability of this product for the user's intended application. Thomas & Betts warrants that this product will be free from defects in materials or workmanship for a period of two (2) years following the date of purchase. Upon prompt notification of any warranted defect, Thomas & Betts will, at its option, repair or replace the defective product. Misuse, misapplication or modification of Thomas & Betts Products immediately voids all warranties.

Limitations and Exclusions: THE ABOVE WARRANTY IS THE SOLE WARRANTY CONCERNING THIS PRODUCT, AND IS IN LIEU OF ALL OTHER WARRANTIES EXPRESS OR IMPLIED, INCLUDING BUT NOT LIMITED TO ANY IMPLIED WARRANTY OF MERCHANTABILITY OR FITNESS FOR A PARTICULAR PURPOSE, WHICH ARE SPECIFICALLY DISCLAIMED. LIABILITY FOR BREACH OF THE ABOVE WARRANTY IS LIMITED TO COST OF REPAIR OR REPLACEMENT OF THE PRODUCT, AND UNDER NO CIRCUMSTANCES WILL THOMAS & BETTS BE LIABLE FOR ANY INDIRECT, SPECIAL, INCIDENTAL OR CONSEQUENTIAL DAMAGES.