

15/25kV	600A Deadbreak Reducing Tap Well	K650RTW
---------	----------------------------------	---------



Features:

- Fully rated 15/25kV, 600 Amp Deadbreak Reducing Tap Well
- Can be used with 200A Loadbreak or Deadbreak inserts
- Provisions for spanner wrench installation
- Includes Bail Tabs

K650RTW Reducing Tap Well

Applications:

The 15/25kV K650RTW permits a 200 A deadbreak or loadbreak tap-off of a 600A connector. The K650RTP 200A tap accepts Elastimold® 200A deadbreak and loadbreak inserts. For assembly, a 600SW spanner wrench is required.

Ratings:

Meets ANSI/IEEE Standard 386, Latest Revision

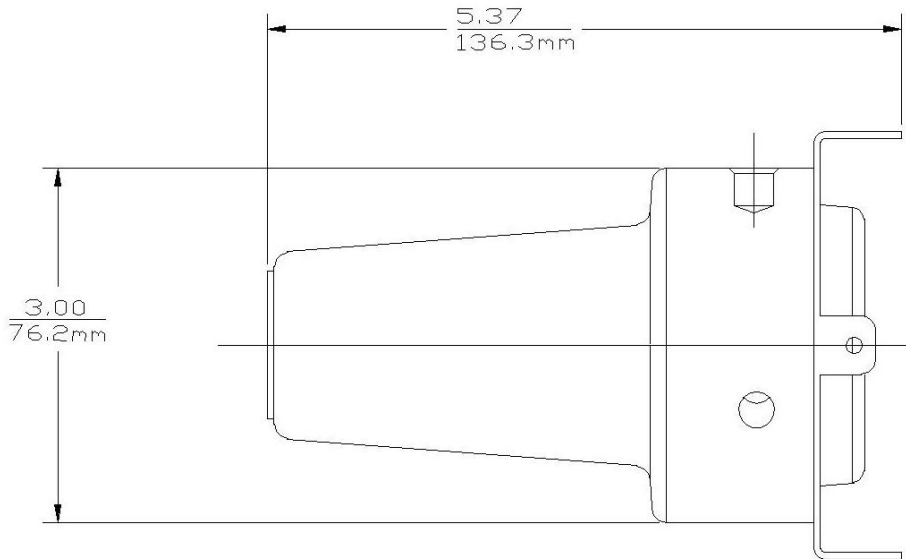
For 15kV Voltage Class:

8.3kV Max Phase-to-Ground – Operating Voltage
 14.4kV Max Phase-to-Phase
 95kV BIL – Impulse Withstand (1.2 x 50 microsecond wave)
 34kV AC – One minute withstand
 53kV DC – 15 minutes withstand
 11kV AC – Corona Extinction @ 3pC sensitivity
 600 Amp – Continuous
 25kA Sym – 10 Cycles Momentary

For 28kV Voltage Class:

16.2kV Max Phase-to-Ground – Operating Voltage
 28kV Max Phase-to-Phase
 140kV BIL – Impulse Withstand (1.2 x 50 microsecond wave)
 45kV AC – One minute withstand
 84kV DC – 15 minutes withstand
 21.5kV AC – Corona Extinction @ 3pC sensitivity
 600 Amp – Continuous
 25kA Sym – 10 Cycles Momentary

15/25kV	600A Deadbreak Reducing Tap Well	K650RTW
---------	----------------------------------	---------



Ordering Instructions:

To order 15/25kV, 600A reducing tap well, specify **K650RTW**.

Each kit contains the following:

- | | | |
|---|--------------------------|---------|
| 1 | Reducing Tap Well | K650RTW |
| 1 | Tube, lubricant | 82-08 |
| 1 | Installation Instruction | IS-0230 |

Example:

The ordering number for a 600 Amp insulating well is K650RTW.