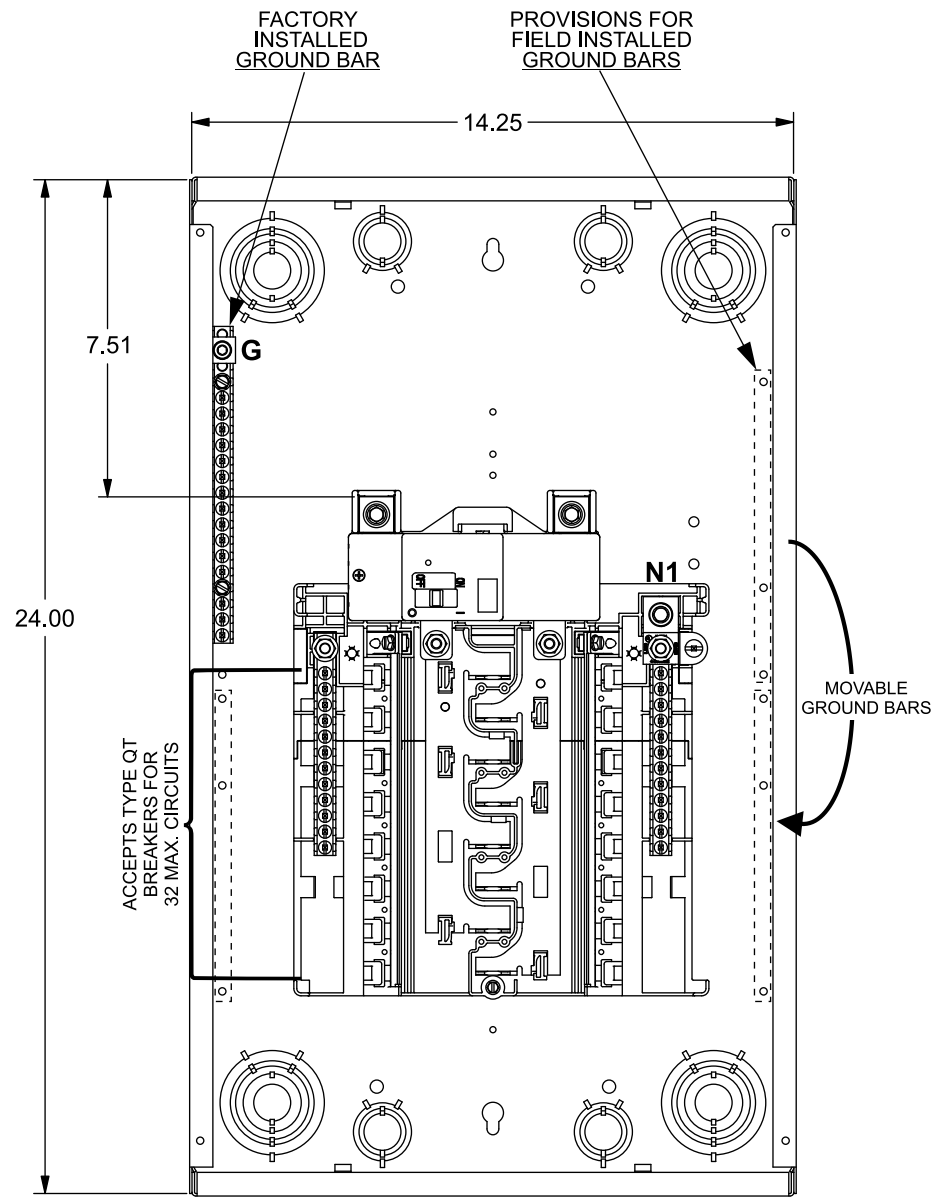
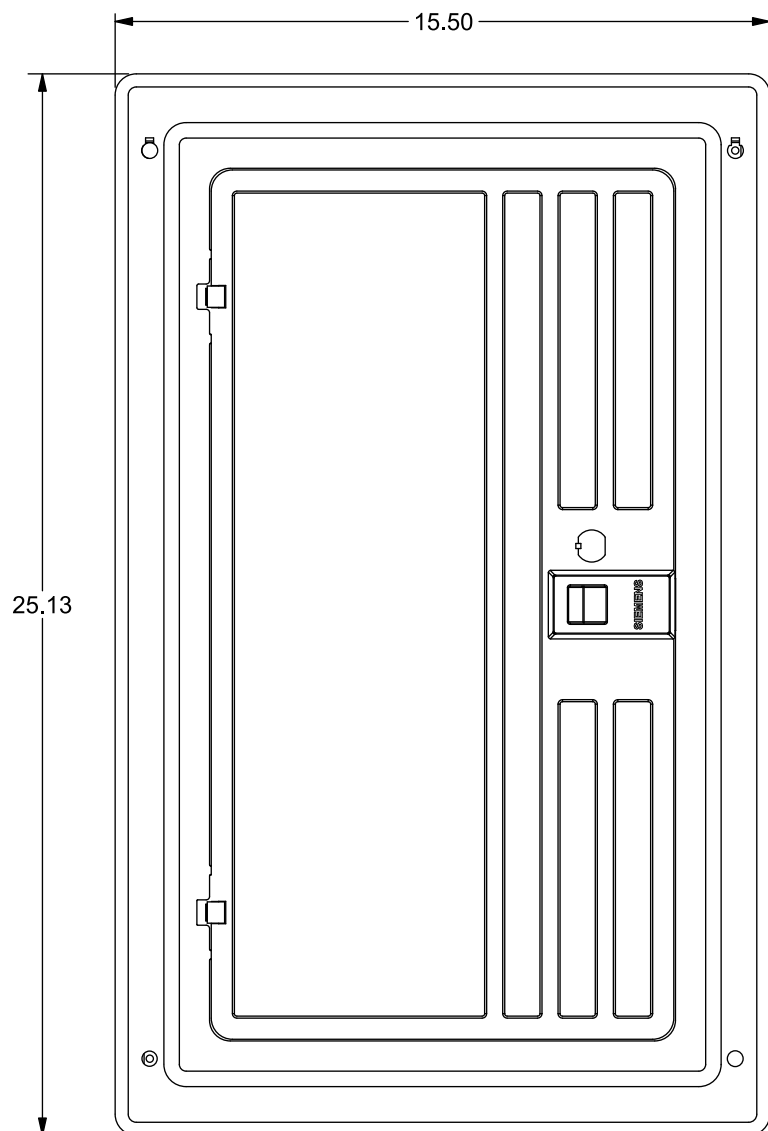
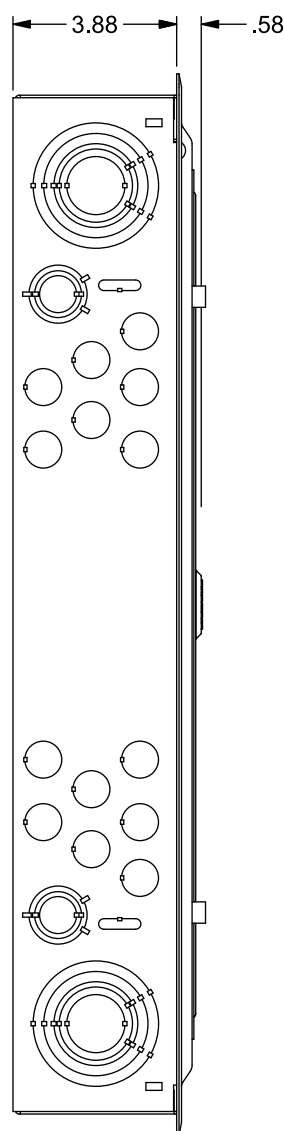


## Catalog Numbers, Features and Ratings

- 1 PHASE, 3 WIRE, 120/240V ~
- 150A, 22K AIC MAIN BREAKER FACTORY INSTALLED  
(SEE WIRING DIAGRAM FOR DETAILS)
- MAIN BREAKER ONLY
- INVERTIBLE
- TYPE N1 INDOOR ENCLOSURE
- ANSI 61 GRAY POWDER COATED ENCLOSURE  
(SEE CHART FOR TRIM/DOOR COLOR)
- DESIGNED FOR USE WITH PLUG-ON NEUTRAL BREAKERS

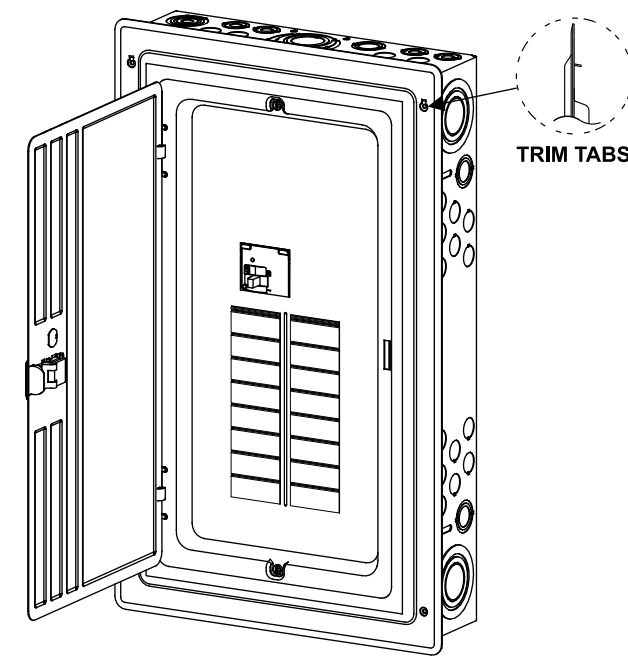


| Catalog Number | ENCLOSURE DIMS (Inside) |       |      | Amps Max | Number Spaces | Number Circuits | Bus Bar Material | Bus Bar Plating | Trim Color |
|----------------|-------------------------|-------|------|----------|---------------|-----------------|------------------|-----------------|------------|
|                | L                       | W     | D    |          |               |                 |                  |                 |            |
| SN1632B1150    | 24.00                   | 14.25 | 3.88 | 150      | 16            | 32              | Aluminum         | Tin Plated      | Gray       |
| SN1632B1150W   | 24.00                   | 14.25 | 3.88 | 150      | 16            | 32              | Aluminum         | Tin Plated      | White      |

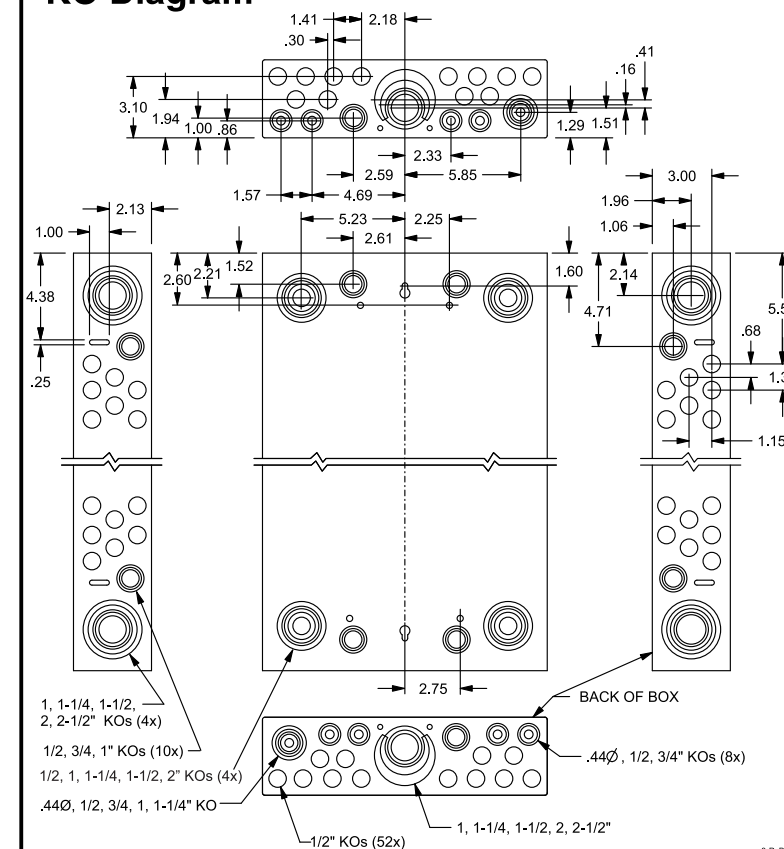


VIEW SHOWN WITH TRIM ASSEMBLY REMOVED

## Trim/Door Detail



## KO Diagram



## TERMINAL WIRE SIZES AND TORQUES

USE COPPER OR ALUMINUM 60°/75°C WIRE  
SEE BREAKER MARKINGS FOR WIRE SIZE AND TORQUE REQUIREMENTS

| TERMINALS   | WIRE                                     | TORQUE                              |
|---|--|-------------------------------------|
| N1  | 300 kcmil - 4 AWG                        | 250 LB-INS                          |
| G   | 2/0 - 4 AWG                              | 110 LB-INS                          |
| MAIN BREAKER - LINE   | 4/0 AWG CU;<br>300 kcmil AL Max.         | See Breaker                         |
| NEUTRAL/GROUND BARS<br>(USE TYPE EC2GB or EC3GB<br>GND BAR KIT ACCESSORY) | 10-14 CU/10-12 AL<br>8 AWG<br>6-4 AWG    | 20 LB-INS<br>25 LB-INS<br>35 LB-INS |
| GROUND CONDUCTORS ONLY  | (2)or(3) 14 AWG<br>(2) 12-10 AWG         | 20 LB-INS<br>20 LB-INS              |
| N2  | ECLK2N NEUTRAL LUG<br>ECLK3N NEUTRAL LUG | 110 LB-INS<br>250 LB-INS            |
| ECLK1-2 NEUTRAL LUG KIT   | 2/0 - 4 AWG                              | 45 LB-INS                           |
| ECLK2 NEUTRAL LUG KIT   | 2/0 - 4 AWG                              | 135 LB-INS                          |
| ECLK3 NEUTRAL LUG KIT   | 300 kcmil - 1 AWG                        | 340 LB-INS                          |
| MAIN BREAKER TO BUS CONNECTION (1/4-20 NUT)                               |  | 45 LB-INS                           |
| BONDING SCREW   |  | 45 LB-INS                           |

## ACCESSORIES

REFER TO WIRING DIAGRAM FOR  
CORRECT ACCESSORY USAGE

| MAIN BREAKER KITS    |          |
|----------------------|----------|
| DESCRIPTION          | CAT. NO. |
| 150 AMP MAIN BREAKER | MBK150A  |

| ACCESSORIES               |                      |
|---------------------------|----------------------|
| DESCRIPTION               | CAT. NO.             |
| DOOR LOCK                 | ECQFL2               |
| FILLER PLATE, 1"          | QF3                  |
| SUBFEED LUG KIT           | ECLK2125<br>ECLK2225 |
| STANDBY PWR INTERLOCK KIT | ECSBPK10             |
| SURF. MOUNT SPACER KIT    | ECSMK1               |
| ARC FLASH LABEL           | ECAFL                |

| GROUND BAR KITS                    |          |
|------------------------------------|----------|
| DESCRIPTION                        | CAT. NO. |
| TYPE EC2GB KIT, 12 SCREWS          | EC2GB12  |
| TYPE EC2GB KIT, 12 SCREWS, 2/0 LUG | EC2GB122 |
| TYPE EC2GB KIT, 15 SCREWS          | EC2GB15  |
| TYPE EC2GB KIT, 15 SCREWS, 2/0 LUG | EC2GB152 |
| TYPE EC3GB KIT, 21 SCREWS          | EC3GB21  |
| TYPE EC3GB KIT, 21 SCREWS, 2/0 LUG | EC3GB212 |
| TYPE EC3GB KIT, 27 SCREWS          | EC3GB27  |
| TYPE EC3GB KIT, 27 SCREWS, 2/0 LUG | EC3GB272 |
| TYPE EC3GB KIT, 30 SCREWS          | EC3GB30  |
| TYPE EC3GB KIT, 30 SCREWS, 2/0 LUG | EC3GB302 |
| TYPE EC3GB KIT, 35 SCREWS, 2/0 LUG | EC3GB352 |

© 2020 Copyright Siemens Industry, Inc.

**SIEMENS**  
Siemens Industry, Inc.

**Load Center**

Description: **SN Series, 1 Phase, Indoor,  
150A, 16 Pos, 32 Ckt, Main Breaker**

KAM 3/16/20 DO NOT SCALE DRAWING Dwg No. **SN1632B1150-W**