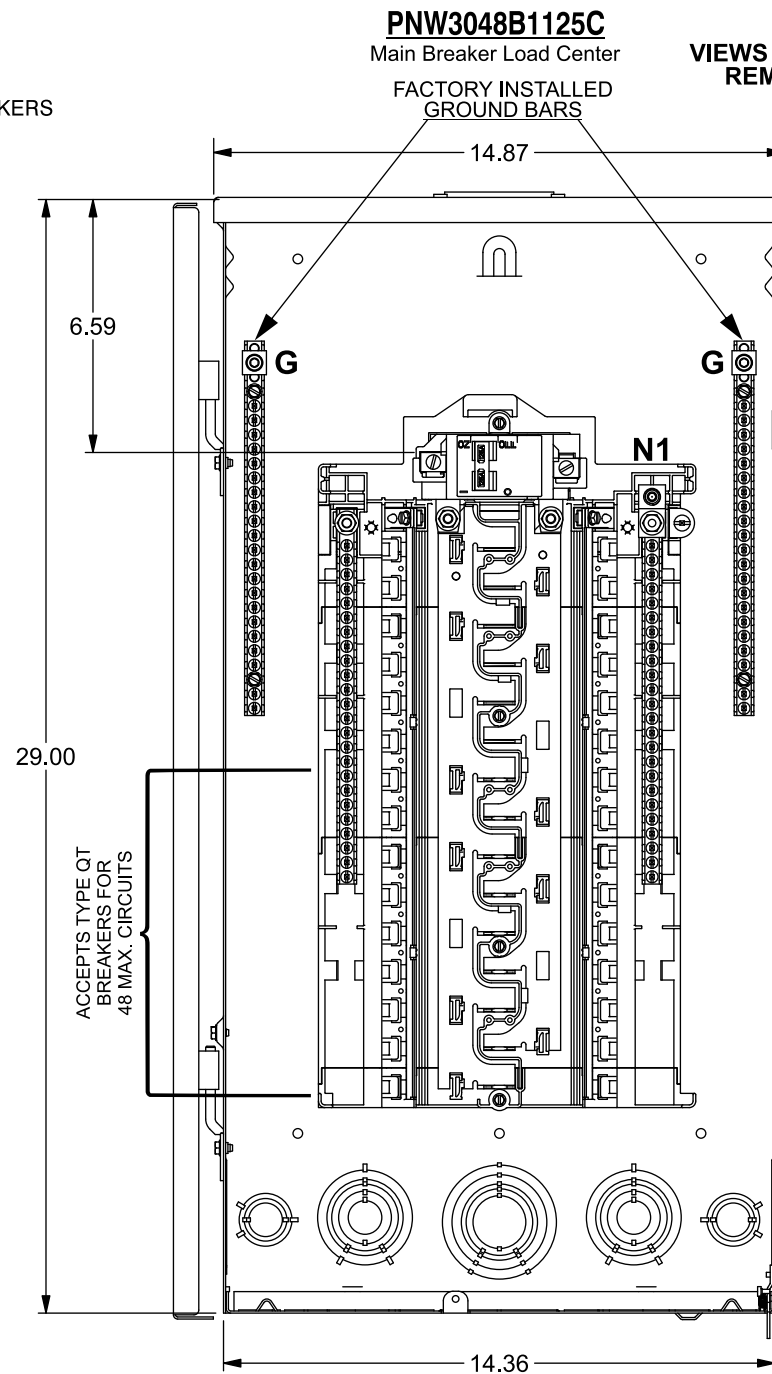
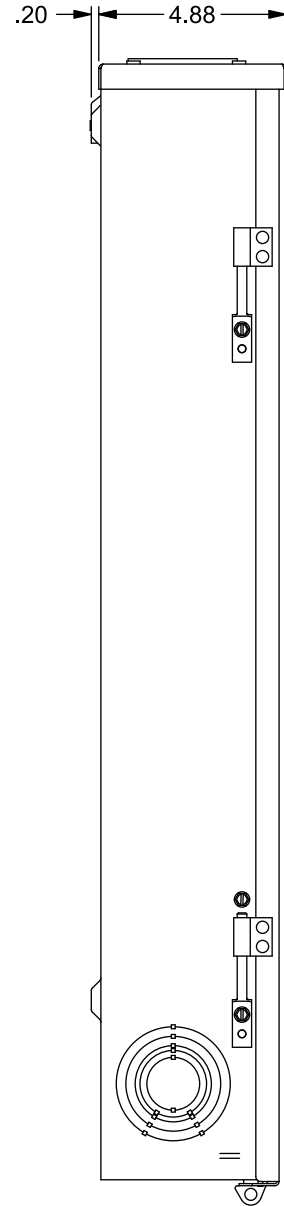


Catalog Numbers, Features and Ratings

- 1 PHASE, 3 WIRE, 120/240V ~
- MAIN BREAKER: 125A, 22K AIC MAIN BREAKER FACTORY INSTALLED
MAIN LUG: 100K AIC MAX. RATED
(SEE WIRING DIAGRAM FOR DETAILS)
- CONVERTIBLE MAIN LUG/MAIN BREAKER
- TYPE 3R OUTDOOR ENCLOSURE
- ANSI 61 GRAY POWDER COATED ENCLOSURE
- DESIGNED FOR USE WITH PLUG-ON NEUTRAL BREAKERS

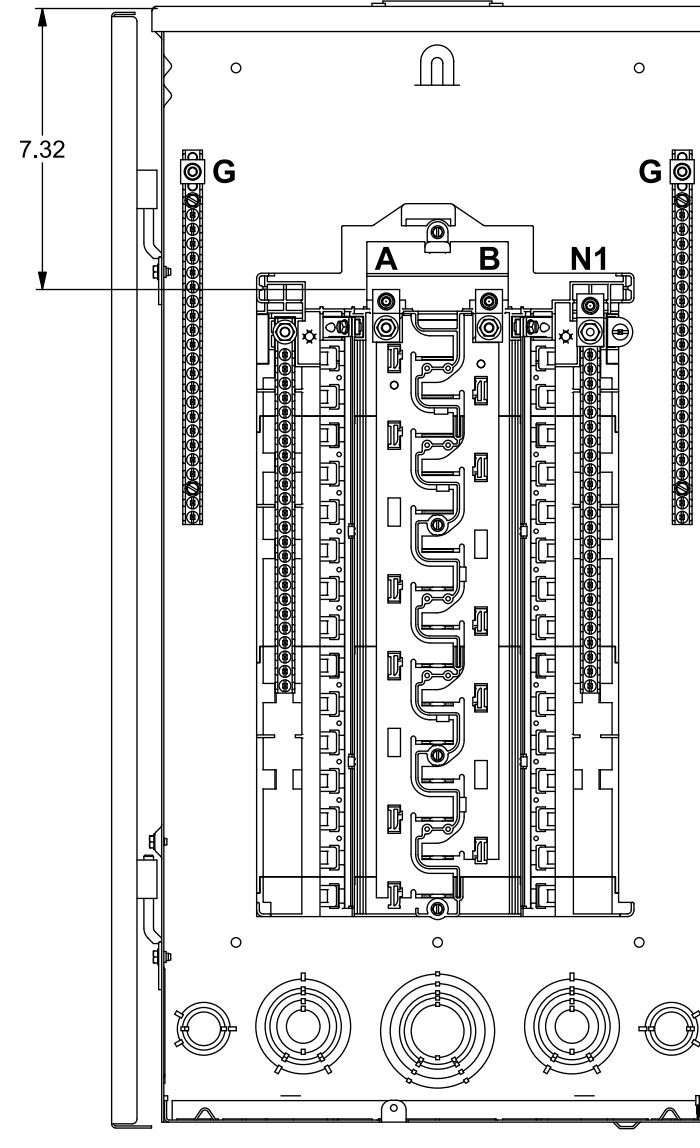


| Catalog Number | ENCLOSURE DIMS (inside) | | | Amps Max | Number Spaces | Number Circuits | Bus Bar Material | Bus Bar Plating |
|----------------|-------------------------|-------|------|----------|---------------|-----------------|------------------|-----------------|
| | L | W | D | | | | | |
| PNW3048B1125C | 29.00 | 14.25 | 4.50 | 125 | 30 | 48 | Copper | None |
| PNW3048L1125C | 29.00 | 14.25 | 4.50 | 125 | 30 | 48 | Copper | None |



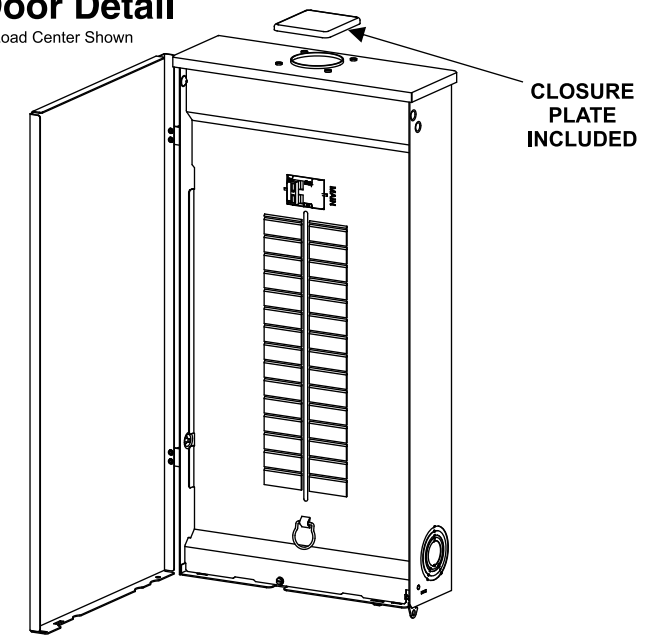
PNW3048B1125C
Main Breaker Load Center
FACTORY INSTALLED GROUND BARS

PNW3048L1125C
Main Lug Load Center
Same as Main Breaker except as shown

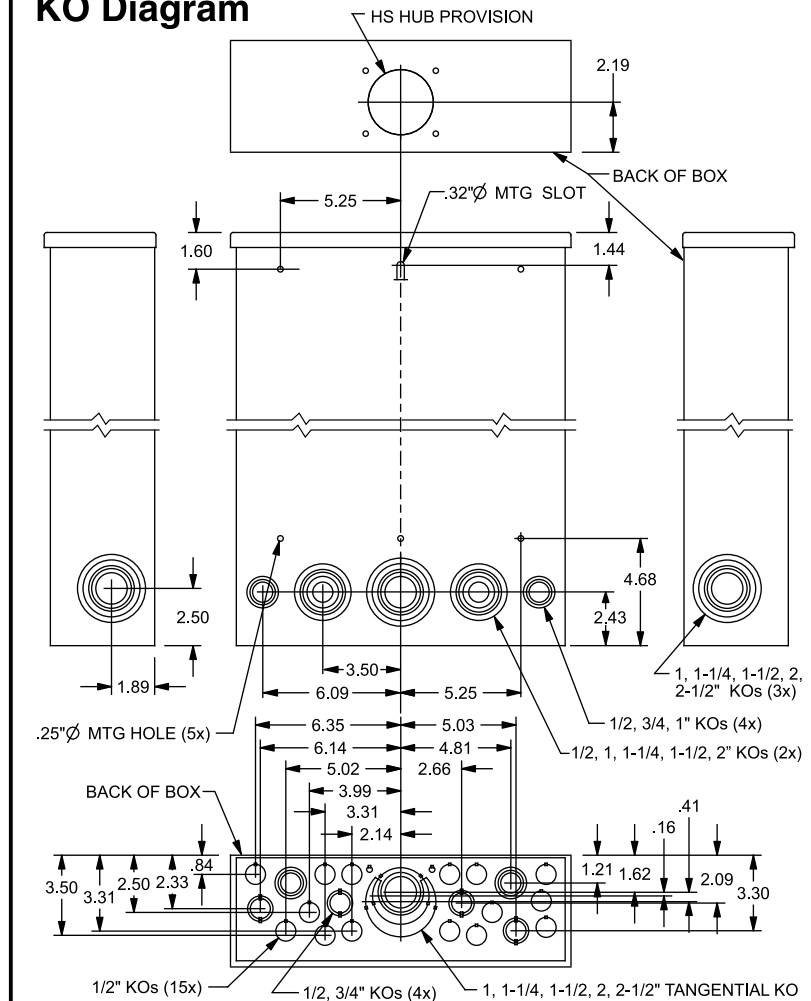


Trim/Door Detail

Main Breaker Load Center Shown



KO Diagram



TERMINAL WIRE SIZES AND TORQUES

USE COPPER OR ALUMINUM 60°/75°C WIRE
SEE BREAKER MARKINGS FOR WIRE SIZE AND TORQUE REQUIREMENTS

| TERMINALS | WIRE | TORQUE |
|---|---------------------------------------|-------------------------------------|
| A, B, G, N1 | 2/0 - 4 AWG | 110 LB-INS |
| NEUTRAL/GROUND BARS (USE TYPE EC2GB or EC3GB GND BAR KIT ACCESSORY) | 10-14 CU/10-12 AL 8 AWG 6-4 AWG | 20 LB-INS 25 LB-INS 35 LB-INS |
| GROUND CONDUCTORS ONLY | (2)or(3) 14 AWG (2) 12-10 AWG | 20 LB-INS 20 LB-INS |
| N2 ECLK2N NEUTRAL LUG | 2/0 - 4 AWG | 110 LB-INS |
| ECLK1-2 NEUTRAL LUG KIT | 2/0 - 4 AWG | 45 LB-INS |
| ECLK2 NEUTRAL LUG KIT | 2/0 - 4 AWG | 135 LB-INS |
| MAIN LUG/MAIN BRKR TO BUS CONNECTION (1/4-20 NUT) | | 45 LB-INS |
| BONDING SCREW | | 45 LB-INS |

ACCESSORIES

REFER TO WIRING DIAGRAM FOR CORRECT ACCESSORY USAGE

| DESCRIPTION | CAT. NO. |
|------------------------------|----------|
| FILLER PLATE, 1" | QF3 |
| BREAKER HOLD-DOWN/BARRIER | ECMBR2 |
| MAIN BREAKER FILLER PLATE | ECMBF125 |
| SUBFEED LUG KIT | ECLK2125 |
| ARC FLASH LABEL | ECAFL |
| STANDBY PWR INTERLOCK KITS: | |
| ECSBPK01, ECSBPK02, ECSBPK11 | |

MAIN LUG / MAIN BREAKER KITS

| DESCRIPTION | CAT. NO. |
|----------------------|----------|
| 100 AMP MAIN BREAKER | MBK100A |
| 125 AMP MAIN BREAKER | MBK125A |
| 100-125 AMP MAIN LUG | ECMLK125 |

CONDUIT HUBS

| TRADE SIZE | CAT. NO. |
|------------|----------|
| 1 INCH | ECHS100 |
| 1-1/4 INCH | ECHS125 |
| 1-1/2 INCH | ECHS150 |
| 2 INCH | ECHS200 |
| 2-1/2 INCH | ECHS250 |

GROUND BAR KITS

| DESCRIPTION | CAT. NO. |
|------------------------------------|----------|
| TYPE EC2GB KIT, 12 SCREWS | EC2GB12 |
| TYPE EC2GB KIT, 12 SCREWS, 2/0 LUG | EC2GB122 |
| TYPE EC2GB KIT, 15 SCREWS | EC2GB15 |
| TYPE EC2GB KIT, 15 SCREWS, 2/0 LUG | EC2GB152 |
| TYPE EC3GB KIT, 21 SCREWS | EC3GB21 |
| TYPE EC3GB KIT, 21 SCREWS, 2/0 LUG | EC3GB212 |
| TYPE EC3GB KIT, 27 SCREWS | EC3GB27 |
| TYPE EC3GB KIT, 27 SCREWS, 2/0 LUG | EC3GB272 |
| TYPE EC3GB KIT, 30 SCREWS | EC3GB30 |
| TYPE EC3GB KIT, 30 SCREWS, 2/0 LUG | EC3GB302 |
| TYPE EC3GB KIT, 35 SCREWS, 2/0 LUG | EC3GB352 |

© 2020 Copyright Siemens Industry, Inc.

SIEMENS
Siemens Industry, Inc.

Load Center

Description: **PN Series, 1 Phase, Outdoor, 125A, 30 Pos, 48 Ckt, Main Breaker/Lug**

KAM 4/24/20 DO NOT SCALE DRAWING Dwg No: **PNW3048B-L1125C**