

SynIron 2

Model number:	BZ113392
---------------	----------

Dimensions:	60" x 30" x 14"	Installation:	Alcove	Material:	Porcelain Enamel
-------------	-----------------	---------------	--------	-----------	------------------



Standard colors:

White

Bone

Biscuit

Standard Features:
Enhanced Backing 5' Porcelain Bath-tub <ul style="list-style-type: none">• Porcelain-finished and encased with premium insulation designed for maximum warmth, minimal noise and ultimate durability.• Full-length sound deadening/support pad for added strength.• Available in left or right hand with slip
Product characteristics:
<ul style="list-style-type: none">• Brilliant porcelain finish• Enhanced backing• Coordinating wall set available
Systems:
Warranty:
Lifetime limited

Certifications

MAAX products adhere to one or more of the following certifications:

UL

ICC
ES
PMG

SynIron 2

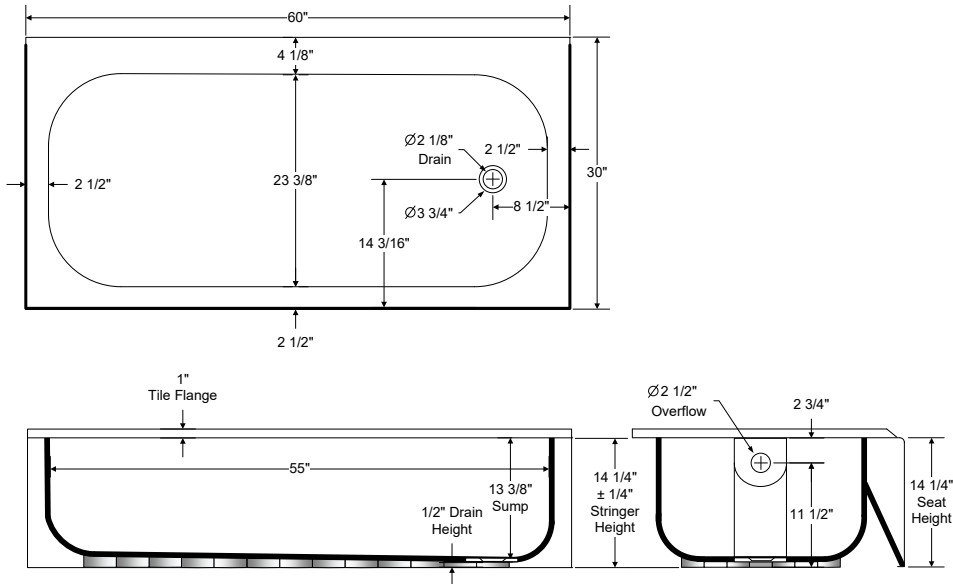
Model number:

BZ113392

Dimensions: 60" x 30" x 14"

Installation: Alcove

Material: Porcelain Enamel



Dimensions:
60 x 30 x 14 1/4 in.
Water capacity:
42 gallons
Weight:
75 lbs
Bathing well:
55 X 23 3/8 in.
Deep sump height:
13 3/8 in.
Deck width:
30 in.
Drain location:
Left
Right

Project:

Contractor:

Representative:

Date:

Tel:

Notes:

