



Catalog Number 70110
UPC Number 60198670110
Description Toggle Switch
DPDT ON-OFF-ON



Features

- Heavy Duty
- DPDT, ON-OFF-ON
- ON-OFF-ON
- 6 Screw Terminals

General

Material: Nickel Plated Zinc
HD Non-Metallic Housing
4 Copper Screw Terminals

Dimension Information

See Submittal Dwg

Specifications

Temperature Rating: N/A
Voltage Rating: 125/277 VAC
Flammability Rating: N/A
Amperage Rating: 20 AMP, 125VAC
10 AMP, 277VAC
Motor Load: 1-1/2 HP, 125/250VAC
InsulationResistance: 500V DC 100 mohm 1 Minute
Contact Resistant: 50 mohm Max
Dielectric Strength: 1500 V AC 1 Minute

Packaging

Bag Qty 10

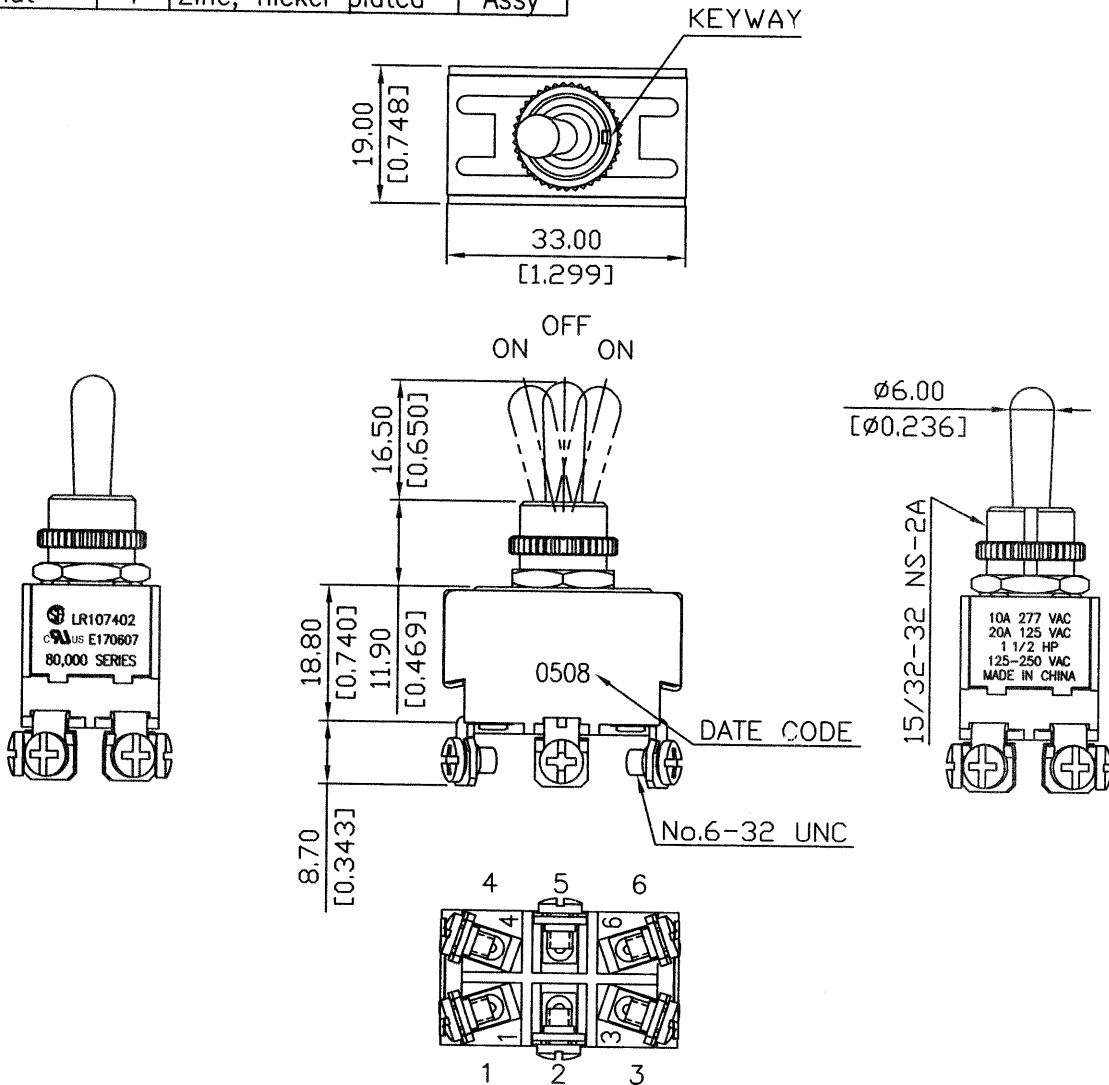
Certifications

UL Yes
CSA Yes
ROHS

Rating	20A 125V, 10A 277V AC 1 1/2HP 125-250V AC	Mounting Hole	Circuit Diagram
Contact Resistance	50m ohm Max.		
Insulation Resistance	DC 500V 100M ohm Min.		
Dielectric Strength	AC 1500V 1 minute		
Switch Function	6P DPDT ON-OFF-ON		
Operation Force	OFF-ON: 1800gf ± 400gf ON-OFF: 900gf ± 300gf		

Part	Unit	Mat'l	Status
Toggle	1	Zinc, nickel plated	Assy
Bushing	1	Zinc, nickel plated	Assy
Hex nut	1	Zinc, nickel plated	Assy
Kunrl nut	1	Zinc, nickel plated	Assy

(1 PCE/ZIPPER BAG+MORRIS LABEL,
10 PCS/POLY BAG + MORRIS LABEL,
500 PCS/CARTON)



Date	Name	Description	REV.	0	NO
05/08/'08	05/08/'08	05/09/'08	Mike Mensler	Model Name	TOGGLE SWITCH
			Queensbury NY	Model No.	
			Morris P/N	70110	Unit mm (inch)