

# DRYCONN®

## WATERPROOF CONNECTORS

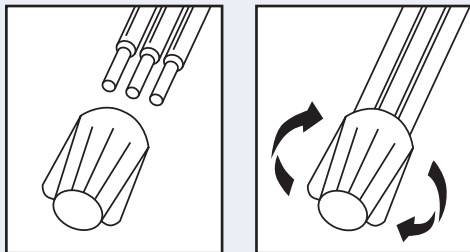
Filled Connectors for Direct Bury Use



### INSTALLATION INSTRUCTIONS

**IMPORTANT:** Turn off power before installing or removing connector. Product to be used in accordance with local and national codes.

1. Strip wires 5/8" (15.9mm).
2. Align any frayed strands or conductors.
3. Pre-twisting unnecessary. Place stripped wires together with ends of insulation even.
4. Twist connector onto wires pushing firmly until hand-tight. Do not over torque.
5. Wipe sealant in and around conductors and connector opening while tightening. Do not reuse.



U.S. Pat. 5,771,578 and additional Patents Pending apply. All other trademarks, U.S. and Foreign Patents apply. All Rights Reserved.

Selected 600V Wire Combinations  
For use with solid and/or stranded combinations.

1-3 #10	1 #10 w/1-3 #14	1 #14 w/3-4 #18
1-4 #12	1 #10 w/1-5 #16	2 #14 w/2-4 #16
2-5 #14	1 #12 w/1-4 #14 or #16	1 #8 w/1 #12
4-6 #16	1 #12 w/2-4 #18	5 #14 w/1 #18
3 #14 w/1-2 #16, #18, #20 or #22	2 #12 w/1-2 #14, #16 or #18	1 #8 w/1-2 #16, #18, #20 or #22
3 #12 w/1 #14		

Contact factory for a complete list of wire combinations at 800.633.0232.

**KING**  
INNOVATION®

### DryConn® King 6 Blue

Catalog #	Selling Unit
10600	Card of 2
10666	Bag of 10
10670	Box of 100

### PRODUCT SPECIFICATIONS & MEASUREMENTS

Max. Voltage: 600V max. building wire  
(1000V max. signs or luminaries)

Connector Size: 2" x 13/16"

Wire Type: Copper/Copper

Wire Range: Min #22/Max #8

Temperature Rating: 105°C (221°F)

Silicone Sealant Temperature: -45°F to 400°F

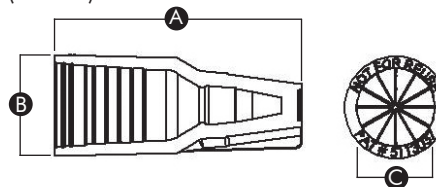
UL Designation: MDB

Measurements (Inches):

A - 2.00

B - 0.81

C - 0.62



- UL 486D Listed as a sealed wire connector system. For use in damp, wet, raintight, direct bury, and submersible locations. Not to be used in continuous submersion applications.

www.kinginnovation.com

(P) 800.633.0232

(F) 636.519.5410

50100-04 REV H 03/15