

*For Residential and Commercial Applications*

Job Name		Engineer / Architect	
Job Location		Wholesaler	
Submittal Date		Contractor	

## TBV12F Full-Port Gas Ball Valve

**Use:** For use with natural, manufactured, mixed, liquefied-petroleum (LP) gas, and LP gas-air mixtures.

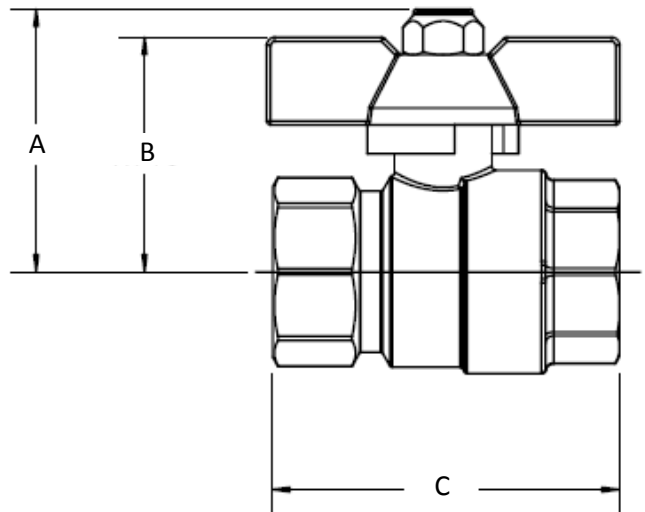
**Note:** The National Fuel Gas Code requires a gas shut-off valve installed upstream, within “easy reach” or 6 feet of the gas appliance

**Design Features:**

- **Heavy duty, forged brass body** eliminates pinhole leaks commonly associated with cast products
- **Blow-out proof stem** is assembled from the inside with double o-rings for reliable performance
- **Right-sized handles** ensure on-off operation even in tight installations
- **Quarter turn operation** for easy on/off flow control
- **Full flow operation.** Full port design provides abundant water flow without obstruction
- **Approved for** indoor/outdoor use

**Operating Specifications:**

**Temperature:** 40°- 180° F  
**Pressure:** 5 PSI maximum



VALVE MATERIAL SPECIFICATIONS	
<b>Body</b>	Forged brass
<b>Retainer</b>	Forged brass
<b>Ball</b>	Brass, chrome plated
<b>Seat</b>	PTFE
<b>Stem</b>	Brass
<b>O-ring</b>	High-temperature rubber
<b>Washer</b>	PTFE
<b>Handle</b>	Aluminum
<b>Screw</b>	Steel, zinc plated

PART SPECIFICATIONS (Inches)			
Model	DIM. A	DIM. B	DIM. C
TBV12F	1.92	1.72	2.54

**Part Listing:**

- TBV12F 3/4" FIP x 3/4" FIP, full port

**Country of Origin:**

Made in Italy

**Listings and Certifications:**

- CSA listed to ANSI Z21.15 / CSA 9.1, ANSI / ASME B16.44 and CGA CR91-002

*This specification and all information contained herein is the confidential and exclusive property of BrassCraft Manufacturing, and shall not be disclosed to others without the written consent of BrassCraft Mfg. This specification must be returned to BrassCraft Mfg. if requested.*

