



GE current
a Daintree company

ProLine™

Every contractor deserves
Fast, Reliable & Trusted Lighting Solutions

Program Offering

The following products were selected in order to meet the fast pace needs of our contractors, while not compromising on Current's quality and safety standards:

Commercial Indoor:

- LRX - Downlights
- LTC - Track
- LPL - Troffers
- WS - Surface Mount

Refit Commercial Indoor

- RPL - Refit Troffer
- RLB - Refit Linear Strip

Industrial

- ALV - Low bay
- ABC - High bay

Outdoor

- EACL - Area Light
- E2SC - Security Light

Trusted Expertise

Current is proud to introduce **ProLine™**, a new portfolio of LED fixtures for those contractors who want to get the job done. Building on a reputation of quality and excellence that dates back to Edison's first electric lightbulb, Current builds our unsurpassed expertise into every product.



*Please refer to the DLC QPL & Energy Star websites for the latest and most complete information.

Readily Available

Tight project deadlines can now be met with our line of products specifically geared towards servicing contractor needs and exceeding requirements defined by builders and architects.

Aligned with our QuickShip Program

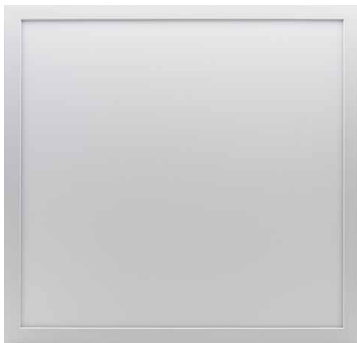


Buy American Act (BAA)



*please refer to product pages for more information

Featured Series



Lumination® Luminaire LPL Series

Ideal for Indoor Commercial
Applications



Lumination® Luminaire LRX Series

Ideal for Indoor Commercial
Applications



ALBEO® Luminaire ABC Series

Ideal for Industrial
Applications



Evolve® Luminaire EACL Series

Ideal for Outdoor
Applications



Indoor Commercial Solutions

Current's line of Indoor Lumination® LED luminaires redefine the art of indoor lighting, providing style, efficiency and performance for a wide variety of commercial and government applications.



Lumination® Fixtures - Troffers

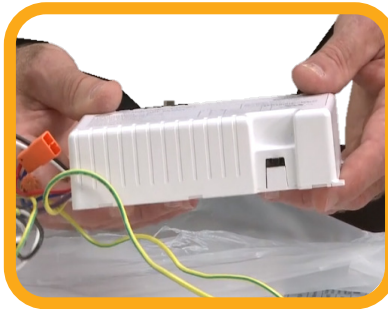


RPL Refit Flat Panel Series

- Simple and quick installation
- Universal fit for 99% of existing fixtures
- Only three parts —two end brackets and a body
- Field switchable lumens
- Attached tether with quick connect lasso, frees hands during install
- Long lead wires allow for installation in any direction
- Quick-connect wiring
- Add-on accessory kits for EMBB, 347v, controls and sensors
- Two units per box to maximize space and minimize tonnage



Quick-attach tether



Field switchable lumens



Long lead wires

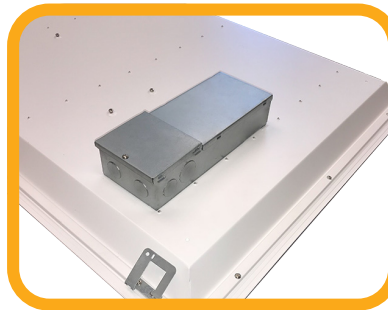


LPL Flat Panel Series

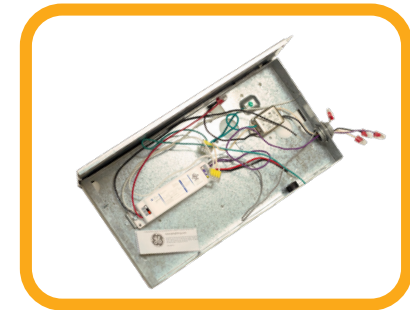
- Field switchable lumens
- Extra large 20-cubic-inch electrical box
- Six knockouts to maximize installation flexibility
- Add-on accessory kits for EMBB, 347v, controls and sensors
- Two units per box to maximize space and minimize tonnage



Field switchable lumens



Extra-large electrical box
with six knockouts



Accessory kits for:
EMBB, 347v, controls & sensors

Lumination® Fixtures - Linear



RLB Linear Strip Refit Series

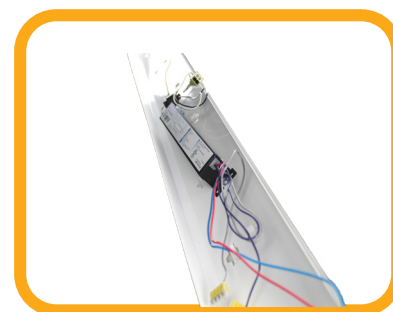
- Low-cost linear strip retrofit fixture
- Fast and easy installation
- Light-weight
- Universal fit
- Quick-connect wiring
- Complete sensor and control options available
- No sharp edges



Optional controls



Light-weight



Plug-and-play
Quick-connect wiring



WS Wrap Surface Mount Series

- Fast and easy installation
- Light-weight
- Standard widths cover existing fixture foot-print (No painting)
- Easily removable and attachable diffuser/lens
- No pixels or dark spots



Easily removable lens



Light-weight



No pixels or dark spots

Lumination® Fixtures - Downlights

LRX Series

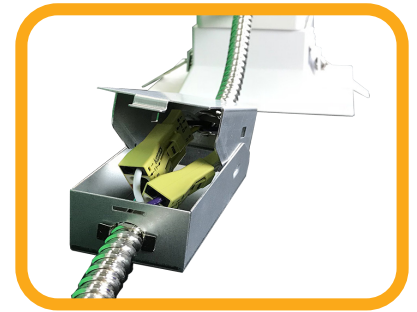
- EZ springs - for a simple and quick installation
- Goof rings - offers a seamless look for any install
- Emergency battery kits
- Switchable lumens - for maximum flexibility
- Quick-connect whip - simple, easy install



Goof rings



Switchable lumens



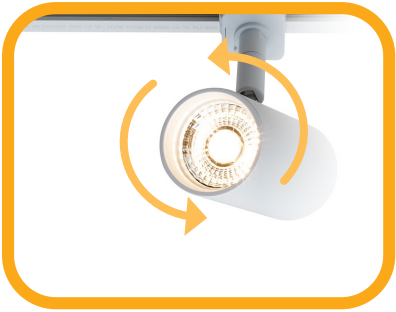
Quick-connect whip

Lumination® Fixtures - Track



LTC Series

- Field-adjustable optics to change beam spreads
- Compatible with Juno, Global or Lightoiler track
- Lightweight and compact for shelf/truck space
- On-board switch
- Small size offers ample light with contemporary aesthetics
- Multiple finishes - black, white, and silver



Field adjustable optics



Multiple finishes



Light-weight



Industrial Solutions

Current's line of Albeo® Industrial LED luminaires are the ideal solution for any indoor industrial lighting application, including assembly lines, manufacturing areas, food processing plants and warehouses.



Albeo® Fixtures - Low Bay

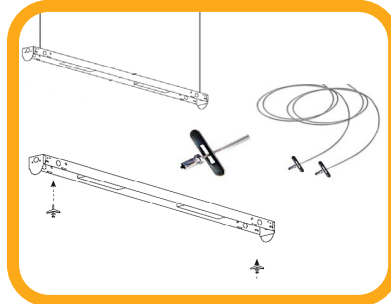


ALV Series

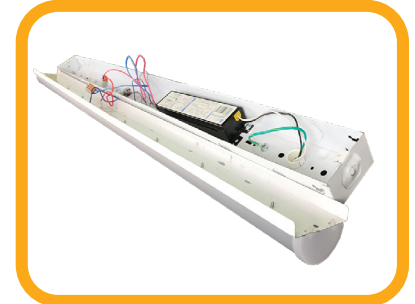
- Low maintenance alternative to LFL
- Easy installation
- Multiple mounting options
- Add-on accessory kits for EMBB, controls and sensors



Ease of installation



Multiple mounting options



Integrated emergency battery back-Up

Albeo® Fixtures - High Bay



ABC Series

- Contractor Grade Fixture
- Compact design for easy installation
- Multiple mounting options
- Designed to replace 175W-450W HID and four-to eight-lamp T5/T8 HIF fixtures



Competitively priced



Contractor focused



Lower maintenance cost



Outdoor Solutions

Current's line of Evolve® Outdoor LED luminaires are the choice for area and site lighting applications due to their quality, unique reflective metal optics, and flat glass design.

Evolve[®] Fixtures



EACL Compact Low Wattage Area & Site Series

- Ideal retrofit solution for Commercial and Retail Exteriors
- Replaces 70W – 400W Metal Halides
- Designed for convenience
- Light-weight
- Universal mounting bracket for fast and easy installations on either round or square poles
- Sensor and control options available



Universal mounting bracket



Light-weight



Same form factor as EALS/EALP



Evolve E2SC Security Light

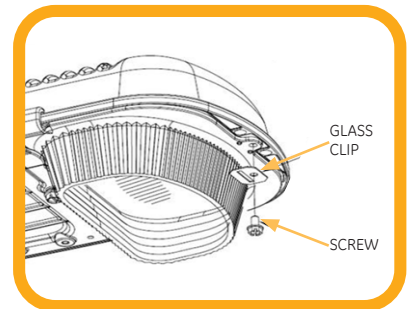
- 3G rated die cast aluminum enclosure
- Lower wattage, higher LPW vs. previous generations
- Replaces 100-250W HPS & Metal Halides
- Type III and Type V distributions
- Lightweight and compact for quick and easy installation
- Available with no refractor, factory installed refractor, or add on field retrofit kit option



Non-refractor versions



Factory installed refractor



Field retrofit kit option



The Current Difference

Our products embody quality and reliability. With over 100 years of experience designing lighting solutions, you can trust our products and the warranties that back them. **GE Current, a Daintree company** builds on a legacy of quality and a tradition of providing reliable, trusted products.

GE current
a Daintree company

© 2020 Current Lighting Solutions, LLC. All rights reserved. GE and the GE monogram are trademarks of the General Electric Company and are used under license. Information provided is subject to change without notice. All values are design or typical values when measured under laboratory conditions.

IND549 (Rev. 01/27/2020)