

For Residential and Commercial Applications

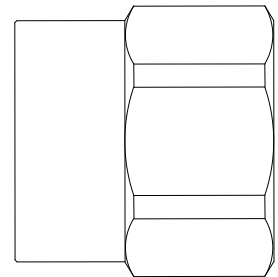
Job Name		Engineer / Architect	
Job Location		Wholesaler	
Submittal Date		Contractor	

HU11 Series Female Iron Pipe x Female Hose Thread Swivel Adapter

Use: For use with residential and commercial grade garden hose. All female hose thread connections require a rubber washer (included) inserted prior to installation

Operating Specifications:

Temperature: -35° to 100° F
Working Pressure: 75 PSI maximum,
intermittent to 150 PSI

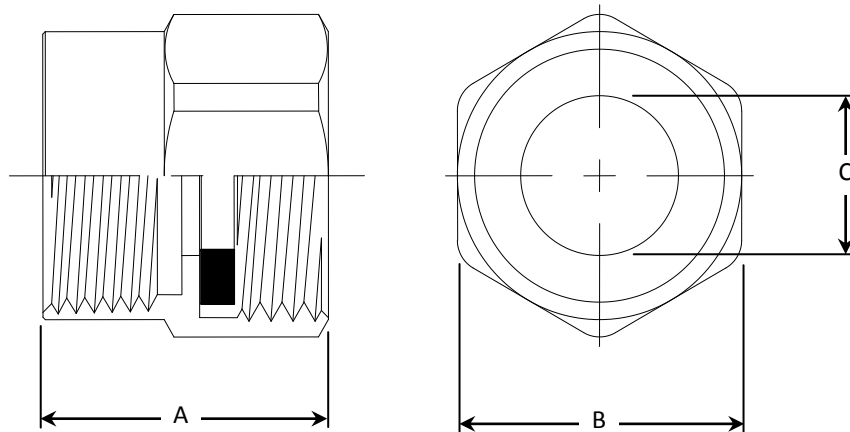


MATERIAL SPECIFICATIONS	
Fitting Body	C36000 brass
Rubber Washer	EPDM

PART DIMENSIONS (Inches)				
Model	Hose Thread	DIM. A	HEX. B	DIA. C
HU11-8-12	3/4-11-1/2	1.13	1-1/8	.739
HU11-12-12	3/4-11-1/2	1.12	1-1/8	.922

Part Listing:

- ☐ HU11-8-12 1/2" F.I.P. x 3/4" Female Hose Thread
- ☐ HU11-8-12 B 1/2" F.I.P. x 3/4" Female Hose Thread, bulk
- ☐ HU11-12-12 3/4" F.I.P. x 3/4" Female Hose Thread
- ☐ HU11-12-12 B 3/4" F.I.P. x 3/4" Female Hose Thread, bulk



This specification and all information contained herein is the confidential and exclusive property of BrassCraft Manufacturing, and shall not be disclosed to others without the written consent of BrassCraft. This specification must be returned to BrassCraft if requested.

BrassCraft®