

# Cody Company, Inc.

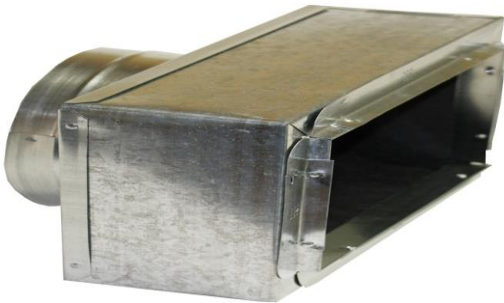
## #640 - #641- #641R - #642 R6 & R8 REGISTER BOOT



#640



#641



#641R



#642

- Constructed of ASTM-A653 CS Type B Galvanized Steel
- Internally lined - Minimum R6 liner, 1.5" thickness
- R6, or R8 Liner Available
- Body is 4" tall
- Top of Collar Hemmed and Beaded.
- Register and collar size are embossed on top.
- #640 - fabricated without flange
- #641- fabricated with 4 corner tabs
- #641R- fabricated with flange for snap on rails
- #642 - fabricated with 24" plate

### Submittal Approval:

Job: \_\_\_\_\_  
Location: \_\_\_\_\_  
Engineer \_\_\_\_\_

PO No: \_\_\_\_\_  
Job No: \_\_\_\_\_  
Representative: \_\_\_\_\_

### APPROVED for CONSTRUCTION

By: \_\_\_\_\_ Title: \_\_\_\_\_ Date: \_\_\_\_\_

4200 I 45, P.O. Box 1320, Ennis, TX 75120 Tel. (972) 875-5884 Fax (972) 875-0308  
7951 East Evans Rd., San Antonio, TX 78266 Tel. (210) 651-5305 Fax (210) 651-5660

[www.codycompany.com](http://www.codycompany.com)