

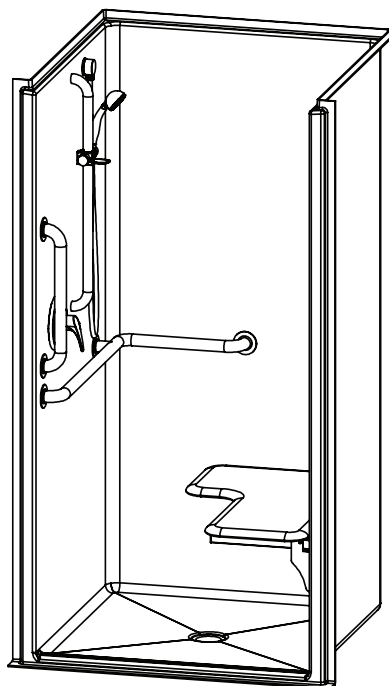
1363BFSD – ACCESSIBLE SHOWERS

inches

Interior: 36 x 36 x 75 ¼

Exterior: 42 ½ x 38 ¼ x 76 ⅞

The 1363BFSD transfer shower features innovative installation design, including an engineered leveled base and improved front threshold. A true time and money saver, our pre-leveled base lets you install directly on a **level** floor. And its front threshold is engineered to keep a constant level without the use of brackets during installation.



AQUATIC ADVANTAGE

- National distribution
- 6 manufacturing facilities
- Private fleet
- Centralized customer service
- Field support

COLOR & TRIM OPTIONS

| Stock | Upgraded |
|--------|----------|
| Almond | Biscuit |
| White | Bone |

**Additional custom colors available.
(Contact Customer Service)

FEATURES

- Pre-leveled base
- AcrylX™ applied acrylic surface
- ¾" skirt
- ½" beveled threshold
- Barrier free when properly installed
- Smooth wall
- Slip-resistant, textured bottom
- Center drain
- Lifetime limited warranty

OPTIONS

- RH or LH fixture wall
- Grab bars
- Fold-up seat
- Hand-held shower assembly with slide bar
- Pressure balancing mixing valve
- Soap dish
- Curtain rod and/ or shower curtain

CODE COMPLIANCE

- ADA
- FHA
- ICC/ANSI A117.1
- HUD UM73a
- IAPMO Z124-2011
- CAN/CSA-B651-04
- CSA-B45-11

**Code compliant when fully equipped and installed according to guidelines.



Aquatic products may be
specified as Lasco Bathware.

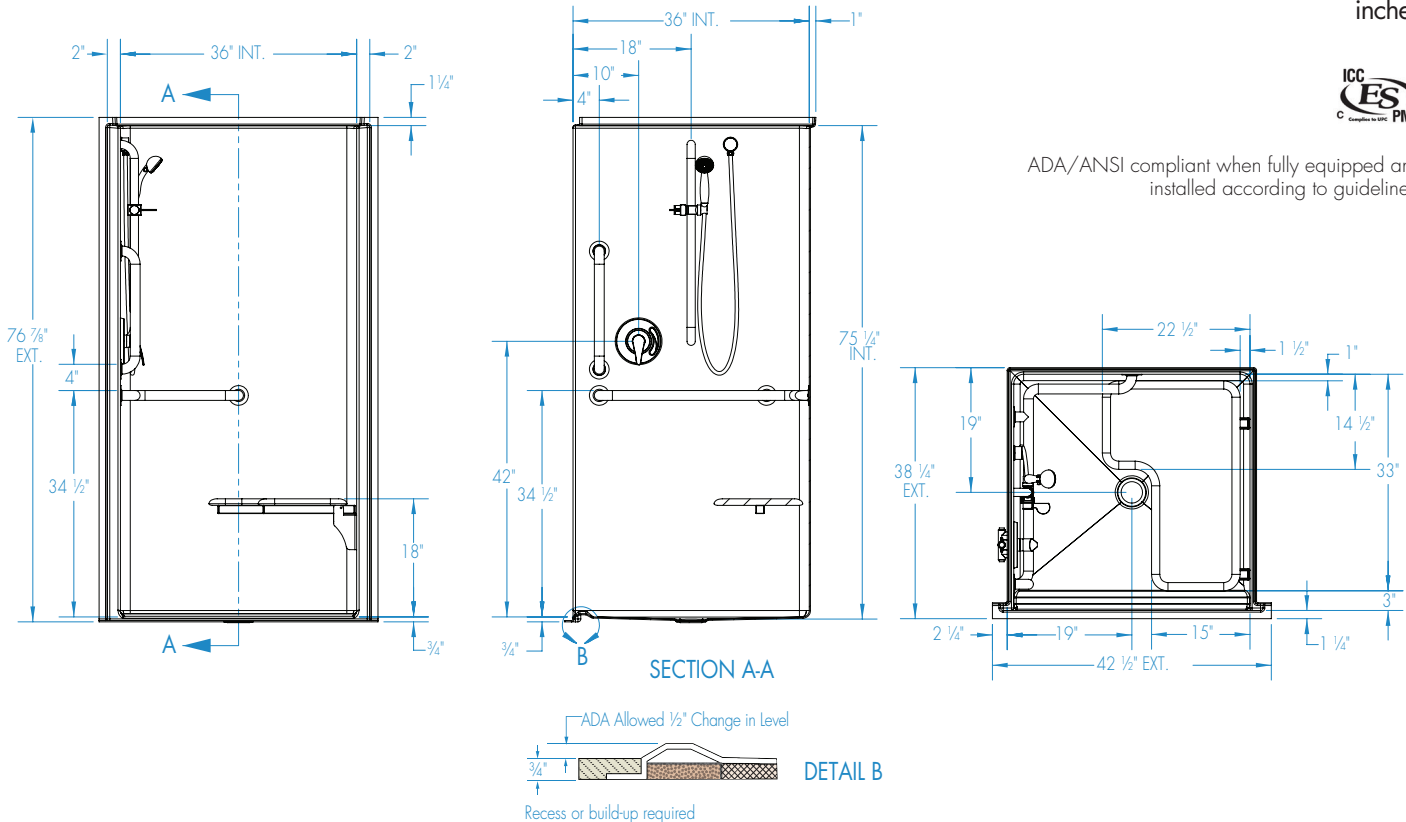


1363BFSD

Interior: 36 x 36 x 75 ¼
Exterior: 42 ½ x 38 ¼ x 76 ⅞
inches



ADA/ANSI compliant when fully equipped and installed according to guidelines.



FEATURES

Dimensional Tolerance $\pm \frac{3}{8}$ ". Dimensions needed for site preparation should be measured from the unit. Aquatic assumes no responsibility for preparatory work.

| Type and Model # | Material | Wall Finish | Pieces | Drain | Dam/Skirt Height | Net Wt. lbs | Pkg. Wt. lbs |
|------------------|----------|-------------|--------|--------|---------------------------------|-------------|--------------|
| Shower #1363BFSD | AcrylX™ | Smooth | 1 | Center | ¾" skirt, ½" interior threshold | 140 | 150 |

DIMENSIONS

| Specifications | inches |
|---------------------------------|-------------|
| Width: Ext. / Int. | 42 ½ / 36 |
| Depth: Ext. / Int. | 38 ¼ / 36 |
| Height: Ext. / Int. | 76 ⅞ / 75 ¼ |
| Enclosure Opening: | 36 |
| Skirt Height: | ¾ |
| Drain Rough-In (from Back Wall) | 19 |
| Drain Rough-In (from Side Wall) | 19 |

FRAMING DIMENSIONS inches

| Type | D Depth | W Width | H Height | A | B | C |
|--------|---------|---------|----------|---------|----|----|
| Alcove | 35 ¾ | 38 ⅞ | — | Box Out | 19 | 19 |

