



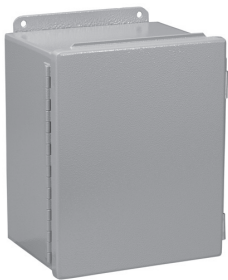
INDUSTRIAL ELECTRICAL ENCLOSURES

IN-STOCK



independent • in-stock • on-time

Unity Manufacturing is now stocking the most in-demand industrial enclosures to meet your immediate needs.



TYPE 12 ENCLOSURES

- Stock inventory sizes from 6x6x4 to 24x24x8
- Boxes are provided with a continuous hinge and external screw clamps
- Manufactured from code gauge, paint grip galvanized steel, ANSI 61 gray



TYPE 4X ENCLOSURES

- Stock inventory sizes from 6x6x4 to 24x24x8
- Boxes are provided with a continuous hinge and external screw clamps
- Manufactured from code gauge, 304 Stainless Steel



[SEE FULL LIST OF IN-STOCK ENCLOSURES](#) →

ON-TIME



quality • fast response • service

Unity has partnered with independent manufacturer C&I to bring you premier quality **custom** and **made-to-order** industrial enclosures.

- Type 4, 4x and 12 wireways
- Powder coated, 304SS and 316SS options
- Custom size enclosures
- Fast turnaround



Call Unity at 800-657-6100 or contact your representative

Industrial Electrical Enclosures In-stock



TYPE 12 JIC ENCLOSURES

CATALOG NUMBER	SIZE (W"xH"xD")	SPECIFICATIONS:
UI-664JHT12	6X6X4 N12 JIC	<ul style="list-style-type: none"> Manufactured from code gauge, paint grip galvanized steel Continuous hinge Oil resistant gasket External screw clamps on one side Seam welded External mounting brackets Studs included for optional back panel
UI-884JHT12	8X8X4 N12 JIC	
UI-10106JHT12	10X10X6 N12 JIC	
UI-1084JHT12	10X8X4 N12 JIC	
UI-1086JHT12	10X8X6 N12 JIC	
UI-12105JHT12	12X10X5 N12 JIC	
UI-12106JHT12	12X10X6 N12 JIC	
UI-12108JHT12	12X10X8 N12 JIC	
UI-12126JHT12	12X12X6 N12 JIC	
UI-14126JHT12	14X12X6 N12 JIC	
UI-14128JHT12	14X12X8 N12 JIC	
UI-16146JHT12	16X14X6 N12 JIC	
UI-16148JHT12	16X14X8 N12 JIC	

FINISH

- ANSI 61 gray polyester powdercoating



TYPE 12 HINGED COVER ENCLOSURES

CATALOG NUMBER	SIZE (W"xH"xD")	SPECIFICATIONS:
UI-20166T12	20X16X6 N12 HC	<ul style="list-style-type: none"> Manufactured from code gauge, paint grip galvanized steel Continuous hinge Oil resistant gasket External screw clamps on one side Seam welded External mounting brackets Studs included for optional back panel Rolled lip on 3 sides of the cover and all sides of the enclosure opening Padlockable
UI-20208T12	20X20X8 N12 HC	
UI-24208T12	24X20X8 N12 HC	
UI-242410T12	24X24X10 N12 HC	
UI-242412T12	24X24X12 N12 HC	
UI-24246T12	24X24X6 N12 HC	
UI-24248T12	24X24X8 N12 HC	

FINISH

- ANSI 61 gray polyester powdercoating



TYPE 4X JIC ENCLOSURE

CATALOG NUMBER	SIZE (W"xH"xD")	SPECIFICATIONS:
UI-664SJHT4X	6X6X4 N4X JIC	<ul style="list-style-type: none"> Manufactured from code gauge, 304 Stainless Steel Continuous hinge Oil resistant gasket External screw clamps on three sides Seam welded External mounting brackets Studs included for optional back panel
UI-864JHT4X	8X6X4 N4X JIC	
UI-884JHT4X	8X8X4 N4X JIC	
UI-1084SJHT4X	10X8X4 N4X JIC	
UI-12106JHT4X	12X10X6 N4X JIC	
UI-12126JHT4X	12X12X6 N4X JIC	
UI-14126SJHT4X	14X12X6 N4X JIC	
UI-16146SJHT4X	16X14X6 N4X JIC	

FINISH

- 304 Stainless Steel



TYPE 4X HINGED COVER ENCLOSURE

CATALOG NUMBER	SIZE (W"xH"xD")	SPECIFICATIONS:
UI-20168ST4X	20X16X8 N4X HC	<ul style="list-style-type: none"> Manufactured from code gauge, 304 Stainless Steel Continuous hinge Oil resistant gasket External screw clamps on three sides Seam welded External mounting brackets Studs included for optional back panel Rolled lip on 3 sides of the cover and all sides of the enclosure opening Padlockable
UI-20206ST4X	20X20X6 N4X HC	
UI-242412ST4X	24X24X12 N4X HC	
UI-24248ST4X	24X24X8 N4X HC	

FINISH

- 304 Stainless Steel



Call Unity at 800-657-6100 or contact your representative