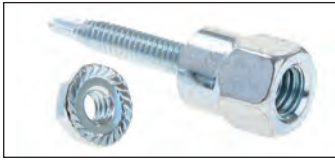


# Fixture Hanging Accessories Vertigo® Threaded Rod Anchoring System

*Saves money and time when attaching threaded rod to wood and metal.*



- No more predrilling metal or wood. Faster than beam clamps
- Easier to install than power-actuated stud pin and coupling nut assemblies
- Replaces coach screws, hanger bolts, swing connectors and ceiling flanges
- Hang and support applications like fire sprinklers, lighting, and HVAC/R systems
- Anchors self-drill in metal up to .250"

### Metal Applications:

Tapped to accept 1/4-20 Threads  
Tapped to accept 3/8-16 Threads

### Wood Applications:

Tapped to accept 1/4-20 Threads  
Tapped to accept 3/8-16 Threads

### Recessed Drive Socket - It Backs Off:

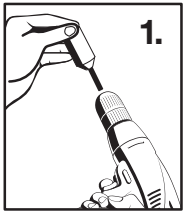
Install tool for wood and metal Vertigo® anchors

**We do not recommend using regular socket drive products to install Vertigo®.**

CATALOG NUMBER*	UPC NUMBER	SIZE/ DESCRIPTION	STD PAK <sup>◇</sup> PCS/PKG	PKG STYLE*	CASE QTY	WEIGHT/ PKG (lbs.)
HMA1420J	78103560040	1/4-20 Metal Drilling	50	Jar	24 Jars	3.70
HMA3816J	78103560041	3/8-16 Metal Drilling	50	Jar	24 Jars	4.03
HMA1420WJ	78103560042	1/4-20 Wood Drilling	50	Jar	12 Jars	4.13
HMA3816WJ	78103560043	3/8-16 Wood Drilling	50	Jar	12 Jars	4.49
HMDB-5/8	78103520046	Recessed Drive Socket	1	Bag	N/A	0.11

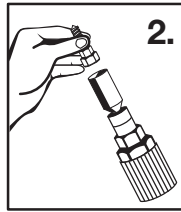


## Installation Instruction (Metal & Wood)



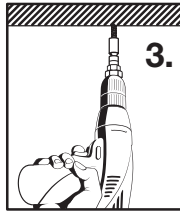
1.

Insert Vertigo® recessed drive socket into screw gun.



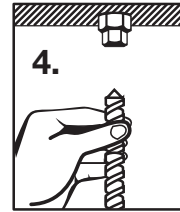
2.

Insert appropriate Vertigo® anchor into drive socket.



3.

Position the self-drilling point of the anchor at the intended point of installation. The drive socket's SafetySet feature will set the anchor flush and then automatically disengage to prevent overdrilling.



4.

The Vertigo® anchor is now installed and ready to accept a threaded rod or component.

## Product Performance & Technical Data

### Pullout Testing in Steel

	(1/8)	(3/16)	(1/4)
Steel Thickness	.109"	.123"	.155"
Avg. Pullout in lbs.	2068	2180	3188

### Pullout Testing in Wood

	(1/8)	(3/16)	(1/4)
Specific Gravity	.4302	.4730	
Embedment Depth	1 3/4"	2 1/4"	
Avg. Pullout in lbs.	1384	2090	

### IMPORTANT:

**Contact Selecta for Vertigo® Concrete Applications.**

\* Jar version part number shown. Box and Bulk versions may be available. Contact Selecta for availability, part number and pricing.  
<sup>◇</sup> Other quantities per individual package may be available. Contact Selecta for details.