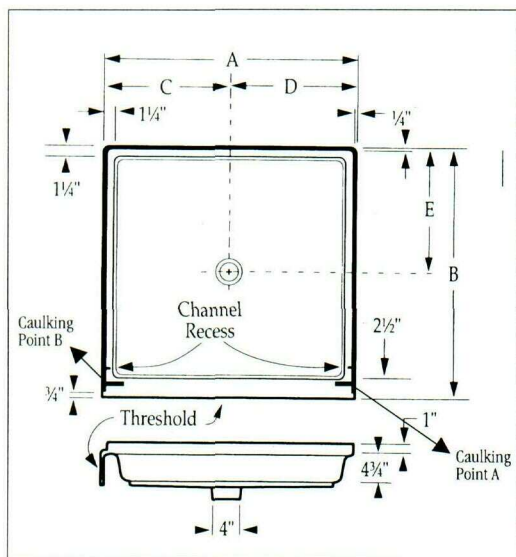




One piece, single threshold model for recessed installation. Features 1" flange on three remaining sides. Integral drain with Wedge-Lok® Seal.



Model	A	B	C	D	E	WT.
3232-1 *	32"	32"	16"	16"	16"	45
3434-1	34"	34"	17"	17"	17"	51
3634-1 **	35½"	33½"	17½"	17¾"	16"	54
3636-1	36"	36"	18"	18"	18"	56
3642-1	36"	42"	18"	18"	21"	63
4234-1	42"	34"	21"	21"	17"	59
4242-1	42"	42"	21"	21"	21"	68
4832-1	48"	32"	24"	24"	16"	65
4834-1	48"	34"	24"	24"	17"	70
5434-1	54"	34"	27"	27"	17"	80
6032-1	60"	32"	30"	30"	16"	82
6034-1	60"	34"	30"	30"	17"	90

* Does not meet I.A.P.M.O. minimum size requirements. Check local codes.

** Integral drain not available with this model (3634-1). Supplied with 101 PNC non-caulk drain.

Approvals and Standards:

I.A.P.M.O. International Association of Plumbing and Mechanical Officials
File No. 0687.

ANSI American National Standards Institute - Specifications Z-124.2.

HUD/FHA National Specifications UM-73.

CSA TEST Warnock Hersey Listed: CAN / CSA - B45.0 - CAN / CSA - B45.5



FLORESTONE SAFLOR® RECESS SHOWER RECEPTORS

Architectural Specifications

Furnish and install Saflor® Shower Receptor manufactured by Florestone Products Co. (Model Number - see table.) The receptor shall be furnished with slip-resistant design that does not interfere with the flow of water nor trap it. Receptor to have integral molded drain (**Note:** 3634-1 not available with integral drain or as a Corner Model). Receptor to have not less than 1" flange on remaining sides. Receptor to be stain, and fungus resistant. Color to be off-white (unless other specified) and will be resistant to fading and abrasion. Model shall conform to ANSI-Z-124.2.

SAFLOR® Options and Accessories

Bone - *Special Order Color*

Josam Jiffy-Joint™

Wedge-Lok® Seal

Strainer, Brass

Strainer, Chrome

Strainer, Plastic

Repair Kit



FLORESTONE PRODUCTS CO., INC.

2851 Falcon Dr • Madera, CA 93637-9287

Tel: 559-661-4171 • Fax: 559-661-2070

www.florestone.com

THREE YEAR LIMITED WARRANTY

Florestone molded shower receptors, terrazzo shower receptors, molded mop receptors, utility sinks, terrazzo mop receptors, fiberglass bathing units and bath/shower combinations, and acrylic luxury baths are guaranteed to the purchaser-for-use to be free from defective workmanship and material for three (3) years from the date of purchase, when the unit is installed according to the installation instructions and local codes and ordinances.

Florestone Whirlpool Systems are guaranteed to the purchaser-for-use to be free from defective workmanship and material for one (1) year from date of purchase, when the unit is installed according to installation instructions and local codes and ordinances. Any alteration to the system or relocation of the pump will void all warranties.

Any unit reported to Florestone, and found to be defective in workmanship and material upon inspection by an authorized Florestone representative will be repaired or exchanged at Florestone's option without charge.

This warranty is non-transferable and shall be voided if the unit is removed from its place of initial installation. This warranty *does not* cover shipping damage. Such damage is the responsibility of the carrier. The purchaser must open the box and inspect the unit for damage when it is delivered and, if damage is discovered, should file a freight claim directly with the carrier.

Cost of repair or replacement for damage during shipment shall be paid by the purchaser, who must look to the carrier for reimbursement. Florestone will not be responsible for labor, transportation or other costs incurred in the removal and/or reinstallation of the defective unit. Florestone will not be responsible for any incidental or consequential damage arising from any cause what so ever, nor for damage to the unit produced by outside causes, including but not limited to the following: improper installation, use of abrasive cleaners, lightning, flood, fire, careless handling, or lack of cleaning and maintenance of the caulking or an act of God.

There are no warranties applicable to Florestone products except as expressly stated herein or as implied in applicable state and federal laws. Implied warranties of merchantability and fitness for a particular purpose, to the extent that they are applicable, are limited to three (3) years from the date of purchase.

Florestone Fiberglass Units are manufactured of high quality fiberglass-reinforced polyester resins and conform to the standards set forth in USAS Z 124.1-1987.

NOTICE TO END USERS

To maintain your limited warranty rights, Florestone units should be kept clean and the caulking around the units should be regularly maintained by the end user.

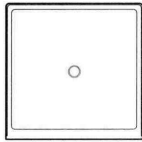
Modification/alteration to a Florestone product after it leaves the factory will void all warranties.

Because of impurities and the use of many additives in water, Florestone will not be responsible for any color change or tarnishing of plating on chrome, brass and gold jets.

Please check unit dimensions before roughing in. Dimensions are subject to change without notice. It is the responsibility of the installer to verify dimensions prior to installation. Florestone will not be responsible for any charges incurred due to unit dimension variance.

FLORESTONE SHOWER RECEPTORS - SAFLOR® MOLDED

RECESS



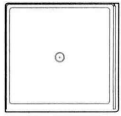
MODEL	UNIT PRICE	SHIPPING WEIGHT
3232-1 *	117.80	45
3434-1	128.60	51
3634-1 *	135.80	54
3636-1	134.40	56
3642-1	162.20	63
4234-1	155.80	59
4242-1	164.60	74
4832-1	158.20	65
4834-1	160.60	70
5434-1	198.00	80
6032-1	206.20	82
6034-1	205.80	90

Receptors supplied with Wedge-Lok® Seal and plastic grid.

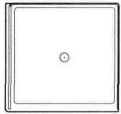
** 3634-1 not available with Wedge-Lok Integral Drain. Supplied with 101-PNC drain.*

* May not meet minimum size requirements. Check with local Building Department before ordering.

CORNER



Right Hand



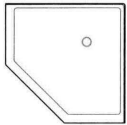
Left Hand

MODEL	UNIT PRICE	SHIPPING WEIGHT
3232-2*	144.80	50
3434-2	157.60	54
3636-2	160.60	59
4234-2	184.80	64
4832-2	187.20	70
4834-2	191.00	75
5434-2	222.80	84
6032-2	231.20	86
6034-2	234.80	96

Specify RH-LH except 3636-2. Receptors supplied with Wedge-Lok® Seal and plastic grid.

* May not meet minimum size requirements. Check with local Building Department before ordering.

NEO ANGLE



MODEL	UNIT PRICE	SHIPPING WEIGHT
37-1/2 NEO	147.80	50

Receptors supplied with Wedge-Lok® Seal and plastic grid.

Optional Color -Bone
(Add to above prices)

PER UNIT
40.00

ACCESSORIES

MODEL	UNIT PRICE	
JOSAM JIFFY JOINT	6.00	
WEDGE-LOK SEAL	4.00	
STRAINER, BRASS	14.00	
STRAINER, CHROME	4.00	
STRAINER, PLASTIC	3.00	
REPAIR KIT	20.00	PLUS-UPS-AND HAZARDOUS SHIPPING FEE

APPROVALS & STANDARDS

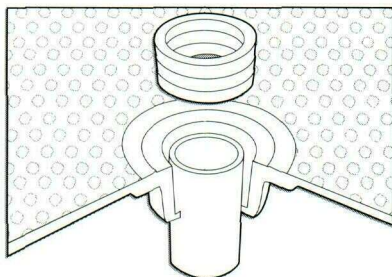


Florestone Molded Shower Receptors meet or exceed the requirements of the

Uniform Plumbing Code (Listed No. 0687), FHA, HUD Specifications UM-73, ANSI Standard Z-124.2. They comply with the National Fire Protection Association Code. ASTM (American Society of Testing and Materials) — E-162.75, E-84, D-635. CSA Test Warnock-Hersey Listed: CSN/CSA-B45.0, CAN/CSA-B45.5.

MANY COLORS AND OPTIONS.

White is standard for Molded Shower Receptors, with Bone available as an option. Acrylic shower receptors can be ordered in white or bone as standard, with many other colors optional at extra cost. For a list of available acrylic colors, see Options and Colors, Florestone Acrylic Custom Baths.



EXCLUSIVE WEDGE-LOK® INTEGRAL SEAL

Florestone Molded Shower Receptors come with an integral drain molded into the receptor, eliminating the need for a separate drain. The 2" I.P.S. Wedge-Lok® Seal will connect easily to plastic and steel drains. Florestone Acrylic Receptors have a separate drain.

**Note on Code Compliance:*

Some Florestone shower receptors do not meet IAPMO minimum size requirements. Please check with your local city and county building departments for specific regulations or restrictions before ordering.

FLORESTONE

SHOWER RECEPTORS

QUALITY YOU CAN TRUST.

Since 1947, Florestone Products Co. has built a reputation based on product quality, ease of installation and reliability. Today we serve contractors, engineers, specifiers, architects and builders with products, service and distribution nationwide. The manufacturing methods, craftsmanship and attention to detail of Florestone Shower Receptors are second to none.

WIDE VARIETY OF SIZES AND STYLES.

You have a wide choice of models, sizes, and styles. Many models are available in recess, corner, and neo-angle styles. You can choose among molded, acrylic or terrazzo materials and a number of color options.

ONE PIECE CONSTRUCTION

Molded under pressures up to 100,000 pounds per square foot, Florestone Molded Shower Receptors are designed not to crack or leak under normal use.



FLORESTONE

Quality shower and bath products since 1947.

FLORESTONE PRODUCTS CO., INC.

2851 Falcon Dr • Madera, CA 93637-9287

Tel: 559-661-4171 • Fax: 559-661-2070

www.florestone.com