



**WORLDWIDE ELECTRIC MOTOR DATA SHEET**

**PEWWE150-18-445T**



HORSEPOWER	150		
RPM / POLES	1800 / 4		
VOLTAGE / PHASE	230 / 460 V / 3		
FRAME	445T		
ENCLOSURE / DEGREE OF PROTECTION	TEFC / IP55		
FREQUENCY	60 HZ Suitable For 50 HZ Operation With 1.0 SF		
FULL LOAD SPEED	1790 RPM		
SERVICE FACTOR	1.25		
INSULATION CLASS	F		
FULL LOAD AMPS; 230 / 460	345 / 172 A (Usable On 208V At 381 A)		
LOCKED ROTOR AMPS (STARTING); 230 / 460	2170 / 1085 A		
NO LOAD CURRENT	113 / 56.5 A		
NEMA CODE LETTER	G		
EFFICIENCY / POWER FACTOR	<u>LOAD</u>	<u>EFF.</u>	<u>P.F.</u>
	100 %	95.8%	0.85
	75 %	96.1%	0.84
DUTY CYCLE	50 %	95.8%	0.76
	S1 / Continuous		
TORQUE	<u>FULL LOAD</u>	<u>LRT</u>	<u>BDT</u>
	440 lb.ft.	160%	240%
SLIP	0.55 %		
NEMA DESIGN	B		
MOMENT OF INERTIA	48.5 lb.ft. <sup>2</sup>		
MAX. TIME LOCKED ROTOR (Hot)	12 Seconds		
SOUND PRESSURE LEVEL	77 dB (A)		
MAX. AMBIENT TEMPERATURE	40° C		
MAX. ELEVATION	3300 Ft.		
TEMPERATURE RISE (At Full Load)	80° C		
DE BEARING	NU318 C3		
ODE BEARING	6313 C3		
REGREASING INT. - DE BEARING	1500 Hours		
REGREASING INT. - ODE BEARING	3000 Hours		
GREASE TYPE	SKF LGHP 2		
MOUNTING	F1 (F2 Suitable)		
ROTATION	Bi-Directional		
SHAFT MATERIAL	1045 Carbon Steel		
INVERTER RATING	10:1 CT / 20:1 VT PWM Type		
CONNECTION DIAGRAM	230 / 460 V - 12 Lead Δ		
AREA CLASSIFICATION	Class I, Division 2, Groups A, B, C, D		
APPROXIMATE WEIGHT	1625 lbs.		

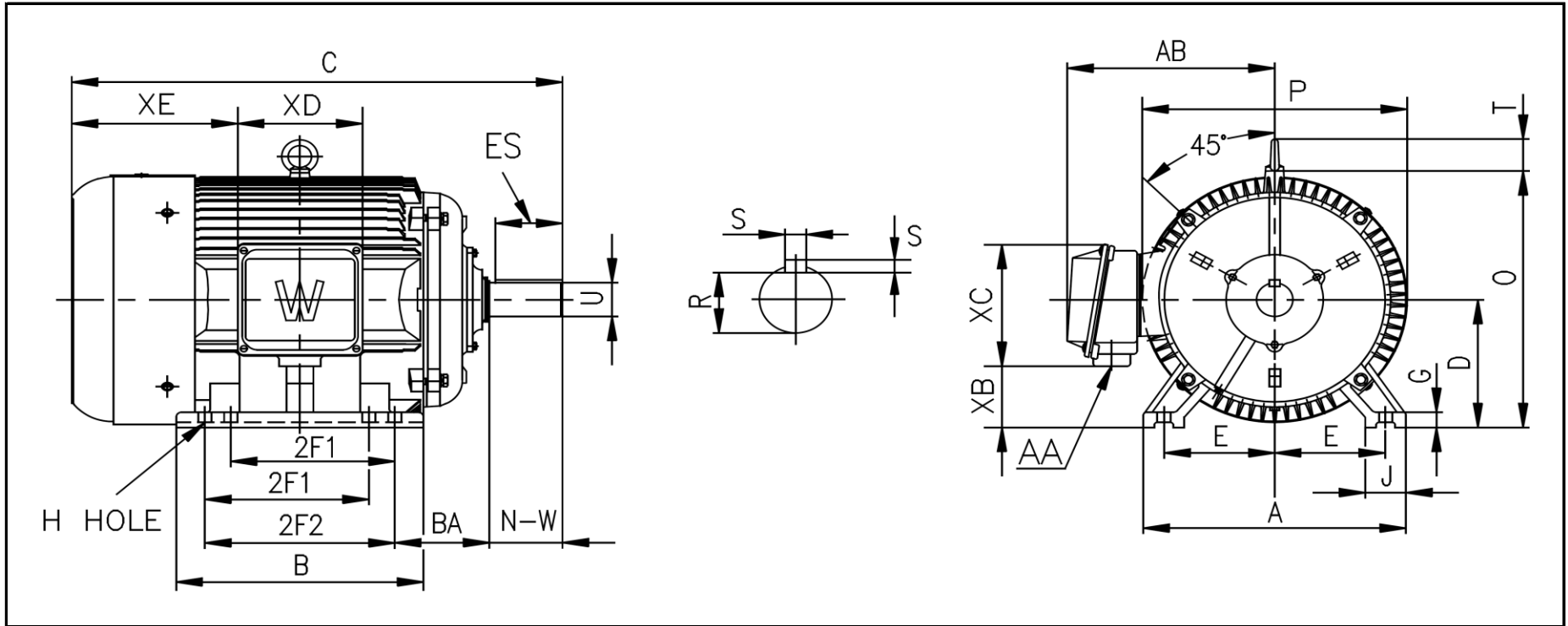


**CC006A**



# WORLDWIDE ELECTRIC MOTOR DRAWING

## PEWWE-445T



DIMENSIONS - INCHES

MOUNTING					A	B	C	D	G	J	P	O	T	AB
E	2F1	2F2	H	BA										
9	14.5	16.5	0.81	7.5	22	20.5	44.5	11	1.38	3.35	23.43	22.97	3.46	19.41

KEY		KEYSET	SHAFT		TERMINAL BOX				
S	ES	R	N-W	U	AA	XB	XC	XD	XE
0.875	6.91	2.88	8.5	3.375	2 x 3	5.67	11.73	11.34	14.37