



A **GPK PRODUCTS** Company



PRODUCTS FOR THE PIPING INDUSTRY

Couplings

Indiana Seal

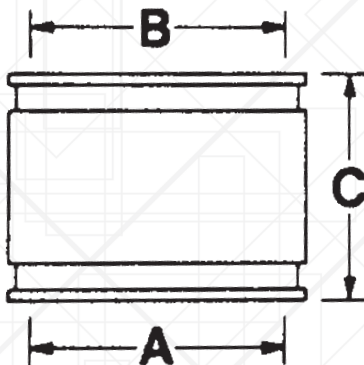
manufactures a complete line of couplings for clay, cast iron, ductile iron, concrete and plastic pipe, in sizes from 1-1/4" up to 30". Constructed of tough yet pliable PVC, these couplings are impervious to normal sewer gases, chemicals, fungus growth, various soil conditions, the menace of roots and all other associated in-ground hazards. Each coupling is produced and inspected under strict quality control standards to assure the highest degree of integrity at any junction in the line.



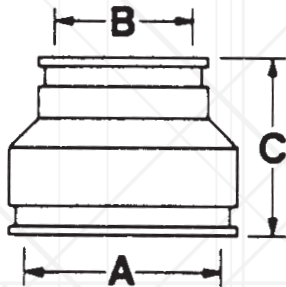
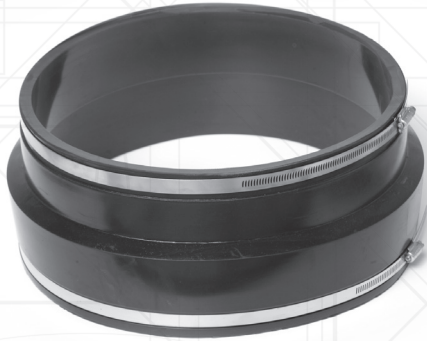
101 Clay to Clay

Part No.	Pipe Size	A	B	C
101-44	4x4	5.30	5.30	4.00
*101-54	5x4	6.40	5.30	6.25
101-55	5x5	6.40	6.40	6.00
101-64	6x4	7.50	5.30	5.75
101-64EC	6x4	7.50	5.30	6.00
101-65	6x5	7.50	6.40	5.75
101-66	6x6	7.50	7.50	5.88
101-66W	6x6	7.80	7.80	6.00
*101-84	8x4	9.75	5.30	5.88
*101-85	8x5	9.75	6.40	5.63
101-86	8x6	9.75	7.50	5.75
101-88	8x8	9.75	9.75	5.88
101-88W	8x8	10.25	10.25	6.12
*101-104	10x4	11.95	5.30	6.50
*101-106	10x6	11.95	7.50	6.50
*101-108	10x8	11.95	9.75	6.63
101-1010	10x10	11.95	11.95	6.00
*101-128	12x8	14.50	9.75	6.25
101-1210	12x10	15.30	12.60	6.50
101-1212	12x12	14.50	14.50	6.38
101-1515	15x15	18.25	18.25	6.63
101-1818	18x18	21.50	21.50	8.63
101-2121	21x21	25.75	25.75	9.00
101-2424	24x24	29.00	29.00	9.00
101-2727	27x27	32.10	32.10	9.00
101-3030	30x30	36.00	36.00	9.00

*Supplied with reducer
W=Western Clay



Couplings

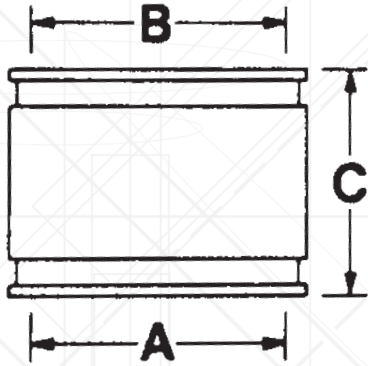


102 Clay to Cast Iron or Plastic

Part No.	Pipe Size	A	B	C
102-43	4x3	5.30	3.40	4.00
102-44	4x4	5.30	4.40	4.00
102-46	4x6	5.30	6.40	5.88
*102-48	4x8	5.30	8.55	5.88
*102-48EC	4x8	5.30	8.55	5.75
*102-53	5x3	6.40	3.40	6.00
*102-54	5x4	6.40	4.40	5.63
*102-55	5x5	6.40	5.50	4.75
*102-56	5x6	6.40	6.40	6.00
*102-63	6x3	7.50	3.40	5.80
102-64	6x4	7.50	4.40	5.50
102-64EC	6x4	7.50	4.40	6.09
102-65	6x5	7.50	5.50	5.75
102-66	6x6	7.50	6.40	5.75
102-66I	6x6	7.50	6.62	5.75
102-66W	6x6	7.80	6.40	5.88
*102-66ECP	6x6	7.50	6.28	6.13
*102-68	6x8	7.50	8.55	6.00
*102-84	8x4	9.75	4.40	5.88
*102-84EC	8x4	9.75	4.40	5.88
102-86	8x6	9.75	6.40	5.63
*102-86EC	8x6	9.75	6.40	6.13
102-88	8x8	9.75	8.55	5.75
102-88W	8x8	10.25	8.55	5.87
*102-810	8x10	9.75	10.60	5.88
*102-104	10x4	11.95	4.40	6.25
*102-106	10x6	11.95	6.40	6.50
102-108	10x8	11.95	8.55	6.25
102-1010	10x10	11.95	10.60	6.38
*102-128	12x8	14.50	8.55	6.25
102-1210	12x10	14.50	10.60	6.00
102-1212	12x12	14.50	12.60	6.30
*102-158	15x8	18.25	8.55	7.50
102-1512	15x12	18.25	12.60	6.50
102-1515	15x15	18.25	15.30	7.00
*102-1812	18x12	21.50	12.60	9.00
102-1815	18x15	21.50	15.30	9.00
102-1818	18x18	21.50	18.70	9.00
102-2121	21x21	25.25	22.05	8.38
102-2424	24x24	28.50	24.80	8.12
102-2727	27x27	32.50	28.00	8.50
102-3030	30x30	36.00	32.00	9.15
*102-3636	36x36	42.16	38.30	9.15

*Supplied with reducer W=Western Clay EC=Eccentric I = Iron Pipe Size

Couplings



103 Clay to Asbestos Cement or Ductile Iron

Part No.	Pipe Size	A	B	C
103-44	4x4	5.30	4.75	3.75
*103-46	4x6	5.30	7.00	6.25
103-54	5x4	6.40	4.75	6.50
103-55	5x5	6.40	5.90	4.88
*103-56	5x6	6.40	7.00	6.00
103-64	6x4	7.50	4.75	5.56
103-65	6x5	7.50	5.90	5.88
103-66	6x6	7.50	7.00	5.88
*103-68	6x8	7.50	9.12	6.00
103-86	8x6	9.75	7.00	5.88
103-88	8x8	9.75	9.12	5.88
*103-108	10x8	11.95	9.12	6.38
103-1010	10x10	11.95	11.12	6.12
103-1212	12x12	14.50	13.20	6.18
103-1516	15x16	18.25	17.40	6.75
103-1818	18x18	21.50	19.50	9.00
103-2424	24x24	28.50	25.80	8.12

*Supplied with reducer

104 Concrete to Concrete

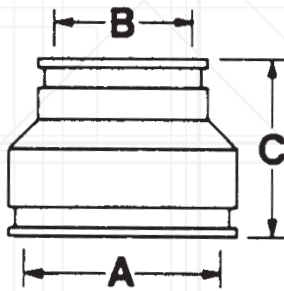
Part No.	Pipe Size	A	B	C
104-44	4x4	5.62	5.62	4.00
104-64	6x4	7.80	5.62	6.00
*104-64EC	6x4	7.80	5.62	6.00
104-66	6x6	7.80	7.80	6.00
104-86	8x6	10.25	7.80	6.00
104-88	8x8	10.25	10.25	6.12
104-108	10x8	12.60	10.60	6.25
104-1010	10x10	12.75	12.75	6.25
104-1210	12x10	15.55	12.60	6.50
104-1212	12x12	15.55	15.55	7.00
104-1212L	12x12	16.25	16.25	6.38
104-1515	15x15	19.50	19.50	9.00
104-1818	18x18	22.70	22.70	9.00
104-2121	21x21	26.20	26.50	9.00
104-2424	24x24	30.00	30.00	9.00
104-2727	27x27	34.50	34.50	9.00
104-3030	30x30	37.50	37.50	9.00

Couplings



105 Concrete to Clay

Part No.	Pipe Size	A	B	C
105-44	4x4	5.62	5.30	4.00
105-64	6x4	7.80	5.30	6.00
105-66	6x6	7.80	7.50	6.00
105-86	8x6	10.25	7.80	6.00
105-88	8x8	10.25	9.75	6.00

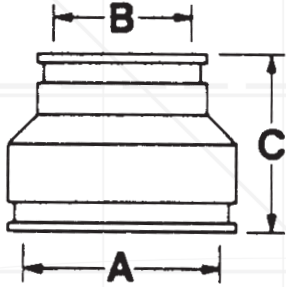


106 Concrete to Cast Iron or Plastic

Part No.	Pipe Size	A	B	C
*106-43	4x3	5.62	3.40	4.30
106-44	4x4	5.62	4.40	4.00
*106-46	4x6	5.62	6.40	6.00
*106-63	6x3	7.80	3.40	6.18
106-64	6x4	7.80	4.40	5.88
*106-64EC	6x4	7.80	4.40	6.00
106-66	6x6	7.80	6.40	5.88
*106-68	6x8	7.80	8.55	5.75
*106-84	8x4	10.25	4.40	6.00
106-86	8x6	10.25	6.40	5.75
*106-86EC	8x6	10.25	6.40	6.12
106-88	8x8	10.25	8.55	5.87
106-108	10x8	12.75	8.55	6.87
106-1010	10x10	12.75	10.60	6.62
106-1210	12x10	15.55	10.60	6.75
106-1212	12x12	15.55	12.60	6.50
106-1212L	12x12	16.55	12.60	7.00
*106-1512	15x12	19.50	12.60	9.00
106-1515	15x15	19.50	15.30	9.00
106-1818	18x18	22.70	18.70	8.62
106-2121	21x21	26.50	22.05	8.38
106-2424	24x24	30.00	24.80	8.12

*Supplied with reducer L=Larger OD

Couplings



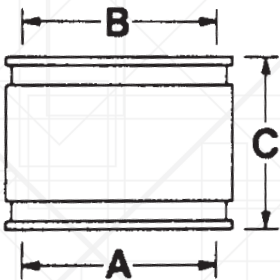
151 Asbestos Cement or Ductile Iron to Cast Iron or Plastic

Part No.	Pipe Size	A	B	C
*151-43	4x3	4.75	3.40	4.60
151-44	4x4	4.75	4.40	4.25
*151-46	4x6	4.75	6.40	6.00
*151-48	4x8	4.75	8.55	6.00
*151-53	5x3	5.90	3.40	5.00
151-54	5x4	5.90	4.40	4.80
151-55	5x5	5.62	5.62	4.00
151-56	5x6	5.90	6.40	4.88
*151-63	6x3	7.00	3.40	6.00
151-64	6x4	7.00	4.40	5.70
*151-64EC	6x4	7.00	5.50	6.00
151-65	6x5	7.00	5.50	5.80
151-66	6x6	7.00	6.40	6.00
*151-68	6x8	7.00	8.55	6.70
*151-84	8x4	9.12	4.40	6.00
151-86	8x6	9.12	6.40	6.00
151-88	8x8	9.12	8.55	6.00
151-810	8x10	9.12	10.60	6.38
*151-812	8x12	9.12	12.60	6.25
*151-108	10x8	11.12	8.55	6.37
151-1010	10x10	11.12	10.60	6.12
151-1210	12x10	13.00	10.60	6.62
151-1212	12x12	13.20	12.60	6.25
151-1215	12x15	13.20	15.30	6.50
151-1615	16x15	17.40	15.30	7.00
151-1818	18x18	19.25	19.25	9.00
151-2021	20x21	22.05	22.05	9.00
151-2424	24x24	25.50	25.50	9.00

*Supplied with reducer

155 Asbestos Cement or Ductile Iron to Asbestos Cement or Ductile Iron

Part No.	Pipe Size	A	B	C
155-44	4x4	4.75	4.75	4.20
155-55	5x5	5.62	5.62	4.00
155-64	6x4	7.00	4.75	6.00
155-66	6x6	7.00	7.00	6.00
155-86	8x6	9.12	7.00	5.80
155-88	8x8	9.12	9.12	6.00
155-1010	10x10	11.12	11.12	6.50
155-1212	12x12	13.20	13.20	6.30
155-1414	14x14	15.30	15.30	9.00
155-1616	16x16	17.40	17.40	9.00
155-1818	18x18	19.50	19.50	9.00
155-2020	20x20	21.60	21.60	9.00
155-2424	24x24	25.80	25.80	9.00



Couplings



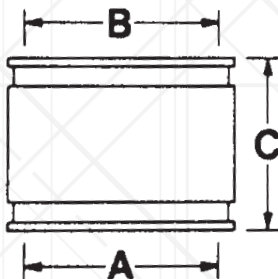
156 Series fits all of these drain pipe materials:

Cast Iron Soil Pipe

- Extra Heavy (XH)
- Service Weight (SW)
- No Hub (NH)

Steel Pipe, Schedule 40, Copper Pipe, Lead Pipe, Plastic Pipe

- ABS/PVC, DWV (Schedule 40)
- ABS/PVC, Schedule 30 (Thin Wall)
- ABS/PVC, Styrene, sewer and drain ASTM 2729
- PVC Sewer and drain ASTM 3034 and SDR35
- PVC Sewer and drain ASTM 3033 and SDR41



156 Cast Iron or Plastic to Cast Iron or Plastic

Part No.	Pipe Size	A	B	C
156-125	1½x1¼	1.66	1.66	3.50
156-15125	1½x1¼	1.90	1.66	3.50
156-15	1½x 1½	1.90	1.90	3.50
156-215	2x1½	2.40	1.90	3.50
156-22	2x2	2.40	2.40	3.50
*156-31	3x1	3.40	1.31	4.00
*156-315	3x1½	3.40	1.90	4.18
156-32	3x2	3.40	2.40	4.00
156-33	3x3	3.40	3.40	4.25
*156-4125	4x1¼	4.40	1.66	4.00
*156-415	4x1½	4.40	1.90	4.18
156-42	4x2	4.40	2.40	4.00
156-42EC	4x2	4.40	2.40	4.00
156-43	4x3	4.40	3.40	4.00
156-43EC	4x3	4.40	3.45	4.00
156-44	4x4	4.50	4.50	4.25
156-44S	4x4	4.40	4.40	4.25
*156-53	5x3	5.50	3.40	4.30
156-54	5x4	5.50	4.40	4.00
156-55	5x5	5.62	5.62	4.00
*156-62	6x2	6.45	2.40	5.25
156-63	6x3	6.40	3.40	6.00
156-64	6x4	6.40	4.40	5.63
156-64L	6x4	6.45	4.50	5.63
156-64EC	6x4	6.45	4.50	6.00
156-65	6x5	6.40	5.50	4.75
156-66	6x6	6.40	6.40	6.00
156-66I	6x6	6.40	6.62	6.00
*156-84	8x4	8.55	4.40	6.00
156-86	8x6	8.55	6.40	5.88
*156-86EC	8x6	8.55	6.40	6.00
156-88	8x8	8.55	8.55	5.75
*156-104	10x4	10.60	4.40	6.63
*156-106	10x6	10.60	6.40	6.63
156-108	10x8	10.60	8.55	6.38
*156-108EC	10x8	10.60	8.55	5.88
156-1010	10x10	10.60	10.60	5.88
*156-126	12x6	12.60	6.40	6.25
*156-128	12x8	12.60	8.55	6.50
156-1210	12x10	12.60	10.60	6.25
156-1212	12x12	12.60	12.60	6.38
156-1414	14x14	14.00	14.00	6.25
156-1510	15x10	15.30	10.60	6.75
156-1512	15x12	15.30	12.60	6.50
156-1515	15x15	15.30	15.30	6.75
156-1616	16x16	16.00	16.00	6.31
156-1815	18x15	18.10	15.02	7.00
156-1818	18x18	18.70	18.70	8.00
156-2121	21x21	22.05	22.05	9.00
156-2421	24x21	25.25	22.05	8.38
156-2424	24x24	24.80	24.80	9.00
156-2724	27x24	28.50	24.80	8.12
156-2727	27x27	27.95	27.95	9.00
156-3027	30x27	32.50	28.00	8.50
156-3030	30x30	32.00	32.00	9.00
156-3636	36x36	38.50	38.50	9.00

*Supplied with reducer • S = Smaller OD • EC = Eccentric • I = Iron Pipe size

Couplings



157 CI/PVC to Copper

Part No.	Pipe Size	A	B	C
157-33	3x3			
157-43	4x3			
157-44	4x4			



159 Socket to Pipe

Part No.	Pipe Size	A	B	C
159-15	1.5"	2.20	1.90	3.82
159-22	2"	2.70	2.36	3.78
159-33	3"	4.00	3.50	4.00
159-44	4"	5.00	4.50	3.78



160 Socket to Socket

Part No.	Pipe Size	A	B	C
160-15	1.5"	2.20	2.20	3.82
160-22	2"	2.70	2.70	3.85
160-33	3"	4.00	4.00	4.00
160-44	4"	5.00	5.00	3.78



170 Corr to CI/PVC

Part No.	Pipe Size	A	B	C
170-33	3x3			
170-44	4x4			
170-66	6x6			
170-88	8x8			

Shear Guards®

Indiana Seal is the exclusive manufacturer and distributor of Shear Guard® by Onset

Shear Guards®

Shear Guards® combined with flexible couplings are designed to prevent piping from becoming offset if soil movement occurs.

Features

- Improved Pipe Alignment
- Available in 4"-12" (other sizes available upon request)
- Works with: PVC Sewer, PVC IPS, Clay, ABS Sewer, ABS IPS, Ductile Iron, and Concrete Pipe
- Installation is hassle free with no additional hardware or adhesives required
- Avoid expensive repairs
- Reduce installation costs



101* Clay to Clay

Part No.	Pipe Size
101-ON4K	4" CLAY x 4" CLAY
101-ON8K	8" CLAY x 8" CLAY
101-ON8WK	8" WESTERN CLAY x 8" WESTERN CLAY

*See Maximum Clay Pipe Diameters below.

102* Clay to CI/PVC

Part No.	Pipe Size
102-ON43PK	4" CLAY x 3" SDR35
102-ON4PK	4" CLAY x 4" SDR35
102-ON54PK	5" CLAY x 4" SDR35
102-ON64PK	6" CLAY x 4" SDR35
102-ON4IK	4" CLAY x 4" SCH40
102-ON54IK	5" CLAY x 4" SCH40
102-ON64IK	6" CLAY x 4" SCH40
102-ON6W4PK	6" WESTERN CLAY x 4" SDR35
102-ON6W4IK	6" WESTERN CLAY x 4" SCH40
102-ON46PK	4" CLAY x 6" SDR35
102-ON56PK	5" CLAY x 6" SDR35
102-ON6PK	6" CLAY x 6" SDR35
102-ON46IK	4" CLAY x 6" SCH40
102-ON56IK	5" CLAY x 6" SCH40
102-ON6IK	6" CLAY x 6" SCH40
102-ON6W6PK	6" WESTERN CLAY x 6" SDR35
102-ON6W6IK	6" WESTERN CLAY x 6" SCH40
102-ON8PK	8" CLAY x 8" SDR35
102-ON8IK	8" CLAY x 8" SCH40
102-ON8W8PK	8" WESTERN CLAY x 8" SDR35
102-ON8W8IK	8" WESTERN CLAY x 8" SCH40
102-ON10PK	10" CLAY x 10" SDR35
102-ON10IK	10" CLAY x 10" SCH40
102-ON12PK	12" CLAY x 12" SDR35
102-ON12IK	12" CLAY x 12" SCH40

*See Maximum Clay Pipe Diameters below.

PK - Sleeve Fits SDR35 Pipe
IK - Sleeve Fits Sch40 Pipe

Pipe Size	Max. Diameter	Pipe Size	Max. Diameter
4"	5.16"	8"	9.75"
5"	6.60"	10"	12.00"
6"	7.37"	12"	14.50"

Shear Guards®

Indiana Seal is the exclusive manufacturer and distributor of Shear Guard® by Onset

Shear Guards®

Shear Guards® combined with flexible couplings are designed to prevent piping from becoming offset if soil movement occurs.

Features

- Improved Pipe Alignment
- Available in 4"-12" (other sizes available upon request)
- Works with: PVC Sewer, PVC IPS, Clay, ABS Sewer, ABS IPS, Ductile Iron, and Concrete Pipe
- Installation is hassle free with no additional hardware or adhesives required
- Avoid expensive repairs
- Reduce installation costs



103* Clay to Ductile Iron

Part No.	Pipe Size
103-ON6K	6" CLAY x DUCTILE IRON
103-ON8K	8" CLAY x DUCTILE IRON

*See Maximum Clay Pipe Diameters below.

Maximum Clay Pipe Diameters			
Pipe Size	Max. Diameter	Pipe Size	Max. Diameter
4"	5.16"	8"	9.75"
5"	6.60"	10"	12.00"
6"	7.37"	12"	14.50"

106 Concrete to CI/PVC

Part No.	Pipe Size
106-ON4PK	4" CONCRETE x 4" SDR35
106-ON4IK	4" CONCRETE x 4" SCH40
106-ON64PK	6" CONCRETE x 4" SDR35
106-ON6PK	6" CONCRETE x 6" SDR35
106-ON6IK	6" CONCRETE x 6" SCH40

PK - Sleeve Fits SDR35 Pipe
IK - Sleeve Fits Sch40 Pipe

151 Ductile Iron to CI/PVC

Part No.	Pipe Size
151-ON4PK	4" DUCTILE IRON X 4" SDR35
151-ON4IK	4" DUCTILE IRON X 4" SCH40
151-ON64PK	6" DUCTILE IRON x 4" SDR35
151-ON64IK	6" DUCTILE IRON x 4" SCH40
151-ON6PK	6" DUCTILE IRON x 6" SDR35
151-ON6IK	6" DUCTILE IRON x 6" SCH40
151-ON8PK	8" DUCTILE IRON X 8" SDR35
151-ON8IK	8" DUCTILE IRON X 8" SCH40
151-ON10PK	10" DUCTILE IRON X 10" SDR35

PK - Sleeve Fits SDR35 Pipe
IK - Sleeve Fits Sch40 Pipe

Shear Guards®

Indiana Seal is the exclusive manufacturer and distributor of Shear Guard® by Onset

Shear Guards®

Shear Guards® combined with flexible couplings are designed to prevent piping from becoming offset if soil movement occurs.

Features

- Improved Pipe Alignment
- Available in 4"-12" (other sizes available upon request)
- Works with: PVC Sewer, PVC IPS, Clay, ABS Sewer, ABS IPS, Ductile Iron, and Concrete Pipe
- Installation is hassle free with no additional hardware or adhesives required
- Avoid expensive repairs
- Reduce installation costs



156

CI/PVC to CI/PVC

Part No.	Pipe Size
156-ON14PK	1" SCH40 x 4" SDR35
156-ON24PK	2" SCH40 x 4" SDR35
156-ON34PK	3" SCH40 x 4" SDR35
156-ON4PK **	4" CI/PVC x 4" SDR35
156-ON6I4PK	6" SCH40 x 4" SDR35
156-ON6P4PK	6" SDR35 x 4" SDR35
156-ON14IK	1" SCH40 x 4" SCH40
156-ON24IK	2" SCH40 x 4" SCH40
156-ON34IK	3" SCH40 x 4" SCH40
156-ON4IK **	4" CI/PVC x 4" SCH40
156-ON6I4IK	6" SCH40 x 4" SCH40
156-ON6P4IK	6" SDR35 x 4" SCH40
156-ON16PK	1" SCH40 x 6" SDR35
156-ON26PK	2" SCH40 x 6" SDR35
156-ON36PK	3" SCH40 x 6" SDR35
156-ON4I6PK	4" SCH40 x 6" SDR35
156-ON4P6PK	4" SDR35 x 6" SDR35
156-ON6I6PK	6" SCH40 x 6" SDR35
156-ON6PK	6" SDR35 x 6" SDR35
156-ON16IK	1" SCH40 x 6" SCH40
156-ON26IK	2" SCH40 x 6" SCH40
156-ON36IK	3" SCH40 x 6" SCH40
156-ON4I6IK	4" SCH40 x 6" SCH40
156-ON4P6IK	4" SDR35 x 6" SCH40
156-ON6IK	6" SCH40 x 6" SCH40
156-ON6P6IK	6" SDR35 x 6" SCH40
156-ON86IK	8" SCH40 x 6" SCH40
156-ON8PK	8" SDR35 x 8" SDR35
156-ON8IK	8" SCH40 x 8" SCH40
156-ON10PK	10" SDR35 x 10" SDR35
156-ON10IK	10" SCH40 x 10" SCH40
156-ON12PK	12" SDR35 x 12" SDR35
156-ON12IK	12" SCH40 x 12" SCH40

** Coupling fits Cast Iron, SCH40 or SDR35

PK - Sleeve Fits SDR35 Pipe
IK - Sleeve Fits Sch40 Pipe

Shear Guard Installation Instructions



Step 1
Slide the Shear Guard™ support onto exposed pipe that is to be joined to existing pipe.



Step 2
Attach flexible coupling to pipes making sure clamp screws are aligned before tightening both bands.



Step 3
Slide Shear Guard™ into place over flexible coupling aligning clamp screw into key hole.



Step 4
Properly bed and backfill per local codes.

Fast Branch Tees, Adapters and Accessories



FBT Fast Branch Tees

Part No.	Pipe Size
FBT-4P	4" PSM FAST BRANCH TEE
FBT-4I	4" IPS FAST BRANCH TEE
FBT-6P	6" PSM FAST BRANCH TEE
FBT-6I	6" IPS FAST BRANCH TEE
FBT-8P	8" PSM FAST BRANCH TEE

(Rigid PVC Adapters Sold Separately)



FBT Fast Branch Adapters

Part No.	Pipe Size
925-FBT4	4" PSM GASKET X SPIGOT ADPT
925-FBT6	6" PSM GASKET X SPIGOT ADPT
125-FBT8	8" PSM GASKET X SPIGOT ADPT
H925-FBT4	4" PSM HUB X SPIGOT ADPT
H925-FBT6	6" PSM HUB X SPIGOT ADPT
225-FBT8	8" PSM HUB X SPIGOT ADPT
G325-FBT4	4" IPS GASKET X SPIGOT ADPT
G325-FBT6	6" IPS GASKET X SPIGOT ADPT
325-FBT4	4" IPS HUB X SPIGOT ADPT
325-FBT6	6" IPS HUB X SPIGOT ADPT
941-FBT4	4" PSM SPIGOT X SPIGOT ADPT
941-FBT6	6" PSM SPIGOT X SPIGOT ADPT
141-FBT8	8" PSM SPIGOT X SPIGOT ADPT
341-FBT4	4" IPS SPIGOT X SPIGOT ADPT
341-FBT6	6" IPS SPIGOT X SPIGOT ADPT
PC25-FBT4G1	4" GROUP 1 CORRUGATED BELL
PC25-FBT6G1	6" GROUP 1 CORRUGATED BELL
PC25-FBT8G1	8" GROUP 1 CORRUGATED BELL
PC25-FBT4G2	4" GROUP 2 CORRUGATED BELL
PC25-FBT6G2	6" GROUP 2 CORRUGATED BELL
PC25-FBT8G2	8" GROUP 2 CORRUGATED BELL

(Fast Branch Tee Sold Separately)



FBT Hole Saws, Arbors and Coring Bits

Part No.	Description
FB-5X6HS	5" OD X 6" DEEP HOLE SAW W/ARBOR
FB-7X6HS	7" OD X 6" DEEP HOLE SAW W/ARBOR
FB-9X6HS	9" OD X 6" DEEP HOLE SAW W/ARBOR
FB-SAW5	5" OD X 6" DEEP HOLE SAW ONLY
FB-SAW7	7" OD X 6" DEEP HOLE SAW ONLY
FB-SAW9	9" OD X 6" DEEP HOLE SAW ONLY
FB-ARBOR	3/8" X 12" DRILL BIT WITH 1/2" ARBOR
FB-5X13CB	5" OD X 13" DEEP CORING BIT
FB-7X13CB	7" OD X 13" DEEP CORING BIT
FB-9X13CB	9" OD X 13" DEEP CORING BIT

Coring Hole Sizes:

4" Fast Branch Tee's 5.00" Hole Saw
 6" Fast Branch Tee's 7.00" Hole Saw
 8" Fast Branch Tee's 9.00" Hole Saw

Nominal Pipe Sizing:

Use on 8" Diameter and Larger Pipe
 Use on 10" Diameter and Larger Pipe
 Use on 15" Diameter and Larger Pipe

Installation Instructions

The Fast Branch Tee by Indiana Seal allows you to connect service pipe to corrugated, closed profile, open profile and solid wall piping. This includes thermoplastics, clay and concrete materials.

- 1** Drill a perpendicular opening using the proper sized hole saw into the pipe. Remove any burrs that appear around the opening using a scraper, file, sand paper, pocket knife or similar scraping tool.
- 2** Remove the band clamp from the Fast Branch Tee. Fold and insert it into the drilled opening of the pipe. Unfold the FBT and position it into place and pull up on it until it stops on the inside wall of the pipe.
- 3** Measure the distance of the FBT from the inside pipe stop to the entrance. Using a belled end or plain end stub of pipe, mark that distance of insertion travel on the leading edge of pipe that will be inserted into the FBT. Cut off the section of the pipe to the desired length. Lightly bevel the leading end of the pipe for easier insertion.
- 4** Apply an even and smooth coat of certified pipe lubricant to the beveled end of the pipe and to the inside of the FBT.
- 5** Begin by pushing the beveled leading end of the pipe into the Fast Branch Tee by hand. With the use a hammer and block of wood, drive the lateral pipe into the FBT to the pre-marked insertion line on the pipe. Check to ensure the FBT is still positioned up against the inside wall of the pipe and adjust where needed.
- 6** Reinstall the band clamp to 60 in-lbs of torque and connect the service pipe.

Coring Hole Sizes:

4" FBT: 5.00" Hole Saw
6" FBT: 7.00" Hole Saw
8" FBT: 9.00" Hole Saw

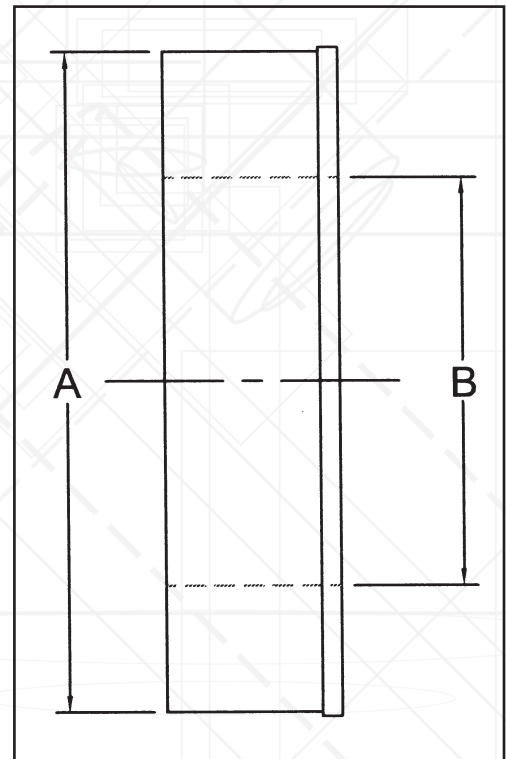
Nominal Pipe Sizing:

8" Diameter and Larger
10" Diameter and Larger
15" Diameter and Larger

Reducers

Reducers

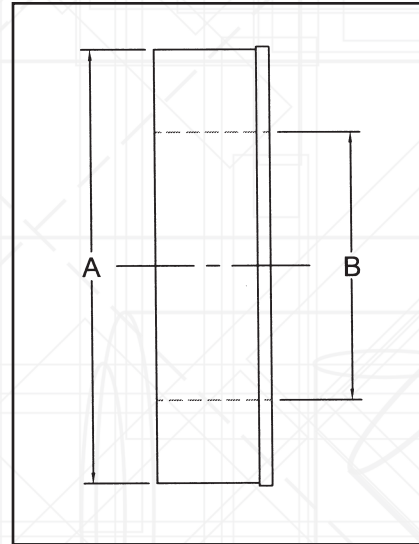
PART NO.	DESCRIPTION	"A" OD "B" ID	
R01-54	5" CLAY TO 4" CLAY	6.40"	5.30"
R01-64	6" CLAY TO 4" CLAY	7.50"	5.30"
R01-65	6" CLAY TO 5" CLAY	7.50"	6.40"
R01-85	8" CLAY TO 5" CLAY	9.75"	6.40"
R01-86	8" CLAY TO 6" CLAY	9.75"	7.50"
R02-44	4" CLAY TO 4" CI/PVC	5.30"	4.40"
R02-44EC	4" CLAY TO 4" CI/PVC	5.30"	4.40"
R02-46	4" CLAY TO 6" CI/PVC	5.30"	6.40"
R02-48	4" CLAY TO 8" CI/PVC	5.30"	8.55"
R02-54	5" CLAY TO 4" CI/PVC	6.40"	4.40"
R02-64	6" CLAY TO 4" CI/PVC	7.50"	4.40"
R02-64EC	6" CLAY TO 4" CI/PVC	7.50"	4.40"
R02-66	6" CLAY TO 6" CI/PVC	7.50"	6.40"
R02-66W	6" CLAY TO 6" CI/PVC	7.80"	6.40"
R02-68	6" CLAY TO 8" CI/PVC	7.50"	8.55"
R02-86	8" CLAY TO 6" CI/PVC	9.75"	6.40"
R02-88	8" CLAY TO 8" CI/PVC	9.75"	8.55"
R02-88W	8" CLAY TO 8" CI/PVC	10.25"	8.55"
R02-810	8" CLAY TO 10" CI/PVC	9.75"	10.60"
R02-1010	10" CLAY TO 10" CI/PVC	11.95"	10.60"
R02-1212	12" CLAY TO 12" CI/PVC	14.50"	12.60"
R02-1515	15" CLAY TO 15" CI/PVC	18.25"	15.30"
R02-1818	18" CLAY TO 18" CI/PVC	21.50"	18.70"
R03-44	4" CLAY TO 4" AC/DI	5.30"	4.75"
R03-46	4" CLAY TO 6" AC/DI	5.30"	7.00"
R03-54	5" CLAY TO 4" AC/DI	6.40"	4.75"
R03-58	5" CLAY TO 8" AC/DI	6.40"	9.12"
R03-64	6" CLAY TO 4" AC/DI	7.50"	4.75"
R03-66	6" CLAY TO 6" AC/DI	7.50"	7.00"
R03-68	6" CLAY TO 8" AC/DI	7.50"	9.12"
R03-86	8" CLAY TO 6" AC/DI	9.75"	7.00"
R03-88	8" CLAY TO 8" AC/DI	9.75"	9.12"
R03-1010	10" CLAY TO 10" AC/DI	11.95"	11.12"
R03-1212	12" CLAY TO 12" AC/DI	14.50"	13.20"
R04-64	6" CONC TO 4" CONC	7.80"	5.62"
R05-44	4" CONC TO 4" CLAY	5.62"	5.30"
R05-46	4" CONC TO 6" CLAY	5.62"	7.50"
R05-64	6" CONC TO 4" CLAY	7.80"	5.30"
R05-65	6" CONC TO 5" CLAY	7.80"	6.40"
R05-66	6" CONC TO 6" CLAY	7.80"	7.50"
R05-85	8" CONC TO 5" CLAY	10.25"	6.40"
R05-86	8" CONC TO 6" CLAY	10.25"	7.50"
R05-88	8" CONC TO 8" CLAY	10.25"	9.75"
R05-1010	10" CONC TO 10" CLAY	13.00"	11.95"
R05-1212	12" CONC TO 12" CLAY	15.55"	14.50"
R06-44	4" CONC TO 4" CI/PVC	5.62"	4.40"
R06-46	4" CONC TO 6" CI/PVC	5.62"	6.40"
R06-48	4" CONC TO 8" CI/PVC	5.62"	8.55"
R06-64	6" CONC TO 4" CI/PVC	7.80"	4.40"
R06-66	6" CONC TO 6" CI/PVC	7.80"	6.40"



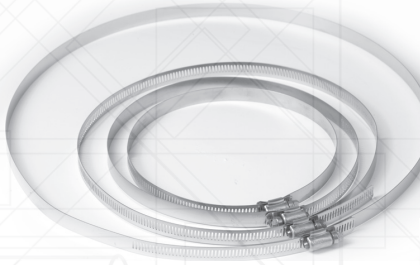
Reducers

Reducers

PART NO.	DESCRIPTION	"A" OD	"B" ID
R06-86	8" CONC TO 6" CI/PVC	10.25"	6.40"
R06-88	8" CONC TO 8" CI/PVC	10.25"	8.55"
R06-1010	10" CONC TO 10" CI/PVC	13.00"	10.60"
R06-1212	12" CONC TO 12" CI/PVC	15.55"	12.60"
R06-1515	15" CONC TO 15" CI/PVC	19.50"	15.30"
R51-44	4" AC/DI TO 4" CI/PVC	4.75"	4.40"
R51-46	4" AC/DI TO 6" CI/PVC	4.75"	6.40"
R51-48	4" AC/DI TO 8" CI/PVC	4.75"	8.55"
R51-64	6" AC/DI TO 4" CI/PVC	7.00"	4.40"
R51-66	6" AC/DI TO 6" CI/PVC	7.00"	6.40"
R51-68	6" AC/DI TO 8" CI/PVC	7.00"	8.55"
R51-86	8" AC/DI TO 6" CI/PVC	9.12"	6.40"
R51-88	8" AC/DI TO 8" CI/PVC	9.12"	8.55"
R51-810	8" AC/DI TO 10" CI/PVC	9.12"	10.60"
R51-1010	10" AC/DI TO 10" CI/PVC	11.12"	10.60"
R51-1212	12" AC/DI TO 12" CI/PVC	13.20"	12.60"
R51-1615	16" AC/DI TO 15" CI/PVC	17.40"	15.30"
R55-64	6" AC/DI TO 4" AC/DI	7.00"	4.75"
R55-86	8" AC/DI TO 6" AC/DI	9.12"	7.00"
R56-21	2" CI/PVC TO 1" CI/PVC	2.40"	1.31"
R56-215	2" CI/PVC TO 1 1/2" CI/PVC	2.40"	1.90"
R56-42	4" CI/PVC TO 2" CI/PVC	4.40"	2.40"
R56-425	4" CI/PVC TO 2 1/2" CI/PVC	4.40"	2.90"
R56-43	4" CI/PVC TO 3" CI/PVC	4.40"	3.40"
R56-64	6" CI/PVC TO 4" CI/PVC	6.40"	4.40"
R56-84	8" CI/PVC TO 4" CI/PVC	8.55"	4.40"
R56-86	8" CI/PVC TO 6" CI/PVC	8.55"	6.40"
R56-108	10" CI/PVC TO 8" CI/PVC	10.60"	8.55"
RCDI-44	4" CONC TO 4" AC/DI	5.62"	4.75"
RCDI-46	4" CONC TO 6" AC/DI	5.62"	7.00"
RCDI-64	6" CONC TO 4" AC/DI	7.80"	4.75"
RCDI-66	6" CONC TO 6" AC/DI	7.80"	7.00"
RCDI-86	8" CONC TO 6" AC/DI	10.25"	7.00"
RCDI-88	8" CONC TO 8" AC/DI	10.25"	9.12"
RCDI-1010	10" CONC TO 10" AC/DI	13.00"	11.12"
RCDI-1212	12" CONC TO 12" AC/DI	15.55"	13.20"
R57-21	2" CI/PVC TO 1" COPPER	2.40"	1.00"
R57-22	2" CI/PVC TO 2" COPPER	2.40"	2.125"
R57-33	3" CI/PVC TO 3" COPPER	3.40"	3.125"
R57-44	4" CI/PVC TO 4" COPPER	4.40"	4.125"



Hose Clamps and Wrench



Our hose clamps are constructed of premium grade stainless steel throughout, including housing and screw. The band is a burr-less, one-piece unit with high quality finish. Deeply-pitched grooves in interlocked housing ensure a positive seal. Available in sizes ranging from 1 1/16" through 21". For information about additional band sizes, please call **1.800.437.4670.**

Series 300 Stainless Steel Hose Clamps

Part No.	Fits	Min Diameter		Max Diameter		Length inches
		in.	mm.	in.	mm.	
SSHHC24	1 1/4" or 1 1/2" Tubing	0.50"	13	2.0"	51	7.28
SSHHC28	1 1/4" Cast Iron / Plastic / Tubing	1.25"	32	2.25"	57	8.07
SSHHC32	1 1/2" Cast Iron / Plastic / Seal Cap	1.50"	38	2.50"	63	8.85
SSHHC36	2" Drain Trap Connectors	1.75"	44	2.75"	70	9.64
SSHHC44	2" Cast Iron / Plastic / Seal Cap	1.25"	32	3.25"	83	11.21
SSHHC60	3" Seal Cap / Cast Iron / Plastic	2.25"	57	4.25"	108	14.12
SSHHC64	3" Socket	2.50"	64	4.50"	114	15.13
SSHHC80	4" Cast Iron / Plastic / Seal Cap / AC/ DI	3.50"	89	5.50"	140	18.27
SSHHC96	4" Conc / Clay / 5" Cast Iron / Plastic / Seal Cap	4.50"	114	6.50"	165	21.41
SSHHC116	5" Clay / 6" Cast Iron / Plastic / Seal Cap	5.75"	146	7.75"	197	25.00
SSHHC120	6" Asbestos Cement / Ductile Iron	6.00"	152	8.00"	203	26.12
SSHHC128	6" Clay	6.50"	165	8.50"	216	27.69
SSHHC132	6" Clay / Concrete	6.75"	171	8.75"	222	28.48
SSHHC152	8" Cast Iron / Plastic / Seal Cap	8.00"	203	10.00"	254	32.40
SSHHC164	8" Asbestos Cement / Ductile Iron / Clay	8.75"	222	10.75"	273	34.76
SSHHC176	8" Concrete	9.50"	241	11.50"	292	37.11
SSHHC188	10" Cast Iron / Plastic / AC/DI	10.31"	262	12.25"	311	39.47
SSHHC212	10" Clay	11.81"	300	13.75"	349	44.18
SSHHC224	10" Conc / 12" Cast Iron / Plastic / AC/DI	12.56"	319	14.50"	368	46.53
SSHHC248	12" Clay	14.06"	357	16.00"	406	51.24
SSHHC270	12" Concrete / 15" Cast Iron / Plastic	15.44"	392	17.38"	441	55.57
SSHHC284	16" Ductile Iron	16.36"	416	18.41"	468	58.80
SSHHC312	15" Clay / 16" AC / 18" Plastic	18.06"	459	20.00"	508	63.80
SSHHC332	15" Concrete / 18" AC/DI	19.31"	491	21.25"	540	67.73

Band & Housing 301SS Screw 305SS



5/16" Ratchet Torque Wrench

Features fingertip control of reversing collar to allow tightening and loosening of bolts without changing tools. Pre-set to 60 inch pounds torque. Durable all-metal construction for years of dependable use with all Indiana Seal couplings and other banded products.

Shear Rings

Stainless Steel Shear Rings

.007 Wall

Team up these shear rings with our couplings to increase the integrity of any pipe joint. All stainless steel construction ensures extra rigidity and strength, and provides protection in even the most unstable ground conditions. Available for several types of piping, in most popular sizes.

Part No.	Size/Description
SSSR-64	3" Cast Iron / PVC
SSSR-80	4" Cast Iron / PVC
SSSR-88	4" Asbestos Cement or Ductile Iron
SSSR-96	4" Concrete or Clay
SSSR-116	6" Cast Iron / PVC
SSSR-132	6" Concrete / Clay / AC / Ductile Iron
SSSR-152	8" Cast Iron / PVC
SSSR-164	8" Clay
SSSR-174	8" Concrete
SSSR-188	10" Cast Iron / PVC
SSSR-212	10" Clay
SSSR-224	10" Concrete or 12" Cast Iron / PVC
SSSR-248	12" Clay
SSSR-270	15" Cast Iron / PVC
SSSR-312	15" Clay or 18" PVC
SSSR-332	18" Asbestos Cement

Shield, Band & Housing 301 Stainless. Screw, Eyelet 305 Stainless



Stainless Steel Amazon Shear Rings

.012 Wall

Team up these shear rings with our couplings to increase the integrity of any pipe joint. All stainless steel construction ensures extra rigidity and strength, and provides protection in even the most unstable ground conditions. Available for several types of piping, in most popular sizes. Nut & bolt bands of 316 Stainless available on some parts. Please request.

Part No.	Size/Description
SSASR-64	3" Cast Iron / PVC
SSASR-80	4" Cast Iron / PVC
SSASR-88	4" Asbestos Cement or Ductile Iron
SSASR-96	4" Concrete or Clay
SSASR-116	6" Cast Iron / PVC
SSASR-132	6" Concrete / Clay / AC / Ductile Iron
SSASR-152	8" Cast Iron / PVC
SSASR-164	8" Clay
SSASR-174	8" Concrete
SSASR-188	10" Cast Iron / PVC
SSASR-212	10" Clay
SSASR-224	10" Concrete or 12" Cast Iron / PVC
SSASR-248	12" Clay
SSASR-270	15" Cast Iron / PVC
SSASR-312	15" Clay or 18" PVC
SSASR-332	18" Asbestos Cement

Shield, Band & Housing 301 Stainless. Screw, Eyelet 305 Stainless



Step Down Coupler

Take a step up to the Step Down, offering advanced features with the same strength and reliability of the standard Shear Ring and Amazon Shear Ring couplings. The Step Down shielded coupling is used where a transition from differing pipe materials is needed, improving the ease of a water tight connection while maintaining the strength of the joint. Through the use of the Step Down, the compressing of additional material is eliminated ensuring the material that is needed is compressed and sealed tightly against the pipe. Available with both the Shear Ring (.007 Stainless Steel band wall thickness) and Amazon Shear Ring (.012 Stainless Steel band Wall thickness) shields.



Connectors and Adapters

Seal Caps

Our seal caps provide a quick, economical means to terminate any DWV piping system or to establish a quick, convenient clean-out point. They allow a permanent method of capping a system, and can be used again and again. The convex face allows pressure testing without fear of bursting. Made of specially treated PVC, they're impervious to corrosive or acid damage. Use these caps with confidence on cast iron, steel, copper, lead or plastic piping.

Part No.	Size
SC-150	1 1/2"
SC-200	2"
SC-300	3"
SC-400	4"
SC-500	5"
SC-600	6"
SC-800	8"



Drain & Trap, Tubular Drain Connectors

Drain and Trap Connectors

These connectors offer a quick, low-cost alternative to gluing or soldering, and eliminate the need for special tools or threading. Just slip the ends over the pipes to be joined, and tighten the stainless steel clamps. These connectors are ideal for repairs and alterations and for new installations.

Tubular Drain Connectors

These connectors provide a simple, thrifty, leak-proof link-up in any 1 1/4" or 1 1/2" brass or plastic drain system. Use them to join pipes or to make in-line repairs. They're ideal for laundry tubs, sinks and lavatories – wherever you need a quick, permanent connection.

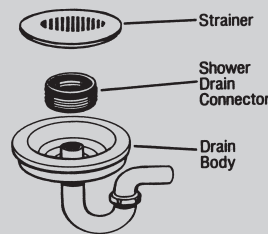


Part No.	Size
DT-110	1 1/2" IPS x 1"
DT-150	1 1/2" IPS x 1 1/2" or 1 1/4"
DT-210	2" IPS x 1"
DT-215	2" IPS x 1 1/2" or 1 1/4"

Part No.	Able to Connect
TDC-150	Brass to Brass Plastic to Plastic Brass to Plastic

Shower Drain Connectors

Indiana Seal shower drain connectors are the one-piece solution to rapid and maintenance-free connection of most shower systems. No special tools are required, and these connectors eliminate caulking, gluing or threading. They're ideal for connecting 2" diameter DWV plastic, Schedule 40 steel, or Extra Heavy cast iron pipe to the shower drain body.



Part No.	Fits
SDC200	American Brass and Aluminum, Casper (Model 101-101p), Kohler, Garvin (Model 475), Intercon, Schaul Mfg. Brass (Model 1524)
SDC210	Owens Corning One-Piece Molded, Mustee One-Piece Molded

Utility Adapters

Precision designed and constructed of chemical-resistant PVC, these adapters provide a one-piece solution to more costly, multi-part connections in most low-pressure condensate drain systems. They're ideal for use with air conditioner and dishwasher systems. No tools are required to connect these adapters between 1/2", 3/4" or 1" CPVC or copper pipe and 1 1/2" DWV Schedule 40 plastic sockets.



Part No.	Fits
UA1510	1 1/2" x 1" Connections
UA1550	1 1/2" x 1/2" Connections
UA1575	1 1/2" x 3/4" Connections

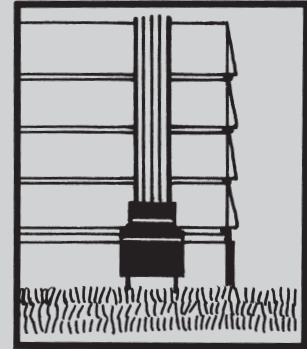
Connectors and Adapters



Downspout Connectors

Keep leaves and other debris out of the drainage flow with this simple one-piece connector. Made of flexible yet rugged PVC, it stretches over most downspouts and drain pipes to provide a lasting seal – with no glue or cement required. These connectors are designed for use with aluminum, steel or plastic downspouts, and cast iron, spiral, corrugated or plastic drain pipes.

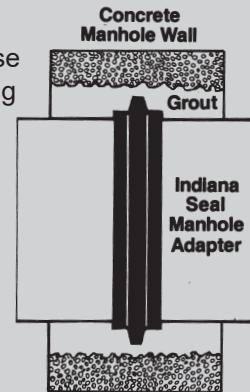
Part No.	Size
DSA-33	3" x 3"
DSA-43	4" x 3"



Manhole Adapters

Precision engineered to eliminate leaks around pipe entrance to manhole walls. The inherent flexibility of these water stops also allows pipe movement without damaging the seal joint itself. Available for use with a wide range of pipe material in sizes from 4" through 27" diameters, these adapters are particularly useful for pipe lacking compatibility with concrete, chiefly plastic piping. Also available in custom sizes.

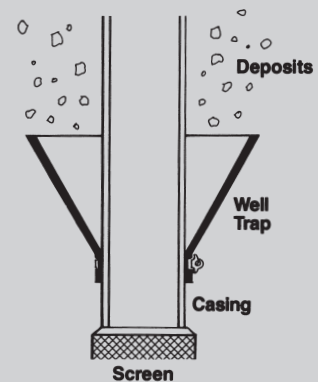
Part No.	Size
MA40	4"
MA60	6"
MA80	8"
MA100	10"
MA120	12"
MA150	15"
MA180	18"
MA210	21"
MA240	24"
MA270	27"



Well Traps

Our well traps ensure the steady flow of clean well water by protecting the critical pump suction area from dirt, stones and other in-ground hazards. They also protect against the dangers of rust and corrosion. Constructed of flexible PVC, they're impervious to water and water-borne contaminants to provide permanent protection for the well water supply.

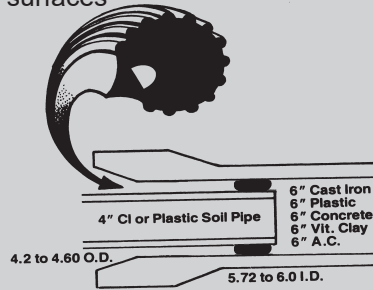
Part No.	Size
WT50-25	2" x 5"
WT60-35	3" x 6"
WT60-45	4" x 6"
WT70-45	4" x 7"
WT70-55	5" x 7"
WT80-55	5" x 8"
WT80-65	6" x 8"
WT90-55	5" x 9"
WT100-65	6" x 10"



Universal Sewer and Compression Seals

Universal Sewer Adapters

Indiana Seal sewer adapters make quick work of connecting most 4" house pipe and 6" sewer pipe with an air-tight, water-tight seal. The specially designed ribbing literally grips the surfaces of both pipes, thus providing a permanent bond. These rugged adapters (Part Number 108-64) meet or surpass ASTM C443 and C425 standards for connections of cast iron or plastic house pipe to asbestos cement, clay, concrete or plastic sewer drainage pipe.



Compression Seals

Indiana Seal cuts through the sometimes bewildering array of sewer piping types and sizes with an assortment of compression seals designed to provide a lasting, high-integrity joint in even the most diverse of systems. The precision engineering of these seals **eliminates the need for mortar or cement at sewer joints** – and ensures a **lasting bond** through years of natural ground movement. The inherent pliability of these compression seals allows them to flex during normal freezing and thawing periods without damaging the water-tight integrity at the joint. The unique ribbed construction provides a distribution of sealing points against the piping material surface. These compression seals are available in **sizes ranging from 1 1/2" to 8"**, and are manufactured under the same exacting specifications which characterize our other quality products. For reliability and ease of installation, always insist on **Compression Seals by Indiana Seal**.

To ensure a proper seal, always submit bell, hub or socket dimensions when placing your order, to compensate for any variations which might exist among sewer pipe suppliers.



Compression Seals



Part No.	Size	Description	To	Size	Description
2-15	2"	Service Weight Cast Iron Soil Pipe Hub		1 1/2"	Sch. 40 (DWV) Plastic/Sch. 40 Steel
2X-15	2"	Extra Heavy Cast Iron Soil Pipe Hub		1 1/2"	Sch. 40 (DWV) Plastic/Sch. 40 Steel
2-21	2"	Service Weight Cast Iron Soil Pipe Hub		2"	SV & NH Soil Pipe
2X-21	2"	Extra Heavy Cast Iron Soil Pipe Hub		2"	SV & NH Soil Pipe
2-25	2"	Service Weight Cast Iron Soil Pipe Hub		2"	Sch. 40 (DWV) Plastic/Sch. 40 Steel
2X-25	2"	Extra Heavy Cast Iron Soil Pipe Hub		2"	Sch. 40 (DWV) Plastic/Sch. 40 Steel
3-15	3"	Service Weight Cast Iron Soil Pipe Hub		1 1/2"	Sch. 40 (DWV) Plastic/Sch. 40 Steel
3-21	3"	Service Weight Cast Iron Soil Pipe Hub		2"	SV & NH Soil Pipe
3X-21	3"	Extra Heavy Cast Iron Soil Pipe Hub		2"	SV & NH Soil Pipe
3-25	3"	Service Weight Cast Iron Soil Pipe Hub		2"	Sch. 40 (DWV) Plastic/Sch. 40 Steel
3X-25	3"	Extra Heavy Cast Iron Soil Pipe Hub		2"	Sch. 40 (DWV) Plastic/Sch. 40 Steel
3-31	3"	Service Weight Cast Iron Soil Pipe Hub		3"	SV & NH Soil Pipe
3-35	3"	Service Weight Cast Iron Soil Pipe Hub		3"	Sch. 40 (DWV) Plastic/Sch. 40 Steel
3X-35	3"	Extra Heavy Cast Iron Soil Pipe Hub		3"	Sch. 40 (DWV) Plastic/Sch. 40 Steel
4-15	4"	Service Weight Cast Iron Soil Pipe Hub		1 1/2"	Sch. 40 (DWV) Plastic/Sch. 40 Steel
4-21	4"	Service Weight Cast Iron Soil Pipe Hub		2"	SV & NH Soil Pipe
4X-21	4"	Extra Heavy Cast Iron Soil Pipe Hub		2"	SV & NH Soil Pipe
4-25	4"	Service Weight Cast Iron Soil Pipe Hub		2"	Sch. 40 (DWV) Plastic/Sch. 40 Steel
4X-25	4"	Extra Heavy Cast Iron Soil Pipe Hub		2"	Sch. 40 (DWV) Plastic/Sch. 40 Steel
4-31	4"	Service Weight Cast Iron Soil Pipe Hub		3"	SV & NH Soil Pipe
4X-31	4"	Extra Heavy Cast Iron Soil Pipe Hub		3"	SV & NH Soil Pipe
4-35	4"	Service Weight Cast Iron Soil Pipe Hub		3"	Sch. 40 (DWV) Plastic/Sch. 40 Steel
4X-35	4"	Extra Heavy Cast Iron Soil Pipe Hub		3"	Sch. 40 (DWV) Plastic/Sch. 40 Steel
4-41	4"	Service Weight Cast Iron Soil Pipe Hub		4"	SV & NH Soil Pipe
4X-41	4"	Extra Heavy Cast Iron Soil Pipe Hub		4"	SV & NH Soil Pipe
4-45	4"	Service Weight Cast Iron Soil Pipe Hub		4"	Sch. 40 (DWV) Plastic/Sch. 40 Steel
4X-45	4"	Extra Heavy Cast Iron Soil Pipe Hub		4"	Sch. 40 (DWV) Plastic/Sch. 40 Steel
6X-45	6"	Extra Heavy Cast Iron Soil Pipe Hub		4"	C.I. XH/ABS/PVC DWV
6X-61	6"	Extra Heavy Cast Iron Soil Pipe Hub		6"	C.I. SV/C.I. NH/ABS/PVC S & D
6-65	6"	Service Weight Cast Iron Soil Pipe Hub		6"	Sch. 40 (DWV) Plastic/XH Soil Pipe/Sch. 40 Steel
6X-65	6"	Extra Heavy Cast Iron Soil Pipe Hub		6"	C.I. XH/ABS/PVC DWV

Description	Cast Iron Soil Pipe Hub Size					
	2" SV	2" XH	3" SV	3" XH	4" SV	4" XH
1 1/2" Sch. 40 (DWV) Plastic, Sch. 40 Steel	2-15	2X-15	3-15	3X-15	4-15	4X-15
2" SV & NH Soil Pipe	2-21	2X-21	3-21	3X-21	4-21	4X-21
2" Sch. 40 (DWV) Plastic, XH Soil Pipe, Sch. 40 Steel	2-25	2X-25	3-25	3X-25	4-25	4X-25
3" S & D Plastic, SV & NH Soil Pipe			3-31	3X-31	4-31	4X-31
3" Sch. 40 (DWV) Plastic, XH Soil Pipe, Sch. 40 Steel			3-35	3X-35	4-35	4X-35
4" SV & NH Soil Pipe, ABS/PVC S & D					4-41	4X-41
4" XH Soil Pipe, ABS/PVC DWV					4-45	4X-45

Compression Seals



Part No.	Size	Description	To	Size	Description
404-41	4"	Houston Concrete; Cantax Bell I.D. 5.375; Logan Clay (Wedgelox); Larson Clay (Wedgelox); Superior Clay (Wedgelox)		4"	C.I. SV/C.I. NH/ABS/PVC S & D
404-45	4"	Houston Concrete; Cantax Bell I.D. 5.375; Logan Clay (Wedgelox); Larson Clay (Wedgelox); Superior Clay (Wedgelox)		4"	C.I. XH/ABS/PVC DWV
406-45	4"	Pomona Clay Bell		4"	C.I. XH/ABS/PVC DWV
408-41	4"	Clow Clay Bell; Dickey Clay Prem. Bell; Logan Clay ("O" Ring)		4"	C.I. SV/C.I. NH/ABS/PVC S & D
408-45	4"	Clow Clay Bell; Dickey Clay Prem. Bell; Logan Clay ("O" Ring)		4"	C.I. XH/ABS/PVC DWV
410-45	4"	U.S. Concrete; Uniloc Clay		4"	C.I. XH/ABS/PVC DWV
432-41	4"	Sherman Concrete Bell; Griffin Clay Bell		4"	C.I. SV/C.I. NH/ABS/PVC S & D
432-45	4"	Sherman Concrete Bell; Griffin Clay Bell		4"	C.I. XH/ABS/PVC DWV
440-41	4"	Hermitage/Knoxville Concrete Bell Sewer & Drain, Plastic Socket Compression Seals, ASTM3033 PSP, ASTM3034 PSM, SDR35, SDR41		4"	C.I. SV/C.I. NH/ABS/PVC S & D
440-45	4"	Hermitage/Knoxville Concrete Bell Sewer & Drain, Plastic Socket Compression Seals, ASTM3033 PSP, ASTM3034 PSM, SDR35, SDR41		4"	C.I. XH/ABS/PVC DWV
490-41	4"	Brockway Clay Bell; Larson Clay "O" Ring		4"	C.I. SV/C.I. NH/ABS/PVC S & D
490-45	4"	Brockway Clay Bell; Larson Clay "O" Ring		4"	C.I. XH/ABS/PVC DWV
502-43	6"	Hershey Wye Dye; Pioneer Saddle		4"	Ductile Iron
604-41	6"	Sherman Concrete Bell; Cantax Bell I.D. 8.250; Griffin Clay Bell; Larson Clay (Wedgelox); Logan Clay (Wedgelox); Superior Clay (Wedgelox)		4"	C.I. SV/C.I. NH/ABS/PVC S & D
604-45	6"	Sherman Concrete Bell; Cantax Bell I.D. 8.250; Griffin Clay Bell; Larson Clay (Wedgelox); Logan Clay (Wedgelox); Superior Clay (Wedgelox)		4"	C.I. XH/ABS/PVC DWV
604-61	6"	Sherman Concrete Bell; Cantax Bell I.D. 8.250; Griffin Clay Bell; Larson Clay (Wedgelox); Logan Clay (Wedgelox); Superior Clay (Wedgelox)		6"	C.I. SV/C.I. NH/ABS/PVC S & D
608-41	6"	Eugene Concrete Bell; Portland Concrete Bell; Salem Concrete Bell; W.R. White Concrete Bell; Cantax Bell I.D. 7.860; Clow Clay Bell; Clow Clay Nobel; Dickey Clay Prem. Bell		4"	C.I. SV/C.I. NH/ABS/PVC S & D

To ensure proper seal, always submit bell, hub or socket dimensions or type of pipe.

Compression Seals



Part No.	Size	Description	To	Size	Description
608-45	6"	Eugene Concrete Bell; Portland Concrete Bell; Salem Concrete Bell; W.R. White Concrete Bell; Cantex Bell I.D. 7.860; Clow Clay Bell; Clow Clay Nobel; Dickey Clay Prem. Bell		4"	C.I. XH/ABS/PVC DWV
608-61	6"	Eugene Concrete Bell; Portland Concrete Bell; Salem Concrete Bell; W.R. White Concrete Bell; Cantex Bell I.D. 7.860; Clow Clay Bell; Clow Clay Nobel; Dickey Clay Prem. Bell		6"	C.I. SV/C.I. NH/ABS/PVC S & D
608-65	6"	Eugene Concrete Bell; Portland Concrete Bell; Salem Concrete Bell; W.R. White Concrete Bell; Cantex Bell I.D. 7.860; Clow Clay Bell; Clow Clay Nobel; Dickey Clay Prem. Bell		6"	C.I. XH/ABS/PVC DWV
610B-45	6"	Uniloc Bore		4"	C.I. XH/ABS/PVC DWV
610-45	6"	U.S. Concrete; Uniloc Clay		4"	C.I. XH/ABS/PVC DWV
610-61	6"	U.S. Concrete; Uniloc Clay		6"	C.I. SV/C.I. NH/ABS/PVC S & D
610X-61	6"	U.S. Concrete; Uniloc Clay Full Dia.; Extra Strength Bell		6"	C.I. SV/C.I. NH/ABS/PVC S & D
614-61	6"	Hermitage/Knoxville Concrete Bell; Pomona Bell I.D. 8.290; Robinson (CLOW) Clay Bell		6"	C.I. SV/C.I. NH/ABS/PVC S & D
646-45	6"	Armco Truss		4"	C.I. XH/ABS/PVC DWV
696-61	6"	Cantex Clay Bell I.D. 8.125; Superior Clay ("O" Ring)		6"	C.I. SV/C.I. NH/ABS/PVC S & D
698-41	6"	Associated Concrete Bell; Bremerton Concrete Bell; Everett Concrete Bell; Brockway Clay Bell; Larson Clay ("O" Ring); Logan Clay ("O" Ring)		4"	C.I. SV/C.I. NH/ABS/PVC S & D
698-45	6"	Associated Concrete Bell; Bremerton Concrete Bell; Everett Concrete Bell; Brockway Clay Bell; Larson Clay ("O" Ring); Logan Clay ("O" Ring)		4"	C.I. XH/ABS/PVC DWV
698-61	6"	Associated Concrete Bell; Bremerton Concrete Bell; Everett Concrete Bell; Brockway Clay Bell; Larson Clay ("O" Ring); Logan Clay ("O" Ring)		6"	C.I. SV/C.I. NH/ABS/PVC S & D

To ensure proper seal, always submit bell, hub or socket dimensions or type of pipe.

Compression Seals



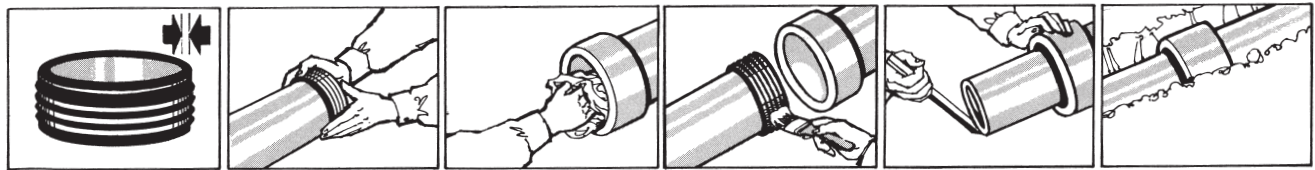
Part No.	Size	Description	To	Size	Description
698-65	6"	Associated Concrete Bell; Bremerton Concrete Bell; Everett Concrete Bell; Brockway Clay Bell; Larson Clay ("O" Ring); Logan Clay ("O" Ring)		6"	C.I. XH/ABS/PVC DWV
898-65	8"	Larson Clay ("O" Ring); Logan Clay ("O" Ring)		6"	C.I. XH/ABS/PVC DWV
898-81	8"	Larson Clay ("O" Ring); Logan Clay ("O" Ring)		8"	C.I. SV/C.I. NH/ABS/PVC S & D
898-85	8"	Larson Clay ("O" Ring); Logan Clay ("O" Ring)		8"	C.I. XH/ABS/PVC DWV
1098-101	10"	Larson Clay ("O" Ring); Logan Clay ("O" Ring)		10"	C.I. SV/C.I. NH/ABS/PVC S & D

Pipe	Connecting With			
	4" SV & NH Soil Pipe PVC S & D	4" XH Soil Pipe ABS/PVC DWV	6" SV & NH Soil Pipe ABS/PVC S & D	6" XH Soil Pipe
4" Brockway Clay Bell	490-41	490-45		
6" Brockway Clay Bell	698-41	698-45	698-61	698-65
4" Cantex Bell I.D. 5.375	404-41	404-45		
6" Cantex Bell I.D. 7.860	608-41	608-45	608-61	608-65
6" Cantex Bell I.D. 8.125				696-65
6" Cantex Bell I.D. 8.250	604-41	604-45	604-41	
4" Clow Clay Bell	408-41	408-45		
6" Clow Clay Bell	608-41	608-45	608-61	608-65
6" Clow Clay Nobel	608-41	608-45	608-61	608-65
4" Dickey Clay Prem. Bell	408-41	408-45		
6" Dickey Clay Prem. Bell	608-41	608-45	608-61	608-65
4" Griffin Clay Bell	432-41	432-45		
6" Griffin Clay Bell	604-41	604-45	604-61	
4" Larson Clay "O" Ring	490-41	490-45		
6" Larson Clay "O" Ring	698-41	698-45	698-61	698-65
4" Larson Clay Wedgelox	404-41	404-45		
6" Larson Clay Wedgelox	604-41	604-45	604-61	
4" Logan Clay "O" Ring	408-41	408-45		
6" Logan Clay "O" Ring	698-41	698-45	698-61	698-65
4" Logan Clay Wedgelox	404-41	404-45		
6" Logan Clay Wedgelox	604-41	604-45	604-61	
6" Pomona Bell I.D. 8.290	614-41	614-45	614-61	
6" Robinson (Clow) Clay Bell	614-41	614-45	614-61	
6" Superior Clay "O" Ring	698-41	698-45	698-61	698-65
4" Superior Clay Wedgelox	404-41	404-45		
6" Superior Clay Wedgelox	604-41	604-45	604-61	
6" U.S. Concrete-Unilox Clay			610-61	
6" U.S. Concrete-Unilox Clay (Full Diameter Extra Strength Bell)			610X-61	
6" Associated Concrete Bell	698-41	698-45	698-61	698-65
6" Bremerton Concrete Bell	698-41	698-45	698-61	698-65
6" Eugene Concrete Bell	608-41	608-45	608-61	608-65
6" Everett Concrete Bell	698-41	698-45	698-61	698-65
4" Hermitage/Knoxville Concrete Bell	440-41	440-45		
6" Hermitage/Knoxville Concrete Bell	614-41	614-45	614-61	
4" Houston Concrete	404-41	404-45		
6" Portland Concrete Bell	608-41	608-45	608-61	608-65
6" Salem Concrete Bell	608-41	608-45	608-61	608-65
4" Sherman Concrete Bell	432-41	432-45		
6" Sherman Concrete Bell	604-41	604-45	604-61	
6" W.R. White Concrete Bell	608-41	608-45	608-61	608-65

Installation Methods

It is important to bear in mind that as much as 30 psi should be exerted on the sealing surfaces during installation, because the actual seal is achieved by compression against the two surfaces. For best results, always include the dimensions of the pipe manufacturer with your order. Finally, if a compression seal fits into joining pipe end with little or no resistance, a bad joint can result; please contact Indiana Seal Company if this should ever occur.

Push Method



For size to size connections when compression seal is less than $\frac{3}{8}$ " thick.

Push seal over plain spigot of the upstream pipe.

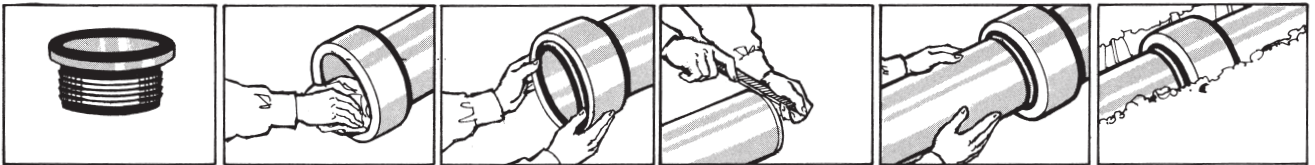
Remove all dirt and debris from bell end of joining pipe.

Coat compression seal with soap solution, and place in bell.

Using a lever, push seal and spigot until it bottoms in downstream pipe.

Test according to job specifications. Pressure test (4.3 psi maximum) before backfilling.

Stab Method



Used when making size to size connection of soil pipe and cast iron pipe.

Remove all dirt and debris from bell of pipe.

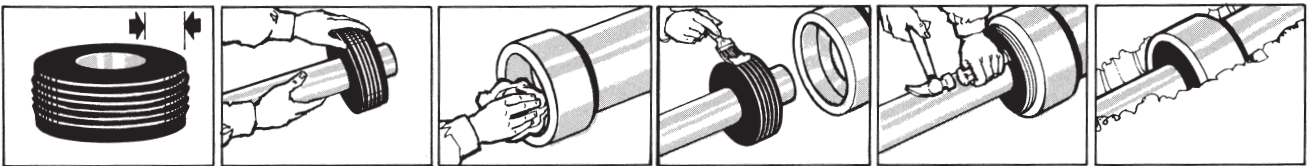
Insert compression seal to full depth in hub of pipe.

Bevel spigot end and lubricate with soap solution.

Using a tool or by hand, force the spigot fully in, until it bottoms in the hub.

Test according to job specifications. Pressure test (4.3 psi maximum) before backfilling.

Drive Method



Used when the thickness of the compression seal wall is $\frac{3}{8}$ " or greater.

Push plain spigot end of pipe through compression seal, leaving $\frac{1}{2}$ " of spigot end exposed.

Remove all dirt and debris from bell of pipe.

Coat outside of compression seal with soap solution.

Insert into bell opening, and drive until compression seal is fully seated.

Test per job specifications. Pressure test (4.3 psi maximum) before backfilling.



A **GPK PRODUCTS** Company

www.Indiana-Seal.com

1601 43rd Street N • Fargo, North Dakota 58102

Toll Free: 1.800.437.4670 • Fax: 1.800.822.6989