

PRODUCT INFORMATION PACKET

FASCO[®]

Model No:
Catalog No: A157
70581227.BLOWER...1 SPD.
Draft Inducer



Regal and Fasco are trademarks of Regal Beloit Corporation or one of its affiliated companies.
©2019 Regal Beloit Corporation, All Rights Reserved. MC017097E

REGAL[®]



Nameplate Specifications

Voltage	115 V	Motor Type	Shaded Pole
Overload Protector	Thermally	Speed	3000 RPM
Current	1.3 A	Number of Speeds	1
Frequency	60 Hz	Phase	1
Ambient Temperature	40 °C	UL	Yes
Insulation Class	B	CSA	Yes

Technical Specifications

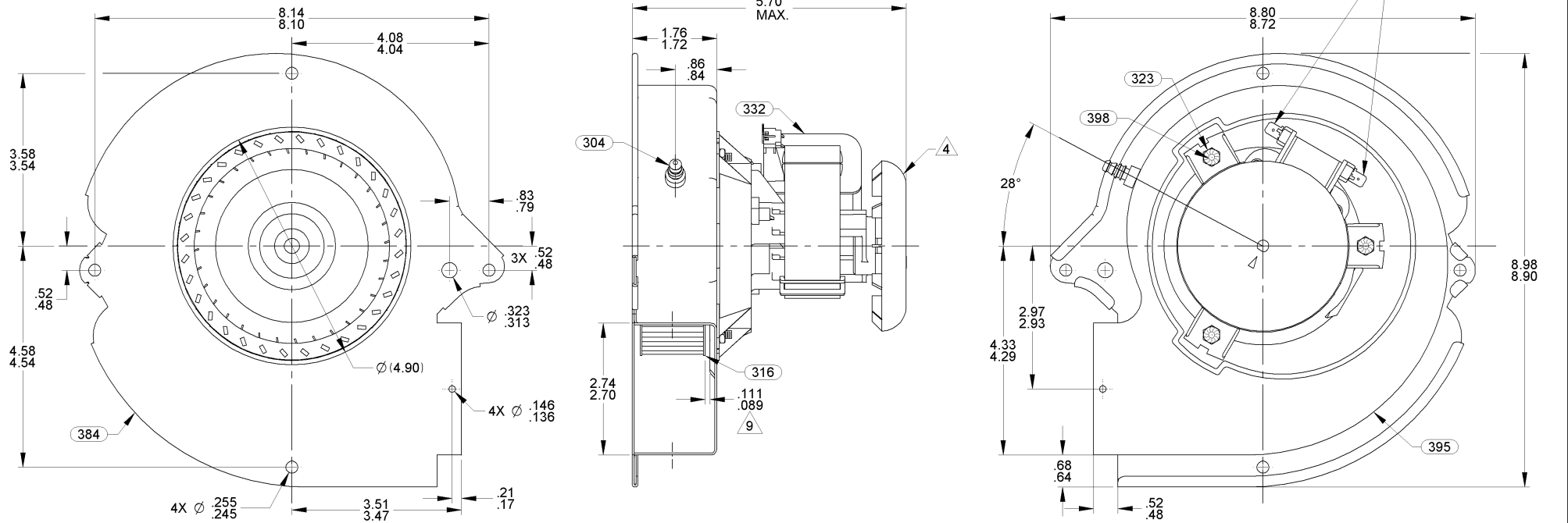
Blower Outlet Shape	Rectangle	Motor Enclosure	Open
Blower Outlet Flange	No	Bearing Type	Ball
Outline Drawing	OUTLINE	Connection Diagram	CONNECTION

This is an uncontrolled document once printed or downloaded and is subject to change without notice. Date Created: 09/25/2019

NOTES:

1. COLD WINDING RESISTANCE: 8.2 OHMS AT 23°C.
2. THERMAL PROTECTED RATING: 120°C T.I. P/N 7AM211A5.
3. BLOWER HOUSING: ALUMINIZED STEEL (NO PAINT)
4. RUNOUT ON REAR COOLING FAN MUST NOT EXCEED 5.70 MAXIMUM OVERALL LENGTH DIMENSION. FAN RUNOUT NOT TO EXCEED ± .050.
5. REAR COOLING FAN MATERIAL: RTP 199X66833. FAN IS SECURED TO SHAFT WITH SPLIT "D" SHAPED HUB AND STEEL COMPRESSION RING.
6. BECKET AIR WHEEL P/N F120-34S.
7. IMPELLER HUB MATERIAL: STEEL
8. BLOWER WHEEL SET SCREW MUST HAVE PLAIN CUP POINT.
9. IMPELLER LOCATION MEASURED FROM INSIDE OF MOTOR SHELL ON DISHED AREA TO BACK OF IMPELLER.
10. TORQUE IMPELLER SET SCREW TO BE 60 IN/LB.
11. INSPECTION TEST FIXTURE IS REQUIRED.
12. STATIC TAP READING TO BE -1.26 TO -1.63 CORRECTED TO STANDARD AIR (0.075 LB/FT³) WITH A 1 5/16" INLET RESTRICTOR.
13. PACK 1 PER CONTAINER, 12 CONTAINERS PER LAYER, 4 LAYERS PER PALLET, 48 MAX. PER PALLET, PACKING ASSY. 87855084, P.S. 88834200 AND P.S. 88834408.
14. CARTON LABELS MUST ALL FACE ONE DIRECTION TOWARD THE OPEN END OF THE PALLET. SEE P.S. 88834408.
15. NO PACKAGING TAPE OVER CARTON LABEL.

APPLICATION	DIST.							B	LA	FR	A	S	C	E	B	A	
	THERMALLY PROTECTED CLASS "B" INSULATION SEALED BALL BEARING 416 S.S. SHAFT							GS	58	48	X	17	AU	5	0	0	
CUSTOMER	FASCO DIST.																
CUSTOMER PART NO.	A157																



TYPICAL PERFORMANCE TEST DATA WITH 1 5/16 INCH INLET RESTRICTOR

ECO. NO.	REV.	DATE	APPROVAL	AT	115 VOLTS	60 HZ.	R.P.M.	WATTS	AMPS
4003552	04	10/26/11	PLA/SED				3163	64	1.04
4004075	05	12/16/11	MLM/SED						
4008105	06	5/14/2013	SDM/BGP						
4010097	07	8/21/2013	SDM/PLA						
				BLOWER WEIGHT					END PLAY
				4.75	LBS.				.XX/XX

UNLESS OTHERWISE SPECIFIED DIMENSIONS ARE IN INCHES TOLERANCES ARE:	
FRACTIONS ± 1/16	DECIMALS .XX ± .01 .XXX ± .005
ANGLES ± 1°	
APPROVALS	DATE
DRAWN BGP	03/26/2009
CHECKED PLA	03/26/2009
FINISH COLOR	NATURAL

FASCO FASCO MOTORS GROUP
AC MOTOR/BLOWER DIVISION

CONFIDENTIAL: DO NOT DUPLICATE OR DISCLOSE TO THIRD PARTIES WITHOUT WRITTEN PERMISSION OF FASCO MOTORS GROUP, AC MOTOR/BLOWER DIVISION.

TITLE: **BLOWER ASSEMBLY**

SIZE: **B** DWG. NO.: 7058 1227 REV. 07

DO NOT SCALE DRAWING SHEET 1 OF 1