

PRODUCT INFORMATION PACKET

FASCO[®]

Model No:
Catalog No: A223
702111698.BLOWER...1 SPD..
Draft Inducer



Regal and Fasco are trademarks of Regal Beloit Corporation or one of its affiliated companies.
©2019 Regal Beloit Corporation, All Rights Reserved. MC017097E

REGAL[®]



Nameplate Specifications

Voltage	208-230 V	Motor Type	Shaded Pole
Overload Protector	Thermally	Speed	3200 RPM
Current	0.64 A	Number of Speeds	1
Frequency	60 Hz	Phase	1
Ambient Temperature	40 °C	UL	Yes
Insulation Class	B	CSA	Yes

Technical Specifications

Blower Outlet Shape	Rectangle	Motor Enclosure	Open
Blower Outlet Flange	No	Bearing Type	Sleeve
Outline Drawing	OUTLINE	Connection Diagram	CONNECTION

This is an uncontrolled document once printed or downloaded and is subject to change without notice. Date Created: 09/25/2019

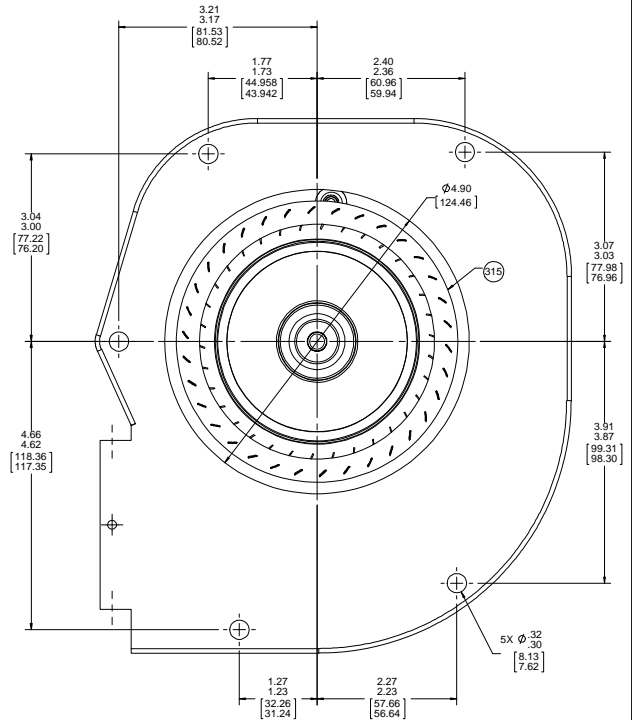
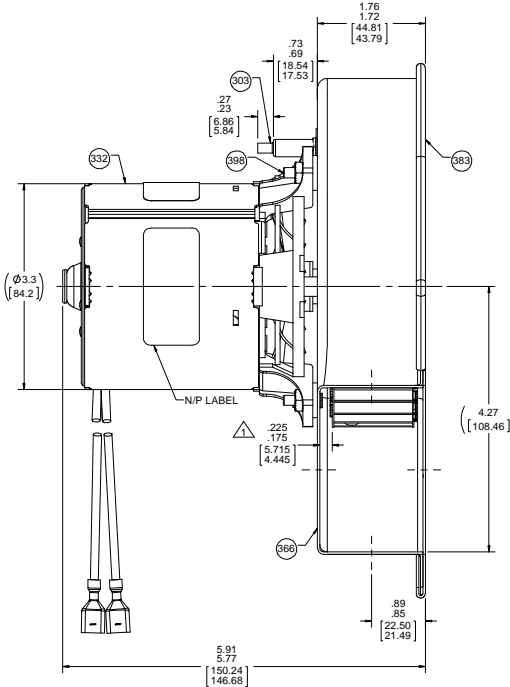
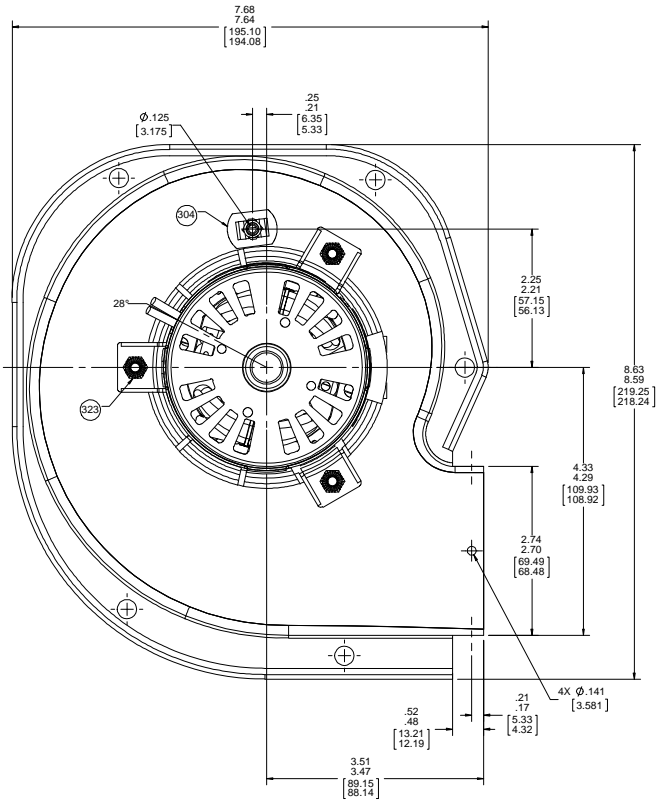
THERMALLY PROTECTED
CLASS "B" INSULATION
416 SS SHAFT

APPLICATION:	DISTRIBUTION	B	LA	FR	A	S	C	E	B	A
CUSTOMER:	FDC	GS	21	47	V	04	AX	5	3	0
CUSTOMER PN:	A223	FINISH: BLOWER-NATURAL, MOTOR-FLAT BLACK								

LEAD MATERIAL
18 GA. 125° 4/64 INSUL.
EPDM (1) BLACK, (1) PURPLE
34.00/32.00 (86.3/80/812.80)
W/SPADE TERM.
AMP 2-520263-2

NOTES:

1. DIMENSION WITH END PLAY PUSHED TOWARD MOTOR FROM INSIDE OF HOUSING.
2. INSPECTION TEST FIXTURE IS REQUIRED.
3. STATIC TAP READING IS TO BE 1.22 MINIMUM CORRECTED TO STANDARD AIR (0.075 LB/FT³) WITH A 1 5/16 INLET RESTRICTOR.
4. PACK 1 PER CONTAINER, 16 CONTAINERS PER LAYER, 5 LAYERS PER PALLET, 80 MAX. PER PALLET, PACKING ASSY. 87854335, PER 88834200 AND 88834408.
5. CARTON LABELS MUST ALL FACE ONE DIRECTION TOWARD THE OPEN END OF THE PALLET. SEE 88834408.
6. NO PACKAGING TAPE OVER CARTON LABEL.



AVERAGE PERFORMANCE TEST DATA
WITH A 1 5/16 INLET RESTRICTOR

AT 230 VOLTS 60 Hz

	RPM	WATTS	AMPS
	3375	81.3	.60
BLOWER WEIGHT			
	4 1/2 LBS.		
ENDPLAY	030/010		
	[.762/.254]		

DRAWING REVISION	REVISION BY	DATE	TOLERANCES UNLESS OTHERWISE SPECIFIED	DRAWN BY	ML
AA	MLS	9/18/2018	ASD. .001	DATE	9/18/2018
ECO-0152882	APPROVED BY	DATE	XXX .001	APPROVED BY	FDP
ECO-0152882	FDP	9/18/2018	XXXX .0005	DATE	9/18/2018
REDRAWN TO SOLEWORKS			REMOVE BURRS & BREAK SHARP EDGES. 0.001 (0.0254) X 45° CORNER FILLETS R.01 (0.254)	OUTLINE BLOWER ASSY	
REGAL BELLOI AMERICA, INC. COMPANY AND CUSTOMER PROPERTY. THIS DRAWING IS THE PROPERTY OF REGAL BELLOI AMERICA, INC. AND IS NOT TO BE REPRODUCED OR TRANSMITTED IN ANY FORM OR BY ANY MEANS, ELECTRONIC OR MECHANICAL, INCLUDING PHOTOCOPYING, RECORDING, OR BY ANY INFORMATION STORAGE AND RETRIEVAL SYSTEM, WITHOUT PERMISSION IN WRITING FROM REGAL BELLOI AMERICA, INC.			FINISH SHOWN IN BRACKETS	Regal Beloit America, Inc.	
MATERIAL			THIRD ANGLE PROJECTION	PROCESS/FINISH	
DRAWING NUMBER			SIZE	DRAWING NUMBER	
702111698			D	702111698	
SHEET			1 OF 1		