

PRODUCT INFORMATION PACKET

FASCO[®]

Model No:
Catalog No: A241
702111706.BLOWER...1 SPD.
Draft Inducer



Regal and Fasco are trademarks of Regal Beloit Corporation or one of its affiliated companies.
©2019 Regal Beloit Corporation, All Rights Reserved. MC017097E

REGAL[®]



Nameplate Specifications

Voltage	208-230 V	Motor Type	Shaded Pole
Overload Protector	Thermally	Speed	2800/3200 RPM
Current	0.56/0.65 A	Number of Speeds	1
Frequency	50/60 Hz	Phase	1
Ambient Temperature	40 °C	UL	Yes
Insulation Class	B	CSA	Yes

Technical Specifications

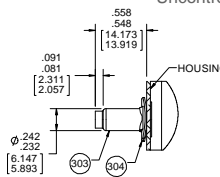
Blower Outlet Shape	Rectangle	Motor Enclosure	Open
Blower Outlet Flange	No	Bearing Type	Ball
Outline Drawing	OUTLINE	Connection Diagram	CONNECTION

This is an uncontrolled document once printed or downloaded and is subject to change without notice. Date Created: 09/25/2019

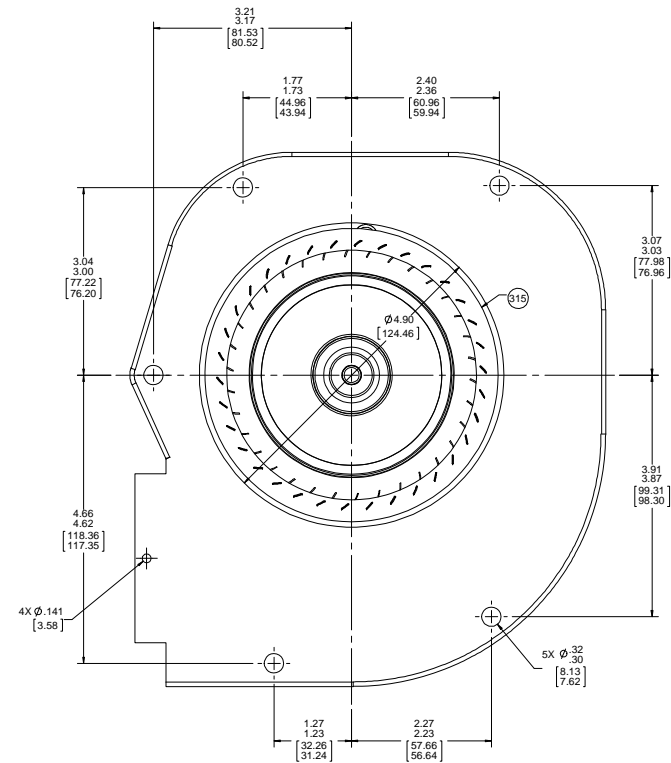
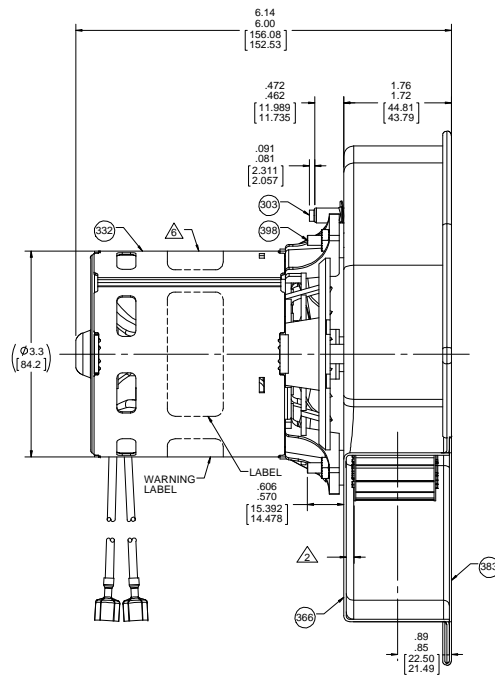
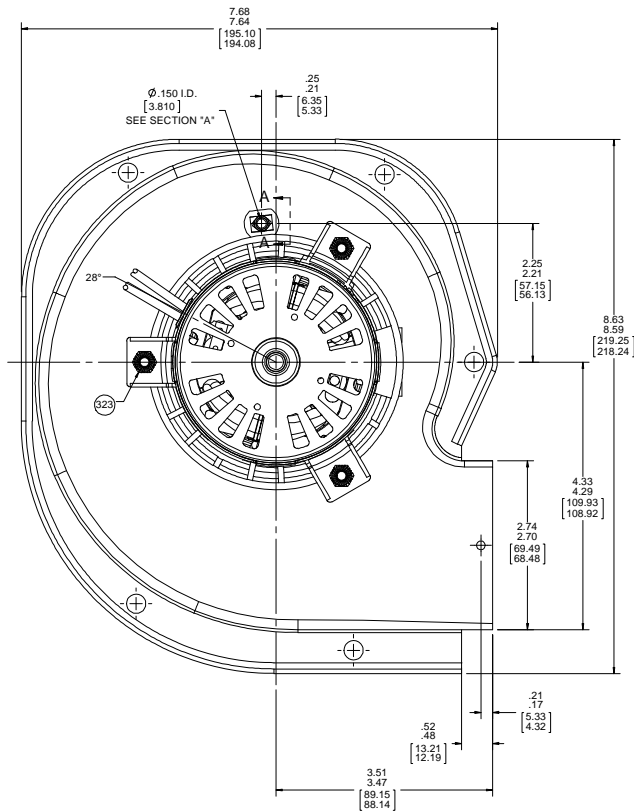
THERMALLY PROTECTED
CLASS "B" INSULATION
416 SS SHAFT

APPLICATION:	DISTRIBUTION	B	LA	FR	A	S	C	E	B	A
CUSTOMER:	FASCO DIST.	GS	21	47	V	05	CL	5	0	0
CUSTOMER PN:		A241								

- NOTES:**
1. IMPELLER MATERIAL: ALUMINIZED STEEL.
 2. DISTANCE FROM INSIDE OF HOUSING TO BLOWER WHEEL IS .160/100 [4.064/2.540] WITH WHEEL PULLED AS CLOSE TO INLET AS SHAFT ENDPLAY ALLOWS.
 3. INSPECTION TEST FIXTURING IS REQUIRED.
 4. STATIC TAP READING IS TO BE $-1.35"$ MINIMUM CORRECTED TO STANDARD AIR (0.075 LB/FT³) WITH A 1/5/16 INLET RESTRICTOR
 5. GASKET NO. 68-23643-01-01, FASCO PN 86804163 TO BE INCLUDED WITH EACH BLOWER.
 6. APPLY PC 373 LABEL TO MOTOR 90° FROM OIL HOLE.
 7. SERIAL NUMBER.
 8. PACK 1 PER CONTAINER, 9 CONTAINERS PER LAYER, 4 LAYERS PER PALLET, 36 MAX. PER PALLET, PACKING ASSY. 87854714, PER 88834200 AND 88834408.
 9. CARTON LABELS MUST ALL FACE ONE DIRECTION TOWARD THE OPEN END OF THE PALLET. SEE 88834408.
 10. NO PACKING TAPE OVER CARTON LABEL.
 11. BLOWER - NATURAL MOTOR - FLAT BLACK.



SECTION A-A



61305275

FASCO No. 70211706

Assembled in Mexico
Model A241

AVERAGE PERFORMANCE TEST DATA WITH 1 5/16 INLET RESTRICTOR			
AT 230 VOLTS 60 Hz			
RPM	WATTS	AMPS	
3377	77.2	.56	
BLOWER WEIGHT 5 LBS.			
ENDPLAY .XX/XX			

DRAWING REVISION	REVISION BY	MLS	DATE	TOLERANCES UNLESS OTHERWISE SPECIFIED:	DRAWN BY	MLS	Regal Beloit America, Inc.
ECO-0144295	LA	BAA	05/17/2018	FRACTIONAL DECIMAL ANGLES	DATE	6/8/2016	
DESCRIPTION:				DESCRIPTION:			
UPDATED BLOWER PACKING				OUTLINE BLOWER ASSY			
MATERIAL				MATERIAL			
FINISH				FINISH			
MACHINED SURFACES				MACHINED SURFACES			
DIM SHOWN IN BRACKETS				DIM SHOWN IN BRACKETS			
THIRD ANGLE PROJECTION				THIRD ANGLE PROJECTION			
DRAWING NUMBER				DRAWING NUMBER			
70211706				70211706			
SHEET				SHEET			
1 OF 1				1 OF 1			