

MODEL 375AST

Stainless Steel Reduced Pressure Principle – Backflow Preventers 375AST (2 1/2" to 10")



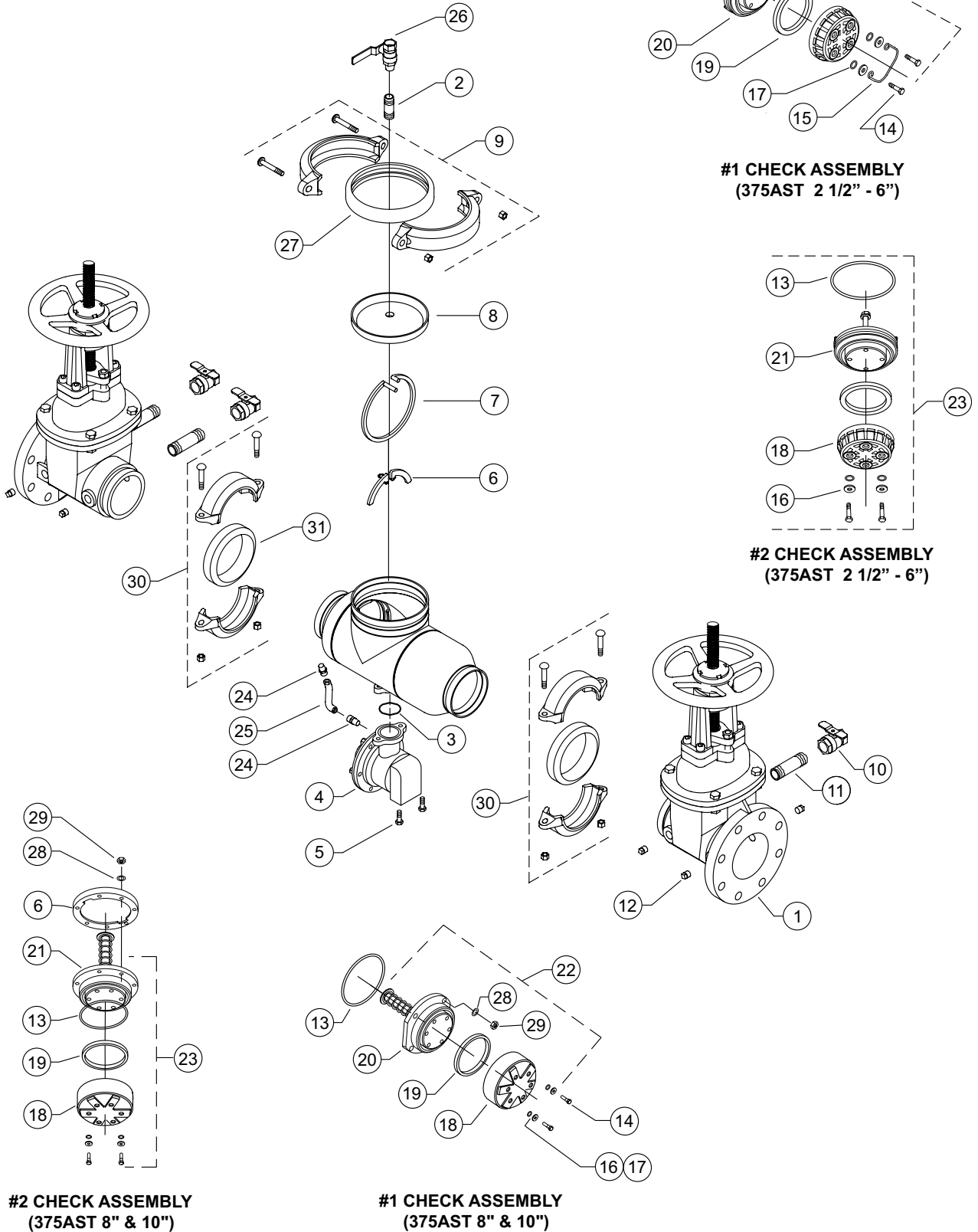
Item Number	Description	2 1/2"	3"	4"	6"	8"	10"
1	GATE VALVE, NRS	212-48GXF	3-48GXF	4-48GXF	6-48GXF	8-48GXF	10-48GXF
	GATE VALVE, OS&Y	212-48OSYGXF	3-48OSYGXF	4-48OSYGXF	6-48OSYGXF	8-48OSYGXF	10-48OSYGXF
	BUTTERFLY VALVE	212-49GVIC	3-49GVIC	4-49GVIC	6-49GVIC	8-49GVIC	10-49GVIC
2	NIPPLE	N/A	N/A	N/A	102-21B	N/A	N/A
3	O-RING, CONTROL UNIT	032N	032N	032N	032N	142N	142N
4	RELIEF VALVE ASSY	3707-CU-XL	3707-CU-XL	3707-CU-XL	3707-CU-XL	3711-CU-XL	3711-CU-XL
5	BOLT, RELIEF VALVE	BR4-11SS	BR4-11SS	BR4-11SS	BR4-11SS	957-11	957-11
6	SEAT RETAINER #2	3509ST-140	3509ST-140	3509ST-140	3510ST-140	3511-14DSS	3511-14DSS
7	SEAT RETAINER #1	3509ST-14B	3509ST-14B	3509ST-14B	3510ST-14B	N/A	N/A
8	COVER	3509ST-3	3509ST-3	3509ST-3	3510ST-3	3511ST-3	3511ST-3
9	COVER RETAINER ASSY	6-23	6-23	6-23	8-23	12-23	12-23
10	BALL VALVE	12-850XL	12-850XL	12-850XL	34-850XL	34-850XL	34-850XL
11	NIPPLE, LONG	12X3-21B	12X3-21B	12X3-21B	34X3-21B	34X3-21B	34X3-21B
12	PLUG	558-7	558-7	558-7	5510-7	5510-7	5510-7
13	O-RING	351N	351N	351N	364N	273N	273N
14	BOLT, POPPET RETAINER	558-11E	558-11E	558-11E	5510-11A	3511-11	3511-11
15	HANDLE, #1 POPPET ASSY	3509-6	3509-6	3509-6	3510-6	N/A	N/A
16	WASHER	3509-14C	3509-14C	3509-14C	3510-14C	3510-14C	3510-14C
17	O-RING	WK-109N	WK-109N	WK-109N	204N	204N	204N
18	POPPET RETAINER	3509ST-14	3509ST-14	3509ST-14	3510ST-14	3511ST-14	3511ST-14
19	SEAL RING	3509-12	3509-12	3509-12	3510-12	3511-12	3511-12
20	SEAT ASSEMBLY, #1 POPPET	3709ST-180	3709ST-180	3709ST-180	3710ST-180	3711ST-180	3711ST-180
21	SEAT ASSEMBLY, #2 POPPET	3507ST-180	3509ST-180	3509ST-180	3510ST-180	3511ST-180B	3512ST-180B
22	#1 CHECK ASSEMBLY	3709ST-300	3709ST-300	3709ST-300	3710ST-300	3711ST-300A	3711ST-300A
23	#2 CHECK ASSEMBLY	3507ST-300B	3509ST-300B	3509ST-300B	3510ST-300B	3511ST-300B	3512ST-300B
24	SENSING TUBE FITTING	5758A-36	5758A-36	5758A-36	5758A-36	5758A-36	5758A-36
25	SENSING TUBE	3707-36	3707-36	3707-36	3709-36	3710-36	3710-36
26	BALL VALVE	12-850MXL	12-850MXL	12-850MXL	34-850XL	34-850XL	34-850XL
27	GASKET, COVER RETAINER	6-23-13	6-23-13	6-23-13	8-23-13	12-23-13	12-23-13
28	WASHER	N/A	N/A	N/A	N/A	3511-14E	3511-14E
29	NUT	N/A	N/A	N/A	N/A	3511-9	3511-9
30	GROOVED COUPLING	212-23	3-23	4-23	6-23	8-23	10-23
31	COUPLING GASKET	212-23-13	3-23-13	4-23-13	6-23-13	8-23-13	10-23-13

Repair Kit

RK4-350			RK6-350			RK8-350		
Size 2-1/2"-4"			Size 6"			Size 8", 10"		
Part Number	Qty.	Description	Part Number	Qty.	Description	Part Number	Qty.	Description
3509-12	2	SEAL RING	3510-12	2	SEAL RING	3511-12	2	SEAL RING
351N	2	O-RING	364N	2	O-RING	273N	2	O-RING
WK-109N	8	O-RING	204N	8	O-RING	204N	12	O-RING
353N	2	Not used in 350AST						

MODEL 375AST – 2-1/2" to 10"

Parts Drawing



MODEL 375, 375A, 375AST, 475 and 475V

Relief Valve – 2-1/2" to 10"



RELIEF VALVE COMPLETE 3707-CU-XL 3711-CU-XL

Item Number	Description	Qty.	2-1/2"-6"	Qty.	8" and 10"
1	BOLT, COVER	6	554-11A	8	957-11
2	O-RING	1	222N	1	227N
3	UPPER PLUNGER	1	3707-34	1	3711-34
4	DIAPHRAGM	1	3707-43	1	3711-43
5	LOWER PLUNGER	1	3707-34A	1	3711-34A
6	SEAL RING	1	3707-12	1	3711-12
7	SEAL RETAINER	1	3707-14	1	3711-14
8	SCREW	1	558-11E	1	558-11E
9	CU SPRING	1	3707-33A	1	3711A-33
10	CU SEAT	1	3707-18	1	3711-18
11	O-RING	1	032N	1	146N
12	WASHER	1	N/A	1	3707-14
13	STEM ASSY.	1	3707-50	1	3711-50
14	O-RING	1	032N	1	142N

Repair Kit, Rubber

RK212-375R **RK8-375R**
 Size 2-1/2"-6" Size 8" and 10"

Item Number	Description	Qty.	Part Number	Part Number
6	SEAL RING	1	3707-12	3711-12
4	DIAPHRAGM	1	3707-43	3711-43
2	O-RING	1	222N	227N
11	O-RING	1	032N	146N
14	O-RING	1	032N	142N

Repair Kit, Complete

RK212-375 **RK8-375**
 Size 2-1/2"-6" Size 8" and 10"

Item Number	Description	Qty.	Part Number	Part Number
N/A	REPAIR KIT, RUBBER	1	RK212-375R	RK8-375R
9	SPRING	1	3707-33A	3711A-33

