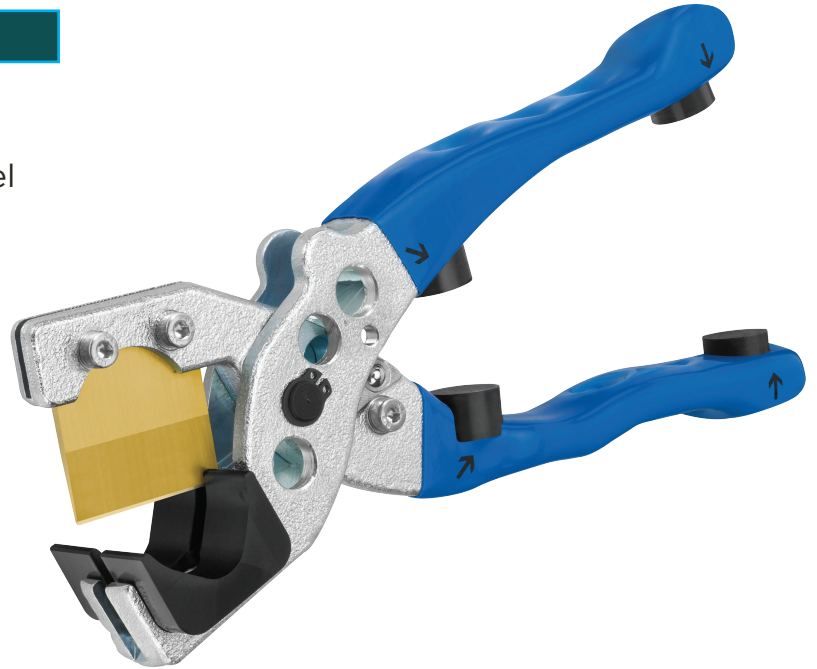


ADVANTAGES FOR YOU:

- Depth of cut limiter
- Blade made of specially hardened steel with a titanium nitride (TiN) coating
- Wide pipe rest for particularly straight cuts
- Ball lock prevents inadvertent opening of the cutters
- Blade “made in Solingen”
- Forged shanks
- Fully galvanized tool



Enables short lengths of pipe to be firmly gripped using the rear stoppers where space is restricted, e.g. in wall-mounted installations. The outer pipe is not damaged.



No wrist strain: low jolt transmission thanks to the damping effect of the rubber stoppers.



Compound pipes are firmly held using rubber stoppers thanks to the optimized lever effect. The outer pipe is not damaged.



Simple blade changing.

ADVANTAGES FOR YOU:

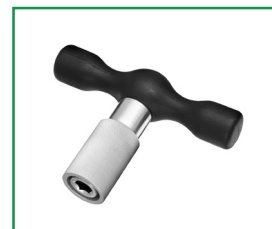
Sizing and chamfering tool for manual or powered use for 4 operations with a single tool.

1. **Optimized calibration**
2. **Defined chamfering of the inner pipe end**
3. **Pipe ends straightened**
4. **Outer deburring**

- For powered (max. 500 r.p.m.) and manual use
- Unique chip-chamber above the cutter collects all the deburring residues
- Made entirely of stainless steel to provide optimum cutting characteristics
- Safe, rapid processing of YogaPipe
- Optimized pipe calibration using stainless steel mandrel
- Simultaneous chamfering of inner pipe, straightening and outer deburring
- Protective sleeve made of special-purpose plastic for longer lifetime
- Highest levels of security for O-ring seals:
 - *No twisting or deformation of O-ring seals.*
 - *No ejection of the O-ring from its groove thanks to defined chamfer inside the pipe.*
 - *O-ring cannot be damaged by burr residues.*
 - *Mandrel cutters made of stainless steel guarantee extended lifetime.*



FOR POWERED USE
(max 500 r.p.m)



FOR MANUAL USE

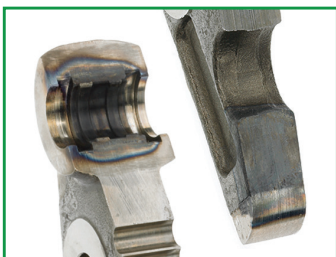
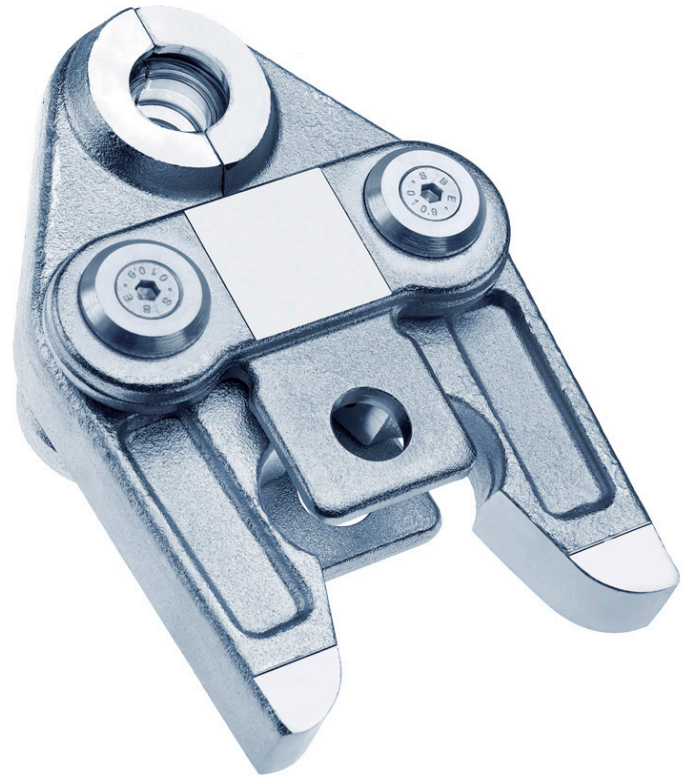


**OPTIMIZED
CHIP REMOVAL**
for uninterrupted
sizing and chamfering

ADVANTAGES FOR YOU:

Press jaws for standard press machines

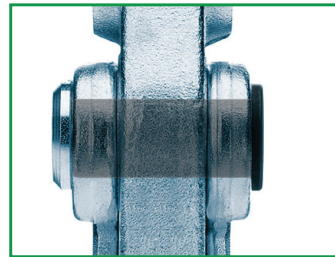
- Maximum pressing accuracy thanks to synchronization
- Permanently sealed joints due to high-precision pressing contour
- Clear marking makes system and size identification easy
- Compact construction for easy access even in awkward places
- High durability of the pressing jaws due to the use of high-grade surface
- *finishes—fully galvanized (silver color) or phosphated (black)*



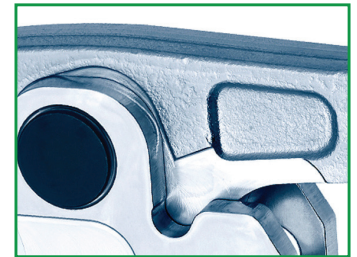
**PARTIAL, DOUBLE
INDUCTION HARDENING**



SYNCHRONIZATION



**PINS WITHOUT POTENTIAL
WEAK POINTS**

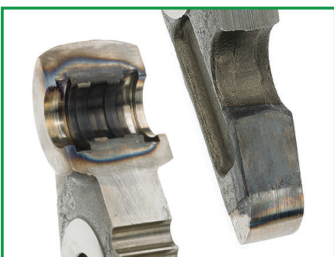


FORGED COMPONENTS

ADVANTAGES FOR YOU:

Light-weight press-fitting tool specially for mini press machines

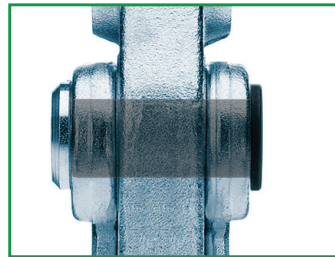
- Maximum pressing accuracy thanks to synchronization
- Permanently sealed joints due to high-precision pressing contour
- Clear marking makes system and size identification easy
- Compact construction for easy access even in awkward places
- High durability of the pressing jaws due to the use of high-grade surface
- *finishes—fully galvanized (silver color) or phosphated (black)*



**PARTIAL, DOUBLE
INDUCTION HARDENING**



SYNCHRONIZATION



**PINS WITHOUT POTENTIAL
WEAK POINTS**



FORGED COMPONENTS