

FURNACE INFORMATION AND SELECTION

Furnace Dimensions: 77¹/₂" High x 19³/₄" Wide x 25" Deep

STEP ONE: Furnace Size and Blower Selection

Model Number	BTUH Input/Output	BLOWER SELECTION w/NOMINAL CFMs & TONS @ .2 ESP	
		-E3B	-E5B
MGD60	60,000/48,000	3 Speed Blower	4 Speed Blower
MGD70	70,000/56,000	1240* CFM	1660* CFM
MGD77	77,000/61,600	2 - 3.5 Tons	3 - 5 Tons**
MGD90	90,000/72,000	1/3 HP	3/4 HP

* Air ratings at high speeds with coil and filter in place.

** Recommend A/C lower speed set at MED-HI or below due to potential A-coil water blow-off.
All gas furnaces set for natural gas. Furnace includes LP orifice for conversion.

STEP TWO: Roof Jack and Accessory Selection based on Furnace Location & Roof Type



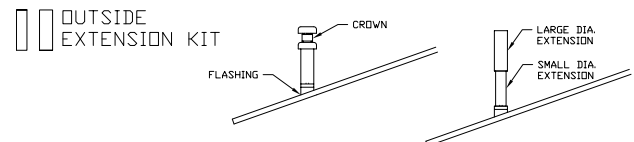
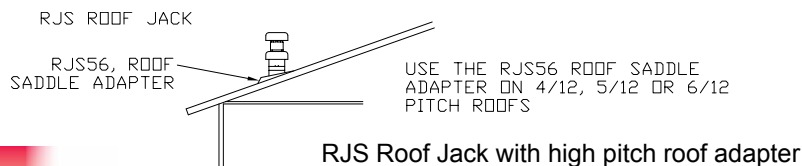
WARNING: All units must be installed utilizing factory accessories as indicated below. DO NOT reuse existing flue components and/or accessories. Failure to comply with this warning will invalidate certification, which may make the installation illegal and may result in unsafe operation, explosion, and/or fire or asphyxiation.

ROOF JACK: Distance from FLOOR of home to where ROOF JACK meets the ROOFING MATERIAL=Dimension "A"

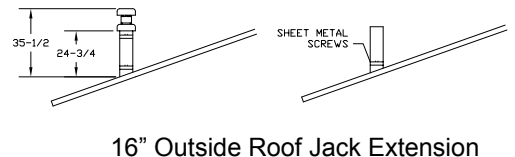
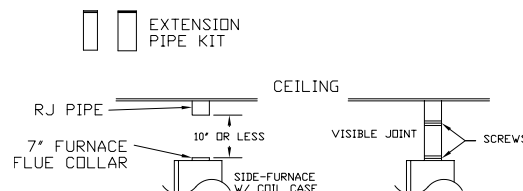
These Roof Jacks **MUST BE USED** to complete the installation.

Part Number	Adjustable Height Added To Furnace Height (In.)	Roof	"A" Dimension (In.)
90-RJF1729-AL	17 to 29	Flat	94 ¹ / ₂ to 106 ¹ / ₂
90-RJF2551-AL	25 to 51	Flat	102 ¹ / ₂ to 128 ¹ / ₂
90-RJS1729-AL	17 to 29	3/12 Slope	94 ¹ / ₂ to 106 ¹ / ₂
90-RJS2551-AL	25 to 51	3/12 Slope	102 ¹ / ₂ to 128 ¹ / ₂
90-RJS3868-AL	38 to 68	3/12 Slope	115 ¹ / ₂ to 145 ¹ / ₂
90-RJS6399-AL	63 to 99	3/12 Slope	140 ¹ / ₂ to 176 ¹ / ₂

Accessories REQUIRED with Each Roof Jack	
90-RJCRWN-AL	Crown (Vent/Intake Cap)
R75GF0001	Roof Jack Sealant
Optional Roof Jack Accessories	
90-TRM-RNG	Ceiling Trim Ring
90-RJTRC	Transit Kit
90-RJS56	5-6/12 Slope Saddle Adapter
90-OUTXT16-AL	Outside Roof Jack 16" Ext-Gas
90-INSXT10-AL	Inside Roof Jack 10" Ext-Gas



10"L Inside Extension for RJ-Roof Jack
NOTE: Field assembled joints will be visible below ceiling



STEP THREE: Purchase proper Duct Connector, if existing connector is unsuitable

Duct Connection Adjustable Style	Depth—Home Floor To Duct Surface	Duct Connector	Furnace Base
90-DCU0-01	1" to 4"	86AA0013 +	87FB0005
90-DCU0-02	6" to 8"	86AA0014 +	87FB0005
90-DCU0-03	8" to 12"	86AA0015 +	87FB0005

FURNACE INFORMATION AND SELECTION

CLEARANCES

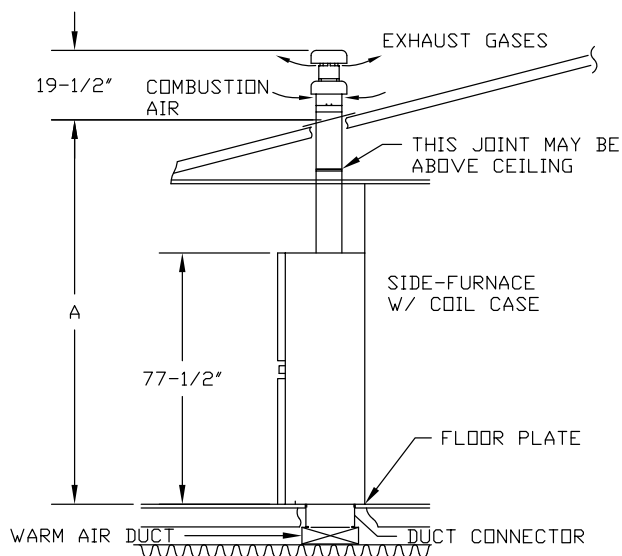
Top.....	6 in.
Sides.....	0 in. *
Back.....	0 in. *
Alcove—front of furnace.....	18 in.
Closet—front of furnace.....	6 in. **
Duct	0 in.
Vent/Roof Jack	0 in.

* If the return air opening is below the top of the furnace, clearance to the side or rear must be 6".

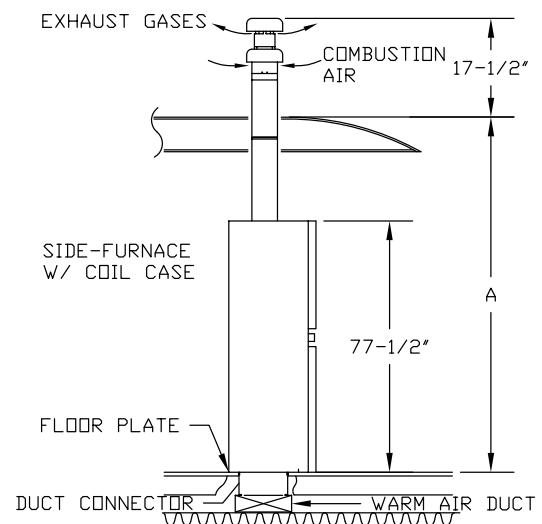
**See Return Air for clearances for less than 6".

SELECT SEALED COMBUSTION ROOF JACK (REQUIRED)

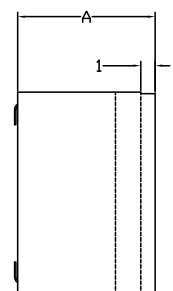
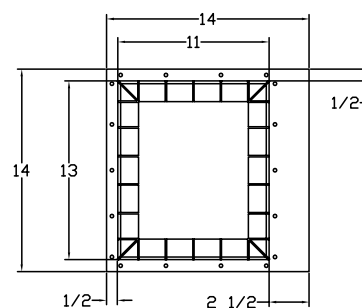
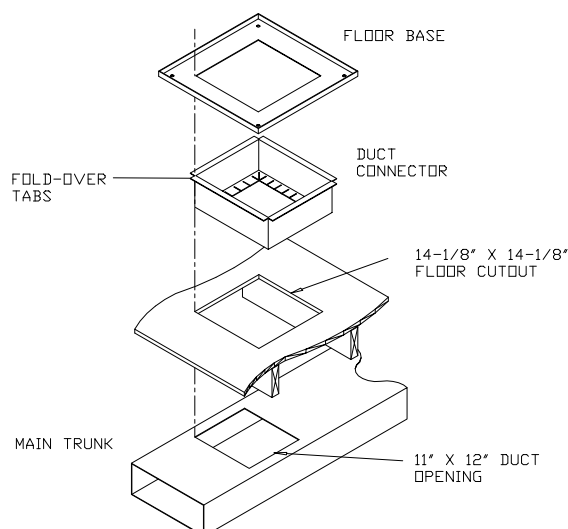
3/12 Pitch Roof



Flat-Bow Rafter Roof



87FB0005 FURNACE BASE AND 86AA001 (X) DUCT CONNECTOR — FLOOR TO DUCT SURFACE



DIMENSION	A
86AA0013	4 1/2"
86AA0014	8 1/4"
86AA0015	12 1/4"

MGD-B SERIES FURNACES

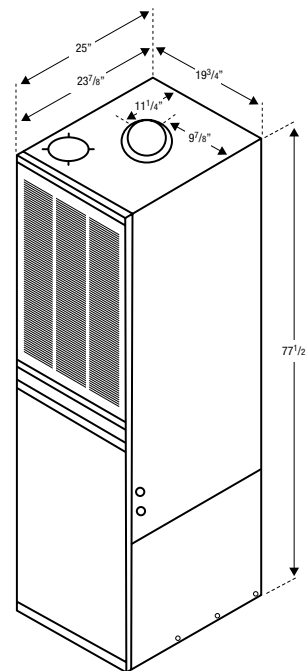
BLOWER PERFORMANCE

ESP, In. W.C. DUCT	0.1	0.2	0.3	0.4	0.5
3 BLOWER—10x8, 1/3 HP, 3 Speed					
CFM—No Coil LO	980	950	910	875	825
“ MED	1220	1170	1120	1065	1015
“ HI	1460	1400	1340	1270	1195
CFM—With Coil LO	945	905	865	815	775
“ MED	1130	1085	1030	970	905
“ HI	1300	1240	1180	1105	1035
5 BLOWER—10x8, 3/4 HP, 4 Speed					
CFM—No Coil LO	995	960	915	875	825
“ MED	1205	1165	1130	1090	1045
“ MED HI	1470	1425	1385	1345	1310
“ HI	1810	1765	1720	1680	1635
CFM—With Coil LO	950	905	865	835	790
“ MED	1145	1115	1080	1035	1000
“ MED HI	1375	1345	1315	1280	1245
“ HI	1700	1660	1620	1575	1540

MODEL IDENTIFICATION

M	G	D	70	-	E	3	B
Manufactured Home	Gas	Downflow	BTUH Input X1000		Electronic Hot Surface Ignition	Blower 3=1/3HP, 3 Spd 5=3/4HP, 4 Spd	Revision Level

DIMENSIONS



We offer a complete line of accessories for the MGD Series of manufactured home furnaces. Some are necessary to meet certification requirements. Some are options that may be needed depending upon the application and the geographical location of the installation. These accessories are described in detail inside this brochure.



Solid state integrated control board—Monitors flame, plus start up and shut down of blower to improve efficiency

Combustion blower—Provides a consistent and stable flow of air to the burner and is unaffected by outside conditions

Hot surface ignition system—Safe method used with high efficiency 80% AFUE models—no standing pilot

Attractive appearance—Appliance white doors have rounded corners and plastic caps for a modern look

Fully insulated cabinet—Fiberglass insulation with reflective foil makes the units quiet and efficient while minimizing heat loss

Coil compartment—Handles coils for add-on A/C systems up to 5 tons

Monoport burner—Uses stainless steel and sintered metal for exceptional burner efficiency and long life

Warranty—5 years on mechanical parts, 10 years on heat exchanger (see printed warranty for limitations and details)