

OmegaPlate™

» Single Valve Outlet Plate



Savings

Fewer touches – Installs at rough, and incorporates valve, escutcheon, stub out, and bracket in one easy-to-install product.

No more managing/buying/storing/organizing/carrying/handling separate parts and pieces – Saves time with every installation.

Quality

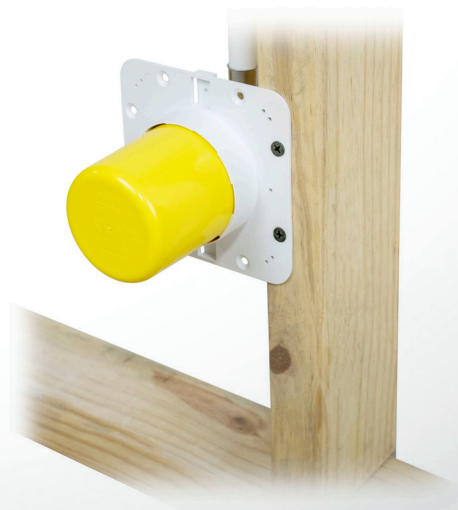
No wobbly stub outs, exposed tube/joints or inferior valves. Installations are consistent – solid, clean, and professional-looking.

Attractive, plated valves are certified and compliant.

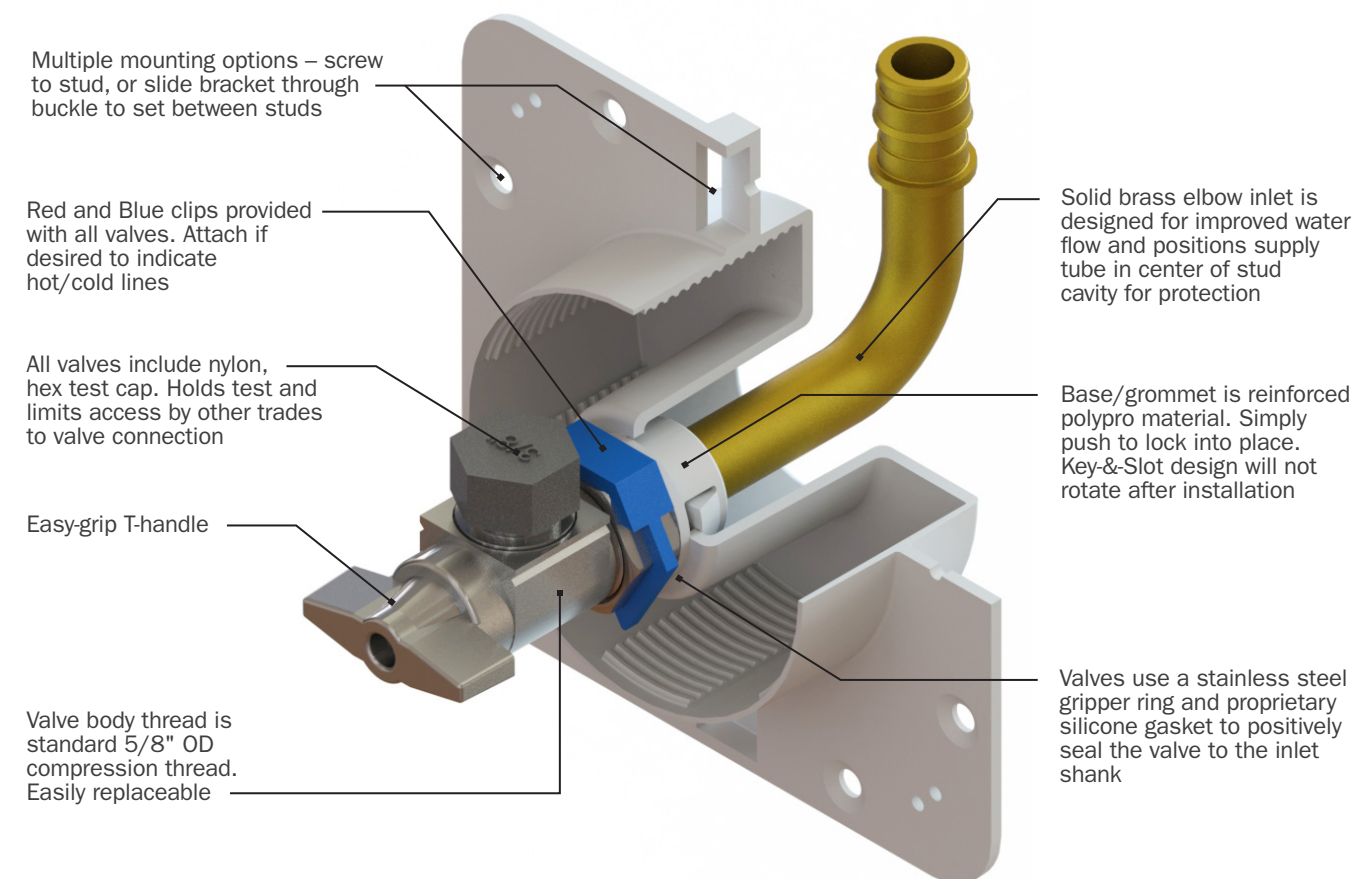
Convenient

Valves are replaceable with standard 5/8" OD compression stops.

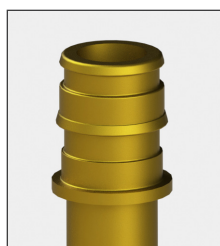
Debris cover (included) protects valve during rough-in.



Patented Valve Design Exclusive to Sioux Chief Access products.



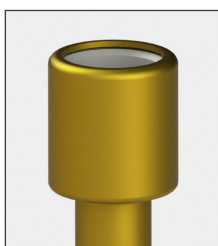
Connection Types:



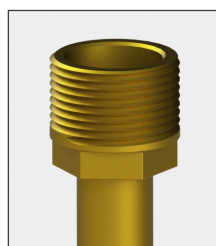
ASTM F1960 Grip™



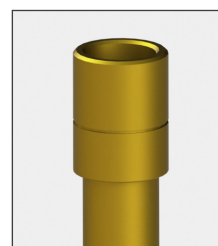
ASTM F1807 Crimp™



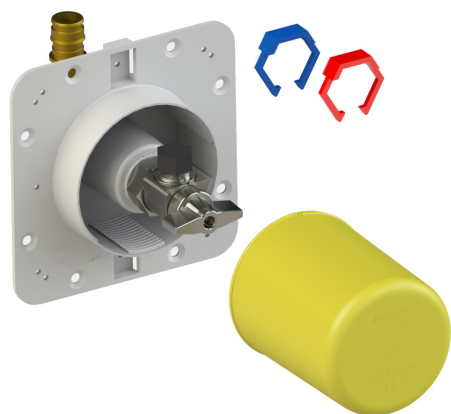
CPVC Socket



MIP/F.SWT



M.SWT/Push/Press
with push-fitting lock groove



Complete Rough-In Package

The OmegaPlate™ includes everything you need, when you need it: a versatile mounting/access plate, high-quality valve with brass elbow connection, protective debris cover, and color clips for hot/cold lines.

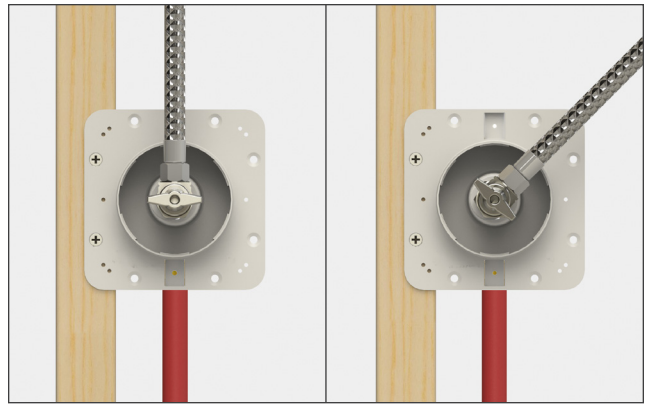
Finish escutcheons
are available
separately





Fast, Consistent Rough-ins

Quickly and easily rough in for lavatories, toilets, dishwashers, ice makers, or other appliances. Supply lines can be run from above or below.



Swivel Valve Outlet

Valve outlet can be oriented in any direction, independent of the inlet elbow and incoming supply tube.



Works Inside Cabinets

Escutcheons are designed to thread onto the plate and hold securely – Perfect for interior walls or inside of cabinet-style lavatory fixtures.



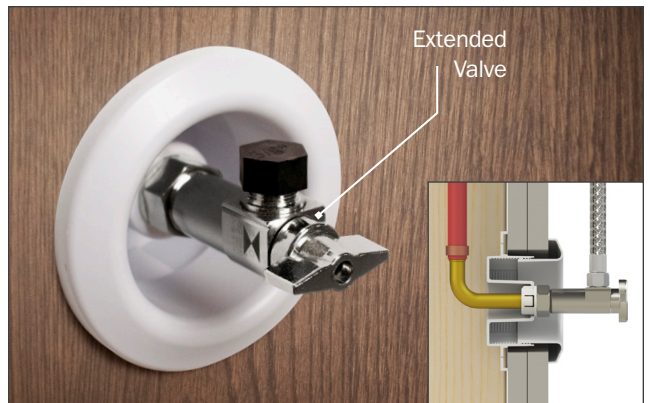
Professional-Looking Finish

Pre-colored, white ABS escutcheons can be painted to match any wall color. Install the TrimTite™ for a more flush appearance.



Mounts On or Between Studs

Fasten the OmegaPlate™ directly to studs, or use a bracket to mount between studs. Chrome-plated escutcheons compliment the look of the plated valve.



Optional Extended Valve

The extended 3/8" outlet valve option is great for applications where multiple layers of drywall are used, or when cabinets are furled out from the wall.



Replaceable Valve Design

All OmegaPlate™ valves can be replaced with any standard 5/8" OD compression-thread valve.

(see website for valve replacement instructions)

MiniRester™ Option

For applications that require a water hammer arrester, the compression thread MiniRester™ can be connected directly to the outlet of the OmegaPlate™ valve when installing supply tubes.

Item #
660-GTROB
or 660-GTR1B



699-A1-XR



699-DC



699-F



699-FC

» Buying Information

3/8" COMP. OUTLET ITEM NO.	1/4" COMP. OUTLET ITEM NO.	3/4" M.HOSE OUTLET ITEM NO.	INLET CONNECTION	MIN. QTY.	CASE QTY.
OMEGAPLATE™ with STANDARD VALVE					
699-A1-CR	699-A0-CR	699-A3-CR	1/2" CPVC socket connection	10	10
699-A1-MR	699-A0-MR	699-A3-MR	1/2" MIP/F.Swt connection	10	10
699-A1-PR	699-A0-PR	699-A3-PR	1/2" M.Swt/Press/Push connection	10	10
699-A1-WR	699-A0-WR	699-A3-WR	1/2" F1960 PEX connection	10	10
699-A1-XR	699-A0-XR	699-A3-XR	1/2" F1807 PEX connection	10	10
OMEGAPLATE™ with 3/8" EXTENDED VALVE					
699-A1ECR			1/2" CPVC socket connection	10	10
699-A1EMR			1/2" MIP/F.Swt connection	10	10
699-A1EPR			1/2" M.Swt/Press/Push connection	10	10
699-A1EWR			1/2" F1960 PEX connection	10	10
699-A1EXR			1/2" F1807 PEX connection	10	10
ACCESSORIES					
699-F	White escutcheon for OmegaPlate - paintable ABS			10	10
699-FC	Chrome-plated escutcheon for OmegaPlate			10	10
699-DC	Debris cover for OmegaPlate			10	10
698-VC	Color clips for valve - red/blue			50	50
688-G1CE	Extended replacement valve - 5/8" OD comp. thread x 3/8" OD comp. outlet			1	10
305-RT	Grommet removal tool - use to remove valve from base plate			1	10

