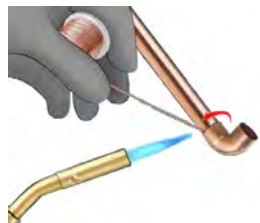


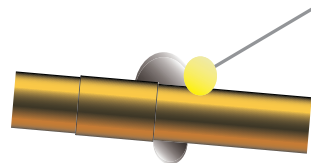
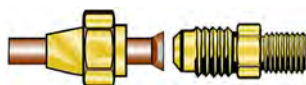
SIMPLE, QUICK, EASY

*The Solution for your flare leaks,
soldering, and brazing problems!*



**No Welding,
Soldering, Brazing**

No Flaring



No Leaking

PUSH, PEEL, LOCK, TIGHTEN, CHECK

***HVAC/R Fitting solution
to reduce your labor cost
and installation time!***

NO FIRE HAZARD

NO HOT WORK PERMIT

NO OXIDATION, NITROGEN PURGING

NO SPECIAL GAUGE

NO MARKER

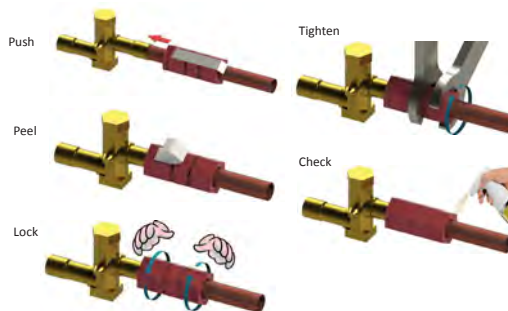
NO SPECIAL TOOL

SMARTLOCK®

Quality Standards



Easy Installation



Head Quarters:

2701 Old Denton Rd; Suite 260
Carrollton, TX 75007

Sales Office:

131 Daniel Webster Hwy; Suite 520
Nashua, NH 03060
Tel: 980-333-4530

Sales and Service Office:

Tel: 214-304-2083
(For South and South West Territories)

<http://www.smartlockfitting.com>

SMARTLOCK®

HIGH PRESSURE QUICK CONNECTION

**Innovative Fitting for
HVAC/R Line Connections**



**Connecting Solution for:
Mini Splits, Air Conditioner &
Heating AND Refrigeration
SYSTEMS**



NO WELDING

○ TECHNOLOGY

METAL TO METAL SEALING



APPLICATION SPECIFICATIONS

High Temperature

-40°C to 150°C (-40°F ~ 302°F)

Design Pressure Range

1/4" -1700 psig to 7/8" -960psig

Burst Pressure Range

1/4" -9700 psig to 7/8" -4800psig

Tube is limiting factor in system pressure

Refrigerant - for use in any including:

R-717 (Ammonia)

R-410A (R-32 50%, R-125 50%)

R-22 (Chlorodifluoromethane)

R-134a (1,1,1,2-Tetrafluoroethane)

R-744 (Carbon dioxide)

TUBE MATERIAL COMPATIBILITY

Applicable for Copper & Aluminum tubing.

Other materials available (contact us).



AL + CU



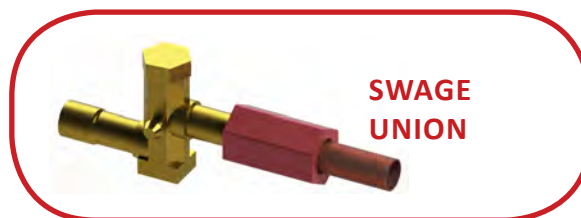
AL + AL



CU + CU

NO FLARING

○ PRODUCT LINE UP



NO LEAKING

○ DETAILS/NEW PRODUCTS

- Product size range 1/4" to 7/8"
- Available for Straight, Swaged & Flared connections
- Designed for use with Copper and Aluminum tubes
- Metal to Metal refrigerant seal
- No elastomers seal the refrigerant
- For dual type A/C systems - Heating & Cooling and Refrigeration
- Eco Friendly Material
- Other sizes being developed

SPECIAL FITTING



Flare Reducing Connector - simple



complicated